

# The Dalles Dam Fishway Status Report

9/8/24

Inspection Period 9/1 - 9/7, 2024

## THE DALLES DAM



US Army Corps  
of Engineers  
Portland District

The Dalles Project-Fisheries  
P.O. Box 564  
The Dalles, OR 97058-9998  
Phone: 541-506-3800

<b>The Dalles Dam</b>	Inspections OOC	Criteria Limit	Total Number of Inspections: 14		Temperature: 70.0
			Comments:		Weekly Ave. Secchi: 5+

### NORTH FISHWAY

Exit differential	0	≤ 0.5'			
Count station differential	0	≤ 0.3'			
Weir crest depth	0	1.0' ± 0.1'			
Entrance weir N1	0	depth (≥ 8')	Average for the week	12.2	
Entrance Differential	0	1.0' - 2.0'	Average for the week	1.2	
N2		Closed			
PUD Intake differential	0	≤ 0.5'			

### EAST FISHWAY

Exit differential	0	≤ 0.5'			
Removable weirs 154-157	0	Per forebay			
Weir 158-159 differential	0	1.1' ± 0.1'			
Count station differential	0	≤ 0.3'			
153 Weir crest depth	0	1' ± 0.1'	1.2' per FPP.		
Junction pool weir JP6	0	> 7.0'	Weekly average	10.3	
East entrance differential	0	1.0' - 2.0'	Weekly average	1.5	
Entrance weir E1	0	No criteria	Weekly average	4.3	
Entrance weir E2	0	depth (≥ 8')	Weekly average	10.4	
Entrance weir E3	0	depth (≥ 8')	Weekly average	10.4	
Collection channel velocity	0	1.5 - 4 fps	2.69 fps 8/23		
Transportation channel velocity	0	1.5 - 4 fps	3.75 fps 8/23		
North channel velocity	0	1.5 - 4 fps	3.23 fps 8/18		
South entrance velocity	0	1.5 - 4 fps	4.18 fps 8/24		
West entrance differential	0	1.0' - 2.0'	Weekly average	1.4	
Entrance weir W1	0	depth (≥ 8')	Weekly average	10.3	
Entrance weir W2	0	depth (≥ 8')	Weekly average	10.4	
Entrance weir W3	0	No criteria	Weekly average	-3.1	
South entrance differential	0	1.0' - 2.0'	Weekly average	1.4	
Entrance weir S1	0	depth (≥ 8')	Weekly average	10.1	
Entrance weir S2	0	depth (≥ 8')	Weekly average	10.0	

### JUVENILE BYPASS

Sluicgate operation	0	Units 1,8,22			
Turbine trashrack drawdown	0	<1.5', biwkly			
Spill volume/pattern	0	1 to 22	Spill off 9/1		
Turbine Unit Priority	0	per FPP			
Gatewells	0	Weekly			

## Maintenance

-MU19 & MU20 FOOS 10/07/2018 1205 – 10/31/2025 1700 T10 ACETYLENE  
-MU11 OOS 3/25/24 0630 – 12/12/24 1700 – Annual and Thrust Bearing Oil Cooler  
-MU12 OOS 6/24/24 0630 – 3/15/25 1700 6 YR O/H and fin repair  
-MU2 OOS 7/15/24 0630 – 10/10/24 1700 Annual/Blade seal replacement  
-SS02 OOS 9/9/24 0630 – 9/26/24 1700 Annual  
-T5 OOS 9/3/24 0630 – 9/12/24 1200 Transformer 2 yr maintenance  
-MU9 OOS 9/3/24 0630 - 9/12/24 1700 Annual  
-MU10 OOS 9/3/24 0630 – 9/12/24 Annual

## Maintenance

Calibrations found to be in criteria  
Spillway assessment; Spillgates 1- 9 rehab 2034. Spillway crane replace first priority. Investigating gate operation frequency reduction.  
Lamprey LPS contractor installed flumes and holding tank complete and tested.  
DC lower guide bearing pump replaced on FU1

## Predators

No recent sea lion sightings. Avian numbers decreased as spill was shut off, gulls foraging in SW4.  
Roughly 50 gulls resting in daytime. Nocturnal avian feeding not being monitored.  
Tori lines installed at east, west and south  
Approx. 60-90 DCCO feeding and on BPA towers. Some with juvenile plumage.  
Some glaucus wing gulls foraging in SW4 as USDA deterrents and lethal take stopped 7/30

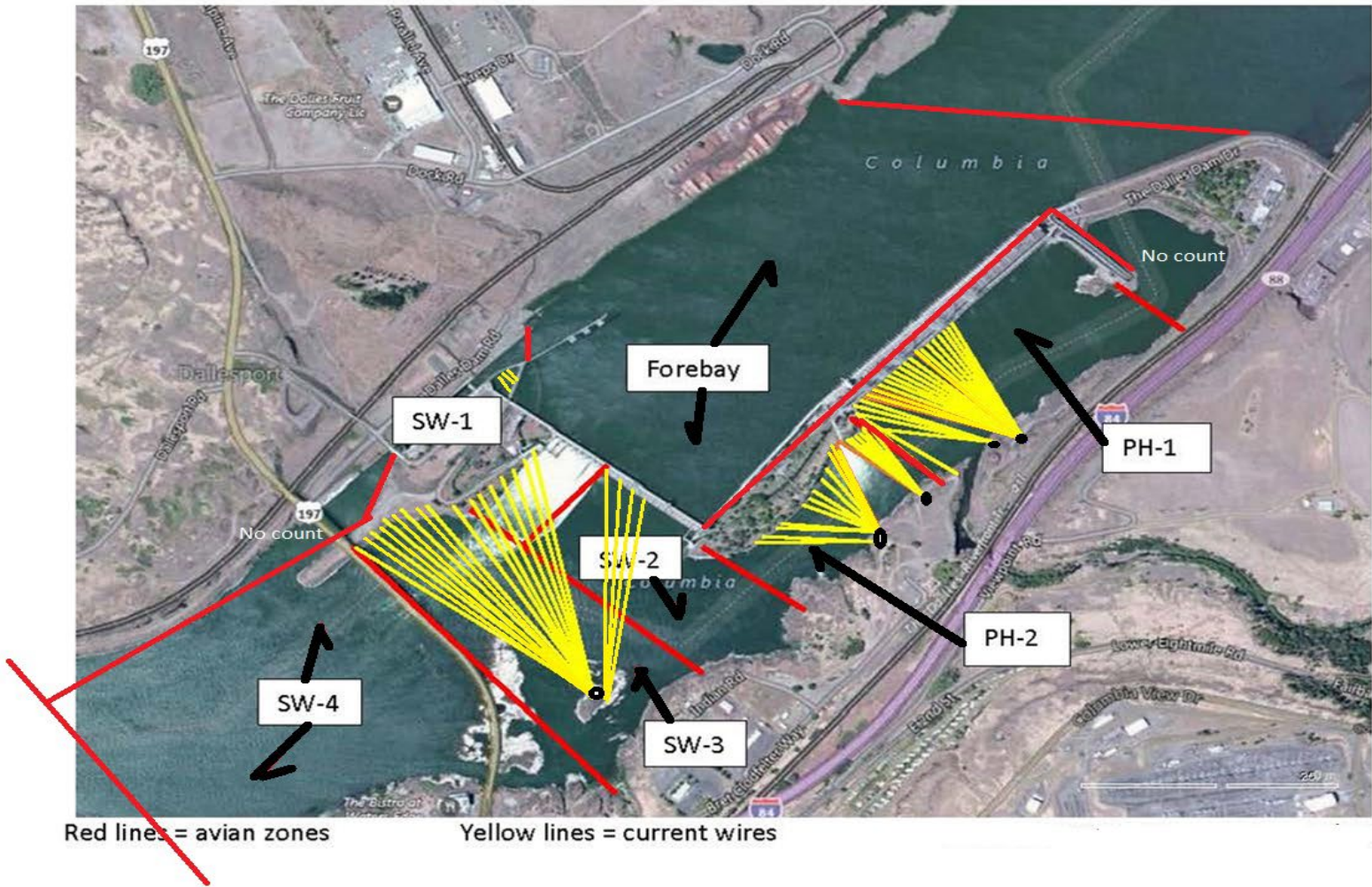
## Researchers

USGS temperature link- [September](#)  
4 Peaks fish count Resumed 4/1  
Fecal samples taken from pelicans and gulls in July/August to sample eDNA sent to Cramer Fish sciences for predation study.  
TD fisheries released 29 lamprey via LPS to forebay over the weekend

## Operations

Both fishladders in full operation.

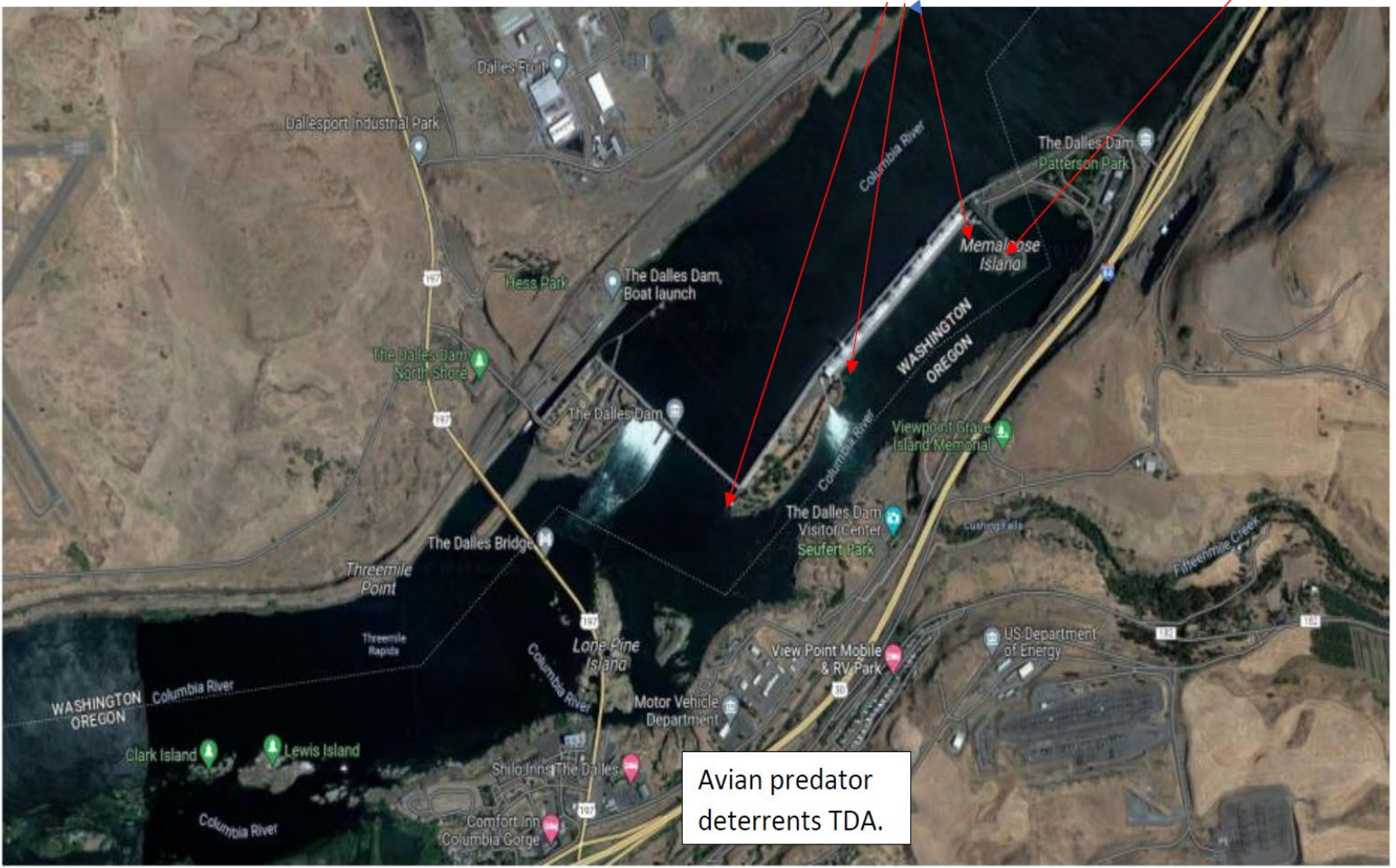
# Bird Count Zones, Avian Lines and Deterrent Sites



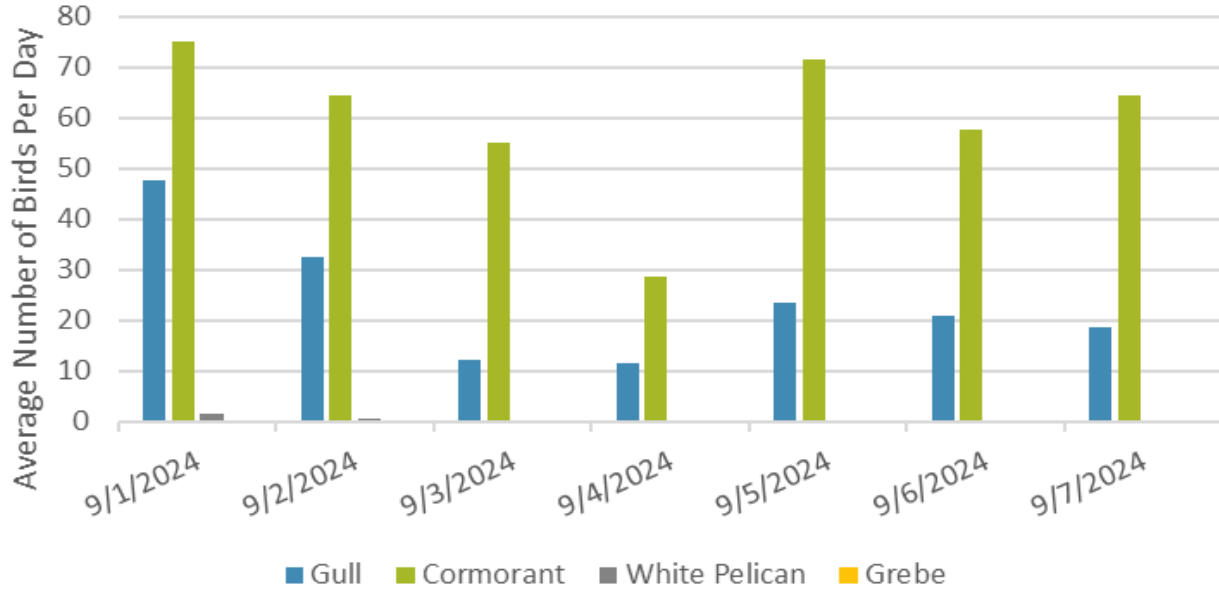
Avian predator tori lines and audio distress Bird Gard. 10/2023

Tori lines at East Ladder entrances.

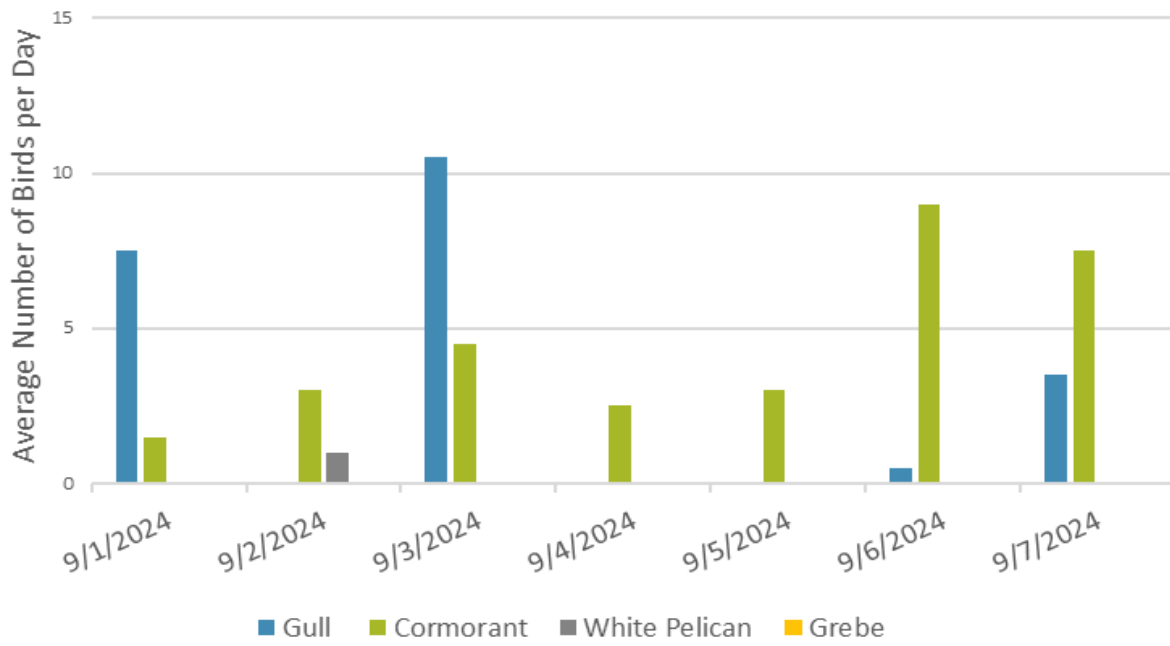
Bird Gard audio deterrent.



### Non-Foraging Piscivorous Birds

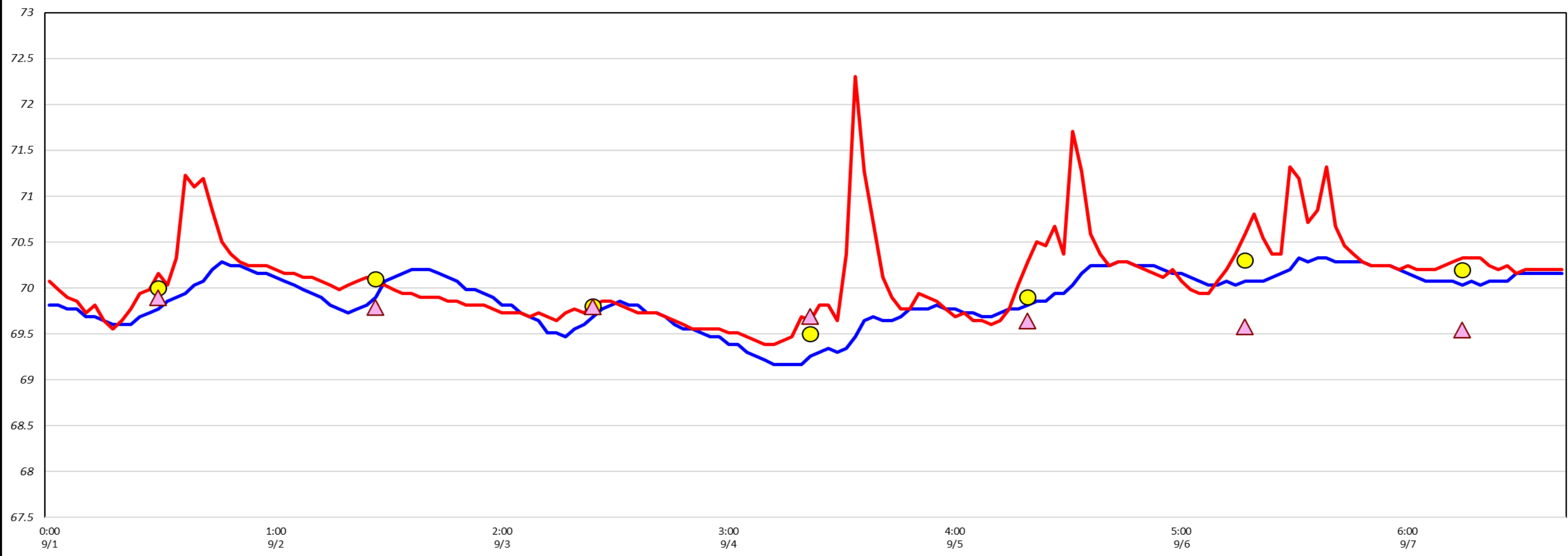


### Foraging Piscivorous Birds



### Adult Fish Ladders-River Temperatures

— East Count Station    — North Count Station    ● Current USGS Daily Average    ▲ USGS Daily Average (2007-2023)



Secchi:		USGS
5+	Sun	70.0
5+	Mon	69.8
5+	Tue	69.5
5+	Wed	69.9
5+	Thurs	70.3
5+	Fri	70.2
5+	Sat	70.1
5+	AVG	70.0

## Reporting week data

Date:	North Ladder		East Ladder											
	Differential	N1 Depth	East Entrance					West Entrance				South Entrance		
			Differential	E1 Depth	E2 Depth	E3 Depth	JP 6	Differential	W1	W2	W3	Differential	S1	S2
9/1	1.1	12.6	1.6	4.2	10.1	12.4	10.2	1.4	10.2	10.3	-3.2	1.4	9.8	9.8
	1.1	12.4	1.4	4.1	10.2	12.6	10.1	1.5	10.1	10.0	-3.3	1.3	10.0	9.9
9/2	1.1	12.6	1.6	4.3	10.2	12.5	10.3	1.5	10.2	10.3	-3.0	1.3	10.0	10.0
	1.1	12.4	1.5	4.8	10.4	12.7	10.8	1.3	10.6	10.6	-2.6	1.3	10.4	10.3
9/3	1.1	12.4	1.6	4.5	10.2	12.6	10.5	1.4	10.4	10.5	-2.8	1.4	10.2	10.3
	0.9	11.8	1.3	5.7	10.6	12.9	11.7	1.4	10.6	10.7	-2.4	1.3	10.7	10.6
9/4	1.2	12.3	1.6	4.0	10.3	12.7	10.0	1.5	10.1	10.2	-3.3	1.4	9.7	9.7
	1.2	12.2	1.4	4.3	10.4	12.9	10.3	1.4	10.6	10.6	-3.1	1.4	10.0	9.9
9/5	1.2	12.2	1.5	4.2	10.2	12.7	10.2	1.4	10.4	10.5	-3.3	1.4	9.8	9.8
	1.3	12.2	1.4	4.4	10.2	9.7	10.4	1.3	10.4	10.4	-3.1	1.3	10.2	10.1
9/6	1.3	12.0	1.6	3.5	10.1	12.6	9.5	1.5	10.1	10.1	-3.8	1.4	9.7	9.7
	1.3	11.9	1.4	4.3	10.3	12.7	10.3	1.4	10.3	10.3	-3.2	1.3	10.3	10.2
9/7	1.3	11.8	1.4	4.0	10.6	12.8	10.0	1.4	10.3	10.4	-3.2	1.4	10.1	10.0
	1.2	12.0	1.5	4.2	12.7	13.0	10.2	1.4	10.3	10.4	-3.4	1.4	9.9	9.9
<b>AVG:</b>	<b>1.2</b>	<b>12.2</b>	<b>1.5</b>	<b>4.3</b>	<b>10.4</b>	<b>12.5</b>	<b>10.3</b>	<b>1.4</b>	<b>10.3</b>	<b>10.4</b>	<b>-3.1</b>	<b>1.4</b>	<b>10.1</b>	<b>10.0</b>



So long to the pelicans but eDNA from scat may show what they ate in July/Aug./2024.

