

The Dalles Dam Fishway Status Report

6/23/24

Inspection Period 6/16 - 6/22, 2024

THE DALLES DAM



US Army Corps
of Engineers
Portland District

The Dalles Project-Fisheries
P.O. Box 564
The Dalles, OR 97058-9998
Phone: 541-506-3800

The Dalles Dam	Inspections OOB	Criteria Limit	Total Number of Inspections: 14		Temperature: 62.1
			Comments: Fishways in full operation		Weekly Ave. Secchi: 5.0

NORTH FISHWAY

Exit differential	0	≤ 0.5'			
Count station differential	0	≤ 0.3'			
Weir crest depth	0	1.0' ± 0.1'			
Entrance weir N1	0	depth (≥ 8')	Average for the week	10.8	
Entrance Differential	0	1.0' - 2.0'	Average for the week	1.2	
N2		Closed			
PUD Intake differential	2	≤ 0.5'			

EAST FISHWAY

Exit differential	0	≤ 0.5'			
Removable weirs 154-157	0	Per forebay			
Weir 158-159 differential	0	1.1' ± 0.1'			
Count station differential	0	≤ 0.3'			
153 Weir crest depth	0	1' ± 0.1'	1.2' per FPP.		
Junction pool weir JP6	0	> 7.0'	Weekly average	11.1	
East entrance differential	0	1.0' - 2.0'	Weekly average	1.5	
Entrance weir E1	0	No criteria	Weekly average	5.1	
Entrance weir E2	0	depth (≥ 8')	Weekly average	11.5	
Entrance weir E3	0	depth (≥ 8')	Weekly average	11.5	
Collection channel velocity	0	1.5 - 4 fps	2.60 fps 6/21		
Transportation channel velocity	0	1.5 - 4 fps	3.70 fps 6/22		
North channel velocity	0	1.5 - 4 fps	2.95 fps 6/22		
South entrance velocity	0	1.5 - 4 fps	3.94 fps 6/21		
West entrance differential	0	1.0' - 2.0'	Weekly average	1.4	
Entrance weir W1	0	depth (≥ 8')	Weekly average	10.6	
Entrance weir W2	0	depth (≥ 8')	Weekly average	10.5	
Entrance weir W3	0	No criteria	Weekly average	-2.3	
South entrance differential	0	1.0' - 2.0'	Weekly average	1.3	
Entrance weir S1	0	depth (≥ 8')	Weekly average	10.7	
Entrance weir S2	0	depth (≥ 8')	Weekly average	10.5	

JUVENILE BYPASS

Sluiceway operation	0	Units 1,8,22	22 sluiceway to remain open through the 2024 fish passage season		
Turbine trashrack drawdown	0	<1.5', biwkly	6/12/24 all in criteria		
Spill volume/pattern	0	1 to 22	ITS open, spilling gates 1-8		
Turbine Unit Priority	0	per FPP	MU1 and MU22 in criteria		
Gatewells	0	Weekly	Out-migrating juvenile salmonids in gatewells as of 6/22/2024		

Current Outages

-MU19 & MU20 FOOS 10/07/2018 1205 – 10/31/2025 1700 T10 ACETYLENE
-MU11 OOS 3/25/24 0630 – 6/27/24 1700 – Annual and Thrust Bearing Oil Cooler

Maintenance

Calibrations performed on 6/21, all within limits
Spillway assessment; Spillgates 1- 9 rehab 2034. Spillway crane replace first priority. Investigating gate operation frequency reduction.
Lamprey LPS contractor installed flumes and holding tank complete and tested. Operation began 5/16.
DC lower guide bearing pump replaced on FU1

Predators

No recent sea lion sightings. Pelicans increasing in numbers along with increasing shad numbers, foraging in SW4, SW3 and PH1.
Large sturgeon busy in east channel feeding. Many sturgeon breaching in tailwaters.
Tori lines installed at east, west and south. Mobile Bird Gard operating in PH1.
DCCO on BPA towers reduced and easily flushed from towers. Roughly 40 DCCO now on Murdock island tower.
Falconry focused on BPA towers and completed contract. 5/28/2024 5 DCCO effigies under BPA towers 6/16/24
Gull take (CAGU) occurring in SW4, increasing gull counts after 1400 hr. 193 CAGU taken of 400 permitted. 2 DCCO taken this previous week.

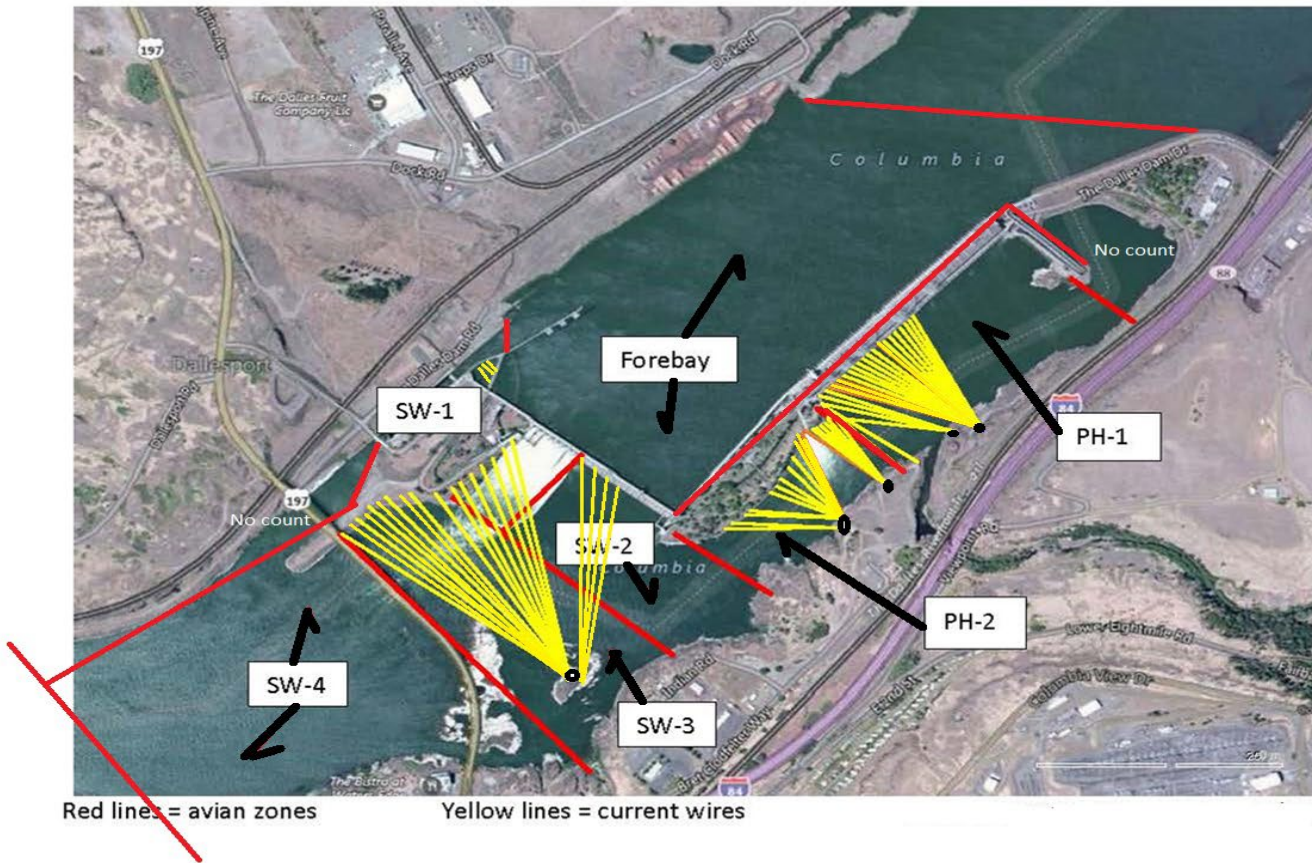
Researchers

USGS temperature link- [June](#)
4 Peaks fish count Resumed 4/1
7 new stomachs from gulls taken. Most were adult plumage CAGU and males. 5 DCCO stomachs taken. 10 take of fish GI/Stomachs.
USDA continue lethal gull take in SW4, mostly morning and mid day up to 15 samples per week. 3 DCCO taken this past week.
WDFW Dam Angling begin 30 April 2024 8 samples per week taken for predator study.

Operations

Both fishladders in full operation.
Spillway opened 4/10 40%
LPS in service. Daily catch 128, 180, 265 6/21-6/23.

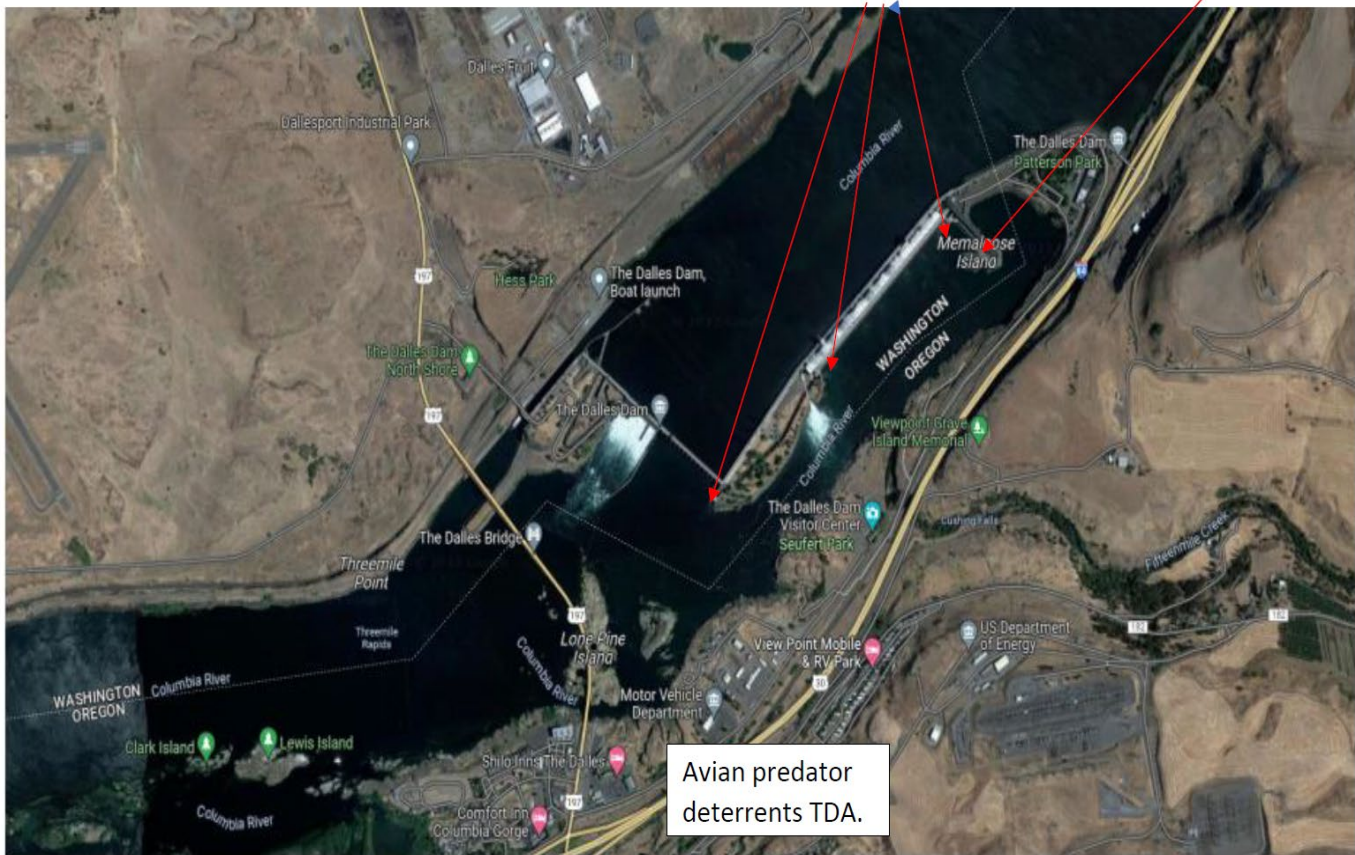
Bird Count Zones, Avian Lines and Deterrent Sites

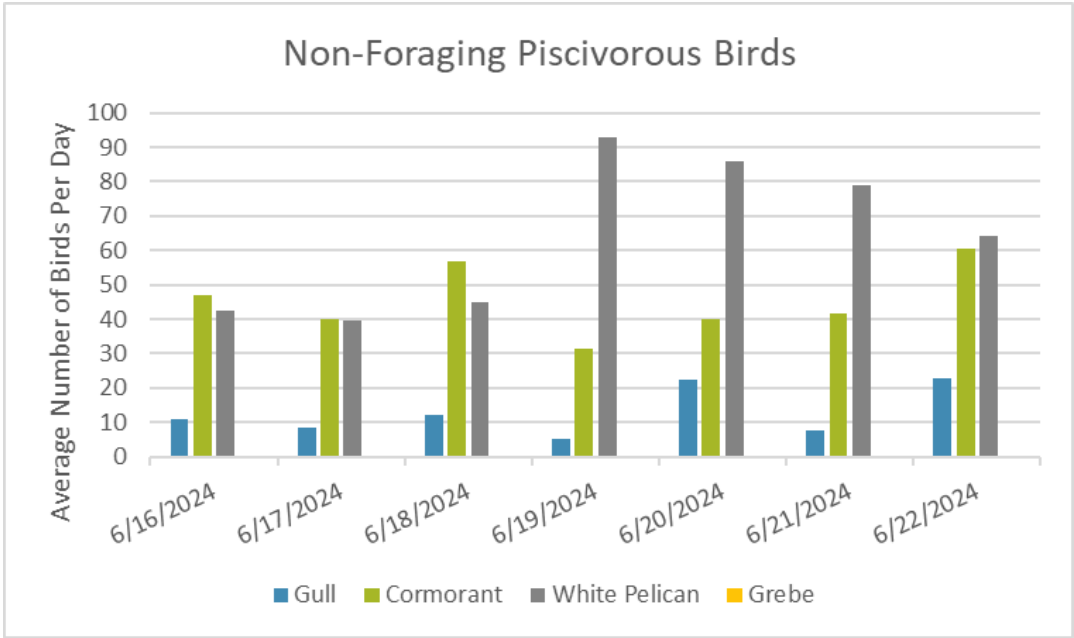


Avian predator tori lines and audio distress Bird Gard. 10/2023

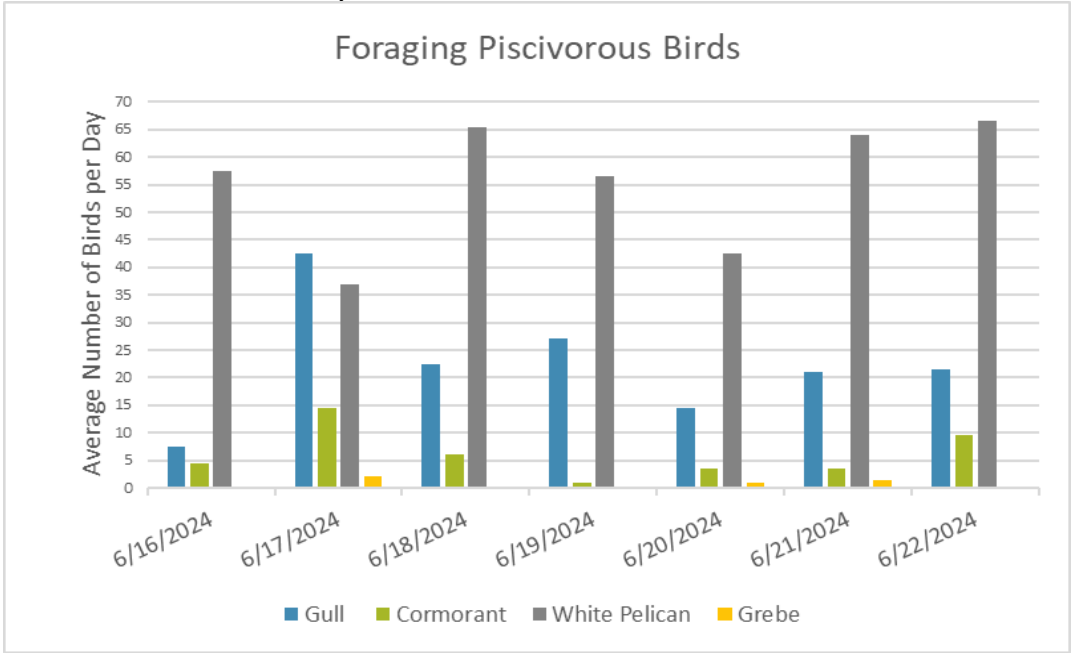
Tori lines at East Ladder entrances.

Bird Gard audio deterrent.

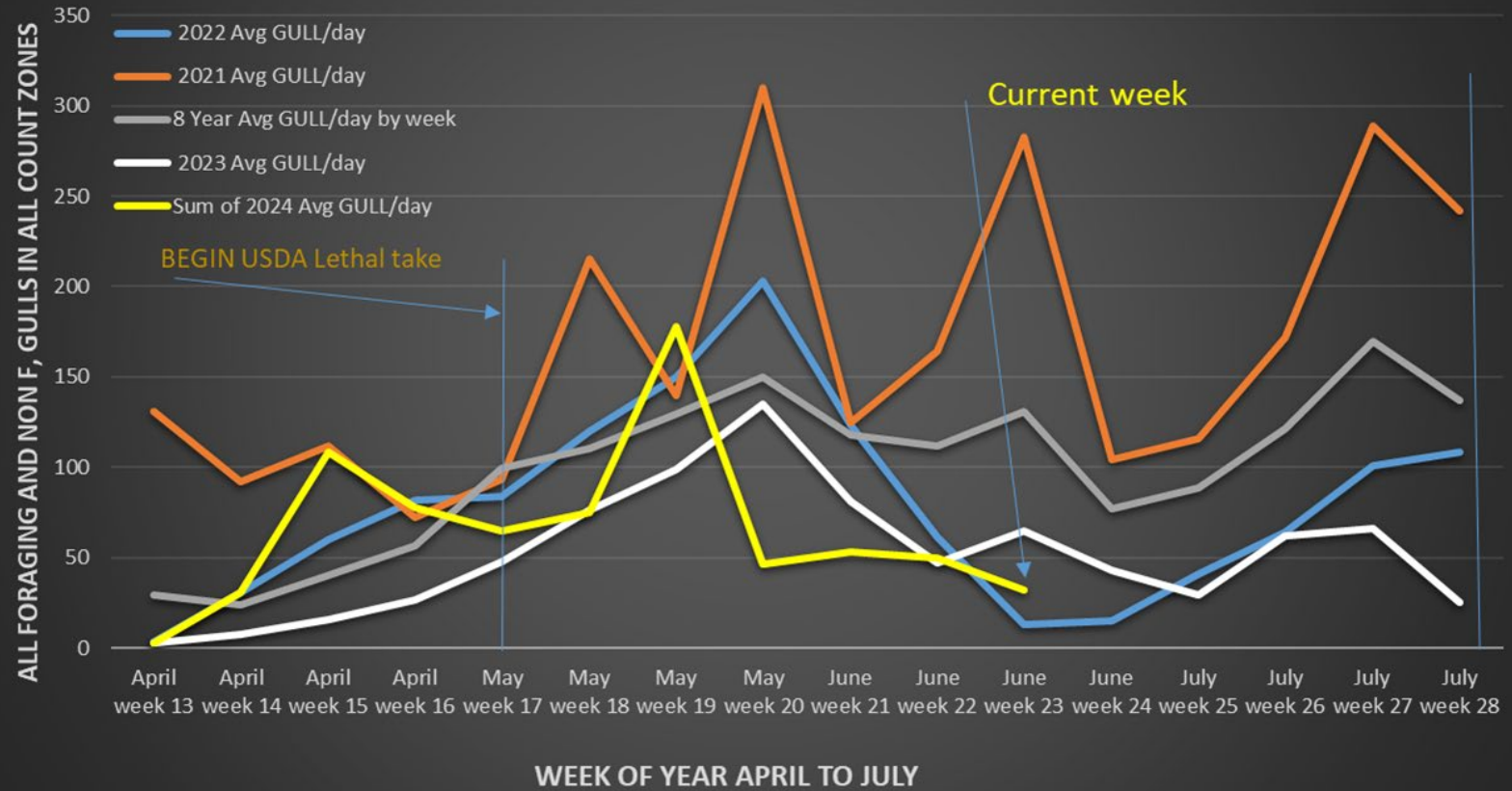




Counts are usually taken before the beginning of active hazing and typically after the end of daily hazing around 1400 hrs. USDA does one daily count in all zones and USACE does additional count in all zones.



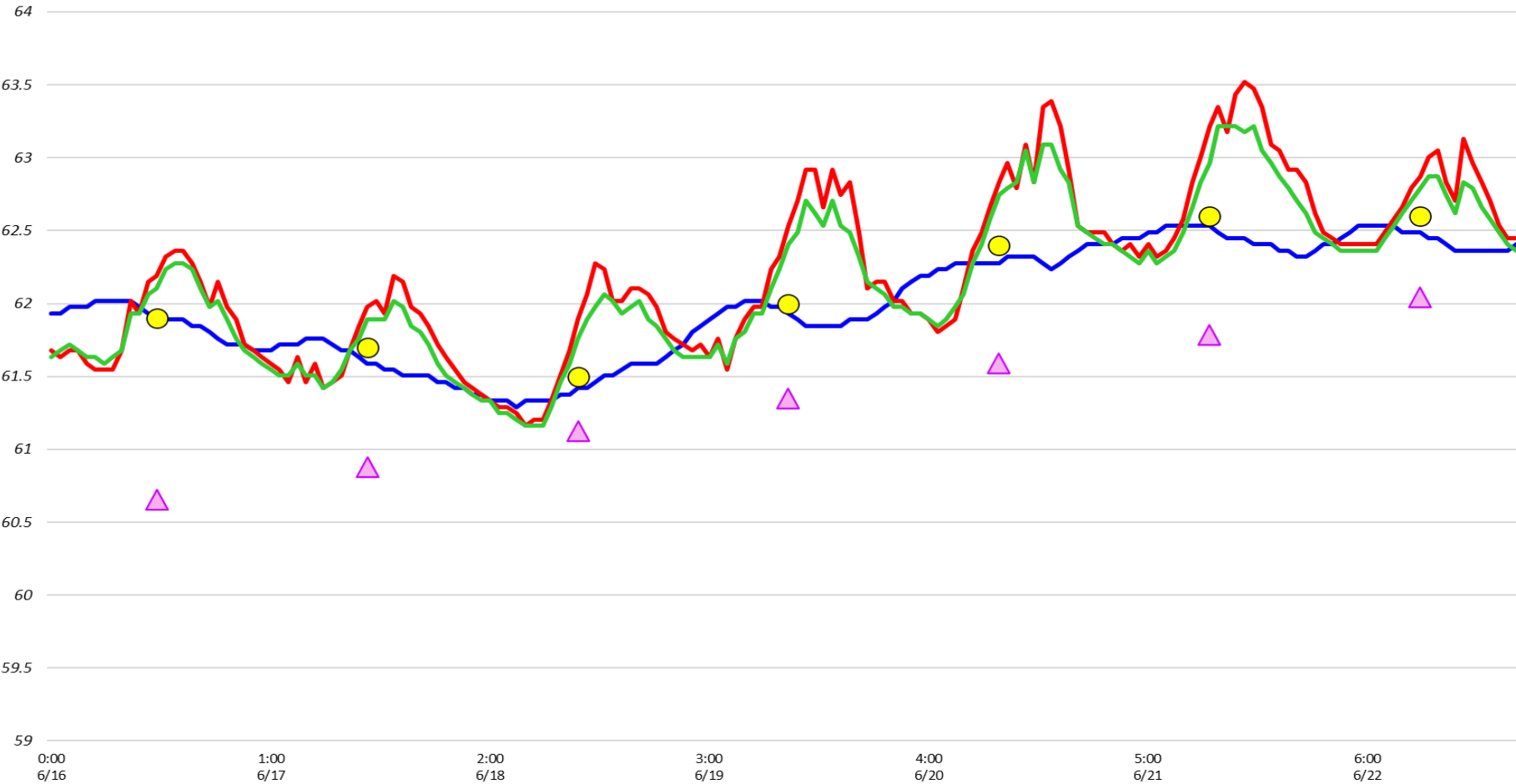
TDA Daily Avg # of GULLS by Week, April to July 2021, 2022, 2023 and 2024 Compared to Previous 8 years Daily Mean.



These daily counts do not include any nocturnal monitoring values or predation impacts.

Adult Fish Ladders-River Temperatures

South Entrance North Count Station North Entrance Current USGS Daily Average USGS Daily Average (2007-2023)



Secchi:		USGS
5.0	Sun	61.9
5.0	Mon	61.7
5.0	Tue	61.5
5.0	Wed	62.0
5.0	Thurs	62.4
5.0	Fri	62.6
5.0	Sat	62.6
5.0	AVG	62.1

Reporting week data

Date:	North Ladder		East Ladder											
			East Entrance					West Entrance			South Entrance			
	Differential	N1 Depth	Differential	E1 Depth	E2 Depth	E3 Depth	JP 6	Differential	W1	W2	W3	Differential	S1	S2
6/16	1.0	11.0	1.5	4.5	11.5	11.7	10.5	1.3	10.6	10.6	-2.9	1.3	10.6	10.5
	1.3	10.8	1.5	4.3	11.5	11.5	10.3	1.3	10.4	10.4	-3.0	1.4	10.4	10.2
6/17	1.2	10.9	1.5	5.0	11.6	11.6	11.0	1.4	10.4	10.4	-2.4	1.3	10.5	10.5
	1.3	10.8	1.5	5.6	11.6	11.5	11.6	1.3	10.9	10.9	-1.7	1.3	10.8	10.5
6/18	1.3	10.8	1.4	5.4	11.6	11.6	11.4	1.3	10.7	10.7	-2.1	1.5	10.5	10.5
	1.3	10.8	1.4	5.9	11.7	11.6	12.0	1.3	10.8	10.8	-1.6	1.3	10.6	10.3
6/19	1.1	10.9	1.4	5.4	11.7	11.7	11.4	1.3	10.8	10.8	-2.0	1.4	10.6	10.6
	1.3	10.7	1.4	5.9	11.6	11.5	12.0	1.3	10.9	10.9	-1.5	1.4	10.8	10.4
6/20	1.2	10.8	1.6	4.9	11.3	11.4	10.9	1.4	10.4	10.4	-2.4	1.4	10.6	10.5
	1.2	10.6	1.5	4.4	11.2	11.4	10.4	1.5	10.0	9.9	-3.1	1.3	10.7	10.4
6/21	1.3	10.9	1.4	5.1	11.6	11.8	11.1	1.3	10.7	10.7	-2.4	1.3	10.7	10.4
	1.3	10.9	1.5	5.1	11.6	11.8	11.1	1.4	10.5	10.4	-2.3	1.3	10.7	10.3
6/22	1.2	10.8	1.6	5.0	11.2	11.4	11.0	1.5	10.3	10.3	-2.3	1.3	11.0	10.7
	1.2	10.8	1.6	5.0	11.0	11.2	11.0	1.5	10.3	10.2	-2.4	1.3	10.9	10.7
AVG:	1.2	10.8	1.5	5.1	11.5	11.6	11.1	1.4	10.6	10.5	-2.3	1.3	10.7	10.5

Fishways inspected twice daily



Adult lamprey using the new LPS 6/22