

# The Dalles Dam Fishway Status Report

6/16/24

Inspection Period 6/9 - 6/15, 2024

## THE DALLES DAM



US Army Corps  
of Engineers  
Portland District

The Dalles Project-Fisheries  
P.O. Box 564  
The Dalles, OR 97058-9998  
Phone: 541-506-3800

<b>The Dalles Dam</b>	<b>Inspections OOC</b>	<b>Criteria Limit</b>	<b>Total Number of Inspections:</b> 14		<b>Temperature:</b> 61.1
			<b>Comments:</b> Fishways in full operation		<b>Weekly Ave. Secchi:</b> 4.9

### NORTH FISHWAY

Exit differential	0	≤ 0.5'			
Count station differential	0	≤ 0.3'			
Weir crest depth	0	1.0' ± 0.1'			
Entrance weir N1	0	depth (≥ 8')	Average for the week	11.0	
Entrance Differential	0	1.0' - 2.0'	Average for the week	1.3	
N2		Closed			
PUD Intake differential	2	≤ 0.5'			

### EAST FISHWAY

Exit differential	0	≤ 0.5'			
Removable weirs 154-157	0	Per forebay			
Weir 158-159 differential	0	1.1' ± 0.1'			
Count station differential	0	≤ 0.3'			
153 Weir crest depth	0	1' ± 0.1'	1.2' per FPP.		
Junction pool weir JP6	0	> 7.0'	Weekly average	11.9	
East entrance differential	0	1.0' - 2.0'	Weekly average	1.5	
Entrance weir E1	0	No criteria	Weekly average	6.1	
Entrance weir E2	0	depth (≥ 8')	Weekly average	11.1	
Entrance weir E3	0	depth (≥ 8')	Weekly average	11.1	
Collection channel velocity	0	1.5 - 4 fps	2.66 fps 6/12		
Transportation channel velocity	0	1.5 - 4 fps	3.31 fps 6/11		
North channel velocity	0	1.5 - 4 fps	2.56 fps 6/10		
South entrance velocity	0	1.5 - 4 fps	4.28 fps 6/11		
West entrance differential	0	1.0' - 2.0'	Weekly average	1.4	
Entrance weir W1	0	depth (≥ 8')	Weekly average	10.7	
Entrance weir W2	0	depth (≥ 8')	Weekly average	15.0	
Entrance weir W3	0	No criteria	Weekly average	-1.6	
South entrance differential	0	1.0' - 2.0'	Weekly average	1.3	
Entrance weir S1	0	depth (≥ 8')	Weekly average	10.9	
Entrance weir S2	0	depth (≥ 8')	Weekly average	10.6	

### JUVENILE BYPASS

Sluiceway operation	0	Units 1,8,22	22 sluiceway to remain open through the 2024 fish passage season		
Turbine trashrack drawdown	0	<1.5', biweekly	6/12/24 all in criteria		
Spill volume/pattern	0	1 to 22	ITS open, spilling gates 1-8		
Turbine Unit Priority	0	per FPP	MU1 and MU22 in criteria		
Gatewells	0	Weekly	Out-migrating juvenile salmonids in gatewells as of 6/12/2024		

## Current Outages

MU11 OOS 3/25/24 0630 – 6/27/24 1700 – Annual and Thrust Bearing Oil Cooler  
MU19 & MU20 Forced-OOS 10/07/2018 1205 – 10/31/2025 1700 T10 ACETYLENE  
-T4 OOS 5/20/24 0630 – 6/6/24 1230 Transformer Maintenance  
-MU7 OOS 5/20/24 0630 – 6/6/24 1700 Annual and NPDES  
-MU8 OOS 5/20/24 0630 – 6/6/24 1700 Annual and NPDES

## Maintenance

Calibrations performed on 6/3, all within limits  
Spillway assessment; Spillgates 1- 9 rehab 2034. Spillway crane replace first priority. Investigating gate operation frequency reduction.  
Lamprey LPS contractor installed flumes and holding tank complete and tested. Operation began 5/16. Lamprey are utilizing the passage structure.  
DC lower guide bearing pump replaced on FU1

## Predators

No recent sea lion sightings. Pelicans increasing in numbers along with increasing shad numbers, foraging in SW4, SW3 and PH1.  
Large sturgeon busy in east channel feeding. Many sturgeon breaching in tailwaters.  
Tori lines installed at east, west and south. Mobile Bird Gard operating in PH1. 10 Gull effigies in place on peninsula.  
DCCO on BPA towers reduced and easily flushed from towers. Roughly 40 DCCO now on Murdock island tower. USDA Pyro and audio deterrents daily.  
Falconry focused on BPA towers and completed contract. 5/28/2024 5 DCCO effigies under BPA towers 6/16/24  
Gull take (CAGU) occurring in SW4, increasing gull counts after 1400 hr. 6 DCCO taken in two previous weeks.

## Researchers

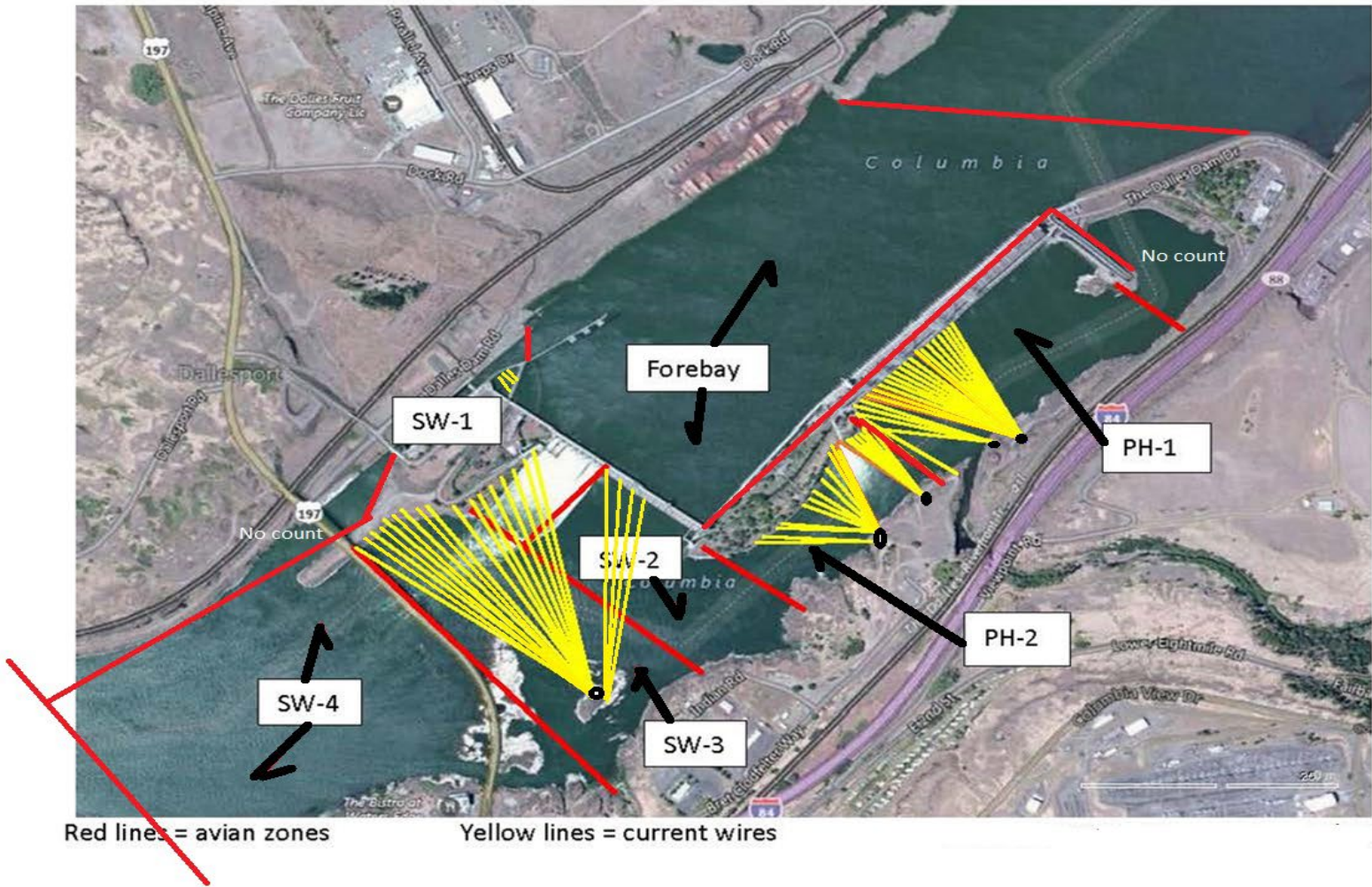
USGS temperature link-  
4 Peaks fish count Resumed 4/1  
7 new stomachs from gulls taken. Most were adult plumage CAGU and males. 5 DCCO stomachs taken. 10 take of fish GI/Stomachs.  
USDA continue lethal gull take in SW4, mostly morning and mid day up to 15 samples per week. 3 DCCO taken this past week.  
WDFW Dam Angling begin 30 April 2024 8 samples per week taken for predator study.

## Operations

Both fishladders in full operation.  
Spillway opened 4/10 40%  
LPS in service. Daily catch 147 and 154 6/13-14.

Approved by: Ron Twiner, Operation Project Manager, The Dalles Dam

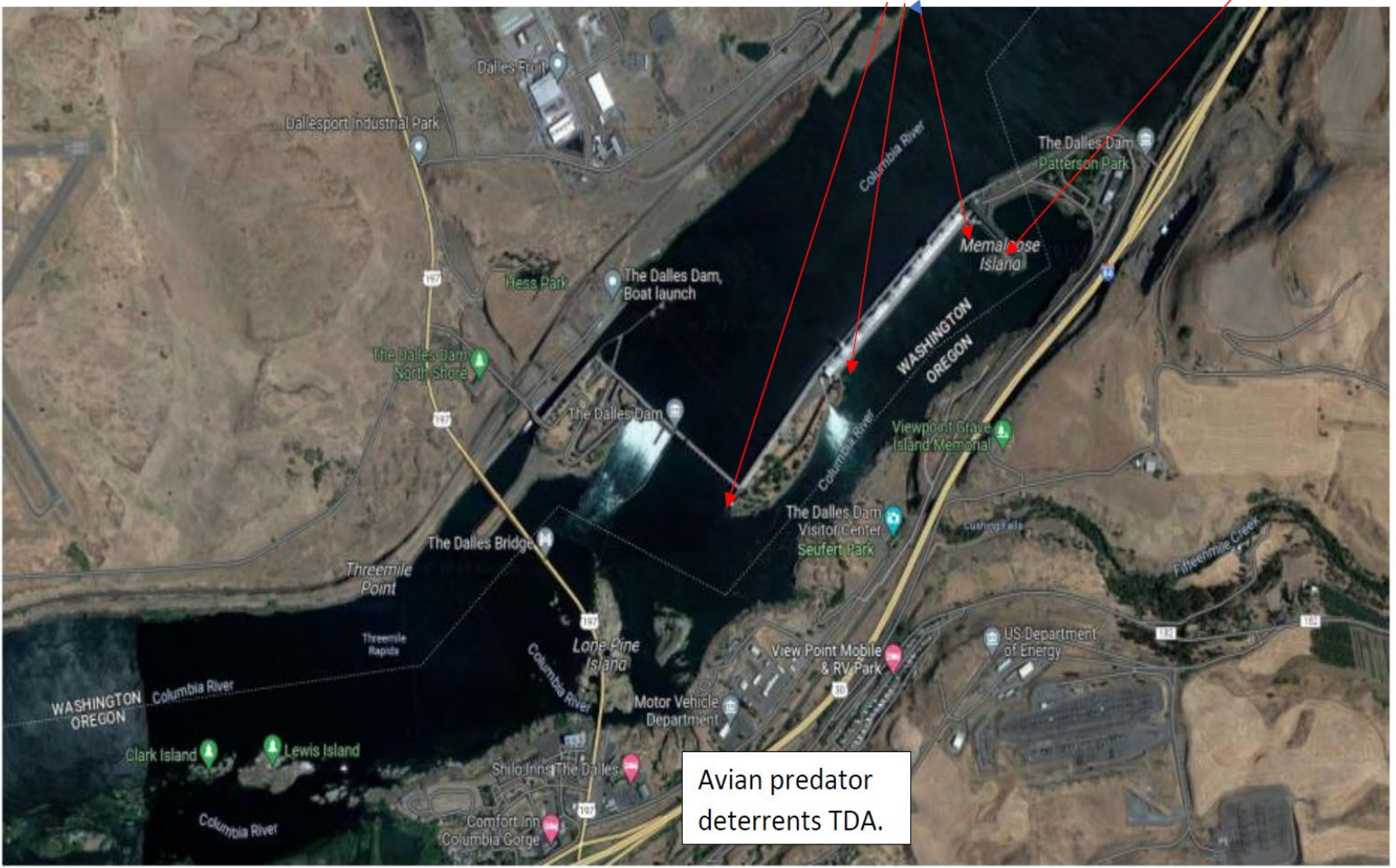
# Bird Count Zones, Avian Lines and Deterrent Sites

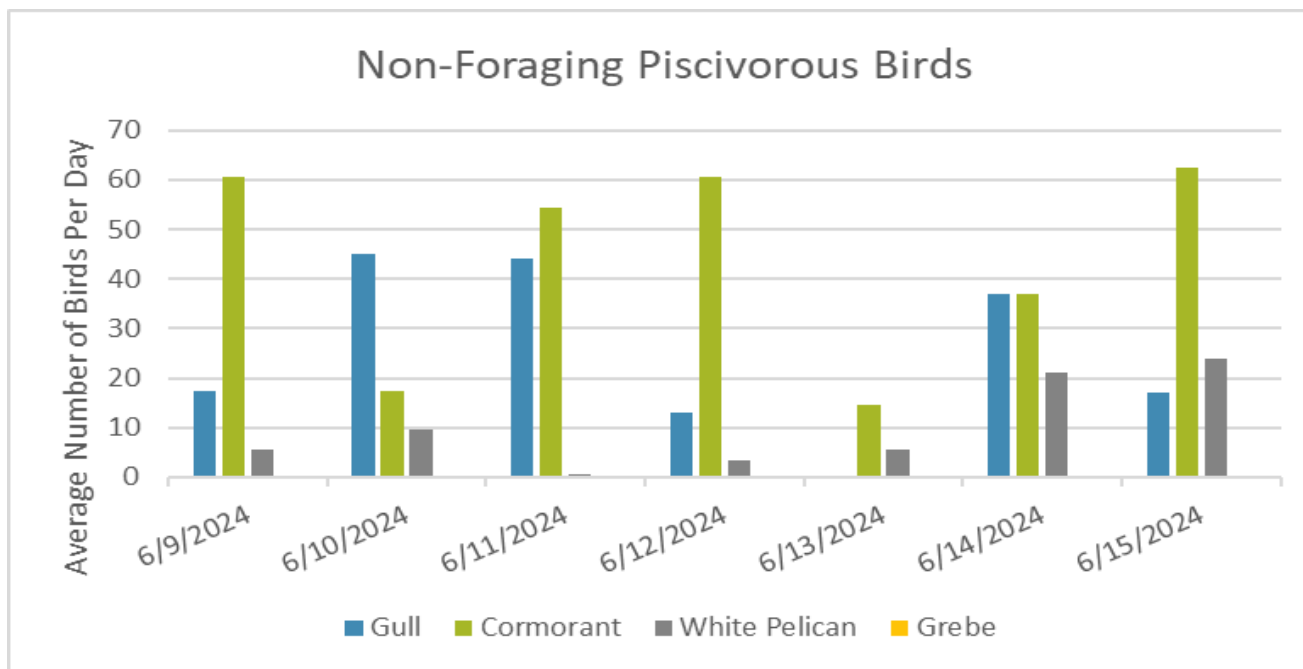


Avian predator tori lines and audio distress Bird Gard. 10/2023

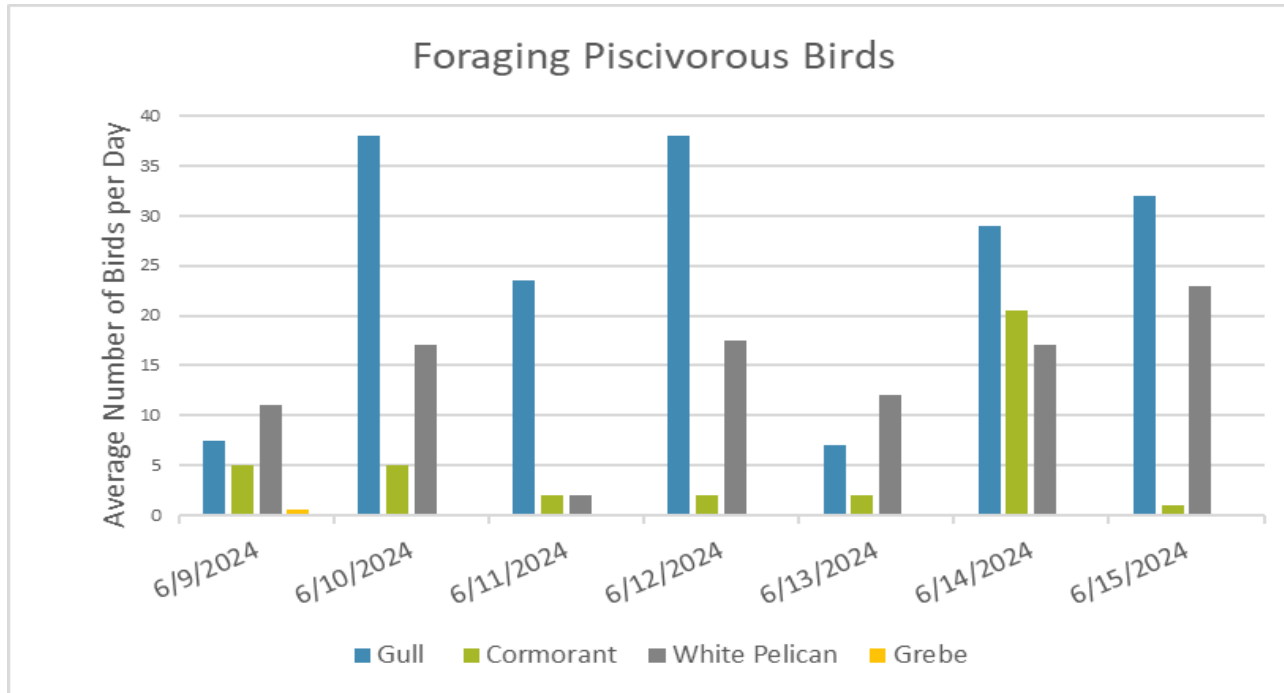
Tori lines at East Ladder entrances.

Bird Gard audio deterrent.



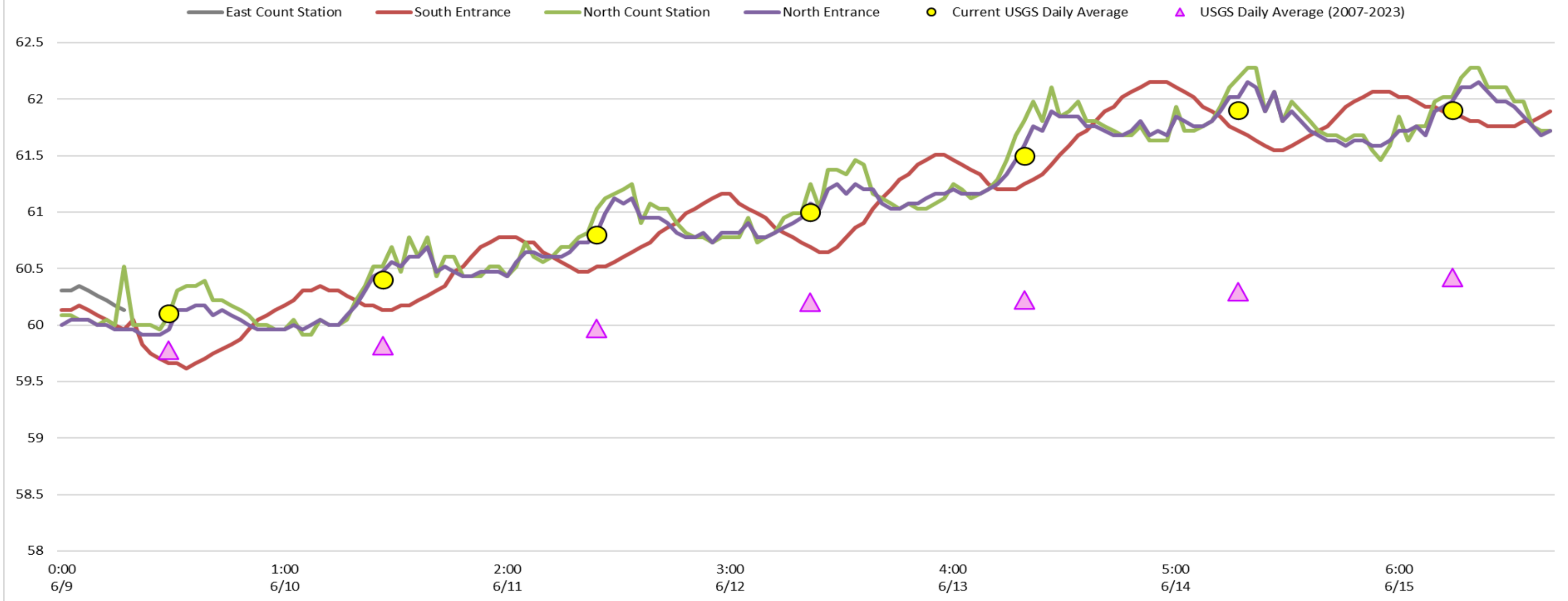


Counts are usually taken before the beginning of active hazing and typically after the end of daily hazing around 1400 hrs. USDA does one daily count in all zones and USACE does additional count in all zones.



Counts are taken before the beginning of active hazing and typically after the end of daily hazing around 1400 hrs.

### Adult Fish Ladders-River Temperatures



Secchi:		USGS
5.0	Sun	60.1
5.0	Mon	60.4
5.0	Tue	60.8
5.0	Wed	61.0
5.0	Thurs	61.5
4.5	Fri	61.9
5.0	Sat	61.9
4.9	AVG	61.1

## Reporting week data

Date:	North Ladder		East Ladder											
	Differential	N1 Depth	East Entrance					West Entrance			South Entrance			
			Differential	E1 Depth	E2 Depth	E3 Depth	JP 6	Differential	W1	W2	W3	Differential	S1	S2
6/9	1.3	11.3	1.5	6.6	11.0	11.6	12.6	1.4	10.8	10.8	-1.0	1.4	10.9	10.6
	1.2	11.4	1.6	5.9	10.8	11.4	11.9	1.5	10.4	10.4	-1.6	1.3	10.8	
6/10	1.3	11.0	1.4	6.2	11.4	12.1	12.1	1.3	11.1	11.1	-1.3	1.2	11.1	11.0
	1.1	10.7	1.5	5.6	11.1	11.8	11.6	1.3	10.8	10.8	-1.9	1.3	10.9	10.6
6/11	1.3	10.9	1.4	6.8	11.1	11.9	12.8	1.3	11.0	11.0	-0.7	1.4	10.9	10.5
	1.3	11.0	1.5	7.1	11.0	11.7	13.1	1.3	11.1	11.1	-0.3	1.3	10.8	10.5
6/12	1.3	11.0	1.5	6.2	11.0	11.9	12.2	1.3	10.8	10.8	-1.3	1.3	10.8	10.3
	1.0	10.8	1.5	6.6	11.2	12.0	12.6	1.4	10.7	10.7	-1.0	1.2	11.2	10.6
6/13	1.4	11.0	1.5	7.4	10.7	11.4	13.3	1.6	11.4	11.5	-0.2	1.3	11.0	10.8
	1.3	10.6	1.6	6.8	11.1	11.3	10.8	1.6	10.8	69.8	-3.7	1.3	10.7	11.0
6/14	1.2	11.1	1.6	5.1	10.7	11.8	11.1	1.5	10.2	10.3	-2.3	1.2	11.0	10.6
	2.0	10.9	1.4	5.7	11.4	11.3	11.7	1.2	11.0	11.0	-1.6	1.3	11.0	10.6
6/15	1.2	11.0	1.5	5.0	11.2	11.3	11.0	1.4	10.2	10.2	-2.4	1.3	10.8	10.5
	1.1	10.9	1.5	4.0	11.2	11.4	10.0	1.5	9.9	10.0	-3.3	1.3	11.0	10.6
<b>AVG:</b>	<b>1.3</b>	<b>11.0</b>	<b>1.5</b>	<b>6.1</b>	<b>11.1</b>	<b>11.6</b>	<b>11.9</b>	<b>1.4</b>	<b>10.7</b>	<b>15.0</b>	<b>-1.6</b>	<b>1.3</b>	<b>10.9</b>	<b>10.6</b>

*Fishways inspected twice daily*



American White Pelican in SW4 west of 197 bridge at 1130pm after lights out on roadway. About ~20 feeding on waters west of main spillway at TDA. Artificial light provided on Oregon shore and significant moonlight this night 6/15/2024. Gulls left the area when bridge lights went out at 1100pm.