

# The Dalles Dam Fishway Status Report

5/26/24

Inspection Period 5/19 - 5/25, 2024

## THE DALLES DAM



US Army Corps  
of Engineers  
Portland District

The Dalles Project-Fisheries  
P.O. Box 564  
The Dalles, OR 97058-9998  
Phone: 541-506-3800

<b>The Dalles Dam</b>	<b>Inspections OOC</b>	<b>Criteria Limit</b>	<b>Total Number of Inspections:</b> 14		<b>Temperature:</b> 58.2
			<b>Comments:</b> Fishways in full operation		<b>Weekly Ave. Secchi:</b> 4.1

### NORTH FISHWAY

Exit differential	0	≤ 0.5'			
Count station differential	0	≤ 0.3'			
Weir crest depth	0	1.0' ± 0.1'			
Entrance weir N1	0	depth (≥ 8')	Average for the week	10.9	
Entrance Differential	0	1.0' - 2.0'	Average for the week	1.3	
N2		Closed			
PUD Intake differential	6	≤ 0.5'			

### EAST FISHWAY

Exit differential	0	≤ 0.5'			
Removable weirs 154-157	0	Per forebay			
Weir 158-159 differential	0	1.1' ± 0.1'			
Count station differential	0	≤ 0.3'			
153 Weir crest depth	0	1' ± 0.1'	1.2' per FPP.		
Junction pool weir JP6	0	> 7.0'	Weekly average	12.2	
East entrance differential	0	1.0' - 2.0'	Weekly average	1.5	
Entrance weir E1	0	No criteria	Weekly average	5.2	
Entrance weir E2	0	depth (≥ 8')	Weekly average	11.2	
Entrance weir E3	0	depth (≥ 8')	Weekly average	11.2	
East channel velocity	0	1.5 - 4 fps	3.49 fps 5/1/24		
Transportation channel velocity	0	1.5 - 4 fps	4.41 fps 5/1/24		
North channel velocity	0	1.5 - 4 fps	2.52 fps 4/13/24		
South entrance velocity	0	1.5 - 4 fps	4.16 fps 5/11/24		
West entrance differential	0	1.0' - 2.0'	Weekly average	1.4	
Entrance weir W1	0	depth (≥ 8')	Weekly average	10.3	
Entrance weir W2	0	depth (≥ 8')	Weekly average	10.5	
Entrance weir W3	0	No criteria	Weekly average	-1.4	
South entrance differential	0	1.0' - 2.0'	Weekly average	1.3	
Entrance weir S1	0	depth (≥ 8')	Weekly average	10.6	
Entrance weir S2	0	depth (≥ 8')	Weekly average	10.6	

### JUVENILE BYPASS

Sluicelgate operation	0	Units 1,9,22	22 sluicelgate to remain open through the 2024 fish passage season		
Turbine trashrack drawdown	0	<1.5', biwkly	5/2/24 all in criteria		
Spill volume/pattern	0	1 to 22	ITS open, spilling gates 1-8		
Turbine Unit Priority	0	per FPP	MU1 and MU22 in criteria		
Gatewells	0	Weekly	Out-migrating juvenile salmonids in gatewells as of 5/11/2024		

## Current Outages

MU11 OOS 3/25/24 0630 – 5/30/24 1700 – Annual and Thrust Bearing Oil Cooler  
MU19 & MU20 Forced-OOS 10/07/2018 1205 – 10/31/2025 1700 T10 ACETYLENE

## Maintenance

Calibrations performed on 5/02, all within limits  
Spillway assessment; Spillgates 1- 9 rehab 2034. Spillway crane replace first priority. Investigating gate operation frequency reduction.  
Lamprey LPS contractor installed flumes and holding tank complete and tested. Planning operation start mid May pending OM manual.  
DC lower guide bearing pump replaced on FU1

## Predators

No recent otter sign or sea lion sightings. Pelicans showed up in small numbers, foraging in SW4, SW3 and PH1.  
Bird Gard sound system installed on BPA towers 3/14. Sound system turned on and set to 24 hour broadcast with regular staff visits.  
Tori lines installed at east, west and south. Mobile Bird Gard operating at peninsula in SW4. Gull effigies covered due to falconry.  
DCCO on BPA towers greatly reduced and easily flushed from towers. No indication of egg laying. USDA Pyro and audio deterrents daily.  
Falconry started 27 April , few days left to be complete by May 27.  
Gull take (all breeding adult CAGU) occurring in SW4, reducing gull numbers during USDA boat coverage but uncertain if reducing predation.

## Researchers

USGS temperature link- [May](#)  
4 Peaks fish count Resumed 4/1  
15 new stomachs from gulls taken. Most were adult plumage and males. Begin take of fish GI/Stomach contents.  
USDA continue lethal gull take in SW4, mostly morning and mid day up to 15 samples per week. DCCO do not present opportunities for take.  
WDFW Dam Angling begin 30 April 2024

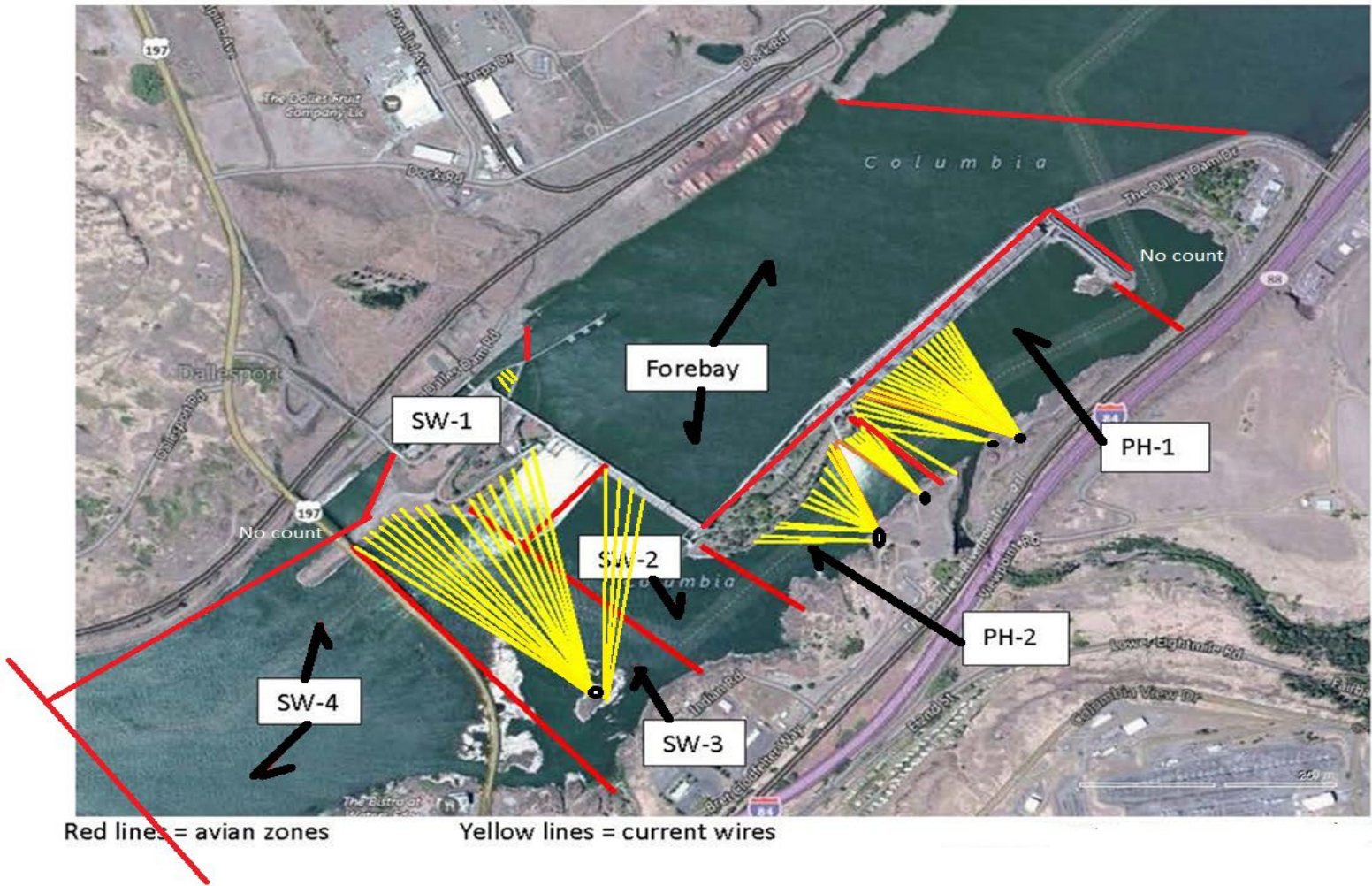
## Operations

Both fishladders in full operation.  
Spillway opened 4/10 40%

Approved by: Ron Twiner, Operation Project Manager, The Dalles Dam



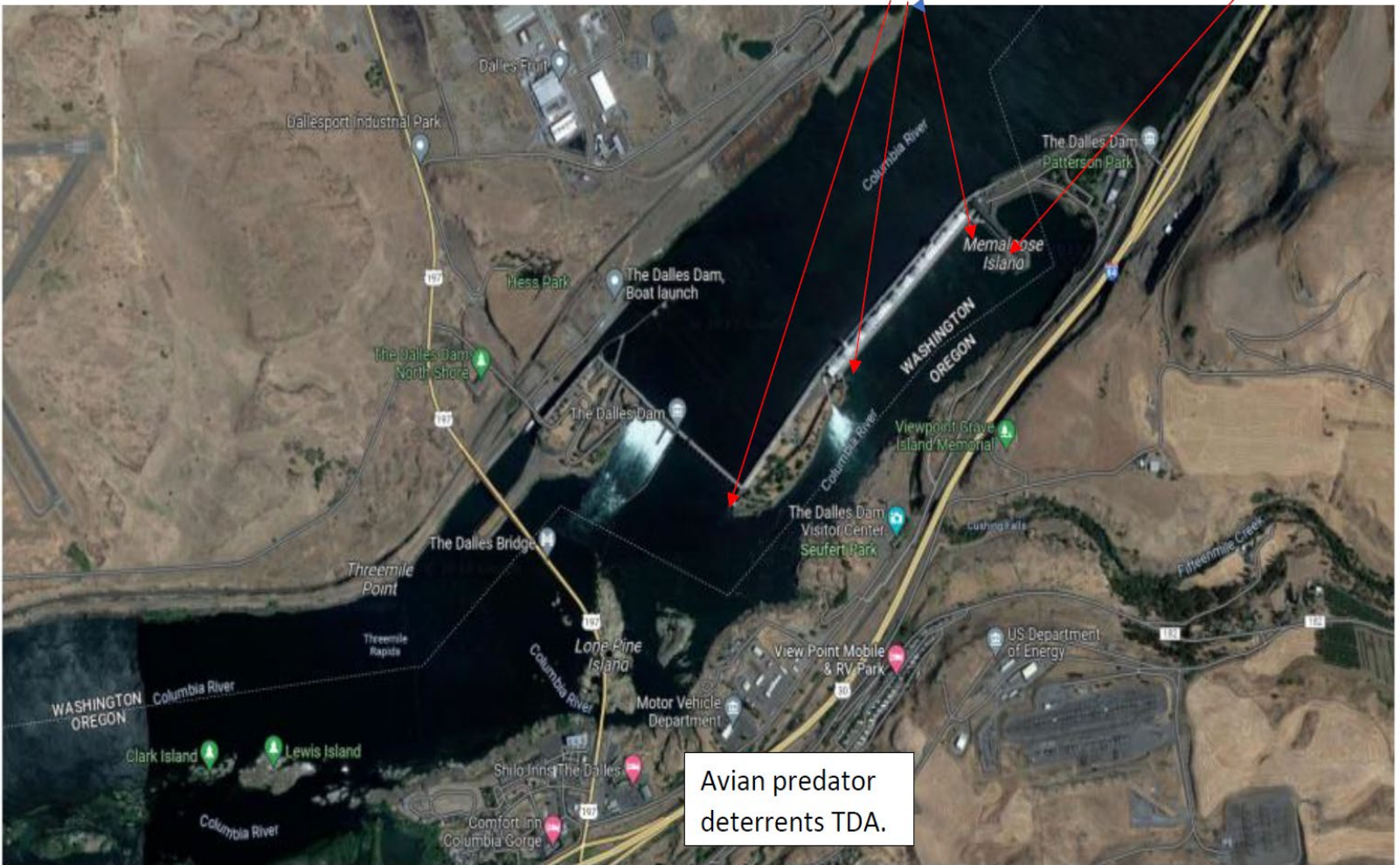
# Bird Count Zones, Avian Lines and Deterrent Sites



Avian predator tori lines and audio distress Bird Gard. 10/2023

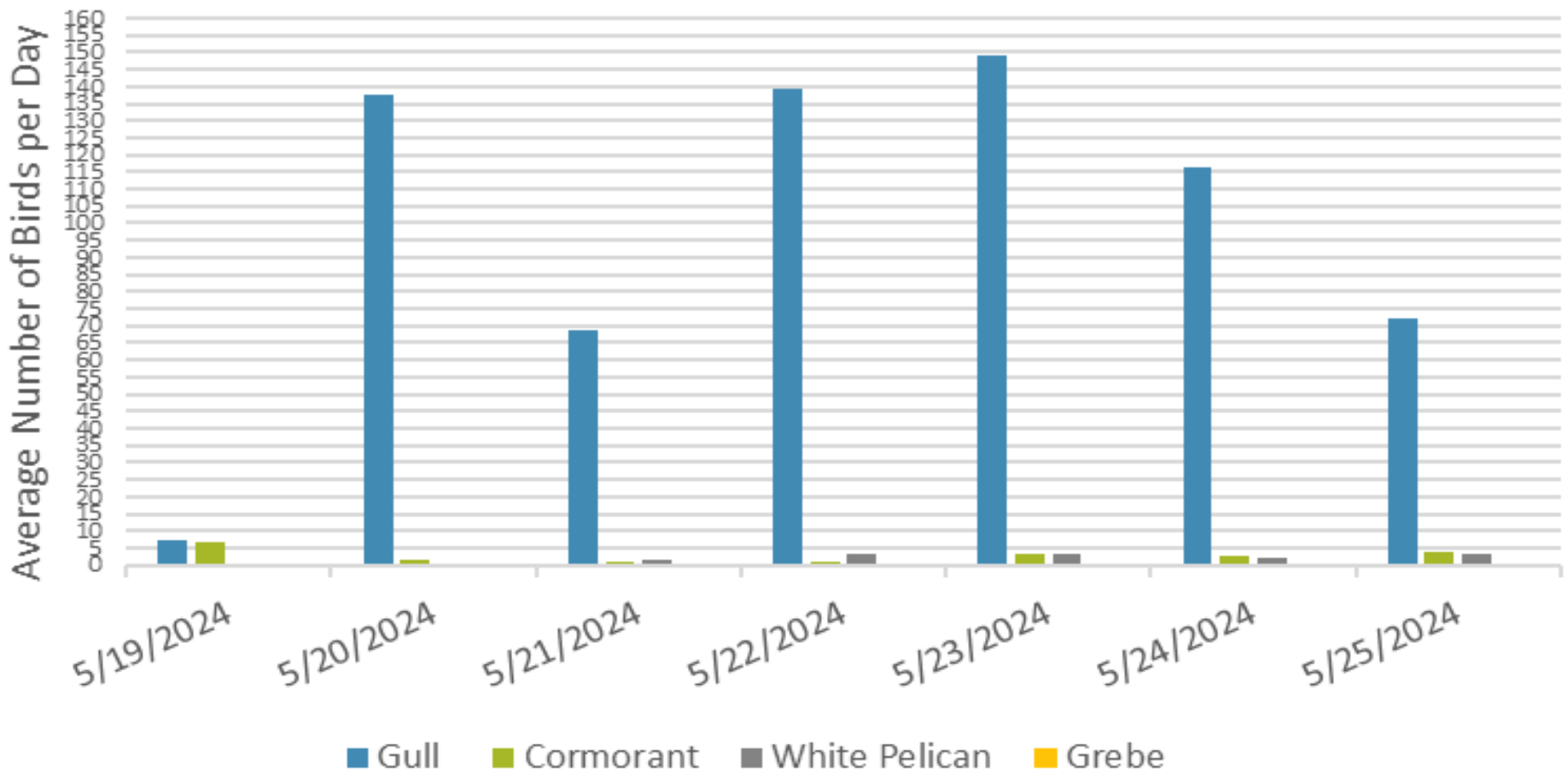
Tori lines at East Ladder entrances.

Bird Gard audio deterrent.



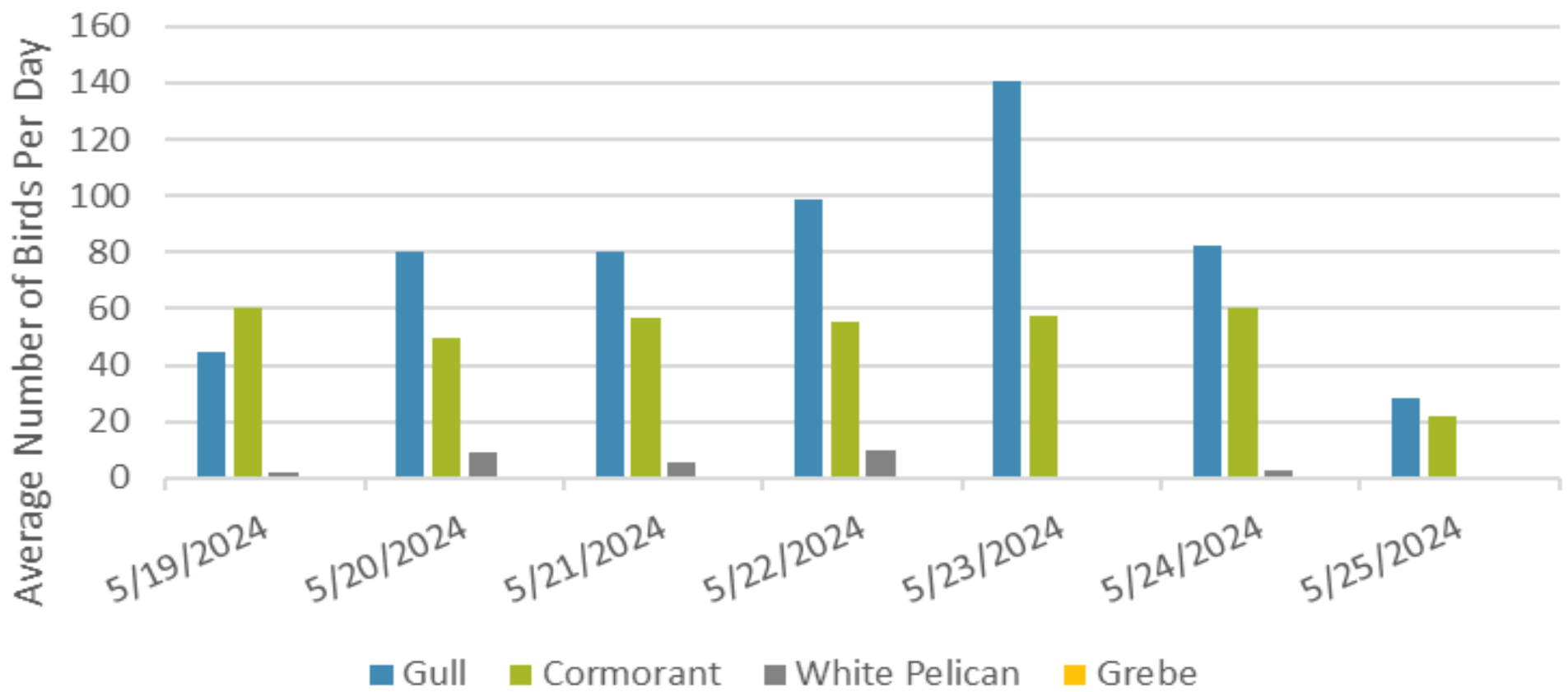


### Foraging Piscivorous Birds

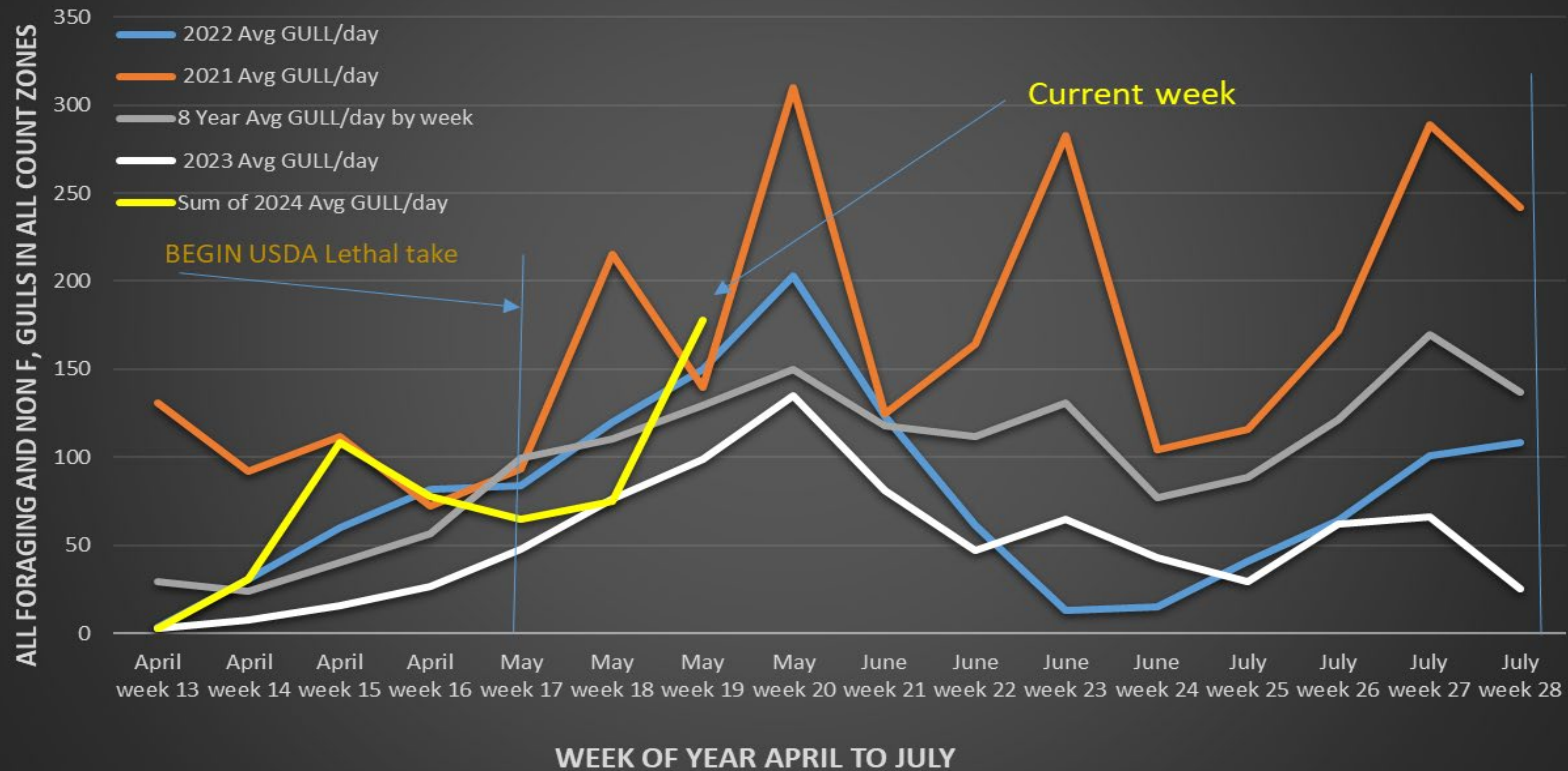


10 lethal take of CAGU during late morning and early afternoon during this week. Deterrents may reduce daytime feeding but may be increasing nighttime predation, which is presently unmonitored. Nighttime monitoring under development, along with dialogue with ODOT to alter lights on 197 bridge.

### Non-Foraging Piscivorous Birds



## TDA Daily Avg # of GULLS by Week, April to July 2021, 2022, 2023 and 2024 Compared to Previous 8 years Daily Mean.



Counts for this week were explicitly taken prior to USDA WS daily shift and after finishing work in the evening.  
Indicating gull feeding outside of pyro schedule and lethal take

### Adult Fish Ladders-River Temperatures

— East Count Station    — South Entrance    — North Count Station    — North Entrance    ● Current USGS Daily Average    ▲ USGS Daily Average (2007-2023)



Secchi:		USGS
4.0	Sun	58.3
4.0	Mon	58.4
5.0	Tue	58.3
5.0	Wed	58.0
4.0	Thurs	58.0
3.0	Fri	58.2
4.0	Sat	58.0
4.1	AVG	58.2

## Reporting week data

Date:	North Ladder		East Ladder											
	Differential	N1 Depth	East Entrance					West Entrance				South Entrance		
			Differential	E1 Depth	E2 Depth	E3 Depth	JP 6	Differential	W1	W2	W3	Differential	S1	S2
5/19	1.4	10.9	1.6	4.8	12.2	11.5	11.7	1.5	10.3	10.4	-1.8	1.4	10.9	10.8
	1.3	11.0	1.5	5.1	11.5	11.8	12.0	1.4	10.5	10.7	-1.5	1.3	11.0	10.8
5/20	1.4	10.9	1.6	6.8	8.3	8.3	13.8	1.5	8.1	8.2	0.2	1.5	8.8	8.8
	1.0	10.7	1.5	5.6	11.3	11.7	12.6	1.5	10.6	10.6	-1.0	1.3	10.8	10.8
5/21	1.4	11.0	1.5	6.1	11.3	11.8	13.1	1.3	11.0	11.1	-0.6	1.3	11.0	11.1
	1.3	10.9	1.5	5.1	11.5	11.9	12.1	1.5	10.4	10.5	-1.9	1.4	10.4	10.6
5/22	1.4	11.0	1.5	5.1	11.5	12.2	12.0	1.4	10.8	11.0	-1.6	1.3	10.8	11.0
	1.2	11.0	1.5	4.2	11.5	12.2	11.1	1.4	10.4	10.5	-2.6	1.4	10.5	10.6
5/23	1.4	10.9	1.6	5.5	11.1	11.8	12.4	1.5	10.3	10.5	-1.3	1.3	10.7	10.8
	1.3	10.9	1.5	5.1	11.2	11.9	12.1	1.5	10.2	10.4	-1.6	1.4	10.6	10.6
5/24	1.3	11.1	1.5	5.4	11.3	12.0	12.4	1.3	10.6	10.8	-1.3	1.4	10.8	10.6
	1.3	10.9	1.4	5.6	11.9	11.8	12.6	1.5	10.6	10.8	-1.0	1.3	10.8	10.7
5/25	1.2	10.8	1.6	4.6	10.9	10.8	11.6	1.4	10.7	10.7	-1.8	1.3	10.6	10.7
	1.2	11.0	1.5	4.5	11.7	11.8	11.5	1.4	10.5	10.5	-2.0	1.3	10.6	10.7
<b>AVG:</b>	<b>1.3</b>	<b>10.9</b>	<b>1.5</b>	<b>5.2</b>	<b>11.2</b>	<b>11.5</b>	<b>12.2</b>	<b>1.4</b>	<b>10.3</b>	<b>10.5</b>	<b>-1.4</b>	<b>1.3</b>	<b>10.6</b>	<b>10.6</b>

*Fishways inspected twice daily*







