

The Dalles Dam Fishway Status Report

5/12/24

Inspection Period 5/12 - 5/18, 2024

THE DALLES DAM



US Army Corps
of Engineers
Portland District

The Dalles Project-Fisheries
P.O. Box 564
The Dalles, OR 97058-9998
Phone: 541-506-3800

The Dalles Dam	Inspections OOC	Criteria Limit	Total Number of Inspections: 14		Temperature: 56.7
			Comments: Fishways in full operation		Weekly Ave. Secchi: 4.7

NORTH FISHWAY

Exit differential	0	≤ 0.5'	
Count station differential	0	≤ 0.3'	
Weir crest depth	0	1.0' ± 0.1'	
Entrance weir N1	0	depth (≥ 8')	Average for the week 10.8
Entrance Differential	0	1.0' - 2.0'	Average for the week 1.3
N2		Closed	
PUD Intake differential	6	≤ 0.5'	

EAST FISHWAY

Exit differential	0	≤ 0.5'	
Removable weirs 154-157	0	Per forebay	
Weir 158-159 differential	0	1.1' ± 0.1'	
Count station differential	0	≤ 0.3'	
153 Weir crest depth	0	1' ± 0.1'	1.2' per FPP.
Junction pool weir JP6	0	> 7.0'	Weekly average 11.7
East entrance differential	0	1.0' - 2.0'	Weekly average 1.5
Entrance weir E1	0	No criteria	Weekly average 6.1
Entrance weir E2	0	depth (≥ 8')	Weekly average 11.1
Entrance weir E3	0	depth (≥ 8')	Weekly average 11.1
East channel velocity	0	1.5 - 4 fps	3.49 fps 5/1/24
Transportation channel velocity	0	1.5 - 4 fps	4.41 fps 5/1/24
North channel velocity	0	1.5 - 4 fps	2.52 fps 4/13/24
South entrance velocity	0	1.5 - 4 fps	4.16 fps 5/11/24
West entrance differential	0	1.0' - 2.0'	Weekly average 1.4
Entrance weir W1	0	depth (≥ 8')	Weekly average 10.5
Entrance weir W2	0	depth (≥ 8')	Weekly average 10.6
Entrance weir W3	0	No criteria	Weekly average -1.9
South entrance differential	0	1.0' - 2.0'	Weekly average 1.3
Entrance weir S1	0	depth (≥ 8')	Weekly average 10.8
Entrance weir S2	0	depth (≥ 8')	Weekly average 10.6

JUVENILE BYPASS

Sluiceway operation	0	Units 1,8,22	22 sluiceway to remain open through the 2024 fish passage season
Turbine trashrack drawdown	0	<1.5', biwklly	5/2/24 all in criteria
Spill volume/pattern	0	1 to 22	ITS open, spilling gates 1-8
Turbine Unit Priority	0	per FPP	MU1 and MU22 in criteria
Gatewells	0	Weekly	Out-migrating juvenile salmonids in gatewells as of 5/11/2024

Current Outages

MU11 OOS 3/25/24 0630 – 5/30/24 1700 – Annual and Thrust Bearing Oil Cooler
MU19 & MU20 Forced-OOS 10/07/2018 1205 – 10/31/2025 1700 T10 ACETYLENE

Maintenance

Calibrations performed on 5/02, all within limits
Spillway assessment; Spillgates 1- 9 rehab 2034. Spillway crane replace first priority. Investigating gate operation frequency reduction.
Lamprey LPS contractor installed flumes and holding tank complete and tested. Planning operation start mid May pending OM manual.
DC lower guide bearing pump replaced on FU1

Predators

No recent otter sign or sea lion sightings. Pelicans showed up in small numbers, feeding in SW4.
Bird Gard sound system installed on BPA towers 3/14. Sound system turned on to encourage raven raids on nest areas.
Tori lines installed at east, west and south. Mobile Bird Gard operating at peninsula in SW4. Gull effigies covered due to falconry.
DCCO on BPA towers greatly reduced and easily flushed from nests (37).
Falconry started 27 April , few days left but no longer continuous coverage.
Gull take (all breeding adult CAGU) occurring in SW4, reducing gull numbers during USDA boat coverage but not likely reducing predation.

Researchers

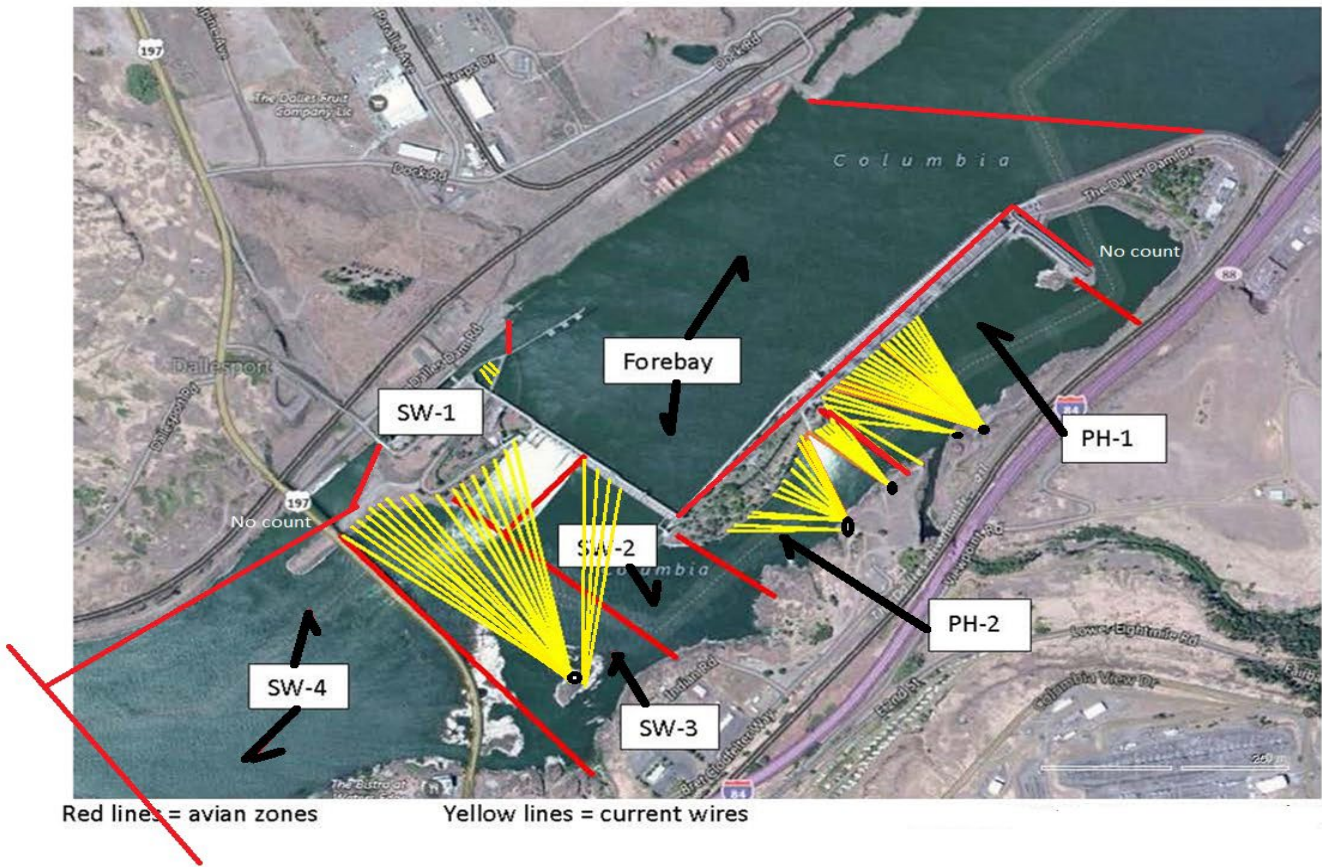
USGS temperature link- [May](#)
4 Peaks fish count Resumed 4/1
Many new stomachs from gulls taken. Most were juvenile plumage and males. Begin take fish GI/Stomach contents.
USDA continue lethal gull take in SW4, mostly morning and mid day. DCCO do not present opportunities for take.
WDFW Dam Angling begin 30 April 2024

Operations

Both fishladders in full operation.
Spillway opened 4/10 40%

Approved by: Ron Twiner, Operation Project Manager, The Dalles Dam

Bird Count Zones, Avian Lines and Deterrent Sites

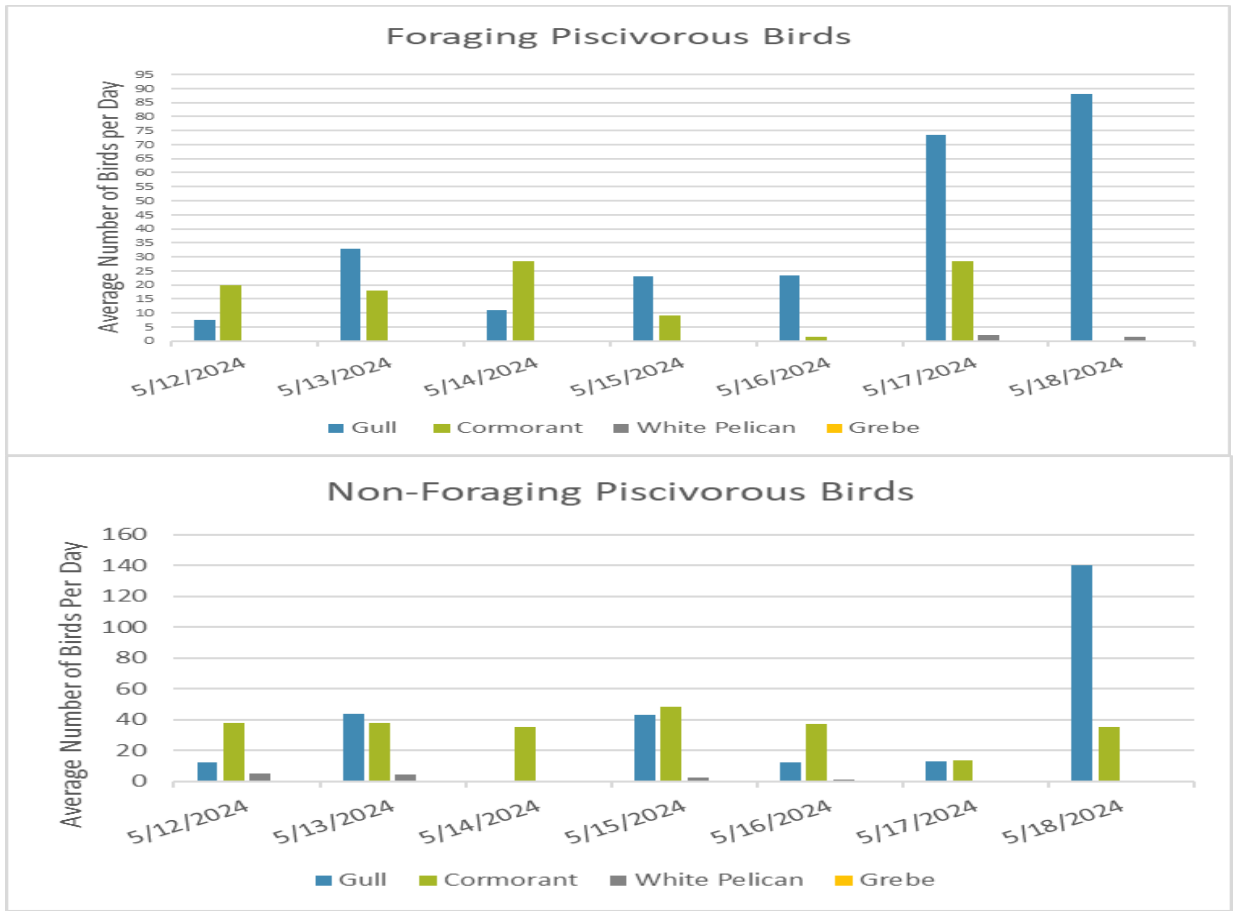


Avian predator tori lines and audio distress Bird Gard. 10/2023

Tori lines at East Ladder entrances.

Bird Gard audio deterrent.





Big increase in foraging and non-foraging Gulls on project. Many gulls showing up at sunset coming from east. 10 lethal take of CAGU during late morning and early afternoon during this week. Reducing daytime feeding but may be increasing nighttime predation, which is presently unmonitored. Nighttime monitoring under development, along with dialogue with ODOT to alter lights on 197 bridge. DCCO numbers will likely rebound as falconry ends though little sign of active nesting so far.

Adult Fish Ladders-River Temperatures

— East Count Station — South Entrance — North Count Station — North Entrance ● Current USGS Daily Average ▲ USGS Daily Average (2007-2023)



Secchi:		USGS
4.0	Sun	55.1
5.0	Mon	55.2
4.0	Tue	55.7
5.0	Wed	56.7
5.0	Thurs	57.6
5.0	Fri	58.0
5.0	Sat	58.3
4.7	AVG	56.7

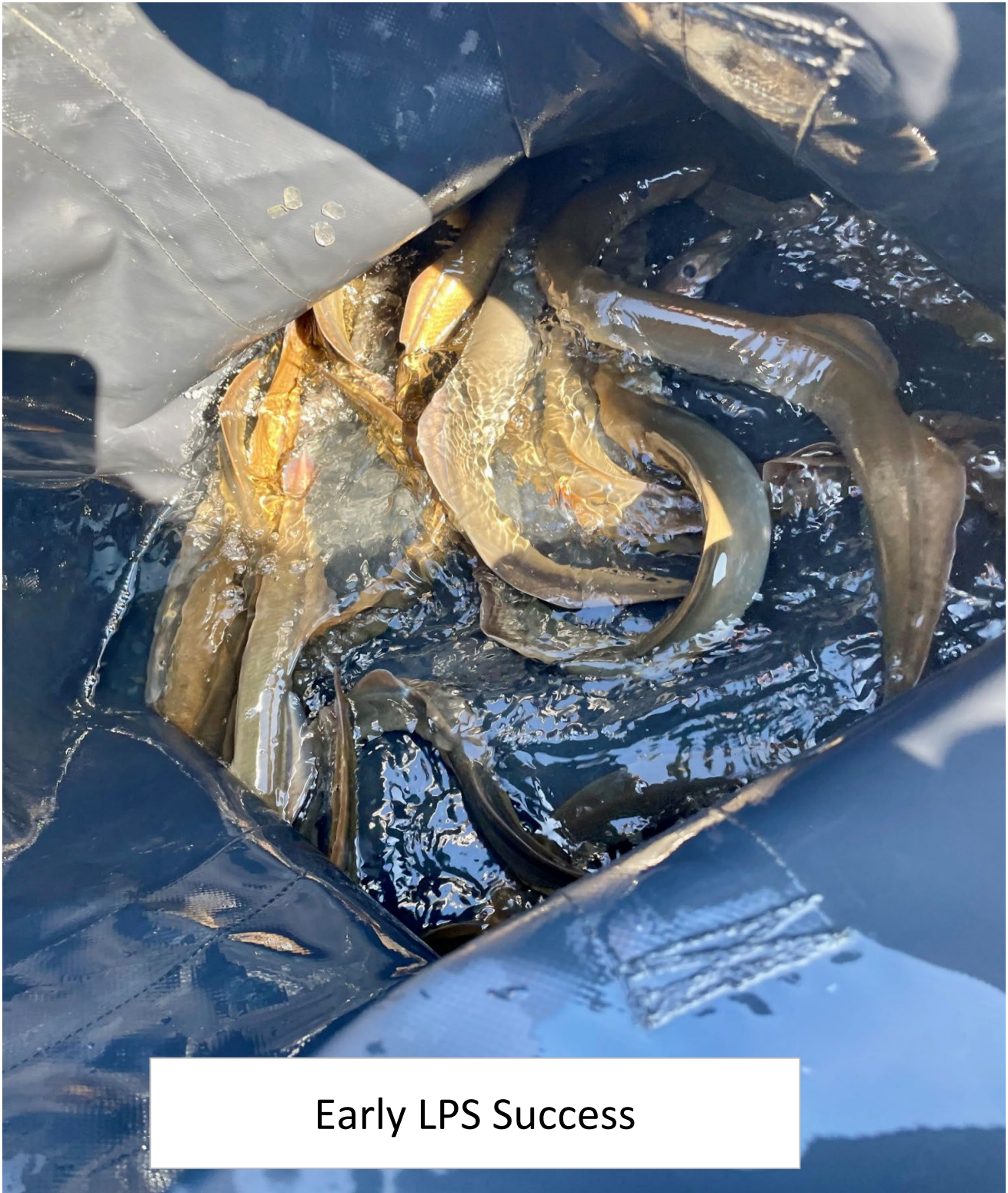
Reporting week data

Date:	North Ladder		East Ladder											
			East Entrance					West Entrance			South Entrance			
	Differential	N1 Depth	Differential	E1 Depth	E2 Depth	E3 Depth	JP 6	Differential	W1	W2	W3	Differential	S1	S2
5/12	1.1	10.4	1.5	4.6	10.8	11.1	9.7	1.3	10.3	10.4	-3.6	1.3	10.6	10.2
	1.3	10.2	1.4	4.9	11.2	11.4	10.0	1.3	10.4	10.5	-3.5	1.3	10.6	10.3
5/13	1.1	10.4	1.5	5.2	11.2	11.4	10.2	1.3	10.3	10.4	-3.2	1.3	10.7	10.4
	1.1	10.3	TDE work					1.3	10.3	10.4	-3.0	1.3	10.7	10.3
5/14	1.2	10.8	TDE work					1.5	9.8	9.9	-3.3	1.4	10.4	10.4
	1.2	10.3	1.5	6.5	11.1	11.4	11.5	1.3	10.5	10.6	-2.0	1.4	10.8	10.7
5/15	1.4	10.6	1.4	7.7	10.9	11.0	12.7	1.3	10.9	11.0	-0.9	1.3	10.8	10.9
	1.4	10.7	1.6	7.1	10.6	10.8	12.2	1.4	10.4	10.6	-1.3	1.4	10.9	10.7
5/16	1.4	12.8	1.5	7.8	11.1	11.4	12.8	1.3	10.9	11.0	-0.5	1.3	11.1	11.1
	1.3	10.7	1.4	7.1	11.1	11.4	12.1	1.5	10.4	10.5	-1.3	1.4	11.2	11.2
5/17	1.4	10.9	1.5	6.1	11.7	11.9	13.0	1.4	11.2	11.4	-0.5	1.4	10.6	10.5
	1.3	10.9	1.6	5.3	11.2	11.4	12.3	1.5	10.5	10.6	-1.3	1.4	10.8	10.7
5/18	1.3	10.9	1.5	5.4	11.3	11.5	12.3	1.4	10.8	10.9	-1.2	1.3	10.6	10.8
	1.3	10.8	1.5	5.1	11.2	11.5	12.1	1.5	10.5	10.6	-1.5	1.2	11.0	10.9
AVG:	1.3	10.8	1.5	6.1	11.1	11.3	11.7	1.4	10.5	10.6	-1.9	1.3	10.8	10.6

Fishways inspected twice daily



Lights under The Dalles bridge



Early LPS Success



PH1-just outside fish office