

# The Dalles Dam Fishway Status Report

3/3/24

Inspection Period 2/25-3/2, 2024

THE DALLES DAM



US Army Corps  
of Engineers  
Portland District

The Dalles Project-Fisheries  
P.O. Box 564  
The Dalles, OR 97058-9998  
Phone: 541-506-3800

The Dalles Dam	Inspections OOC	Criteria Limit	Total Number of Inspections: 9			Temperature: 42.2
			Comments: E1 under modification			Weekly Ave. Secchi: 4.0

## NORTH FISHWAY Dewater 2/14

Exit differential		≤ 0.5'								
Count station differential		≤ 0.3'								
Weir crest depth		1.0' ± 0.1'								
Entrance weir N1		depth (≥ 8')	Average for the week	9.7						
Entrance Differential		1.0' - 2.0'	Average for the week	1.3						
N2		Closed								
PUD Intake differential		≤ 0.5'								

## EAST FISHWAY Return 2/13

Exit differential	0	≤ 0.5'								
Removable weirs 154-157	0	Per forebay								
Weir 158-159 differential	0	1.1' ± 0.1'								
Count station differential	0	≤ 0.3'								
153 Weir crest depth	0	1' ± 0.1'								
Junction pool weir JP6	0	> 7.0'								
East entrance differential	0	1.0' - 2.0'								
Entrance weir E1	0	No criteria								
Entrance weir E2	7	depth (≥ 8')								
Entrance weir E3	7	depth (≥ 8')								
East channel velocity	1	1.5 - 4 fps	5.15 fps 3/2/24	E-1 gate under LPS modification						
Transportation channel velocity	0	1.5 - 4 fps								
North channel velocity	0	1.5 - 4 fps	3.38 fps 2/5/24							
South entrance	1	1.5 - 4 fps	3.96 fps 2/19/24							
West entrance differential	1	1.0' - 2.0'								
Entrance weir W1	1	depth (≥ 8')								
Entrance weir W2	1	depth (≥ 8')								
Entrance weir W3	0	No criteria								
South entrance differential	0	1.0' - 2.0'								
Entrance weir S1	1	depth (≥ 8')								
Entrance weir S2	1	depth (≥ 8')								

## JUVENILE BYPASS

Sluiceway operation	0	Units 1, 18	1-1 & 18-3 gates open. Endgate opened 3/1.							
Turbine trashrack drawdown	0	<1.5', biwkly								
Spill volume/pattern	0	1 to 22	ITS opened 3/1/24							
Turbine Unit Priority	0	per FPP								
Gatewells	0	Weekly	Nothing to report							

## Current Outages

MU19 & MU20 FOOS 10/07/2018 1205 – 10/31/2025 1700 T10 ACETYLENE

MU4 OOS 04/17/2023 0630 – 4/25/2024 1700, BREAKER REPAIR/REPLACEMENT

T3 OOS 2/12/24 0700 – 3/04/24 1200 2yr Testing

MU5 OOS 2/12/24 – 3/21/24 6yr O/H

MU6 OOS 2/12/24 – 3/04/24 Annual

## Maintenance

Spillway assessment; Spillgates 1- 9 rehab 2034. Spillway crane replace first priority. Investigating gate operation frequency reduction. Lamprey LPS contractor installed Flumes and holding tank complete. Maintenance modified extension with lamprey plate for weir E1. North fish ladder returned to service. Most maintenance competed. Rock slide blocking 1 weir orifice. Not able to clear due to safety concerns.

## Predators

One otter sighting this week at north exit 3/1/24.  
Bird Gard sound system off this week due to eagles.  
Tori lines installed at east, south and west entrances removed during dewatering prep.  
This time of year presence of many eagles reduces numbers of cormorants, gulls and other fish eating birds. Herons undeterred by eagles.  
Falconry contract in PR for 2024, projected to use RC boat as well in difficult to reach areas.  
Eagles remain in unusually high numbers in Westrick. 10 active on project. One dead juvenile eagle transferred to WDFW.2/28

## Research/Construction/Contractors

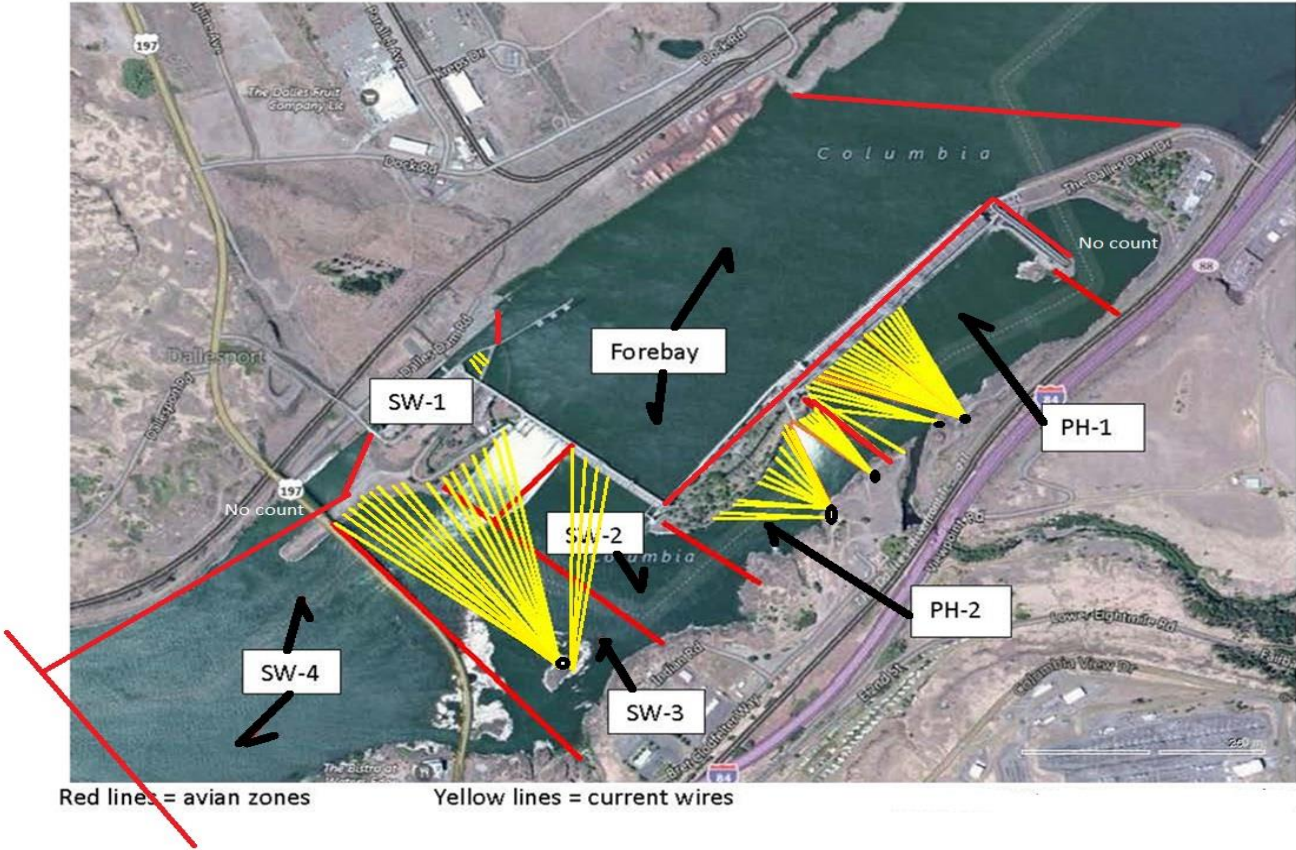
USGS temperature link- [February](#)  
4 Peaks fish count ended 10/31  
Making preparations to sample avian GI/Stomach contents.

## Operations

Sluice endgate opened 3/1.  
Both fishladder in full operation.  
Spillway closed

Approved by: Ron Twiner, Operation Project Manager, The Dalles Dam

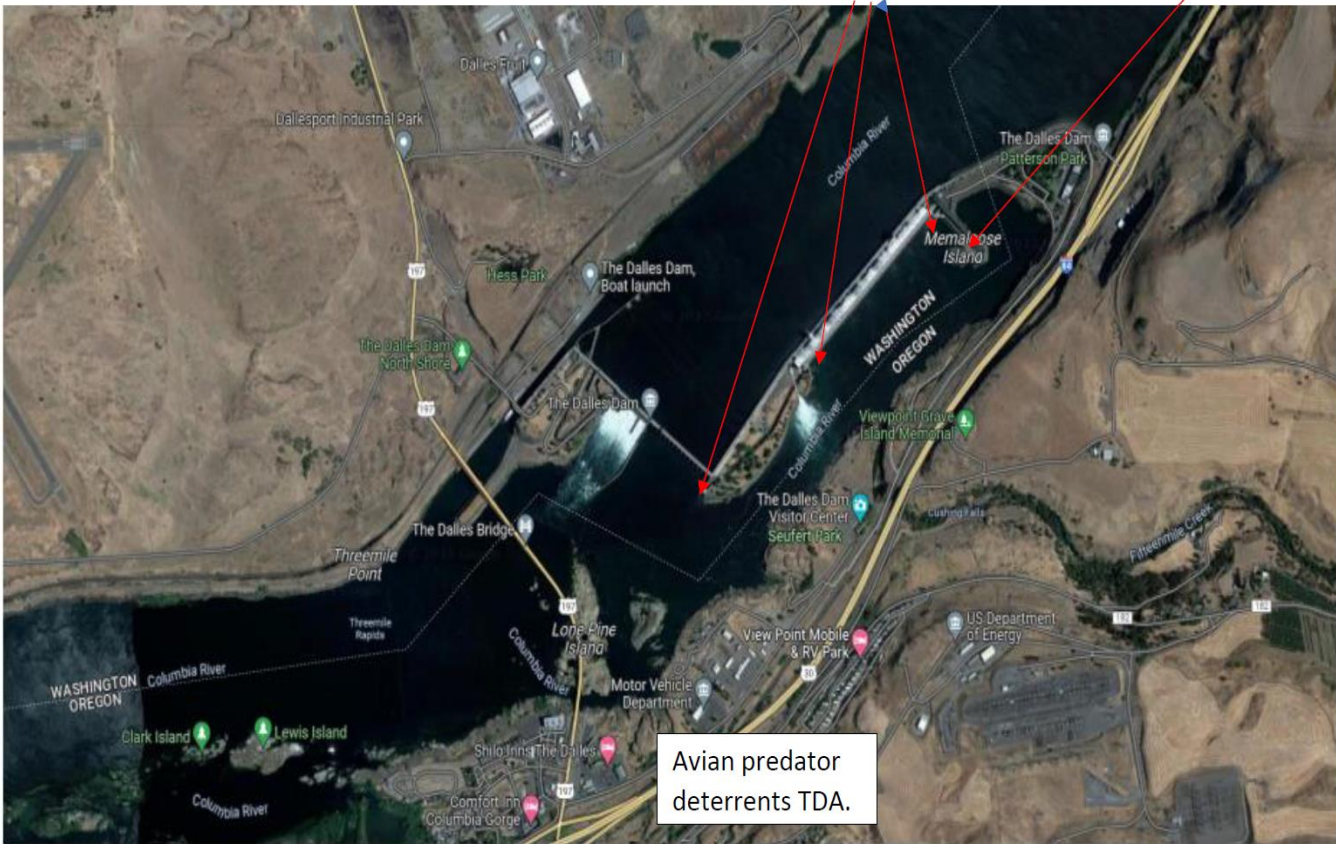
# Bird Count Zones, Avian Lines and Deterrent Sites



Avian predator tori lines and audio distress Bird Gard. 10/2023

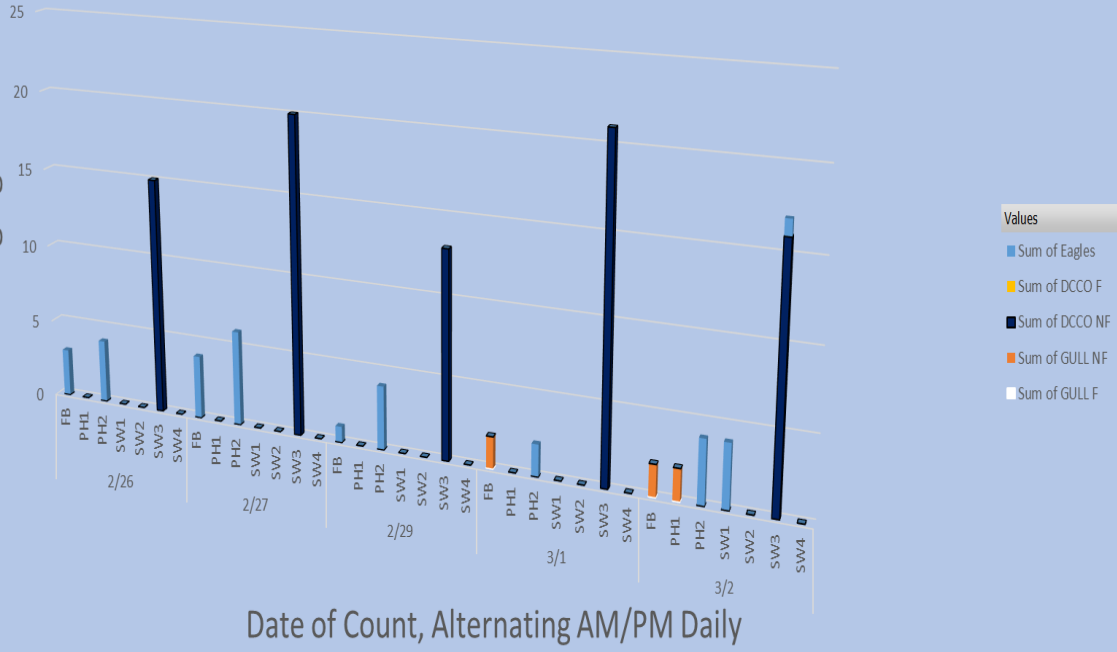
Tori lines at East Ladder entrances.

Bird Gard audio deterrent.



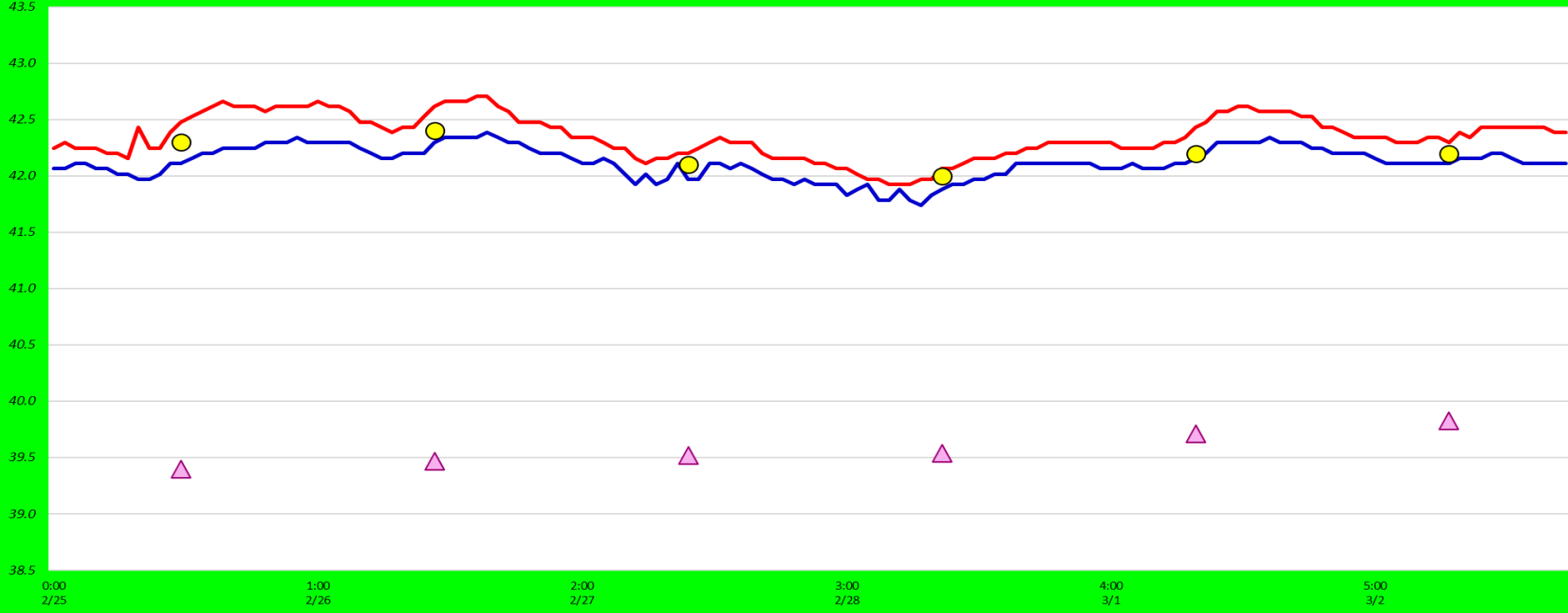
# Avian Count at TDA, 2/26 to 3/2/2024

All Birds in Count Zones, F-Foraging, NF Non-foraging



### East Fish Ladder-River Temperatures

— East Count Station    — South Entrance    ● Current USGS Daily Average    ▲ USGS Daily Average (2007-2023)



2/25	Secchi:		USGS
		Sun	42.3
		Mon	42.4
		Tue	42.3
3/2		Wed	41.9
	4.0	Thurs	42.0
	4.0	Fri	42.2
	4.0	Sat	42.2
	4.0	AVG	42.2

## Reporting week data

Date:	North Ladder		East Ladder												
	Differential	N1 Depth	East Entrance					West Entrance			South Entrance				
			Differential	E1 Depth	E2 Depth	E3 Depth	JP 6	Differential	W1	W2	W3	Differential	S1	S2	
2/25	NL OOS		Fish unit(s) pre-season systems checks												
2/26															
2/27			1.0	13.8	6.7	6.8	10.8	0.8	7.1	7.1	-2.5	0.9	7.2	7.3	
2/28	PUD OOS	9.3	1.6	12.5	6.8	6.8	9.5	1.4	10.5	10.5	-4.0	1.4	10.0	9.9	
2/29															
		1.3	9.9	1.5	13.0	7.3	7.3	10.0	1.2	10.8	10.8	-3.3	1.3	10.6	10.4
3/1		1.3	9.9	1.4	13.4	6.7	6.7	10.4	1.3	10.0	10.3	0.3	1.4	10.8	10.8
		1.3	9.8	1.4	13.7	7.2	7.3	10.7	1.4	10.3	10.3	-3.5	1.3	10.6	10.4
3/2		1.3	9.8	1.3	13.3	8.0	8.0	10.3	1.4	10.2	10.2	-3.2	1.4	10.8	10.8
		1.3	9.8	1.2	13.4	8.5	8.6	10.4	1.3	10.4	10.4	-3.1	1.3	10.2	10.3
<b>AVG:</b>		1.3	9.7	1.3	13.3	7.3	7.4	10.3	1.3	9.9	9.9	-2.7	1.3	10.0	10.0

*Fishways inspected twice daily 3/1-11/30*





River otter observed in north fishladder. Attempting to trap.



New Lamprey plates installed on weir E1. Remaining weirs planned for next winter outage.