

The Dalles Dam Fishway Status Report

9/17/23

Inspection Period 09/10-09/16, 2023

THE DALLES DAM



US Army Corps
of Engineers
Portland District

The Dalles Project-Fisheries
P.O. Box 564
The Dalles, OR 97058-9998
Phone: 541-506-3800

The Dalles Dam	Inspections OOC	Criteria Limit	Total Number of Inspections: 14		Temperature: 69.0 °F
			Comments: Oil boom back in place east exit.		Weekly Ave. Secchi: 5.6

NORTH FISHWAY

Exit differential	0	≤ 0.5'			
Count station differential	0	≤ 0.3'			
Weir crest depth	0	1.0' ± 0.1'			
Entrance weir N1	0	depth (≥ 8')	Average for the week	9.4	
Entrance Differential	0	1.0' - 2.0'	Average for the week	1.4	
N2		Closed			
PUD Intake differential	4	≤ 0.5'	Likely due to aquatic weeds on intake.		

EAST FISHWAY

Exit differential	0	≤ 0.5'			
Removable weirs 154-157	0	Per forebay			
Weir 158-159 differential	0	1.1' ± 0.1'			
Count station differential	0	≤ 0.3'			
153 Weir crest depth	0	1' ± 0.1'	1.0' per FPP.		
Junction pool weir JP6	0	> 7.0'	Weekly average	10.4	
East entrance differential	0	1.0' - 2.0'	Weekly average	1.5	
Entrance weir E1	0	No criteria	Weekly average	2.9	
Entrance weir E2	0	depth (≥ 8')	Weekly average	10.9	
Entrance weir E3	0	depth (≥ 8')	Weekly average	10.9	
Collection channel velocity	0	1.5 - 4 fps	2.18 west 9/5/23		
Transportation channel velocity	0	1.5 - 4 fps	2.96 fps 9/5/23		
North channel velocity	0	1.5 - 4 fps	3.08 fps 9/13/23		
South entrance	0	1.5 - 4 fps	4.01 fps 9/13/23		
West entrance differential	0	1.0' - 2.0'	Weekly average	1.5	
Entrance weir W1	2	depth (≥ 8')	Weekly average	8.3	Due to low tailwater conditions
Entrance weir W2	2	depth (≥ 8')	Weekly average	8.3	Due to low tailwater conditions
Entrance weir W3	0	No criteria	Weekly average	-2.4	
South entrance differential	0	1.0' - 2.0'	Weekly average	1.4	
Entrance weir S1	1	depth (≥ 8')	Weekly average	8.3	
Entrance weir S2	0	depth (≥ 8')	Weekly average	8.3	Due to low tailwater conditions

JUVENILE BYPASS

Sluiceway operation	0	Units 1, 8, 18	1-8-18 gates open.		
Turbine trashrack drawdown	0	<1.5', biwklly	9/16/2023 All MUs and FUs in criteria.		
Spill volume/pattern	0	1 to 22	Spill closed		
Turbine Unit Priority	0	per FPP			
Gatewells	0	Weekly	8/27/2023 .		

Current Outages

MU4 OOS 04/17/2023 0630 – 9/28/2023 1700, ANNUAL
MU19 & MU20 FOOS 10/07/2018 1205 – 10/31/2025 1700 T10 ACETYLENE

Maintenance

Working on contract for north ladder vegetation removal in Feb
Planning spill gates 9 and 10 cable and gearbox swap. Possible this fall/winter.
Spillway assessment; Spillgates 1- 9 rehab 2034. Spillway crane replace first priority. Reviewing gate operation frequency.
Diffuser grating damage discovered at east entrance. Dive repair completed 8/22. Reduced flow 5kcf to 4 kcf rest of season.
Fixed East exit oil boom on 9/13
Calibrations all within criteria 9/15

Predators

Northern Pikeminnow Management Program 2315 YTD
Planning removal of bass/walleye/catfish from all dewaterings for gut sample analysis. Working on permit.
Trial of Tori lines installed at east, south and west entrance
Pacific Lamprey translocation season ended 9/6 w/ a grand total of 1501 fish captured/translocated
Trial of Tori lines installed at east exit, working effectively to keep DCCO out of ladder.
Very few gulls on project. DCCO unable to feed at entrances and exit but likely feeding in SW3 and SW4. Pelicans absent.

Research/Construction/Contractors

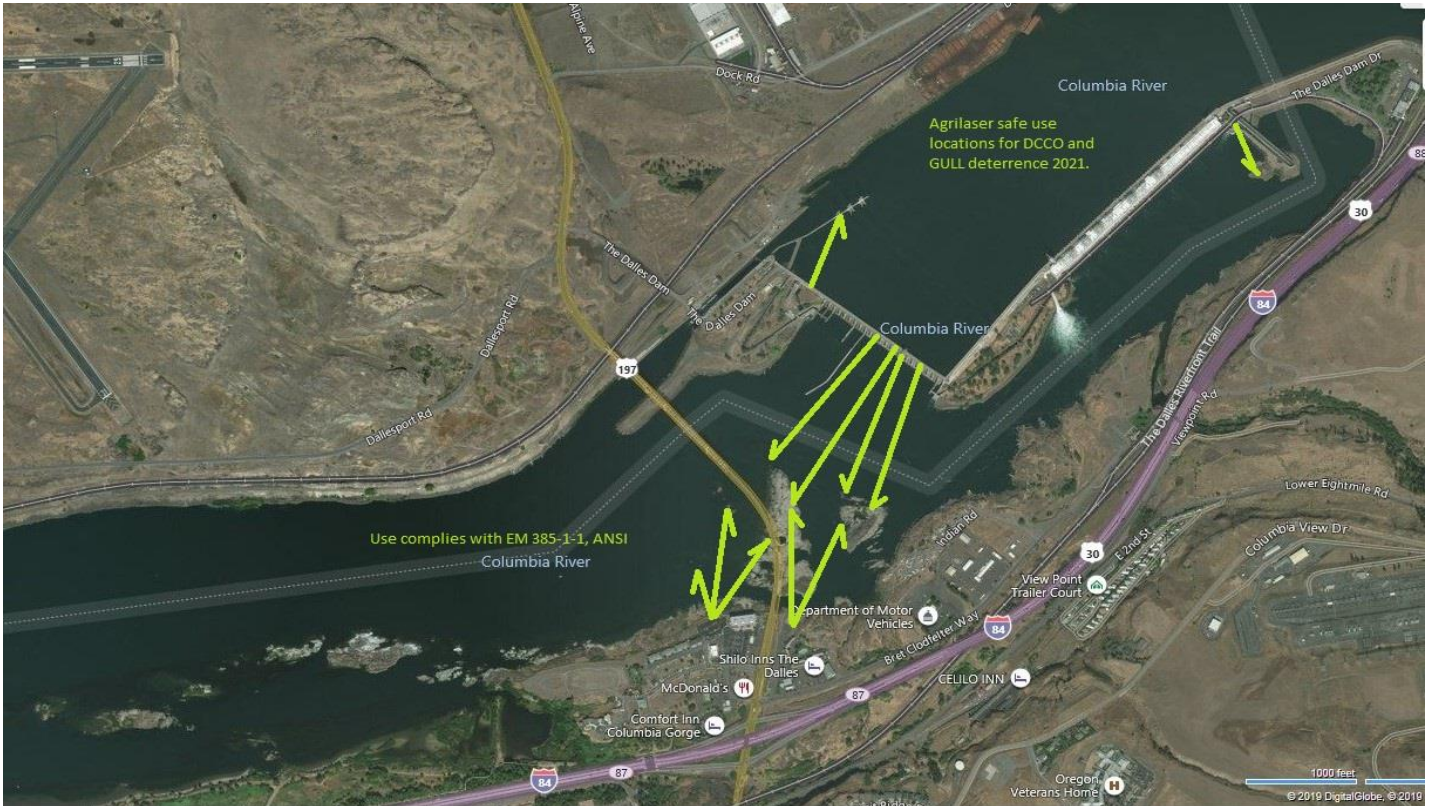
USGS temperature link- [September](#)
4 Peaks fish count ending 10/31
Supporting lamprey improvements PDT. Two of 4 exit weir modified with lamprey orifice, other 2 next winter.
Planning for install of junction pool lamprey trap and entrance weir modifications via contractor this winter.
ODFW conducting monthly fishway inspections.
PTAGIS fishladder data collection at count stations continues
zebra/quagga mussel samples collected on 8/26/2022

Operations

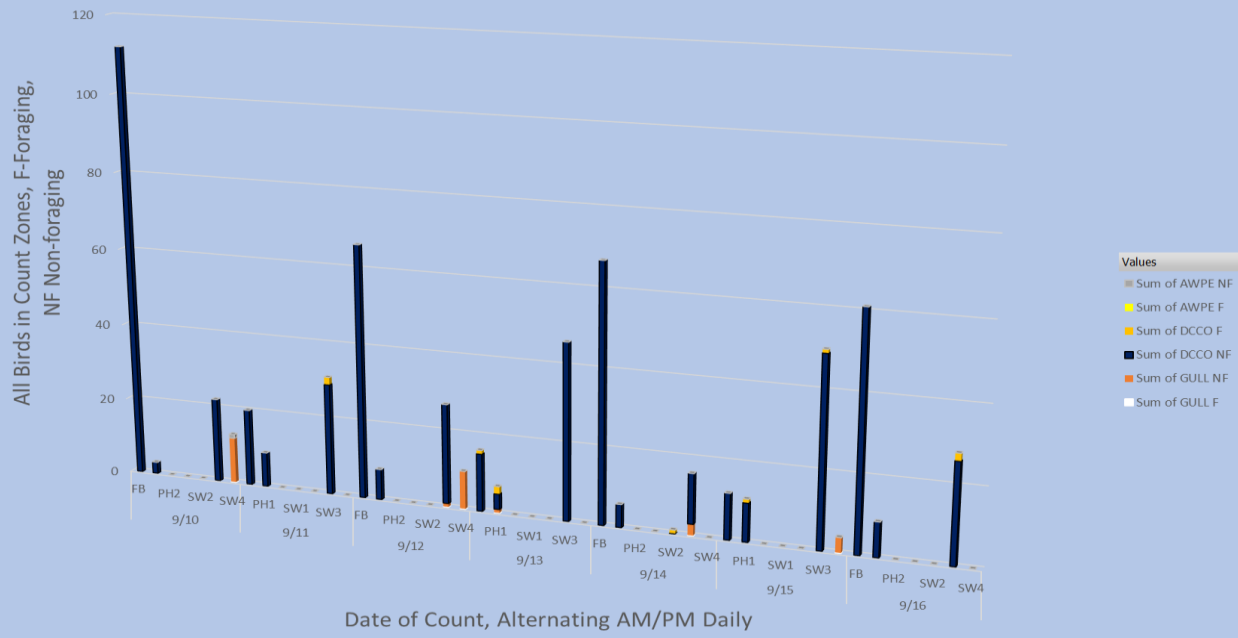
Sluice gates 1-1, 1-2, 1-3, 8-1, 8-3, 18-2 in accordance with fish passage criteria

Approved by: Ron Twiner, Operation Project Manager, The Dalles Dam

Bird Count Zones, Avian Lines and Laser Deterrent Sites

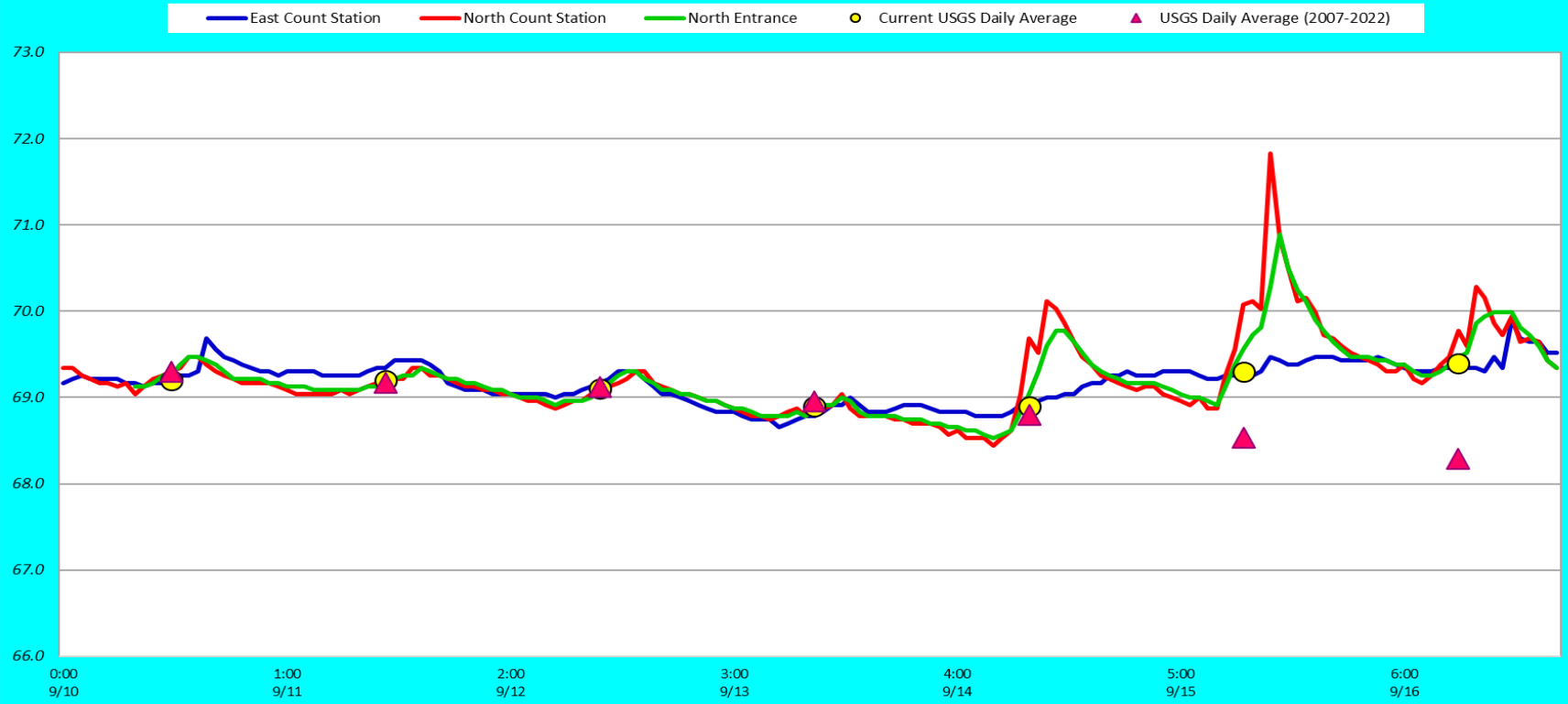


Avian Count at TDA, 9/10 to 9/16/2023



+ -

Adult Fish Ladders-River Temperatures

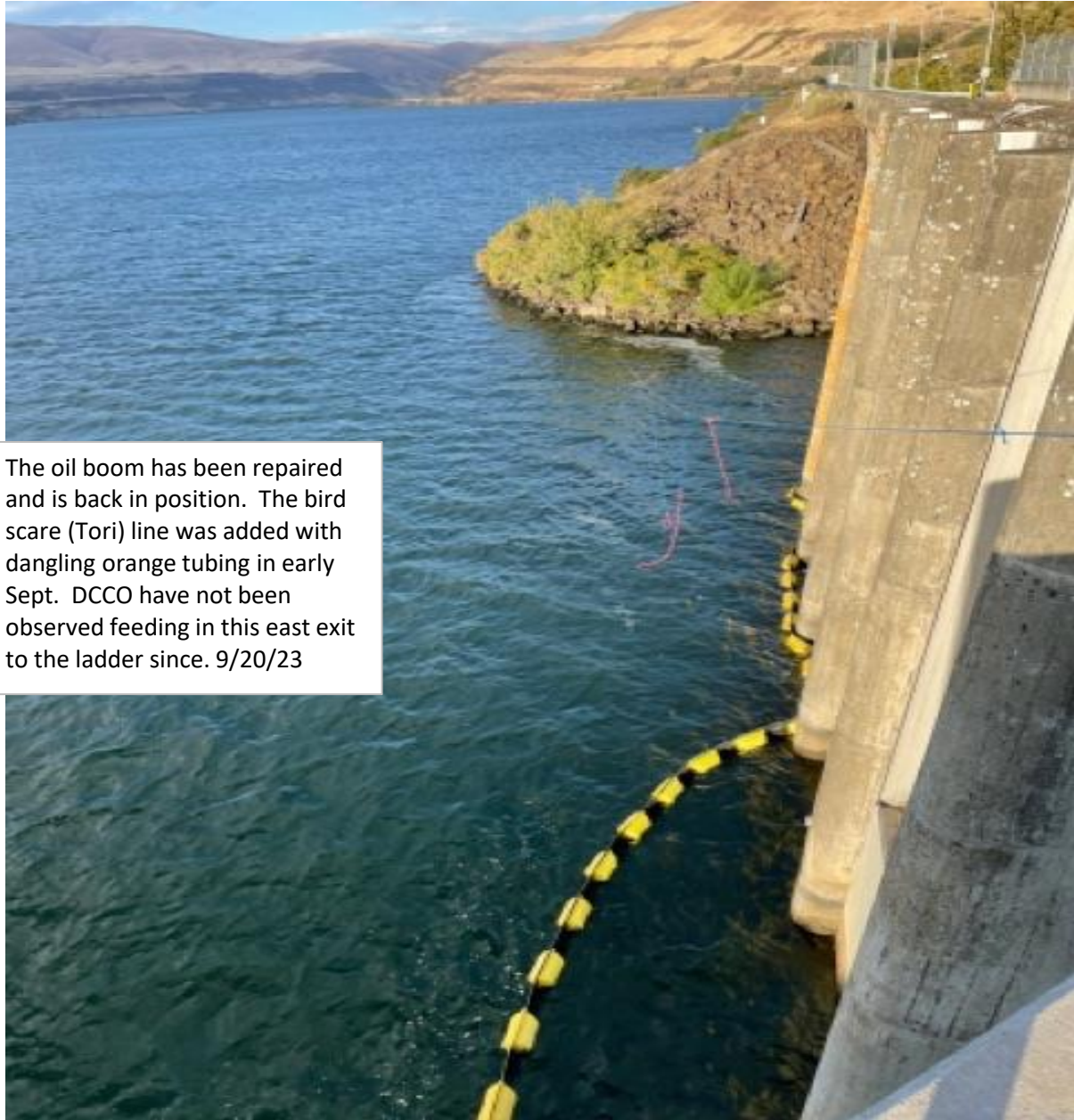


Secchi:		USGS
5.0	Sun	69.1
5.0	Mon	69.1
5.0	Tue	69.0
6.0	Wed	68.7
6.0	Thurs	68.9
6.0	Fri	69.2
6.0	Sat	69.3
5.6	AVG	69.0

Reporting week data

Date:	North Ladder		East Ladder											
			East Entrance					West Entrance			South Entrance			
	Differential	N1 Depth	Differential	E1 Depth	E2 Depth	E3 Depth	JP 6	Differential	W1	W2	W3	Differential	S1	S2
9/10	1.4	9.5	1.5	2.1	11.4	11.4	10.9	1.4	8.7	8.7	-2.2	1.4	8.3	8.4
	1.3	9.6	1.6	2.0	11.3	11.2	10.8	1.5	8.3	8.2	-2.1	1.4	8.3	8.4
9/11	1.2	9.5	1.7	1.1	11.1	11.1	9.9	1.6	7.6	7.6	-2.7	1.4	8.3	8.3
	1.2	9.4	1.5	2.8	11.0	11.1	9.9	1.5	8.1	8.2	-2.9	1.5	8.2	8.1
9/12	1.3	9.5	1.5	2.9	11.1	11.2	10.0	1.5	8.1	8.2	-2.8	1.5	8.0	8.0
	1.3	9.5	1.4	3.6	11.3	11.3	10.6	1.4	8.4	8.5	-2.3	1.4	8.6	8.4
9/13	1.6	9.2	1.6	3.2	10.7	10.7	10.2	1.5	8.0	8.1	-2.7	1.4	8.0	8.2
	1.3	9.4	1.4	3.6	11.2	11.2	10.7	1.3	8.9	8.8	-2.2	1.3	8.6	8.5
9/14	1.3	9.5	1.5	3.5	10.8	10.8	10.5	1.5	8.3	8.3	-2.3	1.4	8.1	8.3
	1.4	9.5	1.4	4.1	11.3	11.4	11.1	1.4	8.8	8.7	-1.9	1.3	8.9	8.5
9/15	1.2	9.6	1.6	2.8	10.4	10.5	9.9	1.7	7.7	7.7	-2.9	1.5	7.7	8.1
	1.5	9.3	1.4	3.2	11.0	11.1	10.3	1.3	9.0	8.9	-2.6	1.3	8.9	8.6
9/16	1.4	9.4	1.7	3.2	10.4	10.5	10.3	1.4	8.5	8.4	-2.1	1.4	8.5	8.3
	1.5	9.3	1.7	3.1	10.2	10.4	10.2	1.5	8.3	8.2	-2.3	1.5	8.3	8.3
AVG:	1.4	9.4	1.5	2.9	10.9	11.0	10.4	1.5	8.3	8.3	-2.4	1.4	8.3	8.3

Fishways inspected twice daily



The oil boom has been repaired and is back in position. The bird scare (Tori) line was added with dangling orange tubing in early Sept. DCCO have not been observed feeding in this east exit to the ladder since. 9/20/23