

# The Dalles Dam Fishway Status Report

9/14/23

Inspection Period 09/03-09/09, 2023

## THE DALLES DAM



US Army Corps  
of Engineers  
Portland District

The Dalles Project-Fisheries  
P.O. Box 564  
The Dalles, OR 97058-9998  
Phone: 541-506-3800

The Dalles Dam	Inspections OOC	Criteria Limit	Total Number of Inspections: 14		Temperature: 69.2 °F
			Comments:		Weekly Ave. Secchi: 5.0

### NORTH FISHWAY

Exit differential	0	≤ 0.5'			
Count station differential	0	≤ 0.3'			
Weir crest depth	0	1.0' ± 0.1'			
Entrance weir N1	0	depth (≥ 8')	Average for the week	9.4	
Entrance Differential	0	1.0' - 2.0'	Average for the week	1.3	
N2		Closed			
PUD Intake differential	0	≤ 0.5'			

### EAST FISHWAY

Exit differential	0	≤ 0.5'			
Removable weirs 154-157	0	Per forebay			
Weir 158-159 differential	0	1.1' ± 0.1'			
Count station differential	0	≤ 0.3'			
153 Weir crest depth	0	1' ± 0.1'	1.0' per FPP.		
Junction pool weir JP6	0	> 7.0'	Weekly average	10.4	
East entrance differential	0	1.0' - 2.0'	Weekly average	1.5	
Entrance weir E1	0	No criteria	Weekly average	2.1	
Entrance weir E2	0	depth (≥ 8')	Weekly average	11.3	
Entrance weir E3	0	depth (≥ 8')	Weekly average	11.3	
Collection channel velocity	0	1.5 - 4 fps	3.21 east entrance 8/5/23		
Transportation channel velocity	0	1.5 - 4 fps	3.99 fps 8/4/23		
North channel velocity	0	1.5 - 4 fps	2.77 fps 7/15/23		
South entrance	0	1.5 - 4 fps	5.02 fps 8/5/23		
West entrance differential	0	1.0' - 2.0'	Weekly average	1.5	grating dive repair
Entrance weir W1	0	depth (≥ 8')	Weekly average	8.2	grating dive repair and modified operation due to damage
Entrance weir W2	0	depth (≥ 8')	Weekly average	8.3	grating dive repair and modified operation due to damage
Entrance weir W3	0	No criteria	Weekly average	-2.8	
South entrance differential	0	1.0' - 2.0'	Weekly average	1.4	grating dive repair
Entrance weir S1	0	depth (≥ 8')	Weekly average	8.4	grating dive repair
Entrance weir S2	0	depth (≥ 8')	Weekly average	8.4	grating dive repair

### JUVENILE BYPASS

Sluiceway operation	0	Units 1, 8, 18	1-8-18 gates open.		
Turbine trashrack drawdown	0	<1.5', biwklly	8/27/2023 All MUs and FUs in criteria.		
Spill volume/pattern	0	1 to 22	1-8 bays in operation daily		
Turbine Unit Priority	0	per FPP			
Gatewells	0	Weekly	8/27/2023 .		

## Current Outages

MU19 & MU20 FOOS 10/07/2018 1205 – 10/31/2025 1700 T10 ACETYLENE  
-MU12 OOS 04/12/2021 0001 – 9/22/2023 ANNUAL  
-MU4 OOS 04/17/2023 0630 – 9/28/2023 1700, ANNUAL

## Maintenance

Working on contract for north ladder vegetation removal in Feb  
Planning spill gates 9 and 10 cable and gearbox swap. Possible this fall/winter.  
Spillway assessment; Spillgates 1- 9 rehab 2034. Spillway crane replace first priority. Reviewing gate operation frequency.  
Diffuser grating damage discovered at east entrance. Dive repair completed 8/22. Reduced flow 5k cfs to 4 k cfs rest of season.

## Predators

Northern Pikeminnow Management Program 28 for the week, 2290 YTD. Also removing bass and walleye, 114 YTD.  
Planning removal of bass/walleye/catfish from all dewaterings for gut sample analysis. Working on permit.  
Trial of Tori lines installed at east, south and west entrance  
Pacific Lamprey translocation season ended 9/6 w/ a grand total of 1501 fish captured/translocated

## Research/Construction/Contractors

USGS temperature link-  
4 Peaks conduction fish c [August °F](#)  
Supporting lamprey improvements PDT. Two of 4 exit weir modified with lamprey orifice, other 2 next winter.  
Planning for install of junction pool lamprey trap and entrance weir modifications via contractor this winter.  
ODFW conducting monthly fishway inspections.  
PTAGIS fishladder data collection at count stations continues  
lamprey translocation #'s as of 8/27-at 1447 YTD  
zebra/quagga mussel samples collected on 8/26/2023

## Operations

Sluice gates 1-1, 1-2, 1-3, 8-1, 8-3, 18-2 in accordance with fish passage criteria

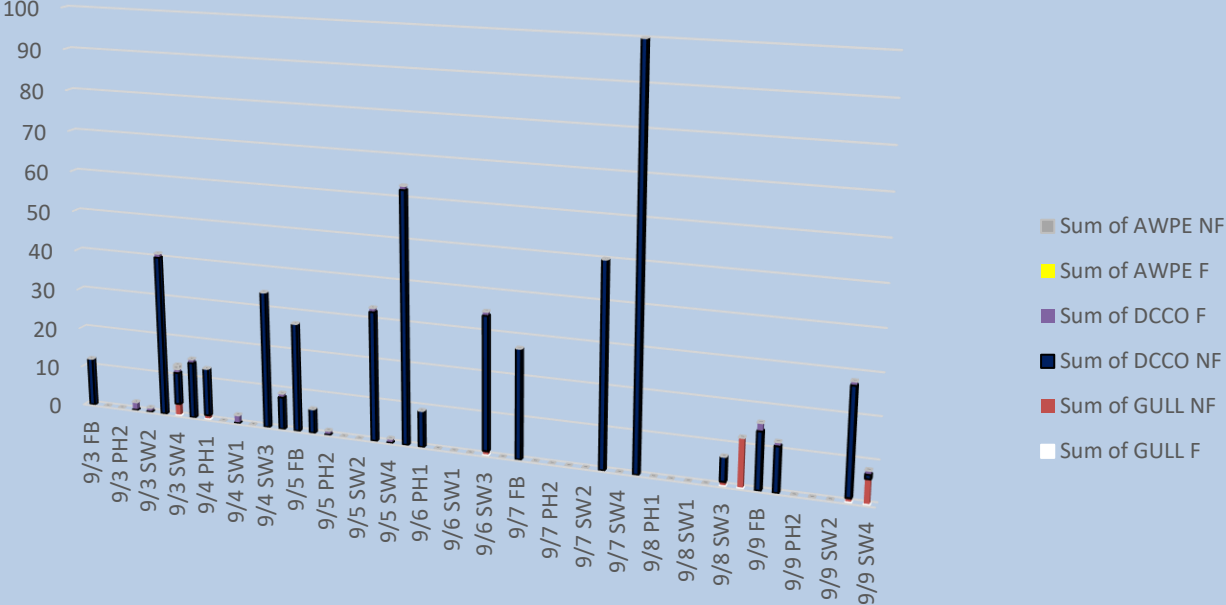
Approved by: Ron Twiner, Operation Project Manager, The Dalles Dam

# Bird Count Zones, Avian Lines and Laser Deterrent Sites



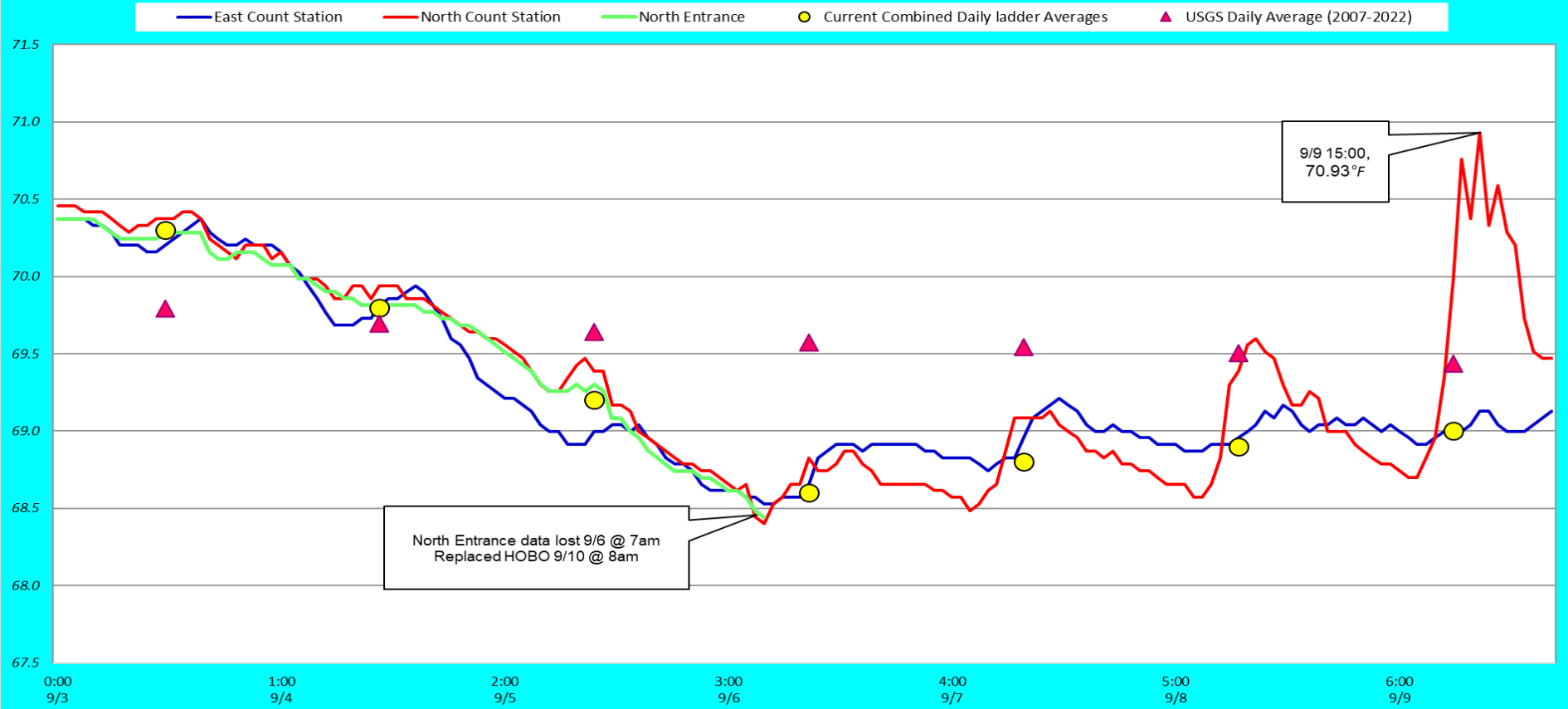
### Avian Count at TDA, 9/3 to 9/9/2023

All Birds in Count Zones, F-Foraging, NF Non-foraging



Typical cormorant numbers, but keeping away from entrances. Very few gulls - Yay!

### Fish Ladders-River Temperatures



Secchi:		USGS
5.0	Sun	70.3
5.0	Mon	69.8
5.0	Tue	69.2
5.0	Wed	68.6
5.0	Thurs	68.8
5.0	Fri	68.9
5.0	Sat	69.0
5.0	AVG	69.2

## Reporting week data

Date:	North Ladder		East Ladder											
	Differential	N1 Depth	East Entrance					West Entrance				South Entrance		
			Differential	E1 Depth	E2 Depth	E3 Depth	JP 6	Differential	W1	W2	W3	Differential	S1	S2
9/3	1.2	9.5	1.5	3.3	10.9	10.8	10.3	1.5	8.2	8.1	-3.1	1.3	8.6	8.5
	1.3	9.4	1.3	4.0	11.6	11.5	11.0	1.3	8.7	8.8	-2.4	1.3	8.6	8.6
9/4	1.3	9.4	1.6	1.2	11.0	11.0	10.2	1.6	8.0	8.0	-3.0	1.4	8.2	8.0
	1.3	9.3	1.4	1.2	11.7	11.7	10.2	1.6	8.0	8.0	-3.0	1.4	8.2	8.2
9/5	1.3	9.4	1.5	0.8	11.3	11.3	9.8	1.6	7.8	7.9	-3.2	1.4	8.3	8.5
	1.3	9.5	1.4	1.2	11.7	11.7	10.2	1.5	8.1	8.1	-3.1	1.3	8.8	8.7
9/6	1.6	9.2	1.5	1.0	11.5	11.5	10.0	1.5	8.1	8.1	-3.1	1.5	8.2	8.0
	1.3	9.3	1.4	1.6	11.6	11.6	10.6	1.4	8.5	8.5	-2.7	1.4	8.6	8.6
9/7	1.3	9.4	1.5	2.3	11.2	11.2	10.2	1.5	8.3	8.3	-2.9	1.3	8.4	8.4
	1.3	9.5	1.4	2.5	11.4	11.4	10.4	1.3	8.6	8.6	-2.6	1.3	8.7	8.7
9/8	1.4	9.4	1.5	2.4	11.2	11.1	10.4	1.4	8.2	8.2	-2.7	1.5	8.1	8.1
	1.3	9.4	1.5	2.5	11.3	11.2	10.5	1.4	8.3	8.4	-2.6	1.4	8.2	8.4
9/9	1.4	9.4	1.5	2.7	11.2	11.2	10.6	1.5	8.4	8.4	-2.5	1.5	8.2	8.2
	1.4	9.5	1.6	2.6	11.1	11.1	10.6	1.5	8.3	8.3	-2.6	1.4	8.4	8.4
<b>AVG:</b>	<b>1.3</b>	<b>9.4</b>	<b>1.5</b>	<b>2.1</b>	<b>11.3</b>	<b>11.3</b>	<b>10.4</b>	<b>1.5</b>	<b>8.2</b>	<b>8.3</b>	<b>-2.8</b>	<b>1.4</b>	<b>8.4</b>	<b>8.4</b>

*Fishways inspected twice daily*