

## Current Outages

-MU19 & MU20 FOOS 10/07/2018 1205 – 10/27/2023 1700 T10 ACETYLENE  
-MU12 OOS 04/12/2021 0001 – 9/22/2023 ANNUAL  
-MU4 OOS 04/17/2023 0630 – 11/28/2023 1700, ANNUAL  
-MU15 OOS 05/22/2023 0630 – ??, ANNUAL  
-MU16 OOS 05/22/2023 0630 – 06/29/2023 1700, 6 YR O/H  
-MU11 OOS 06/05/2023 0630 – 06/15/2023 1700, ANNUAL

## Maintenance

Plan in place for fish unit intake trashrack rake in preparation for potential debris issues. Monitoring fish unit differential. Calibrations at fishways entrances are all within criteria 6/13/2023  
Planning spill gates 9 and 10 cable and gearbox swap. Resealing bulkheads.  
Spillway assessment; Spillgates 1- 9 rehab 2034. Spillway crane replace first priority. Reviewing gate operation frequency.  
Weir 157 being operated normally. All movable weirs working normally.

## Predators

60+ pelicans foraging spillway tailrace eddy line off spillwall and in SW4  
50-20 foraging gulls in tailwater/FB/PH1 count zones. Cormorants foraging aggressively and persisting on BPA towers with ~32 nests.  
Planning removal of bass/walleye/catfish from all dewaterings for gut sample analysis. Waiting on WDFW permit process.  
Falconry abatement at 10 weeks, Chasing gulls from PH1/2 and forebay to some success.

## Research/Construction/Contractors

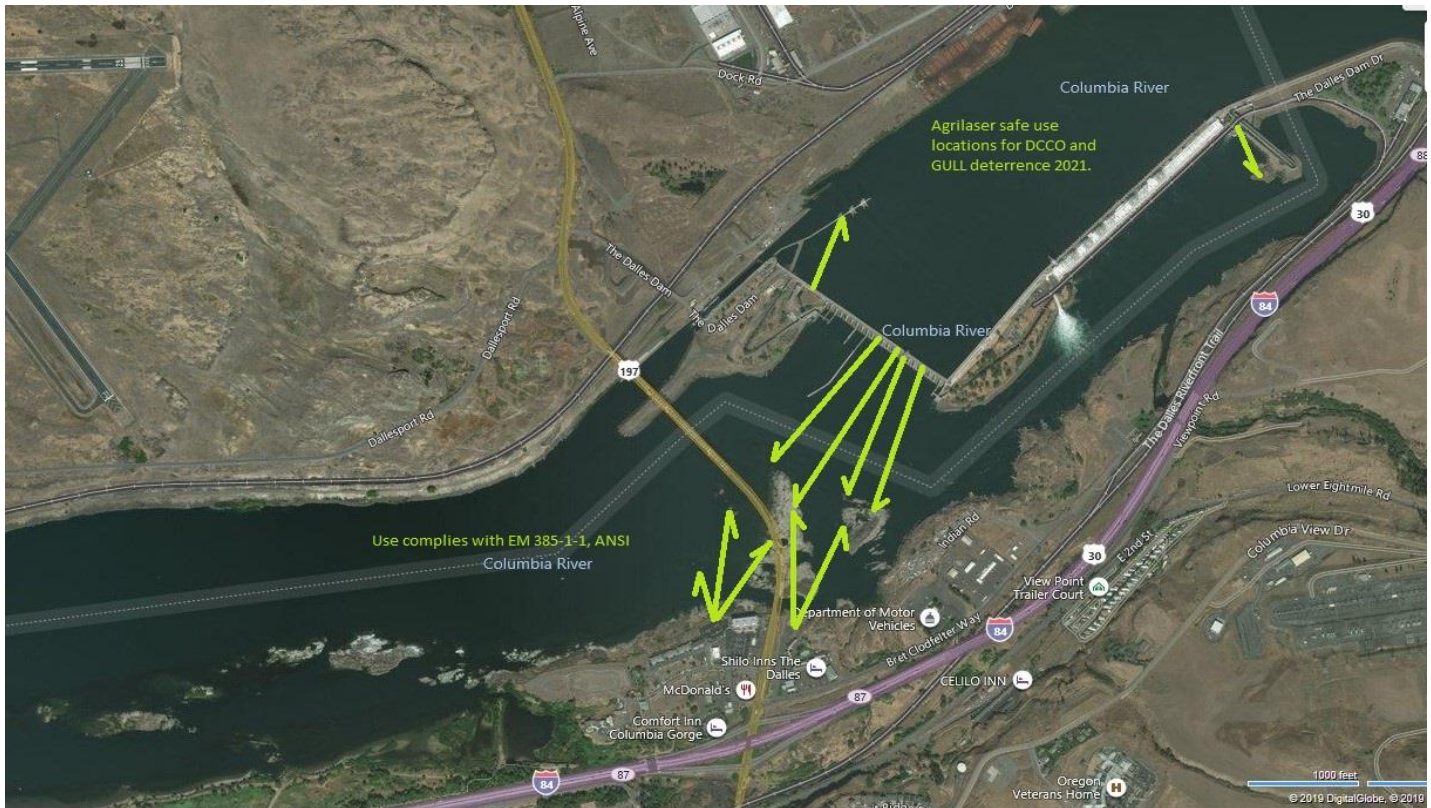
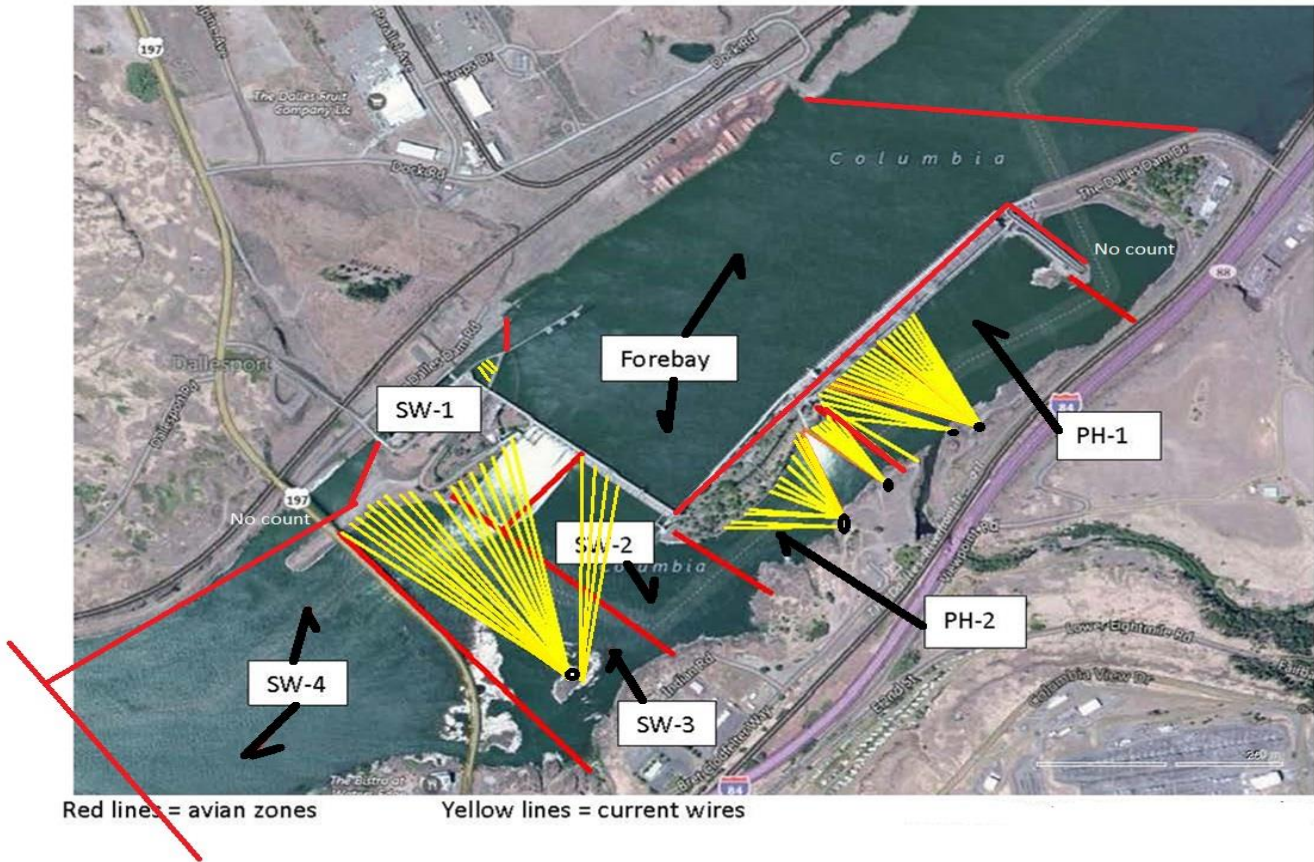
WDFW dam anglers making periodic visits. Catch rates continue low with high turbid flows.  
USGS river temperatures link <https://pweb.crohms.org/tmt/documents/ops/temp/202305.lcol.html>  
4 Peaks fish counters 16hr/7 day/wk started Apr 1.  
Supporting lamprey improvements PDT. Two of 4 exit weir modified with lamprey orifice, other 2 next winter.  
ODFW conducting monthly fishway inspections.  
PTAGIS fishladder data collection at count stations continues

## Operations

Fish units off for 1 hour during the one night last week to relieve excess differential on intake. Differential returned to normal.  
Sluice gates 1-1, 1-2, 1-3, 8-1, 8-3, 18-2 open  
Gatewells contain small numbers of sub yearlings, no visible mortality.

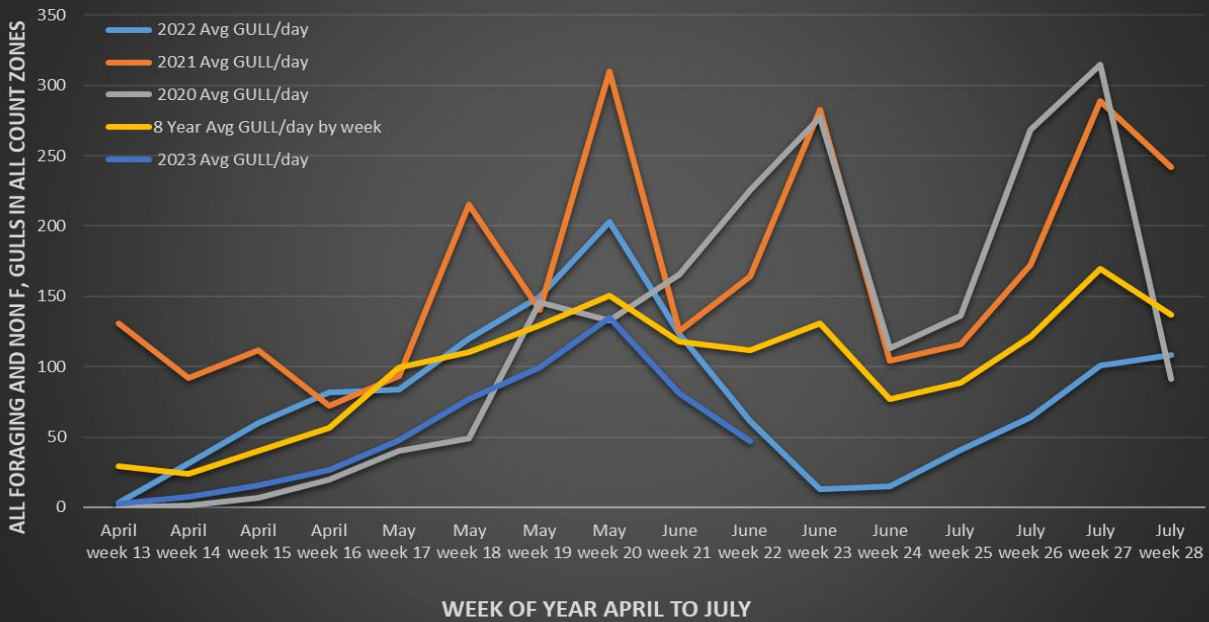
Approved by: Ron Twiner, Operation Project Manager, The Dalles Dam

# Bird Count Zones, Avian Lines and Laser Deterrent Sites

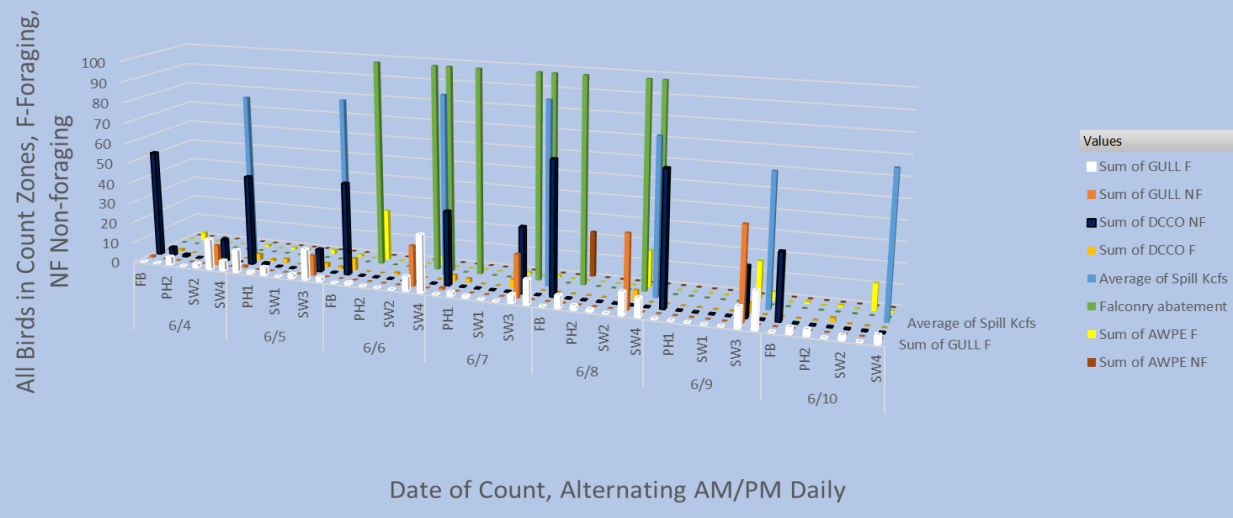




### TDA Daily Mean # of GULLS by Week, April to July 2020 and 2021, 2022, 2023 Compared to Previous 8 years Daily Mean.



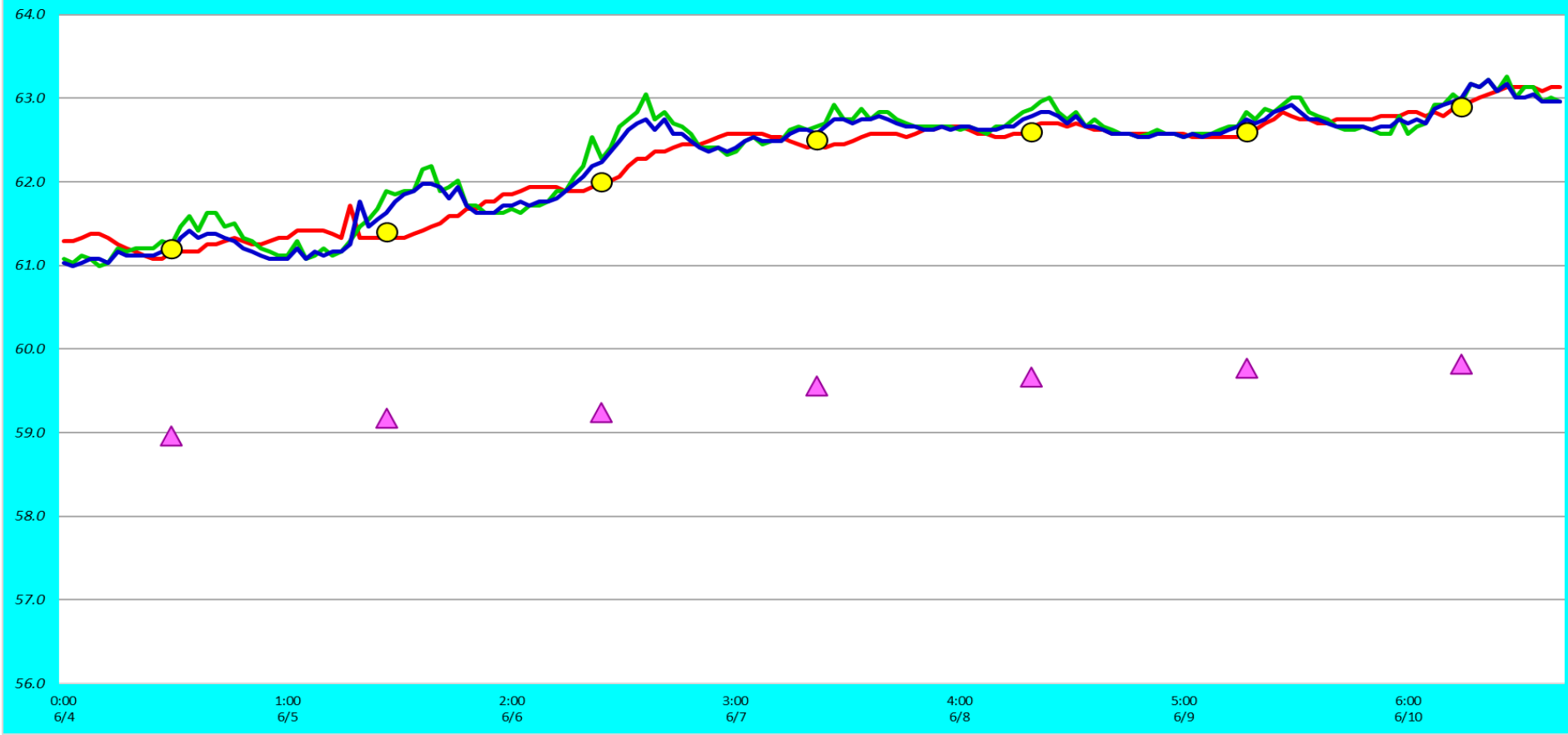
### Avian Count at TDA, 6/4 to 6/10/2023



Gulls declining, cormorants feeding aggressively, pelicans feeding and increasing daily with arrival of shad.

### Adult Fish Ladders-River Temperatures

— East Count Station    — North Count Station    — North Entrance    ● Current USGS Daily Average    ▲ USGS Daily Average (2007-2022)



Secchi:		USGS F°
4.0	Sun	61.2
4.0	Mon	61.4
4.0	Tue	62.0
4.0	Wed	62.5
4.0	Thurs	62.6
4.0	Fri	62.6
4.0	Sat	62.9
4.0	AVG	62.2

## Reporting week data

Date:	North Ladder		East Ladder											
			East Entrance					West Entrance			South Entrance			
	Differential	N1 Depth	Differential	E1 Depth	E2 Depth	E3 Depth	JP 6	Differential	W1	W2	W3	Differential	S1	S2
6/4	1.3	10.9	1.6	9.0	11.5	13.0	13.0	1.6	9.8	9.8	-1.6	1.5	10.3	9.6
	0.9	10.9	1.5	9.0	12.0	13.0	13.0	1.7	9.8	9.8	-1.5	1.4	10.4	10.2
6/5	1.3	11.0	1.4	9.3	12.3	13.4	13.4	1.5	10.1	10.1	-1.2	1.3	10.3	10.0
	1.0	10.8	1.5	9.3	12.2	13.3	13.3	1.5	10.4	10.4	-0.9	1.4	10.1	9.6
6/6	1.3	11.0	1.4	9.3	11.8	13.3	13.3	1.4	10.6	10.6	-1.2	1.4	10.6	10.1
	1.3	10.9	1.5	9.3	11.8	13.3	13.3	1.4	10.5	10.5	-1.3	1.4	10.3	9.6
6/7	1.3	10.9	1.4	9.0	12.0	13.0	13.0	1.5	10.4	10.4	-1.6	1.5	10.6	9.6
	1.3	10.9	1.4	9.3	12.3	13.3	13.3	1.5	10.7	10.7	-1.4	1.5	10.3	9.2
6/8	1.3	11.1	1.4	8.9	11.9	12.9	12.9	1.5	10.5	10.5	-1.5	1.3	10.3	10.4
	1.3	11.0	1.4	9.5	12.5	13.5	13.5	1.2	11.0	11.1	-0.8	1.4	10.1	10.0
6/9	1.3	10.8	1.6	8.8	11.5	12.7	12.7	1.6	10.1	10.2	-1.6	1.5	10.4	10.0
	1.3	10.8	1.4	9.2	12.0	13.2	13.2	1.4	10.6	10.6	-1.2	1.4	10.2	9.8
6/10	1.3	10.6	1.7	69.9	67.0	11.0	12.0	1.7	9.8	9.9	-2.5	1.4	10.6	9.8
	1.3	10.6	1.6	70.0	66.7	11.3	12.0	1.7	9.8	9.8	-2.5	1.4	10.7	9.9
<b>AVG:</b>	<b>1.3</b>	<b>10.9</b>	<b>1.5</b>	<b>17.8</b>	<b>19.8</b>	<b>12.9</b>	<b>13.0</b>	<b>1.5</b>	<b>10.3</b>	<b>10.3</b>	<b>-1.5</b>	<b>1.4</b>	<b>10.4</b>	<b>9.8</b>

*Fishways inspected twice daily*

# The Dalles Dam Fishway Status Report

6/11/23

Inspection Period 06/4-06/10, 2023

## THE DALLES DAM



US Army Corps  
of Engineers  
Portland District

The Dalles Project-Fisheries  
P.O. Box 564  
The Dalles, OR 97058-9998  
Phone: 541-506-3800

The Dalles Dam	Inspections OOC	Criteria Limit	Total Number of Inspections: 14		Temperature: 62.2 °F
			Comments: flow decrease. Turbidity improving.		Weekly Ave. Secchi: 4.0

### NORTH FISHWAY

Exit differential	0	≤ 0.5'			
Count station differential	0	≤ 0.3'			
Weir crest depth	0	1.0' ± 0.1'			
Entrance weir N1	0	depth (≥ 8')	Average for the week	10.9	
Entrance Differential	1	1.0' - 2.0'	Average for the week	1.3	PLC misreading during high spill
N2		Closed			
PUD Intake differential	0	≤ 0.5'			

### EAST FISHWAY

Exit differential	0	≤ 0.5'			
Removable weirs 154-157	0	Per forebay			
Weir 158-159 differential	0	1.1' ± 0.1'			
Count station differential	0	≤ 0.3'	Increased weir top flow 1.3' due to shad. raked pickets frequently.		
153 Weir crest depth	0	1' ± 0.1'			
Junction pool weir JP6	0	> 7.0'	Weekly average	13.0	
East entrance differential	0	1.0' - 2.0'	Weekly average	1.5	
Entrance weir E1	0	No criteria	Weekly average	17.8	
Entrance weir E2	0	depth (≥ 8')	Weekly average	19.8	
Entrance weir E3	0	depth (≥ 8')	Weekly average	19.8	
Collection channel velocity	0	1.5 - 4 fps	1.94 fps 5/24/23		
Transportation channel velocity	0	1.5 - 4 fps	3.84 fps 6/4/23		
North channel velocity	0	1.5 - 4 fps	2.44 fps 6/5/23		
East entrance	0	1.5 - 4 fps	2.72 fps 5/24/23		
West entrance differential	0	1.0' - 2.0'	Weekly average	1.5	
Entrance weir W1	0	depth (≥ 8')	Weekly average	10.3	
Entrance weir W2	0	depth (≥ 8')	Weekly average	10.3	
Entrance weir W3	0	No criteria	Weekly average	-1.5	
South entrance differential	0	1.0' - 2.0'	Weekly average	1.4	
Entrance weir S1	0	depth (≥ 8')	Weekly average	10.4	
Entrance weir S2	0	depth (≥ 8')	Weekly average	9.8	

### JUVENILE BYPASS

Sluiceway operation	0	Units 1, 8, 18	1-8-18 gates open. Significant floating trash in east sluiceway, large sturgeon mortality.		
Turbine trashrack drawdown	0	<1.5', biwkly	6/12/2023 All in criteria.		
Spill volume/pattern	0	1 to 22	1-8 bays in operation daily		
Turbine Unit Priority	0	per FPP			
Gatewells	0	Weekly	Many fish in gatewells, mostly sub yearling. 1 mortality, MU15-1 sub yearlings. little trash east end.		



Scanning for PIT tags on Lewis island west of TD.