

# The Dalles Dam Fishway Status Report

5/7/23

Inspection Period 05/1-05/6, 2023

## THE DALLES DAM



US Army Corps  
of Engineers  
Portland District

The Dalles Project-Fisheries  
P.O. Box 564  
The Dalles, OR 97058-9998  
Phone: 541-506-3800

<b>The Dalles Dam</b>	<b>Inspections OOC</b>	<b>Criteria Limit</b>	<b>Total Number of Inspections:</b> 14		<b>Temperature:</b> 53.1 °F
			<b>Comments:</b> flow-turbidity increase		<b>Weekly Ave. Secchi:</b> 3.5

### NORTH FISHWAY

Exit differential	0	≤ 0.5'			
Count station differential	0	≤ 0.3'			
Weir crest depth	0	1.0' ± 0.1'			
Entrance weir N1	0	depth (≥ 8')	Average for the week	11.1	
Entrance Differential	0	1.0' - 2.0'	Average for the week	1.4	
N2		Closed			
PUD Intake differential	0	≤ 0.5'			

### EAST FISHWAY

Exit differential	0	≤ 0.5'			
Removable weirs 154-157	0	Per forebay			
Weir 158-159 differential	0	1.1' ± 0.1'			
Count station differential	0	≤ 0.3'			
153 Weir crest depth	0	1.3' ± 0.1'			
Junction pool weir JP6	0	> 7.0'	Weekly average	15.4	
East entrance differential	0	1.0' - 2.0'	Weekly average	1.4	
Entrance weir E1	0	No criteria	Weekly average	6.0	
Entrance weir E2	0	depth (≥ 8')	Weekly average	12.2	
Entrance weir E3	0	depth (≥ 8')	Weekly average	12.2	
Collection channel velocity	0	1.5 - 4 fps			
Transportation channel velocity	0	1.5 - 4 fps	3.3 fps 3/20/23		
North channel velocity	0	1.5 - 4 fps	2.41 fps 3/11/23		
South channel velocity	0	1.5 - 4 fps	4.72 fps 4/23/23	Entrance	
West entrance differential	0	1.0' - 2.0'	Weekly average	1.4	
Entrance weir W1	0	depth (≥ 8')	Weekly average	10.5	
Entrance weir W2	0	depth (≥ 8')	Weekly average	10.5	
Entrance weir W3	0	No criteria	Weekly average	1.9	
South entrance differential	0	1.0' - 2.0'	Weekly average	1.4	
Entrance weir S1	0	depth (≥ 8')	Weekly average	10.9	
Entrance weir S2	0	depth (≥ 8')	Weekly average	10.2	

### JUVENILE BYPASS

Sluiceway operation	0	Units 1, 8, 18	1-8-18 gates open.		
Turbine trashrack drawdown	0	<1.5', biwklly	Nothing to report.		
Spill volume/pattern	0	1 to 22	1-8 bays in operation daily		
Turbine Unit Priority	0	per FPP			
Gatewells	0	Weekly	No fish in gatewells to report. No trash.		

### Current Outages

-MU19 & MU20 FOOS 10/07/2018 1205 – 10/27/2023 1700 T10 ACETYLENE  
-MU12 OOS 04/12/2021 0001 – 9/22/2023 ANNUAL  
MU4 OOS 04/17/2023 0630 – 05/04/2023 1700, ANNUAL

### Maintenance

Plan in place for fish unit intake trashrack rake in preparation for potential debris issues.  
Calibrations at fishways entrances are all within criteria 5/5/2023  
Planning spill gates 9 and 10 cable and gearbox swap. Resealing bulkheads.  
Spillway assessment; Spillgates 1- 9 rehab 2034. Spillway crane replace first priority. Reviewing gate operation frequency.

### Predators

10-20 foraging gulls in tailwater/FB count zones. Cormorants persisting on BPA towers. ~55+ individuals hazed off daily.  
Planning removal of bass/walleye/catfish from all dewaterings for gut sample analysis. Waiting on WDFW permit process.  
Falconry abatement at 4 weeks, focus now on gulls in tailwater, however not achieving the results we were hoping.

### Research/Construction/Contractors

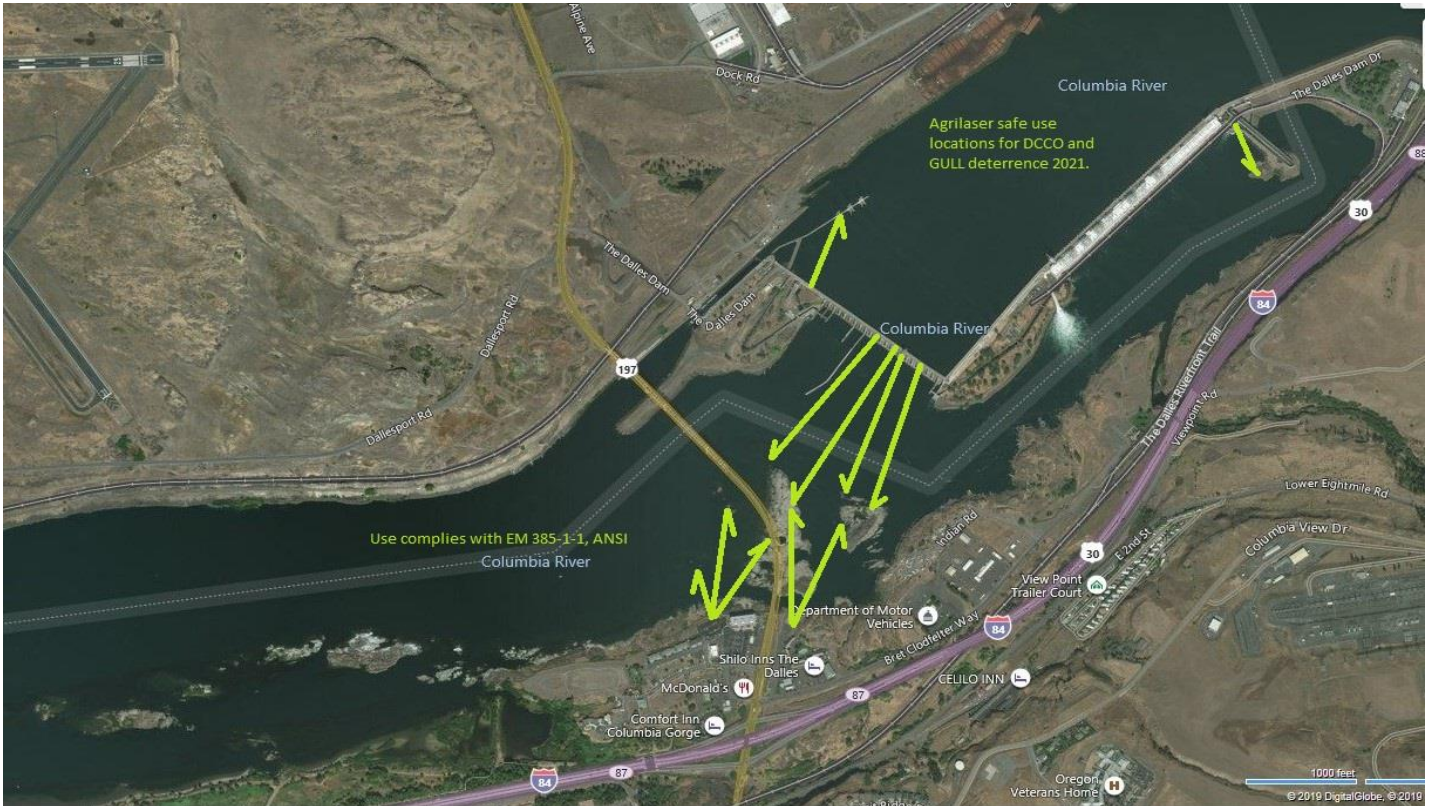
USGS river temperatures link  
4 Peaks fish counters started Apr 1.  
Supporting lamprey improvements PDT. Two of 4 exit weir modified with lamprey orifice, other 2 next winter.  
ODFW conducting monthly fishway inspections.  
PTAGIS fishladder data collection at count stations continues

### Operations

Sluice gates 1-1, 1-2, 1-3, 8-1, 8-3, 18-2 open  
Gatewells contain small numbers of chinook yearlings, no mortality.

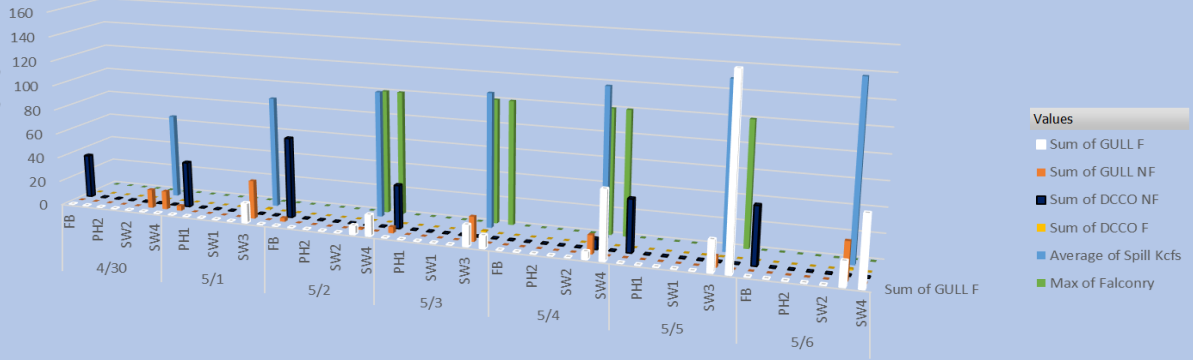
Approved by: Bryan Hert for Ron Twiner, Operation Project Manager, The Dalles Dam

# Bird Count Zones, Avian Lines and Laser Deterrent Sites



### Avian Count at TDA, 4/30 to 5/6/2023

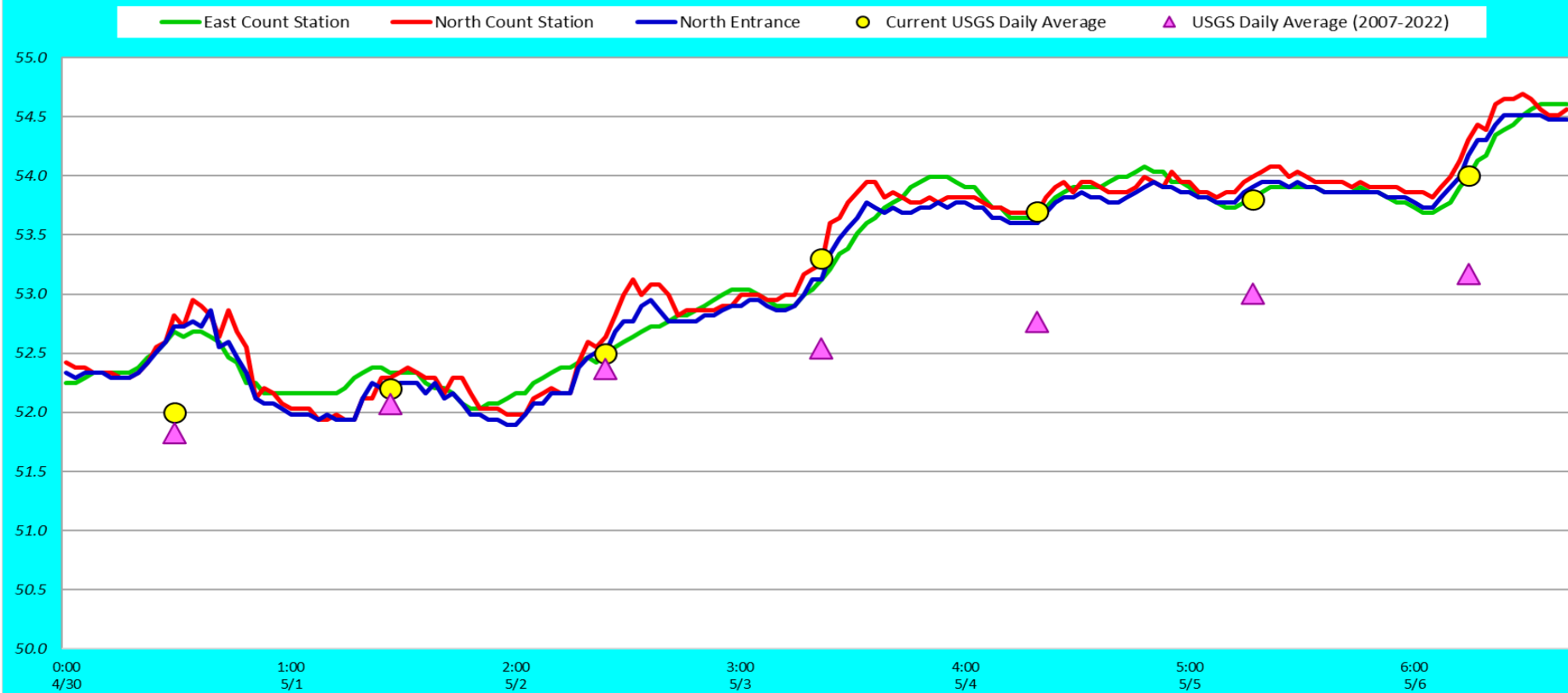
All Birds in Count Zones, F-Foraging,  
NF Non-foraging



Date of Count, Alternating AM/PM Daily



### Adult Fish Ladders-River Temperatures



Secchi:		USGS F°
4.0	Sun	52.0
4.0	Mon	52.2
4.0	Tue	52.5
3.0	Wed	53.3
3.5	Thurs	53.7
3.0	Fri	53.8
3.0	Sat	54.0
3.5	AVG	53.1

## Reporting week data

Date:	North Ladder		East Ladder											
			East Entrance					West Entrance			South Entrance			
	Differential	N1 Depth	Differential	E1 Depth	E2 Depth	E3 Depth	JP 6	Differential	W1	W2	W3	Differential	S1	S2
4/30	1.3	10.5	1.5	5.9	12.3	12.2	11.9	1.6	9.9	9.9	-1.5	1.6	9.9	9.2
	1.4	10.5	1.5	6.1	12.5	12.4	12.1	1.4	10.3	10.3	-1.1	1.3	10.6	9.8
5/1	1.4	10.4	1.5	6.3	12.7	12.6	12.2	1.5	10.4	10.4	-1.0	1.4	10.5	9.6
	1.4	10.7	1.4	6.3	13.3	13.3	13.3	1.4	10.4	10.4	0.0	1.3	10.7	9.8
5/2	1.5	10.7	1.3	6.9	13.8	13.7	14.4	1.4	10.6	10.6	1.0	1.3	10.6	9.6
	1.4	11.0	1.4	6.9	13.5	13.5	14.4	1.3	10.6	10.7	1.1	1.4	10.4	9.1
5/3	1.4	11.0	1.3	7.9	12.2	11.8	15.9	1.5	10.8	10.8	2.1	1.4	11.4	10.0
	1.4	11.3	1.4	5.0	12.0	12.0	16.0	1.3	11.0	11.0	2.4	1.4	10.4	9.1
5/4	1.4	11.4	1.3	6.3	12.1	11.9	17.2	1.3	10.8	10.8	3.5	1.5	11.3	11.2
	1.3	11.5	1.7	5.8	11.2	11.1	16.8	1.5	9.8	9.9	3.2	1.4	11.5	11.0
5/5	1.4	11.6	1.4	6.8	11.3	11.1	17.8	1.3	10.6	10.6	4.2	1.5	11.1	11.1
	1.4	11.5	1.6	5.9	11.1	11.1	16.9	1.6	9.8	9.8	3.4	1.4	11.0	11.0
5/6	1.4	11.4	1.4	6.9	11.1	11.1	17.9	1.4	10.6	10.6	4.1	1.4	11.1	11.1
	1.5	11.3	1.5	1.5	11.6	11.5	18.5	1.4	11.0	11.1	4.8	1.4	11.5	11.4
<b>AVG:</b>	<b>1.4</b>	<b>11.1</b>	<b>1.4</b>	<b>6.0</b>	<b>12.2</b>	<b>12.1</b>	<b>15.4</b>	<b>1.4</b>	<b>10.5</b>	<b>10.5</b>	<b>1.9</b>	<b>1.4</b>	<b>10.9</b>	<b>10.2</b>

*Fishways inspected twice daily*