

The Dalles Dam Fishway Status Report

2/30/2023

Inspection Period 04/23-04/29, 2023

THE DALLES DAM



US Army Corps
of Engineers
Portland District

The Dalles Project-Fisheries
P.O. Box 564
The Dalles, OR 97058-9998
Phone: 541-506-3800

The Dalles Dam	Inspections OOC	Criteria Limit	Total Number of Inspections: 14		Temperature: 50.5 °F
			Comments: Both fish units flow in east ladder		Weekly Ave. Secchi: 4.0

NORTH FISHWAY

Exit differential	0	≤ 0.5'			
Count station differential	0	≤ 0.3'			
Weir crest depth	0	1.0' ± 0.1'			
Entrance weir N1	0	depth (≥ 8')	Average for the week	10.4	
Entrance Differential	0	1.0' - 2.0'	Average for the week	1.3	
N2		Closed			
PUD Intake differential	0	≤ 0.5'			

EAST FISHWAY

Exit differential	0	≤ 0.5'			
Removable weirs 154-157	0	Per forebay			
Weir 158-159 differential	0	1.1' ± 0.1'			
Count station differential	0	≤ 0.3'			
153 Weir crest depth	0	1.3' ± 0.1'			
Junction pool weir JP6	0	> 7.0'	Weekly average	11.0	
East entrance differential	0	1.0' - 2.0'	Weekly average	1.5	
Entrance weir E1	0	No criteria	Weekly average	4.7	
Entrance weir E2	0	depth (≥ 8')	Weekly average	12.4	
Entrance weir E3	0	depth (≥ 8')	Weekly average	12.4	
Collection channel velocity	0	1.5 - 4 fps			
Transportation channel velocity	0	1.5 - 4 fps	3.3 fps 3/20/23		
North channel velocity	0	1.5 - 4 fps	2.41 fps 3/11/23		
South channel velocity	1	1.5 - 4 fps	4.72 fps 4/23/23	Entrance	
West entrance differential	0	1.0' - 2.0'	Weekly average	1.5	
Entrance weir W1	0	depth (≥ 8')	Weekly average	10.1	
Entrance weir W2	0	depth (≥ 8')	Weekly average	10.1	
Entrance weir W3	0	No criteria	Weekly average	-2.3	
South entrance differential	0	1.0' - 2.0'	Weekly average	1.4	
Entrance weir S1	0	depth (≥ 8')	Weekly average	10.3	
Entrance weir S2	0	depth (≥ 8')	Weekly average	9.9	

JUVENILE BYPASS

Sluiceway operation	0	Units 1, 8, 18	1-8-18 gates open.		
Turbine trashrack drawdown	0	<1.5', biwklly	Nothing to report.		
Spill volume/pattern	0	1 to 22	1-8 bays in operation daily		
Turbine Unit Priority	0	per FPP			
Gatewells	0	Weekly	No fish in gatewells to report. No trash.		

Current Outages

-MU19 & MU20 FOOS 10/07/2018 1205 – 10/27/2023 1700 T10 ACETYLENE
-MU12 OOS 04/12/2021 0001 – 9/22/2023 ANNUAL
MU4 OOS 04/17/2023 0630 – 05/04/2023 1700, ANNUAL

Maintenance

Plan in place for fish unit intake trashrack rake in preparation for potential debris issues.

Planning spill gates 9 and 10 cable and gearbox swap. Resealing bulkheads.

Spillway assessment; Spillgates 1- 9 rehab 2034. Spillway crane replace first priority. Reviewing gate operation frequency.

Predators

10-20 foraging gulls in tailwater/FB count zones. Cormorants persisting on BPA towers. ~55+ individuals hazed off daily.
Planning removal of bass/walleye/catfish from all dewaterings for gut sample analysis. Waiting on WDFW permit process.
Falconry abatement at 4 weeks, focus now on gulls in tailwater. One falcon died in navlock valve pit.

Research/Construction/Contractors

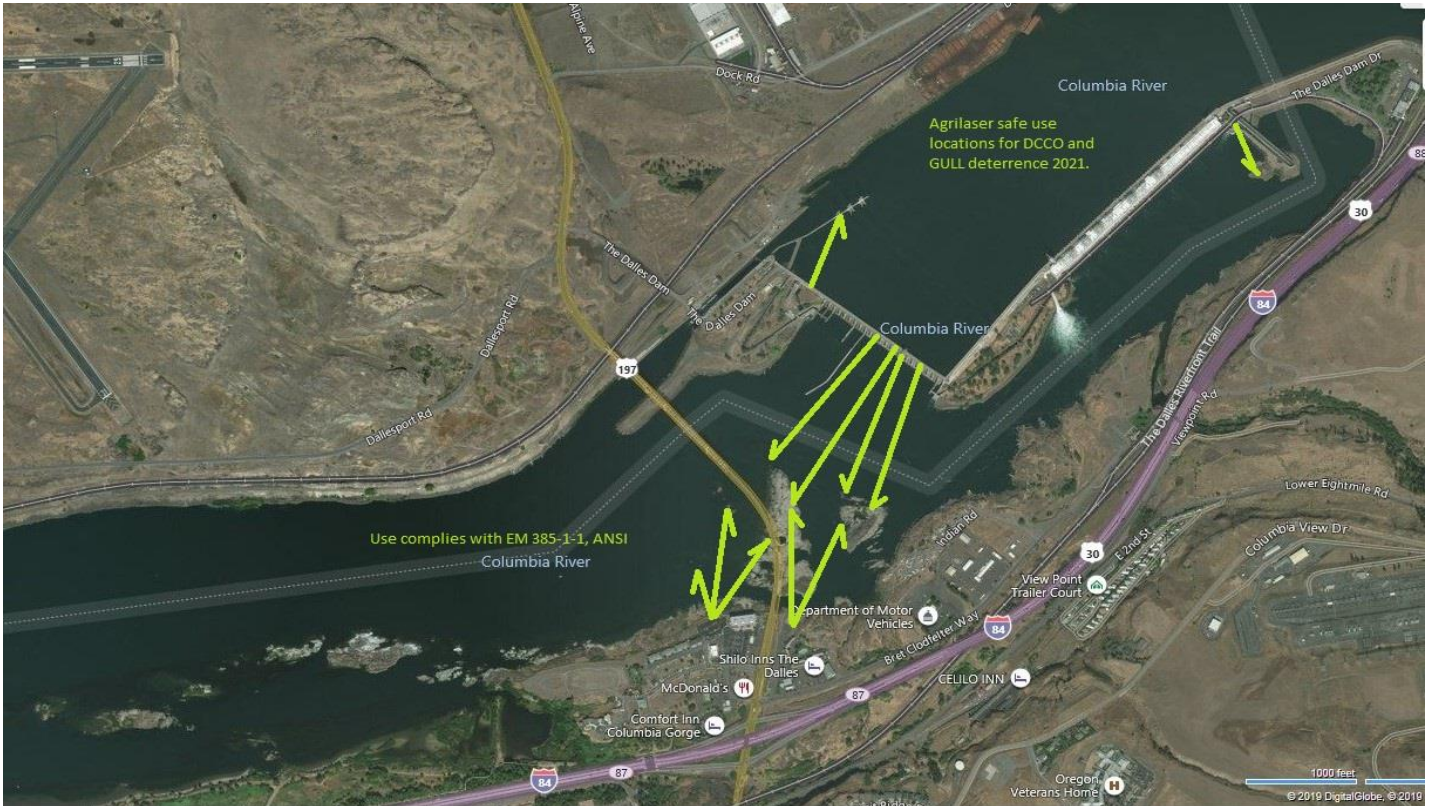
USGS river temperatures link
4 Peaks fish counters started Apr 1.
Supporting lamprey improvements PDT. Two of 4 exit weir modified with lamprey orifice, other 2 next winter.
ODFW conducting monthly fishway inspections.
PTAGIS fishladder data collection at count stations continues

Operations

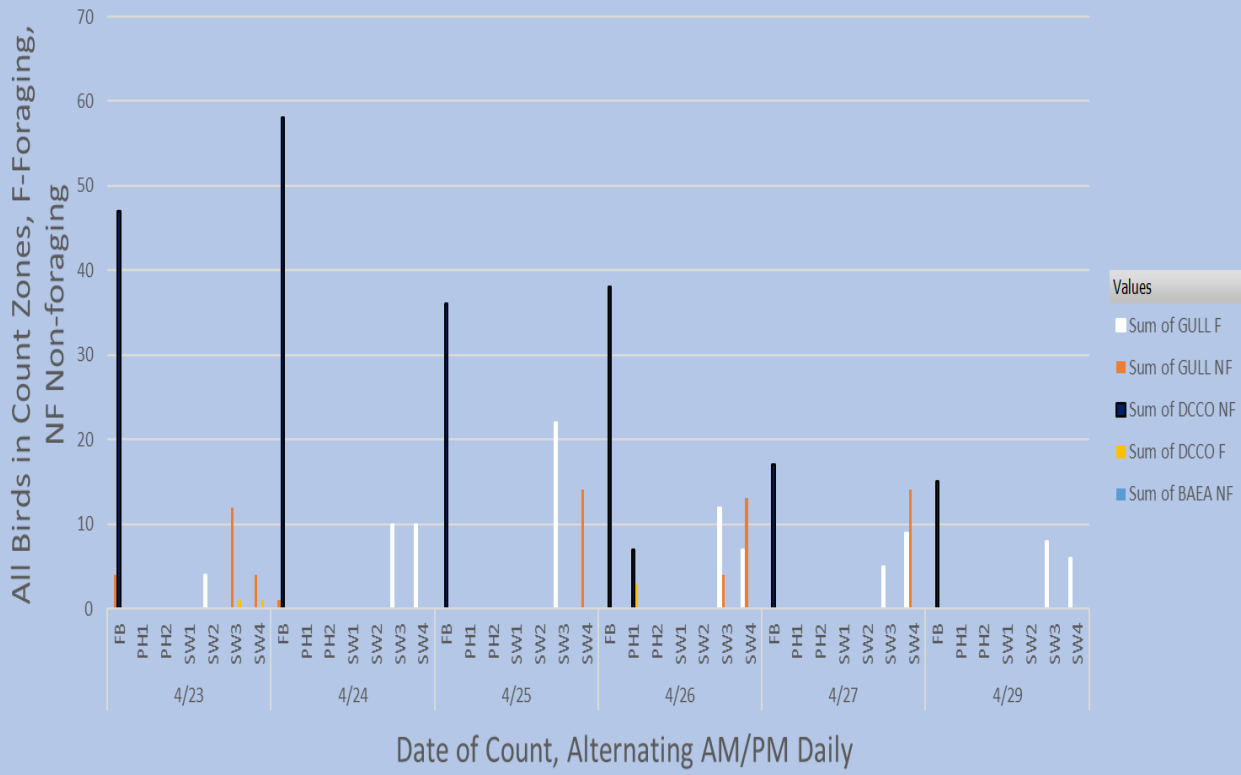
Sluice gates 1-1, 1-2, 1-3, 8-1, 8-3, 18-1 open

Approved by: Bryan Hert for Ron Twiner, Operation Project Manager, The Dalles Dam

Bird Count Zones, Avian Lines and Laser Deterrent Sites

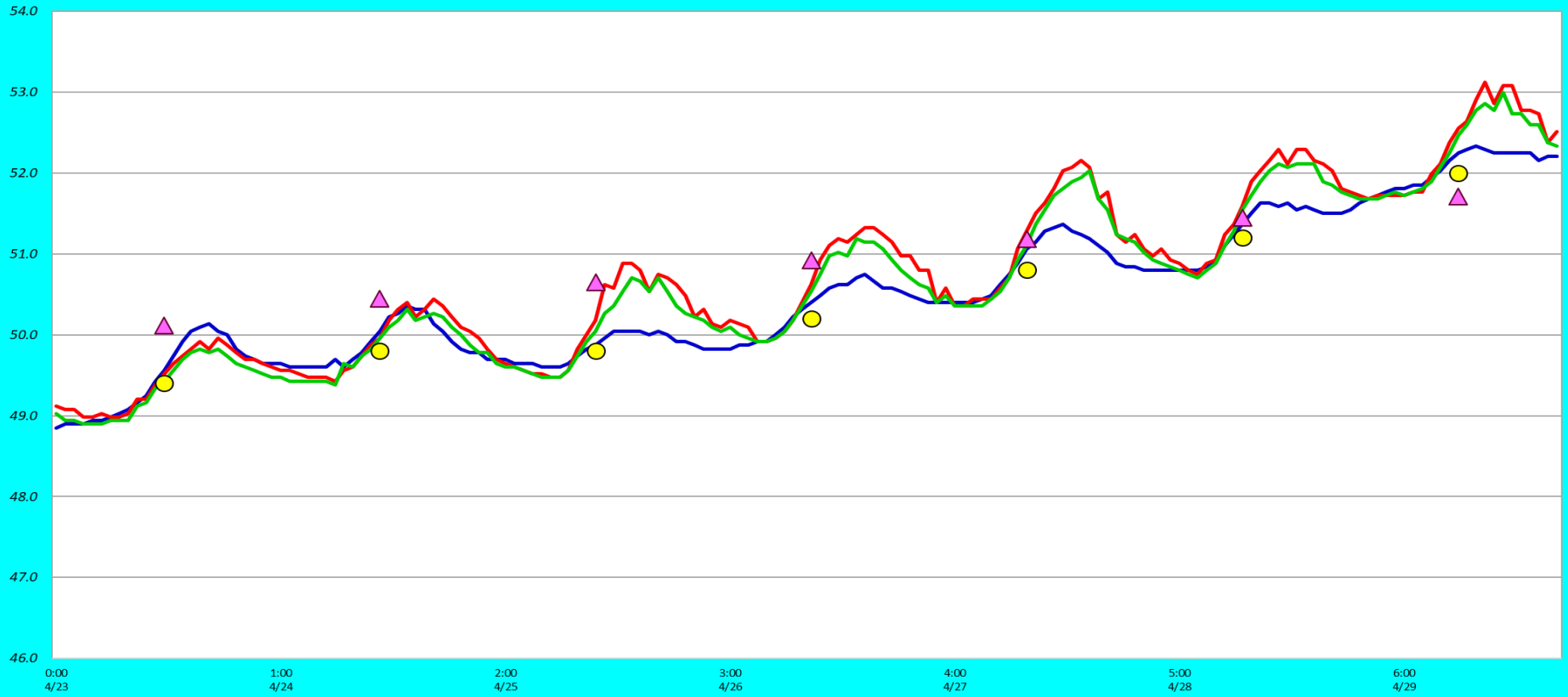


Avian Count at TDA, 4/23 to 4/29/2023



Adult Fish Ladders-River Temperatures

— East Count Station — North Count Station — North Entrance ● Current USGS Daily Average ▲ USGS Daily Average (2007-2022)



Secchi:		USGS F°
4.0	Sun	49.4
4.0	Mon	49.8
4.0	Tue	49.8
4.0	Wed	50.2
4.0	Thurs	50.8
4.0	Fri	51.2
4.0	Sat	52.0
4.0	AVG	50.5

Reporting week data

Date:	North Ladder		East Ladder											
			East Entrance					West Entrance			South Entrance			
	Differential	N1 Depth	Differential	E1 Depth	E2 Depth	E3 Depth	JP 6	Differential	W1	W2	W3	Differential	S1	S2
4/23	1.3	10.5	1.7	3.0	12.4	12.4	11.0	1.5	10.1	10.1	-2.1	1.4	10.1	9.8
	1.3	10.4	1.6	2.8	12.5	12.5	10.8	1.4	9.9	9.9	-2.2	1.4	10.2	9.8
4/24	1.3	10.4	1.4	5.2	12.6	12.6	11.2	1.5	10.1	10.1	-2.0	1.4	10.4	10.0
	1.3	10.4	1.6	5.3	12.7	12.7	11.3	2.4	9.2	9.2	-2.9	1.4	10.4	10.0
4/25	1.3	10.4	1.5	5.1	12.6	12.6	11.1	1.5	10.3	10.3	-2.1	1.4	10.4	10.1
	1.3	10.5	1.5	4.9	12.4	12.7	10.9	1.5	10.1	10.1	-2.3	1.4	10.4	9.9
4/26	1.5	10.5	1.4	5.3	12.7	12.7	11.3	1.4	10.4	10.4	-2.0	1.3	10.4	10.1
	1.3	10.4	1.5	4.9	12.4	12.4	10.9	1.4	10.1	10.1	-2.3	1.3	10.5	9.8
4/27	1.3	10.5	1.5	5.0	12.5	12.4	11.0	1.5	10.2	10.1	-2.3	1.4	10.5	9.9
	1.3	10.5	1.4	5.1	12.6	12.5	11.1	1.5	10.2	10.1	-2.3	1.4	10.5	9.8
4/28	1.3	10.5	1.6	5.0	12.1	12.0	11.0	1.6	9.9	9.9	-2.3	1.4	10.5	9.8
	1.4	9.4	1.6	5.0	12.0	12.0	11.0	1.5	10.2	10.3	-2.3	1.4	10.6	9.9
4/29	1.4	10.4	1.6	4.7	11.9	11.9	10.7	1.5	9.9	10.0	-2.6	1.4	9.5	9.8
	1.4	10.4	1.6	5.0	12.2	12.2	11.0	1.4	10.3	10.3	-2.2	1.6	9.4	9.6
AVG:	1.3	10.4	1.5	4.7	12.4	12.4	11.0	1.5	10.1	10.1	-2.3	1.4	10.3	9.9

Fishways inspected twice daily



They're back....Anglers getting within 100' of east exit. Working with WDFW for possible solutions.



Pelican scoping out the east fishladder again. Worked in between trolling boats in front at east exit.