

# The Dalles Dam Fishway Status Report

3/5/23

Inspection Period 2/26-3/4, 2023

## THE DALLES DAM



US Army Corps  
of Engineers  
Portland District

The Dalles Project-Fisheries  
P.O. Box 564  
The Dalles, OR 97058-9998  
Phone: 541-506-3800

<b>The Dalles Dam</b>	<b>Inspections OOC</b>	<b>Criteria Limit</b>	<b>Total Number of Inspections:</b> 11		<b>Temperature:</b> 38.5 °F
			<b>Comments:</b> Both fish units flow in east ladder		<b>Weekly Ave. Secchi:</b> 5.0

### NORTH FISHWAY

Exit differential	0	≤ 0.5'			
Count station differential	0	≤ 0.3'			
Weir crest depth	0	1.0' ± 0.1'			
Entrance weir N1	0	depth (≥ 8')	Average for the week	9.0	
Entrance Differential	0	1.0' - 2.0'	Average for the week	1.3	
N2	0	Closed			
PUD Intake differential	0	≤ 0.5'			

### EAST FISHWAY

Exit differential	0	≤ 0.5'			
Removable weirs 154-157	0	Per forebay	Note; 155 weir hoist failed.		
Weir 158-159 differential	0	1.1' ± 0.1'			
Count station differential	0	≤ 0.3'			
153 Weir crest depth	0	1.3' ± 0.1'			
Junction pool weir JP6	0	> 7.0'	Weekly average	9.3	
East entrance differential	0	1.0' - 2.0'	Weekly average	1.5	
Entrance weir E1	0	No criteria	Weekly average	2.7	
Entrance weir E2	0	depth (≥ 8')	Weekly average	11.0	
Entrance weir E3	0	depth (≥ 8')	Weekly average	11.0	
Collection channel velocity	0	1.5 - 4 fps			
Transportation channel velocity	0	1.5 - 4 fps			
North channel velocity	0	1.5 - 4 fps			
South channel velocity	0	1.5 - 4 fps			
West entrance differential	0	1.0' - 2.0'	Weekly average	1.4	
Entrance weir W1	0	depth (≥ 8')	Weekly average	10.0	
Entrance weir W2	0	depth (≥ 8')	Weekly average	10.0	
Entrance weir W3	0	No criteria	Weekly average	-4.2	
South entrance differential	0	1.0' - 2.0'	Weekly average	1.5	
Entrance weir S1	0	depth (≥ 8')	Weekly average	9.6	
Entrance weir S2	0	depth (≥ 8')	Weekly average	9.5	

### JUVENILE BYPASS

Sluiceway operation	0	Units 1, 8, 18	Intakes MU1, 8, 16 and 18 open to recirculate. Endgate closed.		
Turbine trashrack drawdown	0	<1.5', biwklly	Nothing to report.		
Spill volume/pattern	0	1 to 22	NO SPILL.		
Turbine Unit Priority	0	per FPP			
Gatewells	0	Weekly	No fish seen.		

## Current Outages

MU19 & MU20 FOOS 10/07/2018 1205 – 10/27/2023 1700 T10 ACETYLENE  
MU12 OOS 04/12/2021 0001 – 9/22/2023 ANNUAL  
MU17 OOS 02/06/2023 0630 – 03/30/2023 1700, TURBINE BEARING  
MU17 & MU18 OOS 02/06/2023 0630 – 03/30/2023 1700 FOR STRAINER  
MU13 FOOS 02/14/2023 1112 - 03/01/2023 1700 LOW GOV OIL

## Maintenance

Planning to revive fish unit intake trashrack rake this spring  
East fishladder exit weir 155 repaired and operational.  
AWS intake trashrack debris management - PDT reviewing alternatives.  
Planning spill gates 9 and 10 cable and gearbox swap. Bkhead seal replacement needed.  
Spillway assessment; Spillgates 1- 9 rehab 2034. Includes spillbay 9 trunnion pin repair. Spillway crane first priority  
North count station brush requires adjustments  
East entrancel wiers adjusting limits  
Calibrations performed at east entrances and coordinated with engineering/TDE for modifications.

## Predators

Bald eagle numbers reduced. Small groups of CAGU foraging in SW4. DCCO numbers increasing.  
Planning removal of bass/walleye/catfish from all dewaterings for gut sample analysis. Presently in WDFW permit process.  
Working on Falconry abatement contract for start work in late March 2023.

## Research/Construction/Contractors

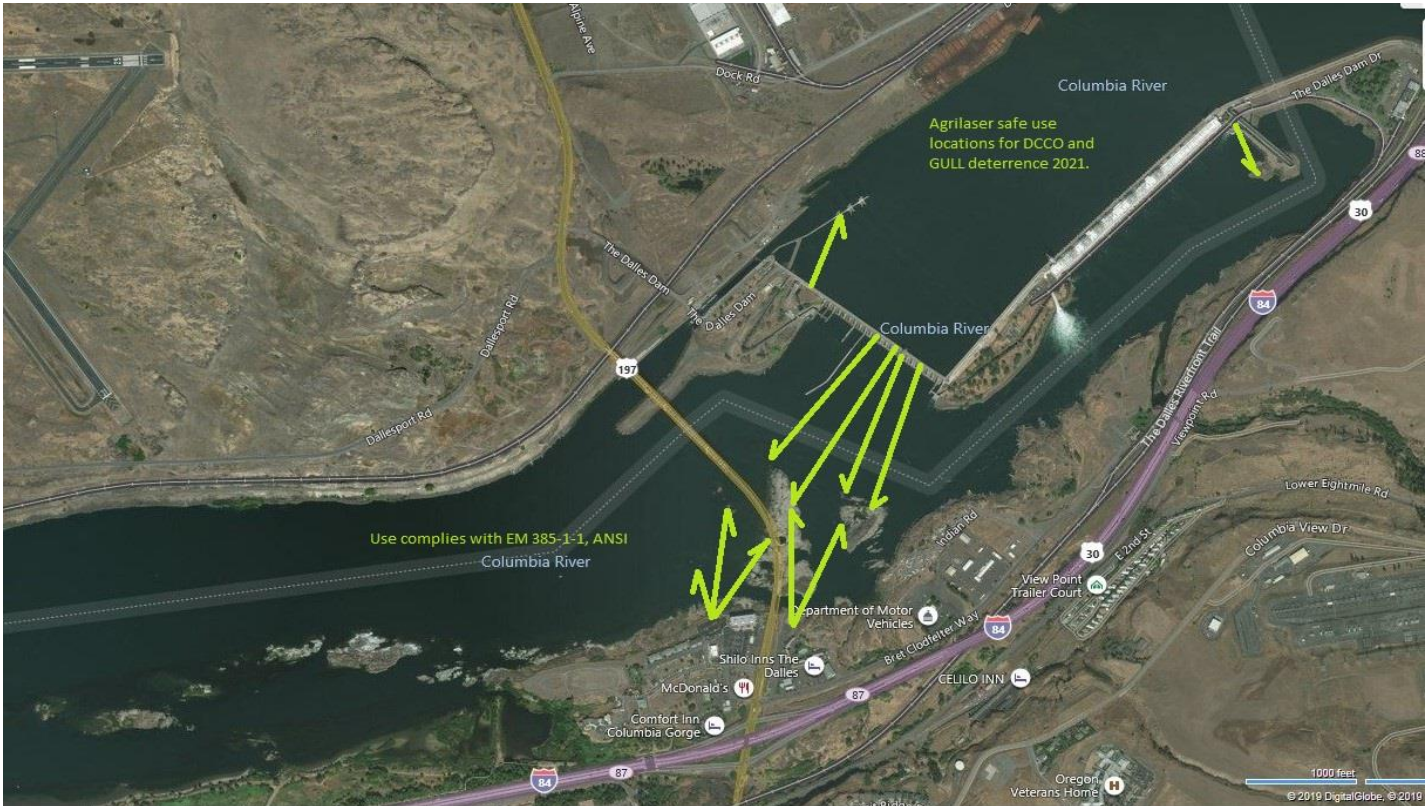
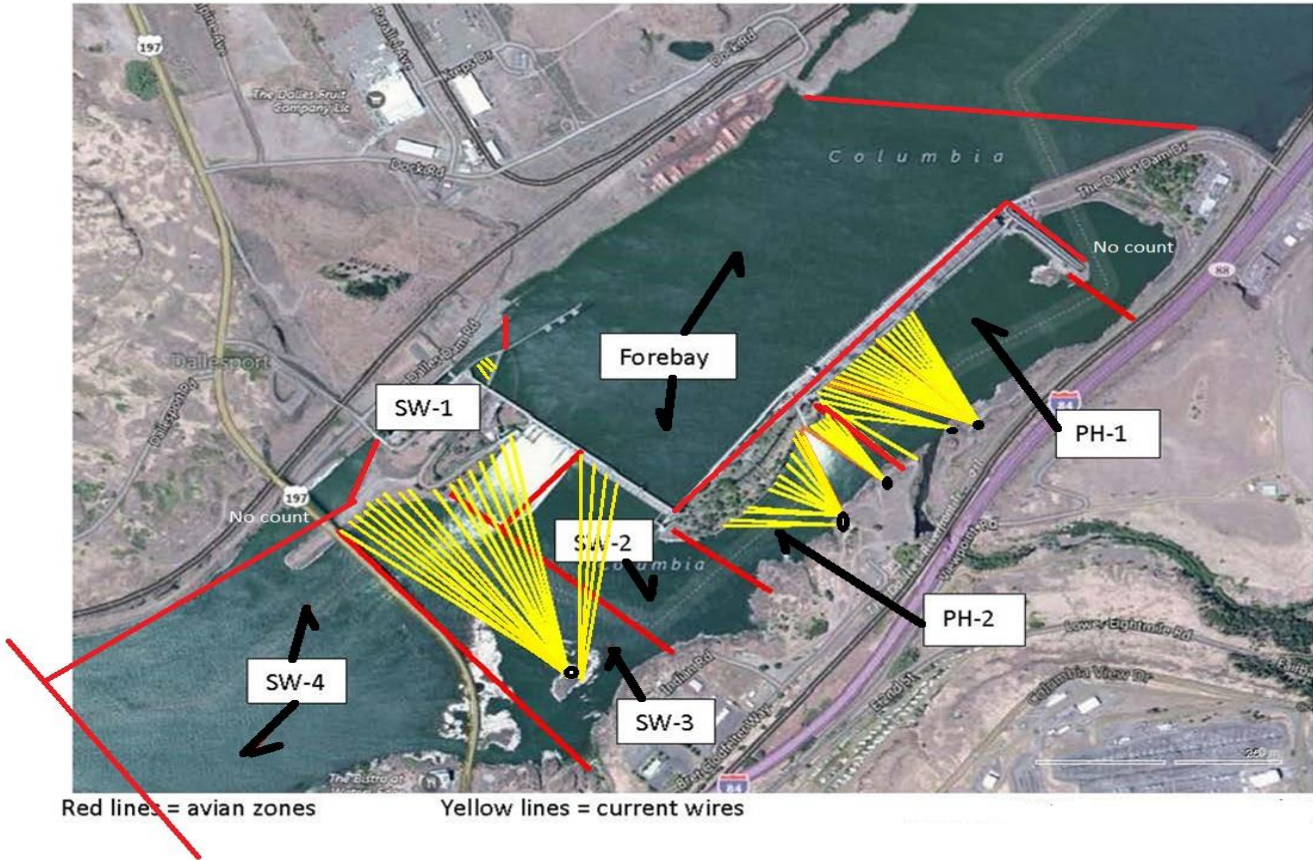
USGS river temperatures link [USGS ladder-river temperatures](#) [USGS ladder-river temperatures](#)  
4 peaks video counting will occur through winter. Power outage at north count station scheduled.  
Supporting lamprey improvements PDT. Two of 4 exit weir modified with lamprey orifice, Investigating mods for entrance weirs  
PTAGIS fishladder data collection at count stations continues

## Operations

Sluice gates 1-2, 1-3, 16-1, 16-2, endgate opened March 1

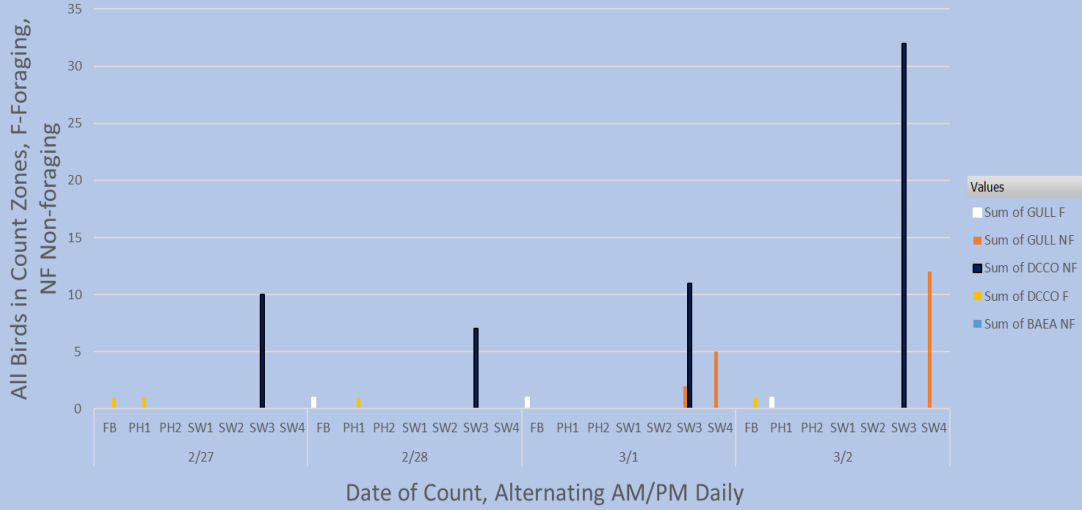
Approved by: Ron Twiner, Operation Project Manager, The Dalles Dam

# Bird Count Zones, Avian Lines and Laser Deterrent Sites



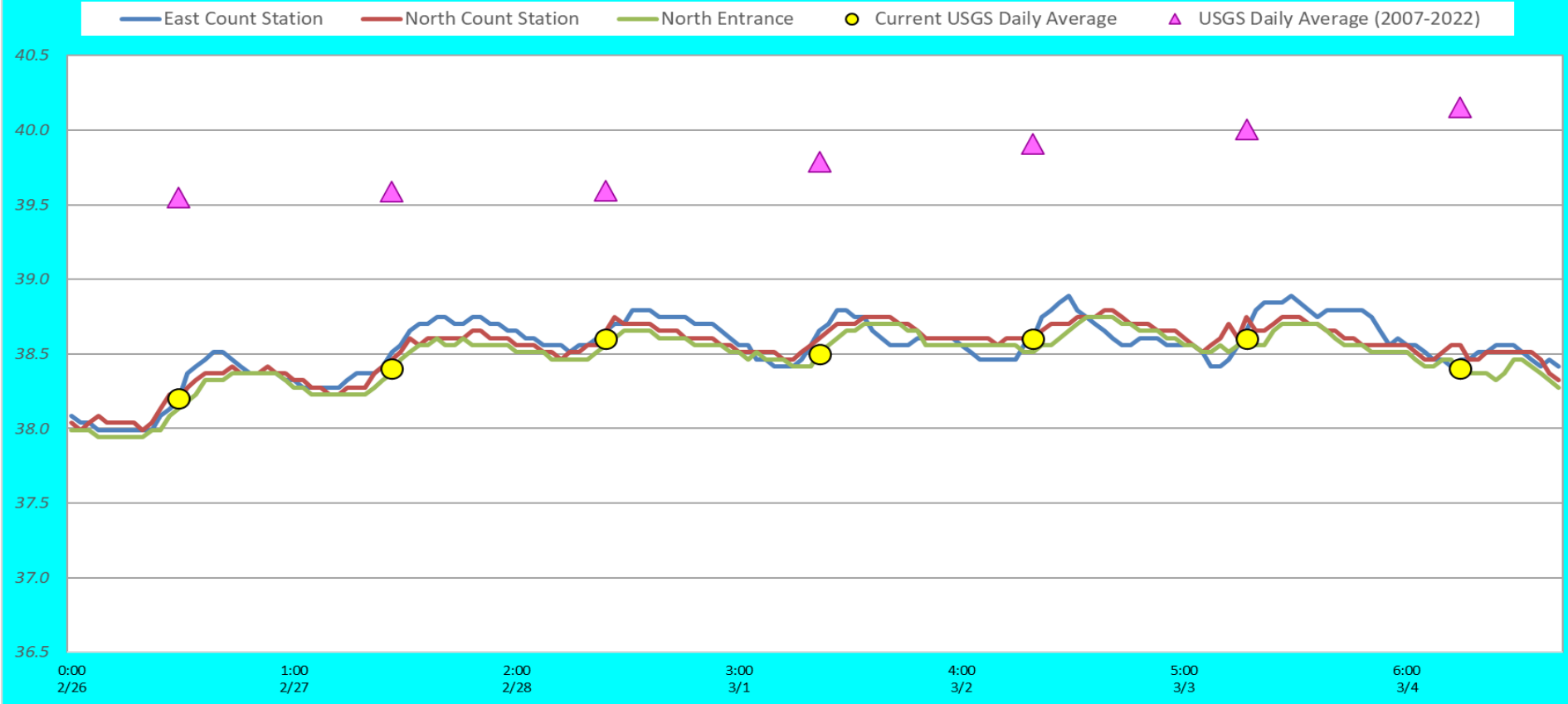


### Avian Count at TDA, 2/27 to 3/2/2023



+ -

### Adult Fish Ladders-River Temperatures





Small group of CAGU loafing and foraging in SW4 and FB. Arrived within minutes of ITS spillway opening.

Secchi:		USGS F°
5.0	Sun	38.2
5.0	Mon	38.4
5.0	Tue	38.6
5.0	Wed	38.5
5.0	Thurs	38.6
5.0	Fri	38.6
5.0	Sat	38.4
5.0	AVG	38.5

## Reporting week data

Date:	North Ladder		East Ladder											
			East Entrance					West Entrance			South Entrance			
	Differential	N1 Depth	Differential	E1 Depth	E2 Depth	E3 Depth	JP 6	Differential	W1	W2	W3	Differential	S1	S2
2/26	1.3	9.1	1.6	1.3	11.3	11.3	9.3	1.4	10.5	10.5	-3.5	1.5	9.7	9.6
2/27	1.2	9.4	1.3	1.5	11.4	11.4	9.5	1.6	10.0	9.9	-4.2	1.5	9.7	9.5
2/28	1.3	9.2	1.6	2.2	11.1	11.1	9.1	1.3	10.5	10.4	-4.2	1.4	9.4	9.3
3/1	1.3	9.3	1.5	0.3	12.0	12.0	10.0	1.5	10.1	10.0	-3.6	1.5	9.7	9.7
	1.6	9.2	2.1	-1.2	10.5	10.5	8.6	1.4	10.1	10.2	-5.0	1.5	9.1	8.9
3/2	1.2	8.9	1.5	2.2	11.7	11.7	8.7	1.5	10.1	10.1	-4.6	1.5	9.3	9.3
	1.3	9.1	1.4	2.2	11.7	11.7	8.7	1.4	10.0	10.0	-4.7	1.5	9.2	9.3
3/3	1.3	8.9	1.4	10.0	9.6	9.4	14.0	1.3	10.0	10.3	0.3	1.4	10.8	10.8
	1.3	8.9	1.5	3.3	11.1	11.1	8.4	1.4	9.9	9.9	-5.1	1.5	9.2	9.2
3/4	1.3	8.9	1.3	3.6	10.6	10.6	7.9	1.6	9.2	9.3	-5.8	no power-navlock work		
	1.3	8.6	1.6	3.9	10.6	10.6	7.9	1.6	9.6	9.7	-5.4			
<b>AVG:</b>	<b>1.3</b>	<b>9.0</b>	<b>1.5</b>	<b>2.7</b>	<b>11.0</b>	<b>11.0</b>	<b>9.3</b>	<b>1.4</b>	<b>10.0</b>	<b>10.0</b>	<b>-4.2</b>	<b>1.5</b>	<b>9.6</b>	<b>9.5</b>

*Fishways inspected daily*