

# The Dalles Dam Fishway Status Report

1/22/22

Inspection Period 1/15-1/21, 2022

## THE DALLES DAM



US Army Corps  
of Engineers  
Portland District

The Dalles Project-Fisheries  
P.O. Box 564  
The Dalles, OR 97058-9998  
Phone: 541-506-3800

<b>The Dalles Dam</b>	Inspections OOC	Criteria Limit	Total Number of Inspections: 7		Temperature: 38.9 °F
			Comments: W155 failure RCC restricted FB?		Weekly Ave. Secchi: 5.0

### NORTH FISHWAY

Exit differential	No attraction water at north entrance.	≤ 0.5'			
Count station differential		≤ 0.3'			
Weir crest depth		1.0' ± 0.1'			
Entrance weir N1		depth (≥ 8')	Average for the week	#DIV/0!	
Entrance Differential		1.0' - 2.0'	Average for the week	#DIV/0!	
N2		Closed			
PUD Intake differential		≤ 0.5'			

### EAST FISHWAY

Exit differential	0	≤ 0.5'	Significant floating mats of weeds at east exit. Not effecting flows or fish passage.		
Removable weirs 154-157	0	Per forebay	Note; 155 weir hoist failed. Forebay restriction minimum 157' applied.		
Weir 158-159 differential	0	1.1' ± 0.1'			
Count station differential	0	≤ 0.3'	Less weed plugging at pickets.		
153 Weir crest depth	0	1.3' ± 0.1'			
Junction pool weir JP6	0	> 7.0'	Weekly average	11.1	
East entrance differential	0	1.0' - 2.0'	Weekly average	1.3	
Entrance weir E1	0	No criteria	Weekly average	-1.9	
Entrance weir E2	4	depth (≥ 8')	Weekly average	6.1	
Entrance weir E3	0	depth (≥ 8')	Weekly average	6.1	
Collection channel velocity	0	1.5 - 4 fps	1.6 fps 11/3		
Transportation channel velocity	0	1.5 - 4 fps	4.3 fps 11/3		
North channel velocity	0	1.5 - 4 fps	3.32 fps 11/5		
South channel velocity	0	1.5 - 4 fps	4.47 fps 10/15		
West entrance differential	0	1.0' - 2.0'	Weekly average	1.4	
Entrance weir W1	0	depth (≥ 8')	Weekly average	9.2	
Entrance weir W2	6	depth (≥ 8')	Weekly average	4.7	
Entrance weir W3	0	No criteria	Weekly average	-2.5	
South entrance differential	0	1.0' - 2.0'	Weekly average	1.4	
Entrance weir S1	0	depth (≥ 8')	Weekly average	9.9	
Entrance weir S2	0	depth (≥ 8')	Weekly average	0.4	Closed during one Fish Unit flows, No criteria

### JUVENILE BYPASS

Sluicgate operation	0	Units 1, 8, 18	Intakes MU1, 8, 16 and 18 open to recirculate. Endgate closed.		
Turbine trashrack drawdown	0	<1.5', biwkly	Nothing to report.		
Spill volume/pattern	0	1 to 22	NO SPILL.		
Turbine Unit Priority	0	per FPP			
Gatewells	0	Weekly	Nothing to report. No trash.		

## Current Outages

MU19 & MU20 FOOS 10/07/2018 1205 – 10/27/2023 T10 ACETYLENE

MU12 OOS 04/12/2021 – 9/22/2023 ANNUAL

MU18 OOS 08/29/2022-1/26/2023 1/28/2022

MU21 OOS 12/12/2022 0630 – 01/26/2023, GENERATOR FALL PROTECTION

F1 OOS 11/26/2022 0630 - 02/2/2023 for 2 YEAR OH

## Maintenance

Plan fo fish unit intake trashrack rake to be usable by March 1

Weir 155 repair. Still finding problems with hoist gears. Pulled gearbox for full overhaul.

AWS intake trashrack debris management - PDT reviewing alternatives.

Planning spill gates 9 and 10 cable and gearbox swap. Replacing bulkhead seals needed. Completion estimate end march.

Spillway assessment; Spillgates 1- 9 rehab 2034. Includes spillbay 9 trunnion pin repair. Spillway crane first priority

North fishladder dewatering attempt stopped due to high numbers of adult salmonids. Maintenance plans still include; pulling exit trashrack for repair, pulling PUD trashrack to inspect, repair count station crowder drive, inspect entrance weir seals/wheels.

## Predators

Bald eagles coming and going with the weather. Group of 50+ western gulls downstream of 197 bridge.

Planning removal of bass/walleye/catfish from all dewaterings for gut sample analysis. Presently in WDFW permit process.

Resident cormorants foraging around project, not at east ladder exit.

Northern Pikeminnow Management Program Columbia River Dam Angling & Site-Specific Fishery complete for the year

## Research/Construction/Contractors

USGS river temperatures link [USGS ladder-river temperatures](#)

4 peaks video counting will occur through winter.

Supporting lamprey improvements PDT. Two of 4 exit weir modified with lamprey orifice, Investigating mods for entrance weirs

PTAGIS fishladder data collection at count stations continues

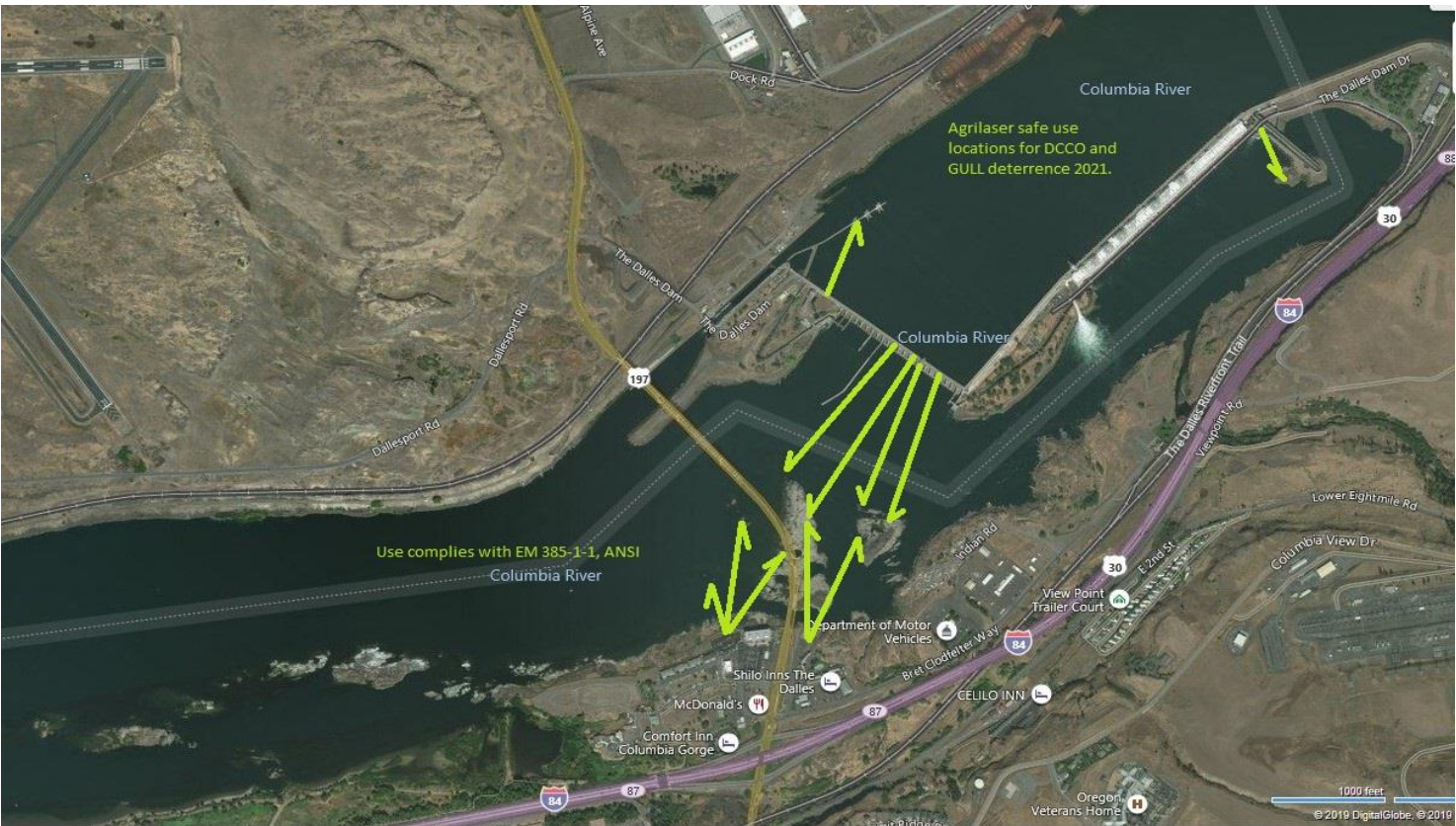
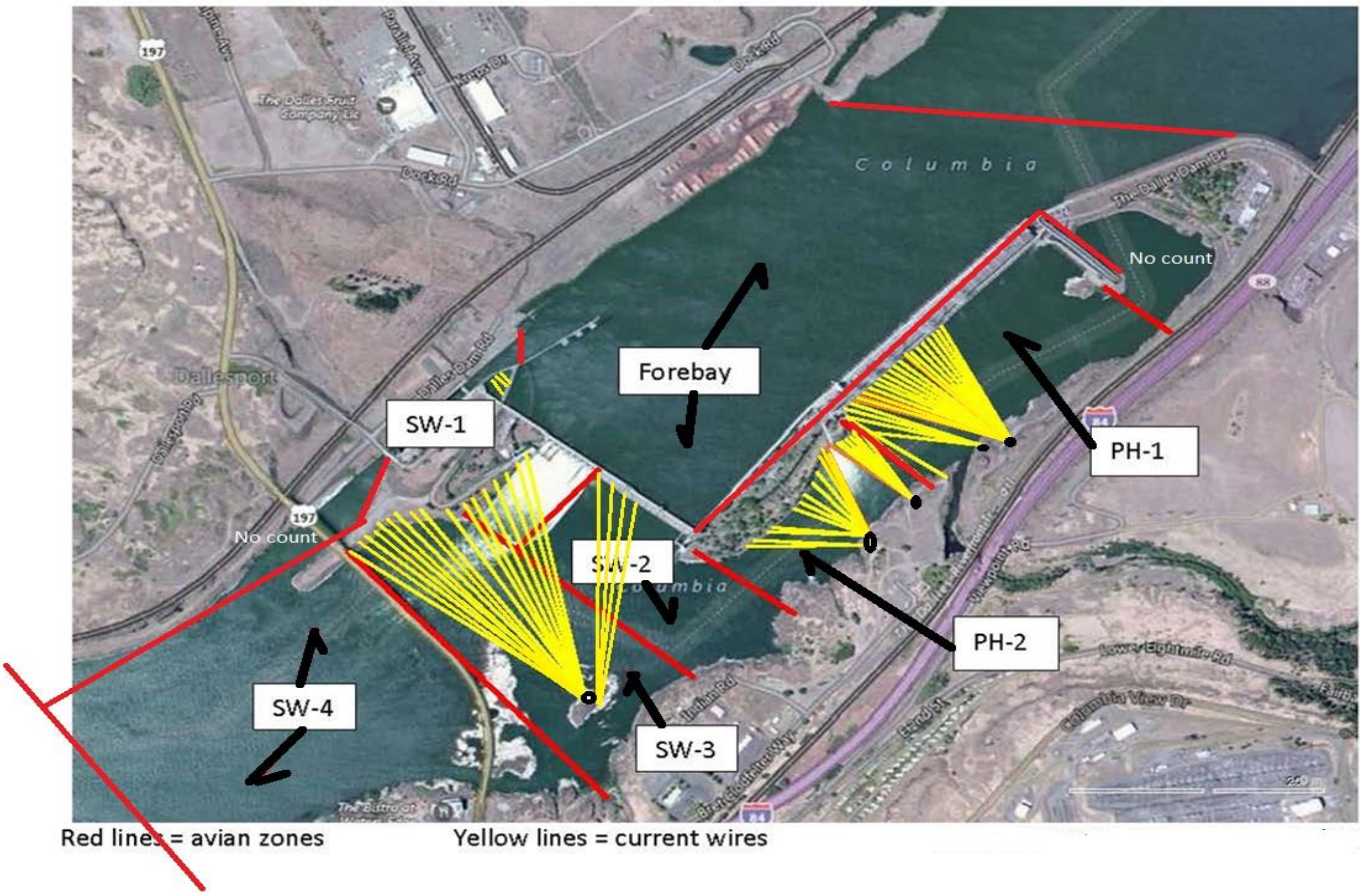
## Operations

Ice Trash sluiceway endgate closed. Sluiceways open to forebay.

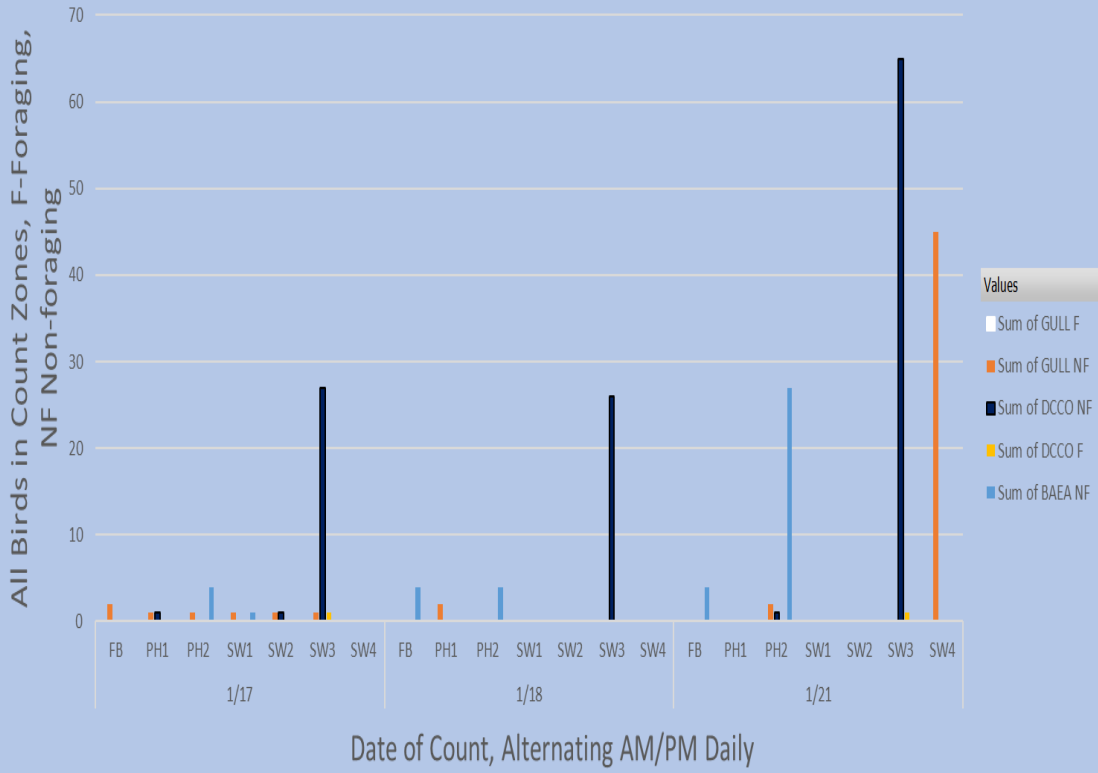
East fishway in service with 1 fish unit #2. North fishladder in service with no attraction flow for maintenance.

Approved by: Ron Twiner, Operation Project Manager, The Dalles Dam

# Bird Count Zones, Avian Lines and Laser Deterrent Sites



### Avian Count at TDA, 1/17 to 1/21/2022



+ -

### Adult Fish Ladders-River Temperatures

— East Count Station — North Entrance ▲ USGS Daily Average (2007-2022)



Secchi:		USGS°F
5.0	Sun	38.8
5.0	Mon	38.8
5.0	Tue	38.8
5.0	Wed	38.9
5.0	Thurs	38.9
5.0	Fri	38.9
5.0	Sat	39.0
5.0	AVG	38.9

## Reporting week data

Date:	North Ladder		East Ladder													
			East Entrance					West Entrance			South Entrance					
	Differential	N1 Depth	Differential	E1 Depth	E2 Depth	E3 Depth	JP 6	Differential	W1	W2	W3	Differential	S1	S2		
1/15	North Ladder has no attraction water.		One fish unit running 2500cfs attraction water.													
			1.3	-2.0	5.5	8.1	11.2	1.2	8.1	6.3	-2.5	1.5	8.0	3.6		
1/16				1.2	-1.4	3.7	8.0	11.7	1.3	8.4	6.6	-2.1	1.5	8.3	3.9	
1/17				1.3	-2.8	8.2	8.2	10.2	1.1	8.0	8.1	-3.2	1.6	9.5	-1.3	
1/18				1.2	-1.5	8.4	8.0	11.6	1.6	9.9	4.4	-2.5	1.3	9.4	0.1	
1/19				1.5	-1.6	6.2	10.5	11.4	1.6	10.0	2.7	-2.2	1.4	10.5	2.5	
1/20				1.4	-2.2	4.4	6.9	10.8	1.5	9.5	2.1	-2.8	1.5	11.5	-3.2	
1/21																
					Operator error					1.5	10.1	2.7	-2.1	1.3	12.1	-2.8
<b>AVG:</b>			#DIV/0!	#DIV/0!	1.3	-1.9	6.1	8.3	11.1	1.4	9.2	4.7	-2.5	1.4	9.9	0.4

*Fishways are inspected twice daily.*

found out of criteria



Perfect time for use of green laser on roosting cormorants.

