

The Dalles Dam Fishway Status Report

1/15/23

Inspection Period 1/8-1/14, 2023

THE DALLES DAM



US Army Corps
of Engineers
Portland District

The Dalles Project-Fisheries
P.O. Box 564
The Dalles, OR 97058-9998
Phone: 541-506-3800

The Dalles Dam	Inspections OOC	Criteria Limit	Total Number of Inspections: 7		Temperature: 38.2 °F
			Comments: East ladder rewatered.		Weekly Ave. Secchi: 5.0

NORTH FISHWAY

Exit differential	0	≤ 0.5'	Large amounts of floating milfoil kept out by boom and raking gratings.		
Count station differential	0	≤ 0.3'	Video counting is ongoing		
Weir crest depth	0	1.0' ± 0.1'	North ladder is rock solid automation.		
Entrance weir N1	0	depth (≥ 8')	Avg. for week	9.8	
Entrance Differential	0		1.0' - 2.0'	Avg. for week	1.4
N2	0	Closed			
PUD Intake differential	0	≤ 0.5'	PUD and hand raking keeping up with floating stems of aquatic weeds mostly.		

EAST FISHWAY

Exit differential	0	≤ 0.5'			
Removable weirs 154-157	0	Per forebay	Note; 155 weir hoist failed. Forebay restriction minimum 157' applied.		
Weir 158-159 differential	0	1.1' ± 0.1'			
Count station differential	0	≤ 0.3'			
153 Weir crest depth	0	1.3' ± 0.1'			
Junction pool weir JP6	0	> 7.0'	Weekly average	11.1	
East entrance differential	0	1.0' - 2.0'	Weekly average	1.3	
Entrance weir E1	0	No criteria	Weekly average	-1.7	
Entrance weir E2	3	depth (≥ 8')	Weekly average	6.0	
Entrance weir E3	3	depth (≥ 8')	Weekly average	7.8	
Collection channel velocity	0	1.5 - 4 fps	1.6 fps 11/3		
Transportation channel velocity	0	1.5 - 4 fps	4.3 fps 11/3		
North channel velocity	0	1.5 - 4 fps	3.32 fps 11/5		
South channel velocity	0	1.5 - 4 fps	4.47 fps 10/15		
West entrance differential	0	1.0' - 2.0'	Weekly average	1.2	
Entrance weir W1	3	depth (≥ 8')	Weekly average	7.1	
Entrance weir W2	3	depth (≥ 8')	Weekly average	7.2	
Entrance weir W3	0	No criteria	Weekly average	-2.0	
South entrance differential	0	1.0' - 2.0'	Weekly average	1.6	
Entrance weir S1	0	depth (≥ 8')	Weekly average	8.1	
Entrance weir S2	0	depth (≥ 8')	Weekly average	2.2	

JUVENILE BYPASS

Sluiceway operation	0	closed	Endgate closed 12/16/22. Intakes 1-8-16-18 open.		
Turbine trashrack drawdown	0	<1.5', biwkly			
Spill volume/pattern	0	1 to 22	NO SPILL.		
Turbine Unit Priority	0	per FPP			
Gatewells	0	Weekly	Accumulating floating debris at ITS intakes. Gatewells clear.		

Current Outages

MU19 & MU20 FOOS 10/07/2018 – 10/27/2023 T10 ACETYLENE

MU12 OOS 04/12/2021 – 9/22/2023 ANNUAL

MU18 OOS 08/29/2022 -1/26/2023, COOLER

F1 OOS 11/26/2022 - 01/26/2023, 2 YEAR

F2 OOS 12/01/2022 - 01/04/2023, ANNUAL

MU21 OOS 12/12/2022 – 01/26/2023, GENERATOR FALL PROTECTION

Maintenance

ROV inspection of fish unit intake trashrack Jan18 to assess aquatic vegetation buildup.

Planning to use fish unit intake trashrack rake in anticipation for future debris buildup concerns. To be in service by March 1.

EFL exit weir 155 continues to have limit problems. Working on solution.

Plan to pull north entrance trashrack end of Jan for inspection.

Calibrations: North entrance maintaining criteria. East entrances newly recalibrated by TDE.

Spillway assessment; Spillgates 1- 9 rehab 2034. Includes spillbay 9 trunnion pin repair. Spillway crane first priority

Planning spill gates 9 and 10 cable and gearbox swap. Replacing bulkhead seals needed. Completion estimate end march.

Fish unit rehab Phase 1A awaiting funding.

AWS intake trashrack debris management - PDT reviewing alternatives.

Predators

High numbers Bald Eagles dominating in westrick park. Western/glaucus wing gulls not spending overnight on project

Hybrid gulls only daily, unable to feed due to eagles. Cormorants foraging around project at MU intakes.

Using green laser to move gulls and cormorants from common resting areas.

Construction/Contractors

[USGS ladder-river temperatures-F°](#)

4 peaks counting 4/1-10/31. Video continued through December.

Fish Accords Lamprey Passage plan ongoing at 90% due 09/01 DDR junction pool LPS. Investigating mods for entrance and exit weirs.

PTAGIS fishladder data collection at count stations continues

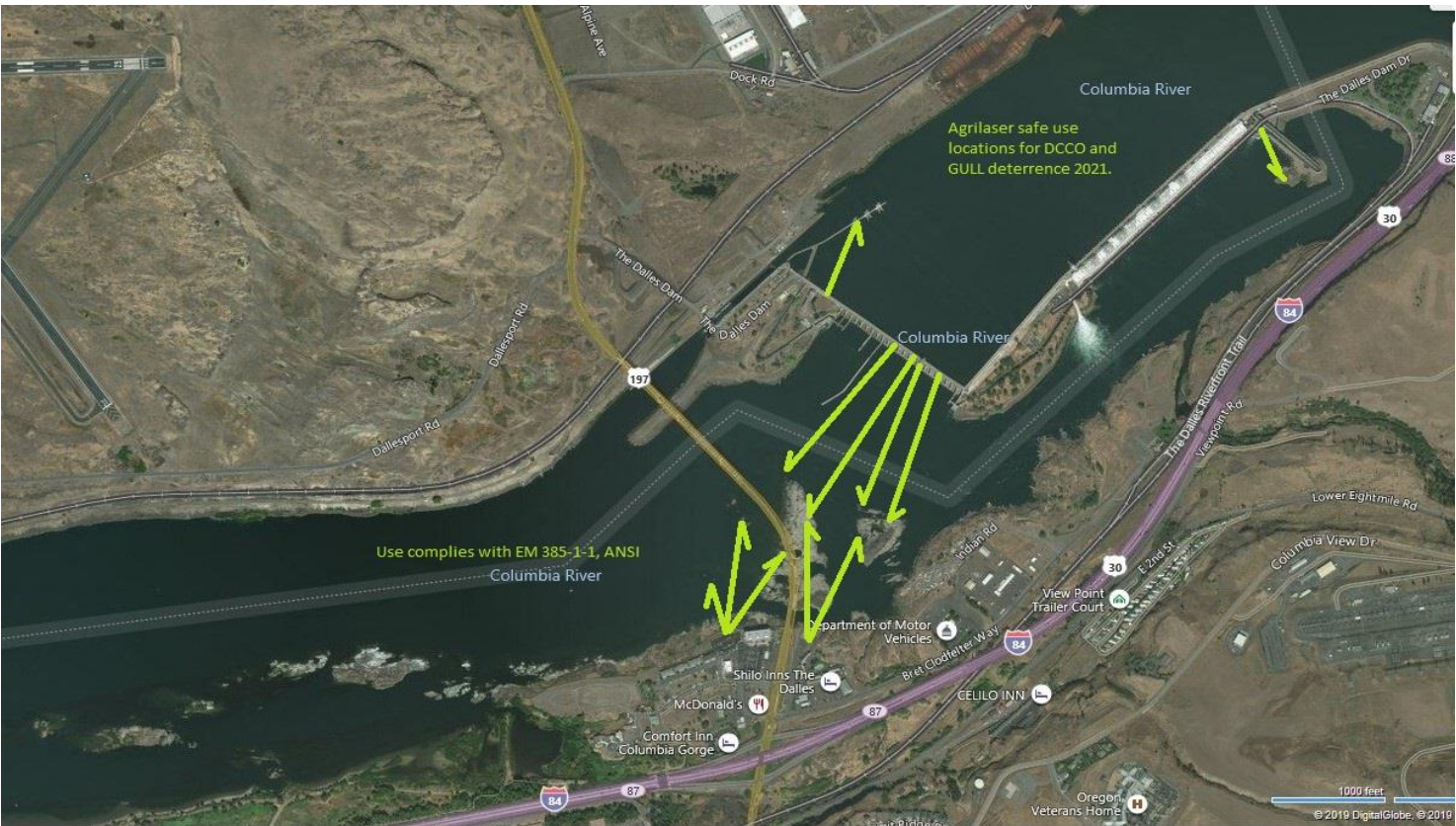
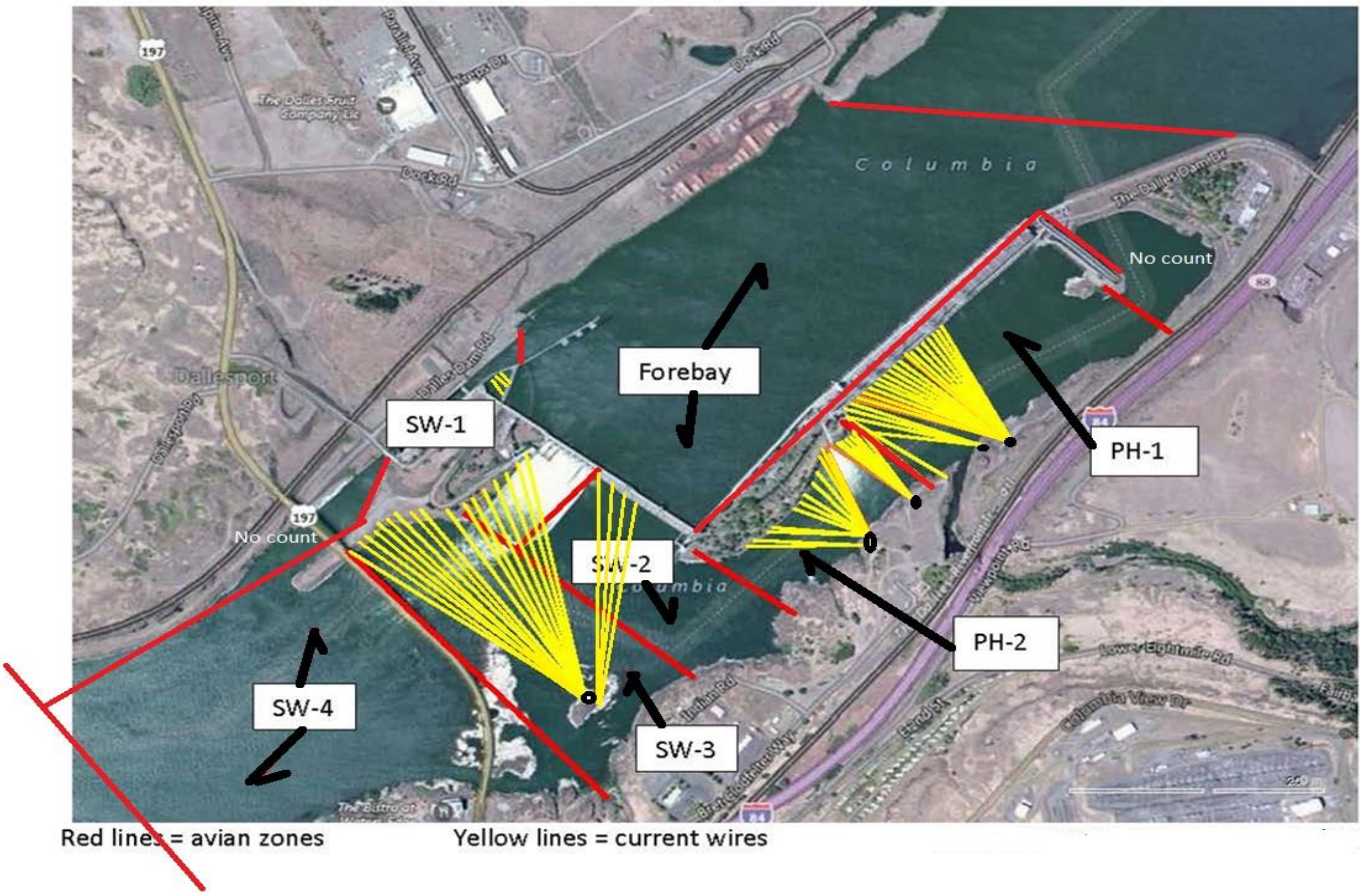
Operations

Ice Trash sluiceway endgate closed. Sluiceways 1,16 open to forebay.

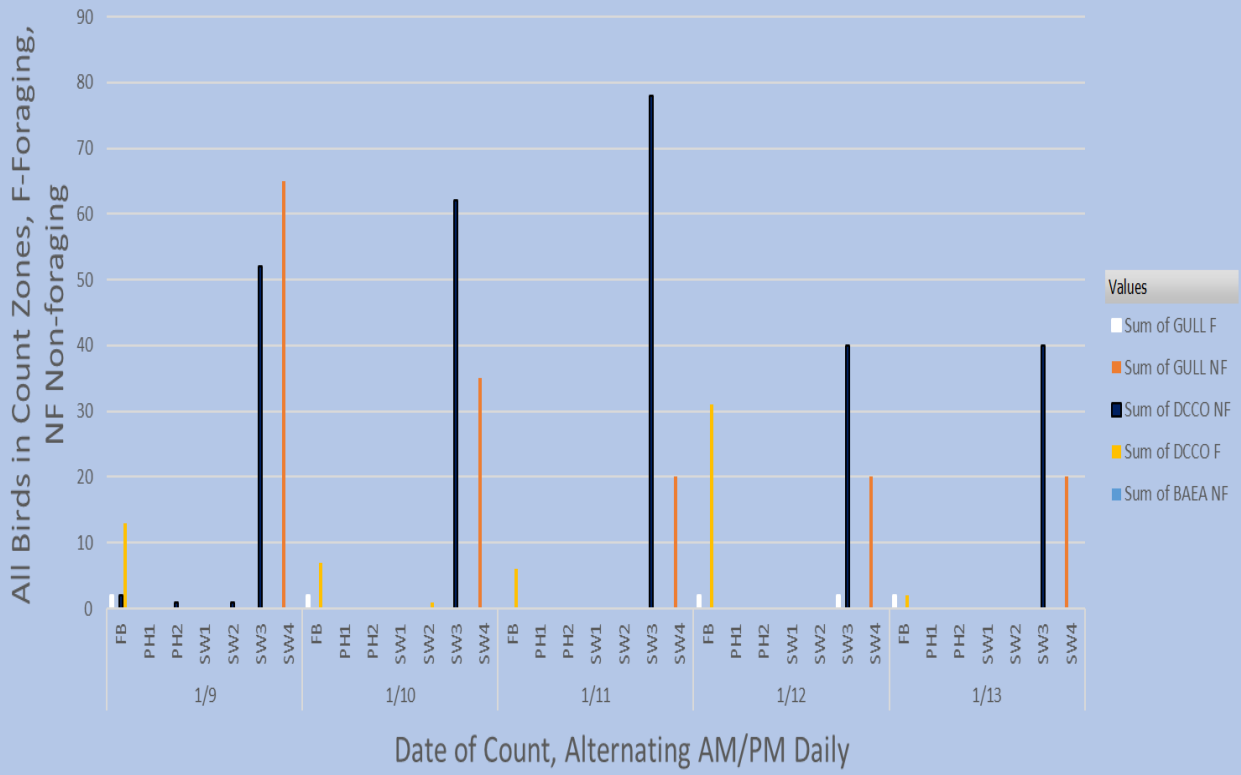
North fishways in full service. East fishway dewatered for winter maintenance.

Approved by: Ron Twiner, Operation Project Manager, The Dalles Dam

Bird Count Zones, Avian Lines and Laser Deterrent Sites

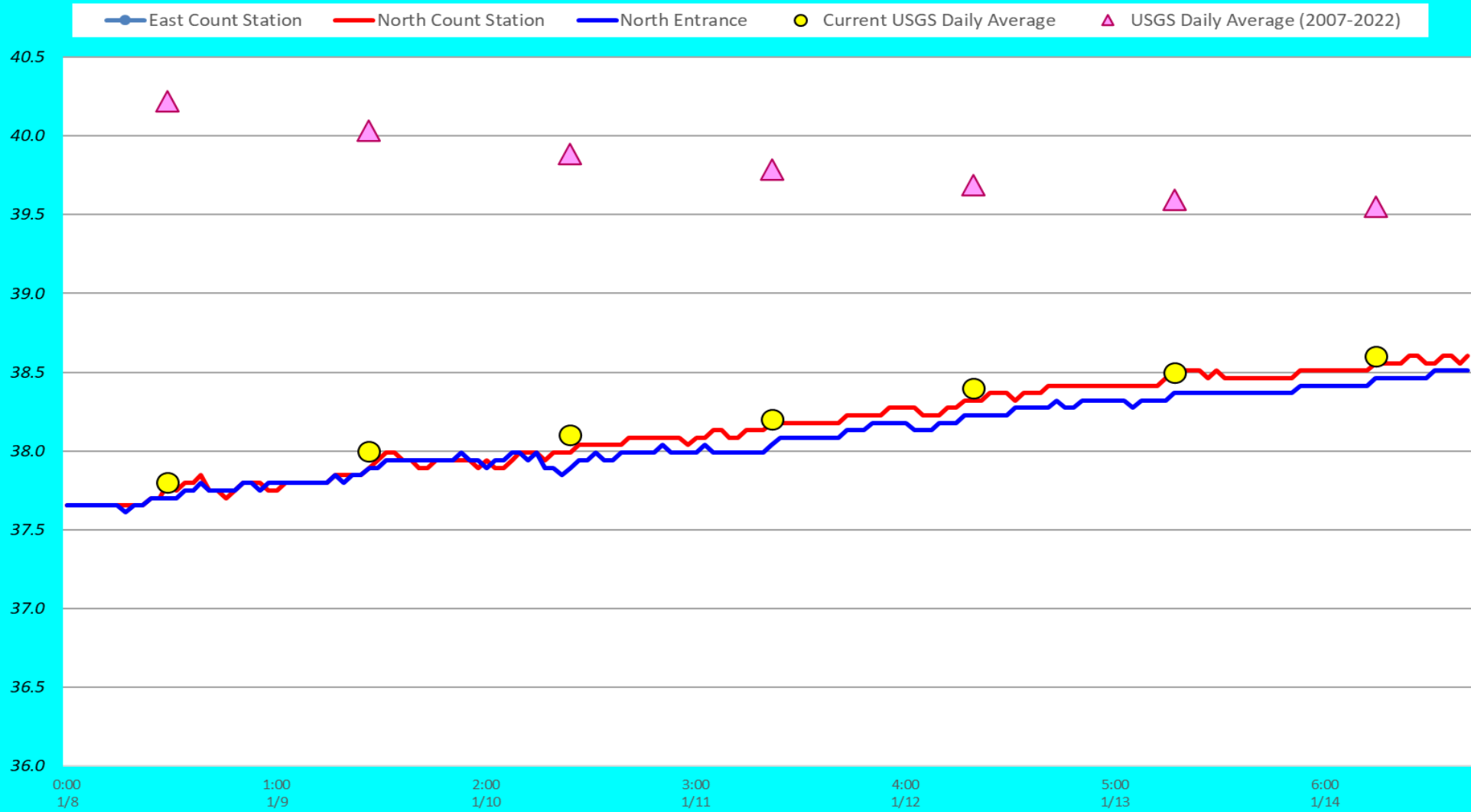


Avian Count at TDA, 1/9 to 1/13/2022



Endgate closed 12/16/22. Intakes 1-8-16-18 open.

North Fish Ladder-River Temperatures



	Secchi:		USGS°F
1/8/2023	5.0	Sun	37.8
	5.0	Mon	38.0
	5.0	Tue	38.1
	5.0	Wed	38.2
	5.0	Thurs	38.4
1/14/2023	5.0	Fri	38.5
	5.0	Sat	38.6
	5.00	AVG	38.2

Reporting week data

Date:	North Ladder		East Ladder											
			East Entrance					West Entrance			South Entrance			
	Differential	N1 Depth	Differential	E1 Depth	E2 Depth	E3 Depth	JP 6	Differential	W1	W2	W3	Differential	S1	S2
1/8	1.4	9.8	EAST LADDER DEWATERED											
1/9	1.3	9.9												
1/10	1.4	9.6												
1/11	1.5	9.6												
1/12	1.4	9.8												
			1.1	-1.4	7.1	7.1	10.6	1.0	7.1	7.3	-1.1	1.6	8.3	no criteria
1/13	1.5	9.7	1.5	-1.7	5.6	8.3	11.5	1.4	7.3	7.2	-2.3	1.6	8.1	-0.7
1/14	1.3	10.1	1.4	-2.1	5.4	8.1	11.1	1.3	7.1	7.0	-2.5	1.5	8.0	3.6
AVG:	1.4	9.8	1.3	-1.7	6.0	7.8	11.1	1.2	7.1	7.2	-2.0	1.6	8.1	2.2

Fishways are inspected once daily 12/1/22.

found out of criteria



Unidentified piscivorous bird in north fishladder