

The Dalles Dam Fishway Status Report

12/24/22

Inspection Period 12/18-12/24, 2022

THE DALLES DAM



US Army Corps
of Engineers
Portland District

The Dalles Project-Fisheries
P.O. Box 564
The Dalles, OR 97058-9998
Phone: 541-506-3800

| | | | | | |
|-----------------------|--------------------|-------------------|--|--|---------------------------------|
| The Dalles Dam | Inspections OOC | Criteria Limit | Total Number of Inspections: 8 | | Temperature: #DIV/0! °F |
| | | | Comments: FUs OOS, east entrances flushing. | | Weekly Ave. Secchi: 5.0+ |

NORTH FISHWAY

| | | | | | |
|----------------------------|---|--------------|---|------|--|
| Exit differential | 0 | ≤ 0.5' | Large amounts of floating milfoil kept out by boom and raking gratings. | | |
| Count station differential | 0 | ≤ 0.3' | Video counting is ongoi | | |
| Weir crest depth | 0 | 1.0' ± 0.1' | North ladder is rock solid automation. | | |
| Entrance weir N1 | 0 | depth (≥ 8') | Avg. for week | 10.0 | |
| Entrance Differential | 0 | | Avg. for week | 1.4 | |
| N2 | 0 | Closed | | | |
| PUD Intake differential | 0 | ≤ 0.5' | PUD keeping up with raking floating milfoil mostly | | |

EAST FISHWAY -UNDERGOING WINTER MAINTAINENCE

JUVENILE BYPASS

| | | | | | |
|----------------------------|---|---------------|-------------------------|--|--|
| Sluicagate operation | 0 | closed | Endgate closed 12/16/22 | | |
| Turbine trashrack drawdown | 0 | <1.5', biwkly | | | |
| Spill volume/pattern | 0 | 1 to 22 | NO SPILL. | | |
| Turbine Unit Priority | 0 | per FPP | | | |
| Gatewells | 0 | Weekly | | | |

Current Outages

MU19 & MU20 FOOS 10/07/2018 – 10/27/2023 T10 ACETYLENE

MU12 OOS 04/12/2021 – 9/22/2023 ANNUAL

MU18 OOS 08/29/2022 -1/26/2023, COOLER

F1 OOS 11/26/2022 - 01/26/2023, 2 YEAR

F2 OOS 12/01/2022 - 01/04/2023, ANNUAL

MU21 OOS 12/12/2022 – 01/05/2023, GENERATOR FALL PROTECTION

Maintenance

Planning to use fish unit intake trashrack rake in anticipation for future debris buildup concerns. To be in service by March 1.

EFL exit weir 155 repair in progress. Weirs 154 and 155 cutting lamprey orifices per PDT recommendation.

Permanent oil boom reinstallation completed December 13 and 14.

Calibrations: All entrances maintaining criteria.

Spillway assessment (MRER); Spillgates 1- 9 rehab 2034. Includes spillbay 9 trunnion pin repair. Spillway crane first priority

Planning spill gates 9 and 10 cable and gearbox swap. Replacing bulkhead seals needed. Completion estimate end march.

Fish unit rehab Phase 1A awaiting funding.

AWS intake trashrack debris management - PDT reviewing alternatives.

Planning repair of AWS trashrack lift beam for easier use if needed.

Fish unit intake ROV inspection planned for Jan18

Predators

Bald Eagles using westrick park.

Resident cormorants foraging around project, 50-80 common mergansers getting shad in power tailrace.

Construction/Contractors

[USGS ladder-river temperatures-F°](#)

4 peaks counting 4/1-10/31. Video counting will occur through December this year.

Fish Accords Lamprey Passage plan ongoing at 90% due 09/01 DDR junction pool LPS. Investigating mods for entrance and exit weirs.

PTAGIS fishladder data collection at count stations continues

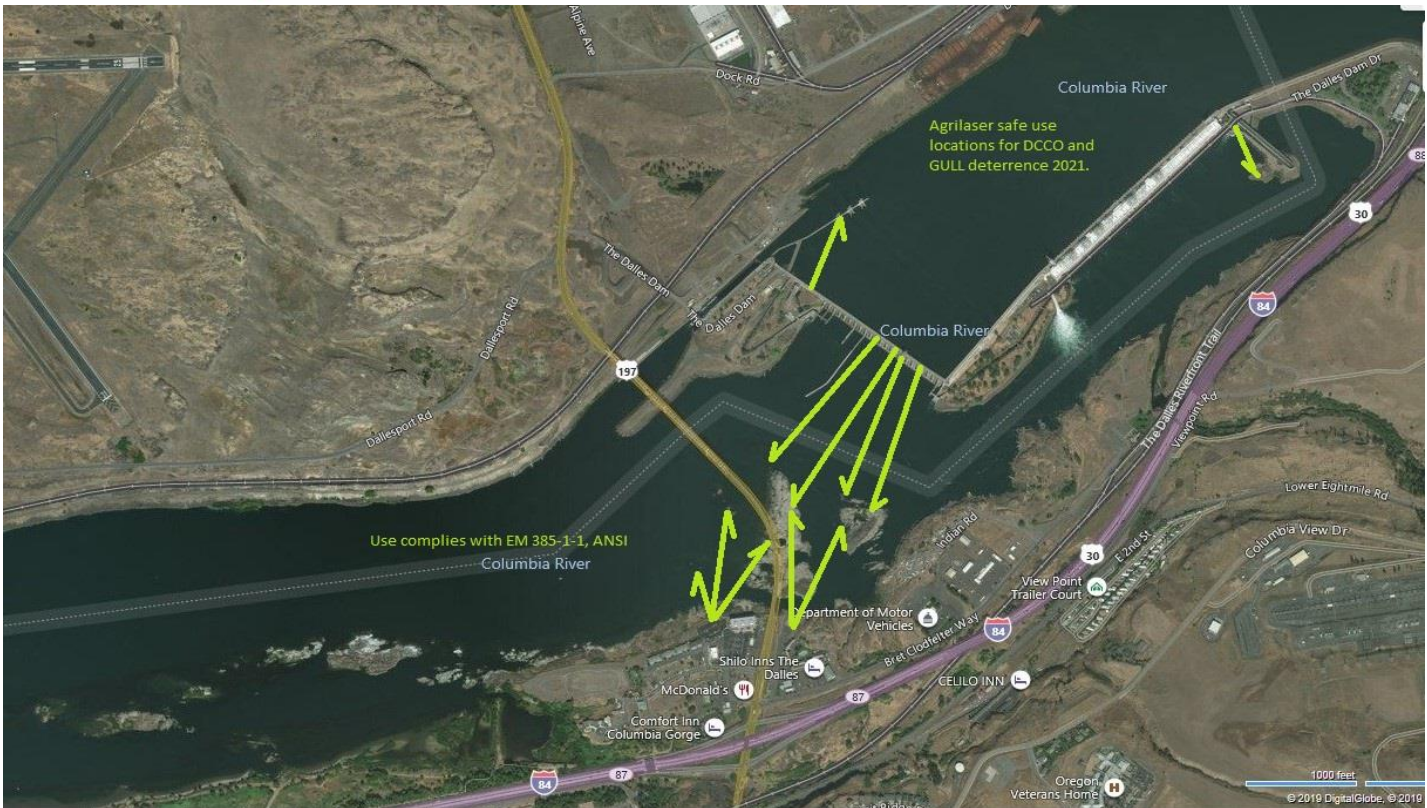
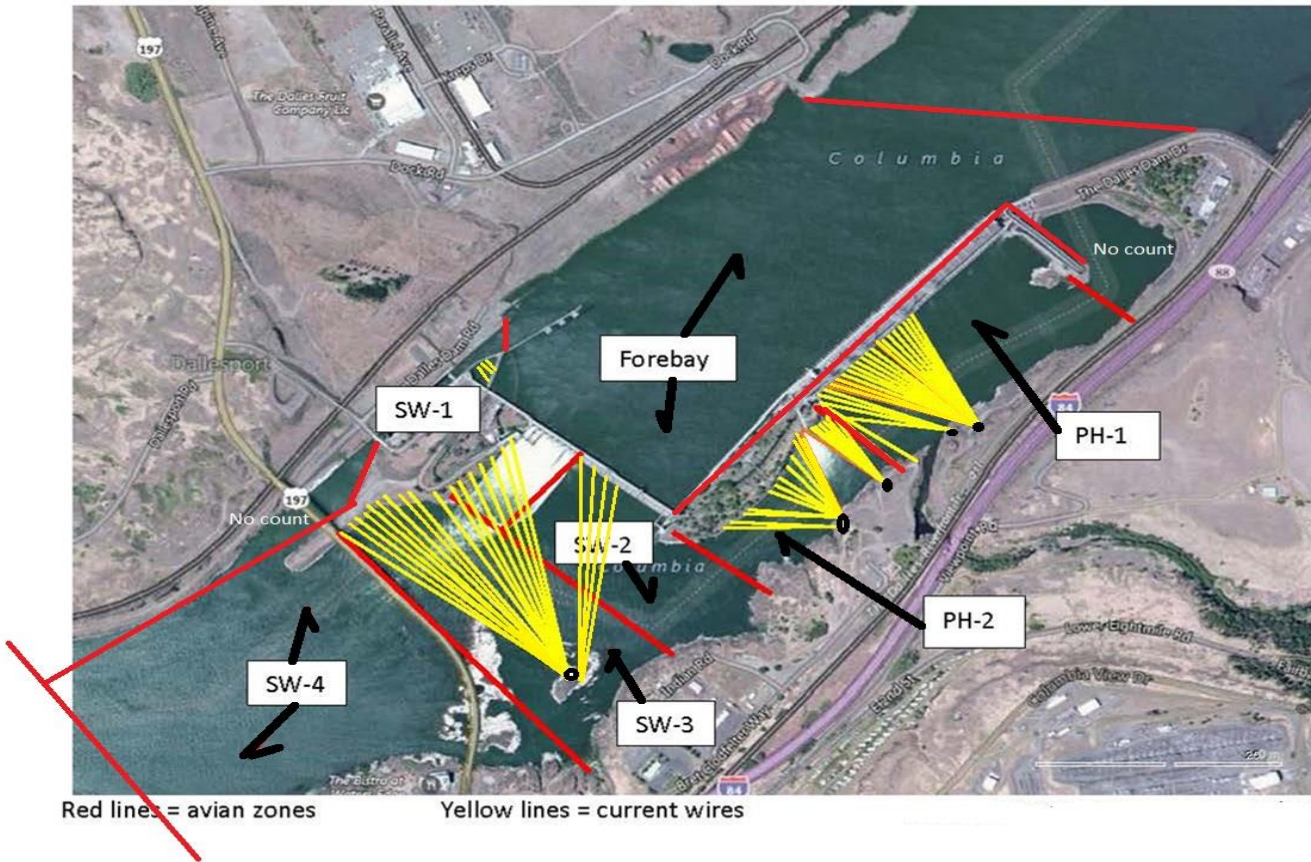
Operations

Ice Trash sluiceway endgate closed. Sluiceways 1,16 open to forebay.

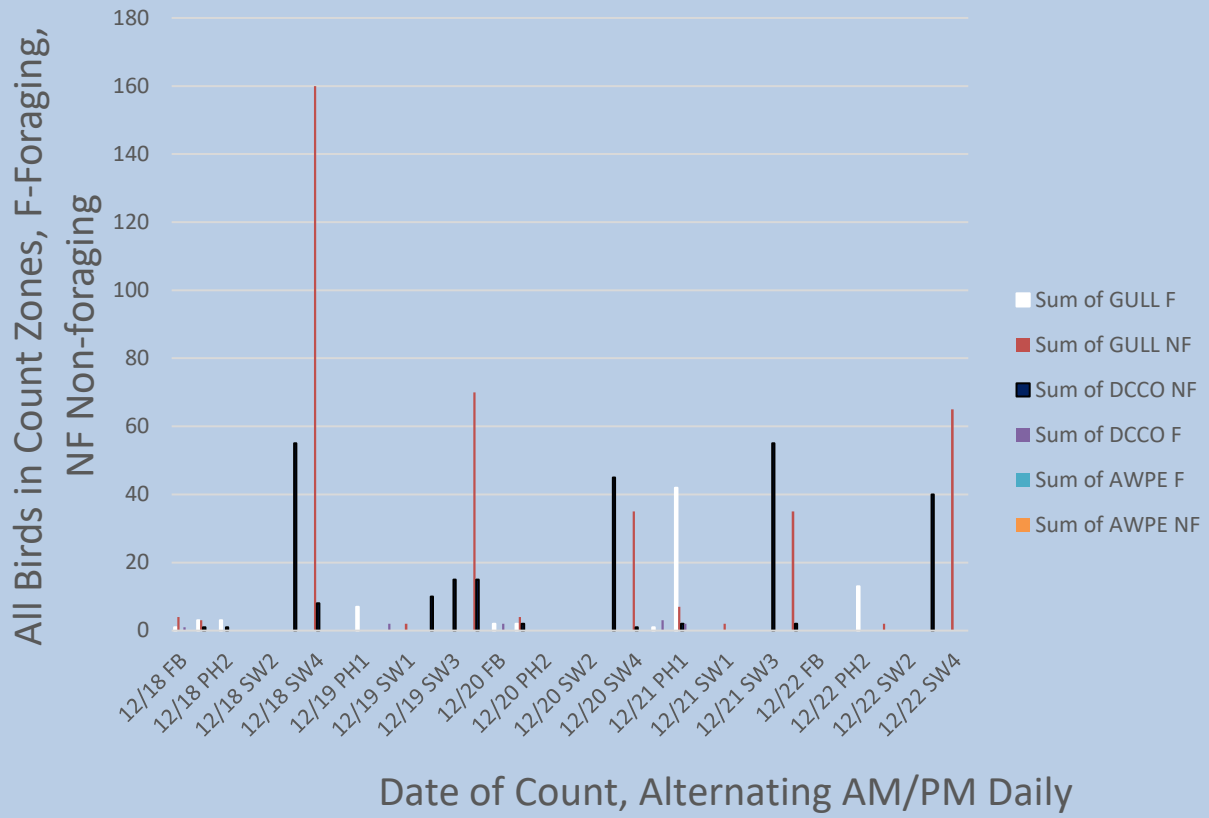
East and North fishways in full service

Approved by: Ron Twiner, Operation Project Manager, The Dalles Dam

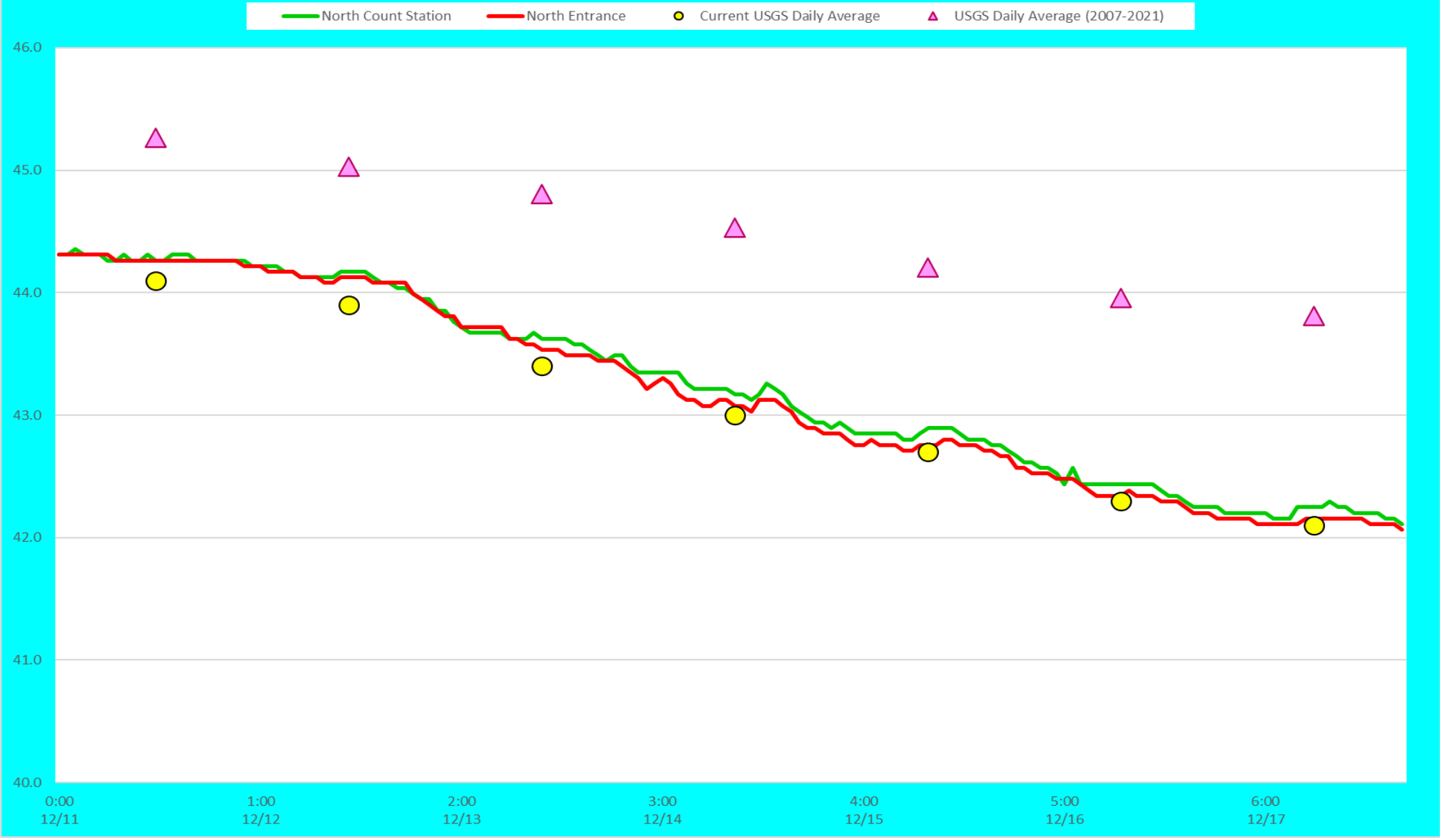
Bird Count Zones, Avian Lines and Laser Deterrent Sites



Avian Count at TDA, 12/18 to 12/22/2022



North Fish Ladder-River Temperatures



| | | |
|---------|-------|---------|
| Secchi: | | USGS°F |
| 5.0 | Sun | |
| 5.0 | Mon | |
| 5.0 | Tue | |
| 5.0 | Wed | |
| 5.0 | Thurs | |
| 5.0 | Fri | |
| 5.0 | Sat | |
| 5.0+ | AVG | #DIV/0! |

Reporting week data

| Date: | North Ladder | | East Ladder | | | | | | | | | | | | | | | | | | | | | | |
|-------------|--------------|----------|-----------------------|----------|----------|----------|------|---------------|----|----|----------------|--------------|----|---------|---------|---------|---------|---------|---------|---------|---------|---------|---------|---------|---------|
| | Differential | N1 Depth | East Entrance | | | | | West Entrance | | | South Entrance | | | | | | | | | | | | | | |
| | | | Differential | E1 Depth | E2 Depth | E3 Depth | JP 6 | Differential | W1 | W2 | W3 | Differential | S1 | S2 | | | | | | | | | | | |
| 12/18 | 1.4 | 9.7 | EAST LADDER DEWATERED | | | | | | | | | | | | | | | | | | | | | | |
| 12/19 | 1.5 | 9.7 | | | | | | | | | | | | | | | | | | | | | | | |
| | 1.3 | 9.9 | | | | | | | | | | | | | | | | | | | | | | | |
| 12/20 | 1.4 | 9.9 | | | | | | | | | | | | | | | | | | | | | | | |
| | 1.5 | 10.7 | | | | | | | | | | | | | | | | | | | | | | | |
| 12/21 | 1.4 | 10.1 | | | | | | | | | | | | | | | | | | | | | | | |
| 12/22 | 1.3 | 9.9 | | | | | | | | | | | | | | | | | | | | | | | |
| 12/23 | not recorded | | | | | | | | | | | | | | | | | | | | | | | | |
| 12/24 | not recorded | | | | | | | | | | | | | | | | | | | | | | | | |
| AVG: | 1.4 | 10.0 | | | | | | | | | | | | #DIV/0! | #DIV/0! | #DIV/0! | #DIV/0! | #DIV/0! | #DIV/0! | #DIV/0! | #DIV/0! | #DIV/0! | #DIV/0! | #DIV/0! | #DIV/0! |

Fishways are inspected once daily 12/1/22.

found out of criteria



Correction: This is likely a hybrid cross western gull/glaucus winged gull.