

The Dalles Dam Fishway Status Report

12/15/22

Inspection Period 12/4-12/10, 2022

THE DALLES DAM



US Army Corps
of Engineers
Portland District

The Dalles Project-Fisheries
P.O. Box 564
The Dalles, OR 97058-9998
Phone: 541-506-3800

The Dalles Dam	Inspections OOC	Criteria Limit	Total Number of Inspections: 8		Temperature: 44.5 °F
			Comments: FUs OOS, east entrances flushing.		Weekly Ave. Secchi: 5.0+

NORTH FISHWAY

Exit differential	0	≤ 0.5'			
Count station differential	0	≤ 0.3'			
Weir crest depth	0	1.0' ± 0.1'			
Entrance weir N1	0	depth (≥ 8')		17.5	
Entrance Differential	0	1.0' - 2.0'		1.3	
N2	0	Closed			
PUD Intake differential	0	≤ 0.5'			

EAST FISHWAY -UNDERGOING WINTER MAINTAINENCE

JUVENILE BYPASS

Sluicgate operation	0	Units 1, 8, 18	MU 18 OOS, sluice gate 16-2 in operation
Turbine trashrack drawdown	0	<1.5', biwklly	Monitoring FU drawdown due to weed buildup on intakes. Stable at .1' on all FUs
Spill volume/pattern	0	1 to 22	NO SPILL.
Turbine Unit Priority	0	per FPP	
Gatewells	0	Weekly	

Current Outages

MU19 & MU20 FOOS 10/07/2018 1205 – 10/27/2022 1700 T10 ACETYLENE

MU12 OOS 04/12/2021 0001 – 9/22/2023 ANNUAL

MU18 OOS 08/29/2022 0630-1/28/2022

MU17 OOS 11/07/2022 0630 – 12/01/2022 1700, TURBINE BRG

MU22 11/14/2022 0630 – 12/08/2022 1700, FALL PROTECTION

F1 OOS 11/26/2022 0630 - 01/26/2023 1700, 2 YEAR

F2 OOS 12/01/2022 0630 - 01/04/2023 0700, ANNUAL

Maintenance

Planning to revive old fish unit intake trashrack rake in anticipation for future debris buildup concerns.

EFL exit weir 155 hoist failed in down position. Weir pull and repair mid December.

Permanent oil boom reinstallation planned for December 13 and 14.

Calibrations not accurate for W2, S2 and E1 fishway entrances. All entrances maintaining criteria.

Spillway assessment (MRER); Spillgates 1- 9 rehab 2034. Includes spillbay 9 trunnion pin repair. Spillway crane first priority

Planning spill gates 9 and 10 cable and gearbox swap. Replacing bulkhead seals needed. Completion estimate end march.

Fish unit rehab Phase 1A awaiting funding.

AWS intake trashrack debris management - PDT reviewing alternatives.

Planning repair of AWS trashrack lift beam for easier use if needed.

AWS backup operation in place of fish unit 1 Nov26-Dec1 for PDT info gathering. East fishladder dewater Dec6.

Fish units and AWS off Dec1. East fishladder dewatering Dec6. No dewater below tailwater.

East fishladder dewatered Dec6. One adult steelhead, 5 juvenile steelhead, 1 juvenile chinook released to river. Twelve larg sturgeon pushed to tailwater. Approximately 800 juvenile pikeminnow released to river. Estimated ~500 died in process. MFR to FPOM.

Predators

Planning removal of bass/walleye/catfish from all dewaterings for gut sample analysis. Aquiring WDFW permits.

Resident cormorants foraging around project, not at east ladder due to deterrents.

Construction/Contractors

[river temperatures-F°](#)

4 peaks counting 4/1-10/31. Video counting will occur through December this year.

Fish Accords Lamprey Passage plan ongoing at 90% due 09/01 DDR junction pool LPS. Investigating mods for entrance and exit weirs.

PTAGIS fishladder data collection at count stations continues

Operations

Ice Trash sluiceway endgate open. Sluiceways 1,8,16 open.

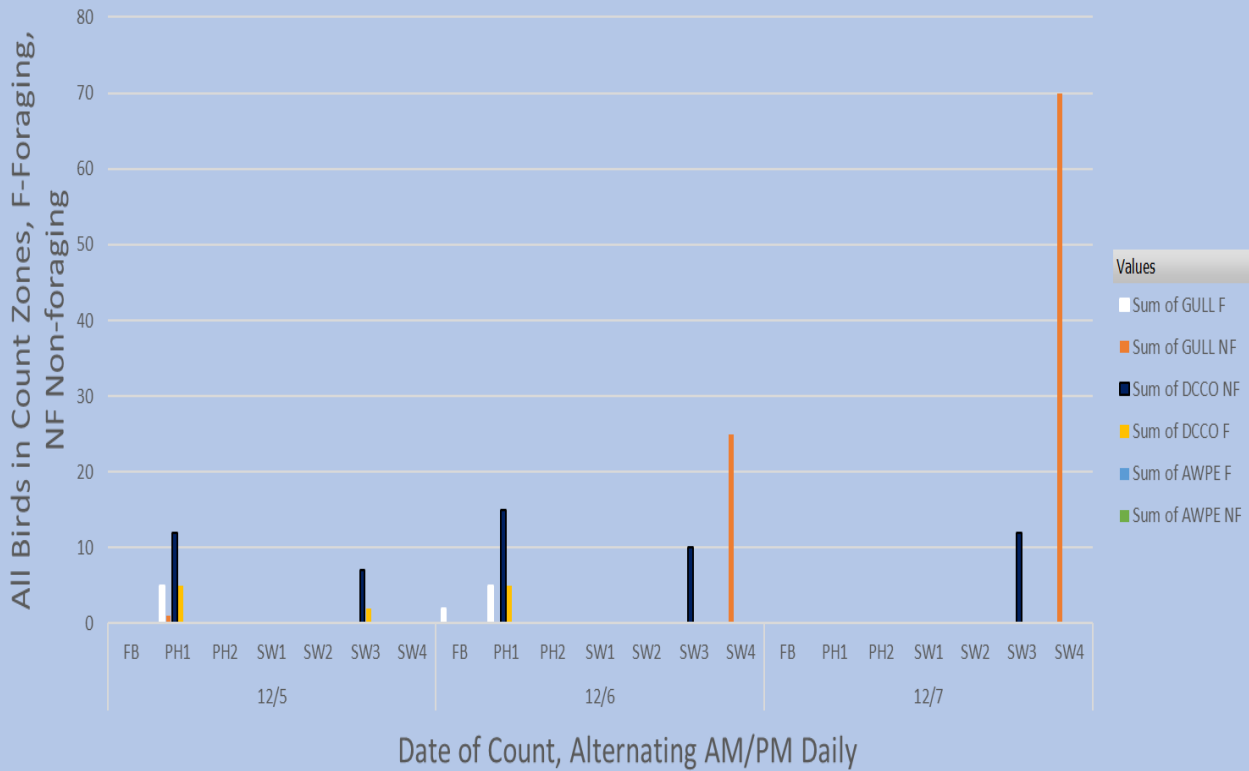
East and North fishways in full service

Approved by: Ron Twiner, Operation Project Manager, The Dalles Dam

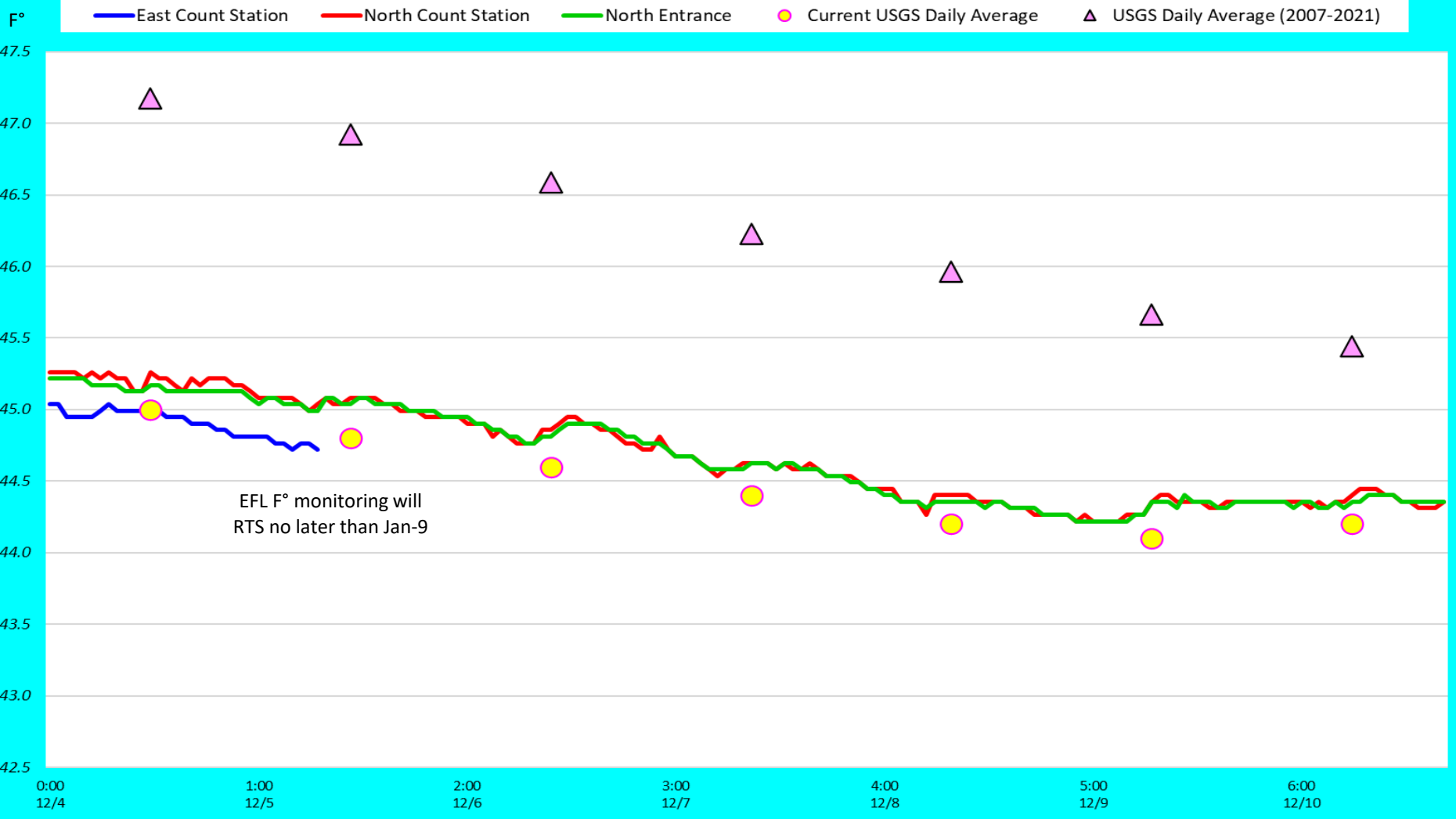
Bird Count Zones, Avian Lines and Laser Deterrent Sites



Avian Count at TDA, 12/5 to 12/7/2022



Adult Fish Ladders-River Temperature



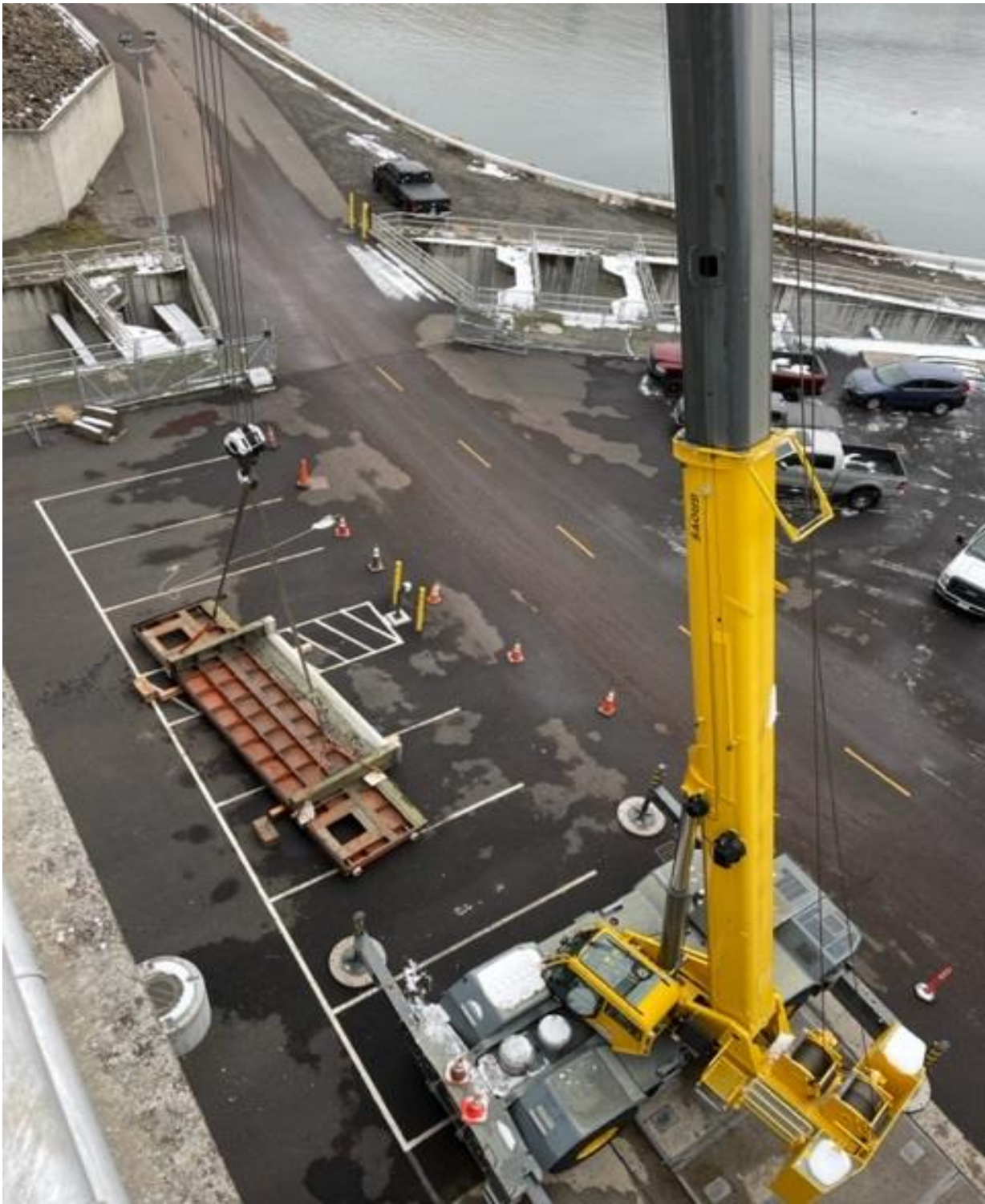
Secchi:		USGS°F
5.0	Sun	45.0
5.0	Mon	44.8
5.0	Tue	44.6
5.0	Wed	44.4
5.0	Thurs	44.2
5.0	Fri	44.1
5.0	Sat	44.2
5.0+	AVG	44.5

Reporting week data

Date:	North Ladder		East Ladder											
			East Entrance					West Entrance			South Entrance			
	Differential	N1 Depth	Differential	E1 Depth	E2 Depth	E3 Depth	JP 6	Differential	W1	W2	W3	Differential	S1	S2
12/4	1.1	9.8	EAST LADDER DEWATERED											
12/5	1.3	9.3												
	1.3	8.8												
12/6	1.1	9.3												
12/7	1.2	9.5												
12/8	1.3	74.0												
12/9	1.4	9.8												
12/10	1.4	9.9												
AVG:	1.3	17.5	#DIV/0!	#DIV/0!	#DIV/0!	#DIV/0!	#DIV/0!	#DIV/0!	#DIV/0!	#DIV/0!	#DIV/0!	#DIV/0!	#DIV/0!	#DIV/0!

Fishways are inspected once daily 12/1/22.

found out of criteria



Working on east exit movable weirs 154 and 155. Repair and lamprey orifice install.