

# The Dalles Dam Fishway Status Report

10/30/22

Inspection Period 10/23-10/29, 2022

## THE DALLES DAM



US Army Corps  
of Engineers  
Portland District

The Dalles Project-Fisheries  
P.O. Box 564  
The Dalles, OR 97058-9998  
Phone: 541-506-3800

<b>The Dalles Dam</b>	<b>Inspections OOC</b>	<b>Criteria Limit</b>	<b>Total Number of Inspections:</b> 14		<b>Temperature:</b> 61.6 °F
			<b>Comments:</b> W155 failure RCC restricted FB		<b>Weekly Ave. Secchi:</b> 5.0

### NORTH FISHWAY

Exit differential	0	≤ 0.5'	
Count station differential	0	≤ 0.3'	
Weir crest depth	0	1.0' ± 0.1'	
Entrance weir N1	0	depth (≥ 8')	Average for the week 9.9
Entrance Differential	0	1.0' - 2.0'	Average for the week 1.4
N2	0	Closed	
PUD Intake differential	0	≤ 0.5'	

### EAST FISHWAY

Exit differential	0	≤ 0.5'	Significant floating mats of weeds at east exit. Not effecting flows or fish passage.	
Removable weirs 154-157	0	Per forebay	Note; 155 weir hoist failed. Forebay restriction minimum 157' applied.	
Weir 158-159 differential	0	1.1' ± 0.1'		
Count station differential	0	≤ 0.3'	Less weed plugging at pickets.	
153 Weir crest depth	0	1.3' ± 0.1'		
Junction pool weir JP6	0	> 7.0'	Weekly average	11.0
East entrance differential	0	1.0' - 2.0'	Weekly average	1.5
Entrance weir E1	0	No criteria	Weekly average	9.2
Entrance weir E2	0	depth (≥ 8')	Weekly average	11.2
Entrance weir E3	0	depth (≥ 8')	Weekly average	11.2
Collection channel velocity	0	1.5 - 4 fps	3.49 fps 10/15	
Transportation channel velocity	0	1.5 - 4 fps	1.7 fps 10/15	
North channel velocity	0	1.5 - 4 fps	3.32 fps 10/15	
South channel velocity	0	1.5 - 4 fps	4.47 fps 10/15	
West entrance differential	0	1.0' - 2.0'	Weekly average	1.3
Entrance weir W1	0	depth (≥ 8')	Weekly average	10.1
Entrance weir W2	0	depth (≥ 8')	Weekly average	10.3
Entrance weir W3	0	No criteria	Weekly average	-2.3
South entrance differential	0	1.0' - 2.0'	Weekly average	1.4
Entrance weir S1	0	depth (≥ 8')	Weekly average	9.8
Entrance weir S2	0	depth (≥ 8')	Weekly average	9.6

### JUVENILE BYPASS

Sluiceway operation	0	Units 1, 8, 18	MU 18 OOS, sluice gate 17-2 in operation
Turbine trashrack drawdown	0	<1.5', biwklly	Monitoring FU drawdown due to weed buildup on intakes. Stable at .5 to .6' on FU2
Spill volume/pattern	0	1 to 22	NO SPILL.
Turbine Unit Priority	0	per FPP	
Gatewells	0	Weekly	Nothing to report. All in Criteria 10/22/22

## Current Outages

MU19 & MU20 FOOS 10/07/2018 1205 – 10/27/2022 1700 T10 ACETYLENE  
MU12 OOS 0001 4/12/2021 – 1700 10/27/2022 for Annual & Cooler Upgrades  
MU18 OOS 08/29/2022 0630-1/26/2023 1700, COOLER UPGRADES  
SS01 OOS 10/03/2022 0630 – 11/3/2022 1700, 2 YEAR  
MU20 OOS 10/03/2022 0630 – 12/29/2022 1700, TOP PLATE OIL SUMP

## Maintenance

Planning to revive old fish unit intake trashrack rake in anticipation for future need.

EFL exit weir 155 hoist failed in down position. Weir pull and repair December. Forebay restriction 157 remainder of passage season.

Permanent oil boom reinstall planned for December.

Calibrations all accurate for fishway entrances. New automation in calibration. All maintaining criteria.

Spillway assessment (MRER); Spillgates 1- 9 rehab 2034. Includes spillbay 9 trunnion pin repair. Spillway crane first priority

Fish unit rehab Phase 1A awaiting funding.

AWS intake trashrack debris management - PDT reviewing alternatives.

Monitoring fish unit intake drawdown for potential trashrack plugging.

Planning repair of AWS trashrack lift beam for easier use if needed.

## Predators

Planning removal of bass/walleye/catfish from all dewaterings for gut sample analysis. Aquiring permits.

Resident cormorants foraging around project. Several consistently at the east fishladder exit.

Northern Pikeminnow Management Program Columbia River Dam Angling & Site-Specific Fishery complete for the year

## Research/Construction/Contractors

USGS river temperatures link

4 peaks counting 4/1-10/31. Video counting will occur through December this year.

Fish Accords Lamprey Passage plan ongoing at 90% due 09/01 DDR junction pool LPS. Investigating mods for entrance and exit weirs.

PTAGIS fishladder data collection at count stations continues

Lamprey translocation project reporting 1065 captures YTD- Traps pulled 9/7 end of season

Zebra mussel sampling completed 8/15. No mussels detected on substrate in ladders. Sampling done for 2022.

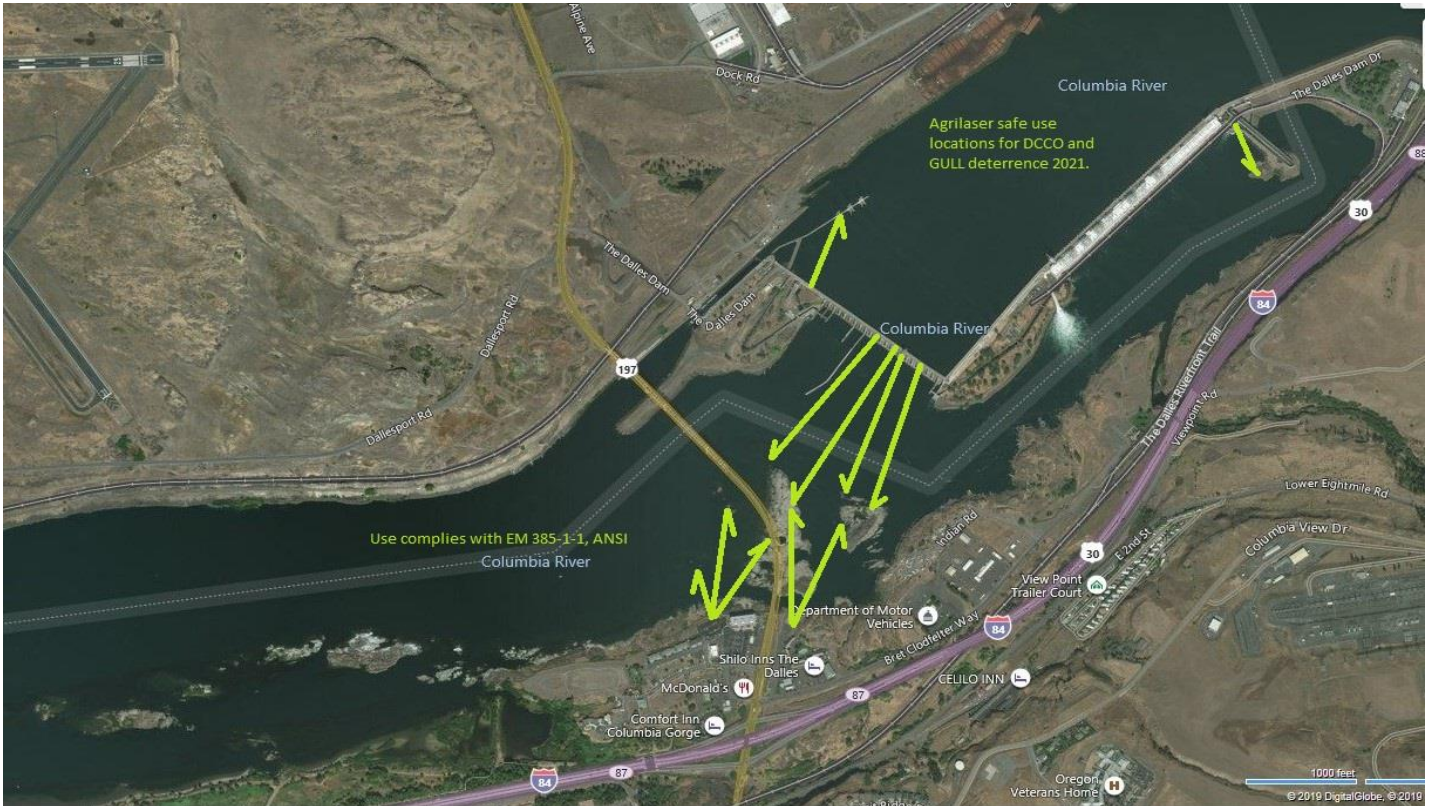
## Operations

Ice Trash sluiceway endgate open. Sluiceways 1,8,17 open.

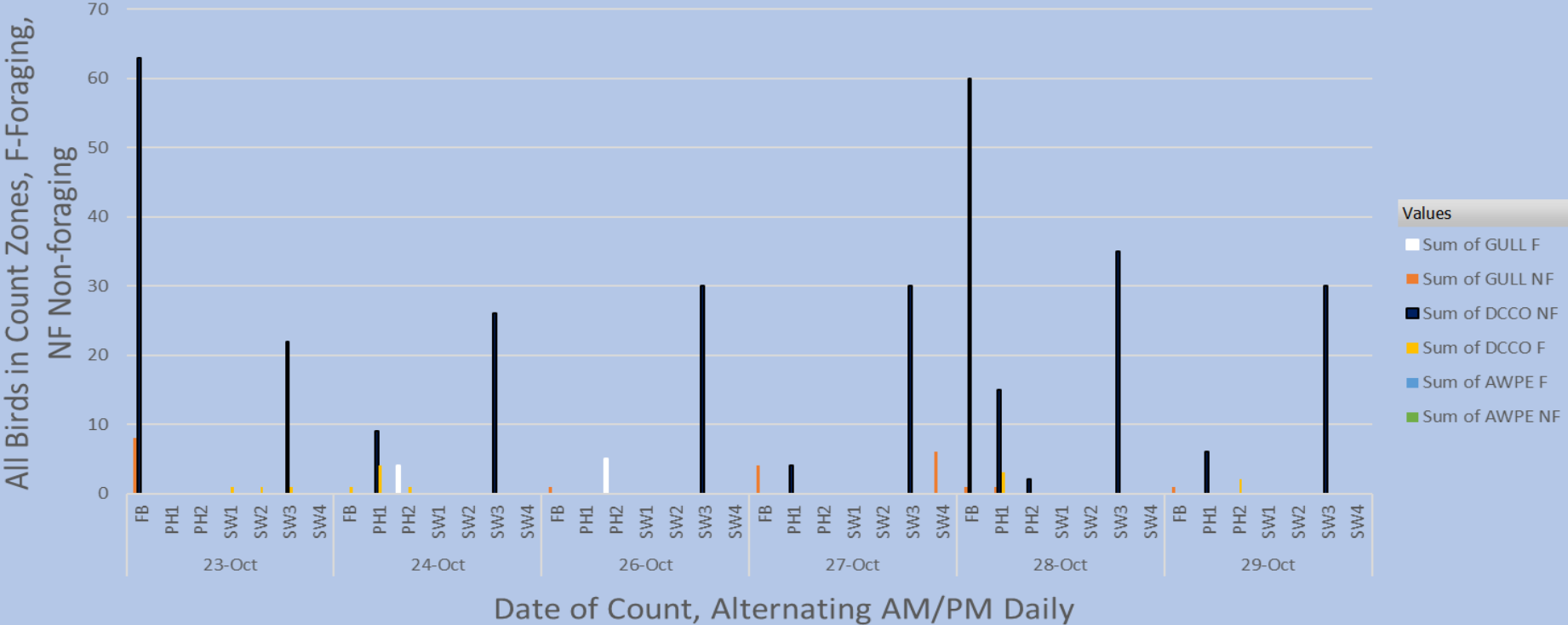
East and North fishways in full service

Approved by: Ron Twiner, Operation Project Manager, The Dalles Dam

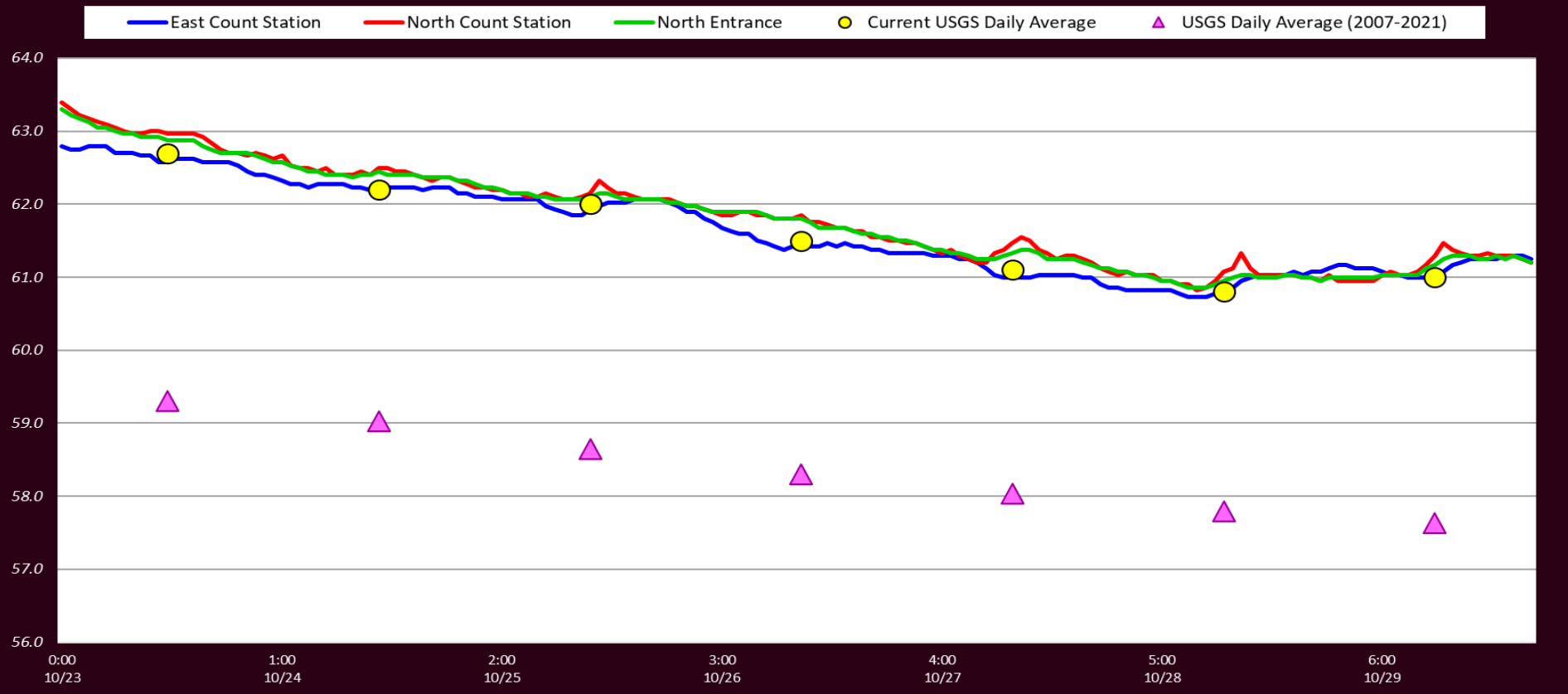
# Bird Count Zones, Avian Lines and Laser Deterrent Sites



### Avian Count at TDA, 10/23 to 10/29/2022



# Adult Fish Ladders-River Temperatures



Secchi:		USGS°F
5.0	Sun	62.7
5.0	Mon	62.2
5.0	Tue	62.0
5.0	Wed	61.5
5.0	Thurs	61.1
5.0	Fri	60.8
5.0	Sat	61.0
5.0	AVG	61.6

Reporting week data

Date:	North Ladder		East Ladder											
			East Entrance					West Entrance			South Entrance			
	Differential	N1 Depth	Differential	E1 Depth	E2 Depth	E3 Depth	JP 6	Differential	W1	W2	W3	Differential	S1	S2
10/23	1.3	9.8	1.3	10.9	11.0	11.1	11.0	1.3	10.2	10.4	-2.3	1.3	10.2	10.0
	1.4	9.6	1.5	9.7	10.7	10.8	10.7	1.3	10.1	10.3	-2.4	1.3	10.0	9.8
10/24	1.4	9.8	1.6	8.7	11.1	11.1	11.2	1.2	10.4	10.6	-1.7	1.3	10.0	9.9
	1.4	9.8	1.4	9.2	11.6	11.8	11.2	1.3	10.2	10.4	-2.1	1.3	9.9	9.8
10/25	1.4	9.8	1.4	9.2	11.5	11.7	11.2	1.3	10.2	10.4	-2.0	1.4	9.8	9.8
	1.5	10.7	1.5	9.0	11.0	11.3	11.0	1.4	9.6	9.9	-2.2	1.5	9.6	9.3
10/26	1.4	9.7	1.4	9.5	11.5	11.8	11.5	1.3	10.5	10.7	-1.8	1.4	9.9	9.8
	1.3	9.9	1.6	8.8	10.9	11.2	10.8	1.3	10.0	10.3	-2.3	1.4	9.5	9.2
10/27	1.3	9.8	1.4	8.9	11.2	11.5	10.9	1.3	10.0	10.2	-2.3	1.4	9.6	9.5
	1.3	9.9	1.6	8.6	10.8	11.2	10.6	1.5	9.5	9.7	-2.8	1.5	9.3	9.3
10/28	1.4	9.8	1.5	8.7	11.2	11.5	10.7	1.3	10.0	10.3	-2.5	1.5	9.6	9.5
	1.3	10.6	1.3	9.3	11.8	12.1	11.3	1.2	10.5	10.8	-2.1	1.3	10.2	9.9
10/29	1.4	9.8	1.5	9.0	11.1	11.4	11.0	1.4	10.0	10.2	-2.4	1.4	9.6	9.5
	1.4	10.0	1.5	9.0	11.1	11.4	11.1	1.5	10.0	10.2	-2.6	1.4	9.6	9.5
<b>AVG:</b>	<b>1.4</b>	<b>9.9</b>	<b>1.5</b>	<b>9.2</b>	<b>11.2</b>	<b>11.4</b>	<b>11.0</b>	<b>1.3</b>	<b>10.1</b>	<b>10.3</b>	<b>-2.3</b>	<b>1.4</b>	<b>9.8</b>	<b>9.6</b>

*Fishways are inspected twice daily.*

found out of criteria