

The Dalles Dam Fishway Status Report

9/28/22

Inspection Period 9/25-10/1, 2022

THE DALLES DAM



US Army Corps
of Engineers
Portland District

The Dalles Project-Fisheries
P.O. Box 564
The Dalles, OR 97058-9998
Phone: 541-506-3800

The Dalles Dam	Inspections OOC	Criteria Limit	Total Number of Inspections: 14		Temperature: 67.2 °F
			Comments: W155 failure RCC restricted FB		Weekly Ave. Secchi: 5.0

NORTH FISHWAY

Exit differential	0	≤ 0.5'			
Count station differential	0	≤ 0.3'			
Weir crest depth	0	1.0' ± 0.1'			
Entrance weir N1	0	depth (≥ 8')	Average for the week	9.7	
Entrance Differential	0	1.0' - 2.0'	Average for the week	1.3	
N2	0	Closed			
PUD Intake differential	1	≤ 0.5'	PUD handling raking as significant weed buildup is occurring.		

EAST FISHWAY

Exit differential	0	≤ 0.5'			
Removable weirs 154-157	0	Per forebay	Note; 155 weir hoist failed. Forebay restriction minimum 157' applied.		
Weir 158-159 differential	2	1.1' ± 0.1'	Some issues with low fall flows?		
Count station differential	0	≤ 0.3'	Count station pickets plugging, less milfoil, more grass, requiring raking to restore differential.		
153 Weir crest depth	0	1.3' ± 0.1'			
Junction pool weir JP6	0	> 7.0'	Weekly average	10.2	
East entrance differential	0	1.0' - 2.0'	Weekly average	1.5	
Entrance weir E1	0	No criteria	Weekly average	5.7	
Entrance weir E2	0	depth (≥ 8')	Weekly average	11.9	
Entrance weir E3	0	depth (≥ 8')	Weekly average	11.9	
Collection channel velocity	0	1.5 - 4 fps	3.28fps 9/17		
Transportation channel velocity	0	1.5 - 4 fps	1.76fps 9/17		
North channel velocity	0	1.5 - 4 fps	3.07fps 9/17		
South channel velocity	0	1.5 - 4 fps	4.61fps 9/17		
West entrance differential	0	1.0' - 2.0'	Weekly average	1.4	
Entrance weir W1	0	depth (≥ 8')	Weekly average	9.7	
Entrance weir W2	0	depth (≥ 8')	Weekly average	9.7	
Entrance weir W3	0	No criteria	Weekly average	-3.1	
South entrance differential	0	1.0' - 2.0'	Weekly average	1.4	
Entrance weir S1	0	depth (≥ 8')	Weekly average	9.3	
Entrance weir S2	0	depth (≥ 8')	Weekly average	9.3	

JUVENILE BYPASS

Sluiceway operation	0	Units 1, 8, 18	MU 18 OOS, sluice gate 17-2 in operation		
Turbine trashrack drawdown	0	<1.5', biwklly	Monitoring FU drawdown due to weed buildup on intakes. Stable at .5 to .6' on FU2		
Spill volume/pattern	0	1 to 22	NO SPILL.		
Turbine Unit Priority	0	per FPP			
Gatewells	0	Weekly	Few dead shad adults. Nothing else to report.		

Current Outages

T11 OOS 09/12/2022 0630 – 09/22/2022 1700, 2 YEAR
MU12 OOS 0001 4/12/2021 – 1700 10/27/2022 for Annual & Cooler Upgrades
MU18 OOS 08/29/2022 0630-1/26/2023 1700, COOLER UPGRADES
MU19 OOS 09/12/2022 0630-9/22/2022 1700, COOLER UPGRADES
MU19 & MU20 FOOS 10/07/2018 1205 – 10/27/2022 1700 T10 ACETYLENE
MU21-22 OOS 09/12/2022 0630 – 09/22/2022 1700, ANNUAL/ ROLLING OUTAGE RELAY ADJUSTMENTS

Maintenance

EFL exit weir 155 hoist failed in down position. Gearbox tested OK. Weir pull and repair this winter. Forebay restriction 157.
Permanent oil boom reinstall planned for this winter. Plan to extend to cover AWS intake. May include design for debris deflection.
Calibrations excellent on all fishway entrances. New automation in calibration. All maintaining criteria.
Spillway assessment (MRER); Spillgates 1- 9 rehab 2034. Includes spillbay 9 trunnion pin repair. Spillway crane first priority
Fish unit rehab Phase 1A awaiting funding.
AWS intake trashrack debris management - PDT reviewing alternatives.
Monitoring fish unit intake drawdown for potential trashrack plugging.

Predators

Planning removal of bass/walleye/catfish from all dewaterings for gut sample analysis. Inquiring for permits.
One pelican briefly on project and Three Mile Creek area.
Northern Pikeminnow Management Program Columbia River Dam Angling & Site-Specific Fishery with 617 removed YTD

Research/Construction/Contractors

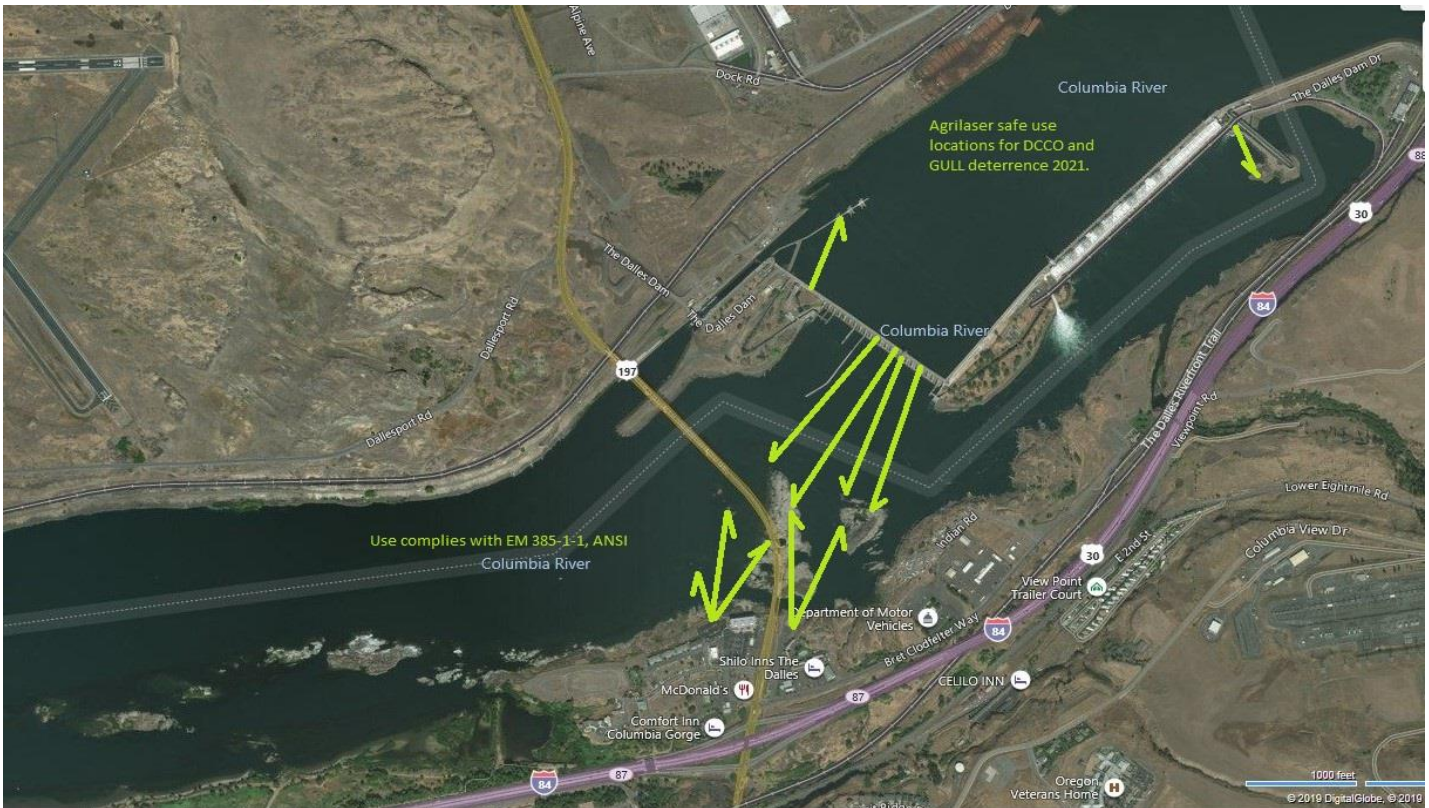
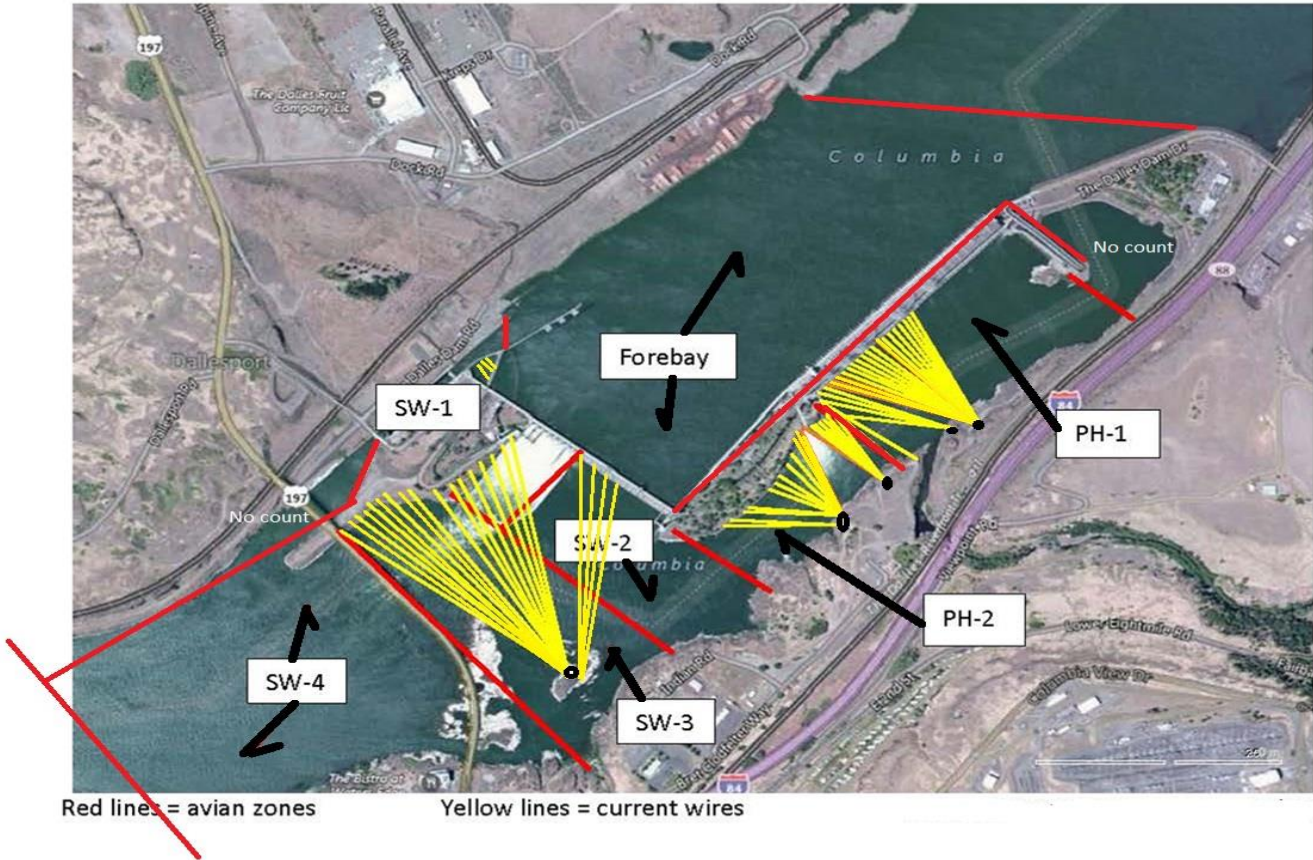
USGS river temperatures link
4 peaks counting 4/1-10/31. Video counting will occur through December this year.
Fish Accords Lamprey Passage plan ongoing at 90% due 09/01 DDR junction pool LPS. Investigating mods for entrance and exit weirs.
PTAGIS fishladder data collection at count stations continues
Lamprey translocation project reporting 1065 captures YTD- Traps pulled 9/7 end of season
Zebra mussel sampling completed 8/15. No mussels detected on substrate in ladders.

Operations

Ice Trash sluiceway endgate open. Sluiceways 1,8,17 open.
East and North fishways in full service

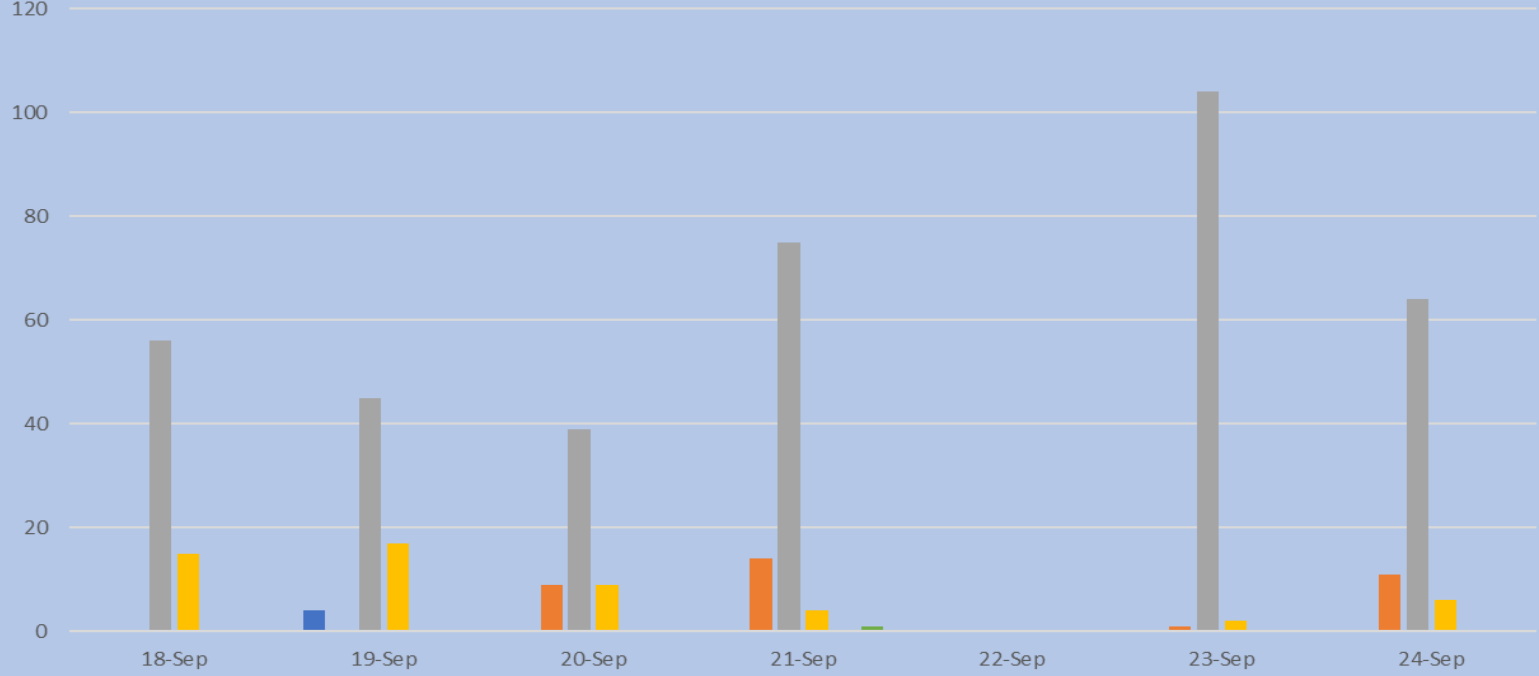
Approved by: Ron Twiner, Operation Project Manager, The Dalles Dam

Bird Count Zones, Avian Lines and Laser Deterrent Sites



Avian Count at TDA, 9/18 to 9/24/2022

All Birds in Count Zones, F-Foraging,
NF Non-foraging



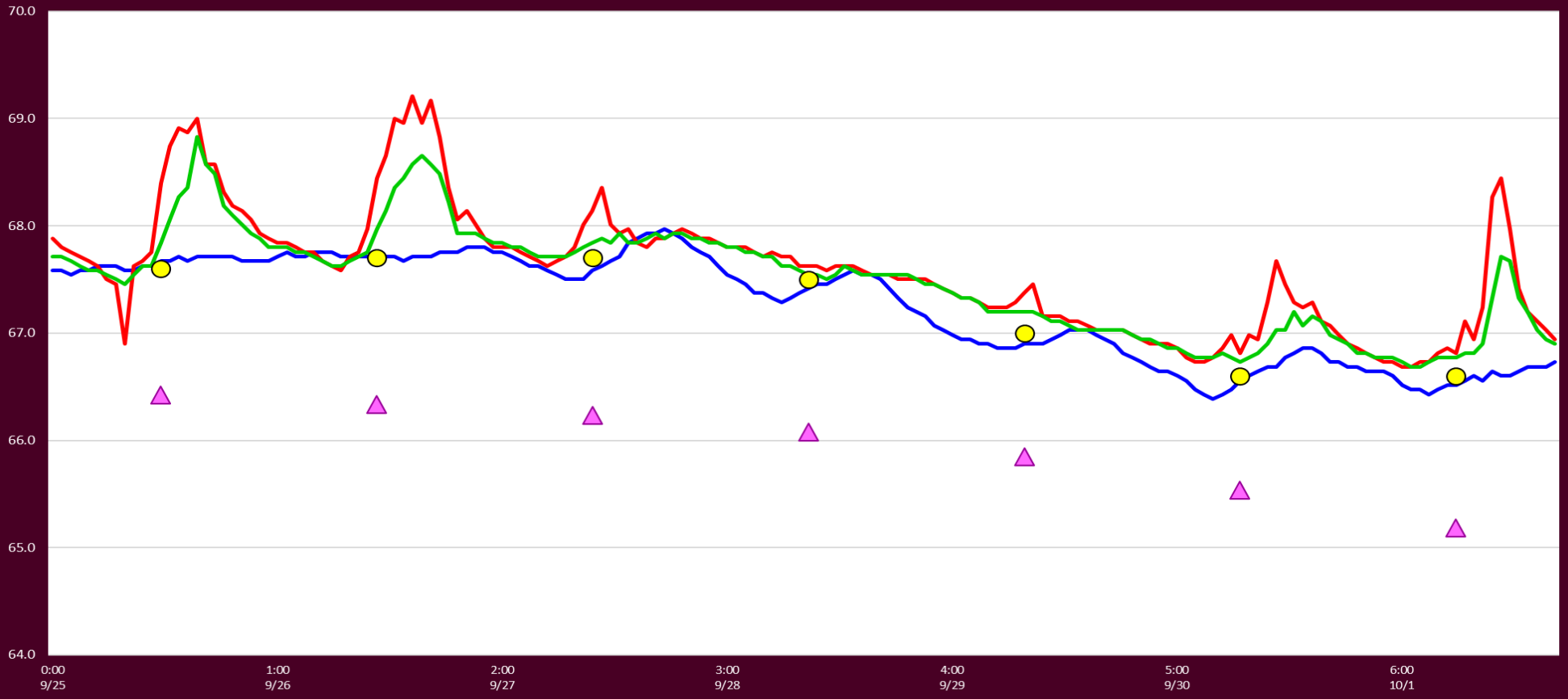
- Values
- Sum of GULL F
 - Sum of GULL NF
 - Sum of DCCO NF
 - Sum of DCCO F
 - Sum of AWPE F
 - Sum of AWPE NF

Date of Count, Alternating AM/PM Daily



Adult Fish Ladders-River Temperatures

— East Count Station — North Count Station — North Entrance ● Current USGS Daily Average ▲ USGS Daily Average (2007-2021)



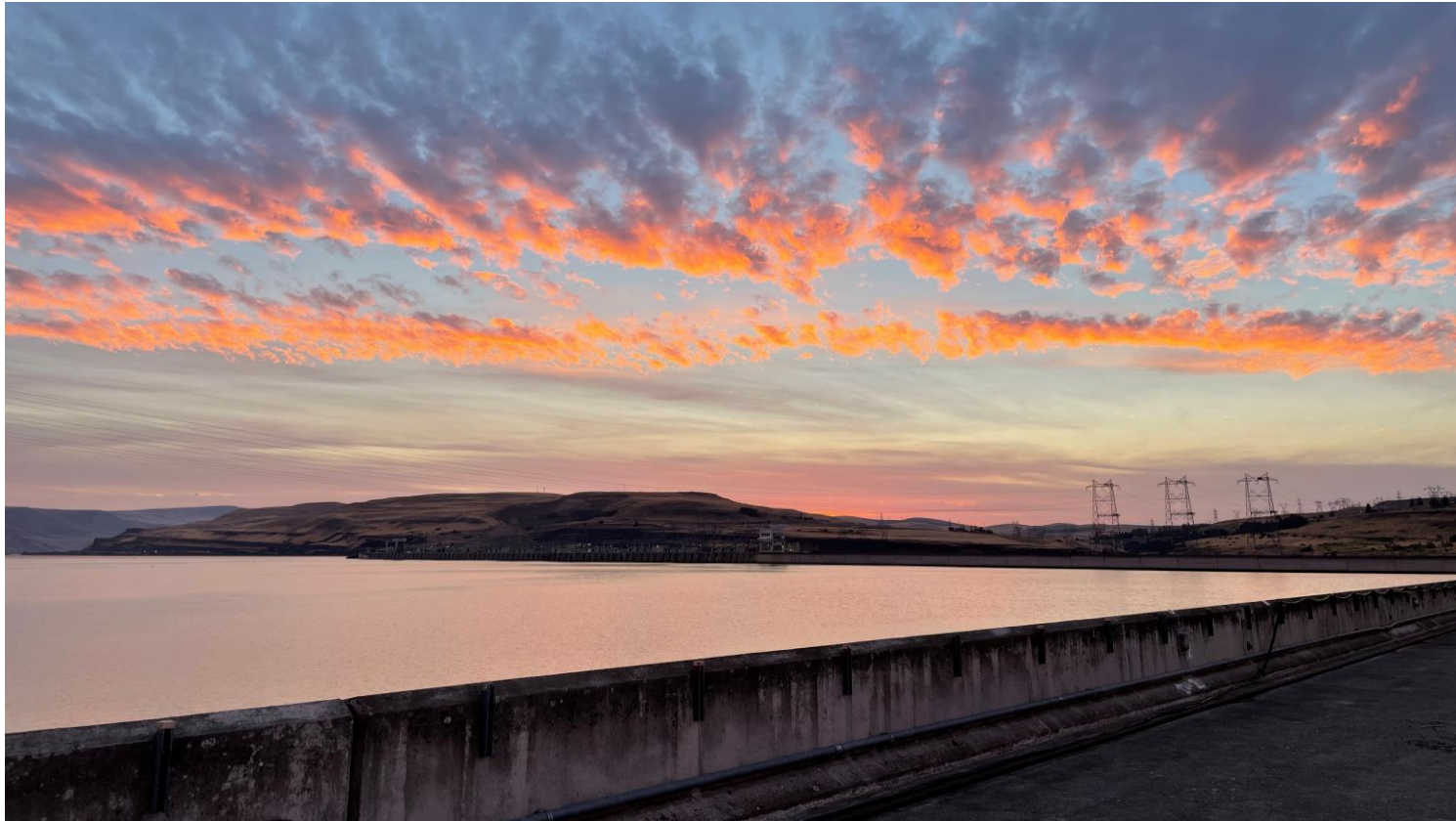
Secchi:		USGS°F
5.0	Sun	67.6
5.0	Mon	67.7
5.0	Tue	67.7
5.0	Wed	67.5
5.0	Thurs	67.0
5.0	Fri	66.6
5.0	Sat	66.6
5.0	AVG	67.2

Reporting week data

Date:	North Ladder		East Ladder											
			East Entrance					West Entrance			South Entrance			
	Differential	N1 Depth	Differential	E1 Depth	E2 Depth	E3 Depth	JP 6	Differential	W1	W2	W3	Differential	S1	S2
9/25	1.3	9.7	1.4	4.9	12.5	12.5	10.4	1.4	9.8	9.8	-2.8	1.4	9.4	9.4
	1.3	9.6	1.5	4.7	12.3	12.3	10.3	1.5	9.6	9.6	-3.0	1.5	9.4	9.2
9/26	1.3	9.7	1.5	4.8	12.3	12.3	10.4	1.5	9.8	9.8	-2.9	1.4	9.4	9.3
	1.3	9.8	1.3	5.4	12.6	12.5	11.0	1.3	10.2	10.2	-2.5	1.4	9.8	9.7
9/27	1.2	9.7	1.5	4.3	12.4	12.5	10.3	1.4	9.7	9.7	-2.9	1.2	9.3	9.3
	1.3	9.8	1.4	6.4	12.4	12.1	11.0	1.4	9.9	9.9	-2.3	1.4	10.0	10.8
9/28	1.2	9.9	1.5	6.1	11.9	12.0	10.7	1.5	9.5	9.5	-2.6	1.5	9.4	9.4
	1.3	9.8	1.4	6.6	12.0	12.1	11.2	1.3	10.0	9.9	-2.3	1.4	9.8	9.7
9/29	1.3	9.8	1.5	5.3	11.8	12.1	9.9	1.4	9.8	9.9	-3.3	1.5	9.2	9.2
	1.3	9.6	1.3	5.9	12.3	12.6	10.5	1.3	10.4	10.5	-2.3	1.4	10.0	9.9
9/30	1.4	9.5	1.5	5.3	11.6	11.9	9.9	1.5	9.6	8.7	-3.3	1.5	9.0	9.0
	1.4	9.6	1.6	6.8	11.2	11.6	9.6	1.5	9.3	9.3	-3.7	1.5	8.8	8.7
10/1	1.4	9.7	1.6	7.0	10.7	11.2	8.7	1.6	9.0	9.1	-4.6	1.5	8.3	8.2
	1.5	9.5	1.6	6.9	10.6	11.1	8.6	1.6	9.1	9.2	-4.7	1.5	8.3	8.4
AVG:	1.3	9.7	1.5	5.7	11.9	12.0	10.2	1.4	9.7	9.7	-3.1	1.4	9.3	9.3

Fishways are inspected twice daily.

found out of criteria



Sunrise