

The Dalles Dam Fishway Status Report

9/18/22

Inspection Period 9/11-9/17, 2022

THE DALLES DAM



The Dalles Project-Fisheries
P.O. Box 564
The Dalles, OR 97058-9998
Phone: 541-506-3800

The Dalles Dam	Inspections OOC	Criteria Limit	Total Number of Inspections: 14		Temperature: 70.1 °F
			Comments: W155 failure RCC restricted FB		Weekly Ave. Secchi: 5.0

NORTH FISHWAY

Exit differential	0	≤ 0.5'			
Count station differential	0	≤ 0.3'			
Weir crest depth	0	1.0' ± 0.1'			
Entrance weir N1	0	depth (≥ 8')		9.6	
Entrance Differential	0		1.0' - 2.0'		1.3
N2	0	Closed			
PUD Intake differential	0	≤ 0.5'			

EAST FISHWAY

Exit differential	0	≤ 0.5'			
Removable weirs 154-157	0	Per forebay	Note; 155 weir hoist failed. Forebay restriction minimum 157' applied.		
Weir 158-159 differential	0	1.1' ± 0.1'			
Count station differential	0	≤ 0.3'	Count station pickets plugging up with weeds requiring frequent raking to restore differential.		
153 Weir crest depth	0	1.3' ± 0.1'			
Junction pool weir JP6	0	> 7.0'	Weekly average	10.2	
East entrance differential	0	1.0' - 2.0'	Weekly average	1.5	
Entrance weir E1	0	No criteria	Weekly average	10.7	
Entrance weir E2	0	depth (≥ 8')	Weekly average	9.7	
Entrance weir E3	0	depth (≥ 8')	Weekly average	9.7	
Collection channel velocity	0	1.5 - 4 fps	3.28fps 9/17		
Transportation channel velocity	0	1.5 - 4 fps	1.76fps 9/17		
North channel velocity	0	1.5 - 4 fps	3.07fps 9/17		
South channel velocity	0	1.5 - 4 fps	4.61fps 9/17		
West entrance differential	0	1.0' - 2.0'	Weekly average	1.4	
Entrance weir W1	0	depth (≥ 8')	Weekly average	9.7	
Entrance weir W2	0	depth (≥ 8')	Weekly average	10.0	
Entrance weir W3	0	No criteria	Weekly average	-3.1	
South entrance differential	0	1.0' - 2.0'	Weekly average	1.4	
Entrance weir S1	0	depth (≥ 8')	Weekly average	9.3	
Entrance weir S2	0	depth (≥ 8')	Weekly average	9.5	

JUVENILE BYPASS

Sluiceway operation	0	Units 1, 8, 18	MU 18 OOS, sluice gate 17-2 in operation		
Turbine trashrack drawdown	0	<1.5', biwkly			
Spill volume/pattern	0	1 to 22			
Turbine Unit Priority	0	per FPP			
Gatewells	0	Weekly			

Current Outages

T11 OOS 09/12/2022 0630 – 09/22/2022 1700, 2 YEAR
MU12 OOS 0001 4/12/2021 – 1700 10/27/2022 for Annual & Cooler Upgrades
MU18 OOS 08/29/2022 0630-1/26/2023 1700, COOLER UPGRADES
MU19 OOS 09/12/2022 0630-9/22/2022 1700, COOLER UPGRADES
MU19 & MU20 FOOS 10/07/2018 1205 – 10/27/2022 1700 T10 ACETYLENE
MU21-22 OOS 09/12/2022 0630 – 09/22/2022 1700, ANNUAL/ ROLLING OUTAGE RELAY ADJUSTMENTS

Maintenance

East fishladder weir 155 hoist failed in down position. Gearbox tested OK. Weir pull and repair this winter. Forebay restriction 157.
Permanent oil boom reinstall planned for this winter. Plan to extend to cover AWS intake.
Calibrations on east fishway entrances. S-1 and S-2, E-1" out of calibration. All in criteria.
Spillway assessment (MRER); Spillgates 1- 9 rehab 2034. Includes spillbay 9 trunnion pin repair. Spillway crane first priority
Fish unit rehab Phase 1A awaiting funding.
AWS intake trashrack debris management - PDT reviewing alternatives.
Monitoring fish unit intake drawdown for potential trashrack plugging.

Predators

Planning removal of bass/walleye/catfish from all dewaterings for gut sample analysis.
Large numbers of pelicans departed project and Three Mile Creek area.
Northern Pikeminnow Management Program Columbia River Dam Angling & Site-Specific Fishery with 608 removed YTD

Research/Construction/Contractors

[USGS river temperatures link](#) [September](#)

4 peaks counting 4/1-10/31

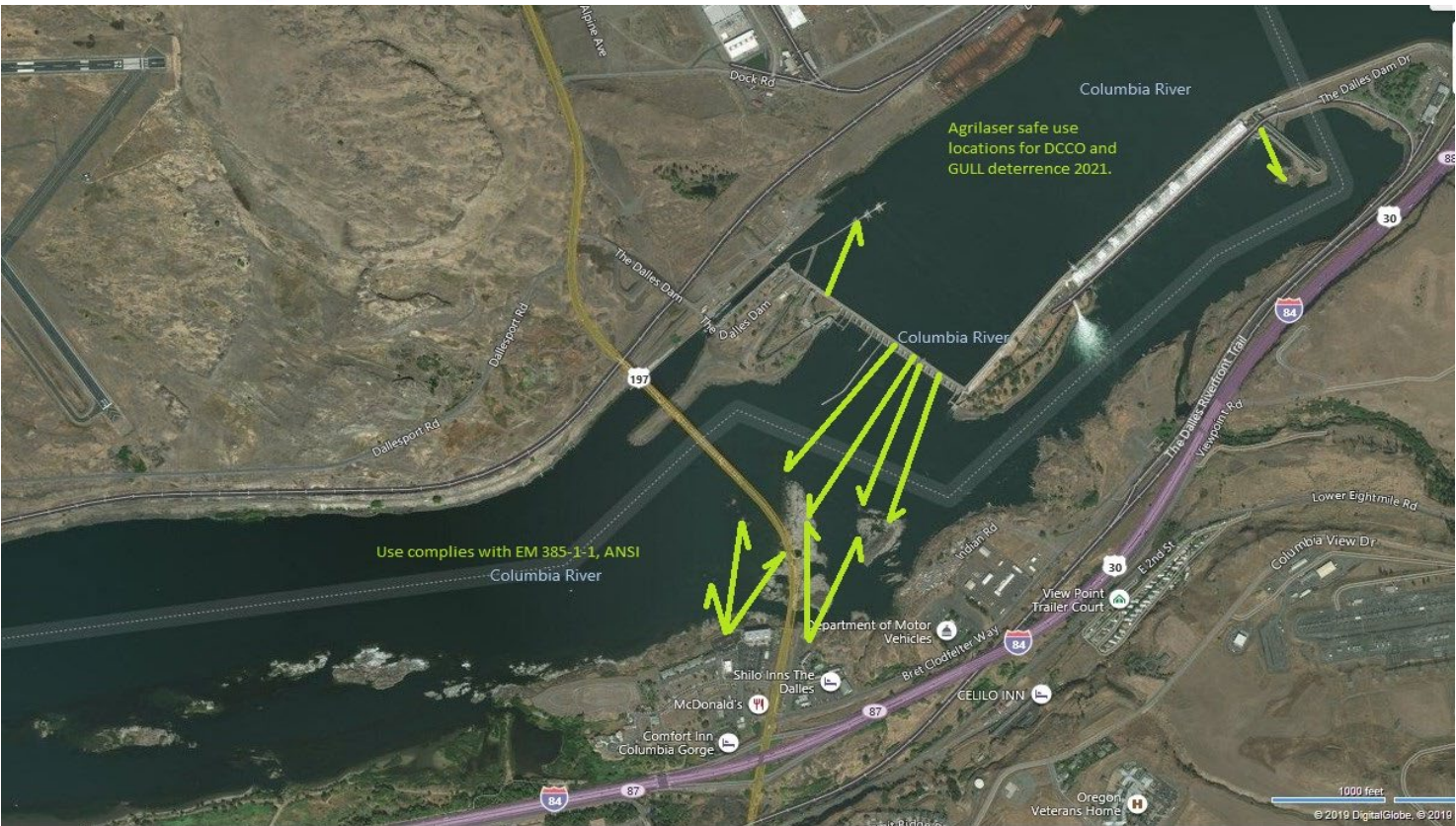
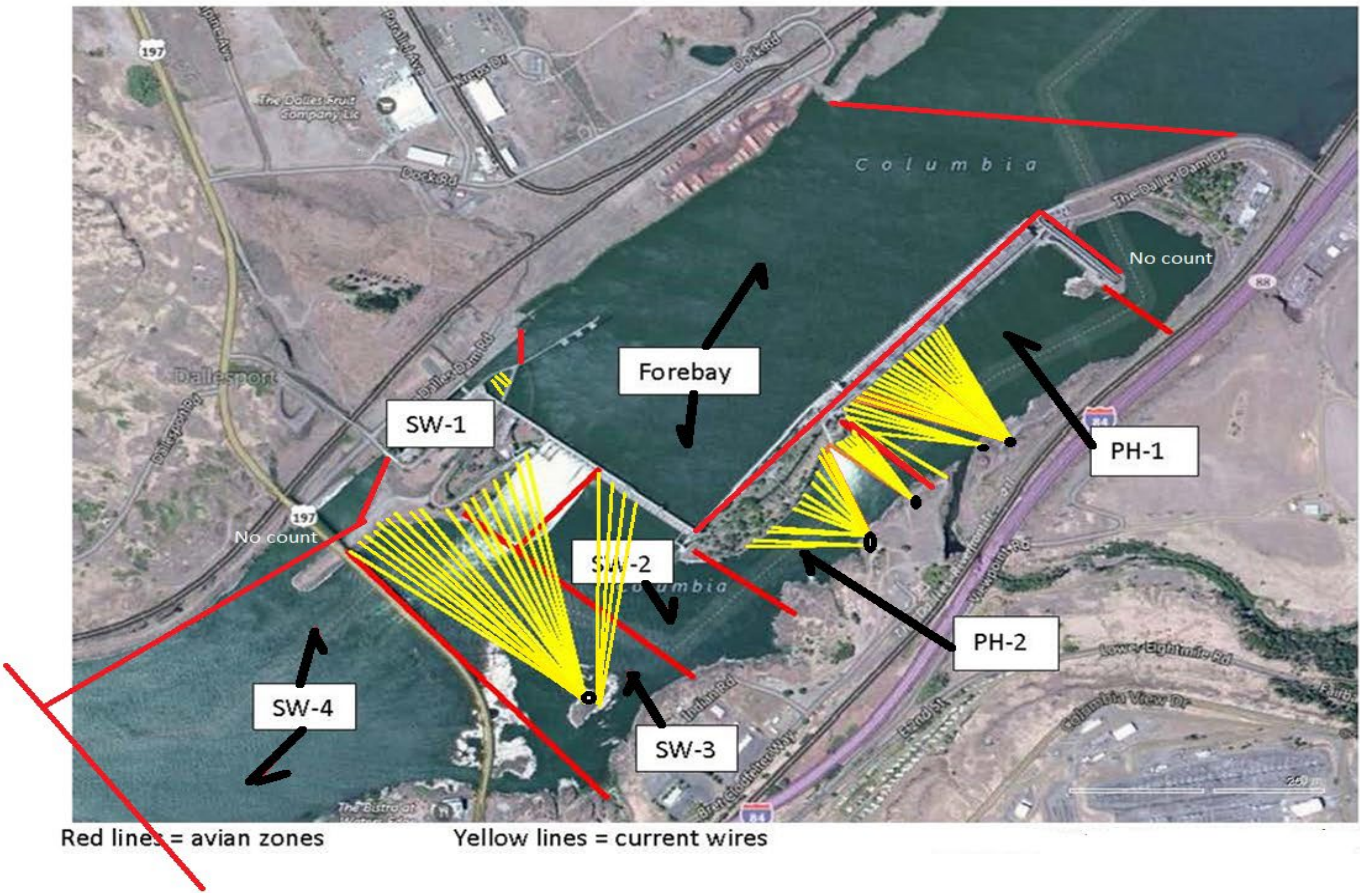
Fish Accords Lamprey Passage plan ongoing at 90% due 09/01 DDR junction pool LPS. Investigating mods for entrance and exit weirs.
PTAGIS fishladder data collection at count stations continues
Lamprey translocation project reporting 1065 captures YTD- Traps pulled 9/7 end of season
Zebra mussel sampling completed 8/15. No mussels detected on substrate in ladders.

Operations

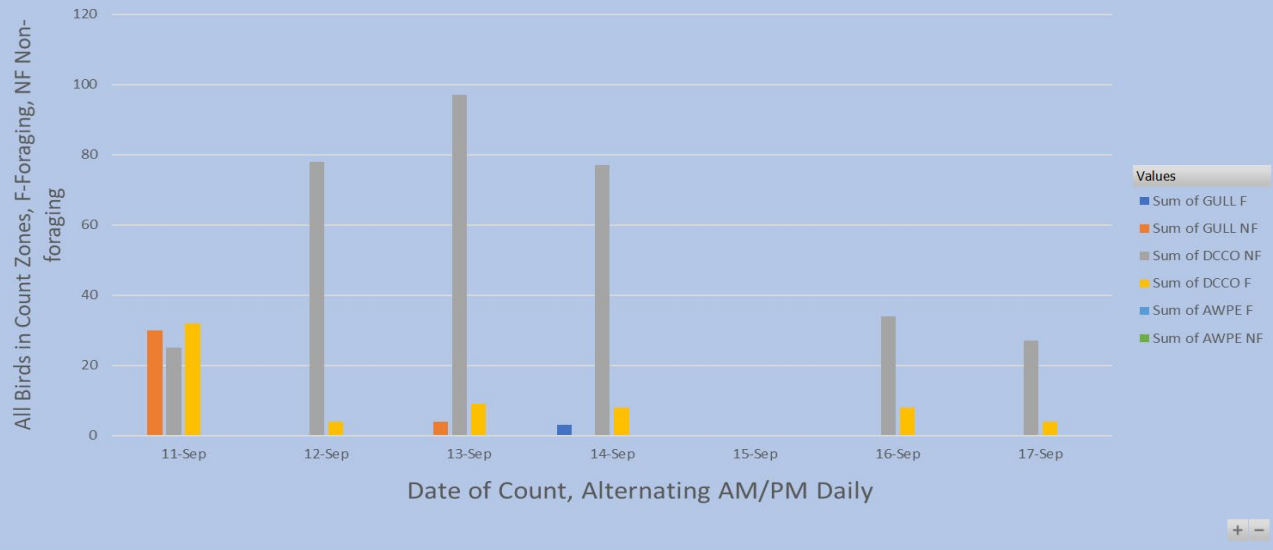
Ice Trash sluiceway endgate open. Sluiceways 1,8,17 open per FPP.
East and North fishways in full service

Approved by: Ron Twiner, Operation Project Manager, The Dalles Dam

Bird Count Zones, Avian Lines and Laser Deterrent Sites

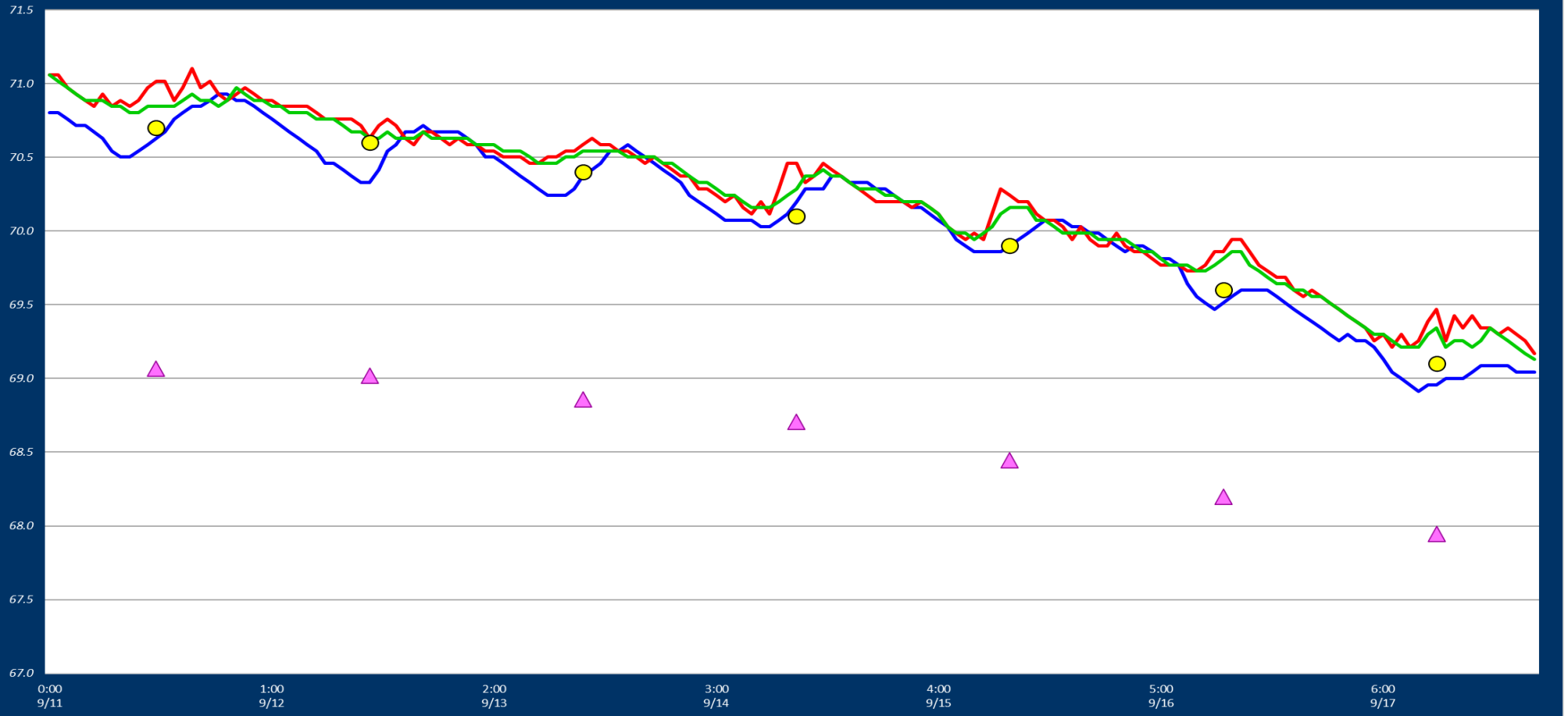


Avian Count at TDA, 9/11 to 9/17/2022



Adult Fish Ladders-River Temperatures

— East Count Station — North Count Station — North Entrance ● Current USGS Daily Average ▲ USGS Daily Average (2007-2021)



Secchi:		USGS°F
5.0	Sun	70.7
5.0	Mon	70.6
5.0	Tue	70.4
5.0	Wed	70.1
5.0	Thurs	69.9
5.0	Fri	69.6
5.0	Sat	69.1
5.0	AVG	70.1

Reporting week data

Date:	North Ladder		East Ladder											
			East Entrance					West Entrance			South Entrance			
	Differential	N1 Depth	Differential	E1 Depth	E2 Depth	E3 Depth	JP 6	Differential	W1	W2	W3	Differential	S1	S2
9/11	1.5	9.6	1.5	10.1	9.6	10.5	9.6	1.5	9.3	10.0	-3.7	1.5	8.8	9.0
	1.4	9.7	1.6	10.0	9.5	10.4	9.4	1.5	9.2	9.8	-3.9	1.5	8.9	8.9
9/12	1.2	9.6	1.3	10.6	10.0	10.7	10.1	1.5	9.6	9.8	-3.4	1.4	9.0	9.2
	1.2	9.7	1.4	11.0	9.9	10.8	10.5	1.4	9.6	10.3	-3.0	1.4	9.6	9.7
9/13	1.4	9.7	1.4	11.0	9.7	10.7	10.4	1.4	9.7	10.4	-2.8	1.4	9.8	9.9
	1.3	9.8	1.4	11.6	9.9	10.8	11.1	1.4	10.1	10.1	-2.3	1.2	10.2	10.2
9/14	1.3	9.6	1.6	10.4	9.3	10.4	9.8	1.4	9.5	9.5	-3.3	1.5	9.0	9.2
	1.2	9.7	1.4	11.0	9.8	10.9	10.4	1.4	9.9	10.0	-2.9	1.5	9.0	9.3
9/15	1.3	9.8	1.5	10.6	9.5	10.6	10.1	1.5	9.6	9.7	-3.2	1.4	9.3	9.3
	1.3	9.5	1.5	10.8	9.7	10.8	10.3	1.4	9.8	9.9	-3.0	1.5	9.4	9.5
9/16	1.4	8.7	1.5	10.4	9.7	10.9	9.8	1.4	9.7	9.7	-3.4	1.5	9.2	9.3
	1.4	9.6	1.4	10.5	9.8	11.0	9.9	1.4	9.7	9.8	-3.3	1.5	9.3	9.3
9/17	1.5	9.4	1.5	10.7	9.8	11.0	10.1	1.4	9.9	10.0	-3.1	1.4	9.5	9.6
	1.3	9.6	1.4	11.1	10.2	11.3	10.5	1.2	10.3	10.4	-2.8	1.3	9.9	9.9
AVG:	1.3	9.6	1.5	10.7	9.7	10.8	10.2	1.4	9.7	10.0	-3.1	1.4	9.3	9.5

Fishways are inspected twice daily.

found out of criteria

