

The Dalles Dam Fishway Status Report

8/20/22

Inspection Period 8/14-8/20 2022

THE DALLES DAM



US Army Corps
of Engineers
Portland District

The Dalles Project-Fisheries
P.O. Box 564
The Dalles, OR 97058-9998
Phone: 541-506-3800

The Dalles Dam	Inspections OOC	Criteria Limit	Total Number of Inspections: 14		Temperature: 71.4 °F
			Comments: W155 failure RCC restricted FB		Weekly Ave. Secchi: 5.1

NORTH FISHWAY

Exit differential	0	≤ 0.5'			
Count station differential	0	≤ 0.3'			
Weir crest depth	0	1.0' ± 0.1'			
Entrance weir N1	0	depth (≥ 8')		10.2	
Entrance Differential	0	1.0' - 2.0'		1.2	
N2	0	Closed			
PUD Intake differential	0	≤ 0.5'			

EAST FISHWAY

Exit differential	0	≤ 0.5'			
Removable weirs 154-157	0	Per forebay	Note; 155 weir hoist failed. Forebay restriction minimum 157' applied.		
Weir 158-159 differential	0	1.1' ± 0.1'			
Count station differential	0	≤ 0.3'	Count station pickets plugging up with weeds requiring frequent raking to restore differential.		
153 Weir crest depth	0	1.3' ± 0.1'			
Junction pool weir JP6	0	> 7.0'	Weekly average	11.5	
East entrance differential	0	1.0' - 2.0'	Weekly average	1.5	
Entrance weir E1	0	No criteria	Weekly average	8.6	
Entrance weir E2	0	depth (≥ 8')	Weekly average	11.2	
Entrance weir E3	0	depth (≥ 8')	Weekly average	11.2	
Collection channel velocity	0	1.5 - 4 fps	1.82fps 8/20		
Transportation channel velocity	0	1.5 - 4 fps	4.04fps 8/20		
North channel velocity	0	1.5 - 4 fps	3.21fps 8/20		
South channel velocity	0	1.5 - 4 fps	4.69fps 8/20		
West entrance differential	0	1.0' - 2.0'	Weekly average	1.4	
Entrance weir W1	0	depth (≥ 8')	Weekly average	9.9	
Entrance weir W2	0	depth (≥ 8')	Weekly average	10.0	
Entrance weir W3	0	No criteria	Weekly average	-1.6	
South entrance differential	0	1.0' - 2.0'	Weekly average	1.4	
Entrance weir S1	0	depth (≥ 8')	Weekly average	10.0	
Entrance weir S2	0	depth (≥ 8')	Weekly average	9.9	Problem with gate S2 TR to TDE, unresolved.

JUVENILE BYPASS

Sluicelgate operation	0	Units 1, 8, 18	Pattern per FPP.		
Turbine trashrack drawdown	0	<1.5', biwklly	8/10/22 All MUs in criteria FUs being monitored for differential.		
Spill volume/pattern	0	1 to 22	Pattern per FPP according to volume.		
Turbine Unit Priority	0	per FPP			
Gatewells	0	Weekly	8/10/22, live adult shad observed in many gatewells. Some shad mortality.		

Current Outages

T10 (MU19 & 20) FOOS through 10/27/2022 due to acetylene levels
MU12 OOS 0001 4/12/2021 – 1700 10/27/2022 for Annual & Cooler Upgrades
MU14 OOS 07/18/2022 0811 - 08/25/2022 1700, 6YEAR
MU13 OOS 08/15/2022 0630 – 08/25/2022 1230, OPTIC J-BOX OIL LEAK ON BANK T7
9 of 23 spillgates out of service for various maintenance needs

Maintenance

East fishladder weir 155 hoist failed. Weir in down position. Starting deassemble. Return to service Jan 2023, Forebay restriction 157.
Permanent oil boom reinstall planned for April was postponed until this winter. Plan to extend to cover AWS intake.
Calibrations on east fishway entrances. E-1" out of calibration. All in criteria.
Spillway assessment (MRER); Spillgates 1- 9 rehab 2034. Includes spillbay 9 trunnion pin repair. Spillway crane first priority
Fish unit rehab Phase 1A awaiting funding.
AWS intake trashrack debris management - PDT reviewing alternatives.
Fish unit Intake and entrance grating to be ROV inspection Aug16. Discovered unusual amount of old vegetation buildup.

Predators

USDA hazing by shore and daily counts completed. Planning post season meeting.
Planning removal of bass/walleye/catfish from all dewaterings for gut sample analysis. Permit process not started yet.
Large numbers of pelicans departed project and Three Mile Creek area.
Northern Pikeminnow Management Program Columbia River Dam Angling & Site-Specific Fishery. 49 for the week 7/25-7/31 w/ 440 YTD

Research/Construction/Contractors

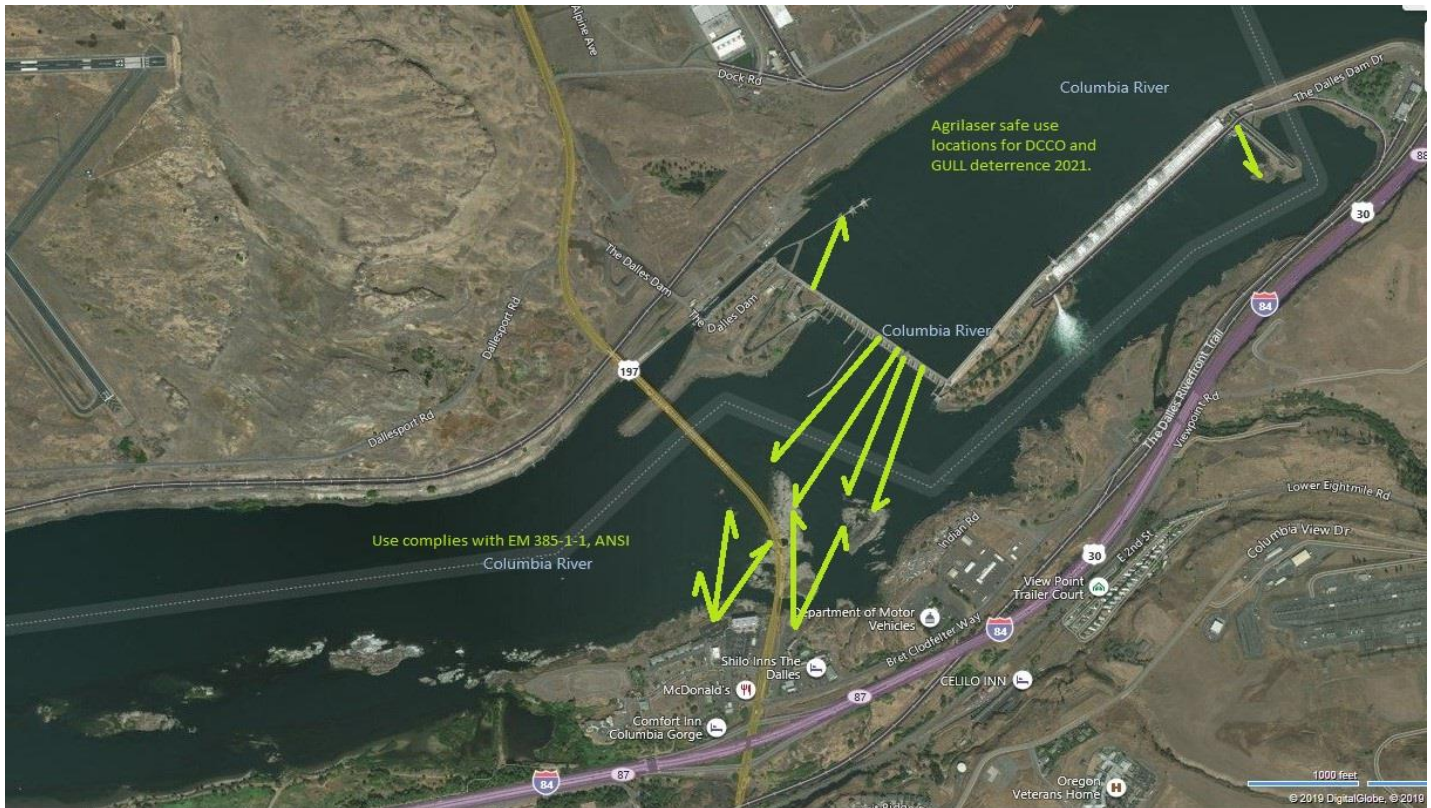
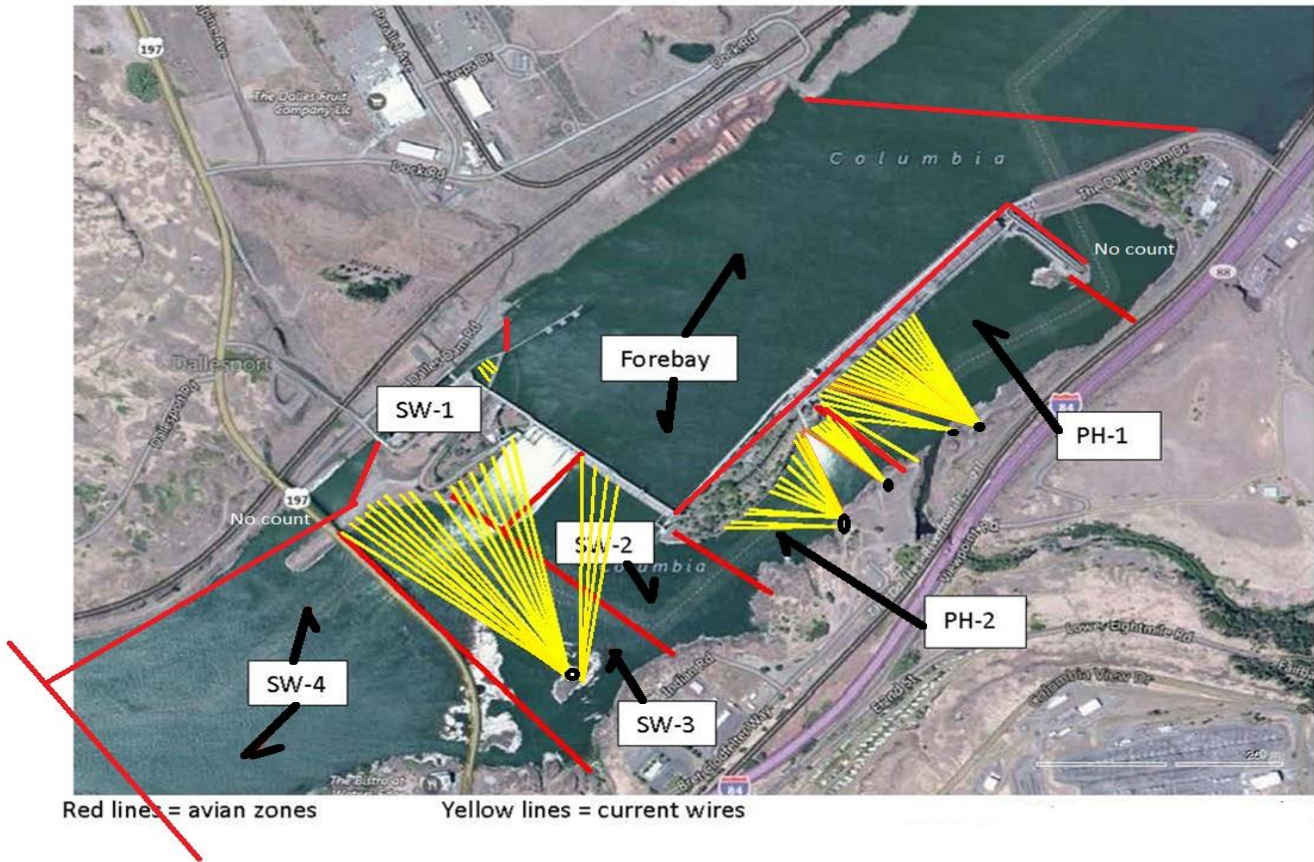
USGS river temperatures link [July](#) [August](#)
4 peaks counting 4/1-10/31
Planned improvements to tribal lamprey trapping equipment. Reduced to bare minimum due to funding constraints
Pikeminnow removal program
Fish Accords Lamprey Passage plan ongoing at 90% due 09/01 DDR junction pool LPS. Investigating mods for entrance and exit weirs.
PTAGIS fishladder data collection at count stations continues.
Lamprey translocation project reporting 872 captures/YTD-traps pulled-operation closed 7/23-8/10 due to 100° temperatures
Zebra mussel sampling completed 8/15. No mussels detected on substrate in ladders.

Operations

Ice Trash sluiceway endgate open. Sluiceways 1,8,18 open per FPP.
East and North fishways in full service

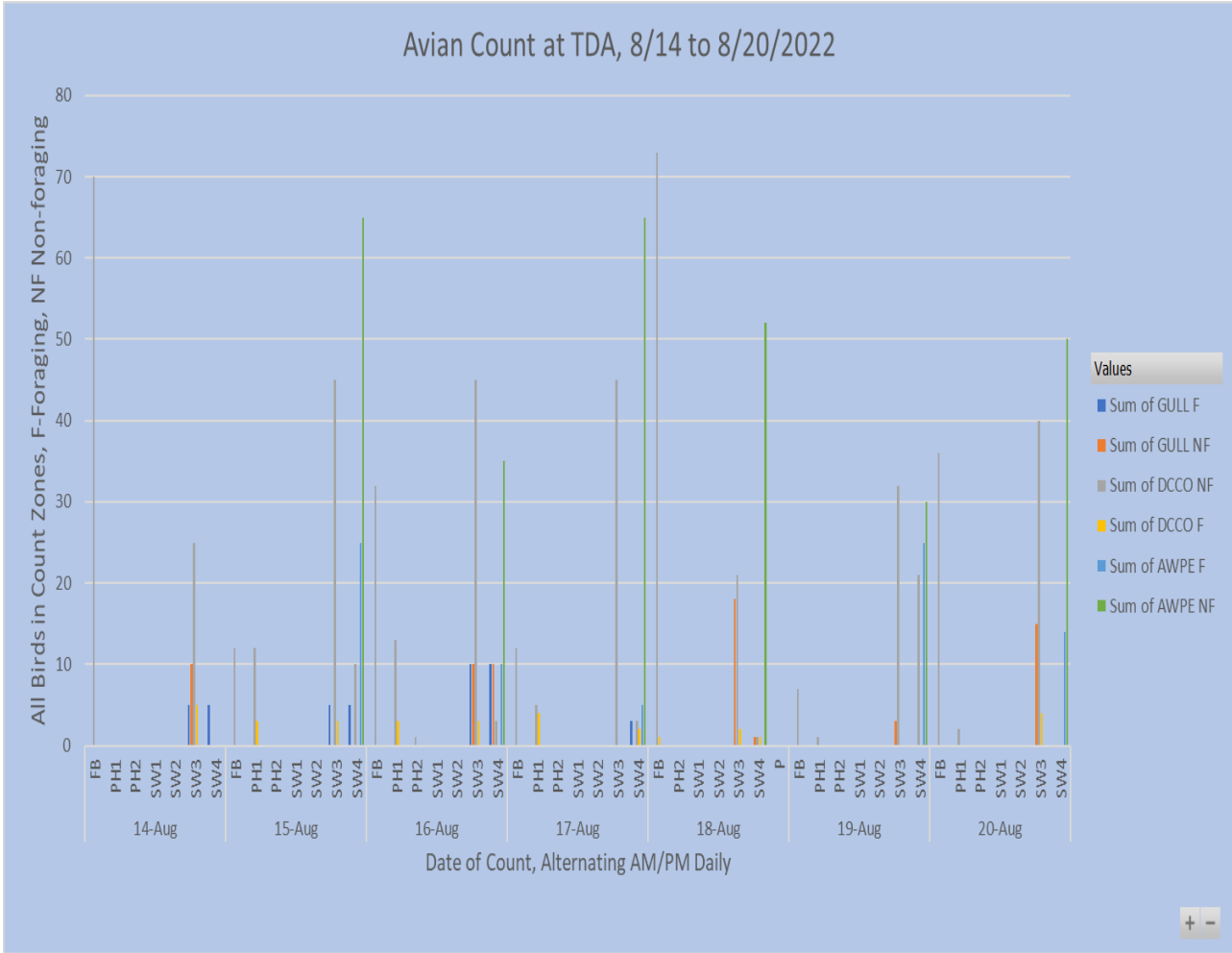
Approved by: Ron Twiner, Operation Project Manager, The Dalles Dam

Bird Count Zones, Avian Lines and Laser Deterrent Sites



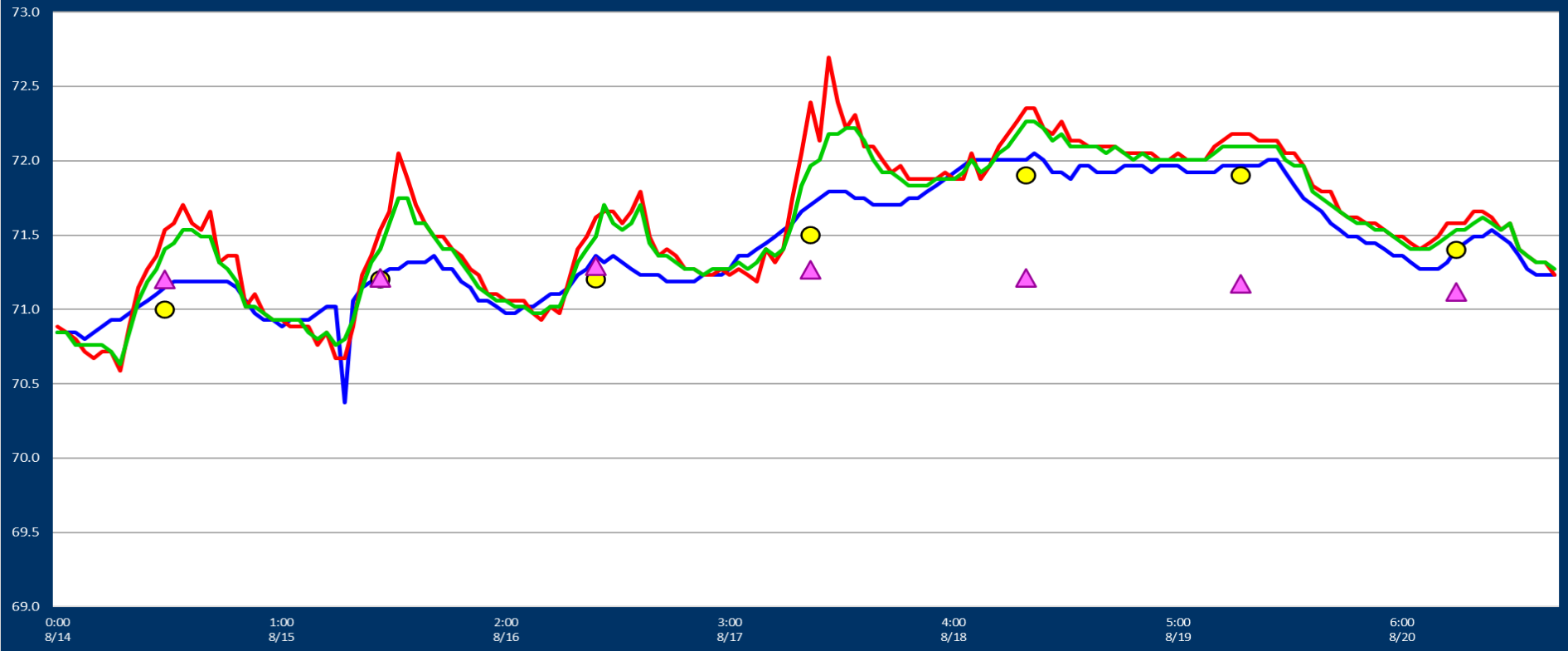
#####

Inspection Period 8/14-8/20 2022



Adult Fish Ladders-River Temperatures

— East Count Station — North Count Station — North Entrance ● Current USGS Daily Average ▲ USGS Daily Average (2007-2021)



Ins.

Secchi:		USGS°F
5.0	Sun	71.0
5.0	Mon	71.2
5.0	Tue	71.2
5.0	Wed	71.5
5.0	Thurs	71.9
5.0	Fri	71.9
6.0	Sat	71.4
5.1	AVG	71.4

Reporting week data

Date:	North Ladder		East Ladder											
			East Entrance					West Entrance			South Entrance			
	Differential	N1 Depth	Differential	E1 Depth	E2 Depth	E3 Depth	JP 6	Differential	W1	W2	W3	Differential	S1	S2
8/14	1.3	10.2	1.5	9.1	11.0	11.1	11.1	1.4	9.6	9.8	-2.2	1.3	10.2	9.6
	1.1	10.2	1.6	9.0	10.9	11.0	11.0	1.5	9.6	9.8	-2.2	1.4	9.5	9.8
8/15	1.3	10.2	1.3	9.1	11.2	11.4	11.1	1.4	9.8	10.0	-2.2	1.3	10.0	10.3
	1.3	10.2	1.4	9.1	11.2	11.4	11.1	1.3	10.0	10.2	-2.1	1.4	10.0	10.2
8/16	ROV'D ALL FISHWAY ENTRANCE GRATING AND FISH UNIT INTAKE TRASHRACKS													
	1.2	10.0	1.6	9.5	10.0	10.2	12.8	1.4	9.9	9.9	-0.6	1.4	10.4	10.2
8/17	1.2	10.3	1.6	7.4	11.3	11.8	11.4	1.4	10.0	10.1	-1.9	1.4	9.9	9.8
	1.4	10.3	1.7	7.1	11.0	10.5	11.1	1.3	10.6	10.7	-1.2	1.4	10.2	10.0
8/18	1.2	10.3	1.4	7.7	11.9	12.1	11.7	1.4	9.8	9.9	-1.6	1.3	10.1	9.9
8/19	1.1	10.2	1.6	7.4	11.6	12.0	11.4	1.4	9.7	9.9	-1.8	1.4	9.8	9.4
	1.1	10.3	1.5	7.8	11.6	11.3	12.2	1.3	10.4	10.6	-1.1	1.3	10.3	9.9
8/20	1.2	10.1	1.5	9.9	11.3	11.5	11.7	1.4	9.5	9.7	-1.5	1.4	10.0	9.7
	1.3	10.2	1.5	9.8	11.5	11.5	11.6	1.5	9.4	9.7	-1.4	1.6	10.1	9.7
AVG:	1.2	10.2	1.5	8.6	11.2	11.3	11.5	1.4	9.9	10.0	-1.6	1.4	10.0	9.9

Fishways are inspected twice daily.

found out of criteria

8/10/22 All MUs in criteria FUs being monitored for differential.

Inspection Period 8/14-8/20 2022 NO Quagga Zebra Mussels Here.

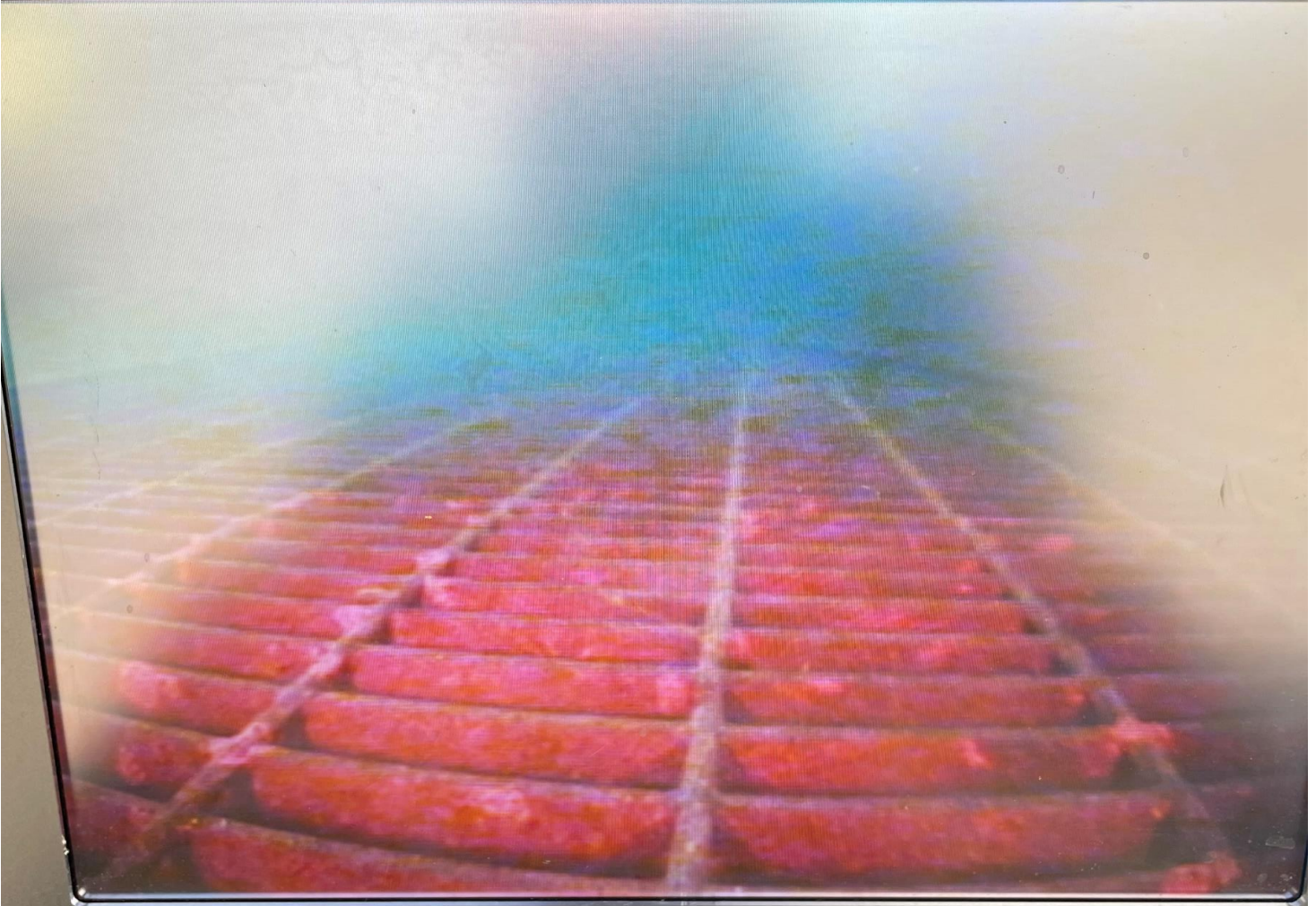


Inspecting the inspector



c o m

Entrance grating



⏻ MENU SELECT ◀ ▶