

The Dalles Dam Fishway Status Report

6/12/22

Inspection Period 6/5-6/11 2022

THE DALLES DAM



US Army Corps
of Engineers
Portland District

The Dalles Project-Fisheries
P.O. Box 564
The Dalles, OR 97058-9998
Phone: 541-506-3800

The Dalles Dam	Inspections OOC	Criteria Limit	Total Number of Inspections: 14		Temperature: 57.5 °F
			Comments: W155 failure RCC restricted FB		Weekly Ave. Secchi: 3.6

NORTH FISHWAY

Exit differential	0	≤ 0.5'			
Count station differential	0	≤ 0.3'			
Weir crest depth	0	1.0' ± 0.1'			
Entrance weir N1	0	depth (≥ 8')		1.5	
Entrance Differential	0	1.0' - 2.0'		11.3	
N2	0	Closed			
PUD Intake differential	0	≤ 0.5'			

EAST FISHWAY

Exit differential	0	≤ 0.5'			
Removable weirs 154-157	0	Per forebay	Note; 155 weir hoist failed. Forebay restriction applied.		
Weir 158-159 differential	0	1.1' ± 0.1'			
Count station differential	0	≤ 0.3'			
153 Weir crest depth	0	1.3' ± 0.1'			
Junction pool weir JP6	0	> 7.0'	Weekly average	18.5	
East entrance differential	0	1.0' - 2.0'	Weekly average	1.4	
Entrance weir E1	0	No criteria	Weekly average	9.9	
Entrance weir E2	0	depth (≥ 8')	Weekly average	9.8	
Entrance weir E3	0	depth (≥ 8')	Weekly average	9.8	
Collection channel velocity	0	1.5 - 4 fps	west 2.39-east 1.78 fps, AVE 1.69fps 6/10		
Transportation channel velocity	0	1.5 - 4 fps	2.48 fps, 4.63 fps AVE 3.55fps		
North channel velocity	0	1.5 - 4 fps	2.08 fps 6/11		
South channel velocity	0	1.5 - 4 fps	3.10 fps 6/11		
West entrance differential	0	1.0' - 2.0'	Weekly average	1.4	
Entrance weir W1	0	depth (≥ 8')	Weekly average	9.5	
Entrance weir W2	0	depth (≥ 8')	Weekly average	9.6	
Entrance weir W3	0	No criteria	Weekly average	5.0	
South entrance differential	0	1.0' - 2.0'	Weekly average	1.5	
Entrance weir S1	1	depth (≥ 8')	Weekly average	11.7	
Entrance weir S2	1	depth (≥ 8')	Weekly average	9.9	

JUVENILE BYPASS

Sluicgate operation	0	Units 1, 8, 18			
Turbine trashrack drawdown	0	<1.5', biwkly	5/16/22 0k		
Spill volume/pattern	0	1 to 22	Pattern per FPP according to volume		
Turbine Unit Priority	0	per FPP			
Gatewells	0	Weekly	6/8/22, small numbers of adult shad observed. One adult salmon mortality, MU9-1 MFR.		

Current Unit Outages

T10 (MU19 & 20) FOOS through 10/27/2022 due to acetylene levels
MU12 OOS 0001 4/12/2021 – 1700 10/27/2022 for Annual & Cooler Upgrades
MU20 OOS 5/16/2022 0630-6/23/2022 1700 ANNUAL FALL PROTECTION
MU20 OOS 5/16/2022 0630-6/23/2022 1700 ANNUAL FALL PROTECTION
MU5 OOS 5/31/2022 0630-6/9/2022 1700 ANNUAL
MU6 OOS 5/31/2022 0630-7/21/2022 1700 6 YEAR

Maintenance

East fishladder wier 155 hoist failed. Weir in down position. Return to service 1/23, depending on funding. Forebay restriction 157.
Permanent oil boom reinstall planned for Apr28 was postponed until this winter.
Calibrations on east fishway entrances. All in criteria.
Spillway assessment (MRER); Spillgates 1- 9 rehab date estimate 2034. Includes replacement of spillbay 9 trunnion pin repair. Spillway crane first priority
Fish unit rehab Phase 1A awaiting funding.
AWS intake trashrack debris management - potential funding FY22.
East ladder window rear crowder brush drive repaired.
Software changes to east exit PLC for rapid changes in forebay. Working well so far.

Predators

Drop in gull and cormorants numbers. Continuing to track changes.
USDA shore and boat hazing continues daily. Sky Guardian falconers begin daily operations focused on weekends during no boat hazing.
Planning removal of bass/walleye/catfish from all dewaterings for gut sample analysis. Working on permit. Fish Passage Plan 2022 approved.

Research/Construction/Contractors

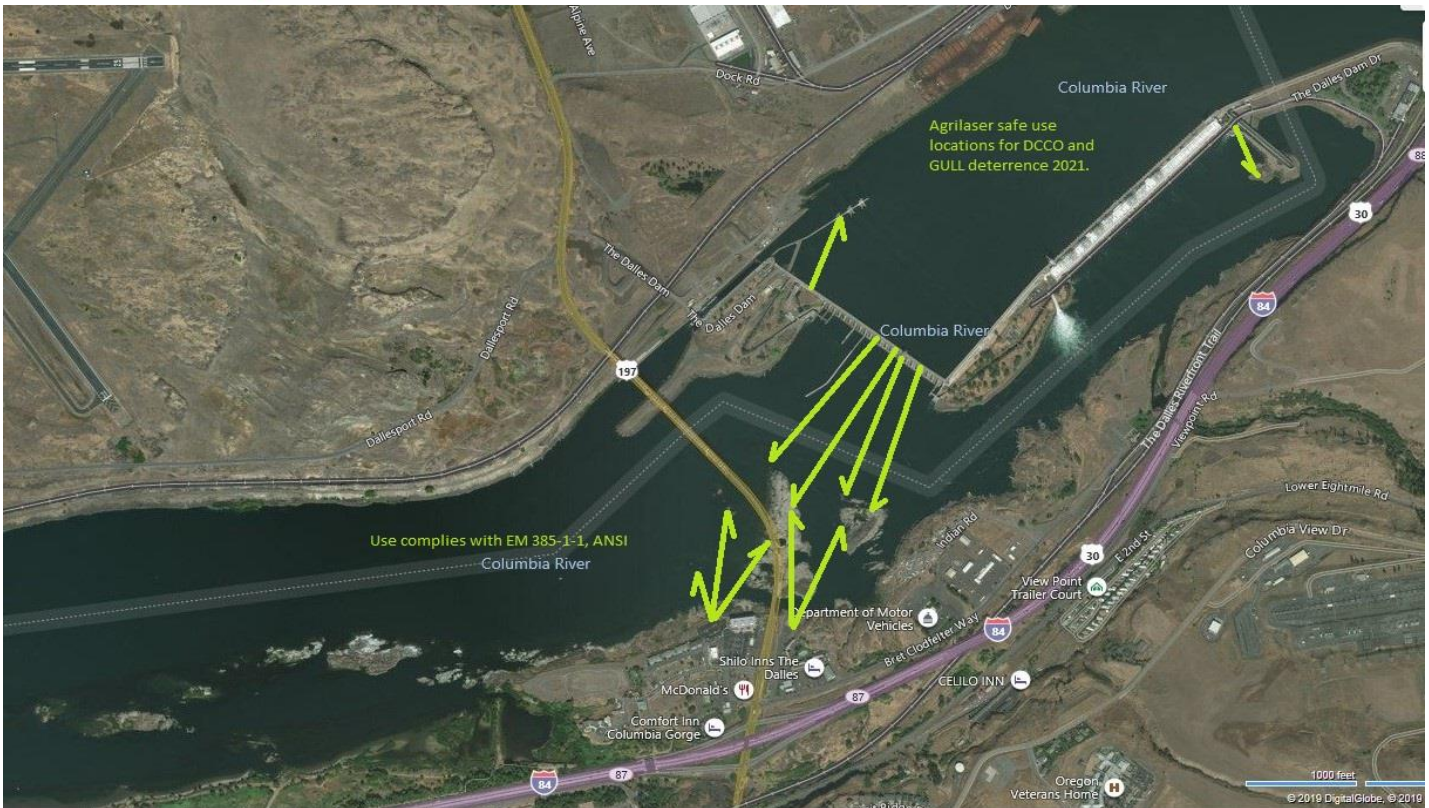
USGS river temperatures link [June°F](#)
4 peaks visual counting resumed April 1
Project engineering exploring ergonomic improvements to tribal lamprey trapping equipment.
Pikeminnow removal program reporting period 5/30-6/5 1/week 33/YTD
Fish Accords Lamprey Passage plan ongoing at 60% DDR junction pool LPS. Investigating mods for entrance and exit wiers.
PTAGIS fishladder data collection at in service count station continues.

Operations

Ice Trash sluiceway endgate Open. Sluiceways open per FPP. Modifications to gate openings made due to forced unit outages.
East and North fishways in full service

Approved by: Ron Twiner, Operation Project Manager, The Dalles Dam

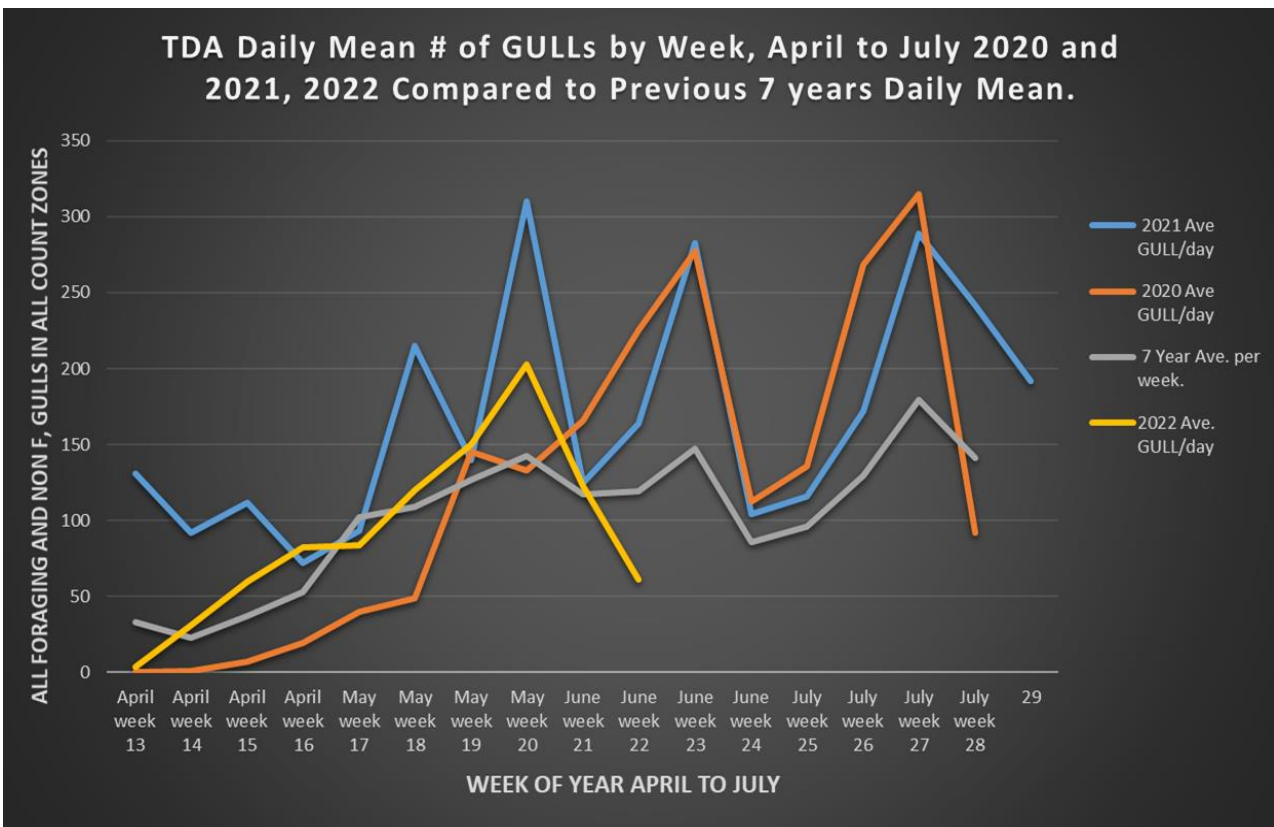
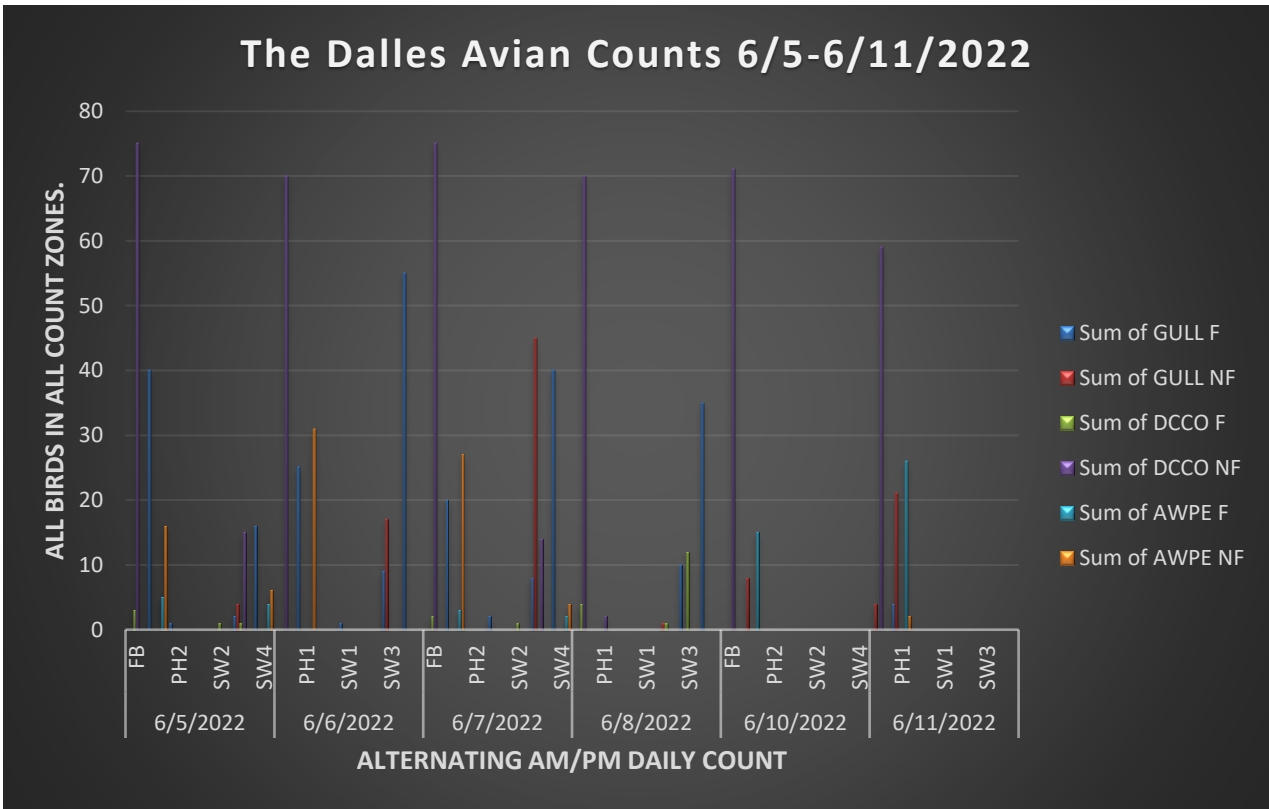
Bird Count Zones, Avian Lines and Laser Deterrent Sites



F=foraging, NF=non-fc

Date	Observer	Time	ZONE	GULL F	GULL NF	DCCO F	DCCO NF	TERN F	TERN NF
6/5	JWR	AM	FB	0	0	3	75	0	0
6/5			PH1	40	0	0	0	0	0
6/5			PH2	1	0	0	0	0	0
6/5			SW1	0	0	0	0	0	0
6/5			SW2	0	0	1	0	0	0
6/5			SW3	2	4	1	15	0	0
6/5			SW4	16	0	0	0	0	0
6/6			JWR	PM	FB	0	0	0	70
6/6	PH1	25			0	0	0	0	0
6/6	PH2	0			0	0	0	0	0
6/6	SW1	1			0	0	0	0	0
6/6	SW2	0			0	0	0	0	0
6/6	SW3	9			17	0	0	0	0
6/6	SW4	55			0	0	0	0	0
6/7	JWR	AM			FB	0	0	2	75
6/7			PH1	20	0	0	0	0	0
6/7			PH2	0	0	0	0	0	0
6/7			SW1	2	0	0	0	0	0
6/7			SW2	0	0	1	0	0	0
6/7			SW3	8	45	0	14	0	0
6/7			SW4	40	0	0	0	0	0
6/8			JED	PM	FB	0	0	4	70
6/8	PH1	0			0	0	2	0	0
6/8	PH2	0			0	0	0	0	0
6/8	SW1	0			0	0	0	0	0
6/8	SW2	0			1	1	0	0	0
6/8	SW3	10			0	12	0	0	0
6/8	SW4	35			0	0	0	0	0
6/9	JWR	AM			FB	0	0	0	0
6/9			PH1	0	0	0	0	0	0
6/9			PH2	0	0	0	0	0	0
6/9			SW1	0	0	0	0	0	0
6/9			SW2	0	0	0	0	0	0
6/9			SW3	0	0	0	0	0	0
6/9			SW4	0	0	0	0	0	0
6/10			MM	PM	FB	0	0	0	71
6/10	PH1	0			8	0	0	0	0
6/10	PH2	0			0	0	0	0	0
6/10	SW1	0			0	0	0	0	0
6/10	SW2	0			0	0	0	0	0
6/10	SW3	0			0	0	0	0	0
6/10	SW4	0			0	0	0	0	0
6/11	MM	AM			FB	0	4	0	59
6/11			PH1	4	21	0	0	0	0
6/11			PH2	0	0	0	0	0	0
6/11			SW1	0	0	0	0	0	0
6/11			SW2	0	0	0	0	0	0
6/11			SW3	0	0	0	0	0	0
6/11			SW4	0	0	0	0	0	0
					FB	0	0	0	0
			PH1	0	0	0	0	0	
			PH2	0	0	0	0	0	

	JWR	AM	SW1	0	0	0	0	0	0
			SW2	0	0	0	0	0	0
			SW3	0	0	0	0	0	0
			SW4	0	0	0	0	0	0



0	0	0	0	0	0	0
0	0	0	0	0	0	0
0	0	0	0	0	0	0
0	0	0	0	0	0	0

Row Labels	Sum of GULL F	Sum of GULL NF	Sum of DCCO F	Sum of DCCO NF	Sum of AWPE F
6/5/2022	59	4	5	90	9
FB	0	0	3	75	0
PH1	40	0	0	0	5
PH2	1	0	0	0	0
SW1	0	0	0	0	0
SW2	0	0	1	0	0
SW3	2	4	1	15	0
SW4	16	0	0	0	4
6/6/2022	90	17	0	70	0
FB	0	0	0	70	0
PH1	25	0	0	0	0
PH2	0	0	0	0	0
SW1	1	0	0	0	0
SW2	0	0	0	0	0
SW3	9	17	0	0	0
SW4	55	0	0	0	0
6/7/2022	70	45	3	89	5
FB	0	0	2	75	0
PH1	20	0	0	0	3
PH2	0	0	0	0	0
SW1	2	0	0	0	0
SW2	0	0	1	0	0
SW3	8	45	0	14	0
SW4	40	0	0	0	2
6/8/2022	45	1	17	72	0
FB	0	0	4	70	0
PH1	0	0	0	2	0
PH2	0	0	0	0	0
SW1	0	0	0	0	0
SW2	0	1	1	0	0
SW3	10	0	12	0	0
SW4	35	0	0	0	0
6/10/2022	0	8	0	71	15
FB	0	0	0	71	0
PH1	0	8	0	0	15
PH2	0	0	0	0	0
SW1	0	0	0	0	0
SW2	0	0	0	0	0
SW3	0	0	0	0	0
SW4	0	0	0	0	0
6/11/2022	4	25	0	59	26
FB	0	4	0	59	0
PH1	4	21	0	0	26
PH2	0	0	0	0	0
SW1	0	0	0	0	0
SW2	0	0	0	0	0
SW3	0	0	0	0	0
SW4	0	0	0	0	0
Grand Total	24-Sep-00	9-Apr-00	25-Jan-00	26-Mar-01	24-Feb-00

Sum of AWPE NF

22

0

16

0

0

0

0

6

31

0

31

0

0

0

0

0

31

0

27

0

0

0

0

4

0

0

0

0

0

0

0

0

0

0

0

0

0

0

0

0

2

0

2

0

0

0

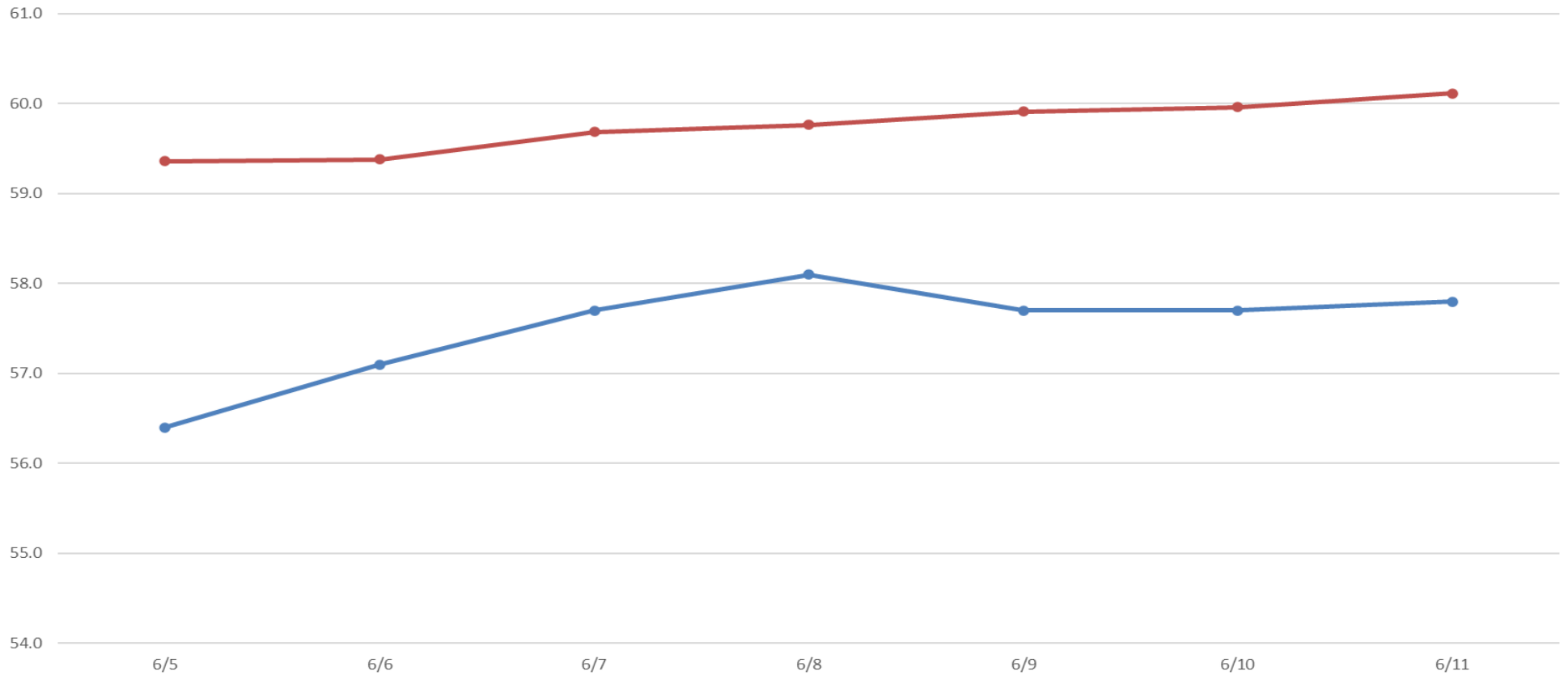
0

0

26-Mar-00

USGS River Temperatures

● Current USGS Daily Average ● USGS Daily Average (2007-2021)



Secchi:		USGS°F
4.0	Sun	56.4
3.5	Mon	57.1
3.5	Tue	57.7
3.5	Wed	58.1
3.5	Thurs	57.7
3.5	Fri	57.7
3.5	Sat	57.8
3.6	AVG	57.5

Reporting week data

Date:	North Ladder		East Ladder											
			East Entrance					West Entrance			South Entrance			
	Differential	N1 Depth	Differential	E1 Depth	E2 Depth	E3 Depth	JP 6	Differential	W1	W2	W3	Differential	S1	S2
6/5	1.4	10.9	1.3	11.0	8.7	8.7	18.0	1.3	10.0	10.1	4.0	1.4	12.1	10.5
	1.5	10.8	1.3	11.0	8.7	8.7	18.0	1.4	9.9	10.0	4.1	1.4	12.0	10.4
6/6	1.4	11.3	1.3	11.3	8.6	8.6	18.2	1.4	9.9	10.0	4.4	1.6	12.4	10.3
	1.4	11.3	1.4	11.2	8.3	8.3	18.2	1.3	10.0	10.1	4.4	1.5	12.2	10.0
6/7	1.4	11.1	1.7	9.2	9.3	9.6	16.2	1.6	8.7	8.8	2.7	1.4	12.7	9.9
	1.5	11.2	1.3	10.6	9.3	9.5	17.6	1.3	10.4	10.6	4.4	1.5	12.4	9.3
6/8	1.5	11.4	1.5	10.8	11.3	11.5	17.7	1.3	10.4	10.6	4.4	1.6	7.5	7.4
	1.5	11.4	1.5	11.2	10.7	10.9	18.2	1.5	8.4	8.6	4.8	1.6	12.4	12.4
6/9	1.5	11.3	1.2	12.4	10.5	10.5	19.4	1.3	9.5	9.7	5.9	1.6	10.2	8.4
	1.4	11.6	1.5	11.2	10.7	10.9	18.2	1.3	9.0	9.2	6.3	1.5	13.5	10.9
6/10	1.5	11.4	1.6	8.3	10.6	10.9	19.3	1.6	8.6	8.8	5.8	1.4	10.5	9.6
	1.5	11.5	1.2	8.2	10.2	10.3	20.0	1.6	8.8	9.0	6.0	1.4	12.1	10.7
6/11	1.4	11.6	1.6	5.8	10.5	10.9	19.7	1.5	9.0	9.3	6.0	1.3	11.5	8.9
	1.4	11.6	1.3	6.6	9.9	10.2	20.5	1.3	9.8	10.0	6.8	1.4	12.2	9.4
AVG:	1.5	11.3	1.4	9.9	9.8	10.0	18.5	1.4	9.5	9.6	5.0	1.5	11.7	9.9

Fishways are inspected twice daily.

found out of criteria



Spilling south of spillwall.