

# The Dalles Dam Fishway Status Report

4/17/22

Inspection Period 4/10-4/16 2022

## THE DALLES DAM



US Army Corps  
of Engineers  
Portland District

The Dalles Project-Fisheries  
P.O. Box 564  
The Dalles, OR 97058-9998  
Phone: 541-506-3800

<b>The Dalles Dam</b>	Inspections OOB	Criteria Limit	<b>Total Number of Inspections:</b> 14		<b>Temperature:</b> 47.5 °F
			<b>Comments:</b> NPUD sampling bypass RTS		<b>Weekly Ave. Secchi:</b> 4.7

### NORTH FISHWAY

Exit differential	0	≤ 0.5'			
Count station differential	0	≤ 0.3'			
Weir crest depth	0	1.0' ± 0.1'			
Entrance weir N1	0	depth (≥ 8')		1.3	
Entrance Differential	0	1.0' - 2.0'		10.3	
N2	0	Closed			
PUD Intake differential	0	≤ 0.5'			

### EAST FISHWAY

Exit differential	0	≤ 0.5'			
Removable weirs 154-157	0	Per forebay			
Weir 158-159 differential	0	1.1' ± 0.1'			
Count station differential	0	≤ 0.3'			
153 Weir crest depth	0	1.0' ± 0.1'			
Junction pool weir JP6	0	> 7.0'	Weekly average	11.2	
East entrance differential	0	1.0' - 2.0'	Weekly average	1.4	
Entrance weir E1	0	No criteria	Weekly average	3.2	
Entrance weir E2	0	depth (≥ 8')	Weekly average	12.6	
Entrance weir E3	0	depth (≥ 8')	Weekly average	12.6	
Collection channel velocity	0	1.5 - 4 fps	1.61 fps 4/16		
Transportation channel velocity	0	1.5 - 4 fps	2.87 fps 4/13		
North channel velocity	0	1.5 - 4 fps	3.15 fps 4/16		
South channel velocity	1	1.5 - 4 fps	4.64 fps 4/13		
West entrance differential	0	1.0' - 2.0'	Weekly average	1.4	
Entrance weir W1	0	depth (≥ 8')	Weekly average	9.8	
Entrance weir W2	0	depth (≥ 8')	Weekly average	9.9	
Entrance weir W3	0	No criteria	Weekly average	-2.1	
South entrance differential	0	1.0' - 2.0'	Weekly average	1.5	
Entrance weir S1	0	depth (≥ 8')	Weekly average	9.1	
Entrance weir S2	0	depth (≥ 8')	Weekly average	9.1	

### JUVENILE BYPASS

Sluiceway operation	0	Units 1, 8, 18			
Turbine trashrack drawdown	0	<1.5', biwkly	4/13/22	0k	
Spill volume/pattern	0	1 to 8	Per FPP		
Turbine Unit Priority	0	per FPP			
Gatewells	0	Weekly	4/12/22, small numbers of juv. salmonid fish observed. No mortality.		

## Current Unit Outages

MU1 FOOS (Line 1) 1650 4/5/2022 Due to BPA PT damage (Big Eddy), RTS unknown

MU2 FOOS (Line 1) 1650 4/5/2022 Due to 4/17/2022

Inspection Period 4/10-4/7 2022 4/10/2022

MU4 FOOS (Line 2) 1650 4/5/2022 Due to BPA PT damage (Big Eddy), RTS unknown

T10 (MU19 & 20) FOOS through 10/27/2022 due to acetylene levels

MU12 OOS 0001 4/12/2021 – 1700 10/27/2022 for Annual & Cooler Upgrades

MU 17 OOS 3/28/2022 0630 – 7/15/2022 1700 for 6 yr. overhaul and top plate

MU19 OOS 0630 6/27/2021 – 1700 10/27/2022 for Top Plate Cover Upgrade and blade linkage inspection

## Maintenance

Permanent oil boom removed from east exit for repairs. Parts arriving, fabricating attachments. Planning install Apr28.

Fishway automation replacement entrances and exits in operation. Work resumes in June, pending funding.

Calibrations on east fishway entrances, Dara Doty working to fine tune. All in criteria.

Spillway assessment (MRER); Spillgates 1- 9 rehab date estimate 2034. Includes replacement of spillbay 9 trunnion pin repair. Spillway crane top priority

Fish unit rehab - Phase 1A on hold. Date to be determined. Planning operation with AWS backup water supply during construction.

AWS intake trashrack debris issue - No funding FY22.

East ladder window rear crowder brush drive not working.

## Predators

~45 cormorant nesting pairs on BPA towers. Gull and DCCO actively feeding in tailwater now.

California gulls on project and shore hazing began 4/15.

Planning removal of bass/walleye/catfish from all dewaterings for gut sample analysis. Fish Passage Plan 2022 approved.

## Research/Construction/Contractors

USGS river temperatures link [April°F](#)

4 peaks visual counting resumed April 1

USDA conducting combined projects (BON, TDA, JDA) avian hazing training 4/12-4/15 at The Dalles north

Operations test results of new PSMFC switchgate/juvenile sampling facility at north ladder PUD details forthcoming

Fish Accords Lamprey Passage plan ongoing at 60% DDR junction pool LPS

PTAGIS fishladder data collection at in service count station continues.

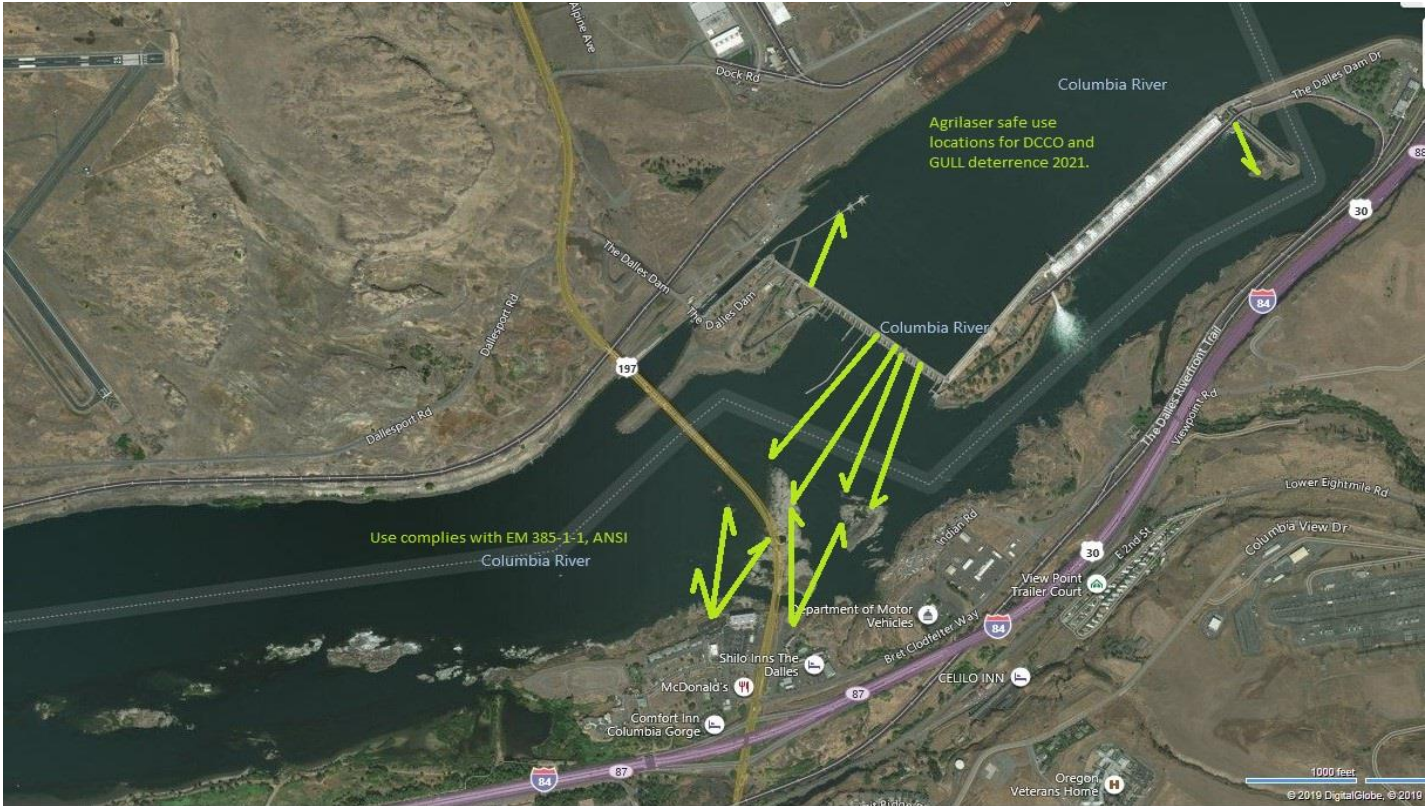
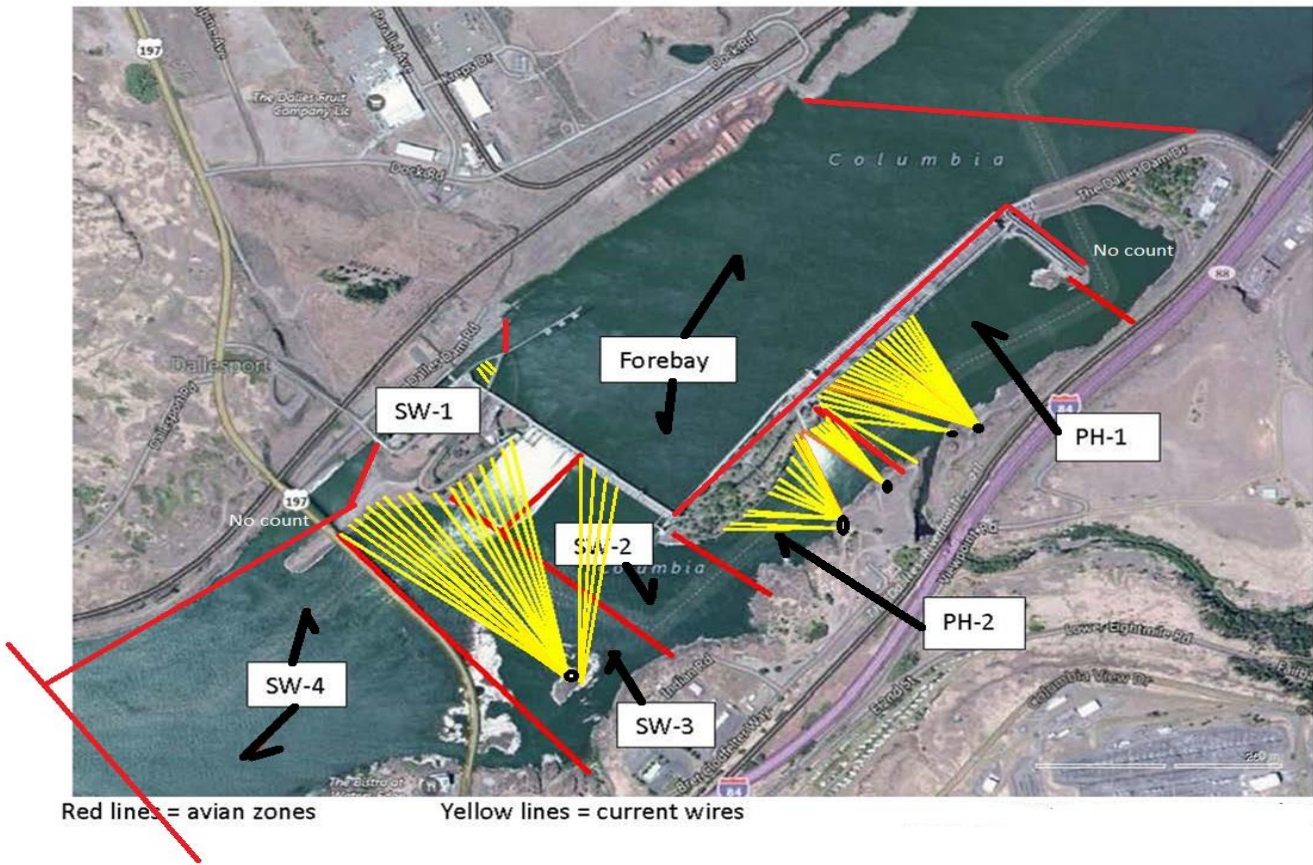
## Fishway Operations

Ice Trash sluiceway endgate Open. Sluiceways open per FPP. Modifications to gate openings made due to recent unit outages-Big Eddy fire.

East and North fishways in full service

Approved by: Ron Twiner, Operation Project Manager, The Dalles Dam

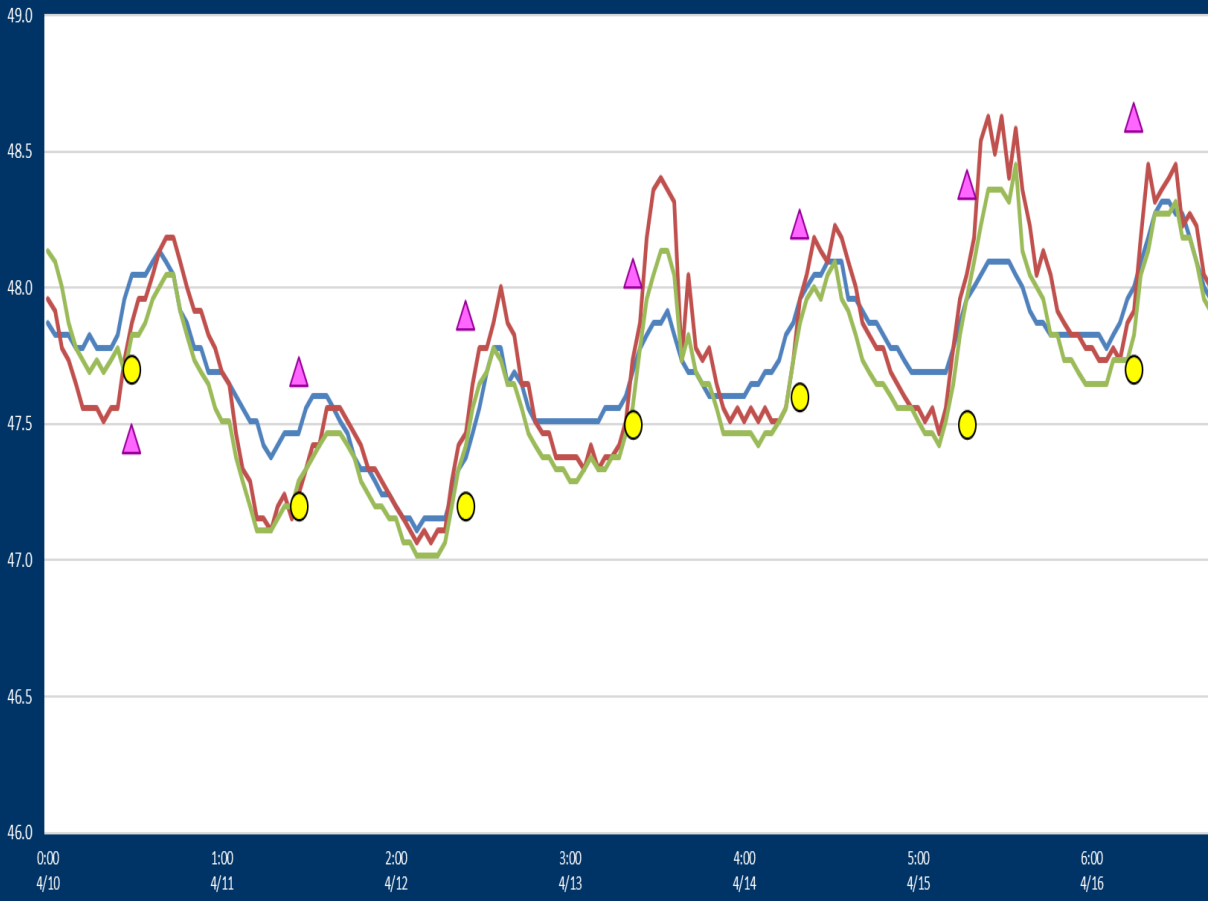
# Bird Count Zones, Avian Lines and Laser Deterrent Sites





### Adult Fish Ladders-River Temperatures

— East Count Station — North Count Station — North Entrance ● Current USGS Daily Average ▲ USGS Daily Average (2007-2021)



Insr

Secchi:		USGS°F
5.0	Sun	47.7
5.0	Mon	47.2
5.0	Tue	47.2
4.0	Wed	47.5
5.0	Thurs	47.6
4.5	Fri	47.5
4.5	Sat	47.7
4.7	median	47.5

## Reporting week data

Date:	North Ladder		East Ladder											
			East Entrance					West Entrance			South Entrance			
	Differential	N1 Depth	Differential	E1 Depth	E2 Depth	E3 Depth	JP 6	Differential	W1	W2	W3	Differential	S1	S2
4/10	1.4	9.9	1.5	2.0	12.2	12.4	10.0	1.4	9.5	9.7	-3.1	1.7	8.5	8.5
	1.4	9.8	1.5	2.0	12.2	12.4	10.0	1.7	9.1	9.4	-3.4	1.6	8.5	8.5
4/11	1.4	10.0	1.3	2.8	12.4	12.6	10.8	1.3	10.0	10.4	-2.4	1.4	9.3	9.3
	1.2	10.0	1.3	3.6	12.6	12.6	11.6	1.3	10.3	10.5	-1.6	1.3	9.8	9.8
4/12	1.4	10.1	1.4	3.5	12.7	12.8	11.6	1.4	10.0	10.0	-1.6	1.4	9.1	9.1
	1.3	10.2	1.3	4.1	13.2	13.2	12.1	1.4	10.2	10.2	-1.5	1.5	9.4	9.4
4/13	1.4	10.1	1.3	4.0	13.2	13.3	12.0	1.3	10.4	10.4	-1.3	1.4	9.2	9.2
	1.0	12.4	1.4	3.7	12.7	12.7	11.7	1.5	9.8	9.8	-1.7	1.5	9.3	9.1
4/14	1.3	10.3	1.5	3.7	12.7	12.7	11.7	1.4	9.9	9.9	-1.5	1.5	9.3	9.3
	1.3	10.3	1.4	3.8	12.8	12.8	11.8	1.5	9.9	9.9	-1.6	1.5	9.0	9.0
4/15	1.2	10.4	1.4	2.9	12.5	12.5	10.9	1.4	9.6	9.6	-2.3	1.5	9.3	9.3
	1.2	10.4	1.6	2.5	12.1	12.2	10.5	1.6	9.3	9.3	-2.7	1.6	9.0	8.9
4/16	1.2	10.4	1.4	2.8	12.4	12.5	10.8	1.4	9.6	9.6	-2.3	1.5	9.2	9.2
	1.2	10.4	1.4	3.0	12.6	12.6	11.0	1.4	9.8	9.7	-2.2	1.5	9.2	9.2
<b>AVG:</b>	<b>1.3</b>	<b>10.3</b>	<b>1.4</b>	<b>3.2</b>	<b>12.6</b>	<b>12.7</b>	<b>11.2</b>	<b>1.4</b>	<b>9.8</b>	<b>9.9</b>	<b>-2.1</b>	<b>1.5</b>	<b>9.1</b>	<b>9.1</b>

*Fishways are inspected twice daily.*

found out of criteria