

The Dalles Dam Fishway Status Report

4/10/22

Inspection Period 4/3-4/9 2022

THE DALLES DAM



US Army Corps
of Engineers
Portland District

The Dalles Project-Fisheries
P.O. Box 564
The Dalles, OR 97058-9998
Phone: 541-506-3800

The Dalles Dam	Inspections OOC	Criteria Limit	Total Number of Inspections: 14		Temperature: 47.4 °F
			Comments: NPUD sampling bypass RTS		Weekly Ave. Secchi: 4.7

NORTH FISHWAY

Exit differential	0	≤ 0.5'			
Count station differential	0	≤ 0.3'			
Weir crest depth	0	1.0' ± 0.1'			
Entrance weir N1	0	depth (≥ 8')		1.3	
Entrance Differential	0	1.0' - 2.0'		9.9	
N2	0	Closed			
PUD Intake differential	0	≤ 0.5'			

EAST FISHWAY

Exit differential	0	≤ 0.5'			
Removable weirs 154-157	0	Per forebay			
Weir 158-159 differential	0	1.1' ± 0.1'			
Count station differential	0	≤ 0.3'			
153 Weir crest depth	0	1.0' ± 0.1'			
Junction pool weir JP6	0	> 7.0'	Weekly average	11.8	
East entrance differential	0	1.0' - 2.0'	Weekly average	1.5	
Entrance weir E1	0	No criteria	Weekly average	3.8	
Entrance weir E2	0	depth (≥ 8')	Weekly average	11.7	
Entrance weir E3	0	depth (≥ 8')	Weekly average	11.7	
Collection channel velocity	0	1.5 - 4 fps	2.62 fps 3/25		
Transportation channel velocity	0	1.5 - 4 fps	3.90fps 4/2		
North channel velocity	0	1.5 - 4 fps	3.15 fps 4/2		
South channel velocity	0	1.5 - 4 fps	3.94 fps 4/2		
West entrance differential	0	1.0' - 2.0'	Weekly average	1.5	
Entrance weir W1	0	depth (≥ 8')	Weekly average	9.5	
Entrance weir W2	0	depth (≥ 8')	Weekly average	9.8	
Entrance weir W3	0	No criteria	Weekly average	-1.7	
South entrance differential	0	1.0' - 2.0'	Weekly average	1.6	
Entrance weir S1	0	depth (≥ 8')	Weekly average	8.8	
Entrance weir S2	0	depth (≥ 8')	Weekly average	8.8	

JUVENILE BYPASS

Sluiceway operation	0	Units 1, 18			
Turbine trashrack drawdown	0	<1.5', biwklly	4/13/22 0k		
Spill volume/pattern	0	1 to 8			
Turbine Unit Priority	0	per FPP			
Gatewells	0	Weekly	4/30/22, no fish observed.		

Current Unit Outages

MU1 FOOS (Line 1) 1650 4/5/2022 Due to BPA PT damage (Big Eddy), RTS unknown
MU2 FOOS (Line 1) 1650 4/5/2022 Due to BPA PT damage (Big Eddy), RTS unknown
MU3 FOOS (Line 2) 1650 4/5/2022 Due to 4/10/2022
MU4 FOOS (Line 2) 1650 4/5/2022 Due to BPA PT damage (Big Eddy), RTS unknown
T10 (MU19 & 20) FOOS through 10/27/2022 due to acetylene levels
MU12 OOS 0001 4/12/2021 – 1700 10/27/2022 for Annual & Cooler Upgrades
MU 17 OOS 3/28/2022 0630 – 7/15/2022 1700 for 6 yr. overhaul and top plate
MU19 OOS 0630 6/27/2021 – 1700 10/27/2022 for Top Plate Cover Upgrade and blade linkage inspection

Maintenance

Permanent oil boom removed from east exit for repairs. Parts arriving, fabricating attachments. Determining install timing.
Fishway automation replacement entrances and exits in operation. Work to finish resumes in June, pending funding.
Calibrations on east fishway entrances still need slight adjustments. All in criteria. South entrance experiencing low flows criteria problems.
Spillway assessment (MRER); Spillgates 1- 9 rehab date estimate 2034. Includes replacement of spillbay 9 trunnion pin repair. Spillway crane top priority
Fish unit rehab - Phase 1A on hold. Date to be determined. Planning operation with AWS backup water supply during construction.
AWS intake trashrack debris issue - No funding FY22.
East ladder window rear crowder brush drive not working.

Predators

~20 cormorants nesting pairs on BPA towers. Gull flybys increasing
California gulls not observed foraging on project. Gulls feeding at the mouth of the Klickitat River.
Planning removal of bass/walleye/catfish from all dewaterings for gut sample analysis. Fish Passage Plan 2022 approved.

Research/Construction/Contractors

USGS river temperatures link [April°F](#)
4 peaks visual counting resumed April 1
USDA conducting combined projects (BON, TDA, JDA) avian hazing training 4/12-4/15 at The Dalles north
Operations test results of new PSMFC switchgate/juvenile sampling facility at north ladder PUD details forthcoming
Fish Accords Lamprey Passage plan ongoing at 60% DDR junction pool LPS
PITAGS fishladder data collection at in service count station continues.

Fishway Operations

Ice Trash sluiceway endgate Open. Sluiceways open per FPP. Modifications to gate openings made due to recent unit outages-Big Eddy fire.
East and North fishways in full service
MU 17 draft tube fish rescue, 1 white sturgeon ~ 120cm released to tailwater unharmed. PIT tag observation.

Approved by: Ron Twiner, Operation Project Manager, The Dalles Dam

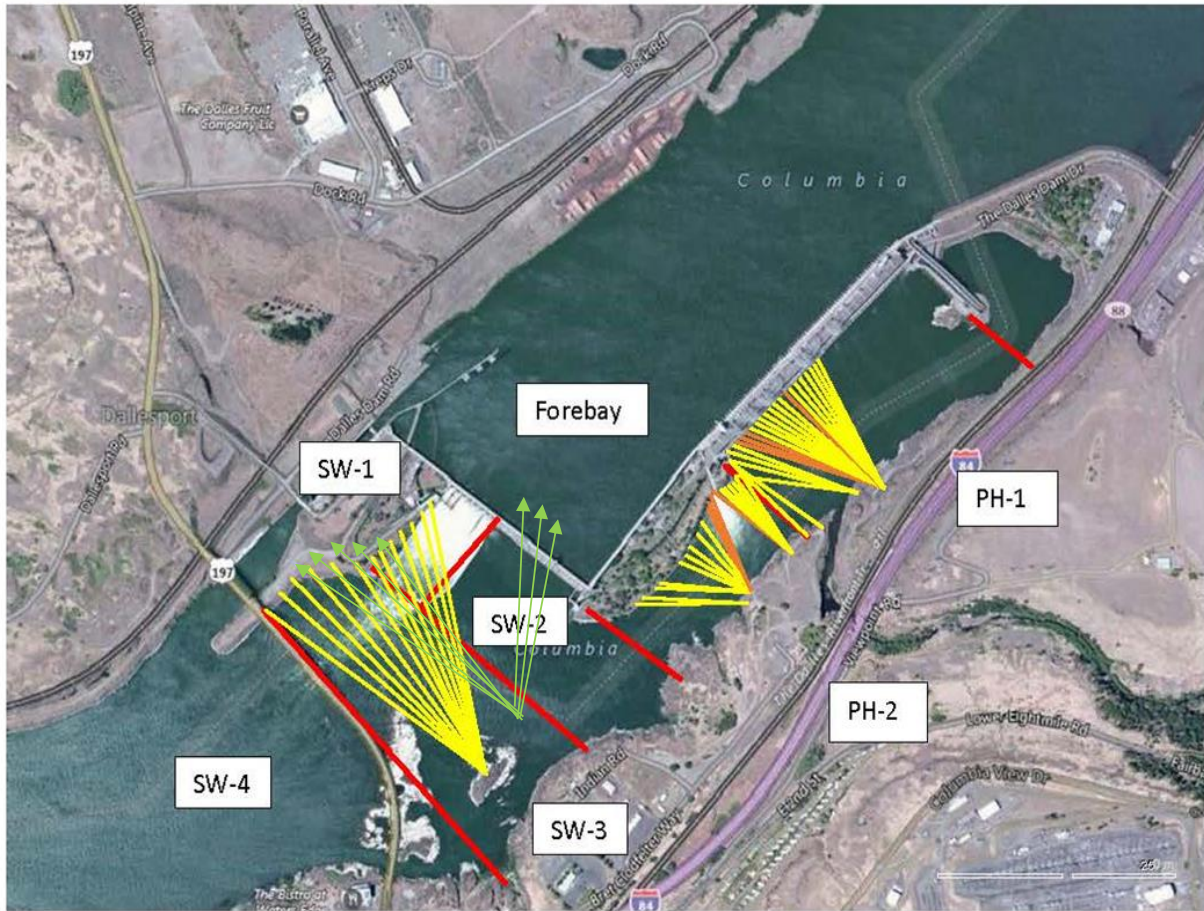
Mark/Recapture/Recovery Details for All Tags

Tag	Event Type	Species Run Rear	Event Date	Event Site Code	Event Release Date	Event Release Site Code	Project Code	Project Coordinator	File Name	Session Message	Text Comment
3D9.1C2 D3103C3	Mark	White Sturgeon	12/14/2010	COLR4	01/14/2011	COLR4	WSR	Philip Simpson	WSR103 48.5GT	CRI-WHITE STURGEON TAGGING DATA	90 cm

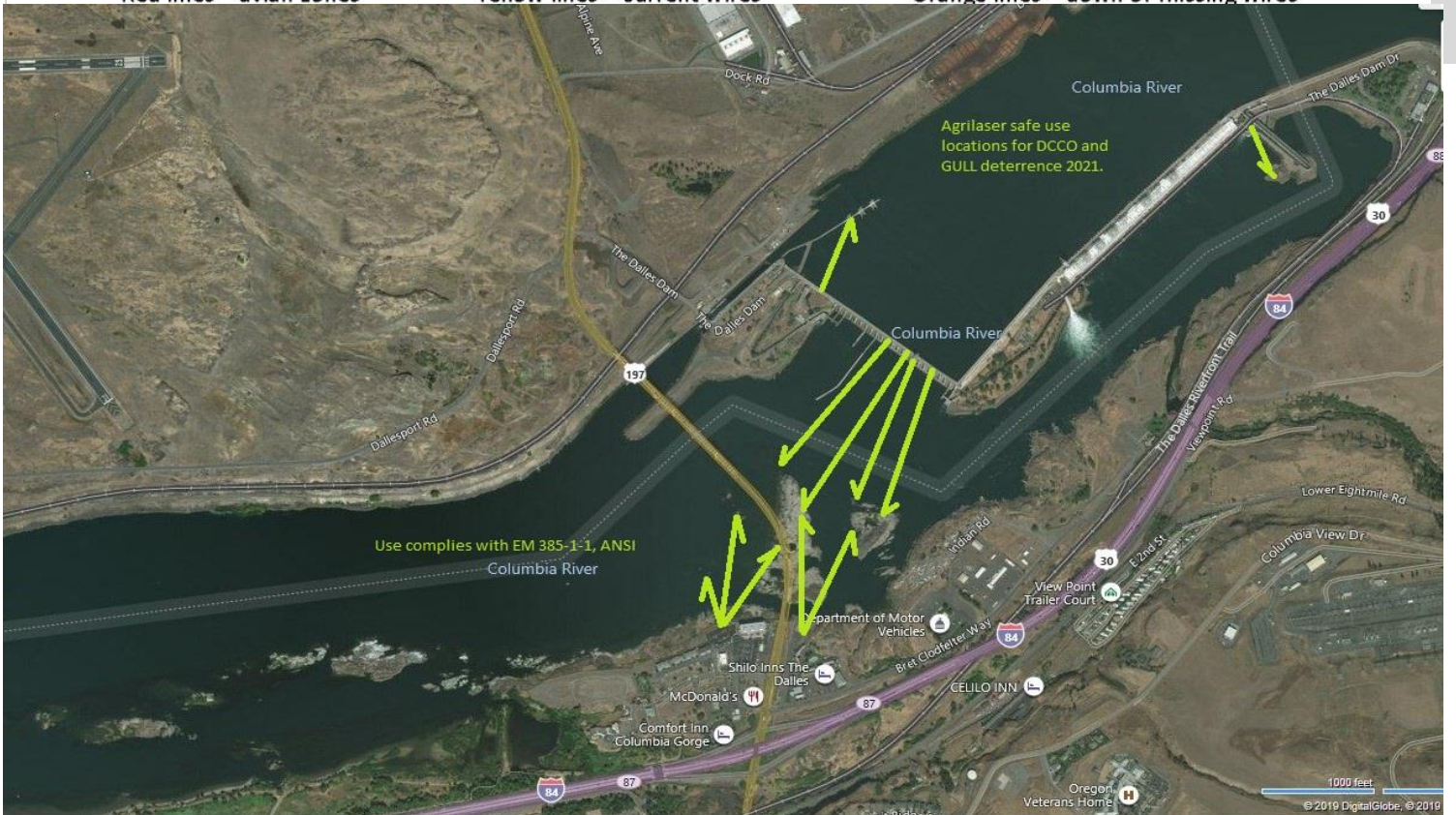




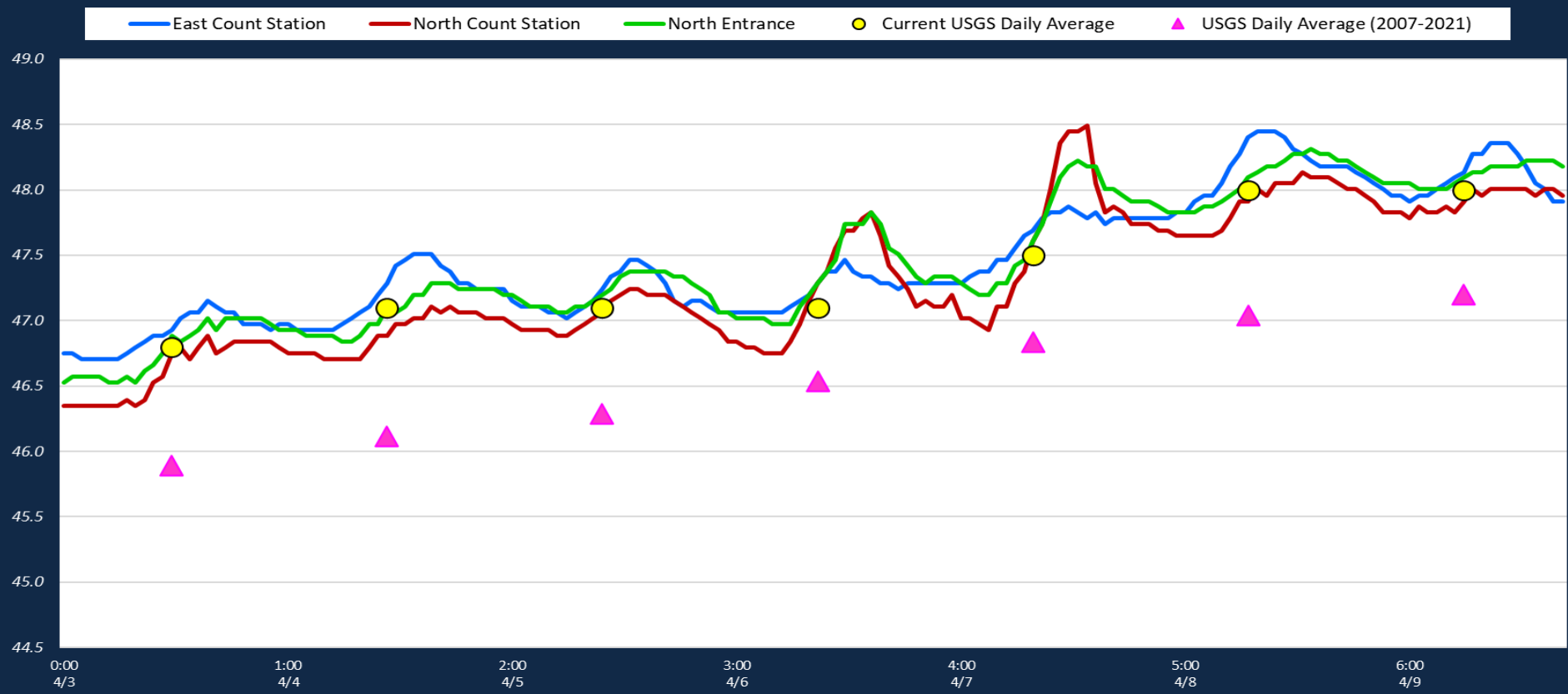
New Avian Lines and laser deterrent zones



Red lines = avian zones Yellow lines = current wires Orange lines = down or missing wires



Adult Fish Ladders - River Temperatures



Secchi:		USGS°F
5.0	Sun	46.8
5.0	Mon	47.1
5.0	Tue	47.1
4.0	Wed	47.1
5.0	Thurs	47.5
4.5	Fri	48.0
4.5	Sat	48.0
4.7	median	47.4

Reporting week data

Date:	North Ladder		East Ladder											
			East Entrance					West Entrance			South Entrance			
	Differential	N1 Depth	Differential	E1 Depth	E2 Depth	E3 Depth	JP 6	Differential	W1	W2	W3	Differential	S1	S2
4/3	1.3	9.9	1.6	3.5	11.4	11.9	11.5	1.5	9.6	10.0	-2.0	1.6	8.5	8.5
	1.3	9.9	1.6	2.8	11.3	11.8	10.8	1.6	9.0	9.5	-2.7	1.6	8.4	8.4
4/4	1.3	10.0	1.5	3.7	11.5	12.0	11.7	1.5	9.7	10.2	-1.8	1.6	9.1	9.1
	1.2	10.0	1.6	3.0	11.5	12.1	11.0	1.5	9.5	10.1	-2.4	1.6	8.5	8.6
4/5	1.3	9.8	1.6	5.0	10.7	11.2	13.0	1.5	9.7	10.2	-0.7	1.4	10.0	10.0
	1.3	9.9	1.4	3.0	11.9	12.6	11.0	1.5	9.2	9.7	-2.5	1.6	8.6	8.6
4/6	1.3	9.9	1.6	3.9	11.4	12.0	11.9	1.6	9.4	9.9	-1.6	1.5	8.9	8.8
	1.3	9.9	1.3	4.9	13.1	12.0	12.9	1.3	10.2	10.8	-0.7	1.6	8.6	8.6
4/7	1.4	9.9	1.4	5.3	11.4	11.3	13.3	1.4	10.0	10.2	-0.4	1.4	9.7	9.7
	1.4	9.8	1.5	4.6	11.5	11.5	12.6	1.6	9.6	9.7	-1.0	1.5	9.4	9.2
4/8	1.4	9.8	1.4	4.2	12.2	12.2	12.2	1.6	9.4	9.5	-1.3	1.6	8.9	8.9
	1.3	9.8	1.5	4.0	12.0	12.1	12.0	1.6	9.3	9.3	-1.5	1.6	8.9	8.8
4/9	1.2	9.9	1.4	3.2	12.3	12.5	11.2	1.5	9.4	9.5	-2.2	1.6	8.1	8.1
	1.2	9.9	1.7	2.5	11.6	11.8	10.5	1.7	9.1	9.2	-2.8	1.7	8.2	8.2
AVG:	1.3	9.9	1.5	3.8	11.7	11.9	11.8	1.5	9.5	9.8	-1.7	1.6	8.8	8.8

Fishways are inspected twice daily.

found out of criteria



Project provided beaver portage and access
to a move in ready dam



A sign of the season