

# The Dalles Dam Fishway Status Report

3/20/22

Inspection Period 3/13-3/19/2022

## THE DALLES DAM



The Dalles Project-Fisheries  
 P.O. Box 564  
 The Dalles, OR 97058-9998  
 Phone: 541-506-3800

<b>The Dalles Dam</b>	<b>Inspections OOC</b>	<b>Criteria Limit</b>	<b>Total Number of Inspections:</b> 14		<b>Temperature:</b> 42.2 °F
			<b>Comments:</b> Navlock RTS		<b>Weekly Ave. Secchi:</b> 4.0

### NORTH FISHWAY

Exit differential	0	≤ 0.5'			
Count station differential	0	≤ 0.3'			
Weir crest depth	0	1.0' ± 0.1'			
Entrance weir N1	0	depth (≥ 8')		9.9	
Entrance Differential	0	1.0' - 2.0'		1.3	
N2	0	Closed			
PUD Intake differential	0	≤ 0.5'			

### EAST FISHWAY

Exit differential	0	≤ 0.5'			
Removable weirs 154-157	0	Per forebay			
Weir 158-159 differential	0	1.1' ± 0.1'			
Count station differential	0	≤ 0.3'			
153 Weir crest depth	0	1.0' ± 0.1'			
Junction pool weir JP6	0	> 7.0'	Weekly average	12.0	
East entrance differential	0	1.0' - 2.0'	Weekly average	1.5	
Entrance weir E1	0	No criteria	Weekly average	4.0	
Entrance weir E2	0	depth (≥ 8')	Weekly average	11.4	
Entrance weir E3	0	depth (≥ 8')	Weekly average	11.8	
Collection channel velocity	0	1.5 - 4 fps	1.71 fps 3/20		
Transportation channel velocity	1	1.5 - 4 fps	4.15fps 3/20		
North channel velocity	0	1.5 - 4 fps	3.39 fps 3/20		
South channel velocity	0	1.5 - 4 fps	3.80 fps 3/20		
West entrance differential	0	1.0' - 2.0'	Weekly average	1.5	
Entrance weir W1	0	depth (≥ 8')	Weekly average	9.6	
Entrance weir W2	0	depth (≥ 8')	Weekly average	10.0	
Entrance weir W3	0	No criteria	Weekly average	-1.6	
South entrance differential	0	1.0' - 2.0'	Weekly average	1.5	
Entrance weir S1	0	depth (≥ 8')	Weekly average	9.6	
Entrance weir S2	0	depth (≥ 8')	Weekly average	9.6	

### JUVENILE BYPASS

Sluicgate operation	0	Units 1, 18	in criteria		
Turbine trashrack drawdown	0	<1.5', biwkly	3/13/2022 all in criteria		
Spill volume/pattern	0	1 to 8	Spill closed		
Turbine Unit Priority	0	per FPP			
Gatewells	0	Weekly	No fish observed 3/15/2022		

## OTHER ISSUES:

### Current Unit Outages

- MU3 OOS 2/7/2022 0630 – 3/17/2022 1700 6 YEAR
- T10 (MU19 & 20) FOOS through 10/27/2022 due to acetylene levels
- MU12 OOS 0001 4/12/2021 – 1700 10/27/2022 for Annual & Cooler Upgrades
- MU19 OOS 0630 6/27/2021 – 1700 10/27/2022 for Top Plate Cover Upgrade and blade linkage inspection  
Nav Locks RTS

### Maintenance

Permanent oil boom removed from east exit for repairs. Planning install with attachment redesign and fabrication  
Fishway automation replacement work all fishways complete.  
North fishladder maintenance complete, returned to service Feb16.  
Spillway assessment (MRER); Spillgates 1- 9 rehab date estimate 2034. Includes replacement of spillbay 9 trunnion pin repair. Spillway crane top priority  
Calibrations on east fishway entrances are being monitored and will need slight adjustments

### Predators

Resident cormorants in lower numbers than previous years, foraging in SW3. Bald eagles seen occasionally over forebay.  
California gulls not seen this week-see graph  
Planning removal of bass/walleye/catfish from all dewaterings for gut sample analysis. Fish Passage Plan 2022 approved.

### Research/Construction/Contractors

#### [TD-USGS °F](#)

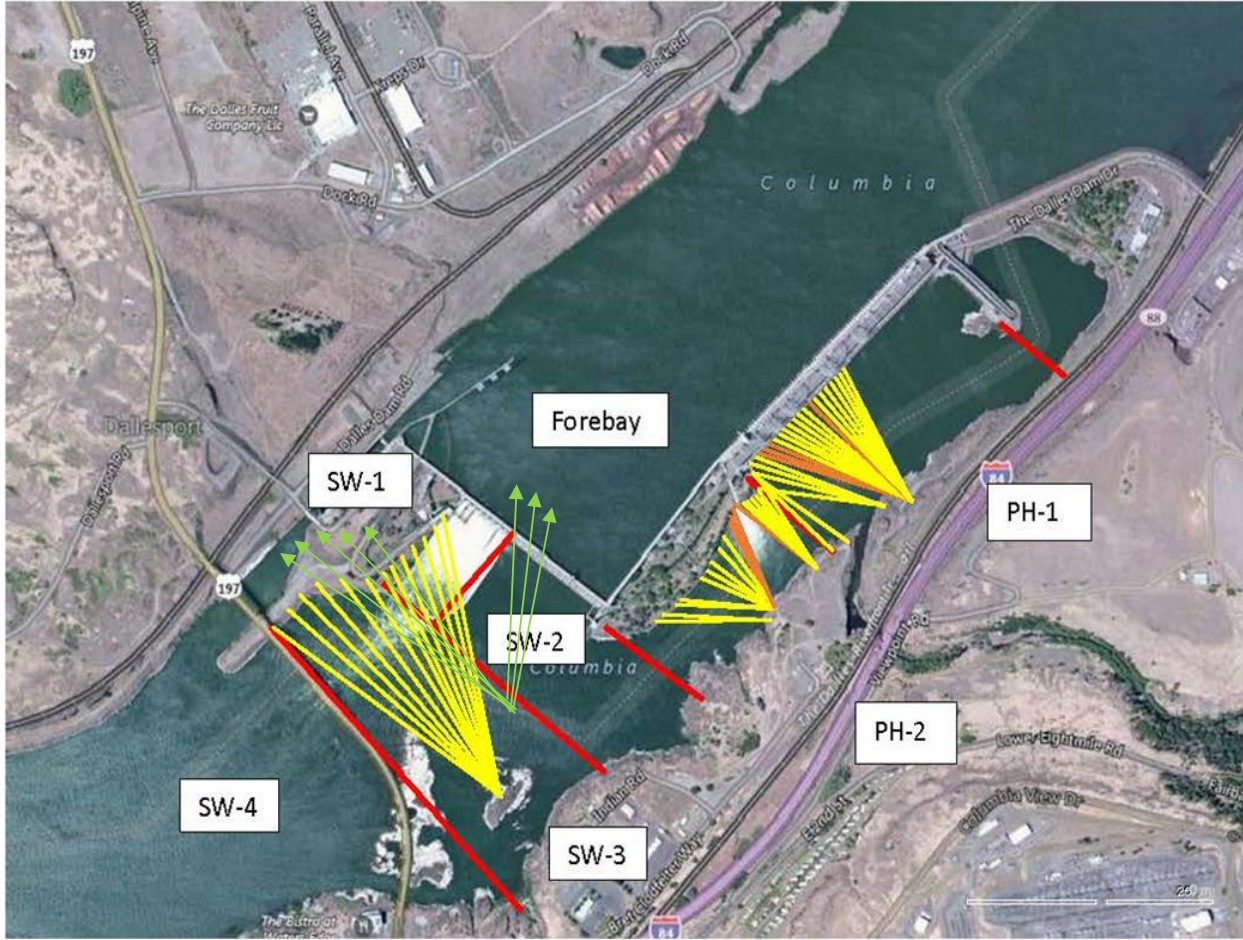
AWS intake trashrack debris issue - No funding FY22.  
Fish Accords Lamprey Passage plan ongoing at 60% DDR junction pool LPS  
PITAGS fishladder data collection at in service count station continues.  
Fish unit rehab - Phase 1A on hold. Date to be determined. Planning operation with AWS backup water supply during construction.  
PUD concrete form work underway for new juvenile sampling facility  
4 peaks video count underway at count stations. Visual counting starts April 1

### Fishway Operations

East and North fishways in full service  
Ice Trash sluiceway endgate Open. MU1 and 18 intakes opened for fish egress according to FPP

Approved by: Ron Twiner, Operation Project Manager, The Dalles Dam

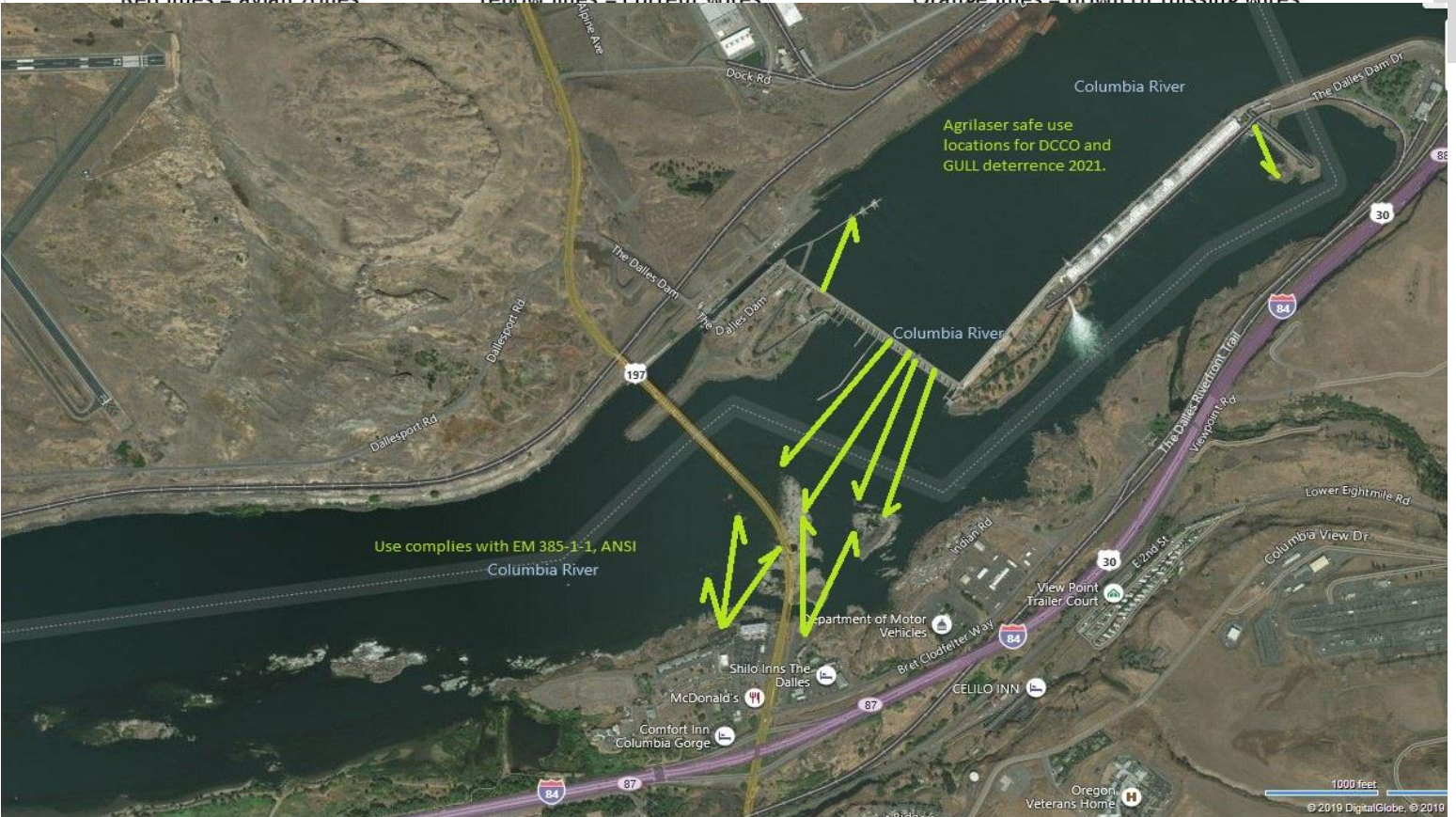
New Avian Lines and laser deterrent zones



Red lines = avian zones

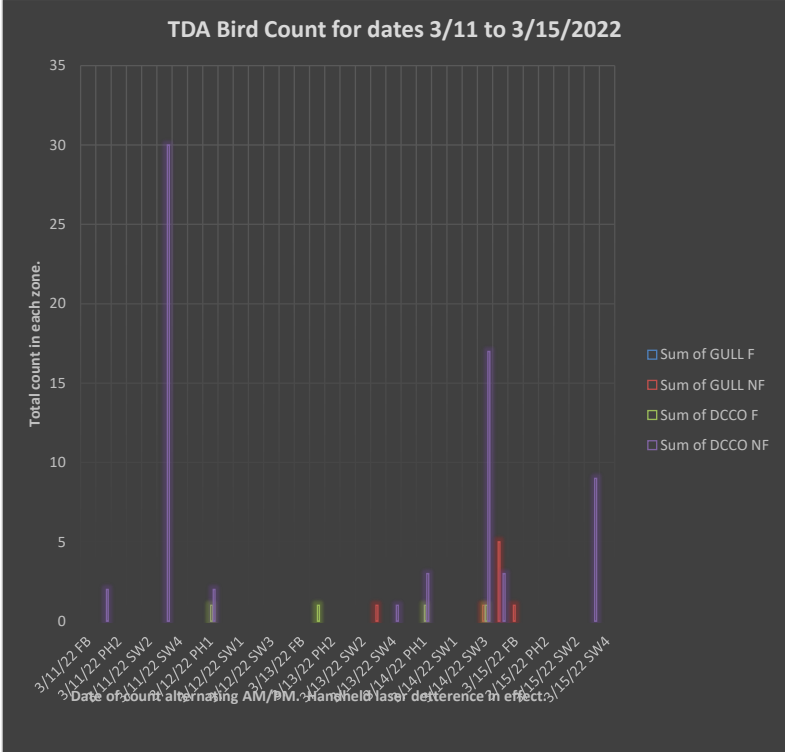
Yellow lines = current wires

Orange lines = down or missing wires

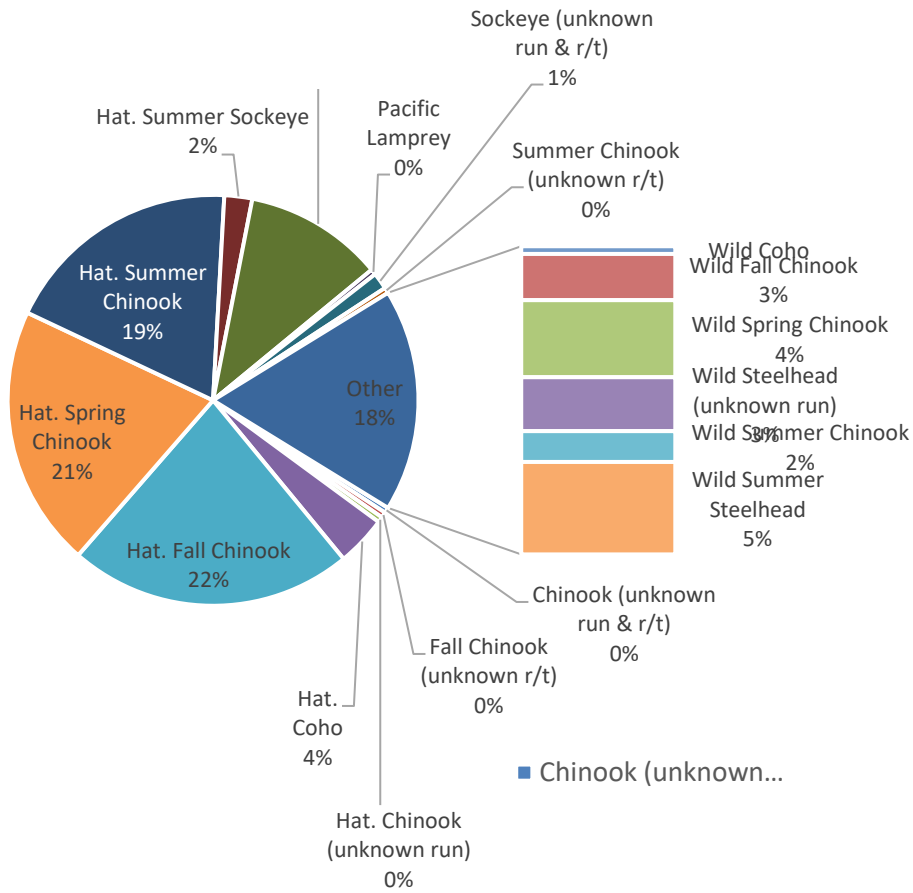


Use complies with EM 385-1-1, ANSI

Agrilaser safe use locations for DCCO and GULL deterrence 2021.



Loan Pine Islands, (TDLPI) Ground scan MRR PIT Tags 2021-2022,  
n Total 223.



Ratios of various species of salmon runs mark tags found on islands west of The Dalles Dam in 2021

# Adult Fish Ladders-River Temperatures

— East Count Station    — North Count Station    — North Entrance    ● Current USGS Daily Average    ▲ USGS Daily Average (2007-2021)



Secchi:		USGS°F
4.0	Sun	41.8
4.0	Mon	41.9
4.0	Tue	41.9
4.0	Wed	42.2
4.0	Thurs	42.3
4.0	Fri	42.6
4.0	Sat	43.0
4.0	median	42.2

The Dalles Dam Daily Readings and Averages for  
Temperatures, Secchi, Entrances, and Spill

out of criteria

Date:	North Ladder		East Ladder											
			East Entrance					West Entrance			South Entrance			
	Differential	N1 Depth	Differential	E1 Depth	E2 Depth	E3 Depth	JP 6	Differential	W1	W2	W3	Differential	S1	S2
3/13	1.3	10.2	1.3	4.4	11.9	12.4	12.4	1.4	9.9	10.3	-1.2	1.5	9.6	9.6
	1.3	10.1	1.4	4.2	11.7	12.1	12.2	1.4	9.8	10.1	-1.6	1.5	9.3	9.3
3/14	1.2	10.0	1.4	4.5	11.5	12.0	12.5	1.4	10.1	10.7	-1.3	1.5	9.5	9.4
	1.3	9.8	1.6	3.4	11.4	12.0	11.4	1.5	9.4	9.8	-2.0	1.6	8.9	8.8
3/15	1.3	9.8	1.4	4.0	11.8	12.3	11.9	1.4	9.7	10.1	-1.8	1.5	9.1	9.0
	1.4	9.8	1.4	3.1	12.0	12.6	11.1	1.5	9.2	9.6	-2.5	1.6	8.4	8.3
3/16	1.3	9.7	1.4	4.6	11.2	11.8	12.6	1.3	10.3	10.8	-1.1	1.4	10.4	10.4
	1.4	9.7	1.5	3.1	11.2	11.8	11.1	1.6	9.0	9.5	-2.5	1.5	9.4	9.4
3/17	1.4	9.7	1.3	4.7	11.4	11.5	12.7	1.3	10.1	10.6	-1.1	1.4	10.3	10.4
	1.4	9.8	1.6	3.7	11.0	11.1	11.7	1.6	9.3	9.8	-1.9	1.5	9.9	9.9
3/18	1.3	9.9	1.6	4.9	10.8	10.9	12.9	1.6	9.3	9.4	-0.9	1.3	10.4	10.5
	1.2	10.1	1.7	3.5	11.5	11.7	11.5	1.5	9.2	9.4	-1.7	1.4	9.8	9.8
3/19	1.4	9.7	1.4	5.2	11.3	11.5	13.2	1.5	10.1	10.1	-0.7	1.3	10.5	10.6
	1.3	9.8	1.8	3.1	11.4	11.7	11.1	1.7	9.2	9.3	-2.3	1.6	9.2	9.3
<b>AVG:</b>	<b>1.3</b>	<b>9.9</b>	<b>1.5</b>	<b>4.0</b>	<b>11.4</b>	<b>11.8</b>	<b>12.0</b>	<b>1.5</b>	<b>9.6</b>	<b>10.0</b>	<b>-1.6</b>	<b>1.5</b>	<b>9.6</b>	<b>9.6</b>

Fishways are inspected once daily.

ready for spring run

