

The Dalles Dam Fishway Status Report

3/12/22

Inspection Period 3/6-3/12/2022

THE DALLES DAM



US Army Corps
of Engineers
Portland District

The Dalles Project-Fisheries
P.O. Box 564
The Dalles, OR 97058-9998
Phone: 541-506-3800

The Dalles Dam	Inspections OOC	Criteria Limit	Total Number of Inspections: 14		Temperature: 40.0 °F
			Comments: fish season underway		Weekly Ave. Secchi: 4.4

NORTH FISHWAY

Exit differential	0	≤ 0.5'			
Count station differential	0	≤ 0.3'			
Weir crest depth	0	1.0' ± 0.1'			
Entrance weir N1	0	depth (≥ 8')		10.1	
Entrance Differential	0	1.0' - 2.0'		1.3	
N2	0	Closed			
PUD Intake differential	0	≤ 0.5'			

EAST FISHWAY

Exit differential	0	≤ 0.5'			
Removable weirs 154-157	0	Per forebay			
Weir 158-159 differential	0	1.1' ± 0.1'			
Count station differential	0	≤ 0.3'			
153 Weir crest depth	0	1.0' ± 0.1'			
Junction pool weir JP6	0	> 7.0'	Weekly average	12.5	
East entrance differential	0	1.0' - 2.0'	Weekly average	1.6	
Entrance weir E1	0	No criteria	Weekly average	5.7	
Entrance weir E2	1	depth (≥ 8')	Weekly average	10.8	
Entrance weir E3	1	depth (≥ 8')	Weekly average	11.0	
Collection channel velocity	0	1.5 - 4 fps	3.04fps 1/28		
Transportation channel velocity	1	1.5 - 4 fps	4.28fps 3/10		
North channel velocity	0	1.5 - 4 fps	3.02fps 3/10		
South channel velocity	0	1.5 - 4 fps	3.91fps 2/22		
West entrance differential	0	1.0' - 2.0'	Weekly average	1.5	
Entrance weir W1	0	depth (≥ 8')	Weekly average	9.6	
Entrance weir W2	0	depth (≥ 8')	Weekly average	9.8	
Entrance weir W3	0	No criteria	Weekly average	-1.1	
South entrance differential	0	1.0' - 2.0'	Weekly average	1.5	
Entrance weir S1	0	depth (≥ 8')	Weekly average	9.6	
Entrance weir S2	0	depth (≥ 8')	Weekly average	9.5	

JUVENILE BYPASS

Sluiceway operation	0	Units 1, 18	in criteria		
Turbine trashrack drawdown	0	<1.5', biwkly			
Spill volume/pattern	0	1 to 8	Spill closed		
Turbine Unit Priority	0	per FPP			
Gatewells	0	Weekly	No mortality observed 3/5/2022		

OTHER ISSUES:

Current Unit Outages

- MU3 OOS 2/7/2022 0630 – 3/17/2022 1700 6 YEAR
- T10 (MU19 & 20) FOOS through 10/27/2022 due to acetylene levels
- MU12 OOS 0001 4/12/2021 – 1700 10/27/2022 for Annual & Cooler Upgrades
- MU19 OOS 0630 6/27/2021 – 1700 10/27/2022 for Top Plate Cover Upgrade and blade linkage inspection
- Nav Locks 2/13/2022 0600-03/19/2022 2359 annual

Maintenance

Permanent oil boom removed from east exit for repairs. Planning install with attachment redesign and fabrication

Fishway automation replacement work continues. East fishway complete. North in progress.

North fishladder maintenance complete, returned to service Feb16.

Spillway assessment (MRER); Spillgates 1- 9 rehab date estimate 2034. Includes replacement of spillbay 9 trunnion pin repair. Spillway crane top priority

Calibrations on east fishway entrances are being monitored and will need slight adjustments

Predators

Resident cormorants in lower numbers than previous years, foraging in SW3. Bald eagles seen occasionally over forebay.

California gulls returning to resting areas in SW4-see graph

Planning removal of bass/walleye/catfish from all dewaterings for gut sample analysis. Fish Passage Plan 2022 approved.

Research/Construction/Contractors

[TD-USGS °F](#)

AWS intake trashrack debris issue - No funding FY22.

Fish Accords Lamprey Passage plan ongoing at 60% DDR junction pool LPS

PITAGS fishladder data collection at in service count station continues.

Fish unit rehab - Phase 1A on hold. Date to be determined. Planning operation with AWS backup water supply during construction.

PUD concrete form work underway for new juvenile sampling facility

4 peaks video count underway

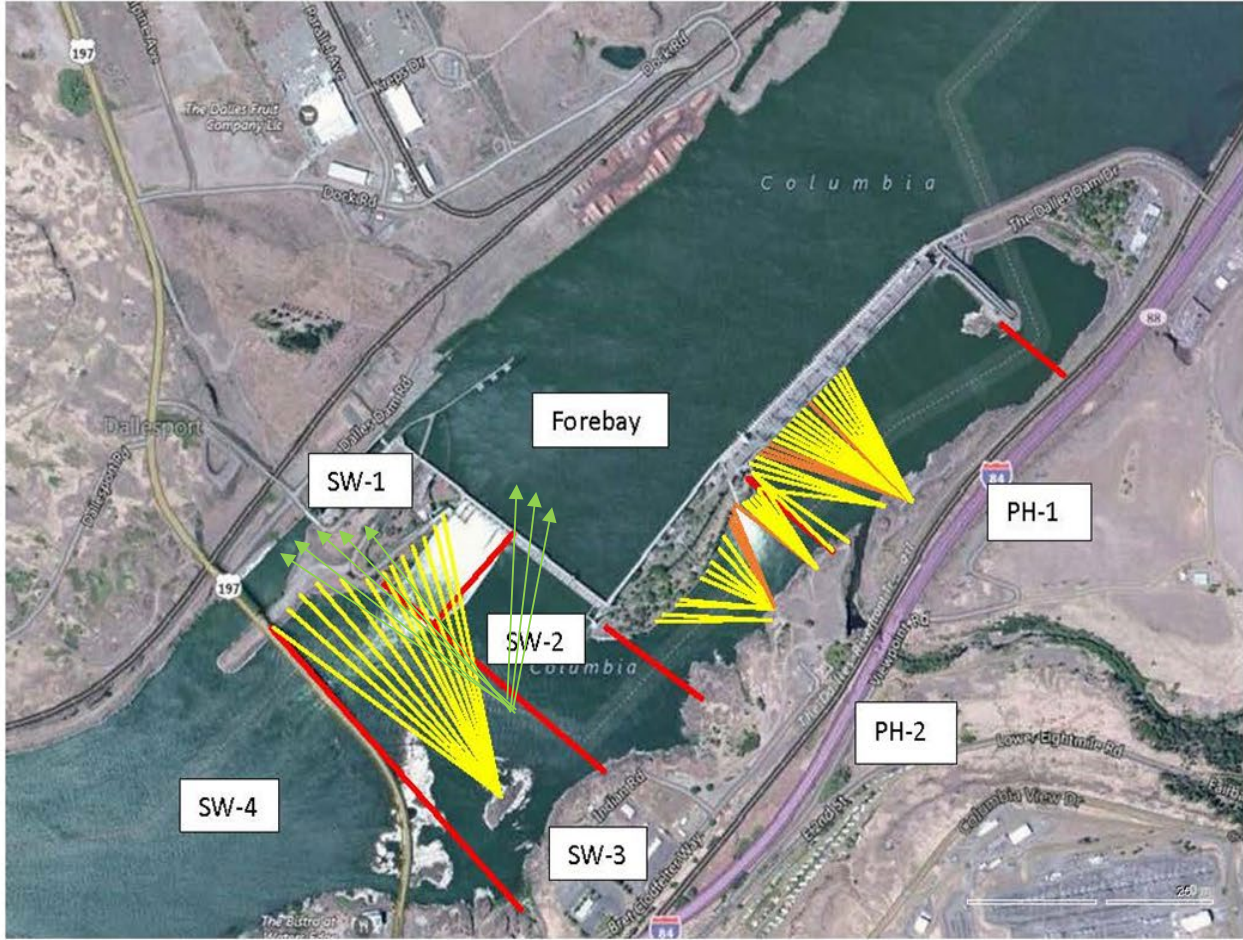
Fishway Operations

East and North fishways in full service

Ice Trash sluiceway endgate Open. MU1 and 18 intakes opened for fish egress according to FPP

Approved by: Ron Twiner, Operation Project Manager, The Dalles Dam

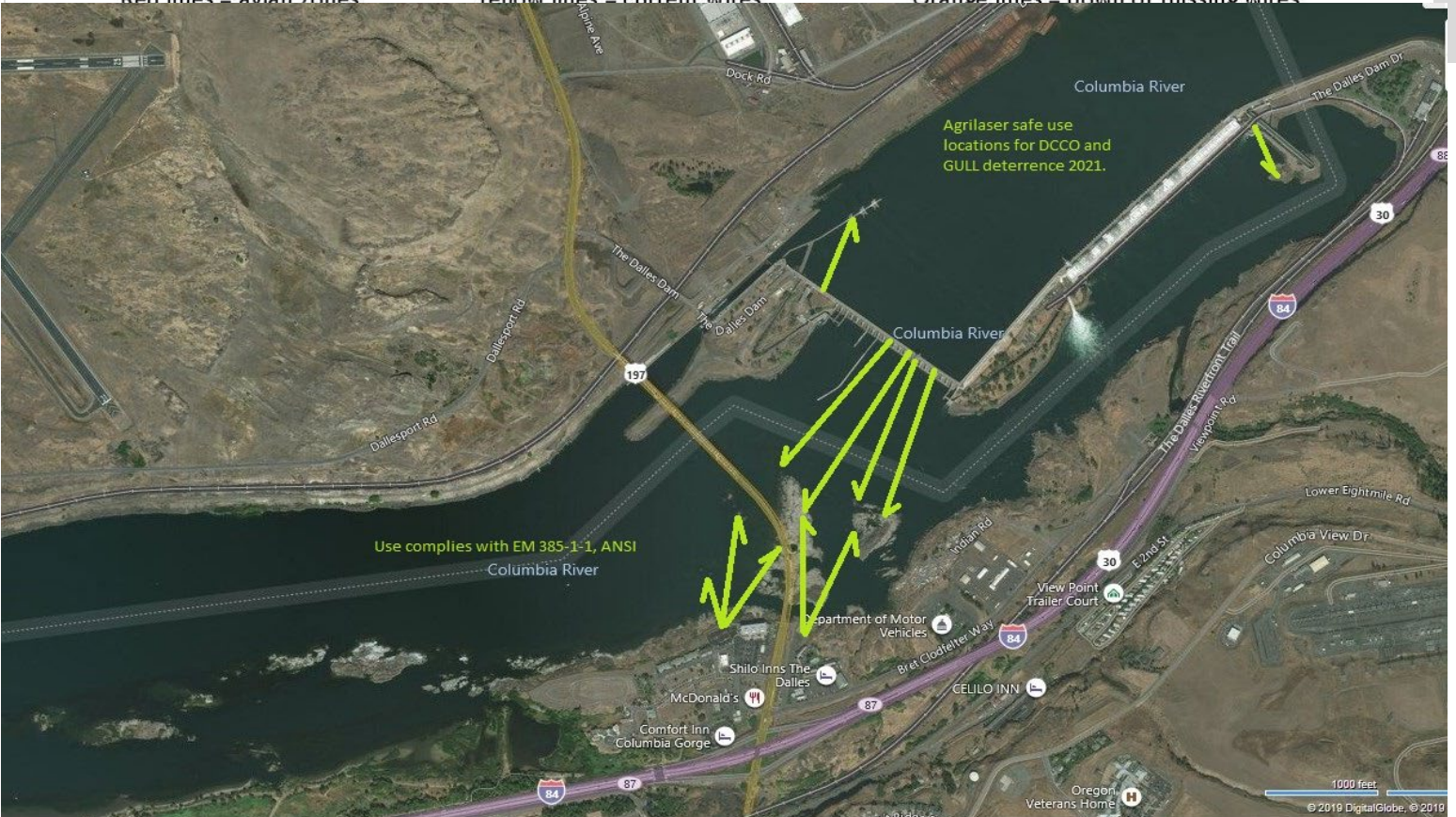
New Avian Lines and laser deterrent zones



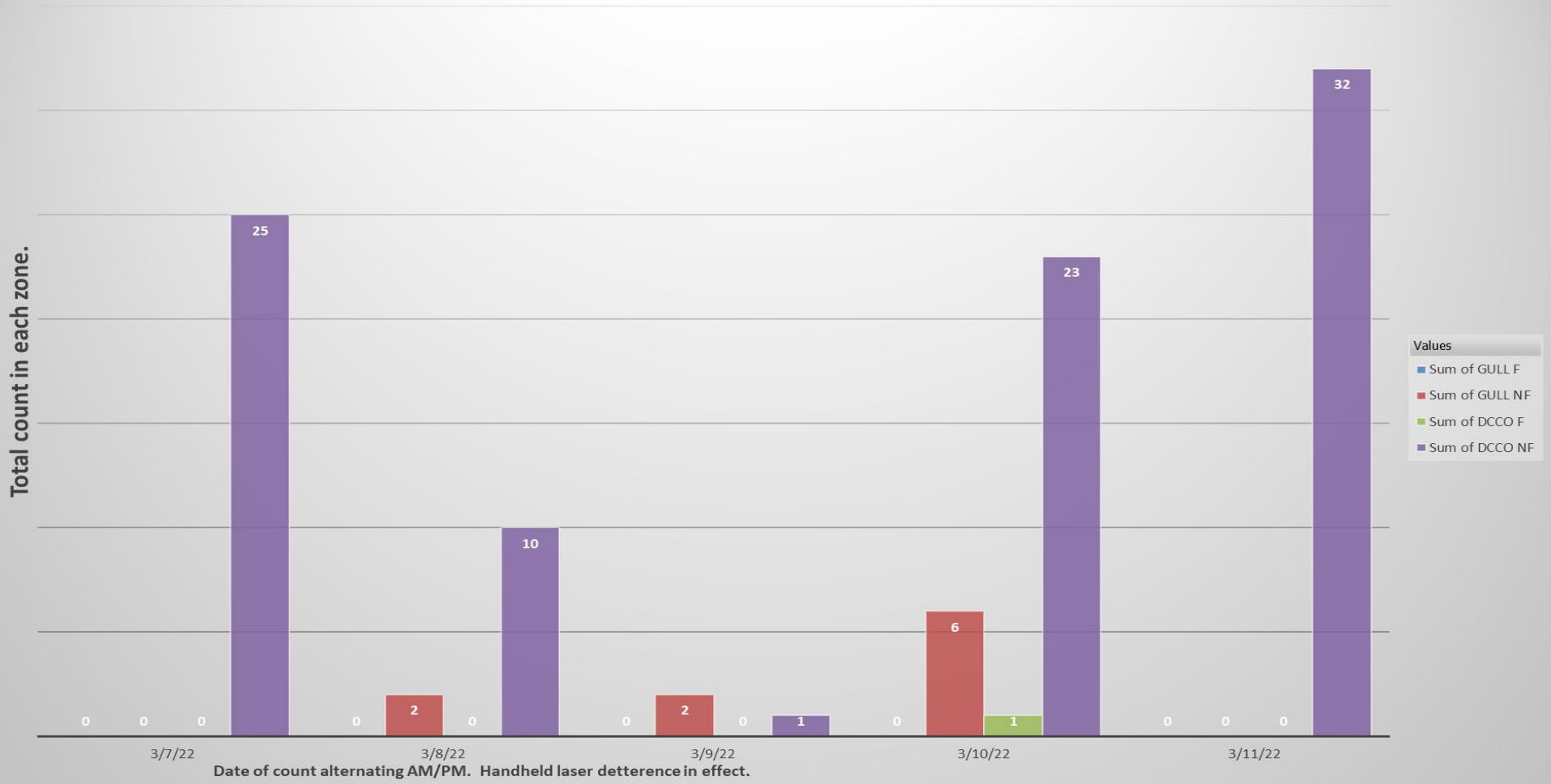
Red lines = avian zones

Yellow lines = current wires

Orange lines = down or missing wires

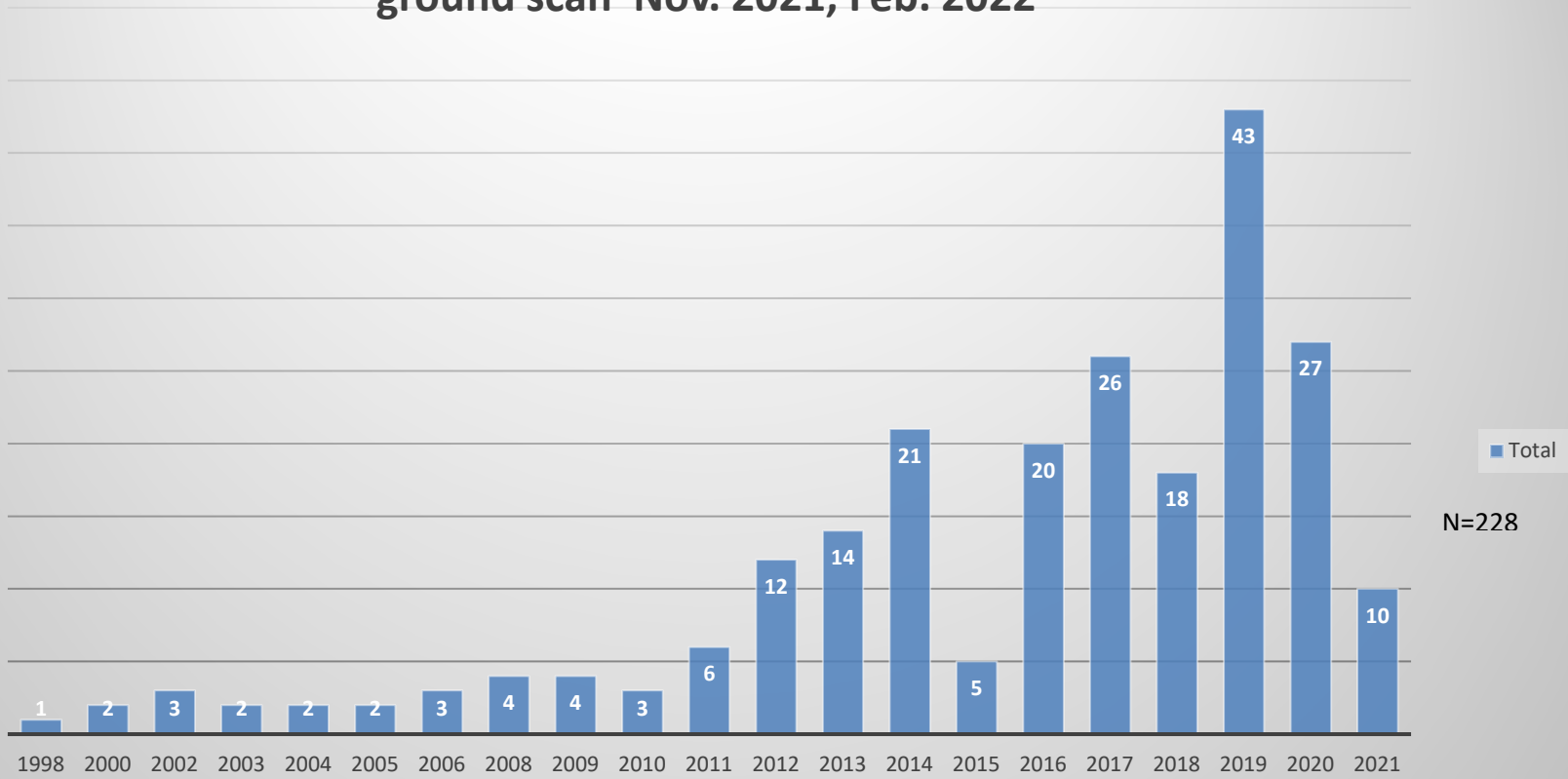


TDA Bird Count for dates 3/7 to 3/11/2022



MRR PIT juvenile salmon tags located on Lone Pine islands found by ground scan Nov. 2021, Feb. 2022

Number of MRR PIT tags found.

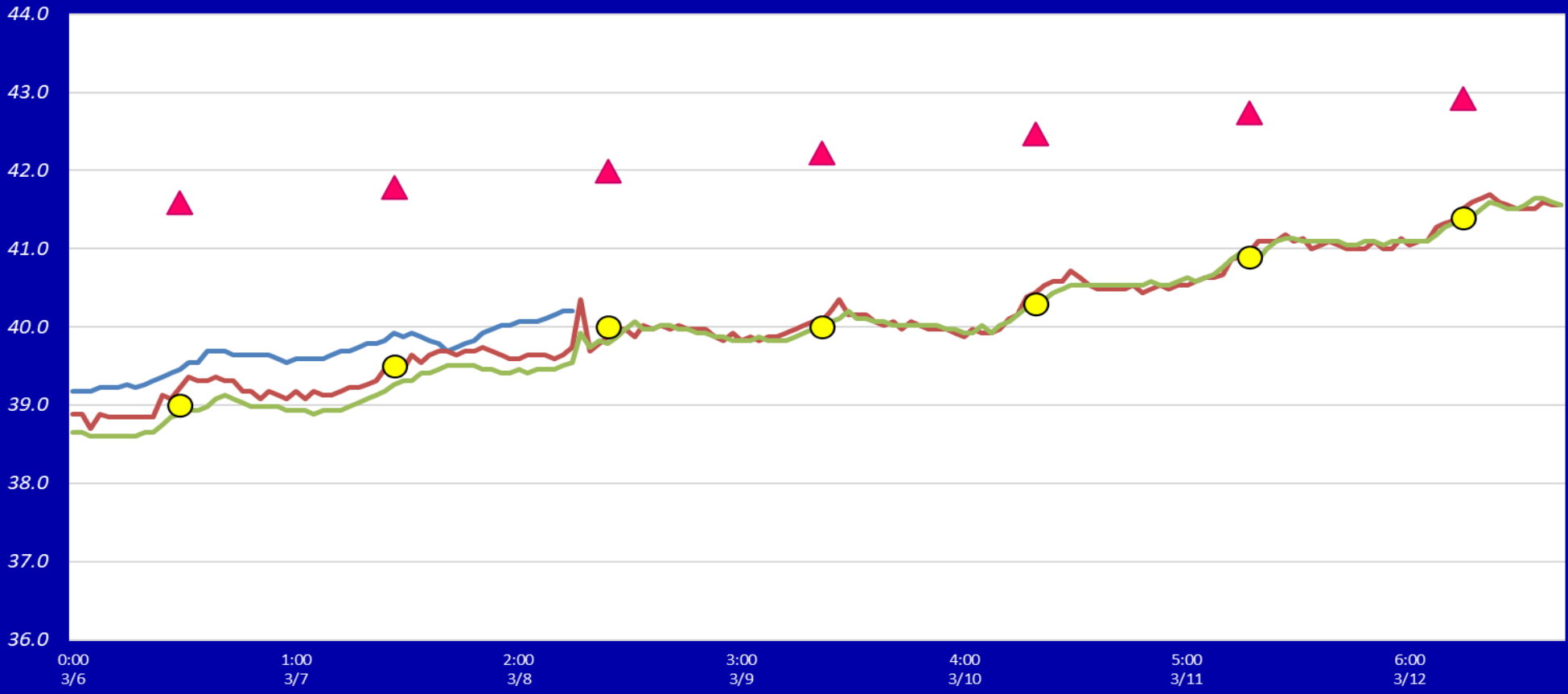


Year of mark release.

N=228

Adult Fish Ladders-River Temperatures

— North Count Station — East Count Station — North Entrance ● Current USGS Daily Average ▲ USGS Daily Average (2007-2021)



Secchi:		USGS°F
5.0	Sun	39.0
5.0	Mon	39.5
5.0	Tue	40.0
4.0	Wed	40.0
3.5	Thurs	40.3
4.0	Fri	40.9
4.0	Sat	41.4
4.4	median	40.0

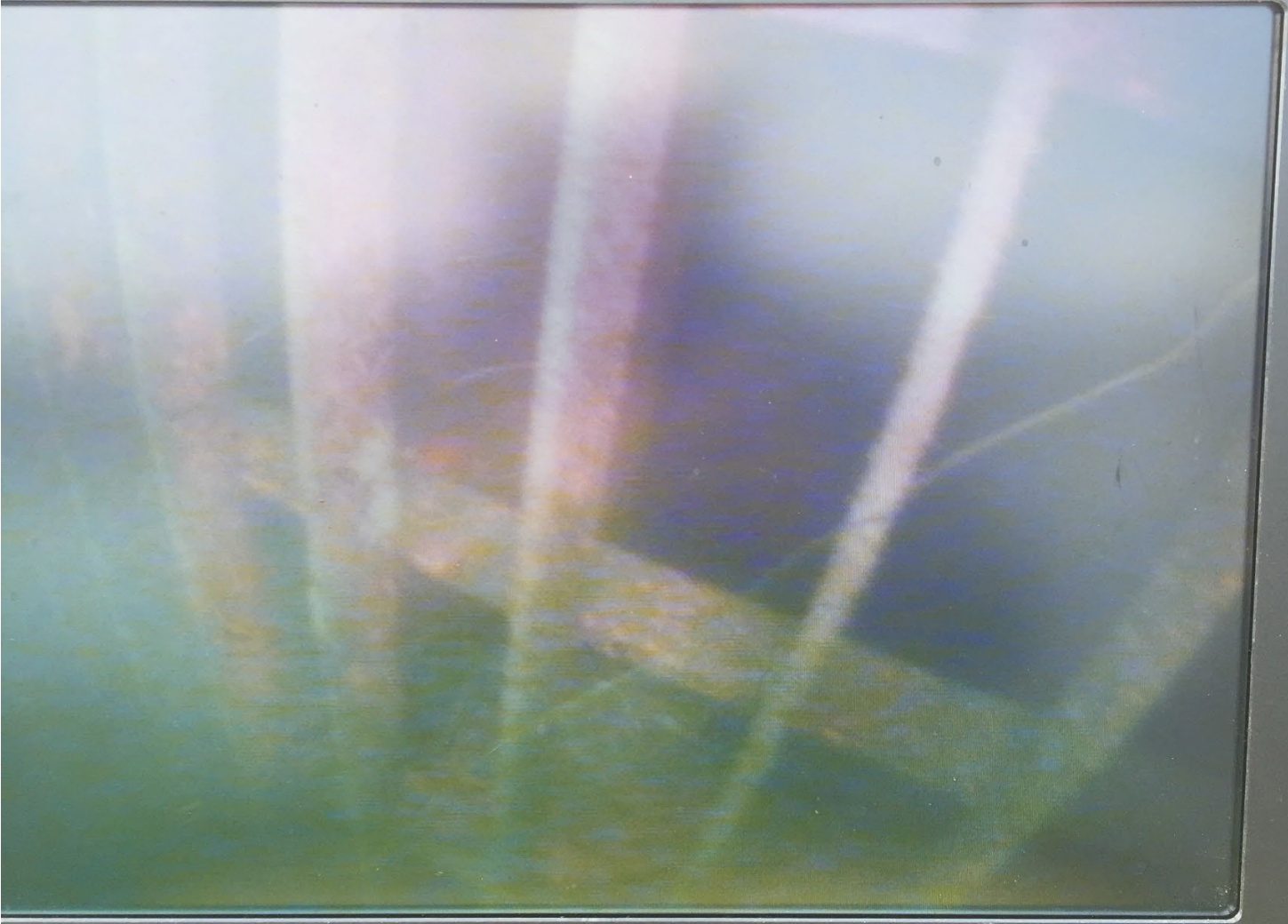
The Dalles Dam Daily Readings and Averages for
Temperatures, Secchi, Entrances, and Spill

out of criteria

Date:	North Ladder		East Ladder											
			East Entrance					West Entrance			South Entrance			
	Differential	N1 Depth	Differential	E1 Depth	E2 Depth	E3 Depth	JP 6	Differential	W1	W2	W3	Differential	S1	S2
3/6	1.3	10.0	1.6	10.5	10.1	10.2	12.2	1.6	9.1	9.2	-1.2	1.4	9.7	9.6
	1.3	10.1	1.6	10.4	10.0	10.1	12.1	1.5	9.3	9.4	-1.3	1.5	9.5	9.4
3/7	1.4	10.0	1.5	10.6	7.7	7.7	14.3	1.5	9.9	10.0	0.3	1.3	10.8	10.8
	1.3	10.0	1.7	4.3	11.0	11.4	12.4	1.7	9.2	9.4	-1.1	1.5	9.8	9.6
3/8	1.3	10.2	1.6	4.3	11.5	11.5	12.4	1.6	9.6	9.9	-1.3	1.5	9.4	9.3
	1.2	10.1	1.5	3.9	11.6	11.6	11.9	1.6	9.5	9.7	-1.7	1.5	9.1	9.0
3/9	1.3	10.1	1.6	4.9	10.9	10.9	12.9	1.6	9.5	9.6	-0.9	1.4	9.8	9.6
	1.3	10.0	1.4	4.2	11.8	11.9	12.2	1.5	9.6	9.8	-1.5	1.5	9.3	9.1
3/10	1.3	10.1	1.4	5.9	10.7	10.7	13.8	1.4	10.5	10.6	0.1	1.4	10.3	10.3
	1.3	10.1	1.5	4.1	11.8	12.0	12.1	1.3	10.3	10.6	-0.1	1.4	10.4	10.3
3/11	1.4	10.1	1.4	5.9	11.2	11.4	13.9	1.3	10.1	10.4	0.1	1.4	10.5	10.4
	1.3	10.1	1.7	4.5	11.0	11.2	12.5	1.7	9.0	9.3	-1.2	1.5	9.7	9.5
3/12	1.1	10.2	1.8	3.5	11.1	11.5	11.5	1.7	9.3	9.6	-2.1	1.7	8.6	8.5
	1.1	10.1	1.7	2.7	11.6	12.0	10.7	1.6	9.0	9.4	-2.9	1.6	8.2	8.1
AVG:	1.3	10.1	1.6	5.7	10.8	11.0	12.5	1.5	9.6	9.8	-1.1	1.5	9.6	9.5

Fishways are inspected once daily.

ROV inspection main unit intakes
picture reflects condition(s)



Vide

• • • • •
⏻ MENU SELECT ⏩