

The Dalles Dam Fishway Status Report

2/27/22

Inspection Period 2/20-2/26/2022

THE DALLES DAM



US Army Corps
of Engineers
Portland District

The Dalles Project-Fisheries
P.O. Box 564
The Dalles, OR 97058-9998
Phone: 541-506-3800

The Dalles Dam	Inspections OOC	Criteria Limit	Total Number of Inspections:		Temperature:	#REF!	°F
			Comments: anticipated fish season in sight		Weekly Ave. Secchi:		#REF!

NORTH FISHWAY

Exit differential	0	≤ 0.5'			
Count station differential	0	≤ 0.3'			
Weir crest depth	0	1.0' ± 0.1'			
Entrance weir N1	0	depth (≥ 8')		#REF!	
Entrance Differential	0	1.0' - 2.0'		#REF!	
Entrance weir N2	NA	Closed			
PUD Intake differential	0	≤ 0.5'			

EAST FISHWAY

Exit differential	0	≤ 0.5'			
Removable weirs 154-157	0	Per forebay			
Weir 158-159 differential	0	1.1' ± 0.1'			
Count station differential	0	≤ 0.3'			
153 Weir crest depth	0	1.0' ± 0.1'			
Junction pool weir JP6	0	> 7.0'	Weekly average	#REF!	
East entrance differential	0	1.0' - 2.0'	Weekly average	#REF!	
Entrance weir E1	0	No criteria	Weekly average	#REF!	
Entrance weir E2	0	depth (≥ 8')	Weekly average	#REF!	
Entrance weir E3	0	depth (≥ 8')	Weekly average	#REF!	
Collection channel velocity	0	1.5 - 4 fps	3.04fps 1/28/2022		
Transportation channel velocity	0	1.5 - 4 fps	2.81fps 2/26/2022		
North channel velocity	0	1.5 - 4 fps	2.7fps 2/26/2022		
South channel velocity	0	1.5 - 4 fps	3.91fps 2/22/2022		
West entrance differential	0	1.0' - 2.0'	Weekly average	#REF!	
Entrance weir W1	0	depth (≥ 8')	Weekly average	#REF!	
Entrance weir W2	0	depth (≥ 8')	Weekly average	#REF!	
Entrance weir W3	0	No criteria	Weekly average	#REF!	
South entrance differential	0	1.0' - 2.0'	Weekly average	#REF!	
Entrance weir S1	0	depth (≥ 8')	Weekly average	#REF!	
Entrance weir S2	0	depth (≥ 8')	Weekly average	#REF!	

JUVENILE BYPASS

Sluicgate operation	0	Units 1,8, 18	Gates over MU1 ,MU18-3 open. Endgate closed Dec16 Reopens Mar1		
Turbine trashrack drawdown	0	<1.5', biwkly			
Spill volume/pattern	0	1 to 8	Spill closed		
Turbine Unit Priority	0	per FPP	Resumes Mar1		
Gatewells	0	Weekly	Some debris in gatewells, no fish mortality 2/26/2022		

OTHER ISSUES:

Current Unit Outages

T10 (MU19 & 20) FOOS through 10/27/2022 due to acetylene levels
MU12 OOS 4/12/2021 – 10/27/2022 for Annual & Cooler Upgrades
MU19 OOS 6/27/2021 – 10/27/2022 for Top Plate Cover Upgrade
Navlock outage Feb13-Mar19

Maintenance

Permanent oil boom removed from east exit for repairs. Planning install with attachment redesign and fabrication. Install TBD.
Fishway automation replacement work continues. East and north fishway complete. Working on connection to fish office.
Spillway assessment (MRER); Spillgates 1- 9 rehab date estimate 2034. Includes replacement of spillbay 9 trunnion pin repair. Spillway crane top priority
Calibrations on east fishway entrances are being monitored and will need slight adjustments by TDE 2/26/22.

Predators

Resident cormorants in lower numbers than previous years, foraging in SW3. Bald eagles seen occasionally over forebay.
California gulls returning to resting areas in SW4 with little to no foraging observed.....yet
Planning removal of bass/walleye/catfish from all dewaterings for gut sample analysis. Fish Passage Plan 2022 approved. Permitting in progress.

Research/Construction/Contractors

[TD-USGS °F](#)

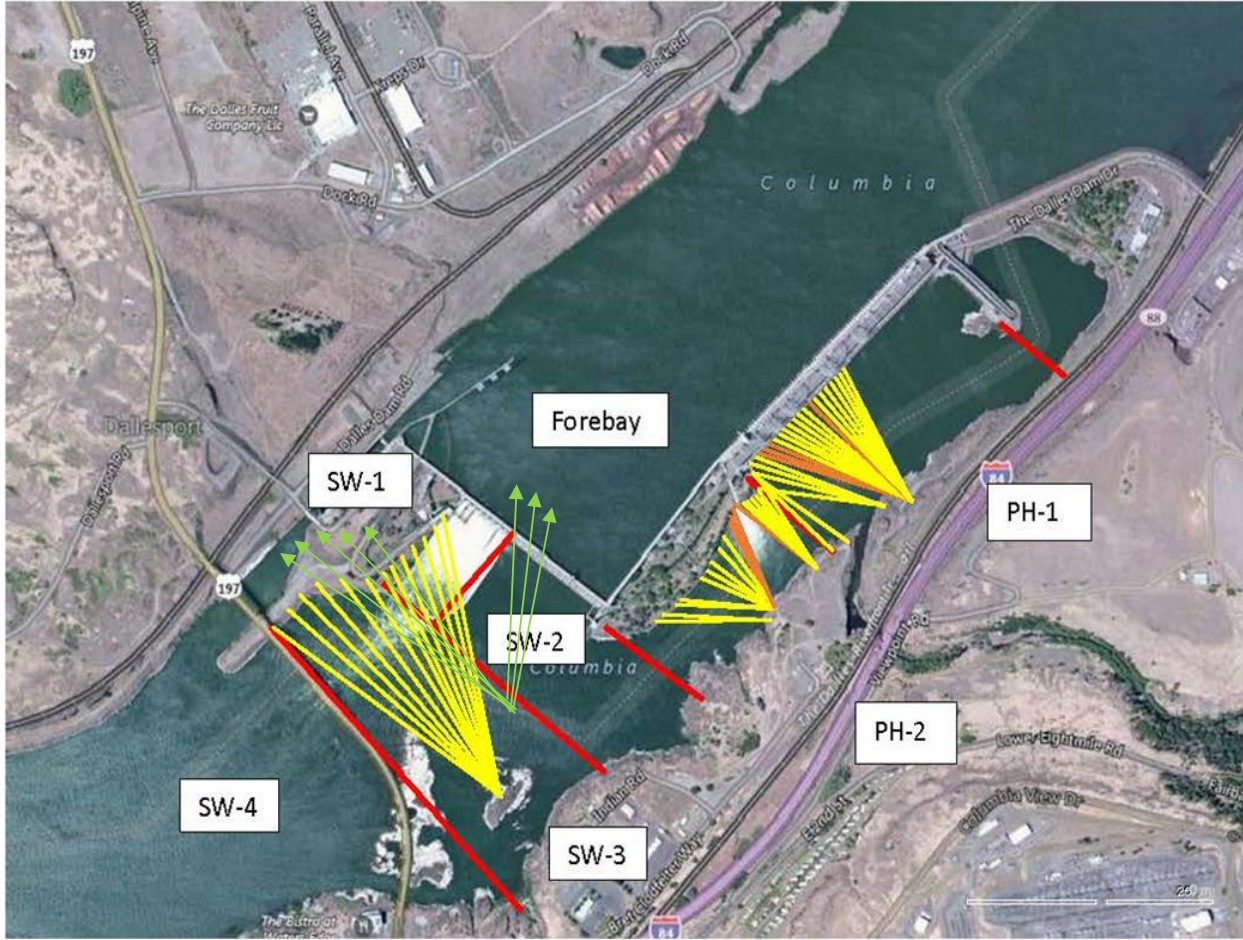
AWS intake trashrack debris issue - No funding FY22.
Fish Accords Lamprey Passage plan ongoing at 30% DDR junction pool LPS. Also working on potential entrance weir guide plating design.
PITAGS fishladder data collection at in service count station continues.
Fish unit rehab - Phase 1A on hold. Date to be determined. Planning operation with AWS backup water supply during construction.
Northern Pikeminnow Management Program to resume this spring. We continue to request bass/walleye removal.
PUD concrete form work complete for new juvenile sampling facility. Installing swich gate. Reinstalling brackets for transport pipe.
4 peaks preparing for video count in March. Visual counting starts Apr1.

Fishway Operations

Velocity measurements using new flow meter being developed.
East fishway in full service. North dewatered for annual maintenance.
Ice Trash sluiceway endgate closed. MU1 and 18-3 intakes opened for fish egress.
Gatewells accumulating some debris and one dead DCCO found in MU2-2 gatewell.

Approved by: Ron Twiner, Operation Project Manager, The Dalles Dam

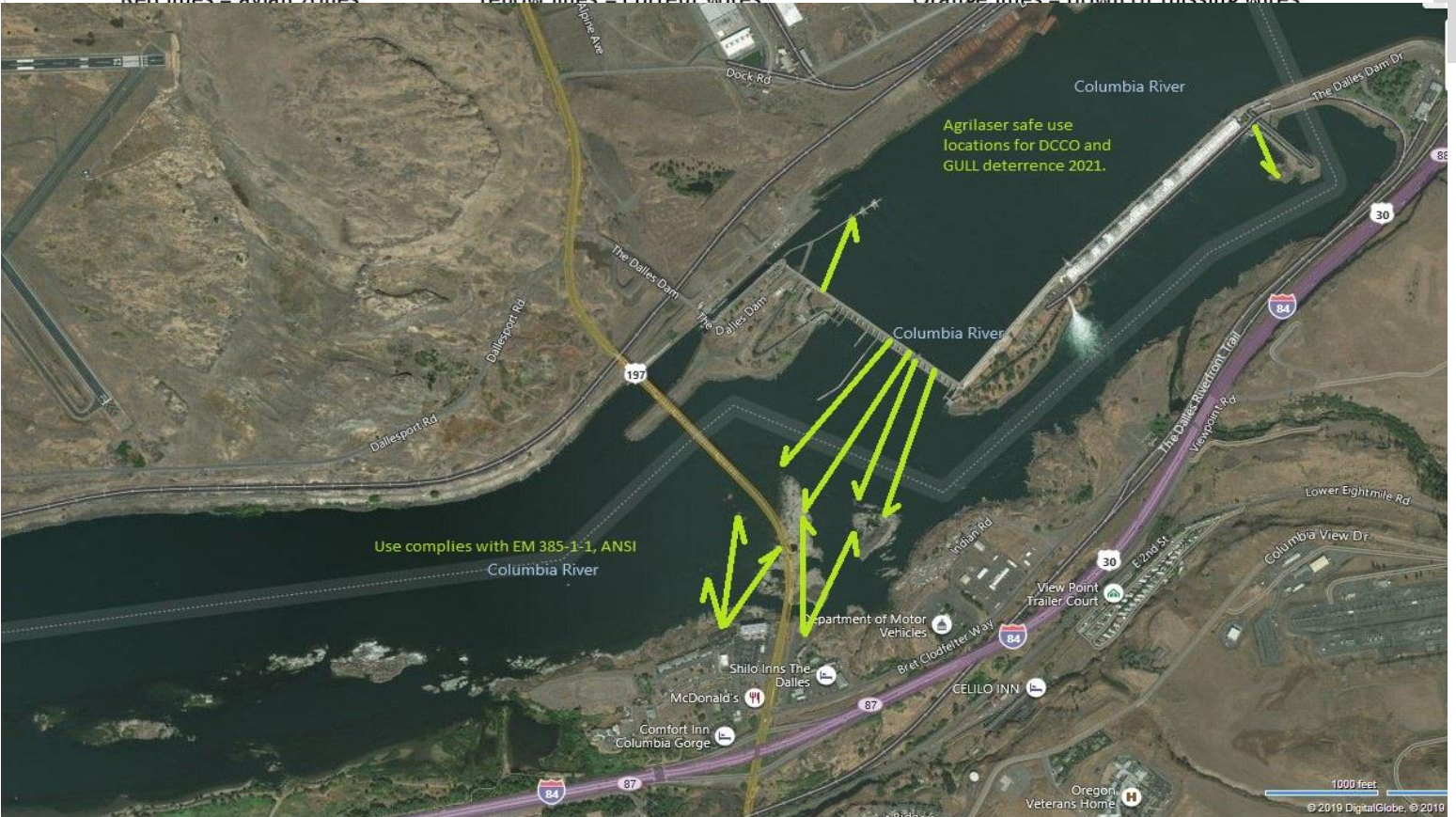
New Avian Lines and laser deterrent zones



Red lines = avian zones

Yellow lines = current wires

Orange lines = down or missing wires

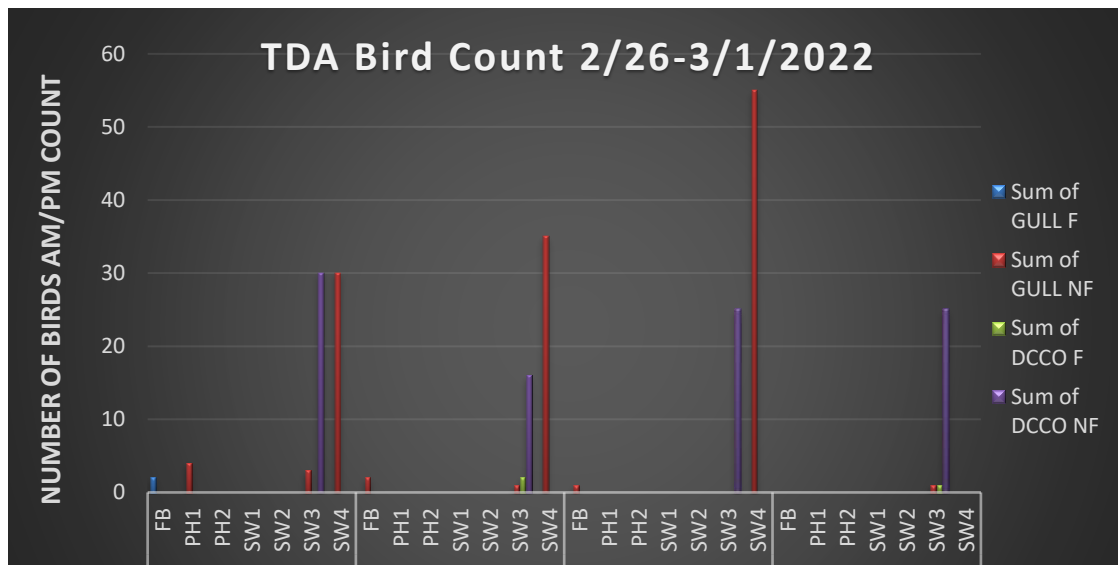


Use complies with EM 385-1-1, ANSI

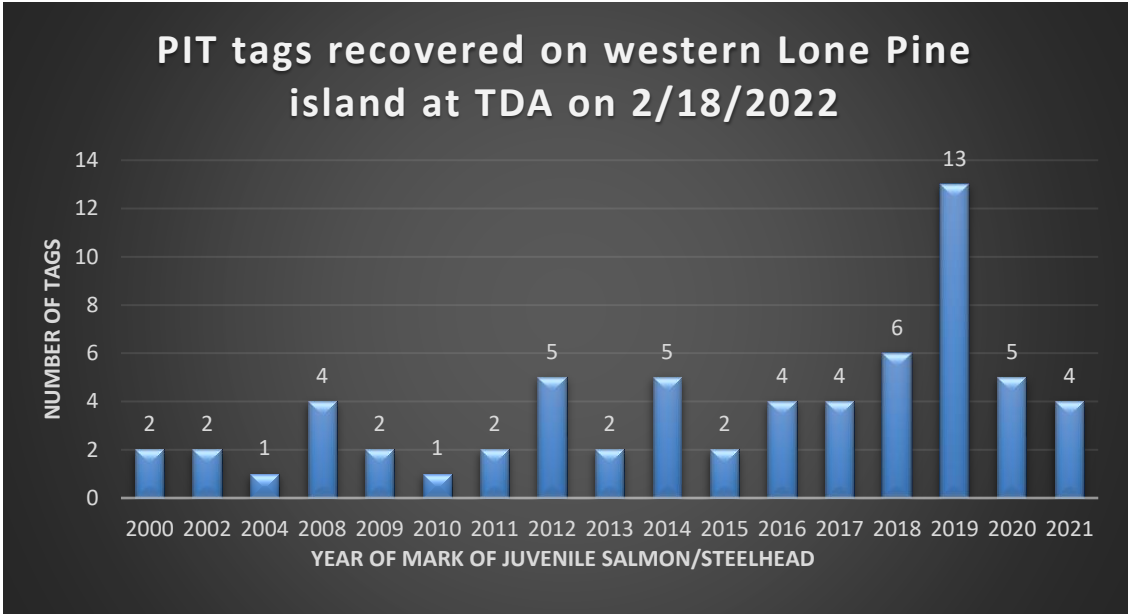
Agrilaser safe use locations for DCCO and GULL deterrence 2021.

F=foraging, NF=non-fc

Date	Observer	Time	ZONE	GULL F	GULL NF	DCCO F	DCCO NF	TERN F	TERN NF
2/26	JED	PM	FB	2	0	0	0	0	0
2/26			PH1	0	4	0	0	0	0
2/26			PH2	0	0	0	0	0	0
2/26			SW1	0	0	0	0	0	0
2/26			SW2	0	0	0	0	0	0
2/26			SW3	0	3	0	30	0	0
2/26			SW4	0	30	0	0	0	0
2/27	JED	PM	FB	0	2	0	0	0	0
2/27			PH1	0	0	0	0	0	0
2/27			PH2	0	0	0	0	0	0
2/27			SW1	0	0	0	0	0	0
2/27			SW2	0	0	0	0	0	0
2/27			SW3	0	1	2	16	0	0
2/27			SW4	0	35	0	0	0	0
2/28	JED	AM	FB	0	1	0	0	0	0
2/28			PH1	0	0	0	0	0	0
2/28			PH2	0	0	0	0	0	0
2/28			SW1	0	0	0	0	0	0
2/28			SW2	0	0	0	0	0	0
2/28			SW3	0	0	0	25	0	0
2/28			SW4	0	55	0	0	0	0
3/1	JED	PM	FB	0	0	0	0	0	0
3/1			PH1	0	0	0	0	0	0
3/1			PH2	0	0	0	0	0	0
3/1			SW1	0	0	0	0	0	0
3/1			SW2	0	0	0	0	0	0
3/1			SW3	0	1	1	25	0	0
3/1			SW4	0	0	0	0	0	0



2/26	2/27	2/28	3/1
DATE OF COUNT			



Row Labels	Sum of GULL F	Sum of GULL NF	Sum of DCCO F	Sum of DCCO NF
2/26	2	37	0	30
FB	2	0	0	0
PH1	0	4	0	0
PH2	0	0	0	0
SW1	0	0	0	0
SW2	0	0	0	0
SW3	0	3	0	30
SW4	0	30	0	0
2/27	0	38	2	16
FB	0	2	0	0
PH1	0	0	0	0
PH2	0	0	0	0
SW1	0	0	0	0
SW2	0	0	0	0
SW3	0	1	2	16
SW4	0	35	0	0
2/28	0	56	0	25
FB	0	1	0	0
PH1	0	0	0	0
PH2	0	0	0	0
SW1	0	0	0	0
SW2	0	0	0	0
SW3	0	0	0	25
SW4	0	55	0	0
3/1	0	1	1	25
FB	0	0	0	0
PH1	0	0	0	0
PH2	0	0	0	0
SW1	0	0	0	0
SW2	0	0	0	0
SW3	0	1	1	25
SW4	0	0	0	0
Grand Total	2	132	3	96



Northern Pintail in the FB briefly on 3/1/2022. Not common in this area.

https://www.allaboutbirds.org/guide/Northern_Pintail