

The Dalles Dam Fishway Status Report

2/14/22

Inspection Period 2/6-2/12/2022

THE DALLES DAM



The Dalles Project-Fisheries
P.O. Box 564
The Dalles, OR 97058-9998
Phone: 541-506-3800

The Dalles Dam	Inspections OOC	Criteria Limit	Total Number of Inspections: 7		Temperature: 37.9 °F
			Comments: EFL In service, NFL OOS		Weekly Ave. Secchi: #DIV/0!

NORTH FISHWAY OOS 1/11/2022

Exit differential		≤ 0.5'	NFL OOS		
Count station differential		≤ 0.3'			
Weir crest depth		1.0' ± 0.1'			
Entrance weir N1		depth (≥ 8')	Weekly average	#DIV/0!	NFL OOS
Entrance Differential			1.0' - 2.0'	Weekly average	
Entrance weir N2		Closed			
PUD Intake differential		≤ 0.5'			

EAST FISHWAY - Returned to service 1/10/2022

Exit differential	0	≤ 0.5'			
Removable weirs 154-157	0	Per forebay			
Weir 158-159 differential	0	1.1' ± 0.1'			
Count station differential	0	≤ 0.3'			
153 Weir crest depth	0	1.0' ± 0.1'			
Junction pool weir JP6	0	> 7.0'	Weekly average	11.8	
East entrance differential	0	1.0' - 2.0'	Weekly average	1.5	
Entrance weir E1	0	No criteria	Weekly average	-1.7	
Entrance weir E2	0	depth (≥ 8')	Weekly average	12.7	
Entrance weir E3	0	depth (≥ 8')	Weekly average	12.7	
Collection channel velocity	0	1.5 - 4 fps	3.04fps 1/28/2022		
Transportation channel velocity	0	1.5 - 4 fps	2.87fps 1/29/2022		
North channel velocity	0	1.5 - 4 fps	Dewatered		
South channel velocity	0	1.5 - 4 fps	4.15fps 1/29/2022		
West entrance differential	0	1.0' - 2.0'	Weekly average	1.5	
Entrance weir W1	0	depth (≥ 8')	Weekly average	10.0	
Entrance weir W2	0	depth (≥ 8')	Weekly average	10.0	
Entrance weir W3	0	No criteria	Weekly average	-2.0	
South entrance differential	0	1.0' - 2.0'	Weekly average	1.5	
Entrance weir S1	0	depth (≥ 8')	Weekly average	9.2	
Entrance weir S2	0	depth (≥ 8')	Weekly average	9.3	

JUVENILE BYPASS

Sluiceway operation	0	Units 1,8, 18	Gates over MU1 ,MU18-3 open. Endgate closed Dec16		
Turbine trashrack drawdown	0	<1.5', biwkly			
Spill volume/pattern	0	1 to 8	Spill closed 9/1/21		
Turbine Unit Priority	0	per FPP	MU 3 OOS due to Overhaul RTS 3/13/2022.		
Gatewells	0	Weekly			

OTHER ISSUES:

Current Unit Outages

MU1 12/07/2021 - 02/03/2022 for 6 Year Overhaul
MU15 FOOS 2/12/2022 1625 – 2/14/2022 1700
MU3 OOS 2/7/2022 0630 – 3/17/2022 1700 6 YEAR
T10 (MU19 & 20) FOOS through 10/27/2022 due to acetylene levels
MU11 OOS 2/7/2022 0630 – 2/17/2022 1700 ANNUAL AND T-6 3A
MU12 OOS 4/12/2021 – 10/27/2022 for Annual & Cooler Upgrades
MU19 OOS 6/27/2021 – 10/27/2022 for Top Plate Cover Upgrade
Navlock outage Feb13-Mar19
North fishladder OOS Jan11-Feb16

Maintenance

Permanent oil boom removed from east exit for repairs. Planning install with attachment redesign.
Fishway automation replacement work continues. East fishway complete. North in progress.
North fishladder maintenance; Vegetation removal at bend of north fishladder complete, repair of count station picket shims, removal debris at exit.
Spillway assessment (MRER); Spillgates 1- 9 rehab date estimate 2034. Includes replacement of spillbay 9 trunnion pin repair. Spillway crane top priority

Predators

Resident cormorants in lower numbers than previous years. Bald eagles are gone. Pair of perigrine falcons seen in SW4.
California gulls returning to resting areas in SW4 with little to no foraging observed.
Planning removal of bass/walleye/catfish dewaterings for gut sample analysis. Fish Passage Plan approved.

Research/Construction/Contractors

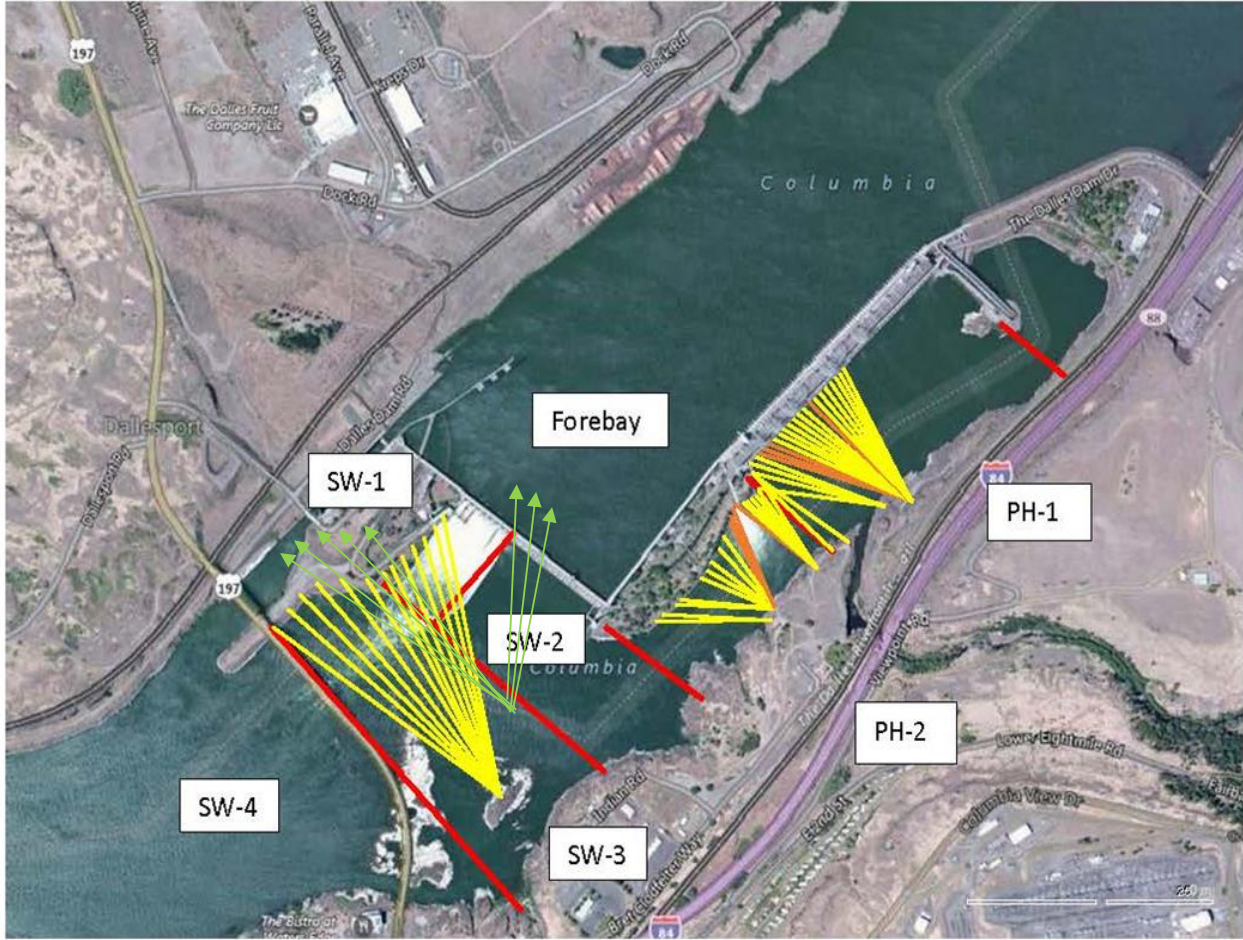
[TD-USGS °F](#)
AWS intake trashrack debris issue - No funding FY22.
Fish Accords Lamprey Passage plan ongoing at 30% DDR junction pool LPS. Also working on potential entrance weir guide plating design.
PITAGS fishladder data collection at in service count station continues.
Fish unit rehab - Phase 1A on hold. Date to be determined. Planning operation with AWS backup water supply during construction.
Northern Pikeminnow Management Program season concluded w/1384 native pikeminnow removed. We continue to request bass/walleye removal.
PUD concrete form work underway for new juvenile sampling facility. Reinstalling brackets for transport pipe.

Fishway Operations

Velocity measurements comparison using new flow meter comparing with float time method. Considering options to impliment.
East fishway in full service. North dewatered for annual maintenance.
Ice Trash sluiceway endgate closed. MU1 and 18-3 intakes opened for fish egress.

Approved by: Ron Twiner, Operation Project Manager, The Dalles Dam

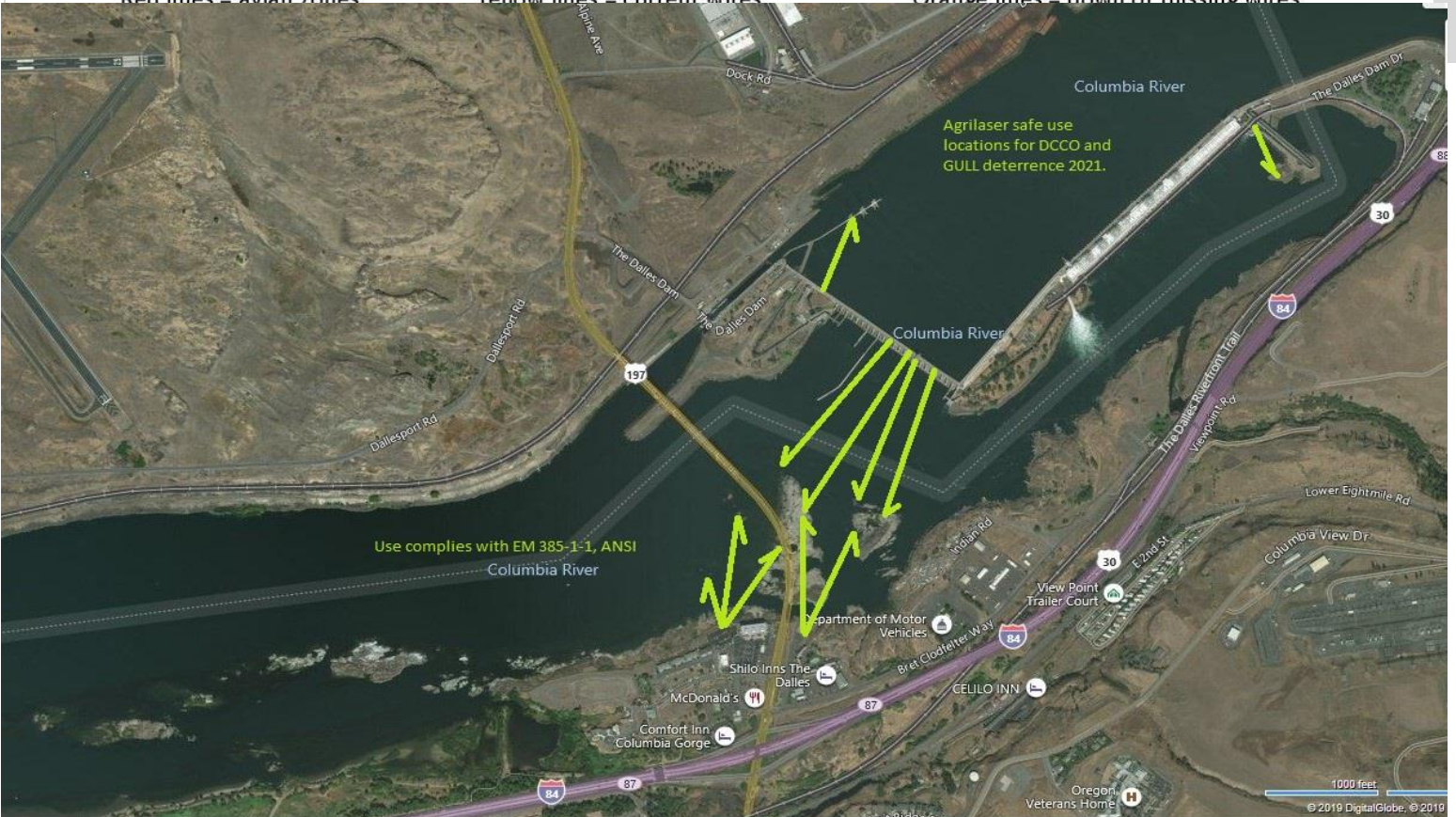
New Avian Lines and laser deterrent zones



Red lines = avian zones

Yellow lines = current wires

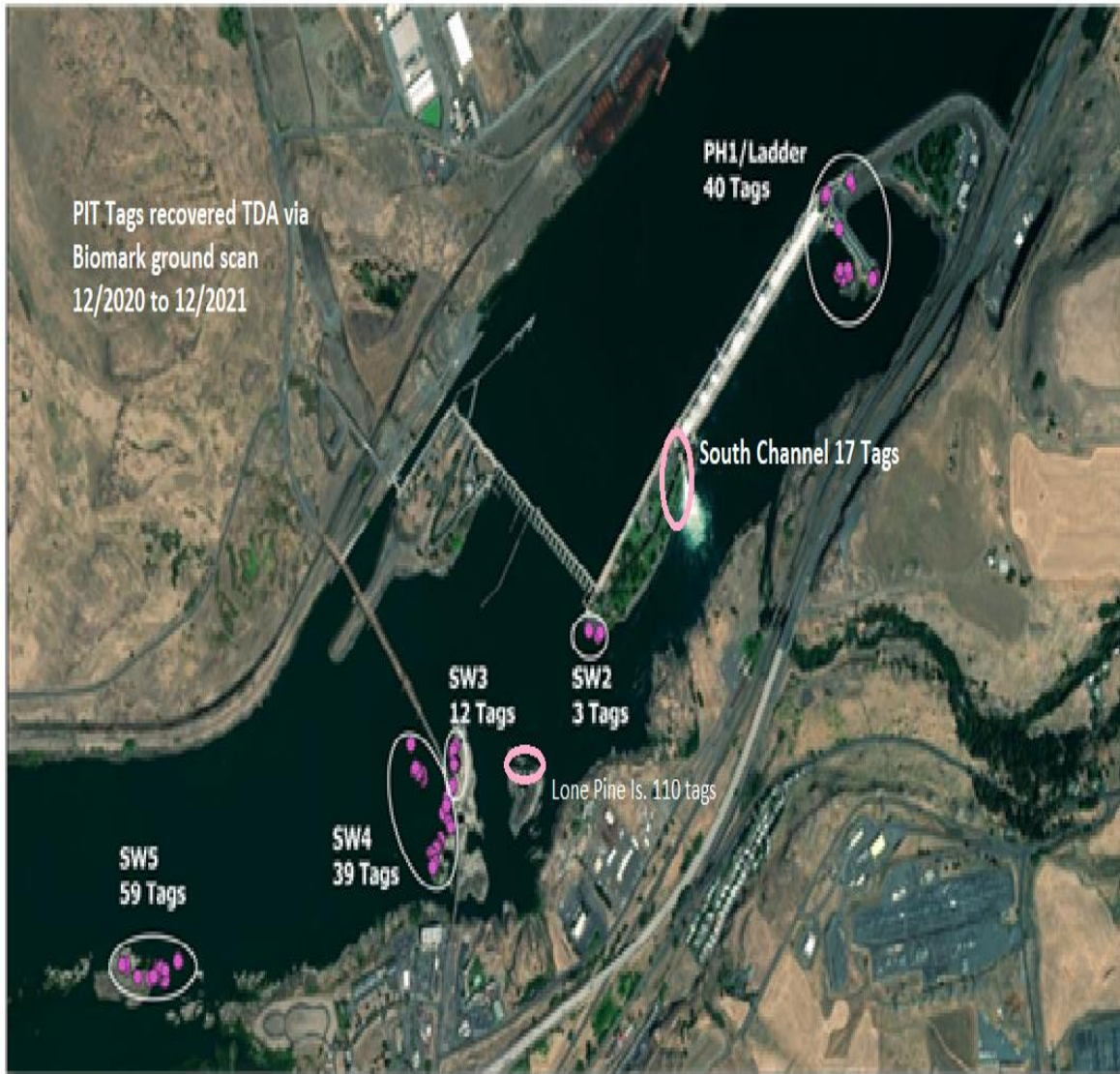
Orange lines = down or missing wires



Use complies with EM 385-1-1, ANSI

Agrilaser safe use locations for DCCO and GULL deterrence 2021.

95 PIT tag recoveries uploaded to PTAGIS website TDLPI event site Lone Pine Is.



NF
35
 0
 0
 0
 0
 0
 35
 0
20
 0
 0
 0
 0
 0
 20

SW4	0	50	0	0
2/9	0	42	0	18
FB	0	2	0	0
PH1	0	0	0	3
PH2	0	0	0	0
SW1	0	0	0	0
SW2	0	0	0	0
SW3	0	0	0	15
SW4	0	40	0	0
Grand Total	0	101	0	73



Recovery sites created to upload PIT tag recovery (MRR) data.

Secchi:		USGS°F
	Sun	38.2
	Mon	38.2
	Tue	38.0
	Wed	37.8
	Thurs	37.9
	Fri	37.8
	Sat	37.9
#DIV/0!	median	37.9

The Dalles Dam Daily Readings and Averages for
Temperatures, Secchi, Entrances, and Spill

out of criteria

Date:	North Ladder		East Ladder											
	Differential	N1 Depth	East Entrance					West Entrance			South Entrance			
			Differential	E1 Depth	E2 Depth	E3 Depth	JP 6	Differential	W1	W2	W3	Differential	S1	S2
2/6	Dewatered		1.5	-6.0	13.3	13.3	11.4	1.5	9.7	9.6	-2.6	1.5	8.8	8.8
2/7			1.5	-6.0	13.0	13.0	11.4	1.6	9.7	9.6	-2.8	1.5	8.8	8.8
2/8			1.6	0.0	11.9	11.9	12.5	1.4	10.6	10.5	-1.2	1.5	9.6	9.6
2/9			1.6	0.2	12.1	12.2	11.2	1.7	9.4	9.3	-2.4	1.6	8.9	8.8
2/10			1.3	1.6	12.7	12.8	12.6	1.3	10.7	10.6	-1.2	1.4	10.1	10.2
2/11			1.6	-1.4	12.7	12.8	11.2	1.6	9.5	9.5	-2.4	1.5	9.0	9.1
2/12			1.5	-0.6	13.2	13.2	12.0	1.3	10.7	10.7	-1.6	1.4	9.5	9.6
AVG:		#DIV/0!	#DIV/0!	1.5	-1.7	12.7	12.7	11.8	1.5	10.0	10.0	-2.0	1.5	9.2

Fishways are inspected once daily.



New PUD bypass switch gate ready for install.