

# The Dalles Dam Fishway Status Report

1/30/22

Inspection Period: 1/23 - 1/29/2022

## THE DALLES DAM



The Dalles Project-Fisheries  
 P.O. Box 564  
 The Dalles, OR 97058-9998  
 Phone: 541-506-3800

<b>The Dalles Dam</b>	Inspections OOC	Criteria Limit	<b>Total Number of Inspections:</b> 9		<b>Temperature:</b> 38.3 °F
			<b>Comments:</b> EFL In service, NFL OOS		<b>Weekly Ave. Secchi:</b> #DIV/0!

### NORTH FISHWAY OOS 1/11/2022

Exit differential		≤ 0.5'	NFL OOS		
Count station differential		≤ 0.3'			
Weir crest depth		1.0' ± 0.1'			
Entrance weir N1		depth (≥ 8')	Weekly average	#DIV/0!	NFL OOS
Entrance Differential			1.0' - 2.0'	Weekly average	
Entrance weir N2		Closed			
PUD Intake differential		≤ 0.5'			

### EAST FISHWAY - Returned to service 1/10/2022

Exit differential	0	≤ 0.5'			
Removable weirs 154-157	0	Per forebay			
Weir 158-159 differential	0	1.1' ± 0.1'			
Count station differential	0	≤ 0.3'			
153 Weir crest depth	0	1.0' ± 0.1'			
Junction pool weir JP6	0	> 7.0'	Weekly average	13.2	
East entrance differential	0	1.0' - 2.0'	Weekly average	1.4	
Entrance weir E1	0	No criteria	Weekly average	7.3	
Entrance weir E2	0	depth (≥ 8')	Weekly average	9.6	
Entrance weir E3	0	depth (≥ 8')	Weekly average	10.7	
Collection channel velocity	0	1.5 - 4 fps	3.04fps 1/28/2022		
Transportation channel velocity	0	1.5 - 4 fps	2.87fps 1/29/2022		
North channel velocity	0	1.5 - 4 fps	Dewatered		
South channel velocity	1	1.5 - 4 fps	4.15fps 1/29/2022		
West entrance differential	1	1.0' - 2.0'	Weekly average	1.2	
Entrance weir W1	0	depth (≥ 8')	Weekly average	10.0	
Entrance weir W2	0	depth (≥ 8')	Weekly average	10.9	
Entrance weir W3	0	No criteria	Weekly average	3.6	
South entrance differential	0	1.0' - 2.0'	Weekly average	1.4	
Entrance weir S1	0	depth (≥ 8')	Weekly average	10.2	
Entrance weir S2	0	depth (≥ 8')	Weekly average	10.2	

### JUVENILE BYPASS

Sluiceway operation	0	Units 1,8, 18	Gates over MU1 ,MU18-3 open. Endgate closed Dec16		
Turbine trashrack drawdown	0	<1.5', biwkly			
Spill volume/pattern	0	1 to 8	Spill closed 9/1/21		
Turbine Unit Priority	0	per FPP	MU 1 OOS due to Overhaul RTS 2/3/2022.		
Gatewells	0	Weekly			

## OTHER ISSUES:

### **Current Unit Outages**

MU1 12/07/2021 - 02/03/2022 for 6 Year Overhaul  
T10 (MU19 & 20) FOOS through 10/27/2022 due to acetylene levels  
MU12 OOS 4/12/2021 – 10/27/2022 for Annual & Cooler Upgrades  
MU19 OOS 6/27/2021 – 10/27/2022 for Top Plate Cover Upgrade  
Navlock outage Feb 13-Mar19  
North fishladder OOS Jan11-Mid Feb  
MU11 FOOS 02/01/2022 0521 - 02/02/2022 1700 for Turbine Pit Flooding

### **Maintenance**

Permanent oil boom removed from east exit for repairs. Engineering exploring redesign options.  
Fishway automation replacement work continues. East fishway near complete. North in progress.  
Planning for some vegetation removal north fishladder.  
Spillway assessment (MRER); Spillgates 1- 9 rehab date estimate 2034. Includes replacement of spillbay 9 trunnion pin repair  
Some minor entrance weir calibrations out still being finalized.  
West entrance in manual control while TDE continues Automation installation.

### **Predators**

Resident cormorants in lower numbers than previous years. Bald eagles dispersing.  
California gulls returning to resting areas in SW4 with little to no foraging observed.

### **Research/Construction/Contractors**

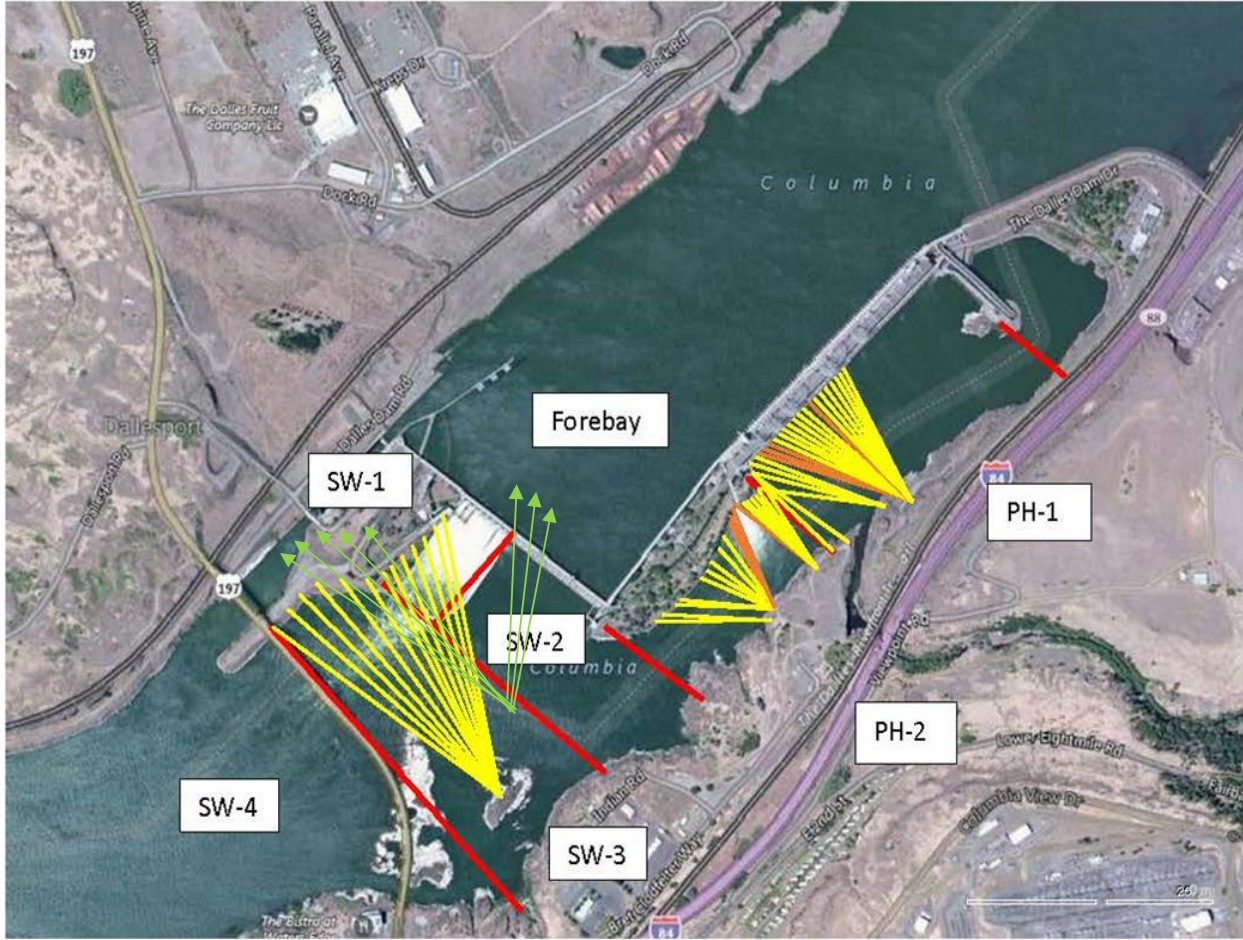
[TD-USGS °F](#)  
AWS intake trashrack debris issue - No funding FY22.  
Fish Accords Lamprey Passage plan ongoing at 30% DDR junction pool LPS. Also working on potential entrance weir guide plating design.  
PITAGS fishladder data collection at in service count station continues.  
Fish unit rehab - Phase 1A on hold. Date to be determined. Planning operation with AWS backup water supply during construction.  
Northern Pikeminnow Management Program season concluded w/1384 native pikeminnow removed. We continue to request bass/walleye removal.  
PUD concrete form work underway for new juvenile sampling facility.

### **Fishway Operations**

Velocity measurements made repeatedly using new flow meter comparing with float time method. Considering options to impliment.  
East fishway in full service. North dewatered for annual maintenance.  
Ice Trash sluiceway endgate closed. MU1 and 18-3 intakes opened for fish egress.

Approved by: Ron Twiner, Operation Project Manager, The Dalles Dam

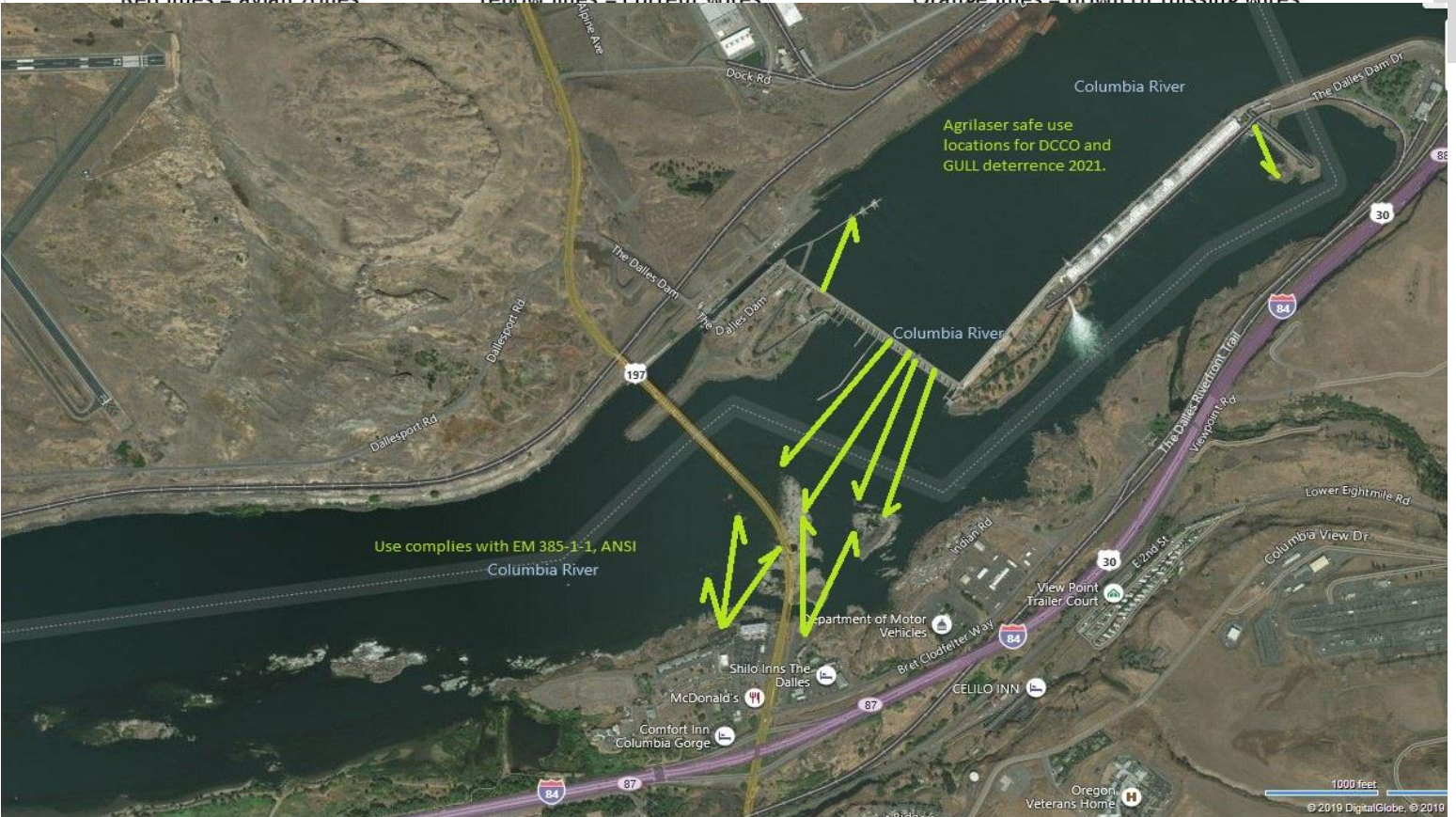
New Avian Lines and laser deterrent zones



Red lines = avian zones

Yellow lines = current wires

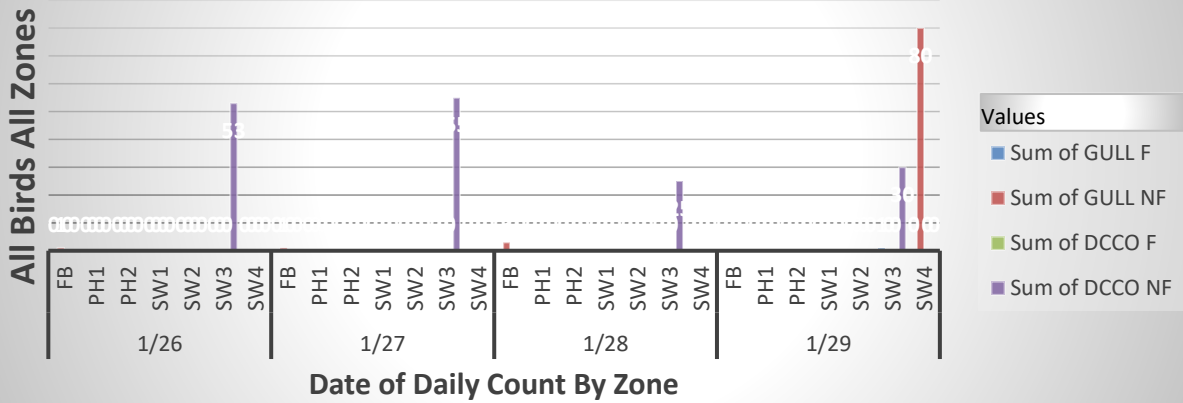
Orange lines = down or missing wires



Use complies with EM 385-1-1, ANSI

Agrilaser safe use locations for DCCO and GULL deterrence 2021.

## TDA Predatory Birds in all Zone 1/26-1/29 Welcome Back CAGU, So Long WEGU



, NF=non-foraging									
Date	Observer	Time	ZONE	GULL F	GULL NF	DCCO F	DCCO NF	TERN F	TERN NF
1/26	JED	PM	FB	0	1	0	0	0	0
1/26			PH1	0	0	0	0	0	0
1/26			PH2	0	0	0	0	0	0
1/26			SW1	0	0	0	0	0	0
1/26			SW2	0	0	0	0	0	0
1/26			SW3	0	0	0	53	0	0
1/26			SW4	0	0	0	0	0	0
1/27	JED	AM	FB	0	1	0	0	0	0
1/27			PH1	0	0	0	0	0	0
1/27			PH2	0	0	0	0	0	0
1/27			SW1	0	0	0	0	0	0
1/27			SW2	0	0	0	0	0	0
1/27			SW3	0	0	0	55	0	0
1/27			SW4	0	0	0	0	0	0
1/28	JED	PM	FB	0	3	0	0	0	0
1/28			PH1	0	0	0	0	0	0
1/28			PH2	0	0	0	0	0	0
1/28			SW1	0	0	0	0	0	0
1/28			SW2	0	0	0	0	0	0
1/28			SW3	0	0	0	25	0	0
1/28			SW4	0	0	0	0	0	0
1/29	JED	AM	FB	0	0	0	0	0	0
1/29			PH1	0	0	0	0	0	0
1/29			PH2	0	0	0	0	0	0
1/29			SW1	0	0	0	0	0	0
1/29			SW2	0	0	0	0	0	0
1/29			SW3	1	0	0	30	0	0
1/29			SW4	0	80	0	0	0	0







Row Labels	Sum of GULL F	Sum of GULL NF	Sum of DCCO F	Sum of DCCO NF
<b>1/26</b>	<b>0</b>	<b>1</b>	<b>0</b>	<b>53</b>
FB	0	1	0	0
PH1	0	0	0	0
PH2	0	0	0	0
SW1	0	0	0	0
SW2	0	0	0	0
SW3	0	0	0	53
SW4	0	0	0	0
<b>1/27</b>	<b>0</b>	<b>1</b>	<b>0</b>	<b>55</b>
FB	0	1	0	0
PH1	0	0	0	0
PH2	0	0	0	0
SW1	0	0	0	0
SW2	0	0	0	0
SW3	0	0	0	55
SW4	0	0	0	0
<b>1/28</b>	<b>0</b>	<b>3</b>	<b>0</b>	<b>25</b>
FB	0	3	0	0
PH1	0	0	0	0
PH2	0	0	0	0
SW1	0	0	0	0
SW2	0	0	0	0
SW3	0	0	0	25
SW4	0	0	0	0
<b>1/29</b>	<b>1</b>	<b>80</b>	<b>0</b>	<b>30</b>
FB	0	0	0	0
PH1	0	0	0	0
PH2	0	0	0	0



SW1	0	0	0	0
SW2	0	0	0	0
SW3	1	0	0	30
SW4	0	80	0	0
<b>Grand Total</b>	<b>1</b>	<b>85</b>	<b>0</b>	<b>163</b>



New General Oceanic mechanical flow meter sampling site at the east end of the collection channel 1/28/2022.

Secchi:		USGS°F
	Sun	38.2
	Mon	38.2
	Tue	38.3
	Wed	38.4
	Thurs	38.3
	Fri	38.2
	Sat	38.3
#DIV/0!	median	38.3

The Dalles Dam Daily Readings and Averages for  
Temperatures, Secchi, Entrances, and Spill

out of criteria

Date:	North Ladder		East Ladder												
	Differential	N1 Depth	East Entrance					West Entrance			South Entrance				
			Differential	E1 Depth	E2 Depth	E3 Depth	JP 6	Differential	W1	W2	W3	Differential	S1	S2	
1/23	Dewatered		1.4	9.5	8.8	9.9	12.0	1.0	6.9	9.6	9.0	1.5	9.6	9.6	
1/24			1.5	9.0	8.2	9.5	12.4	0.9	7.4		9.7	1.4	9.9	10.0	
1/25			1.4	9.6	8.7	10.1	12.9	1.0		9.5	9.0	1.3	10.3	10.3	
1/26			1.1	9.5	8.6	10.0	14.1	1.0	10.6	11.0	-1.0	1.3	11.1	11.2	
1/27			1.3	9.7	8.9	10.4	14.2	1.5	12.5	12.5	0.5	1.3	10.2	10.3	
1/28			1.3	4.7	10.2	12.4	14.0	1.2	11.2	11.6	0.9	1.4	10.1	10.1	
			1.5	3.5	11.5	11.5	13.5	1.3	10.8	11.2	0.6	1.5	9.6	9.6	
1/29			1.6	2.7	12.1	12.1	12.7	1.3	10.5	10.8	0.2	1.6	9.2	9.2	
<b>AVG:</b>		#DIV/0!	#DIV/0!	1.4	7.3	9.6	10.7	13.2	1.2	10.0	10.9	3.6	1.4	10.2	10.2

Fishways are inspected once daily.