

The Dalles Dam Fishway Status Report

1/16/22

Inspection Period: 1/9 - 1/15/2022

THE DALLES DAM



The Dalles Project-Fisheries
P.O. Box 564
The Dalles, OR 97058-9998
Phone: 541-506-3800

The Dalles Dam	Inspections OOC	Criteria Limit	Total Number of Inspections: 5		Temperature: 37.2 °F
			Comments: EFL RTS, North ladder OOS		Weekly Ave. Secchi: 5.0

NORTH FISHWAY OOS 1/11/2022

Exit differential	1	≤ 0.5'	High differential due to weed buildup.		
Count station differential	0	≤ 0.3'			
Weir crest depth	0	1.0' ± 0.1'			
Entrance weir N1	0	depth (≥ 8')	Weekly average	10.2	
Entrance Differential	0		1.0' - 2.0'	Weekly average	1.3
Entrance weir N2	0	Closed			
PUD Intake differential	0	≤ 0.5'	Significant aquatic weeds accumulating. Rake turned over to PUD operations.		

EAST FISHWAY - Returned to service 1/10/2022

Exit differential	0	≤ 0.5'			
Removable weirs 154-157	0	Per forebay			
Weir 158-159 differential	0	1.1' ± 0.1'			
Count station differential	0	≤ 0.3'			
153 Weir crest depth	0	1.0' ± 0.1'			
Junction pool weir JP6	0	> 7.0'	Weekly average	12.3	
East entrance differential	4	1.0' - 2.0'	Weekly average	0.4	
Entrance weir E1	0	No criteria	Weekly average	9.8	
Entrance weir E2	0	depth (≥ 8')	Weekly average	8.2	
Entrance weir E3	0	depth (≥ 8')	Weekly average	11.8	
Collection channel velocity		1.5 - 4 fps			
Transportation channel velocity		1.5 - 4 fps			
North channel velocity		1.5 - 4 fps			
South channel velocity		1.5 - 4 fps			
West entrance differential		1.0' - 2.0'	Weekly average	Closed	
Entrance weir W1		depth (≥ 8')	Weekly average		
Entrance weir W2		depth (≥ 8')	Weekly average		
Entrance weir W3		No criteria			
South entrance differential	4	1.0' - 2.0'	Weekly average	0.8	
Entrance weir S1	0	depth (≥ 8')	Weekly average	10.0	
Entrance weir S2	0	depth (≥ 8')	Weekly average	10.0	

JUVENILE BYPASS

Sluiceway operation	0	Units 1,8, 18	Gates over MU1 ,MU18-3 open. Endgate closed Dec16		
Turbine trashrack drawdown	0	<1.5', biwklly	10/20/21, all gatewells in criteria.		
Spill volume/pattern	0	1 to 8	Spill closed 9/1/21		
Turbine Unit Priority	0	per FPP	MU 1 OOS due to Overhaul RTS 2/3/2022.		
Gatewells	0	Weekly	No mortality or debris in wells 12/31/2021.		

OTHER ISSUES:

Current Unit Outages

- T10 (MU19 & 20) FOOS through 10/27/2022 due to acetylene levels
 - MU12 OOS 0001 4/12/2021 – 1700 10/27/2022 for Annual & Cooler Upgrades
 - MU19 OOS 0630 6/27/2021 – 1700 10/27/2022 for Top Plate Cover Upgrade
- Navlock outage Feb 13-Mar19
F1 and F2 OOS 12/01/2021 RTS 1/15/2021

Maintenance

- Replaced drive motor on west entrance weirs
Permanent oil boom removed from east exit for repairs. Attachment bracket redesign in engineering.
Fishway automation replacement work in progress.
East fishway return Jan10. North fishway dewater Jan11
Spillway assessment (MRER); Spillgates 1- 9 rehab date estimate 2034. Includes replacement of spillbay 9 trunnion pin repair
Calibrations on north entrances in criteria.

Predators

Resident cormorants and migrant bald eagles on site now.

Research/Construction/Contractors

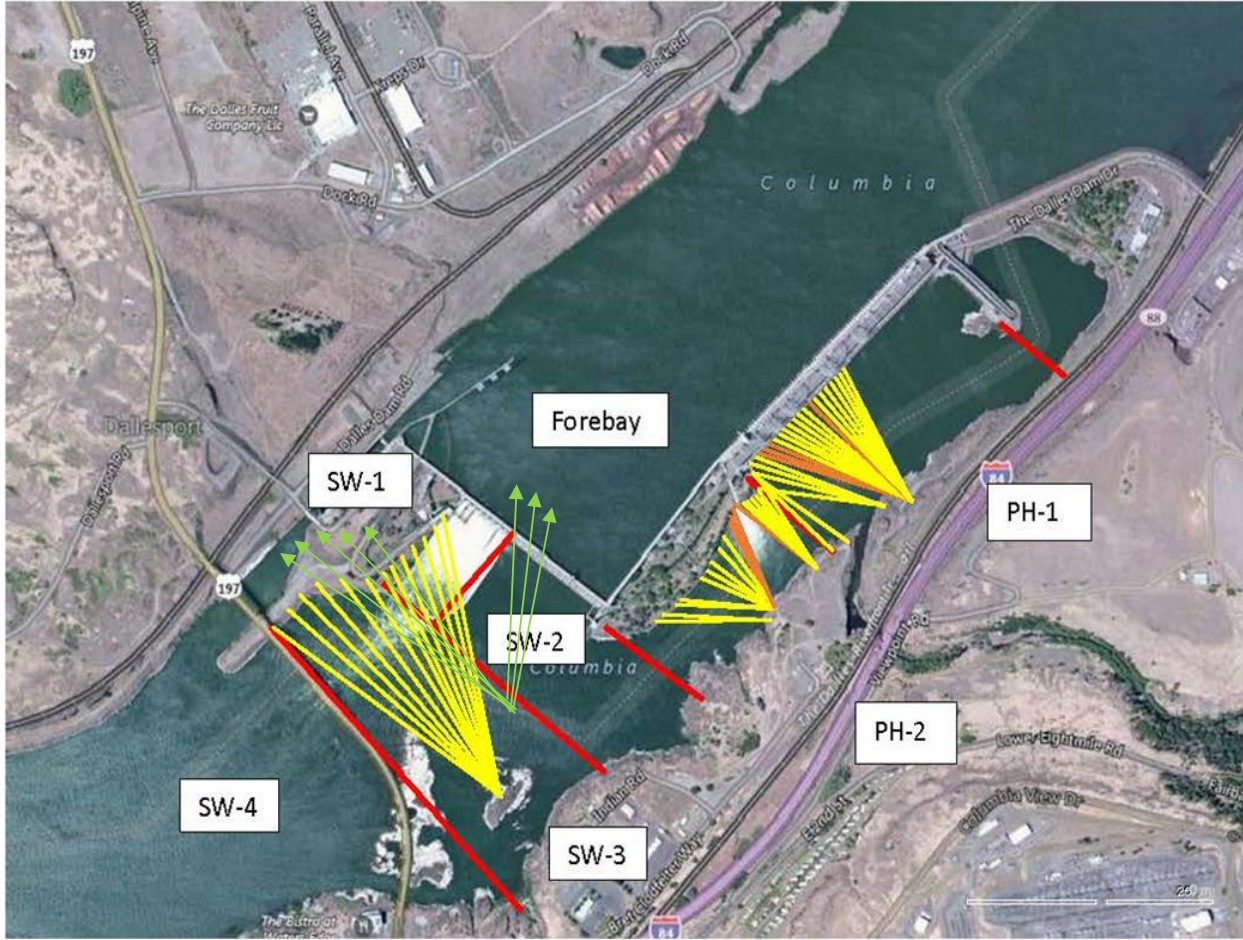
- [TD-USGS °F](#)
AWS intake trashrack debris issue - No funding FY22.
Fish Accords Lamprey Passage plan ongoing at 30% DDR junction pool LPS. Also working on potential entrance weir guide plating design.
PITAGS fishladder data collection at in service count station continues.
Fish unit rehab - Phase 1A on hold. Date to be determined. Planning operation with AWS backup water supply during construction.
Northern Pikeminnow Management Program season concluded w/1384 native pikeminnow removed YTD. We continue to request bass/walleye removal.
PUD excavating for concrete work for new juvenile sampling facility.

Fishway Operations

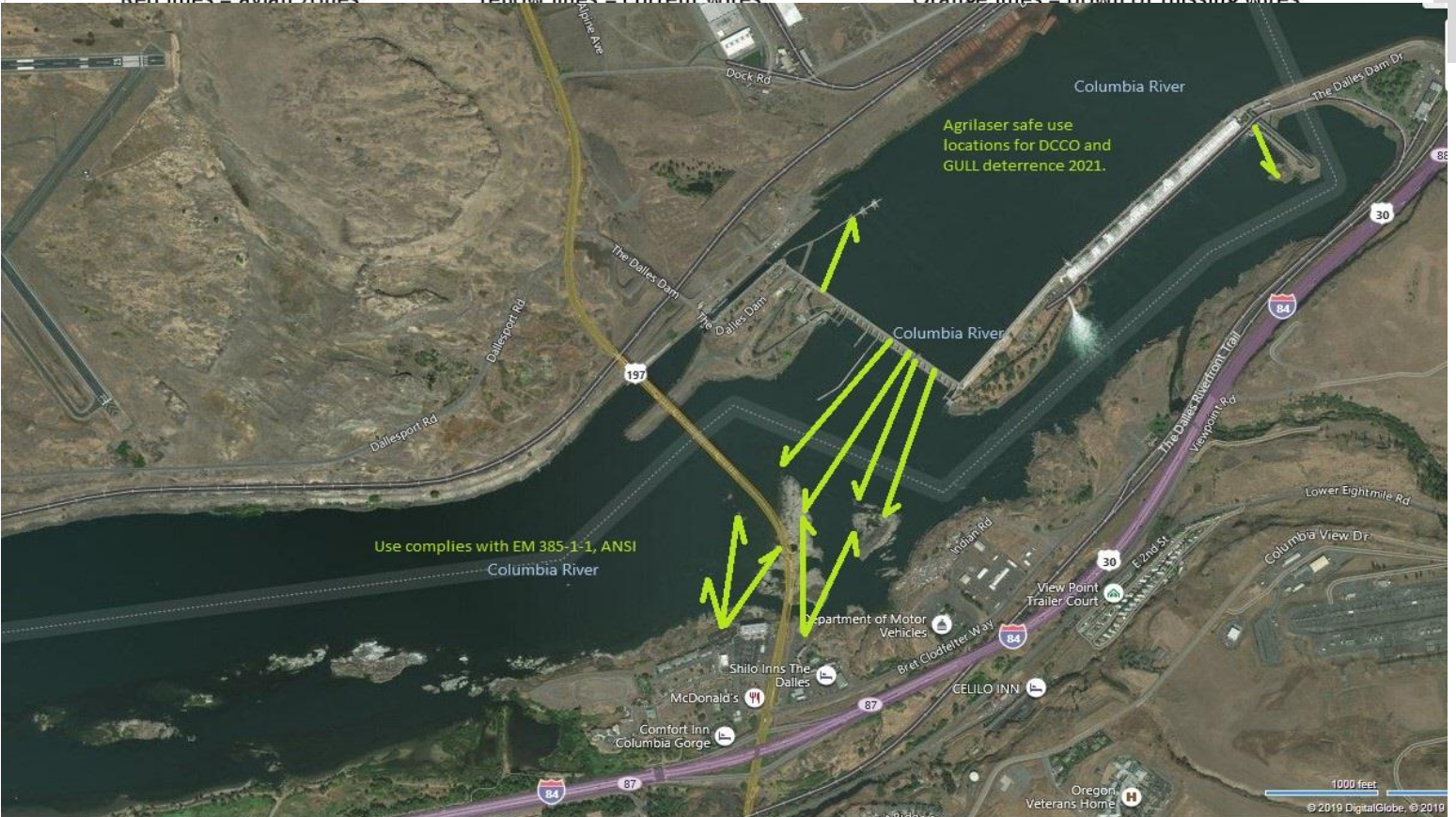
- East fishladder RTS
Ice Trash sluiceway endgate closed. MU1 and 18-3 intakes opened for fish egress.
North fishladder OOS

Approved by: Ron Twiner, Operation Project Manager, The Dalles Dam

New Avian Lines and laser deterrent zones



Red lines = avian zones Yellow lines = current wires Orange lines = down or missing wires





New automation In Service at South Entrance

Secchi:		USGS°F
5.0	Sun	37.2
5.0	Mon	37.0
5.0	Tue	37.1
5.0	Wed	37.2
5.0	Thurs	37.3
5.0	Fri	37.5
5.0	Sat	37.6
5.0	median	37.2

The Dalles Dam Daily Readings and Averages for
Temperatures, Secchi, Entrances, and Spill

out of criteria

Date:	North Ladder		East Ladder											
	Differential	N1 Depth	East Entrance					West Entrance			South Entrance			
			Differential	E1 Depth	E2 Depth	E3 Depth	JP 6	Differential	W1	W2	W3	Differential	S1	S2
1/9	1.3	10.2	East Ladder OOS											
1/10														
1/11														
1/12			-0.5	7.1	13.8	-9.0	11.3	NO Fish Unit flow, West gates closed				0.4	6.0	9.9
1/13			0.4	9.5	8.0	11.6	12.0					0.8	10.0	10.0
1/14			0.4	10.1	8.5	12.2	12.7					0.9	9.9	9.9
1/15			0.4	9.7	8.2	11.7	12.2					0.8	10.1	10.2
AVG:	1.3	10.2	0.4	9.8	8.2	11.8	12.3	#DIV/0!	#DIV/0!	#DIV/0!	#DIV/0!	0.8	10.0	10.0

Fishways are inspected once daily.