

The Dalles Dam Fishway Status Report

Inspection Period: 1/2 - 1/8/2022

THE DALLES DAM



US Army Corps
of Engineers
Portland District

The Dalles Project-Fisheries
P.O. Box 564
The Dalles, OR 97058-9998
Phone: 541-506-3800

The Dalles Dam	Inspections OOC	Criteria Limit	Total Number of Inspections: 7		Temperature: 38.6 °F	
			Comments: EFL dewatered, North ladder in use.		Weekly Ave. Secchi: 5.0	

NORTH FISHWAY

Exit differential	1	≤ 0.5'	High differential due to weed buildup.			
Count station differential	0	≤ 0.3'				
Weir crest depth	0	1.0' ± 0.1'				
Entrance weir N1	0	depth (≥ 8')	Weekly average	10.0		
Entrance Differential	0		1.0' - 2.0'	Weekly average	1.3	
Entrance weir N2	0	Closed				
PUD Intake differential	0	≤ 0.5'	Significant aquatic weeds accumulating. Rake turned over to PUD operations.			

EAST FISHWAY - out of service

Exit differential		≤ 0.5'				
Removable weirs 154-157		Per forebay				
Weir 158-159 differential		1.1' ± 0.1'				
Count station differential		≤ 0.3'				
153 Weir crest depth		1.0' ± 0.1'				
Junction pool weir JP6		> 7.0'	Average for week =			
East entrance differential		1.0' - 2.0'				
Entrance weir E1		No criteria				
Entrance weir E2		depth (≥ 8')				
Entrance weir E3		depth (≥ 8')				
Collection channel velocity		1.5 - 4 fps	Dewatered			
Transportation channel velocity		1.5 - 4 fps	Dewatered			
North channel velocity		1.5 - 4 fps	2.6 fps 12/7/21			
South channel velocity		1.5 - 4 fps	Dewatered			
West entrance differential		1.0' - 2.0'	Week ave. 0.0			
Entrance weir W1		depth (≥ 8')	Week ave. 0.0			
Entrance weir W2		depth (≥ 8')	Week ave. 0.0			
Entrance weir W3		No criteria	Closed			
South entrance differential		1.0' - 2.0'	Week ave. 0.0			
Entrance weir S1		depth (≥ 8')	Week ave. 0.0			
Entrance weir S2		depth (≥ 8')	Week ave. 0.0			

JUVENILE BYPASS

Sluiceway operation	0	Units 1,8, 18	Gates over MU1 ,MU18-3 open. Endgate closed Dec16			
Turbine trashrack drawdown	0	<1.5', biwkly	10/20/21, all gatewells in criteria.			
Spill volume/pattern	0	1 to 8	Spill closed 9/1/21			
Turbine Unit Priority	0	per FPP	MU 1 OOS due to Overhaul RTS 2/3/2022.			
Gatewells	0	Weekly	No mortality or debris in wells 12/31/2021.			

OTHER ISSUES:

Current Unit Outages

- T10 (MU19 & 20) FOOS through 10/27/2022 due to acetylene levels
 - MU12 OOS 0001 4/12/2021 – 1700 10/27/2022 for Annual & Cooler Upgrades
 - MU19 OOS 0630 6/27/2021 – 1700 10/27/2022 for Top Plate Cover Upgrade
- Navlock outage Feb 13-Mar19
F1 and F2 OOS 12/01/2021 RTS 1/15/2021

Maintenance

Permanent oil boom removed from east exit for repairs. Attachment bracket redesign in engineering.
Fishway automation replacement work in progress.
East fishway return Jan10. North fishway dewater Jan11
Spillway assessment (MRER); Spillgates 1- 9 rehab date estimate 2034. Includes replacement of spillbay 9 trunnion pin repair
Calibrations on north entrances in criteria.
PUD now raking north auxiliary water intake. Working on logistics of raking and debris handling.

Predators

River otters roaming the fishways. Tracks in snow.
Resident gull, cormorants and migrant bald eagles on site now.

Research/Construction/Contractors

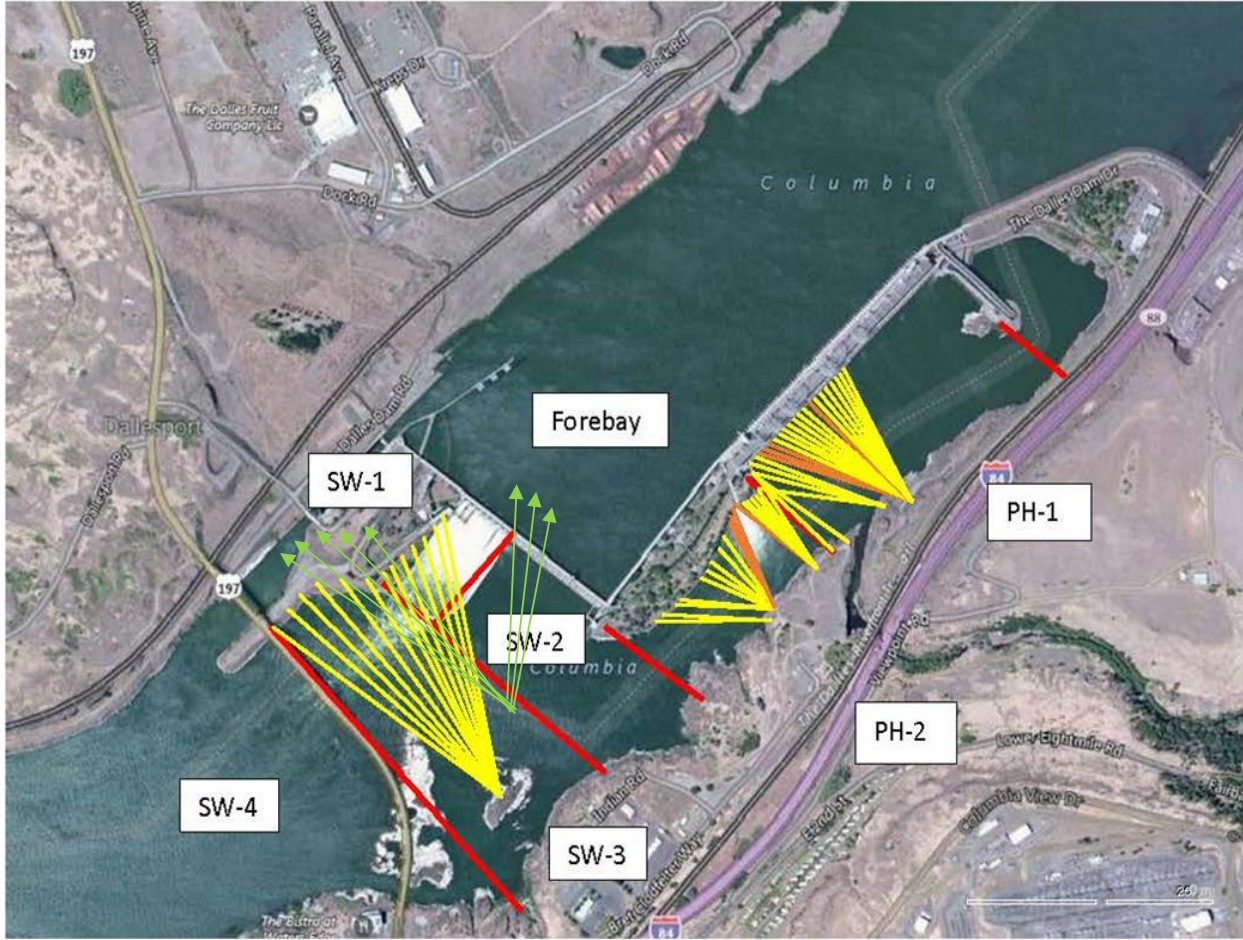
[TD-USGS °F](#)
AWS intake trashrack debris issue - No funding FY22.
Fish Accords Lamprey Passage plan ongoing at 30% DDR junction pool LPS. Also working on potential entrance weir guide plating design.
PITAGS north fishladder data collection at count station continues.
Fish unit rehab - Phase 1A on hold. Date to be determined. Planning operation with AWS backup water supply during construction.
Northern Pikeminnow Management Program season concluded w/1384 native pikeminnow removed YTD. We continue to request bass/walleye removal.
PUD excavating for concrete work for new juvenile sampling facility.

Fishway Operations

Ice Trash sluiceway endgate closed. MU1 and 18-3 intakes opened for fish egress.
North fishladder in full operation

Approved by: Ron Twiner, Operation Project Manager, The Dalles Dam

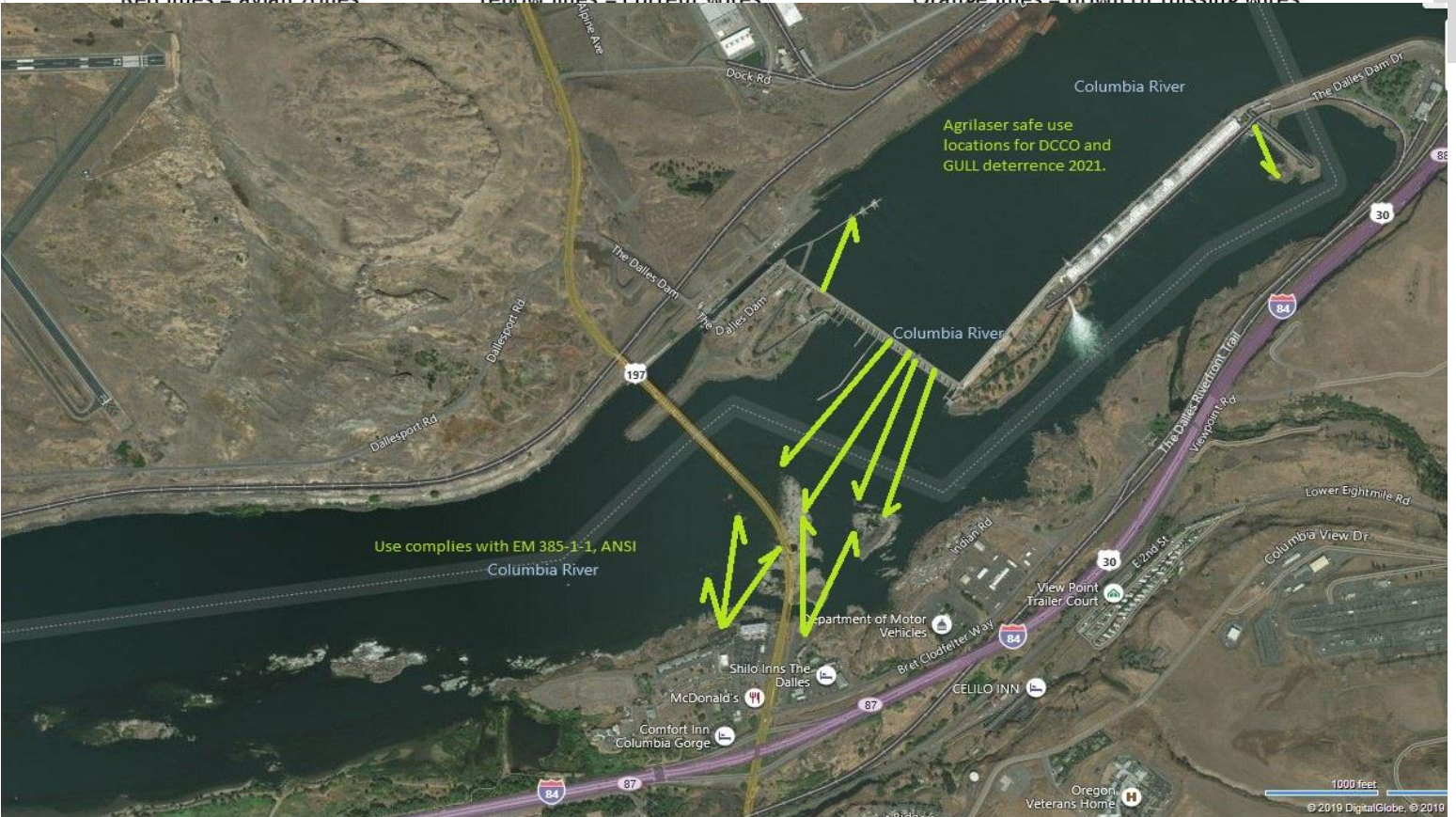
New Avian Lines and laser deterrent zones



Red lines = avian zones

Yellow lines = current wires

Orange lines = down or missing wires



Use complies with EM 385-1-1, ANSI

Agrilaser safe use locations for DCCO and GULL deterrence 2021.



Eagles at Westrick

Secchi:		USGS°F
5.0	Sun	40.1
5.0	Mon	39.4
5.0	Tue	39.0
5.0	Wed	38.6
5.0	Thurs	37.8
5.0	Fri	37.5
5.0	Sat	37.4
5.0	median	38.6

The Dalles Dam Daily Readings and Averages for
Temperatures, Secchi, Entrances, and Spill

out of criteria

Date:	North Ladder		East Ladder										
	Differential	N1 Depth	East Entrance					West Entrance			South Entrance		
			Differential	E1 Depth	E2 Depth	E3 Depth	JP 6	Differential	W1	W2	W3	Differential	S1
1/2	1.3	9.8	Fish Turbines off at 00:00 12/1 EL dewatered 12/2										
1/3													
1/4	1.4	9.9											
1/5	1.3	9.9											
1/6	1.2	10.3											
1/7	1.3	10.1											
1/8	1.4	10.1											
AVG:	1.3	10.0											

Fishways are inspected once daily.