

The Dalles Dam Fishway Status Report

Inspection Period: 12/26 - 1/1/2022

THE DALLES DAM



US Army Corps
of Engineers
Portland District

The Dalles Project-Fisheries
P.O. Box 564
The Dalles, OR 97058-9998
Phone: 541-506-3800

The Dalles Dam	Inspections OOC	Criteria Limit	Total Number of Inspections: 7		Temperature: 42.6 °F	
			Comments: EFL dewatered, North ladder in use.		Weekly Ave. Secchi: 4.1	

NORTH FISHWAY

Exit differential	1	≤ 0.5'	High differential due to weed buildup.			
Count station differential	0	≤ 0.3'				
Weir crest depth	0	1.0' ± 0.1'				
Entrance weir N1	0	depth (≥ 8')	Weekly average	9.9		
Entrance Differential	0		1.0' - 2.0'	Weekly average	1.3	
Entrance weir N2	0	Closed				
PUD Intake differential	0	≤ 0.5'	Significant aquatic weeds accumulating. Rake turned over to PUD operations.			

EAST FISHWAY - out of service

Exit differential		≤ 0.5'				
Removable weirs 154-157		Per forebay				
Weir 158-159 differential		1.1' ± 0.1'				
Count station differential		≤ 0.3'				
153 Weir crest depth		1.0' ± 0.1'				
Junction pool weir JP6		> 7.0'	Average for week =			
East entrance differential		1.0' - 2.0'				
Entrance weir E1		No criteria				
Entrance weir E2		depth (≥ 8')				
Entrance weir E3		depth (≥ 8')				
Collection channel velocity		1.5 - 4 fps	Dewatered			
Transportation channel velocity		1.5 - 4 fps	Dewatered			
North channel velocity		1.5 - 4 fps	2.6 fps 12/7/21			
South channel velocity		1.5 - 4 fps	Dewatered			
West entrance differential		1.0' - 2.0'	Week ave. 0.0			
Entrance weir W1		depth (≥ 8')	Week ave. 0.0			
Entrance weir W2		depth (≥ 8')	Week ave. 0.0			
Entrance weir W3		No criteria	Closed			
South entrance differential		1.0' - 2.0'	Week ave. 0.0			
Entrance weir S1		depth (≥ 8')	Week ave. 0.0			
Entrance weir S2		depth (≥ 8')	Week ave. 0.0			

JUVENILE BYPASS

Sluiceway operation	0	Units 1,8, 18	Gates over MU1 ,MU18-3 open. Endgate closed Dec16			
Turbine trashrack drawdown	0	<1.5', biwklly	10/20/21, all gatewells in criteria.			
Spill volume/pattern	0	1 to 8	Spill closed 9/1/21			
Turbine Unit Priority	0	per FPP	MU 1 OOS due to Overhaul RTS 2/3/2022.			
Gatewells	0	Weekly	No mortality or debris in wells 12/31/2021.			

OTHER ISSUES:

Current Unit Outages

- T10 (MU19 & 20) FOOS through 10/27/2022 due to acetylene levels
 - MU12 OOS 0001 4/12/2021 – 1700 10/27/2022 for Annual & Cooler Upgrades
 - MU19 OOS 0630 6/27/2021 – 1700 10/27/2022 for Top Plate Cover Upgrade
- Navlock outage Feb 13-Mar19
F1 and F2 OOS 12/01/2021 RTS 1/15/2021

Maintenance

- Permanent oil boom removed from east exit for repairs. Attachment bracket redesign in engineering. Install by March1.
- Fishway automation replacement work in progress. Installing weir level sensors.
- Grating damage at east entrance repaired. Sections tack welded together to prevent panels from moving.
- Spillway assessment (MRER); Spillgates 1- 9 rehab date estimate 2034. Includes replacement of spillbay 9 trunnion pin repair
- Calibrations on north entrances in criteria.
- Debris trailer blocking access to north exit raking.

Predators

- River otter tracks visible in snow at north ladder
- Resident GULL, DCCO and migrant BAEA on site now.

Research/Construction/Contractors

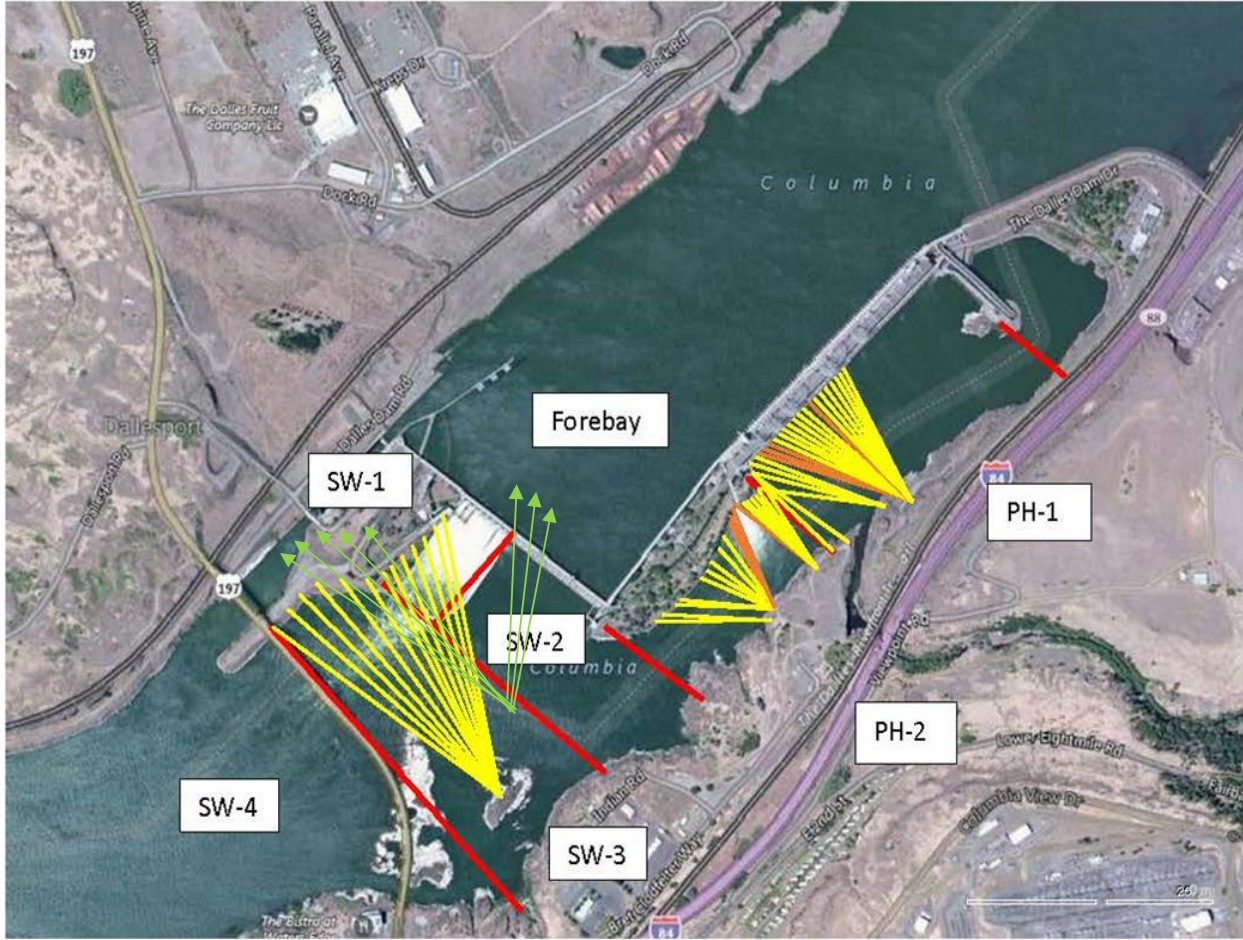
- [TD-USGS °F](#)
- AWS intake trashrack debris issue - No funding FY22.
- Fish Accords Lamprey Passage plan ongoing at 30% DDR junction pool LPS. Also working on potential entrance weir guide plating design.
- PITAGS north fishladder data collection at count station continues.
- Fish unit rehab - Phase 1A on hold. Date to be determined. Planning operation with AWS backup water supply during construction.
- Northern Pikeminnow Management Program season concluded w/1384 native pikeminnow removed YTD. We continue to request bass/walleye removal.
- PUD excavating for concrete work for new juvenile sampling facility.

Fishway Operations

- Ice Trash sluiceway endgate closed. MU1 and 18-3 intakes opened for fish egress.
- North fishladder in full operation

Approved by: Ron Twiner, Operation Project Manager, The Dalles Dam

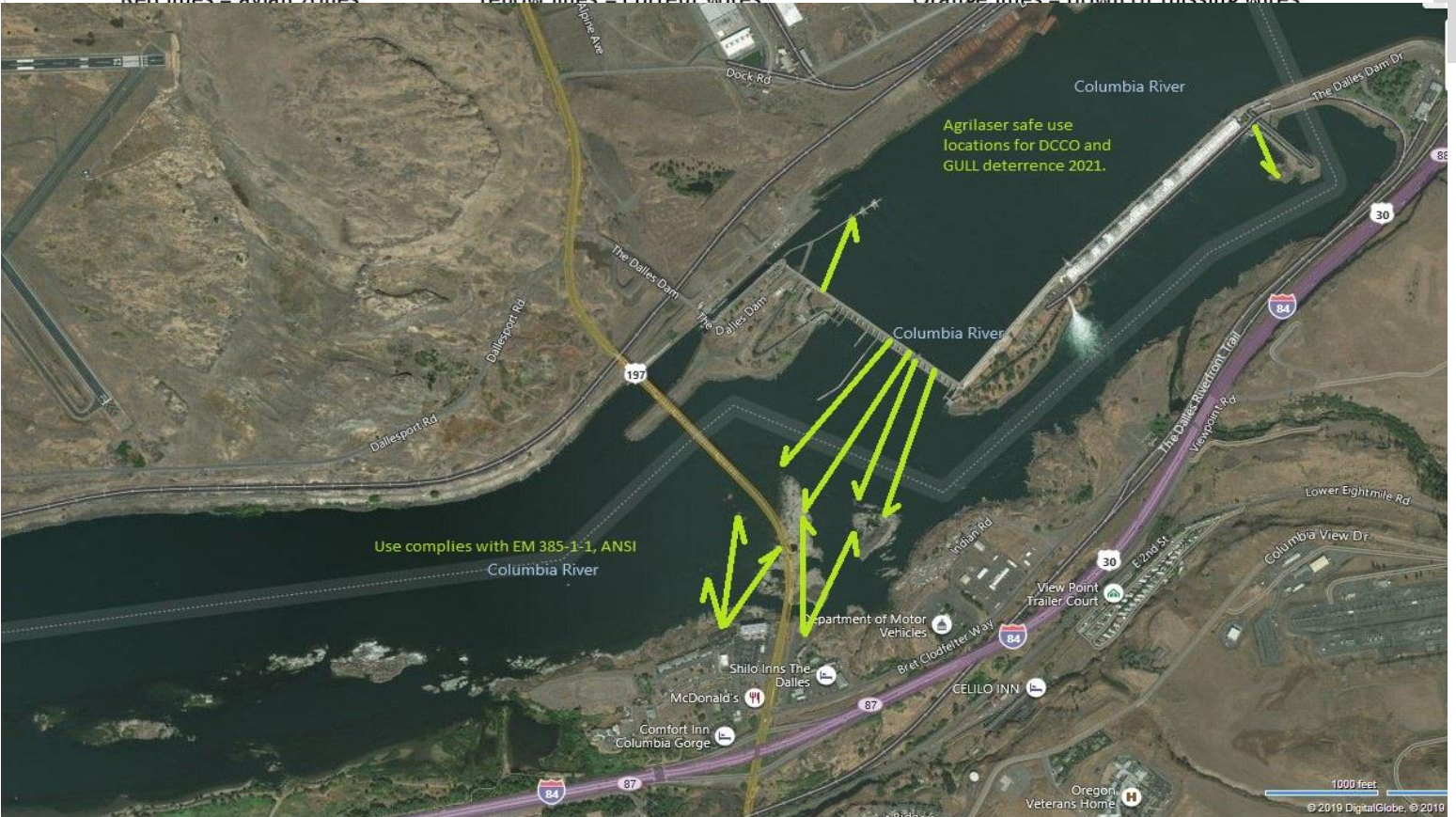
New Avian Lines and laser deterrent zones



Red lines = avian zones

Yellow lines = current wires

Orange lines = down or missing wires



Use complies with EM 385-1-1, ANSI

Agrilaser safe use locations for DCCO and GULL deterrence 2021.



Eagles at Westrick 1/1/2022



Powerhouse snow with interesting critter tracks

	Secchi:		USGS°F
12/26	3.5	Sun	43.6
12/27	3.5	Mon	43.1
12/28	4.0	Tue	42.8
12/29	4.0	Wed	42.3
12/30	4.0	Thurs	41.8
12/31	5.0	Fri	40.8
1/1	5.0	Sat	null
	4.1	median	42.6

[Lower Columbia River Temperature Report for December 2021 \(crohms.org\)](https://crohms.org)

The Dalles Dam Daily Readings and Averages for
Temperatures, Secchi, Entrances, and Spill

out of criteria

Date:	North Ladder		East Ladder										
	Differential	N1 Depth	East Entrance					West Entrance			South Entrance		
			Differential	E1 Depth	E2 Depth	E3 Depth	JP 6	Differential	W1	W2	W3	Differential	S1
12/26	1.4	9.7	Fish Turbines off at 00:00 12/1 EL dewatered 12/2										
12/27	1.3	9.9											
12/28	1.3	9.9											
12/29	1.3	9.9											
12/30	1.3	10.0											
12/31	1.3	9.9											
1/1	1.3	9.8											
AVG:	1.3	9.9											

Fishways are inspected once daily.