

# The Dalles Dam Fishway Status Report

Inspection Period: 12/12 - 12/18, 2021

## THE DALLES DAM



The Dalles Project-Fisheries  
 P.O. Box 564  
 The Dalles, OR 97058-9998  
 Phone: 541-506-3800

<b>The Dalles Dam</b>	<b>Inspections OOC</b>	<b>Criteria Limit</b>	<b>Total Number of Inspections:</b>		<b>Temperature:</b> 44.5 °F
			<b>Comments:</b> refished EFL below TW 12/14		<b>Weekly Ave. Secchi:</b> 3.7

### NORTH FISHWAY

Exit differential	0	≤ 0.5'		
Count station differential	0	≤ 0.3'		
Weir crest depth	0	1.0' ± 0.1'		
Entrance weir N1	0	depth (≥ 8')	Weekly average	8.1
Entrance Differential	0	1.0' - 2.0'	Weekly average	1.1
Entrance weir N2	0	Closed		
PUD Intake differential	0	≤ 0.5'	Significant aquatic weeds accumulating. Rake turned over to PUD operations.	

### EAST FISHWAY - out of service

Exit differential		≤ 0.5'		
Removable weirs 154-157		Per forebay		
Weir 158-159 differential		1.1' ± 0.1'		
Count station differential		≤ 0.3'		
153 Weir crest depth		1.0' ± 0.1'		
Junction pool weir JP6		> 7.0'	Average for week =	
East entrance differential		1.0' - 2.0'		
Entrance weir E1		No criteria		
Entrance weir E2		depth (≥ 8')		
Entrance weir E3		depth (≥ 8')		
Collection channel velocity		1.5 - 4 fps	Dewatered	
Transportation channel velocity		1.5 - 4 fps	Dewatered	
North channel velocity		1.5 - 4 fps	2.6 fps 12/7/21	
South channel velocity		1.5 - 4 fps	Dewatered	
West entrance differential		1.0' - 2.0'		Week ave. 0.0
Entrance weir W1		depth (≥ 8')		Week ave. 0.0
Entrance weir W2		depth (≥ 8')		Week ave. 0.0
Entrance weir W3		No criteria	Closed	
South entrance differential		1.0' - 2.0'		Week ave. 0.0
Entrance weir S1		depth (≥ 8')		Week ave. 0.0
Entrance weir S2		depth (≥ 8')		Week ave. 0.0

### JUVENILE BYPASS

Sluicgate operation	0	Units 1,8, 18	Gates over MU1/1-2, moved to MU4, MU8/1-3, MU18-2 open. Endgate closed Dec16	
Turbine trashrack drawdown	0	<1.5', biwkly	10/20/21, all gatewells in criteria.	
Spill volume/pattern	0	1 to 8	Spill closed 9/1/21	
Turbine Unit Priority	0	per FPP	Mus 1-3 OOS due to crane rail replacement work.	
Gatewells	0	Weekly	No mortality 11/17/2021.	

## OTHER ISSUES:

### **Current Unit Outages**

- T10 (MU19 & 20) FOOS through 10/27/2022 due to acetylene levels
  - MU12 OOS 0001 4/12/2021 – 1700 10/27/2022 for Annual & Cooler Upgrades
  - MU19 OOS 0630 6/27/2021 – 1700 10/27/2022 for Top Plate Cover Upgrade
- Navlock outage Feb 13-Mar19  
F1 and F2 OOS 12/01/2021 RTS 1/15/2021

### **Maintenance**

Permanent oil boom removed from east exit for repairs. Attachment bracket redesign in engineering. Install by March1.  
Fishway automation replacement work in progress. Installing weir level sensors.  
Grating damage at east entrance repaired. Sections tack welded together to prevent panels from moving.  
Spillway assessment (MRER); Spillgates 1- 9 rehab date estimate 2034. Includes replacement of spillbay 9 trunnion pin repair

### **Predators**

6 walleye found in south channel and west entrance during dewatering.

### **Research/Construction/Contractors**

[TD-USGS °F](#)  
AWS intake trashrack debris issue - No funding FY22.  
Fish Accords Lamprey Passage plan ongoing at 30% DDR junction pool LPS. Also working on potential entrance weir guide plating design.  
PITAGS north fishladder data collection at count station continues.  
Fish unit rehab - Phase 1A on hold. Date to be determined. Planning operation with AWS backup water supply during construction.  
Northern Pikeminnow Management Program season concluded w/1384 native pikeminnow removed YTD. Project continues to request bass/walleye removal.  
PUD excavating for concrete work for new juvenile sampling facility.  
Crane rail replacement underway on intake deck units 1-4. Issue with clearance of new concrete being addressed.

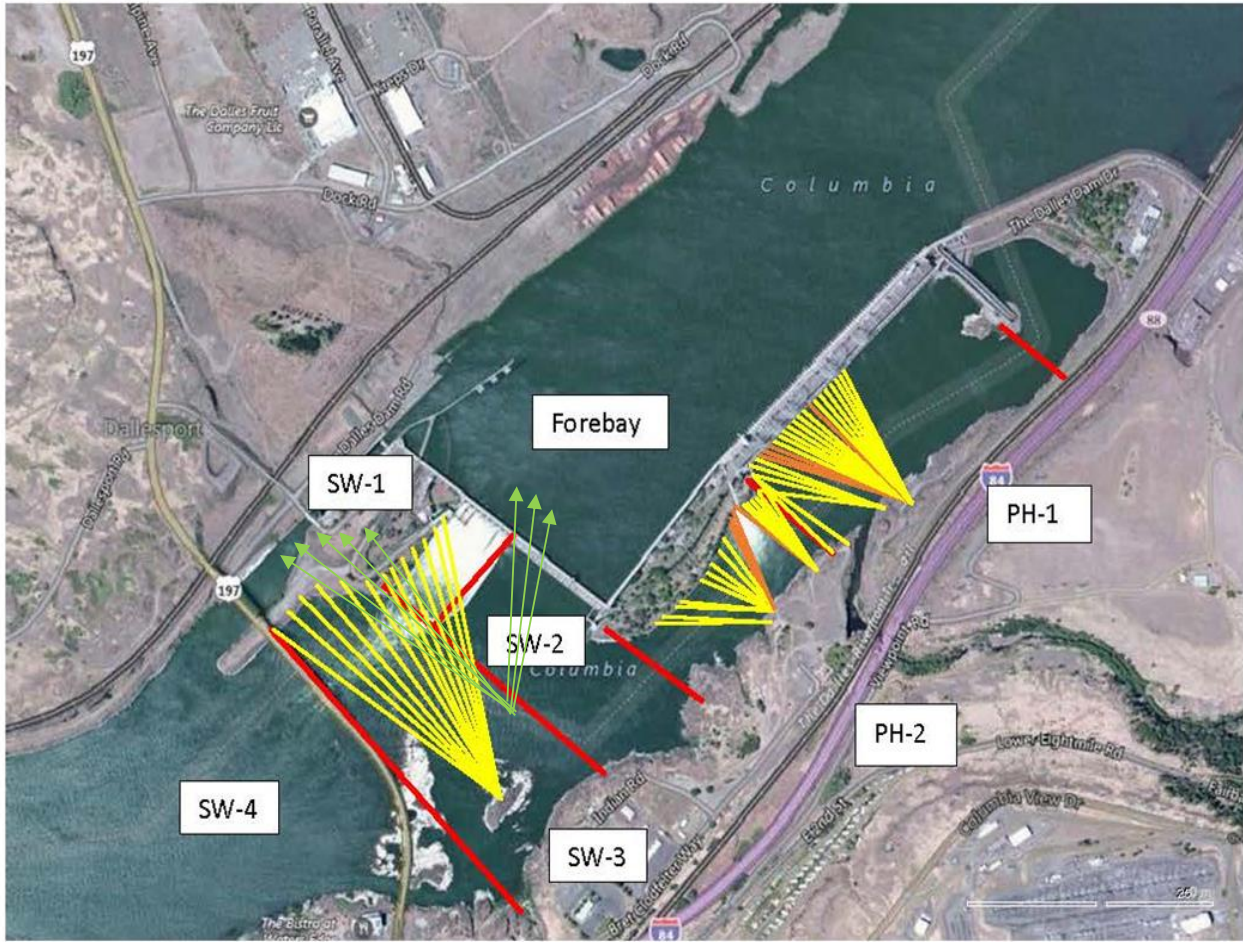
### **Fishway Operations**

Ice Trash sluiceway opened 24/7. MU4/1-2 and MU18/1-2 opened through Dec15. Endgate closed Dec16.  
North fishladder in full operation

Approved by: Ron Twiner, Operation Project Manager, The Dalles Dam



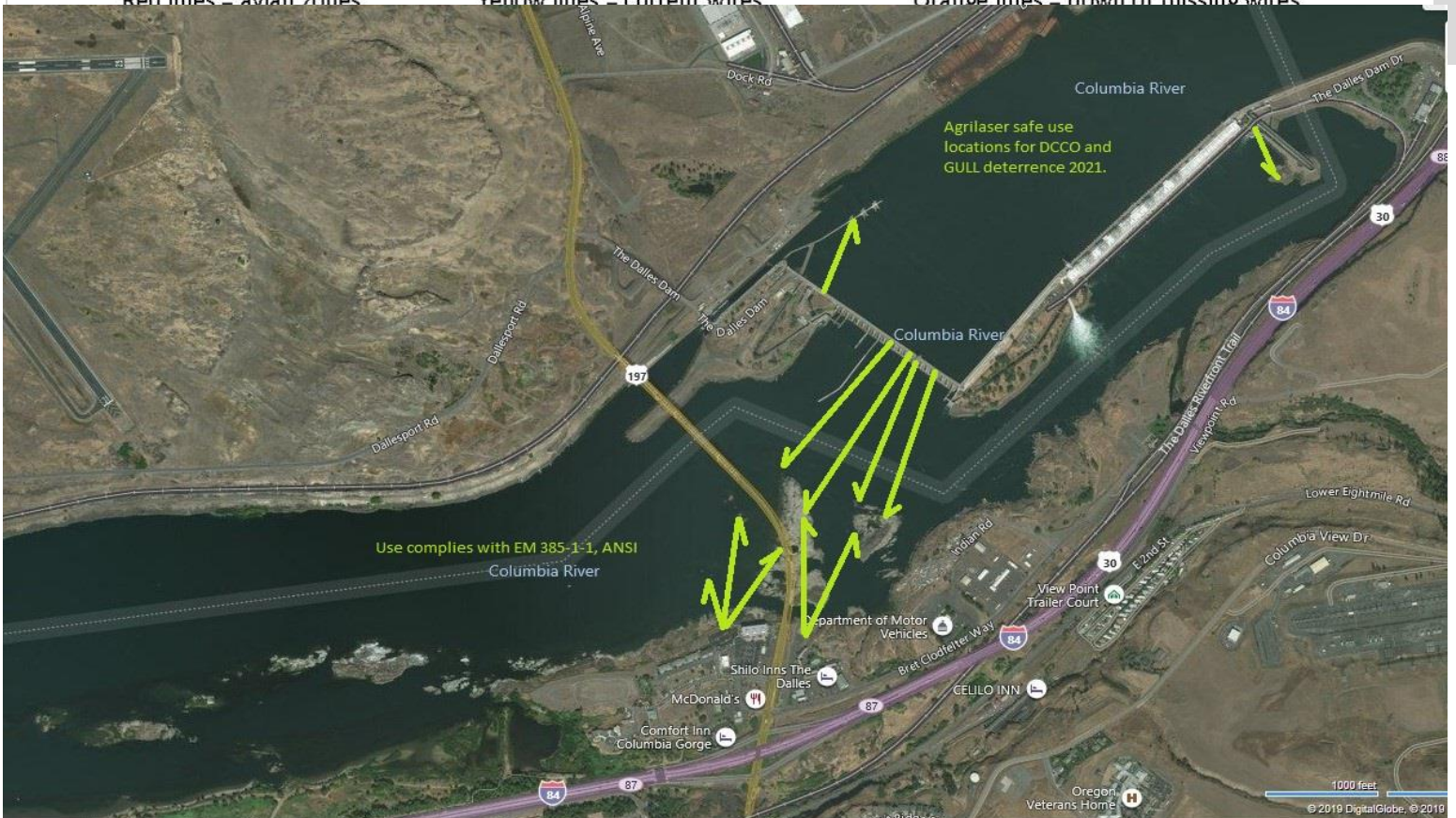
New Avian Lines and laser deterrent zones



Red lines = avian zones

Yellow lines = current wires

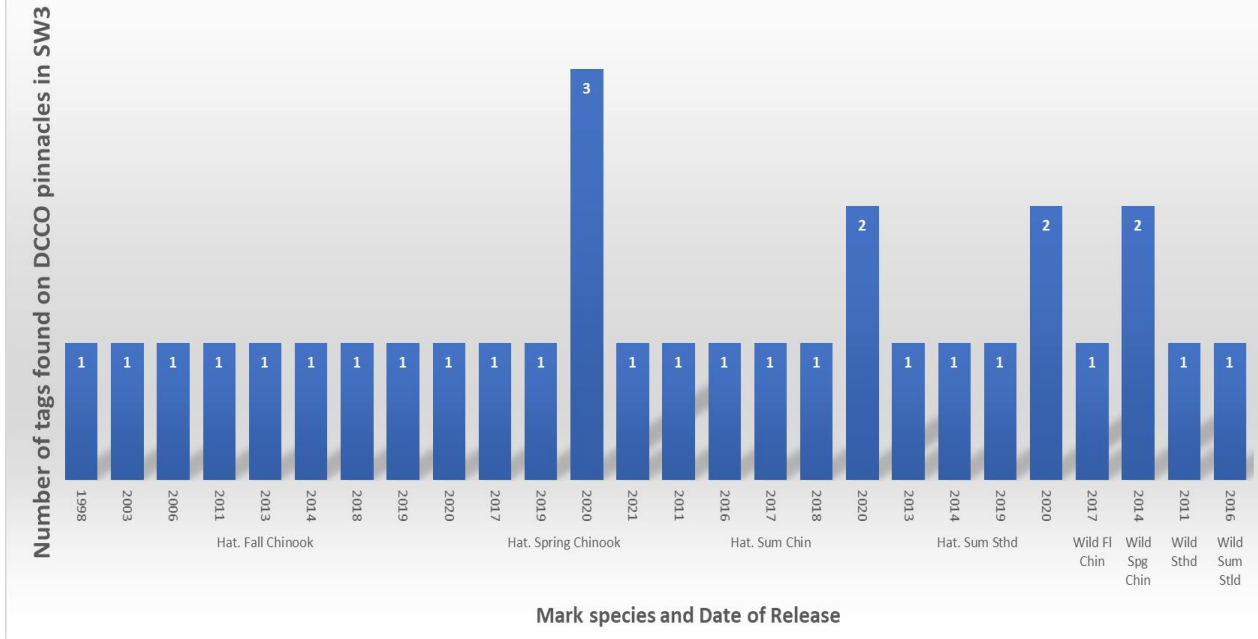
Orange lines = down or missing wires



Agrilaser safe use locations for DCCO and GULL deterrence 2021.

Use complies with EM 385-1-1, ANSI

PIT tag Mark Recovery Recaptures found on dominant DCCO resting sites SW3 TDA  
Lone Pine Island 11/2021



PIT tags found from one of multiple scan sites.

	Secchi:		USGS°F
12/12	3.5	Sun	45.7
12/13	4.0	Mon	45.1
12/14	4.0	Tue	44.7
12/15	4.0	Wed	44.5
12/16	3.0	Thurs	44.2
12/17	3.5	Fri	44.1
12/18	4.0	Sat	43.9
	3.7	median	44.5

The Dalles Dam Daily Readings and Averages for  
Temperatures, Secchi, Entrances, and Spill

out of criteria

Date:	North Ladder		East Ladder										
	Differential	N1 Depth	East Entrance					West Entrance			South Entrance		
			Differential	E1 Depth	E2 Depth	E3 Depth	JP 6	Differential	W1	W2	W3	Differential	S1
12/19	1.3	9.9	Fish Turbines off at 00:00 12/1 EL dewatered 12/2										
12/20	1.3	9.8											
12/21	1.3	9.8											
12/22	1.3	9.6											
12/23	1.3	9.7											
12/24	0.0	0.0											
12/25													
<b>AVG:</b>	1.1	8.1											

*Fishways are inspected twice daily. Overnight trend monitored via Old SCADA operating at west entrance.*