

# The Dalles Dam Fishway Status Report

Inspection Period: 12/12 - 12/18, 2021

## THE DALLES DAM



US Army Corps  
of Engineers  
Portland District

The Dalles Project-Fisheries  
P.O. Box 564  
The Dalles, OR 97058-9998  
Phone: 541-506-3800

<b>The Dalles Dam</b>	<b>Inspections OOC</b>	<b>Criteria Limit</b>	<b>Total Number of Inspections:</b>		<b>Temperature:</b> 46.7 °F
			<b>Comments:</b> refished EFL below TW 12/14		<b>Weekly Ave. Secchi:</b> 4.0

### NORTH FISHWAY

Exit differential	0	≤ 0.5'		
Count station differential	0	≤ 0.3'		
Weir crest depth	0	1.0' ± 0.1'		
Entrance weir N1	0	depth (≥ 8')	Weekly average	66.8
Entrance Differential	0	1.0' - 2.0'	Weekly average	1.3
Entrance weir N2	0	Closed		
PUD Intake differential	0	≤ 0.5'	Significant aquatic weeds accumulating. Rake turned over to PUD operations.	

### EAST FISHWAY - out of service

Exit differential		≤ 0.5'		
Removable weirs 154-157		Per forebay		
Weir 158-159 differential		1.1' ± 0.1'		
Count station differential		≤ 0.3'		
153 Weir crest depth		1.0' ± 0.1'		
Junction pool weir JP6		> 7.0'	Average for week =	
East entrance differential		1.0' - 2.0'		
Entrance weir E1		No criteria		
Entrance weir E2		depth (≥ 8')		
Entrance weir E3		depth (≥ 8')		
Collection channel velocity		1.5 - 4 fps	Dewatered	
Transportation channel velocity		1.5 - 4 fps	Dewatered	
North channel velocity		1.5 - 4 fps	2.6 fps 12/7/21	
South channel velocity		1.5 - 4 fps	Dewatered	
West entrance differential		1.0' - 2.0'		Week ave. 0.0
Entrance weir W1		depth (≥ 8')		Week ave. 0.0
Entrance weir W2		depth (≥ 8')		Week ave. 0.0
Entrance weir W3		No criteria	Closed	
South entrance differential		1.0' - 2.0'		Week ave. 0.0
Entrance weir S1		depth (≥ 8')		Week ave. 0.0
Entrance weir S2		depth (≥ 8')		Week ave. 0.0

### JUVENILE BYPASS

Sluicgate operation	0	Units 1,8, 18	Gates over MU1/1-2, moved to MU4, MU8/1-3, MU18-2 open. Endgate closed Dec16	
Turbine trashrack drawdown	0	<1.5', biwkly	10/20/21, all gatewells in criteria.	
Spill volume/pattern	0	1 to 8	Spill closed 9/1/21	
Turbine Unit Priority	0	per FPP	Mus 1-3 OOS due to crane rail replacement work.	
Gatewells	0	Weekly	No mortality 11/17/2021.	

## OTHER ISSUES:

### Current Unit Outages

- T10 (MU19 & 20) FOOS through 10/27/2022 due to acetylene levels
  - MU12 OOS 0001 4/12/2021 – 1700 10/27/2022 for Annual & Cooler Upgrades
  - MU19 OOS 0630 6/27/2021 – 1700 10/27/2022 for Top Plate Cover Upgrade
- Navlock outage Feb 13-Mar19  
F1 and F2 OOS 12/01/2021 RTS 1/15/2021

### Maintenance

Permanent oil boom removed from east exit for repairs. Attachment bracket redesign in engineering. Install by March1.  
Fishway automation replacement work in progress. Installing weir level sensors.  
Calibrations: North channel openings in criteria.  
MU19 dewatered for overhaul. 6' sturgeon removed from scroll case. 8 Catfish removed from draft tube. Sturgeon transport method being reviewed.  
Spillway assessment (MRER); Spillgates 1- 9 rehab date estimate 2034. Includes replacement of spillbay 9 trunnion pin repair

### Predators

Few cormorants foraging in SW2 & 3. Bald eagles beginning to show up.  
Western gulls foraging at nav lock and in PH1/ PH2

### Research/Construction/Contractors

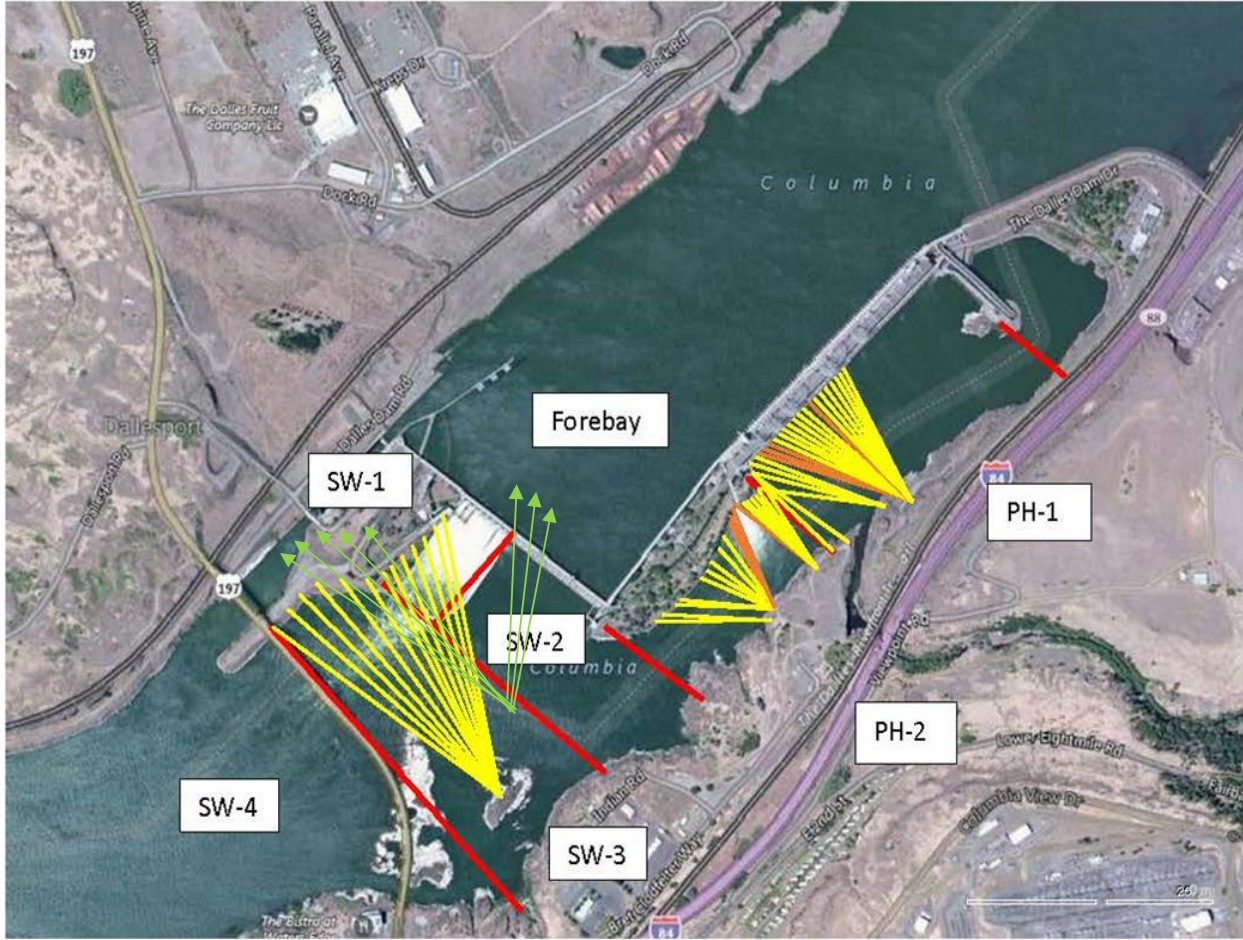
[TD-USGS °F](#)  
AWS intake trashrack/trash rake- No funding FY22.  
Fish Accords Lamprey Passage plan ongoing at 30% DDR junction pool LPS. Also working on entrance weir guide plating design.  
PITAGS north and east fishladder data collection at count stations continues.  
Fish unit rehab - Phase 1A on hold. Date to be determined. Planning operation with AWS backup water supply during construction.  
Northern Pikeminnow Management Program season concluded w/1384 native pikeminnow removed YTD. Bass and walleye released continued another year.  
PUD excavating for concrete work for new juvenile sampling facility.  
Crane rail replacement underway on intake deck units 1-4. Clearance issue on new concrete being addressed.

### Fishway Operations

Ice Trash sluiceway opened 24/7. MU4/1-2 and MU18/1-2 opened through Dec15. Endgate closed Dec16.  
North fishladder in full operation

Approved by: Ron Twiner, Operation Project Manager, The Dalles Dam

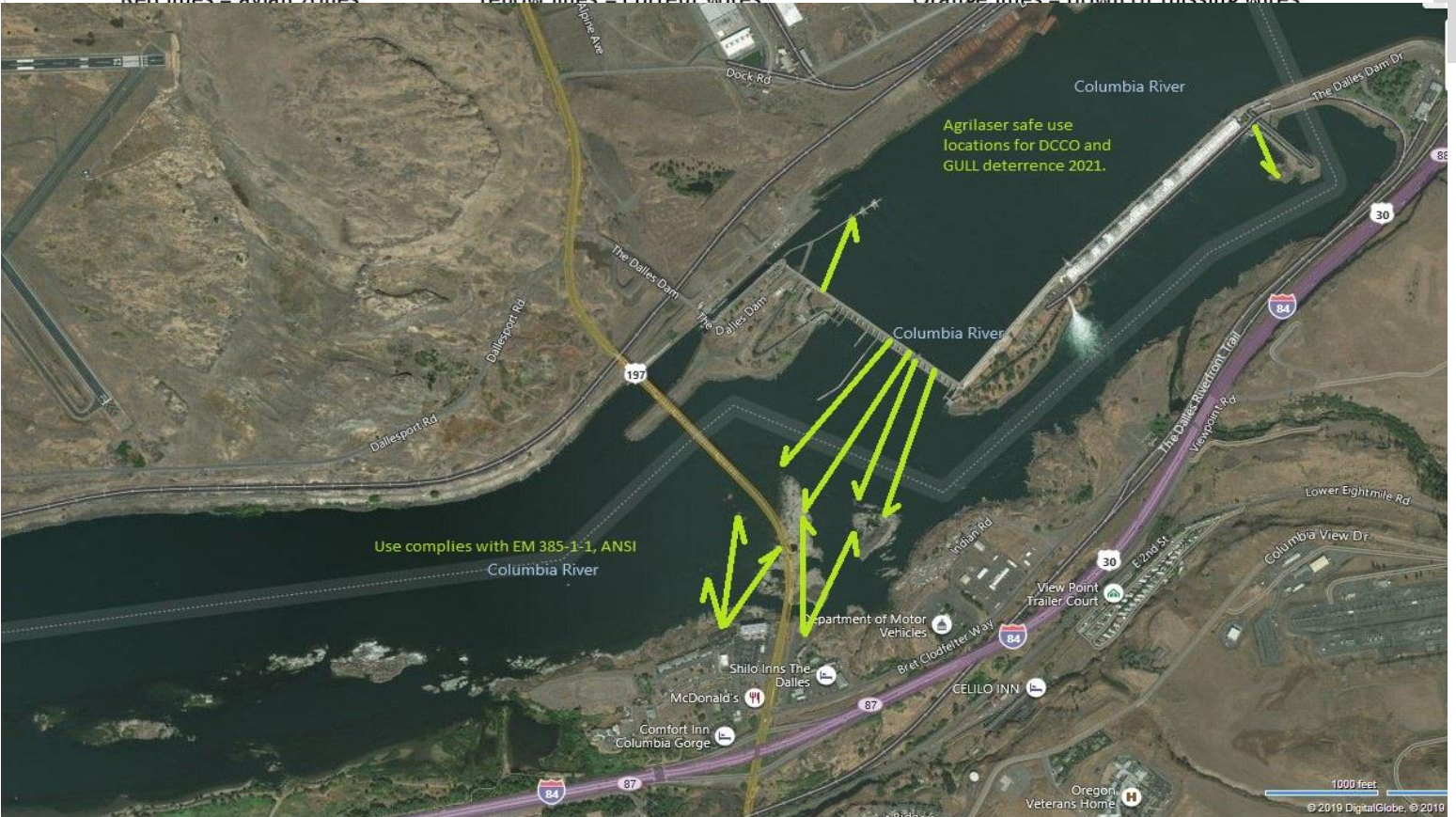
New Avian Lines and laser deterrent zones



Red lines = avian zones

Yellow lines = current wires

Orange lines = down or missing wires



Use complies with EM 385-1-1, ANSI

Agrilaser safe use locations for DCCO and GULL deterrence 2021.

	Secchi:		USGS°F
12/12	3.0	Sun	48.3
12/13	3.0	Mon	48.0
12/14	3.5	Tue	47.4
12/15	4.0	Wed	46.7
12/16	5.0	Thurs	46.3
12/17	5.0	Fri	46.2
12/18	4.5	Sat	46.0
	4.0	median	46.7

**The Dalles Dam Daily Readings and Averages for  
Temperatures, Secchi, Entrances, and Spill**

out of criteria

Date:	North Ladder		East Ladder										
	Differential	N1 Depth	East Entrance					West Entrance				South Entrance	
			Differential	E1 Depth	E2 Depth	E3 Depth	JP 6	Differential	W1	W2	W3	Differential	S1
12/12	1.3	66.6	Fish Turbines off at 00:00 12/1 EL dewatered 12/2										
12/6	1.3	66.9											
12/7	1.4	68.0											
12/8	1.4	66.9											
12/9	1.3	66.0											
12/10	1.3	66.7											
12/11	1.3	66.3											
<b>AVG:</b>	<b>1.3</b>	<b>66.8</b>											

*Fishways are inspected twice daily. Overnight trend monitored via Old SCADA operating at west entrance.*

## Avian Predation at TDA 12/13 to 12/16/2021

