

# The Dalles Dam Fishway Status Report

10/31/21

Inspection Period:10/24-10/30/2021

## THE DALLES DAM



US Army Corps  
of Engineers  
Portland District

The Dalles Project-Fisheries  
P.O. Box 564  
The Dalles, OR 97058-9998  
Phone: 541-506-3800

<b>The Dalles Dam</b>	Inspections OOC	Criteria Limit	<b>Total Number of Inspections:</b> 14		<b>Temperature:</b> 57.9 °F
			<b>Comments:</b>		<b>Weekly Ave. Secchi:</b> 5.0

### NORTH FISHWAY

Exit differential	0	≤ 0.5'		
Count station differential	0	≤ 0.3'		
Weir crest depth	0	1.0' ± 0.1'		
Entrance weir N1	0	1.0' - 2.0'	Weekly average	9.4
Entrance Differential	0	depth (≥ 8')	Weekly average	1.3
Entrance weir N2	0	Closed		
PUD Intake differential	0	≤ 0.5'		

### EAST FISHWAY

Exit differential	0	≤ 0.5'		
Removable weirs 154-157	0	Per forebay		
Weir 158-159 differential	0	1.1' ± 0.1'		
Count station differential	0	≤ 0.3'		
153 Weir crest depth	0	1.0' ± 0.1'		
Junction pool weir JP6	0	> 7.0'		
East entrance differential	0	1.0' - 2.0'		
Entrance weir E1	0	No criteria		
Entrance weir E2	0	depth (≥ 8')		
Entrance weir E3	0	depth (≥ 8')		
Collection channel velocity	0	1.5 - 4 fps	2.82 fps 10/21/21 fps, fastest 3.31 MU15, slowest 2.15 MU9	
Transportation channel velocity	0	1.5 - 4 fps	2.66 fps 10/20/21	
North channel velocity	0	1.5 - 4 fps	2.74 fps 10/16/21	
South channel velocity	0	1.5 - 4 fps	3.72 fps 10/20/21	
West entrance differential	0	1.0' - 2.0'	Old SCADA	Week ave. 1.6
Entrance weir W1	0	depth (≥ 8')		Week ave. 9.7
Entrance weir W2	0	depth (≥ 8')		Week ave. 9.7
Entrance weir W3	0	No criteria	Closed	
South entrance differential	0	1.0' - 2.0'		Week ave. 1.5
Entrance weir S1	0	depth (≥ 8')		Week ave. 9.1
Entrance weir S2	0	depth (≥ 8')		Week ave. 9.2

### JUVENILE PASSAGE

Sluicgate operation	0	Units 1,8, 18	Gates over MU1/1-2-3, moved to MU4, MU8/1-3,MU18-2 open	
Turbine trashrack drawdown	0	<1.5', biwkly	10/20/21, all gatewells in criteria.	
Spill volume/pattern	0	1 to 8	Spill closed 9/1/21	
Turbine Unit Priority	0	per FPP	Mus 1-3 OOS due to crane rail replacement work.	
Gatewells	0	Weekly	No fish present. No mortality 10/20/2021.	

## OTHER ISSUES:

### Current Unit Outages

- MU3 OOS 0630 9/20/2021 – 1700 11/24/2021 for Crane Rail Replacement
- MU2 OOS 0630 9/20/2021 – 1700 11/24/2021 for Crane Rail Replacement
- MU1 OOS 0630 9/20/2021 – 1700 11/24/2021 for Crane Rail Replacement
- T10 (MU19 & 20) FOOS through 10/27/2022 due to acetylene levels
- MU12 OOS 0001 4/12/2021 – 1700 10/27/2022 for Annual & Cooler Upgrades
- MU15 OOS 0630 8/2/2021 – 1700 11/04/2021 for Overhaul, Top Plate, Strainer, & T8 Doble Testing
- MU16 OOS 0001 8/2/2021 – 1700 11/04/2021 for Annual, Strainer, & T8 Doble Testing
- MU19 OOS 0630 6/27/2021 – 1700 10/27/2022 for Top Plate Cover Upgrade
- SS02 OOS 10/04/2021 0001 - 11/11/2021 1700 2 Year Overhaul
- MU8 OOS 10/18/2021 0630 – 10/28/2021 1700 for Annual
- MU5 FOOS 10/21/2021 1708 – 10/25/2021 1700 due to Gen. Field Ground Alarm

Spillway assessment (MRER); Spillgates 1- 9 rehab date estimate 2034. Includes replacement of spillbay 9 trunnion pin repair

Permanent oil boom removed from east exit for repairs. Better attachment brackets to be designed and installed.

5 of 6 east fishway collection channel dewatering pumps installed. Ready for east fishway channel dewatering this winter.

Fishway automation replacement resumes with new fiscal year. East exit, east and south entrances complete. West and north on old system.

Calibrations: All openings in criteria. One east and south entrance gates E-3 and S-2 out of calibration but stable and unable to adjust.

### Predators

Cormorants fishing entrances and in SW2 & 3, gulls foraging at shad and **lamprey hotspots (we have lamprey hotspots??)**, Mergansers also a regular as expected during fall migration.

### Research/Construction/Contractors

4 Peaks fish counting concludes 10/31

AWS intake trashrack/trash rake- No funding FY22.

Fish Accords Lamprey Passage plan for The Dalles ongoing at 30% DDR. Looking at **feasibility** of Lamprey Passage Structure at junction pool, with holding tank.

PITAGS north and east fishladder data collection at count stations continues.

Fish unit rehab - Phase 1A on hold. Date to be determined. Planning operation with AWS backup water supply during construction.

Northern Pikeminnow Management Program season concluded w/1384 native pikeminnow removed YTD

PUD removing debris from location where a new juvenile sampling facility will be constructed prior to upcoming fish season 2021/2022

Crane rail replacement underway on intake deck units 1-4. Sluiceways unit 1 moved to unit 4 open.

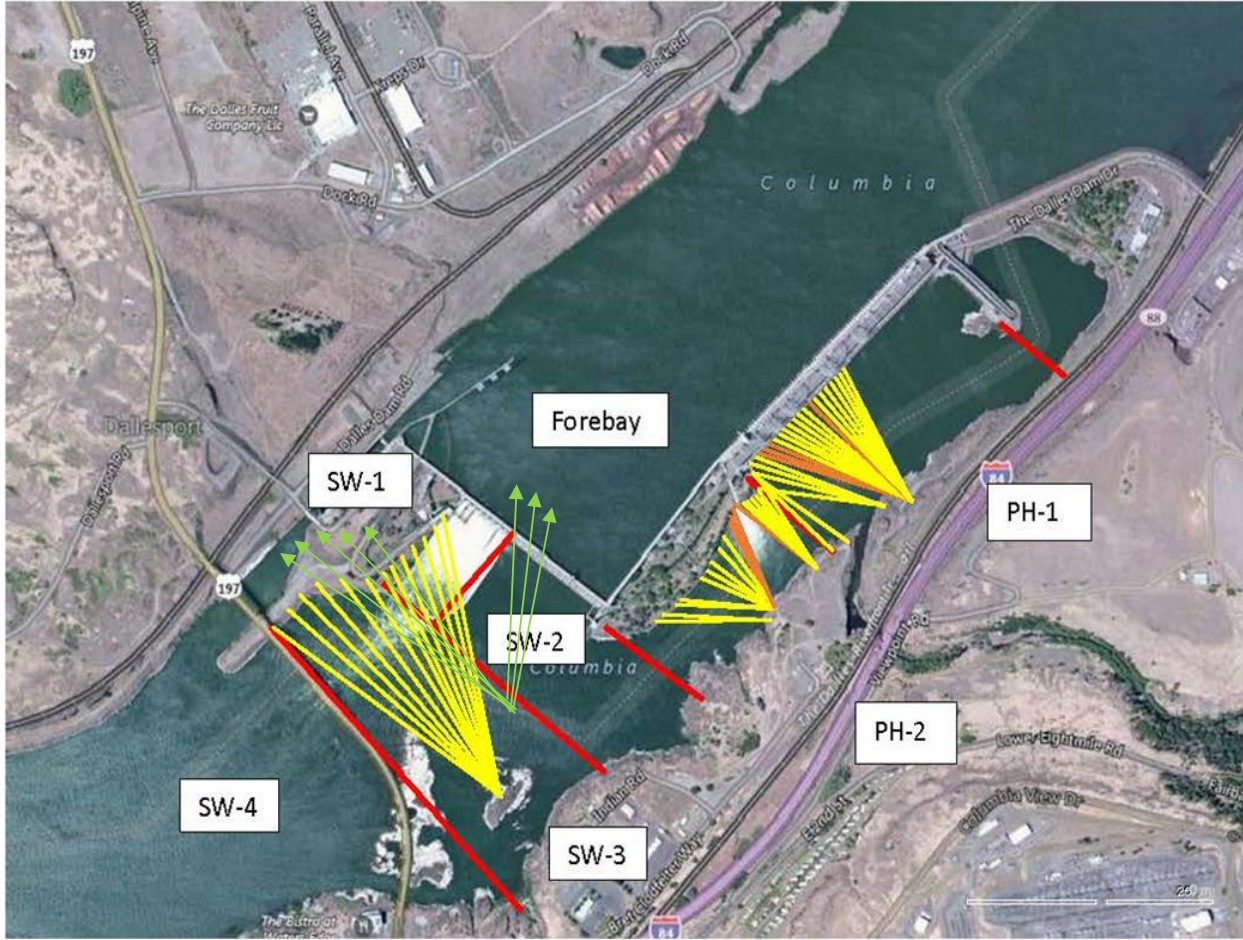
### Fishway Operations

Ice Trash sluiceway opened 24/7. MU4/1-2-3, MU 8/1-2, MU18/2 Sluice openings move to 4 due to concrete-crainerail removal

East and north fish ladders in full operation per Fish Passage Plan.

Approved by: Ron Twiner, Operation Project Manager, The Dalles Dam

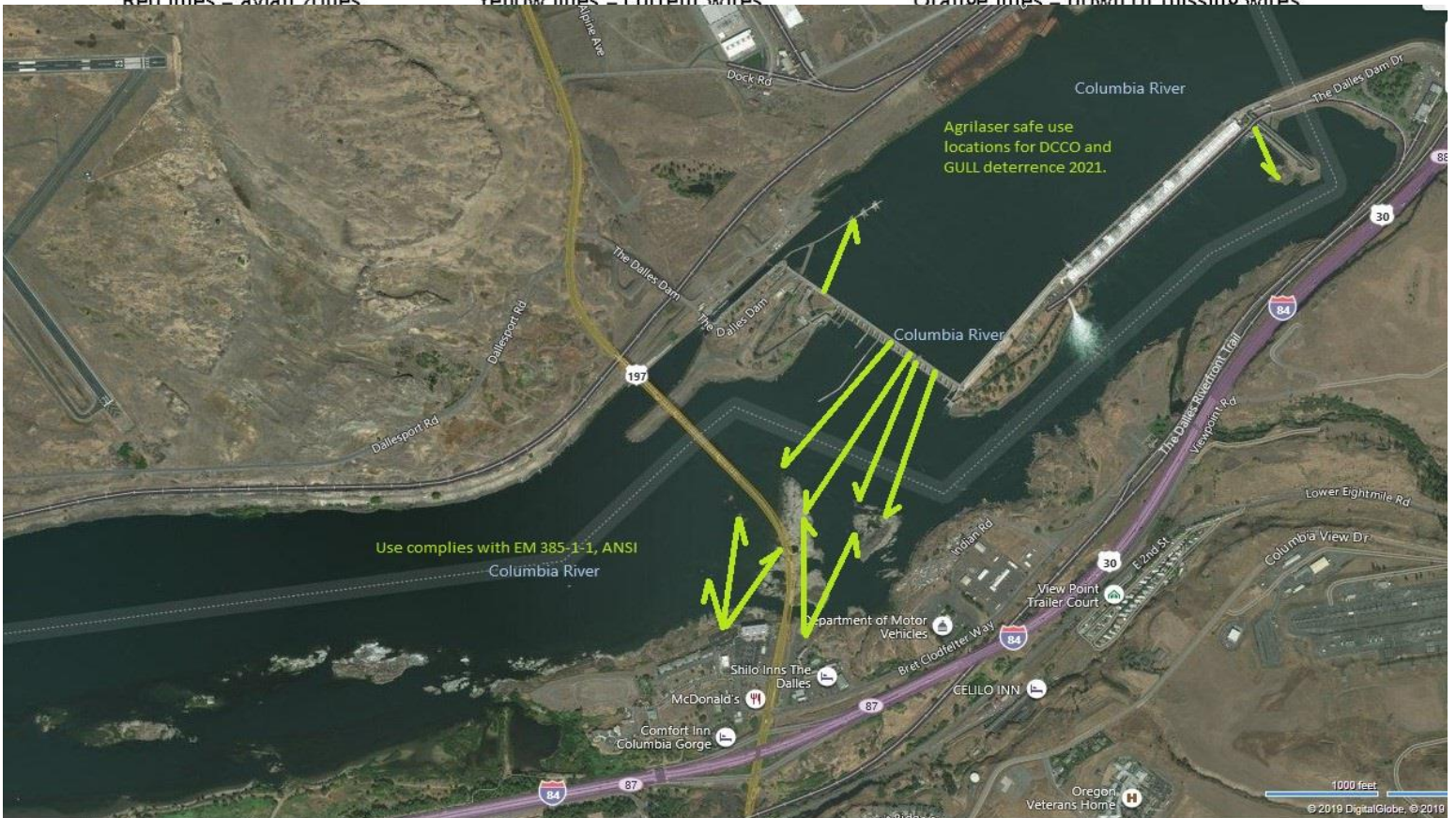
New Avian Lines and laser deterrent zones



Red lines = avian zones

Yellow lines = current wires

Orange lines = down or missing wires

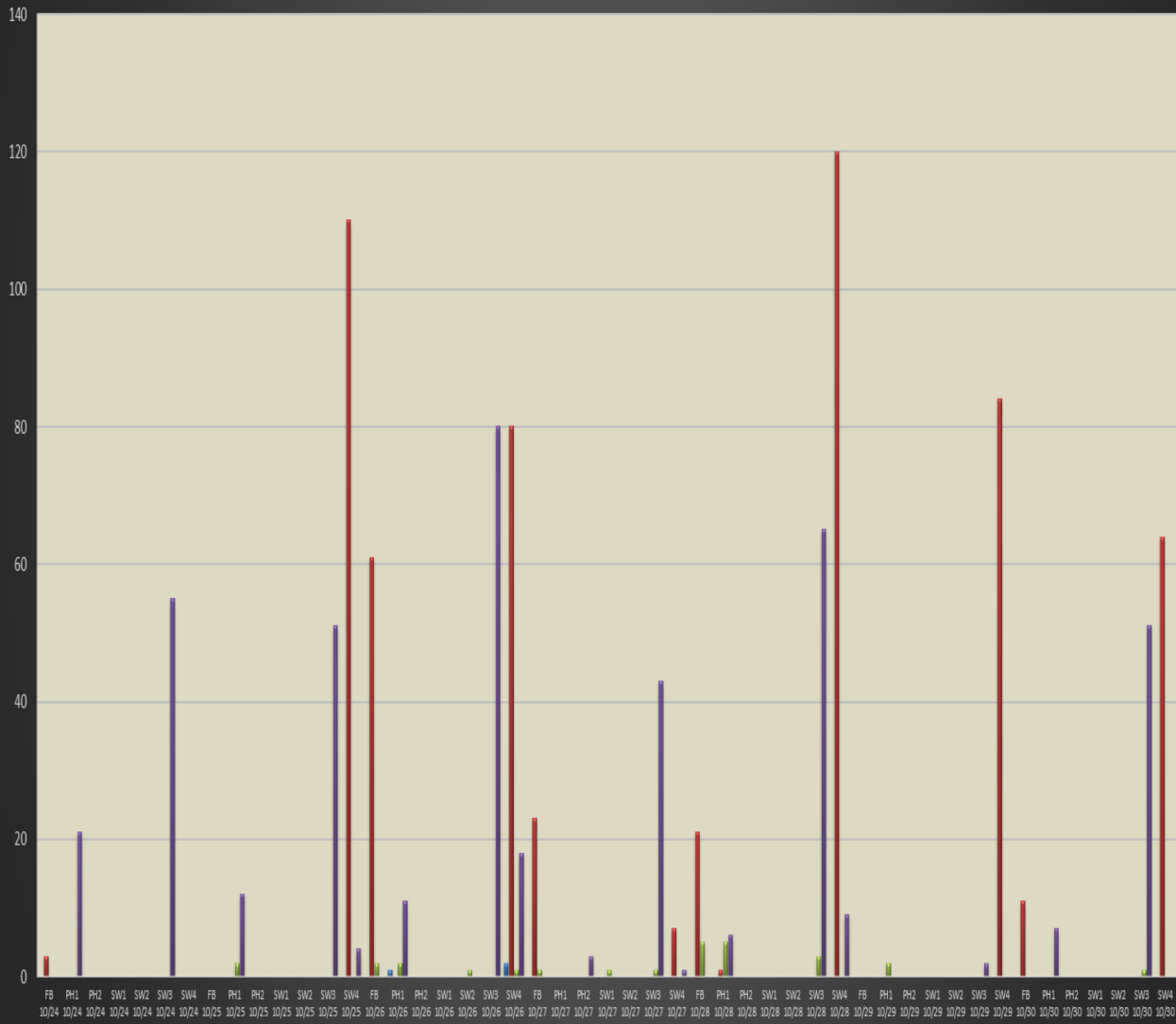


Use complies with EM 385-1-1, ANSI

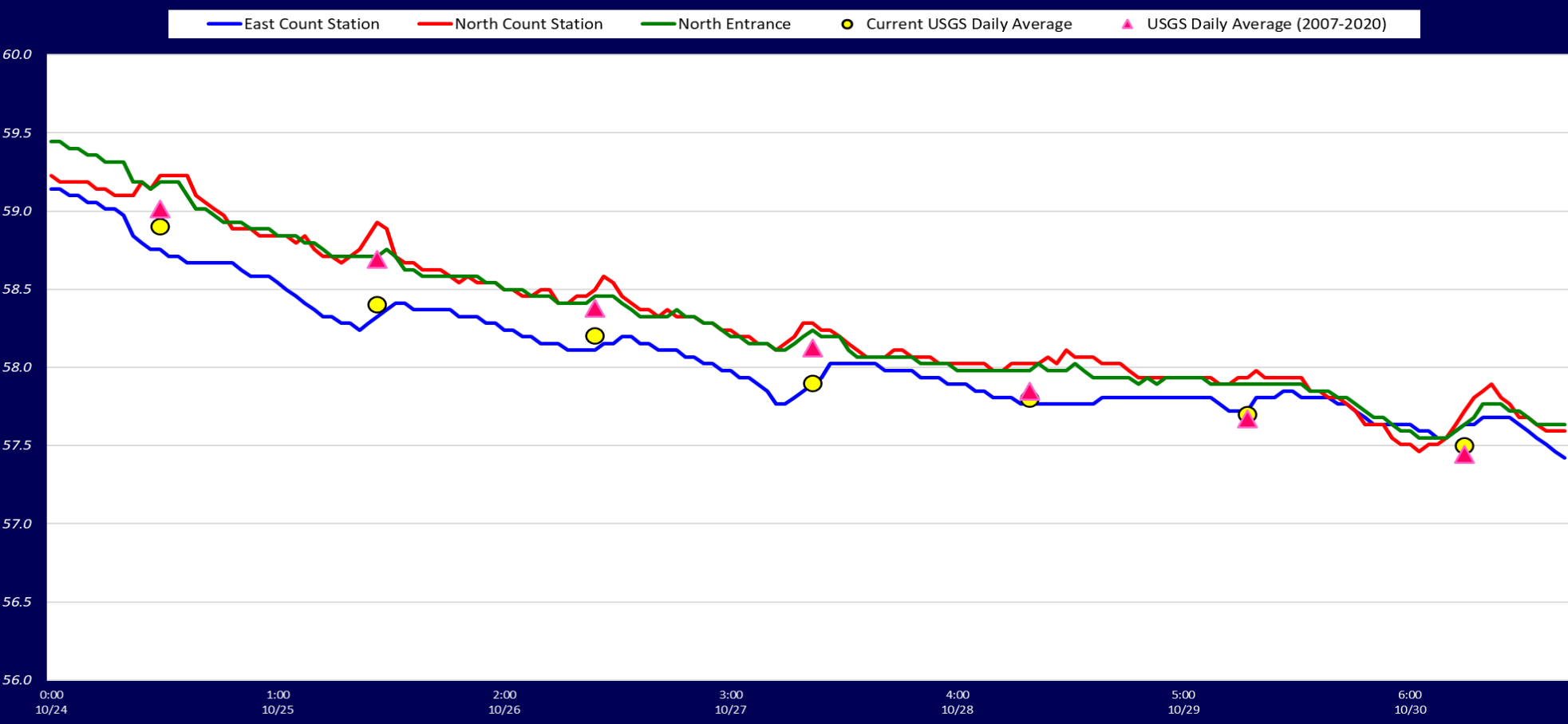
Agrilaser safe use locations for DCCO and GULL deterrence 2021.

# Gull & Cormorant Activity

▼ GULL F ▼ GULL NF ▼ DCCOF ▼ DCCONF



### Adult Fish Ladders-River Temperatures



Secchi:		USGS°F
5.0	Sun	58.9
5.0	Mon	58.4
5.0	Tue	58.2
5.0	Wed	57.9
5.0	Thurs	57.8
5.0	Fri	57.7
5.0	Sat	57.5
5.0	median	57.9

The Dalles Dam Daily Readings and Averages for  
Temperatures, Secchi, Entrances, and Spill

E1 and W3 no criteria  
out of criteria

Date:	North Ladder		East Ladder											
	Differential	N1 Depth	East Entrance					West Entrance				South Entrance		
			Differential	E1 Depth	E2 Depth	E3 Depth	JP 6	Differential	W1	W2	W3	Differential	S1	S2
10/24	1.3	9.2	1.5	6.3	11.4	12.0	9.3	1.5	9.6	9.6	-3.5	1.6	8.3	8.4
	1.3	9.2	1.4	6.7	11.7	12.3	9.6	1.5	9.6	9.6	-3.0	1.5	8.6	8.6
10/25								1.5						
	1.3	9.3	1.4	6.6	11.4	12.2	9.5	1.5	9.8	9.8	-3.1	1.5	8.6	8.7
	1.4	9.2	1.4	6.7	11.5	12.3	9.7	1.6	9.7	9.7	-2.9	1.5	8.7	8.8
10/26								1.5						
	1.4	8.1	1.3	6.8	11.9	12.7	9.8	1.5	9.8	9.8	-2.9	1.5	8.8	8.9
	1.4	9.1	1.4	6.4	11.5	12.2	9.4	1.5	9.7	9.7	-3.1	1.5	8.5	8.6
10/27								1.6						
	1.2	9.8	1.5	7.5	11.6	12.4	10.5	1.5	9.8	9.8	-2.1	1.4	9.4	9.5
	1.3	9.6	1.5	7.3	11.4	12.2	10.3	1.6	9.7	9.7	-2.3	1.4	9.9	9.9
10/28								1.6						
	1.4	9.6	1.3	7.9	11.6	12.4	10.8	1.7	9.9	9.9	-2.0	1.3	9.8	9.8
	1.3	9.7	1.6	7.4	11.3	12.1	10.4	1.6	9.8	9.8	-2.1	1.4	9.5	9.6
10/29														
	1.3	9.7	1.6	7.2	11.1	12.0	10.2	1.6	9.7	9.7	-2.3	1.4	9.3	9.5
	1.3	9.7	1.6	7.2	11.1	12.0	10.2	1.6	9.8	9.8	-2.4	1.4	9.3	9.4
10/30														
	1.4	9.5	1.5	7.5	11.6	12.5	10.5	1.6	9.6	9.6	-2.1	1.4	9.6	9.6
	1.3	9.5	1.5	7.1	11.2	12.1	10.1	1.6	9.8	9.8	-2.6	1.5	9.0	9.1
<b>AVG:</b>	<b>1.3</b>	<b>9.4</b>	<b>1.5</b>	<b>7.0</b>	<b>11.5</b>	<b>12.2</b>	<b>10.0</b>	<b>1.6</b>	<b>9.7</b>	<b>9.7</b>	<b>-2.6</b>	<b>1.5</b>	<b>9.1</b>	<b>9.2</b>

Fishways are inspected twice daily. Overnight trend monitored via Old SCADA operating at west entrance.