

The Dalles Dam Fishway Status Report

7/4/21

Inspection Period: 6/27-7/3

THE DALLES DAM



US Army Corps
of Engineers
Portland District

The Dalles Project-Fisheries
P.O. Box 564
The Dalles, OR 97058-9998
Phone: 541-506-3800

The Dalles Dam	Inspections OOC	Criteria Limit	Total Number of Inspections: 14		Temperature: 68.7 °F
			Comments: HOT		Weekly Ave. Secchi: 5.4

NORTH FISHWAY

Exit differential	0	≤ 0.5'		
Count station differential	0	≤ 0.3'		
Weir crest depth	0	1.0' ± 0.1'		
Entrance weir N1	0	1.0' - 2.0'	Weekly average	10.1
Entrance Differential	0	depth (≥ 8')	Weekly average	1.3
Entrance weir N2	0	Closed		
PUD Intake differential	14	≤ 0.5'	Unable to rake PUD intake, differential between .6 and .7'.	

EAST FISHWAY

Exit differential	0	≤ 0.5'		
Removable weirs 154-157	0	Per forebay		
Weir 158-159 differential	0	1.1' ± 0.1'		
Count station differential	0	≤ 0.3'		
153 Weir crest depth	0	1.0' ± 0.1'		
Junction pool weir JP6	0	> 7.0'		
East entrance differential	0	1.0' - 2.0'	Week ave.	1.5
Entrance weir E1	0	No criteria		
Entrance weir E2	0	depth (≥ 8')	Week ave.	11.5
Entrance weir E3	0	depth (≥ 8')	Week ave.	13.2
Collection channel velocity	0	1.5 - 4 fps	2.69 fps 6/29/21	
Transportation channel velocity	0	1.5 - 4 fps	2.57 fps 6/29/2021	
North channel velocity	0	1.5 - 4 fps	2.56 fps, 6/29/2021	
South channel velocity	0	1.5 - 4 fps	2.19 fps 6/29/21	
West entrance differential	0	1.0' - 2.0'	Old SCADA	Week ave. 1.4
Entrance weir W1	0	depth (≥ 8')		Week ave. 11.6
Entrance weir W2	0	depth (≥ 8')		Week ave. 11.6
Entrance weir W3	0	No criteria	Closed	
South entrance differential	0	1.0' - 2.0'		Week ave. 1.5
Entrance weir S1	0	depth (≥ 8')		Week ave. 10.0
Entrance weir S2	0	depth (≥ 8')		Week ave. 9.0

JUVENILE PASSAGE

Sluiceway operation	0	Units 1, 18	Gates over MU1/1-2-3, MU8/1-3, MU18-2 open	
Turbine trashrack drawdown	0	<1.5', biwklly	6/29/21, all gatewells in criteria.	
Spill volume/pattern	0	1 to 8	Spilling 8 gates.	
Turbine Unit Priority	0	per FPP		
Gatewells	0	Weekly	Few Mini jacks and smolts in gatewells, 6/29/2021, 1 adult shad mort.	

OTHER ISSUES:

Current Unit Outages

MU7 OOS 0600 6/1/2021 – 1700 7/15/2021 Overhaul
T10 (MU19 & 20) FOOS through 10/27/2022 due to acetylene levels
MU12 OOS 0001 4/12/2021 – 1700 10/27/2022 for Annual & Cooler Upgrades
MU13 OOS 7/6/2021 – 7/15/2021 1700 for Annual
MU19 OOS 6/27/2021 0630 – 10/27/2022 1700 for Top Plate Cover Upgrade

Maintenance

Spillway assessment (MRER); Spillgates 1- 9 rehab date estimate 2034. Includes replacement of spillbay 9 trunnion pin repair
PUD intake rake returned to service with temporary power. Exploring permanent options.
Five of 6 east fishway collection channel dewatering pumps removed for repair/rehab. Work to resume in July.
Fishway automation replacement on hold from lack of staff. East exit, east and south entrances complete. West and north operating with old system.
Calibrations 6/29/21. All gates in criteria >8'.

Predators

Hérons reduced presence in east fishladder with new netting, frequent ladder walks and USDA hazing.
USDA hazing cormorants feeding at east fishway exit and entrance.
Increased gull/pelican numbers below spillway in SW4. High pelican foraging numbers in SW3-4. Shad running.
No opportunity for Green laser use for piscivorous bird hazing testing.
Pikeminnow dam angling ongoing. Removing native pikeminnow, yet **All invasive bass/walleye by-catch continue to be RELEASED per ODFW requirement.**
Game camera Images at east ladder exit indicate herons during daylight period and cormorants in daylight and at night?

Research/Construction/Contractors

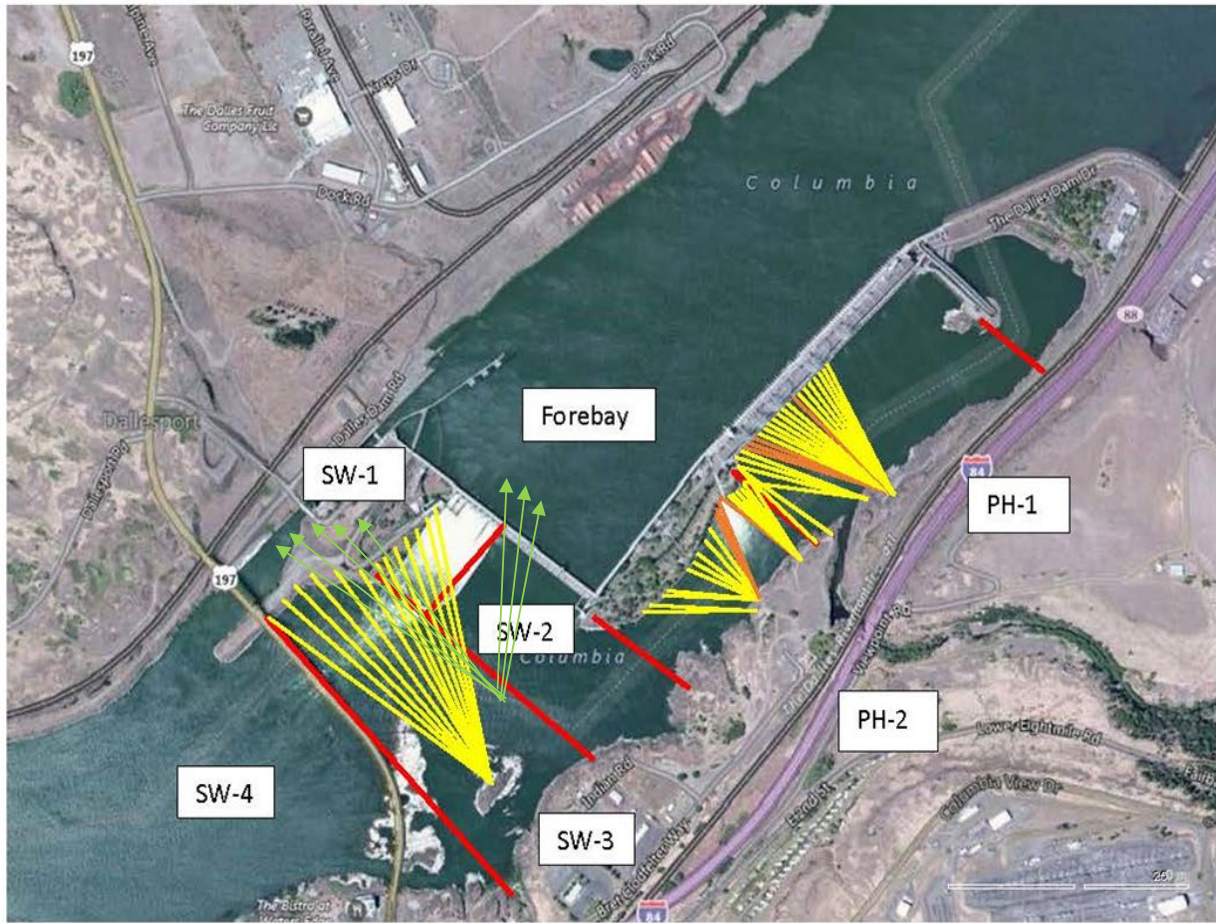
Fish counters started Apr1. No issues.
AWS intake trashrack - EDR funded for FY21 to investigate solution for debris plugging issue. PDT meetings in progress.
PITAGS north and east fishladder data collection at count stations continues.
Fish unit rehab - Phase 1A on hold. Planning operation with AWS backup water supply during construction.
Northern Pikeminnow Management Program w/51npm for the week, 1049 YTD

Fishway Operations

Ice Trash sluiceway opened 24/7. MU1/1-2-3, MU 8/1-2, MU18/2
East and north fishladders in full operation per Fish Passage Plan.
New automation installed at east exit, east entrance and south entrance working well with minor adjustments.
Spillway open at 40% river flow

Approved by: Ron Twiner, Operation Project Manager, The Dalles Dam

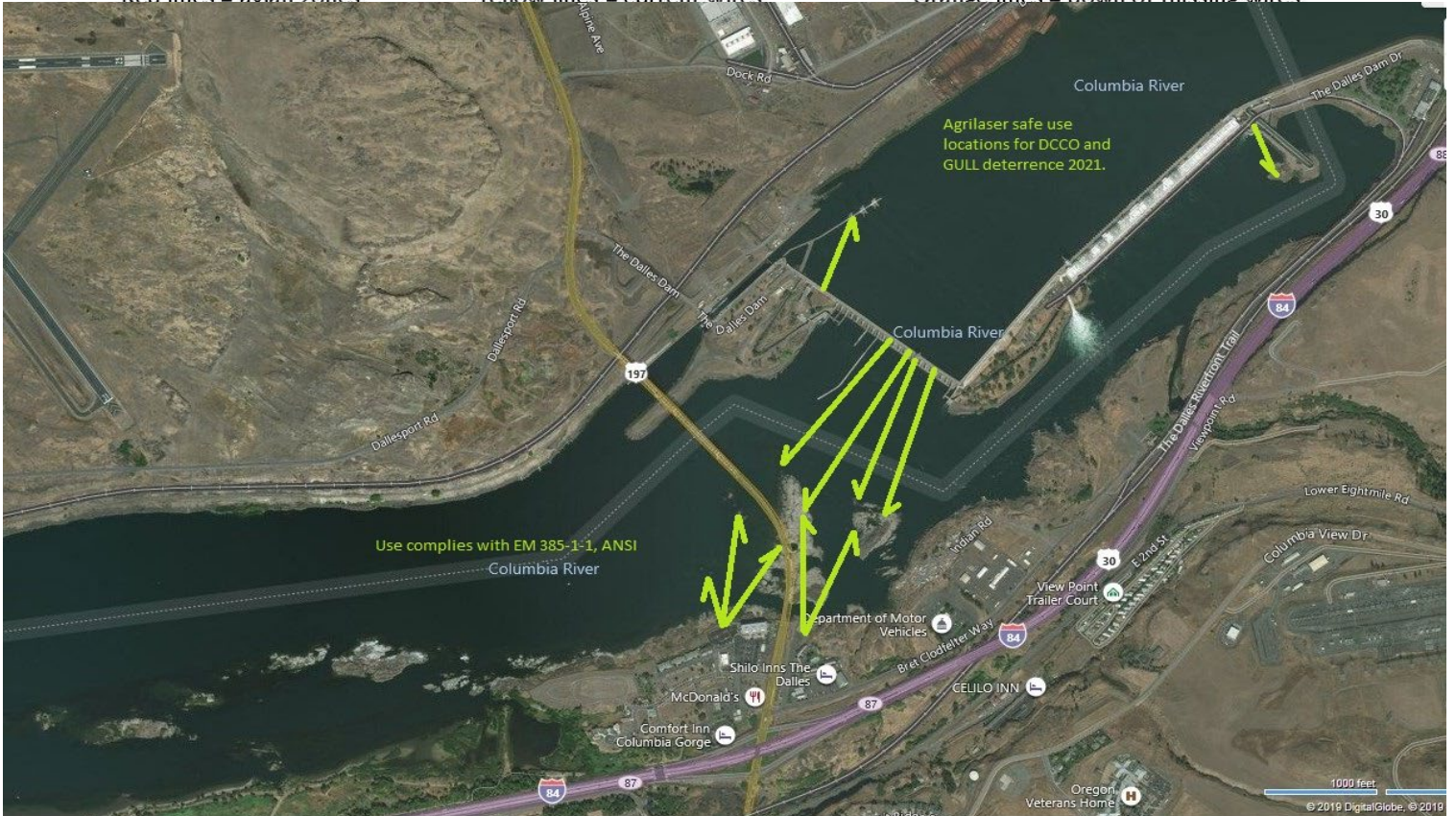
New Avian Lines and laser deterrent zones



Red lines = avian zones

Yellow lines = current wires

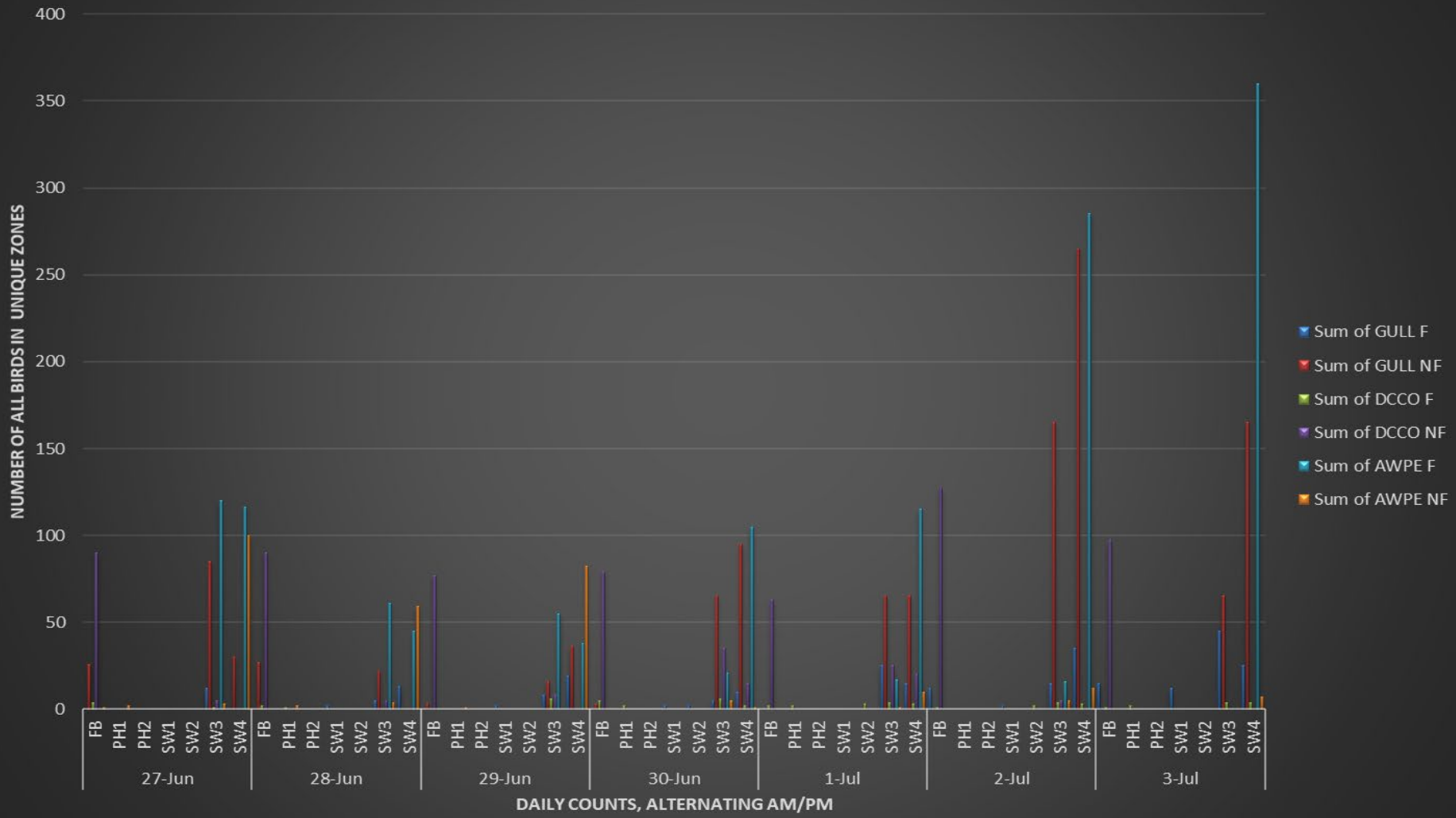
Orange lines = down or missing wires



Use complies with EM 385-1-1, ANSI

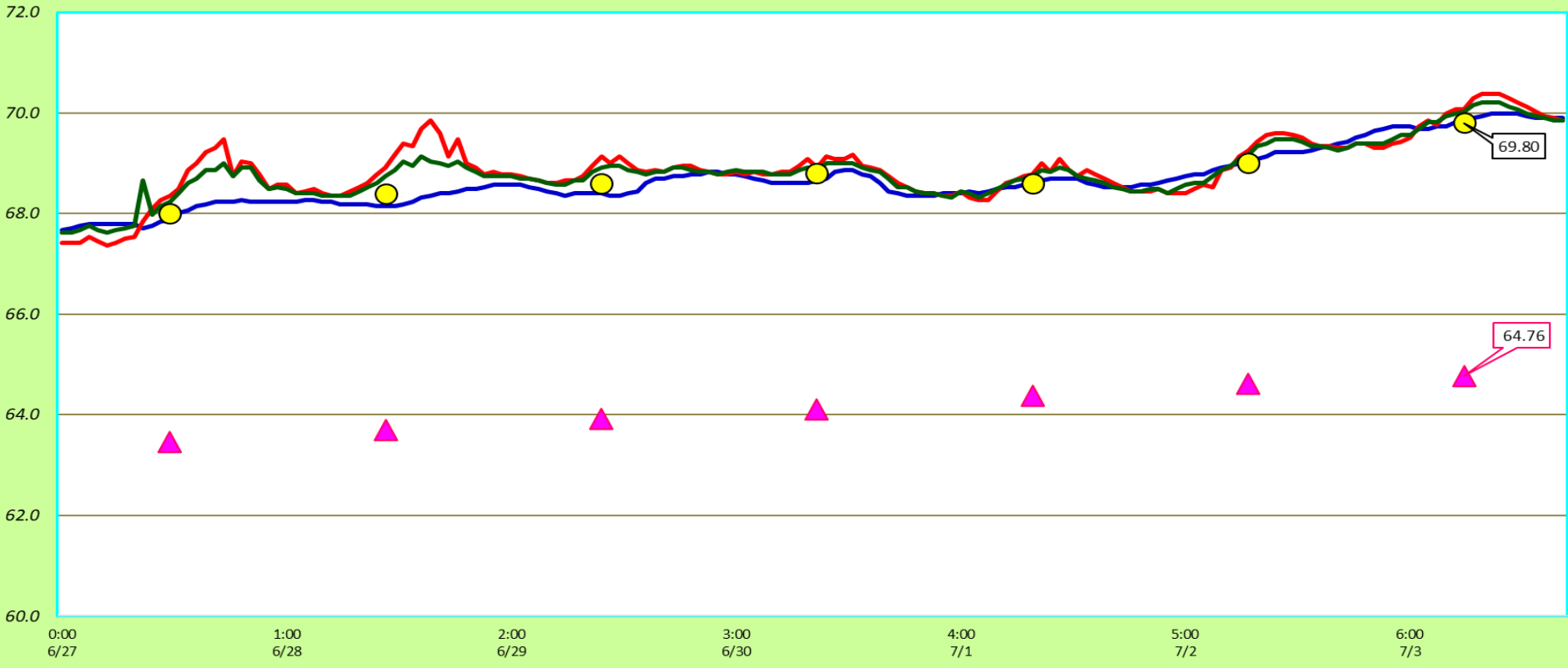
Agrilaser safe use locations for DCCO and GULL deterrence 2021.

TDA Avian Predators in Daily Counts 6/27 to 7/3/2021



Adult Fish ladders-River Temperature

— East Count Station — North Count Station — North Entrance ● Current USGS Daily Average ▲ USGS Daily Average (2007-2020)



Secchi:		°F
6/27	Sun	68.0
6/28	Mon	68.4
6/29	Tue	68.6
6/30	Wed	68.8
7/1	Thurs	68.6
7/2	Fri	69.0
7/3	Sat	69.8
	AVG	68.7

The Dalles Dam Daily Readings and Averages for
Temperatures, Secchi, Entrances, and Spill

E1 and W3 no criteria
out of criteria

Date:	North Ladder		East Ladder											
			East Entrance					West Entrance				South Entrance		
	Differential	N1 Depth	Differential	E1 Depth	E2 Depth	E3 Depth	JP 6	Differential	W1	W2	W3	Differential	S1	S2
6/27	1.2	10.1	1.7	6.2	10.6	12.9	11.2	1.4	11.0	11.0	-0.3	1.6	9.8	8.0
	1.3	10.1	1.4	6.9	11.5	13.8	11.9	1.5	10.9	10.9	-1.0	1.5	10.1	8.3
6/28	1.3	10.2	1.5	7.3	11.6	13.9	12.3	1.5	10.8	10.8	-0.5	1.6	10.1	8.2
	1.3	10.1	1.3	7.9	12.2	14.5	13.0	1.6	10.9	10.9	0.0	1.4	10.5	8.6
6/29	1.4	10.1	1.6	8.0	11.0	13.4	13.0	1.5	11.0	11.0	0.2	1.5	10.7	8.7
	1.3	10.0	1.5	9.4	11.1	13.4	14.4	1.6	11.9	11.9	1.5	1.5	10.7	9.3
6/30								1.5						
	1.3	10.1	1.6	8.3	10.8	13.5	13.4	1.5	12.1	12.1	0.4	1.5	10.9	8.7
7/1	1.3	10.2	1.4	8.7	11.6	14.5	13.7	1.5	11.9	11.9	0.8	1.5	9.7	9.6
								1.4						
7/1	1.3	10.1	1.6	7.5	10.6	13.7	12.5	1.4	11.9	11.9	-0.2	1.5	9.6	9.4
	1.3	10.1	1.5	8.7	11.1	12.6	12.7	1.4	12.0	12.0	-0.2	1.4	9.8	9.7
7/2								1.3						
	1.3	9.1	1.5	8.4	12.6	12.6	12.4	1.3	11.0	11.0	-0.9	1.5	9.2	9.1
7/2	1.4	10.1	1.3	11.4	12.6	12.6	13.4	1.4	12.6	12.6	0.4	1.4	9.7	9.6
								1.3						
7/3	1.3	10.2	1.6	10.9	11.3	11.6	12.9	1.3	11.9	11.9	0.2	1.5	9.7	9.5
	1.3	10.2	1.5	11.2	11.6	11.9	13.2	1.5	12.0	12.0	0.3	1.4	9.7	9.6
AVG:	1.3	10.1	1.5	8.6	11.5	13.2	12.8	1.4	11.6	11.6	0.0	1.5	10.0	9.0

Fishways are inspected twice daily. Overnight trend monitored via Old SCADA operating at west entrance.

Banded pelican on rock west of TDA on 6/29/2021. Third AWPE from the left, pale blue band.

