

The Dalles Dam Fishway Status Report

4/18/2021

Inspection Period: 04/11-04/17

THE DALLES DAM



The Dalles Project-Fisheries
P.O. Box 564
The Dalles, OR 97058-9998
Phone: 541-506-3800

The Dalles Dam	Inspections OOC	Criteria Limit	Total Number of Inspections: 18		Temperature: 48.9 °F
			Comments: New Automation working well.		Weekly Ave. Secchi: 5.0

NORTH FISHWAY

Exit differential	0	≤ 0.5'		
Count station differential	0	≤ 0.3'		
Weir crest depth	0	1.0' ± 0.1'		
Entrance differential	0	1.0' - 2.0'	Weekly average	9.8
Entrance weir N1	0	depth (≥ 8')	Weekly average	1.3
Entrance weir N2	0	Closed		
PUD Intake differential	0	≤ 0.5'		

EAST FISHWAY

Exit differential	0	≤ 0.5'		
Removable weirs 154-157	0	Per forebay		
Weir 158-159 differential	0	1.1' ± 0.1'	New automation giving out of criteria alarms for brief periods.	
Count station differential	0	≤ 0.3'		
153 Weir crest depth	0	1.0' ± 0.1'		
Junction pool weir JP6	0	> 7.0'		
East entrance differential	0	1.0' - 2.0'	1 fish unit operation	Week ave. 1.6
Entrance weir E1	0	No criteria		
Entrance weir E2	0	depth (≥ 8')		Week ave. 10.6
Entrance weir E3	0	depth (≥ 8')		Week ave. 10.5
Collection channel velocity	0	1.5 - 4 fps	2.72 fps	Range MU5 1.91- MU21 4.10fps
Transportation channel velocity	0	1.5 - 4 fps	2.95 fps	4/17/2021
North channel velocity	0	1.5 - 4 fps	2.64 fps,	3/6/2021
South channel velocity	0	1.5 - 4 fps	3.57fps	4/17/21
West entrance differential	0	1.0' - 2.0'	Old SCADA	Week ave. 1.3
Entrance weir W1	0	depth (≥ 8')		Week ave. 8.5
Entrance weir W2	0	depth (≥ 8')		Week ave. 8.5
Entrance weir W3	0	No criteria	Closed	
South entrance differential	0	1.0' - 2.0'		Week ave. 1.3
Entrance weir S1	0	depth (≥ 8')	1 fish unit operation	Week ave. 8.2
Entrance weir S2	8	depth (≥ 8')	1 fish unit operation	Week ave. 8.8 Weir 1.0' shallower than value. Working on correction.

JUVENILE PASSAGE

Sluiceway operation	0	Units 1, 18	Gates over 1,8,18 open	
Turbine trashrack drawdown	0	<1.5', biwkly	4/15/21, all gatewells within drawdown criteria.	
Spill volume/pattern	0	1 to 8	Spilling 8 gates.	
Turbine Unit Priority	0	per FPP		
Gatewells	0	Weekly	No mortality. Most gatewells have salmon fry in significant numbers, 4/16/2021	

OTHER ISSUES:

Current Unit Outages

FU2 OOS through 4/27/21

MU13 forced out through 4/8/2021 for Turbine Bearing Cooler Repairs

T10 (MU19 and 20) OOS 10/27/22 acetylene levels

MU22 out 3/1/2021 – 5/20/2021 for Top Plate Cover Upgrades

Maintenance

PUD intake rake back in service. Temporary power supply repair completed.

Five of 6 east fishway collection channel dewatering pumps removed for repair/rehab. Work to resume this summer.

Fishway automation replacement on hold. East exit, east and south entrances complete. West and north operating old system.

4/17/21 Calibration of S2 gate at south entrance is out of calibration. Working on corrections.

AWS in operation with F1 to maintain east ladder flows in criteria. No debris accumulation on AWS intake trashrack.

Spillway assessment (MRER); Spillgates 1- 9 rehab date estimate 2034. Includes replacement of spillbay 9 trunnion pin repair

Predators

Overall gull numbers decreased, but increase in gulls foraging below spillway. Cormorant nesters moved to BPA towers 3/24.

Green laser use for piscivorous bird hazing testing continues. Laser no longer effective moving cormorants off of BPA towers at dusk.

Pikeminnow dam angling resumes next May. **All invasive bass/walleye by-catch release to continue per state requirement for past 5 years.**

Planning PIT scanning in SW3. No tags recovered on Klickitat sandbar 3/19/21. Processing tag data recovered. Avian predator investigation continues.

Research/Construction/Contractors

Fish counters started Apr1. No issues.

AWS intake trashrack - EDR funded for FY21 to investigate solution for debris plugging issue. Team site visit Mar31.

PITAGS north and east fishladder data collection at count stations continues.

Fish unit rehab - Phase 1A on hold. Planning operation with AWS backup water supply during construction.

Fishway Operations

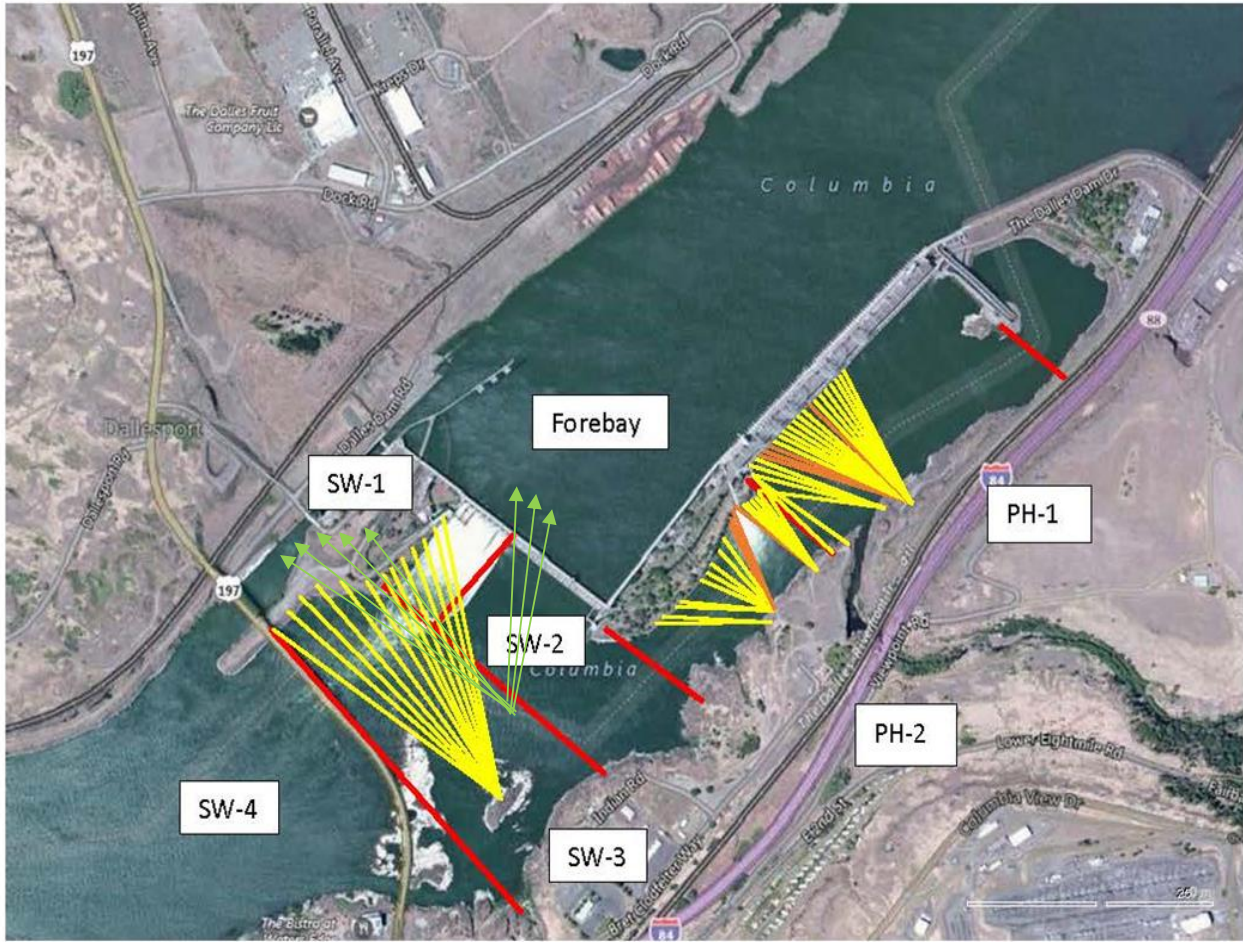
Ice Trash sluiceway opened 24/7. MU1/1-2-3, MU 8/1-3, MU18/2

East and north fishladders in full operation per Fish Passage Plan.

New automation working well within criteria.

Approved by: Ron Twiner, Operation Project Manager, The Dalles Dam

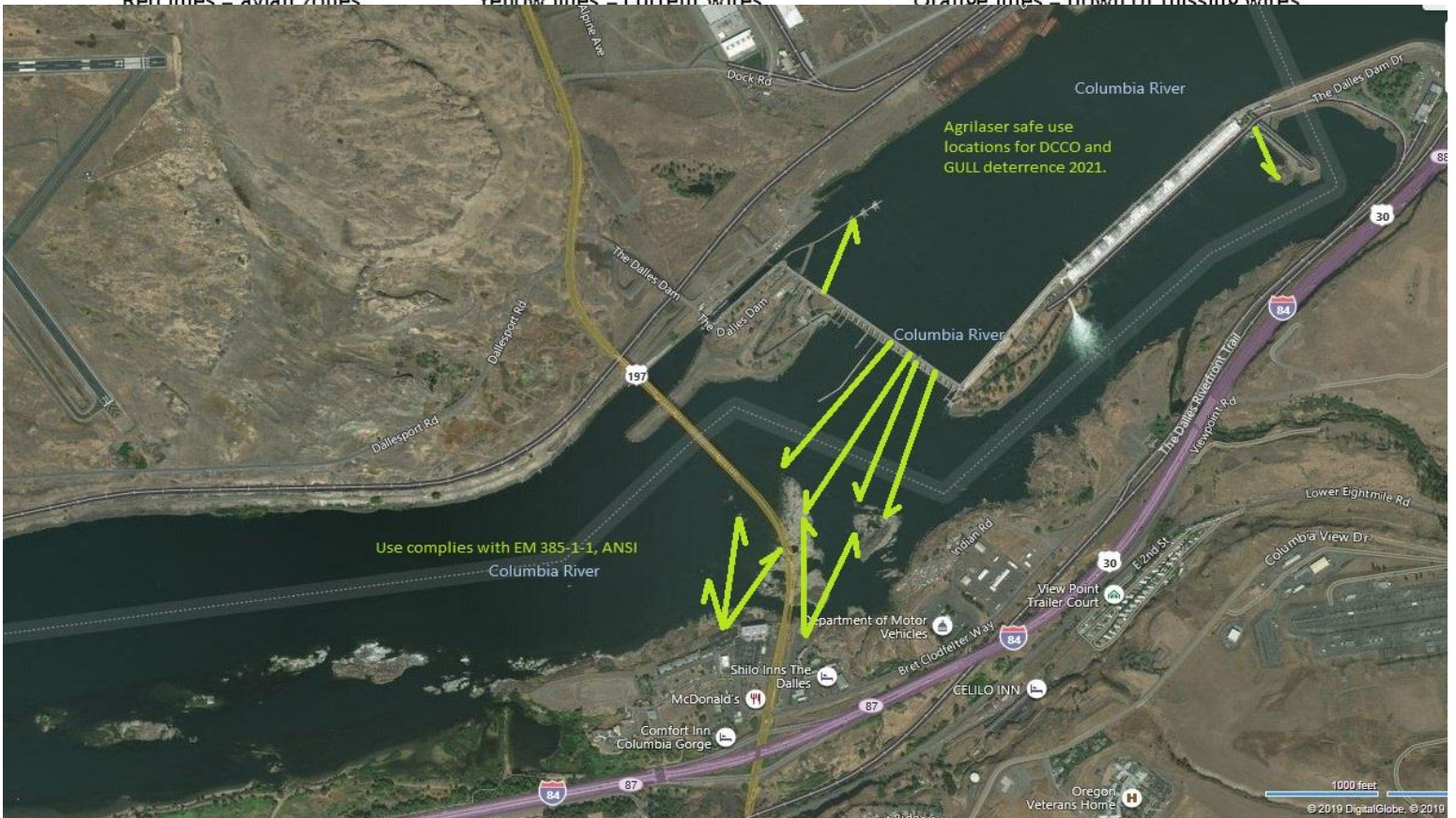
New Avian Lines and laser deterrent zones



Red lines = avian zones

Yellow lines = current wires

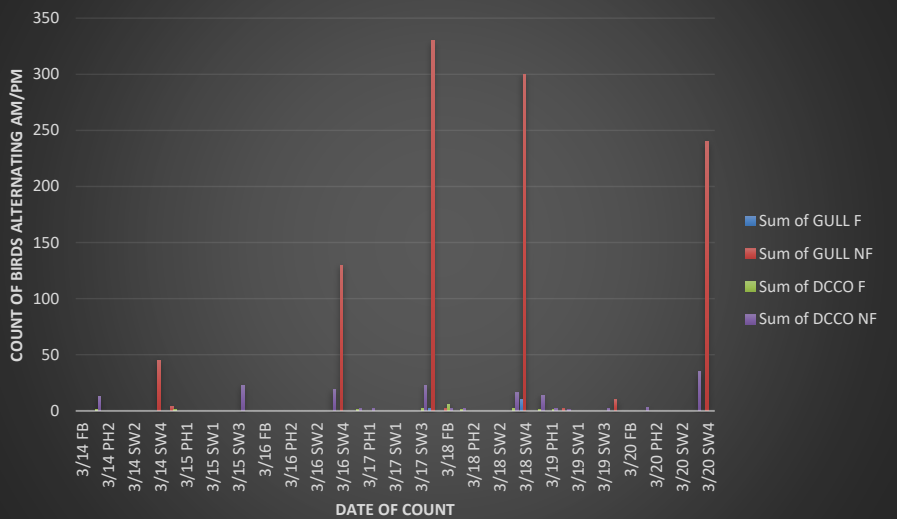
Orange lines = down or missing wires



Use complies with EM 385-1-1, ANSI

Agrilaser safe use locations for DCCO and GULL deterrence 2021.

Avian count TDA 3/14 to 3/20/21

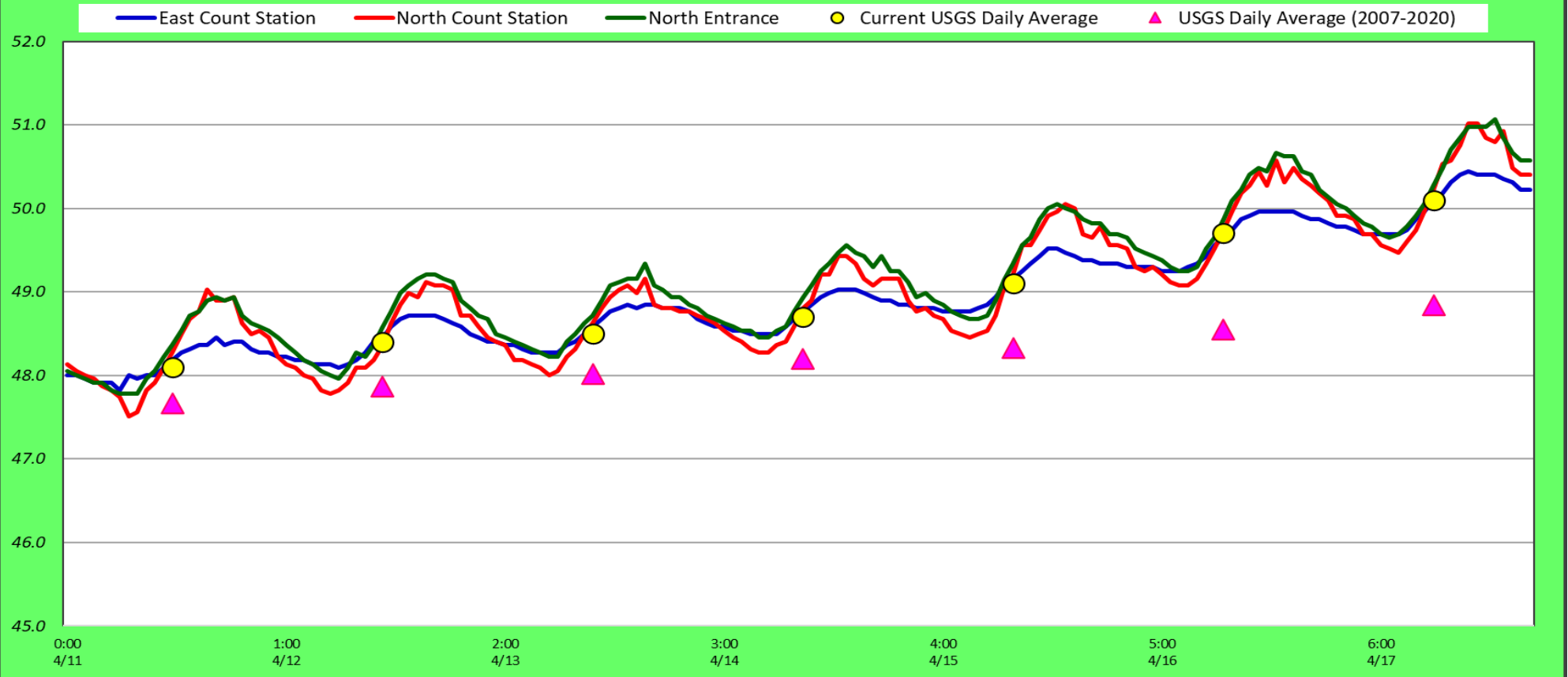


Bird Counts By Zone The Dalles Project, 4/11 to 4/17/2021



Compare current counts with a month ago.

Adult Fish Ladders-River Temperatures



Secchi:		°F	
4/11	5.0	Sun	48.1
4/12	5.0	Mon	48.4
4/13	5.0	Tue	48.5
4/14	5.0	Wed	48.7
4/15	5.0	Thurs	49.1
4/16	5.0	Fri	49.7
4/17	5.0	Sat	50.1
	5.0	AVG	48.9

**The Dalles Dam Daily Readings and Averages for
Temperatures, Secchi, Entrances, and Spill**

out of criteria

Date:	North Ladder		East Ladder											
	Differential	N1 Depth	East Entrance					West Entrance			South Entrance			
			Differential	E1 Depth	E2 Depth	E3 Depth	JP 6	Differential	W1	W2	W3	Differential	S1	S2
4/11	1.3	9.7	1.6	6.9	10.7	10.7	11.0	1.3	8.5	8.5	-2.3	1.5	8.5	8.5
	1.3	9.7	1.6	6.8	10.6	10.6	10.9	1.4	8.4	8.4	-2.4	1.4	8.7	8.7
4/12	1.4	9.7	1.7	7.0	10.9	10.8	11.1	1.3	8.4	8.5	-2.3	0.9	8.7	8.7
	1.3	9.8	1.4	7.2	11.0	11.0	11.3	1.4	8.5	8.5	-2.2	1.4	8.8	8.8
4/13	1.3	9.8	1.6	6.9	10.7	10.7	10.9	1.4	8.5	8.5	-2.5	1.4	8.8	8.8
	1.3	9.8	1.6	6.7	10.5	10.5	10.8	1.3	8.5	8.5	-2.5	1.4	8.7	8.7
4/14	1.3	9.7	1.5	6.5	10.2	10.2	10.6	1.4	8.4	8.4	-2.7	1.5	8.7	8.7
	1.3	9.8	1.7	6.4	10.2	10.2	10.5	1.5	8.4	8.4	-2.9	1.5	8.5	8.5
4/15	1.3	9.7	1.7	6.2	10.1	10.1	10.3	1.3	8.5	8.5	-3.3	1.4	8.6	8.6
	1.3	9.7	1.5	6.2	10.4	10.5	10.3	1.5	8.4	8.4	-3.1	1.4	8.4	8.4
4/16	1.3	9.8	1.6	5.7	10.5	10.5	9.8	1.3	8.4	8.4	-3.9	1.2	1.2	9.1
	1.3	9.7	1.5	5.6	10.5	10.5	9.7	1.2	8.5	8.5	-3.5	1.2	9.1	9.4
4/17	1.2	9.8	1.6	5.5	10.5	10.5	9.6	1.4	8.4	8.4	-3.4	1.2	8.9	9.1
	1.3	9.9	1.5	5.8	10.8	10.8	9.9	1.2	8.6	8.6	-3.7	1.2	9.0	9.2
AVG:	1.3	9.8	1.6	6.4	10.6	10.5	10.5	1.3	8.5	8.5	-3.0	1.3	8.2	8.8

Fishways are inspected once daily.

*S2 value 1.0' more than actual.



4/16/21 Gatewells contain numerous salmon smolt. Appear healthy.
Potential piscivorous predation observed.