

# The Dalles Dam Fishway Status Report

4/4/21

Inspection Period: 03/28-04/03

## THE DALLES DAM



US Army Corps  
of Engineers  
Portland District

The Dalles Project-Fisheries  
P.O. Box 564  
The Dalles, OR 97058-9998  
Phone: 541-506-3800

<b>The Dalles Dam</b>	<b>Inspections OOC</b>	<b>Criteria Limit</b>	<b>Total Number of Inspections:</b> 17	<b>Temperature:</b> 46.1 °F
			<b>Comments:</b> Fishways in criteria	<b>Weekly Ave. Secchi:</b> 5.0

### NORTH FISHWAY

Exit differential	0	≤ 0.5'	
Count station differential	0	≤ 0.3'	
Weir crest depth	0	1.0' ± 0.1'	
Entrance differential	0	1.0' - 2.0'	9.3
Entrance weir N1	0	depth (≥ 8')	1.3
Entrance weir N2	0	Closed	
PUD Intake differential	0	≤ 0.5'	

### EAST FISHWAY

Exit differential	0	≤ 0.5'	
Removable weirs 154-157	0	Per forebay	
Weir 158-159 differential	0	1.1' ± 0.1'	
Count station differential	0	≤ 0.3'	
153 Weir crest depth	0	1.0' ± 0.1'	
Junction pool weir JP6	0	> 7.0'	
East entrance differential	0	1.0' - 2.0'	1.5
Entrance weir E1	0	No criteria	
Entrance weir E2	0	depth (≥ 8')	12.3
Entrance weir E3	0	depth (≥ 8')	12.3
Collection channel velocity	0	1.5 - 4 fps	
Transportation channel velocity	0	1.5 - 4 fps	
North channel velocity	0	1.5 - 4 fps	
South channel velocity	0	1.5 - 4 fps	
West entrance differential	0	1.0' - 2.0'	1.4
Entrance weir W1	0	depth (≥ 8')	10.1
Entrance weir W2	0	depth (≥ 8')	10.1
Entrance weir W3	0	No criteria	
South entrance differential	0	1.0' - 2.0'	1.3
Entrance weir S1	0	depth (≥ 8')	10.6
Entrance weir S2	0	depth (≥ 8')	10.6

### JUVENILE PASSAGE

Sluiceway operation	8	Units 1, 18	Gates 1-2-3 opened at 1 and 18 to compensate for mechanical delay in opening gates MU8
Turbine trashrack drawdown	0	<1.5', biwkly	Debris load minimal due to low flow levels in river.
Spill volume/pattern	0	1 to 8	OFF
Turbine Unit Priority	0	per FPP	Operating according to FPP
Gatewells	0	Weekly	4/1/21 No mortality visible, debris low and differential within criteria.

## OTHER ISSUES:

### Current Unit Outages

T10 (MU19 & 20) FOOS through 10/27/2022 due to acetylene levels  
MU22 OOS 0630 3/1/2021 – 1700 5/20/2021 for Top Plate Cover Upgrades  
MU13 FOOS through 4/8/2021 for Turbine Bearing Cooler Repairs

### Maintenance

PUD intake rake out of service due to power track damage. Temporary repair near complete.  
Five of 6 east fishway collection channel dewatering pumps removed for repair/rehab. Work to resume this summer.  
Fishway automation replacement on hold. East exit, east and south entrances complete. West and north operating on old system.  
Spillway assessment (MRER); Spillgates 1- 9 rehab date estimate 2034. Includes replacement of spillbay 9 trunnion pin repair  
Calibrations 3/31/21 indicate significant deviations at south entrance gates with new automation. Working on corrections.

### Predators

The nesting osprey have returned. Very few Bald Eagle observations.  
Green laser use for piscivorous bird hazing testing continues. Effective moving cormorants off of BPA towers at dusk.  
Pikeminnow dam angling resumes next May. **All invasive bass/walleye by-catch release to continue per state requirement for past 5 years.**  
Planning PIT scanning in SW3. No tags recovered on Klickitat sandbar 3/19/21. Processing tag data recovered. Avian predator investigation continues.

### Research/Construction/Contractors

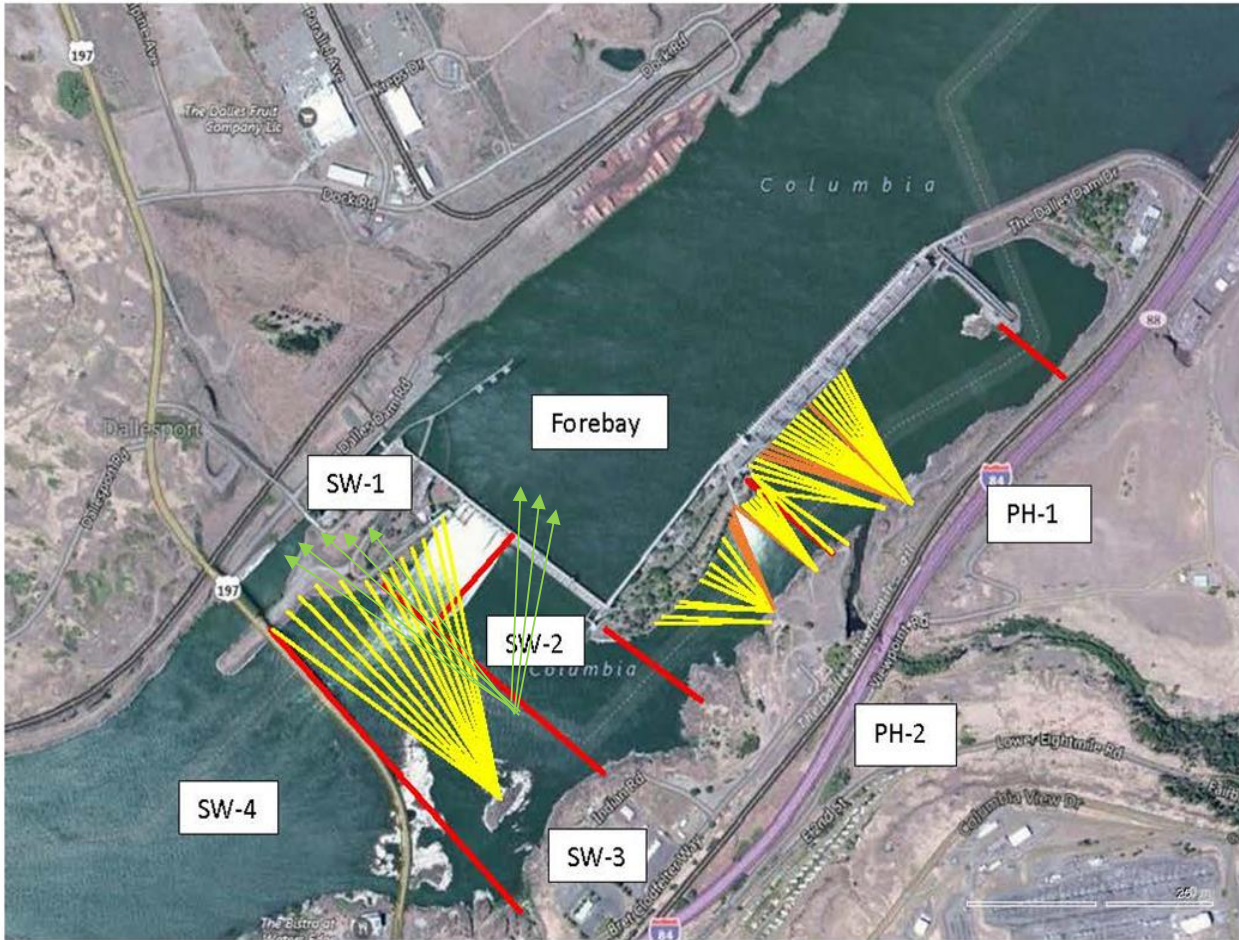
4 Peaks fish count resumed 4/1.  
PSMFC smolt monitoring resumes 4/6. PSMFC precautionarily will monitor trap through night to prevent/decrease fry mortality as #'s have increased in past few years  
AWS intake trashrack -site visit 03/31 investigate solution for debris plugging issue. Passive debris shield preferred.  
PITAGS north and east fishladder data collection at count stations continues.  
Fish unit rehab - Phase 1A on hold. Planning operation with AWS backup water supply during construction.

### Fishway Operations

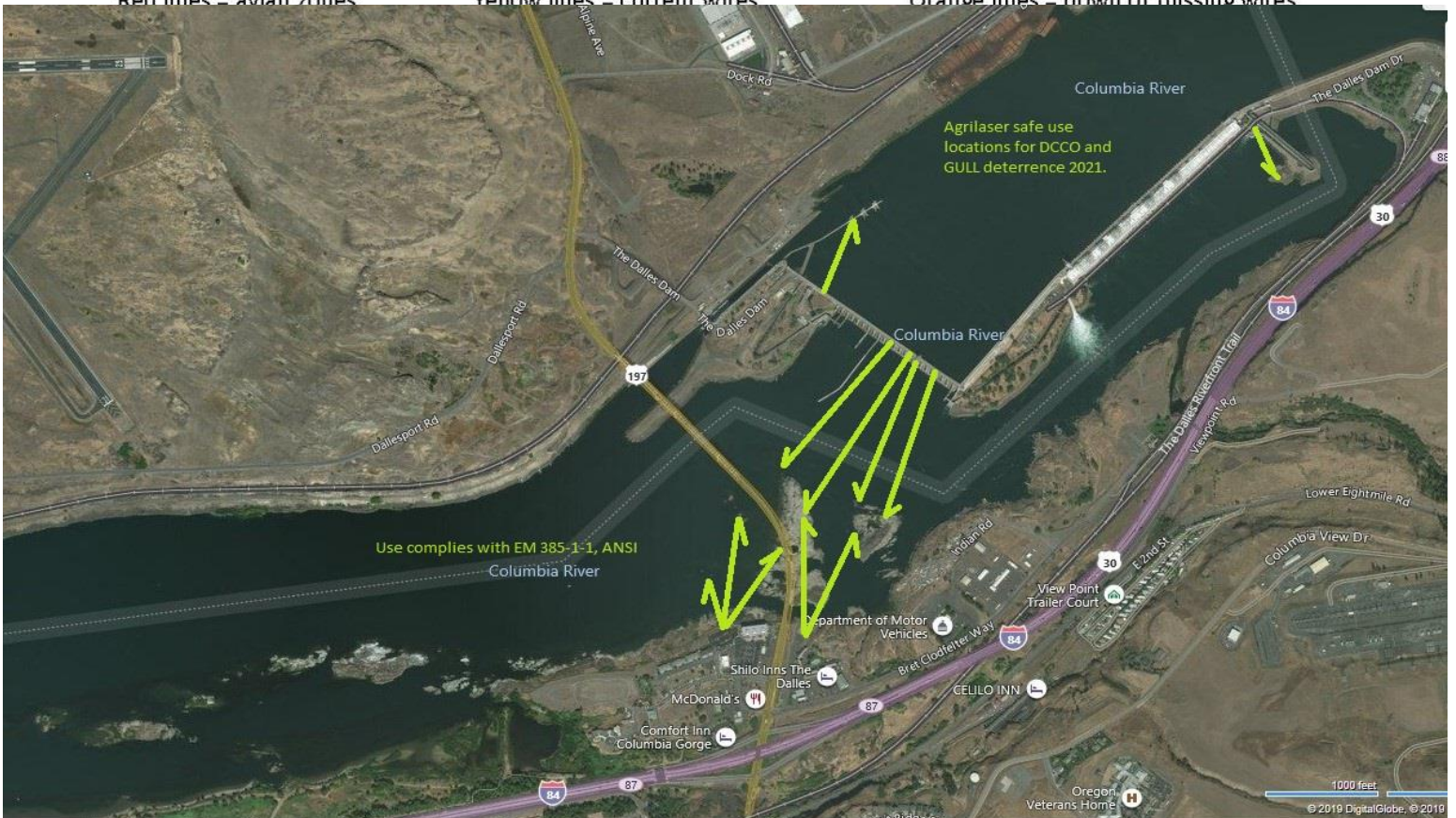
East and north fishladders in full operation per Fish Passage Plan.  
Ice Trash sluiceway in operation w/ sluice gates open-all MU1 &

Approved by: Ron Twiner, Operation Project Manager, The Dalles Dam

New Avian Lines and laser deterrent zones



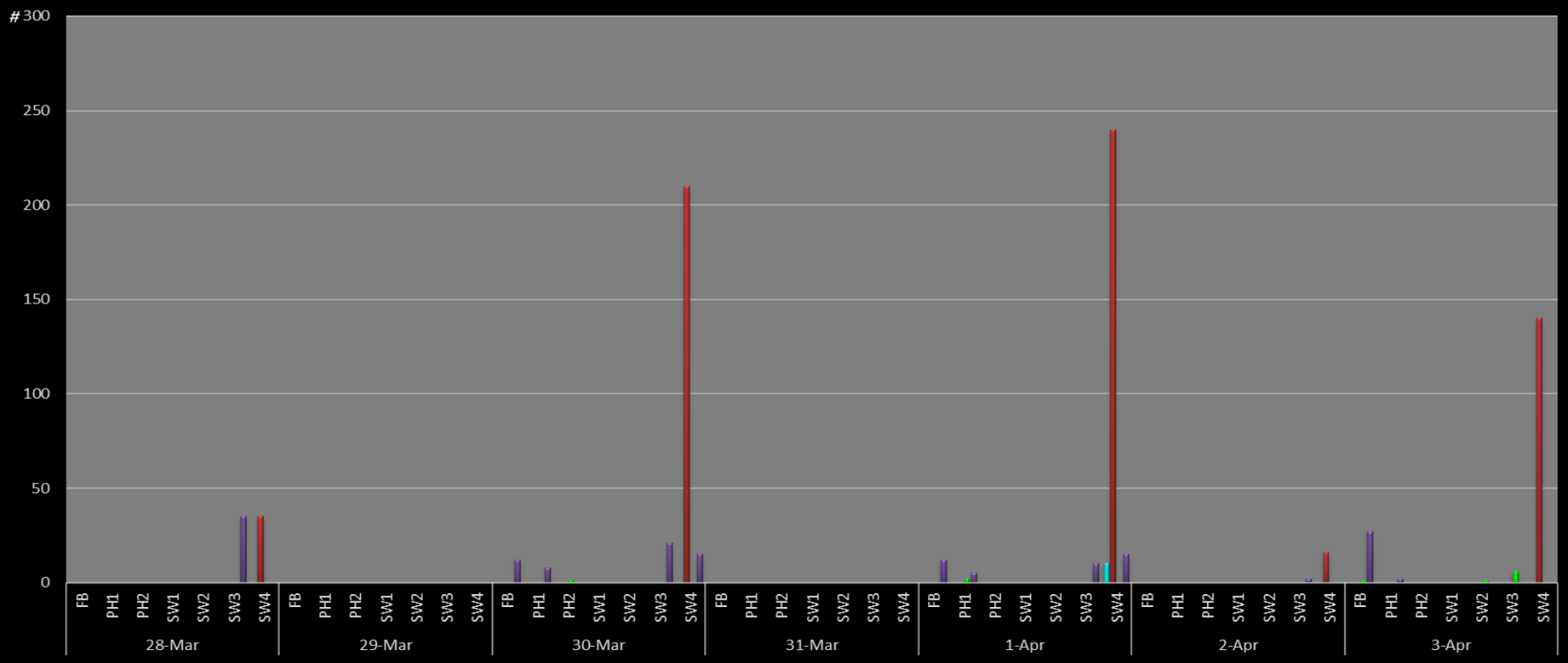
Red lines = avian zones      Yellow lines = current wires      Orange lines = down or missing wires



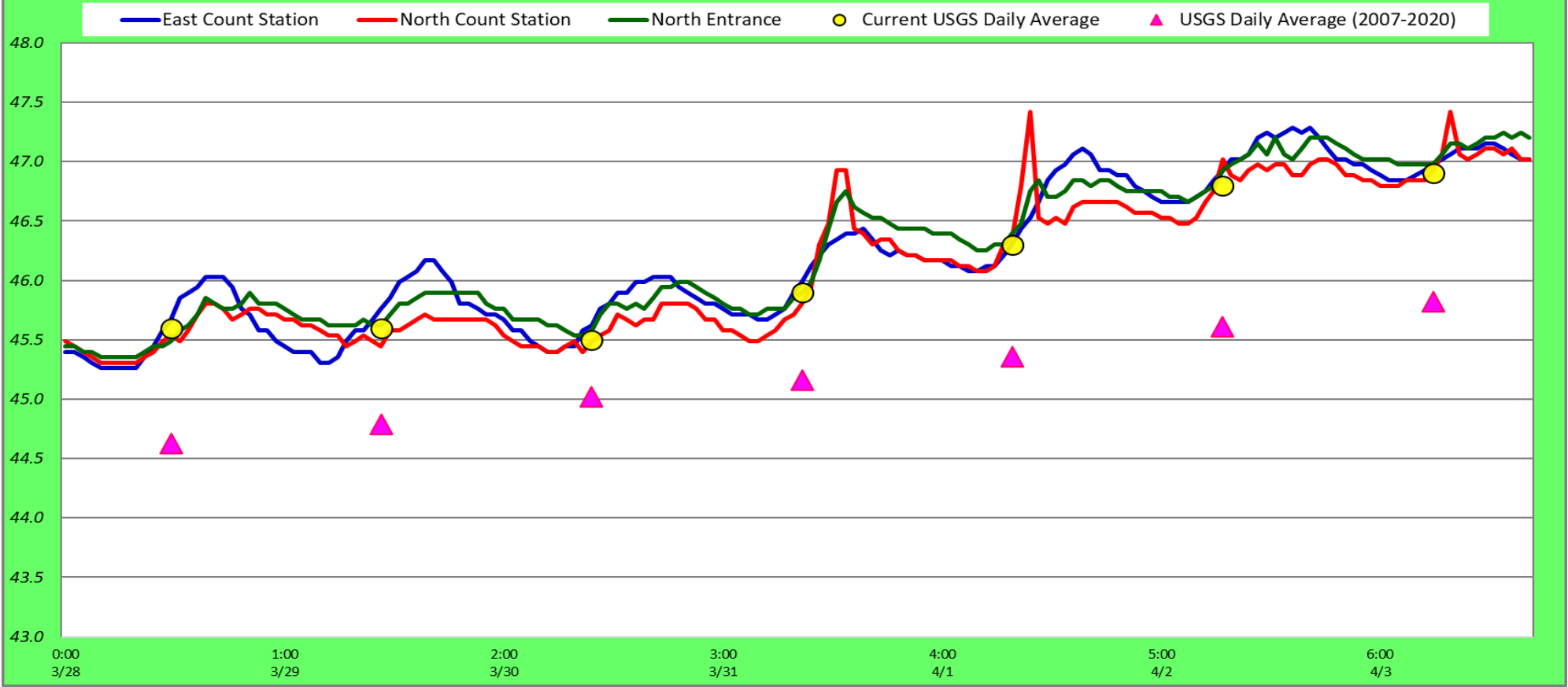
### Gull & Cormorant Activity

■ Sum of GULL F    
 ■ Sum of GULL NF    
 ■ Sum of DCCO F    
 ■ Sum of DCCO NF

F=Forage  
NF=Idle



### Adult Fish Ladders-River Temperatures



Secchi:		°F
3/28	5.0	Sun 45.6
3/29	5.0	Mon 45.6
3/30	5.0	Tue 45.5
3/31	5.0	Wed 45.9
4/1	5.0	Thurs 46.3
4/2	5.0	Fri 46.8
4/3	5.0	Sat 46.9
	5.0	AVG 46.1

The Dalles Dam Daily Readings and Averages for  
Temperatures, Secchi, Entrances, and Spill

out of criteria

Date:	North Ladder		East Ladder											
			East Entrance					West Entrance			South Entrance			
	Differential	N1 Depth	Differential	E1 Depth	E2 Depth	E3 Depth	JP 6	Differential	W1	W2	W3	Differential	S1	S2
3/28	1.4	9.2	1.6	5.9	12.0	12.1	10.0	1.4	10.2	10.2	-3.2	1.2	11.1	11.0
	1.3	9.2	1.6	5.0	11.7	11.7	9.1	1.3	10.0	10.0	-3.5	1.2	10.6	11.5
3/29	1.3	9.3	1.4	6.4	12.7	12.7	10.8	1.5	10.0	10.0	-2.7	1.2	11.2	11.2
	1.3	9.2	1.6	5.8	11.8	11.8	9.8	1.3	10.0	10.0	-3.6	1.3	10.5	10.3
3/30	1.4	9.3	1.3	6.9	12.7	12.8	10.9	1.6	9.9	9.9	-2.8	1.1	11.6	11.6
	1.4	9.2	1.5	6.0	12.2	12.3	10.1	1.4	10.3	10.2	-3.3	1.3	10.5	10.5
3/31			1.4	6.2	11.8	11.8	10.3	1.4	10.3	10.3	-2.9			
	1.4	9.3	1.6	6.2	12.1	12.1	10.2	1.3	10.3	10.3	-2.8	1.3	10.7	10.6
4/1	1.3	9.3	1.7	5.9	11.9	11.9	10.0	1.4	9.9	9.9	-3.5	1.5	9.8	9.8
								1.4	10.1	10.1	-2.4			
4/2	1.3	9.5	1.4	6.6	12.8	12.8	10.7	1.4	10.0	10.0	-2.9	1.3	10.7	10.6
	1.3	9.2	1.6	5.7	12.1	12.1	9.8	1.5	10.0	10.0	-3.6	1.4	10.0	10.1
4/3	1.4	9.4	1.3	7.6	13.2	13.2	11.6	1.6	10.1	10.1	-2.0	1.3	11.2	11.2
	1.3	9.4	1.6	6.4	12.1	12.1	10.4	1.5	10.0	10.0	-3.1	1.4	10.2	10.2
4/3	1.3	9.4	1.5	6.3	12.5	12.5	10.4	1.5	10.1	10.1	-3.1	1.5	10.0	10.0
	1.3	9.4	1.5	6.5	12.6	12.7	10.5	1.5	10.0	10.0	-3.0	1.4	10.2	10.2
<b>AVG:</b>	<b>1.3</b>	<b>9.3</b>	<b>1.5</b>	<b>6.2</b>	<b>12.3</b>	<b>12.3</b>	<b>10.3</b>	<b>1.4</b>	<b>10.1</b>	<b>10.1</b>	<b>-3.0</b>	<b>1.3</b>	<b>10.6</b>	<b>10.6</b>

Fishways are inspected twice daily.



Birds just like this place