

# The Dalles Dam Fishway Status Report

01/31/2021

Inspection Period: 01/24-01/30

## THE DALLES DAM



The Dalles Project-Fisheries  
 P.O. Box 564  
 The Dalles, OR 97058-9998  
 Phone: 541-506-3800

<b>The Dalles Dam</b>	Inspections OOC	Criteria Limit	Total Number of Inspections:	7	Temperature:	40.8 °F
			Comments:		Weekly Ave. Secchi:	4.4

### NORTH FISHWAY (Dewatered 1/26)

Exit differential	0	≤ 0.5'	
Count station differential	0	≤ 0.3'	
Weir crest depth	0	1.0' ± 0.1'	
Entrance differential	0	1.0' - 2.0'	1.3
Entrance weir N1	0	depth (≥ 8')	9.6
Entrance weir N2	0	Closed	
PUD Intake differential	4	≤ 0.5'	

### EAST FISHWAY (Return operation 1/25)

Exit differential	0	≤ 0.5'	
Removable weirs 154-157	0	Per forebay	156 lagging behind forebay level Adjusting automation
Weir 158-159 differential	0	1.1' ± 0.1'	Adjusting automation
Count station differential	0	≤ 0.3'	
153 Weir crest depth	1	1.3' ± 0.1'	Adjusting automation
Junction pool weir JP6	0	> 7.0'	
East entrance differential	0	1.0' - 2.0'	1 fish unit operation
Entrance weir E1	0	No criteria	
Entrance weir E2	0	depth (≥ 8')	
Entrance weir E3	0	depth (≥ 8')	
Collection channel velocity	NA	1.5 - 4 fps	
Transportation channel velocity	NA	1.5 - 4 fps	
North channel velocity	NA	1.5 - 4 fps	
South channel velocity	NA	1.5 - 4 fps	
West entrance differential	2	1.0' - 2.0'	0.9'
Entrance weir W1	4	depth (≥ 8')	
Entrance weir W2	4	depth (≥ 8')	
Entrance weir W3	0	No criteria	Closed
South entrance differential	NA	1.0' - 2.0'	No indication
Entrance weir S1	NA	depth (≥ 8')	No indication
Entrance weir S2	closed	depth (≥ 8')	1 fish unit operation

### JUVENILE PASSAGE

Sluiceway operation	0	Units 1, 3, 18	
Turbine trashrack drawdown	0	<1.5', biwkly	
Spill volume/pattern	0	1 to 8	
Turbine Unit Priority	0	per FPP	
Gatewells	0	Weekly	

## OTHER ISSUES:

### Current Unit Outages

Line1 OOS. T1 replacement through 2/3/21

MU1 OOS through 2/5/21 annual

MU2 OOS through 2/28/21 overhaul

T10 (MU19 and 20) OOS 10/28/21 acetylene levels

SS01 OOS through 2/1/21 overhaul

FU1 OOS through 2/25/21 overhaul

### Maintenance

Repaired wind damaged debris guard for north fishladder exit. Installation Feb17.

PUD intake rake out of service due to power track damage. Exploring repair options. Temporary repair planned for 2021 season.

Five of 6 east fishway collection channel dewatering pumps removed for repair/rehab. Work to resume FY21.

Fishway automation (SCADA) continues. Exit in operation. East entrance near complete. West and south on hold due to budget constraints.

Spillway assessment (MRER); Spillgates 1- 9 rehab date estimate 2034. Includes replacement of spillbay 9 trunnion pin repair

Troubleshooting new east fishway automation issues. Affecting criteria operation.

North fishway difuser grating and weirs inspected in dry. No problems found.

No calibrations this week.

### Predators

Moderate gull numbers. Refer to avian tab for bird numbers. Bald eagles have arrived to feed on shad fall back.

Green laser use for piscivorous bird hazing testing continues. Effective on roosting birds during low light.

Investigating falconry for forebay tower cormorants.

Pikeminnow dam angling resumes next May. **All invasive bass/walleye by-catch release to continue per state requirement.**

Recovered 52 PIT tag numbers with ground scanners in SW4, known gull and pelican resting areas.

### Research/Construction/Contractors

AWS intake trashrack - EDR funded for FY21 to investigate solution for debris plugging issue.

PITAGS north and east fishladder data collection at north count stations continues. East antenna annual maintenance this month during dewatering.

Fish unit rehab - Phase 1A on hold. Planning operation with AWS backup water supply during construction.

### Fishway Operations

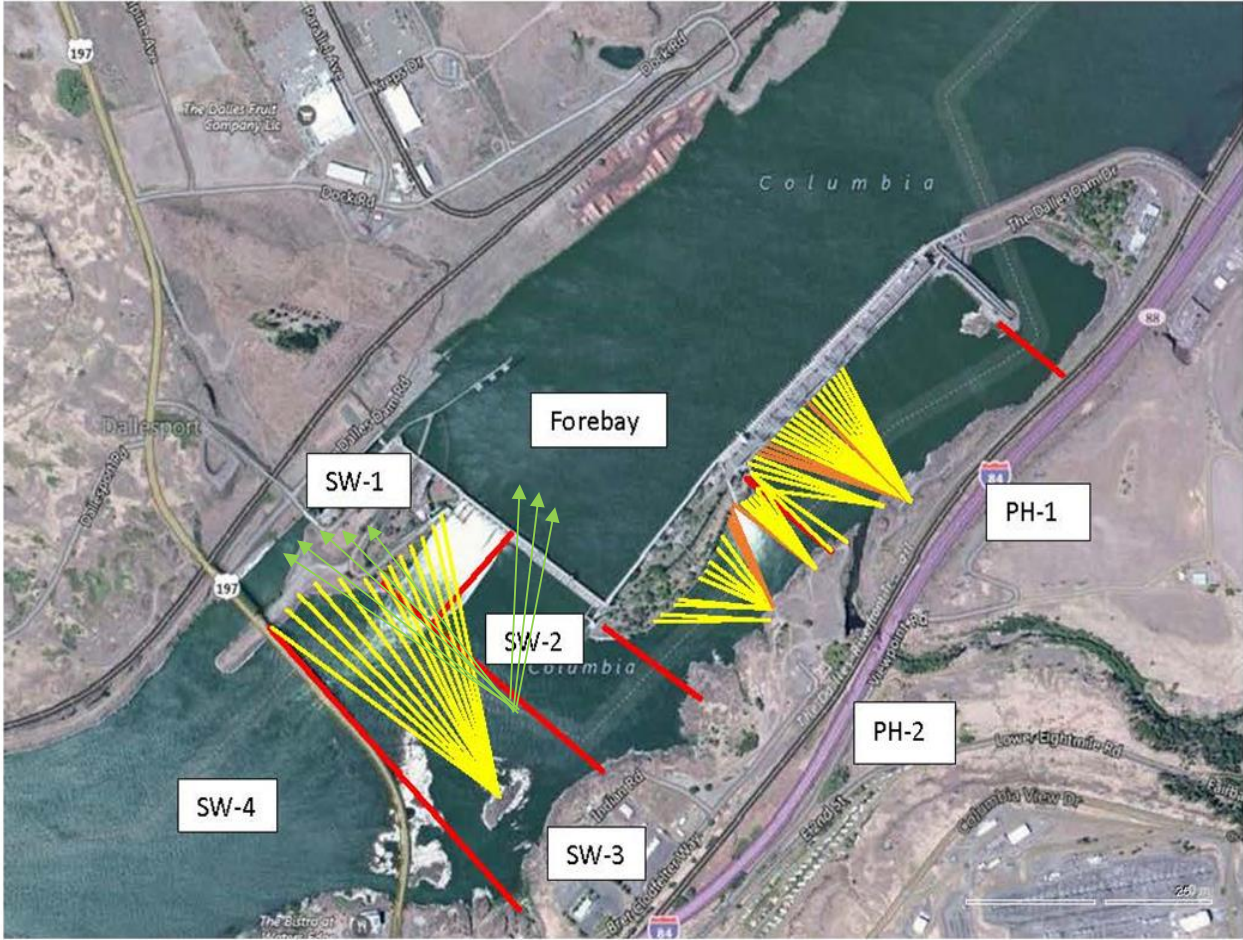
North fishway in full operation to 1/26

East ladder return 1/20. Single fish unit operation 1/25

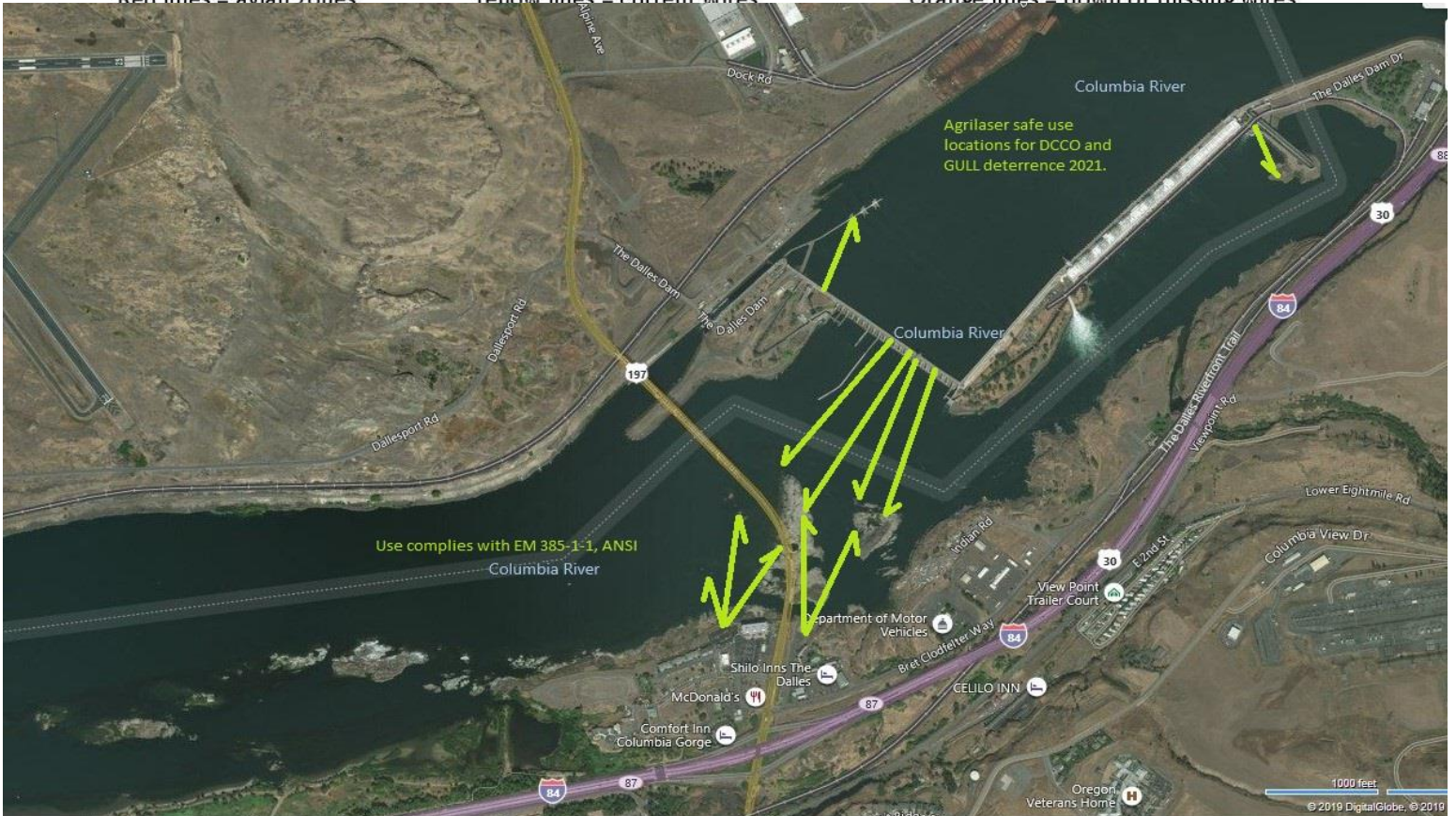
Approved by: Ron Twiner, Operation Project Scanning for PITs.



New Avian Lines and laser deterrent zones

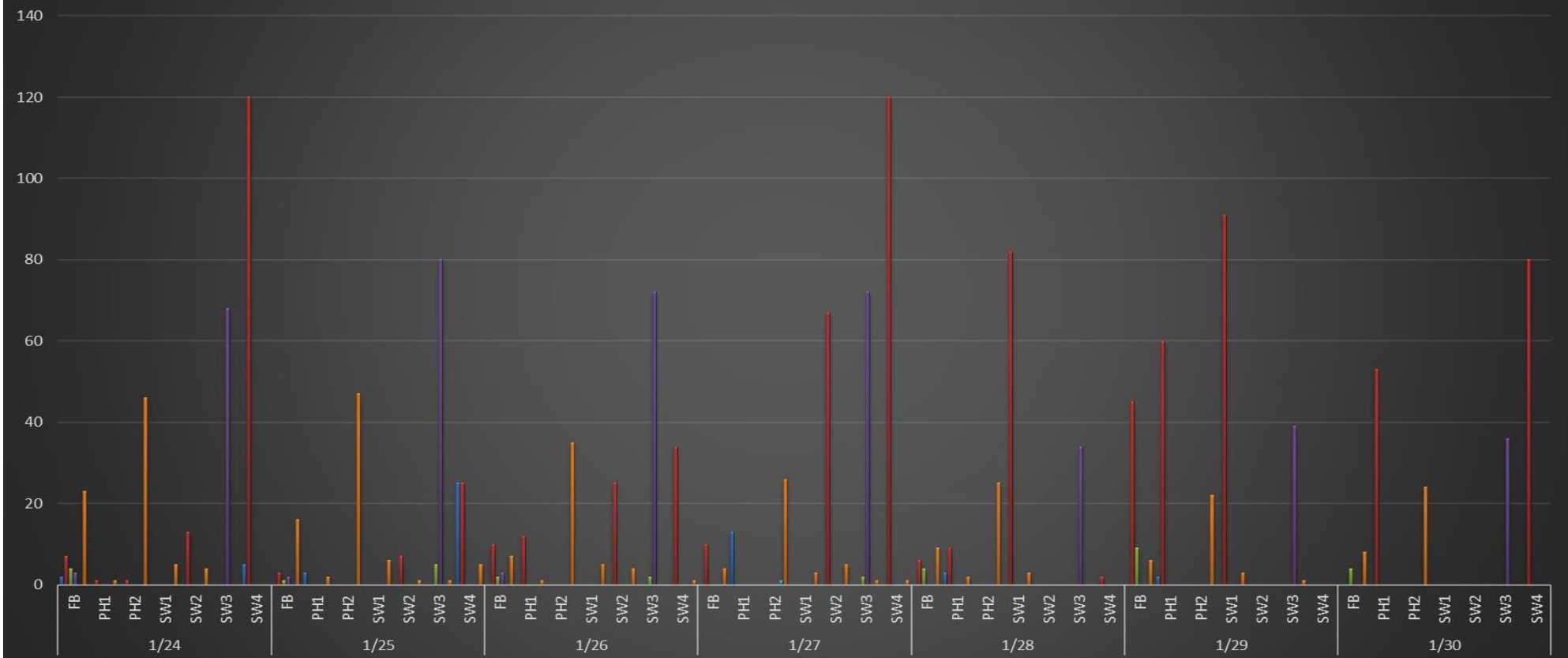


Red lines = avian zones      Yellow lines = current wires      Orange lines = down or missing wires

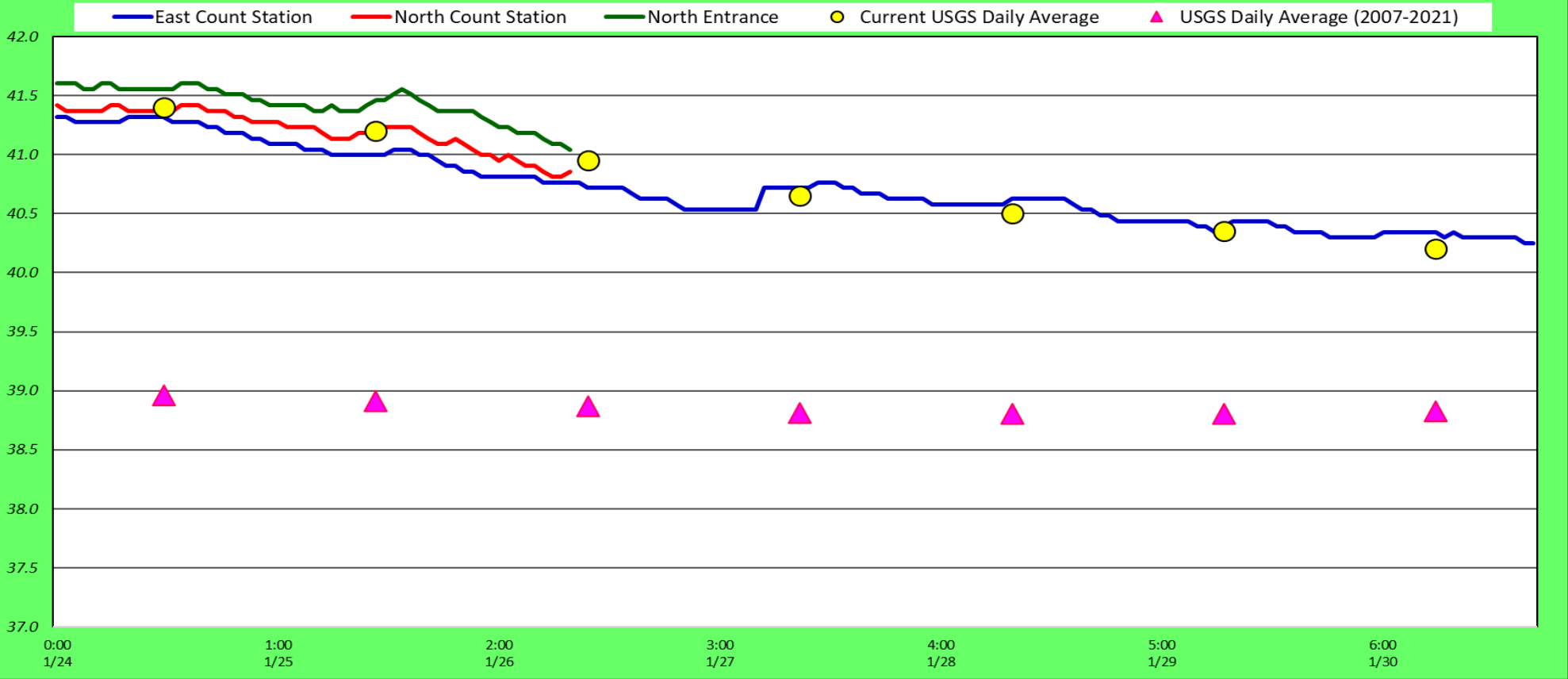


### Gull Cormorant and Eagle foraging activity

▴ Sum of GULL F   
 ▾ Sum of GULL NF   
 ▴ Sum of DCCO F   
 ▾ Sum of DCCO NF   
 ▴ Sum of BAEA F   
 ▾ Sum of BAEA NF



### Adult Fish Ladders-River Temperatures





Secchi:		°F
4.0	Sun	41.4
4.0	Mon	41.2
4.0	Tue	41.0
4.0	Wed	40.7
4.5	Thurs	40.5
5.0	Fri	40.4
5.0	Sat	40.2
4.4	AVG	40.8

[USGS Jan](#)

The Dalles Dam Daily Readings and Averages for  
Temperatures, Secchi, Entrances, and Spill

SCADA INSPECTION

out of criteria

Date:	North Ladder		East Ladder											
	Differential	N1 Depth	East Entrance					West Entrance			South Entrance			
			Differential	E1 Depth	E2 Depth	E3 Depth	JP 6	Differential	W1	W2	W3	Differential	S1	S2
1/24	1.3	9.6												
1/25	1.3	9.6												
1/26	dewatered							1.3	3.1	2.5	0.6			
1/27								0.9	7.4	7.5	-0.7			
1/28								0.9	7.2	7.2	-0.9			
1/29								1.0	7.7	7.7	-0.4			
1/30								1.0	8.1	8.1	0.0			
<b>AVG:</b>	<b>1.3</b>	<b>9.6</b>						<b>1.0</b>	<b>6.7</b>	<b>6.6</b>	<b>-0.3</b>			

Fishways are inspected once daily.



New sluiceway cover to prevent spray and icing