

# The Dalles Dam Fishway Status Report

01/24/2021

Inspection Period: 01/17-01/23

## THE DALLES DAM



US Army Corps  
of Engineers  
Portland District

The Dalles Project-Fisheries  
P.O. Box 564  
The Dalles, OR 97058-9998  
Phone: 541-506-3800

<b>The Dalles Dam</b>	<b>Inspections OOC</b>	<b>Criteria Limit</b>	<b>Total Number of Inspections:</b> 7	<b>Temperature:</b> 42.0 °F
			<b>Comments:</b> north functional, east ladder flow no attraction.	<b>Weekly Ave. Secchi:</b> 4.4

### NORTH FISHWAY

Exit differential	0	≤ 0.5'	
Count station differential	0	≤ 0.3'	
Weir crest depth	0	1.0' ± 0.1'	
Entrance differential	0	1.0' - 2.0'	1.3
Entrance weir N1	0	depth (≥ 8')	9.6
Entrance weir N2	0	Closed	
PUD Intake differential	7	≤ 0.5'	TDM unable to remove significant floating weeds buildup. North FB index data unreliable.

### EAST FISHWAY

	Fishway closed		
North channel velocity	0	1.5 - 4 fps	2.69 fps, 1/14/2021
	Fishway closed		

### JUVENILE PASSAGE

Sluicgate operation	0	Units 1, 3, 18	MU8 OOS and MU1-2 OOS Endgate closed, Ingates 1-18 open per FPP.
Turbine trashrack drawdown	0	<1.5', biwkly	11/26/2020 checked, all in criteria.
Spill volume/pattern	0	1 to 8	Spill closed 9/1/2020.
Turbine Unit Priority	0	per FPP	All available MUs running according to FPP.
Gatewells	0	Weekly	1/16/2021 fish check, Some adult shad mortality seen. 50 plus adult shad in MU3-1 well.

## OTHER ISSUES:

### Current Unit Outages

Line 1, MU1, & MU2 OOS for T1 replacement MU2 Overhaul and MU1 Annual through 2/28/2021  
T10 (MU19 & 20) FOOS through 10/28/2021/1/17/2021  
SSO1 OOS for Overhaul and DC Governor oil Pump Install 11/2/2020 - 1/14/2021  
FU2 OOS 12/1/2020 – 1/21/2021 for Annual & TA Vault Demo  
T6 OOS 12/14/2020 - 12/21/2020 for GSU Re-Work, Oil Leak Repairs

### Maintenance

Repaired wind damaged debris guard for north fishladder exit. Installation Feb17.  
PUD intake rake out of service due to power track damage. Exploring repair options. Temporary repair planned for 2021 season.  
Five of 6 east fishway collection channel dewatering pumps removed for repair/rehab. Work to resume FY21.  
Fishway automation (SCADA) continues. Exit in operation. East entrance near complete. West and south on hold due to budget constraints.  
Spillway assessment (MRER); Spillgate 9 trunnion pin included.  
No calibrations this week.  
Diffuser grating panel missing at east entrance. Dive repair completed.

### Predators

Moderate gull numbers. Refer to avian tab for bird numbers. Bald eagles have arrived to feed on shad fall back.  
Green laser use for piscivorous bird hazing testing continues. Effective on roosting birds during low light.  
Investigating falconry for forebay tower cormorants.  
Pikeminnow dam angling resumes next May. **All invasive bass/walleye by-catch release to continue per state requirement.**

### Research/Construction/Contractors

AWS intake trashrack - EDR funded for FY21 to investigate solution for debris plugging issue.  
PITAGS north and east fishladder data collection at north count stations continues. East antenna annual maintenance this month during dewatering.  
Fish unit rehab - Phase 1A on hold. Planning operation with AWS backup water supply during construction.  
Recovered 52 PIT tag numbers with ground scanners in SW4, known gull and pelican resting areas.

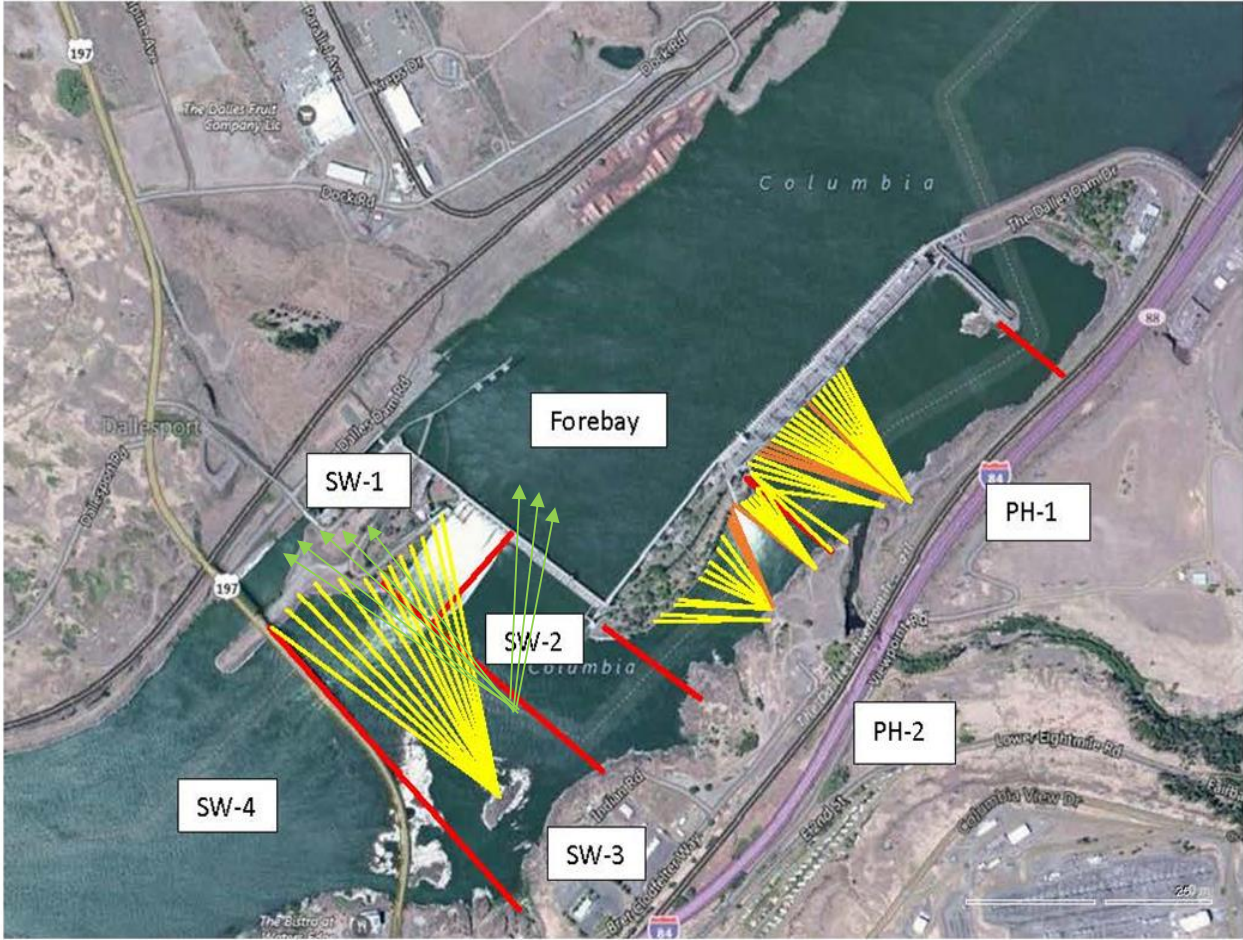
### Fishway Operations

North fish ladder in full operation-East ladder exit flow with no FU attraction flow 1/20/21.  
lower north ladder 2.69 fps, 1/14/2020

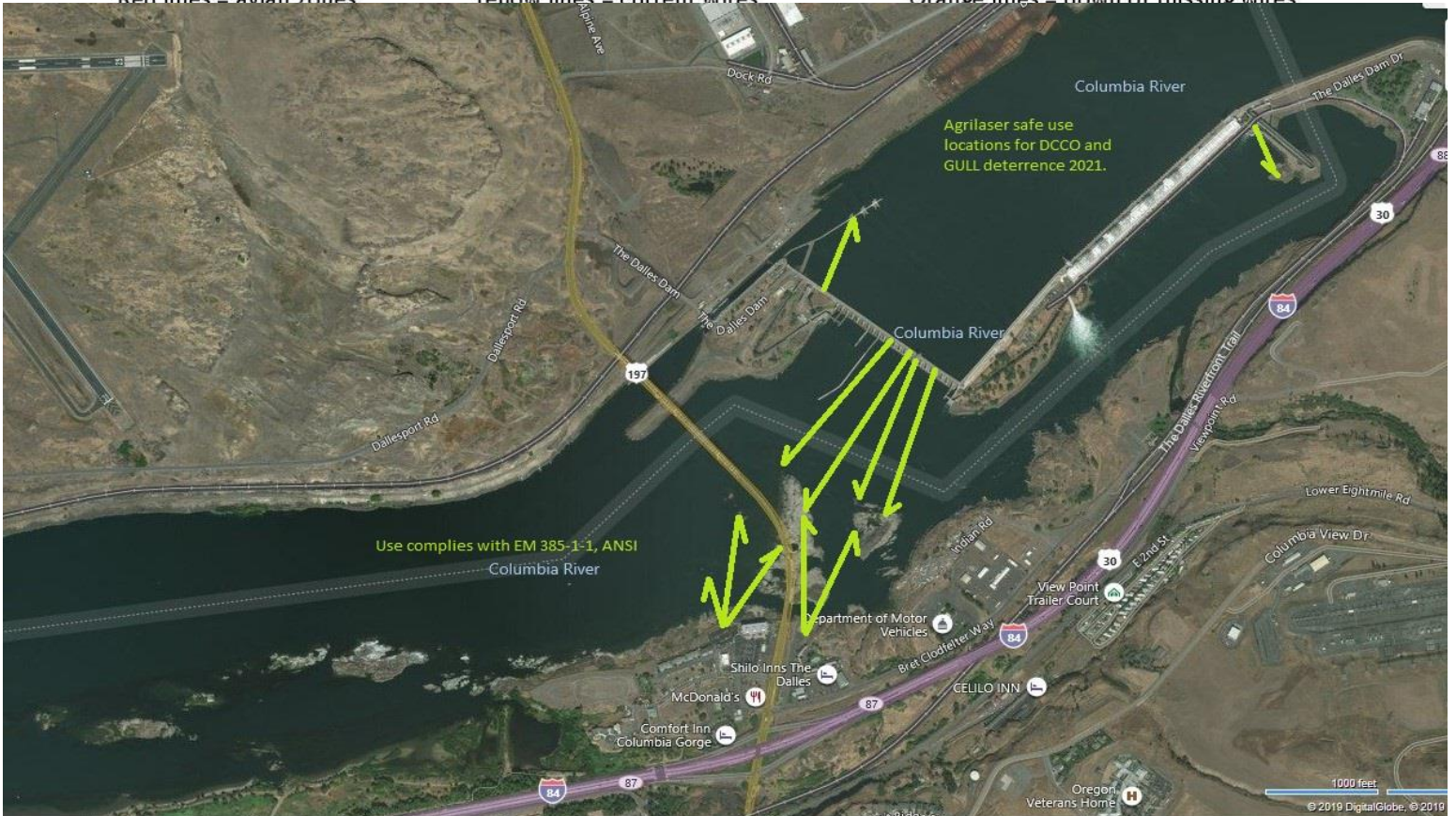
Approved by: Ron Twiner, Operation Project Scanning for PITs.



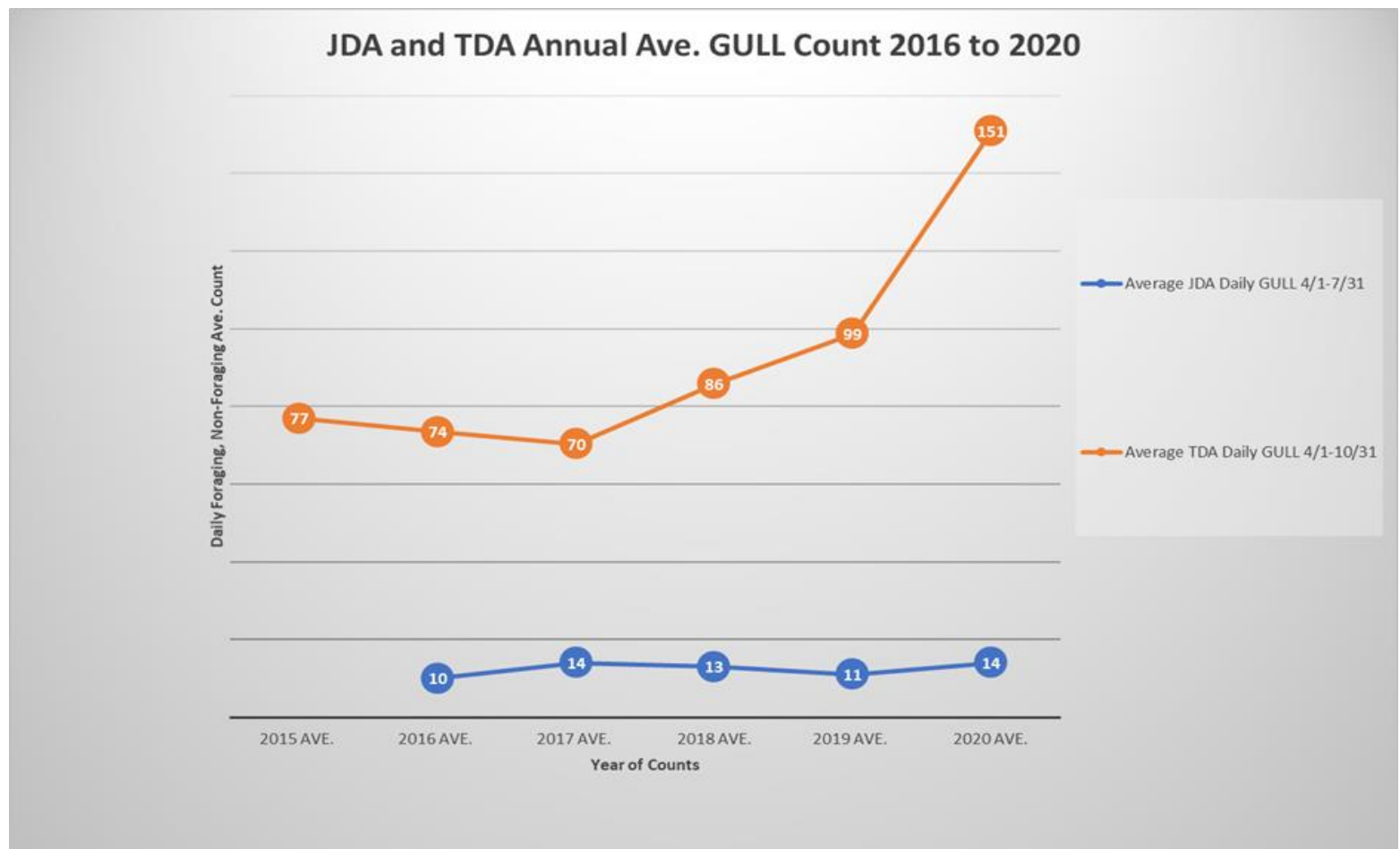
New Avian Lines and laser deterrent zones



Red lines = avian zones      Yellow lines = current wires      Orange lines = down or missing wires

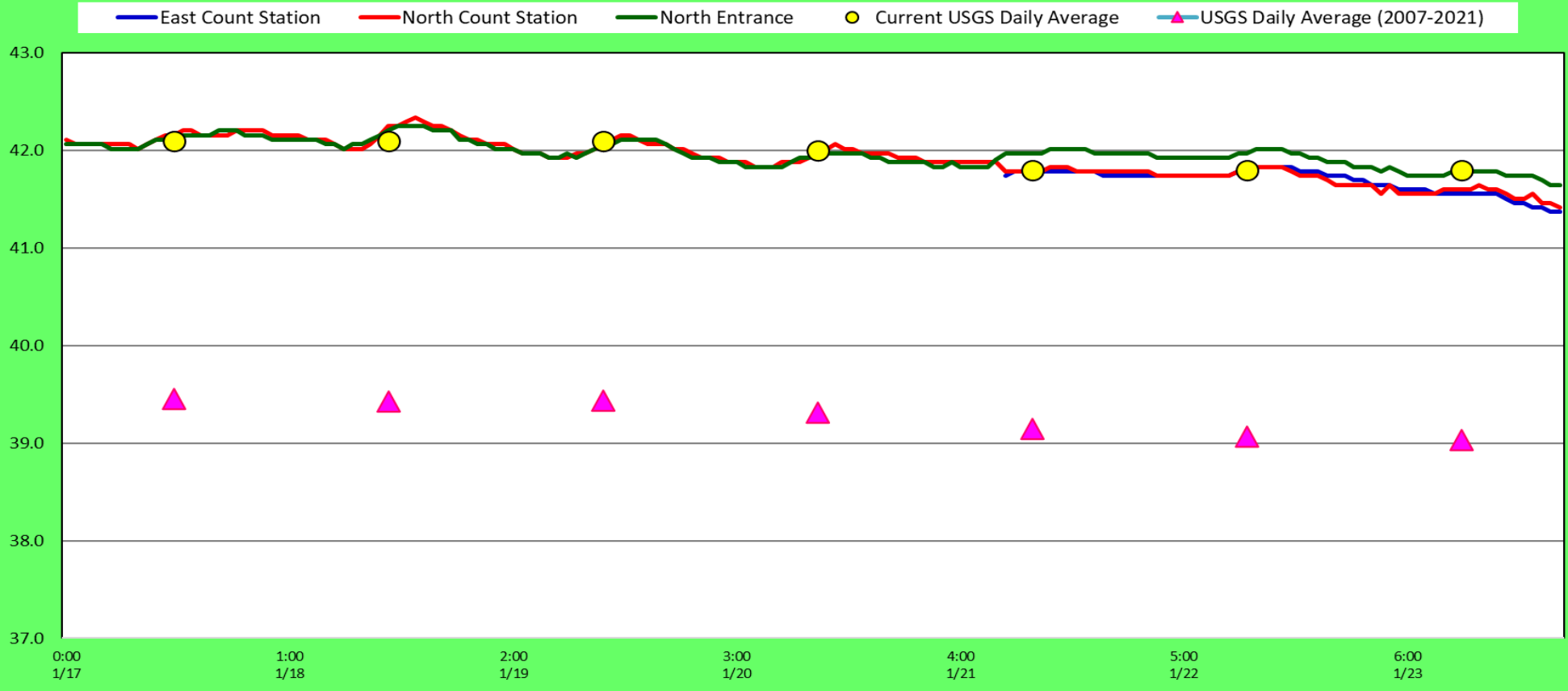


Date	Observer	Time	ZONE	GULL F	GULL NF	DCCO F	DCCO NF	TERN F	TERN NF	Grebe F	Grebe NF	AWPE F	AWPE NF	OtherF	OtherNF	Total	comments		
1/17	JED	AM	FB	0	5	0	2	0	0	0	0	0	0	0	0	5	12	BAEA	
1/17			PH1	0	0	0	0	0	0	0	0	0	0	0	0	0	0	0	sunny, 52F 15mph W
1/17			PH2	0	2	0	0	0	0	0	0	0	0	0	0	0	28	30	BAEA
1/17			SW1	4	60	0	0	0	0	0	0	0	0	0	0	0	0	64	
1/17			SW2	0	0	0	0	0	0	0	0	0	0	0	0	0	5	5	BAEA
1/17			SW3	0	0	1	65	0	0	0	0	0	0	0	0	0	0	66	
1/17			SW4	0	120	0	0	0	0	0	0	0	0	0	0	0	2	122	BAEA
1/18	JED	PM	FB	0	0	0	0	0	0	0	0	0	0	0	0	0	0		
1/18			PH1	0	0	0	0	0	0	0	0	0	0	0	0	0	0		
1/18			PH2	0	0	0	0	0	0	0	0	0	0	0	0	0	0	0	
1/18			SW1	0	0	0	0	0	0	0	0	0	0	0	0	0	0	0	sunny, 54F, calm
1/18			SW2	0	0	0	0	0	0	0	0	0	0	0	0	0	0	0	
1/18			SW3	0	0	0	75	0	0	0	0	0	0	0	0	0	0	75	
1/18			SW4	5	75	0	0	0	0	0	0	0	0	0	0	0	2	82	BAEA
1/23	JED	AM	FB	0	5	4	0	0	0	0	0	0	0	0	0	12	21	BAEA	
1/23			PH1	1	0	0	0	0	0	0	0	0	0	0	0	1	2	BAEA	
1/23			PH2	0	1	0	0	0	0	0	0	0	0	0	0	26	27	BAEA	
1/23			SW1	0	0	0	0	0	0	0	0	0	0	0	0	7	7	BAEA	
1/23			SW2	0	137	0	0	0	0	0	0	0	0	0	3	5	145	BAEA F, GBHE NF	
1/23			SW3	0	25	4	75	0	0	0	0	0	0	0	0	1	0	0	GBHE
1/23			SW4	0	20	0	0	0	0	0	0	0	0	0	0	1	21	BAEA	





### Adult Fish Ladders-River Temperature



Secchi:		°F
4.0	Sun	42.1
4.0	Mon	42.1
4.0	Tue	42.1
4.0	Wed	42.0
4.5	Thurs	41.8
5.0	Fri	41.8
5.0	Sat	41.8
4.4	AVG	42.0

[USGS Jan](#)

The Dalles Dam Daily Readings and Averages for  
Temperatures, Secchi, Entrances, and Spill

SCADA INSPECTION

out of criteria

Date:	North Ladder		East Ladder											
	Differential	N1 Depth	East Entrance					West Entrance			South Entrance			
			Differential	E1 Depth	E2 Depth	E3 Depth	JP 6	Differential	W1	W2	W3	Differential	S1	S2
1/17	1.3	9.6												
1/18	1.3	9.6												
1/19	1.3	9.6												
1/20	1.2	9.6												
1/21	1.3	9.5												
1/22	1.3	9.6												
1/23	1.3	9.6												
<b>AVG:</b>	<b>1.3</b>	<b>9.6</b>												

East Ladder dewatered

*Fishways are inspected once daily.*

