

The Dalles Dam Fishway Status Report

01/17/2021

Inspection Period: 01/10-01/16

THE DALLES DAM



The Dalles Project-Fisheries
 P.O. Box 564
 The Dalles, OR 97058-9998
 Phone: 541-506-3800

The Dalles Dam	Inspections OOC	Criteria Limit	Total Number of Inspections:	7	Temperature:	42.1 °F
			Comments: fishways functional		Weekly Average Secchi:	4.6

NORTH FISHWAY

Exit differential	0	≤ 0.5'	
Count station differential	0	≤ 0.3'	
Weir crest depth	0	1.0' ± 0.1'	
Entrance differential	0	1.0' - 2.0'	1.3
Entrance weir N1	0	depth (≥ 8')	9.6
Entrance weir N2	0	Closed	
PUD Intake differential	7	≤ 0.5'	TDM unable to remove significant floating weeds buildup. North FB index data unreliable.

EAST FISHWAY

	Fishway closed			
North channel velocity		0	1.5 - 4 fps	2.69 fps, 1/14/2021
		Fishway closed		

JUVENILE PASSAGE

Sluicgate operation	0	Units 1, 3, 18	MU8 OOS and MU1-2 OOS
Turbine trashrack drawdown	0	<1.5', biwkly	11/26/2020 checked, all in criteria.
Spill volume/pattern	0	1 to 8	Spill closed 9/1/2020.
Turbine Unit Priority	0	per FPP	All available MUs running according to FPP.
Gatewells	0	Weekly	1/16/2021 fish check, Some adult shad mortality seen. 50 plus adult shad in MU3-1 well.

OTHER ISSUES:

Current Unit Outages

- Line 1, MU1, & MU2 OOS for T1 replacement MU2 Overhaul and MU1 Annual through 2/28/2021
 - T10 (MU19 & 20) FOOS through 10/28/2020/1/17/2021
 - SSO1 OOS for Overhaul and DC Governor oil Pump Install 0630 11/2/2020 - 1700 1/14/2021
- Inspection Period: 01/10-01/16
- FU2 OOS 0001 12/1/2020 – 1700 1/21/2021 for Annual & TA Vault Demo
 - T6 OOS 12/14/2020 - 1700 12/21/2020 for GSU Re-Work, Oil Leak Repairs

Maintenance

- Repairing wind damaged debris guard for north fishladder exit.
- PUD intake rake out of service due to power track damage. Exploring repair options. Temporary repair planned for 2021 season.
- Five of 6 east fishway collection channel dewatering pumps removed for repair/rehab. Work to resume FY21.
- East and north fishway automation (SCADA) near complete for east exit and east entrance. Commission next week.
- Spillway assessment (MRER); Spillgate 9 trunnion pin included.
- Calibration checks on North fishway entrance and exits 12/25/2020, all within criteria.
- Diffuser grating panel missing at east entrance. Dive repair completed.

Predators

- Moderate/high gull numbers. Refer to avian graph tab for bird numbers. Bald eagles have arrived to feed on shad fall back.
- Green laser use for piscivorous bird hazing testing continues. Effective on roosting birds during low light.
- Investigating faclonery for forebay tower cormorants.

Pikeminnow dam angling resumes next May. **All invasive bass/walleye by-catch release to continue per state requirement.**

Research/Construction/Contractors

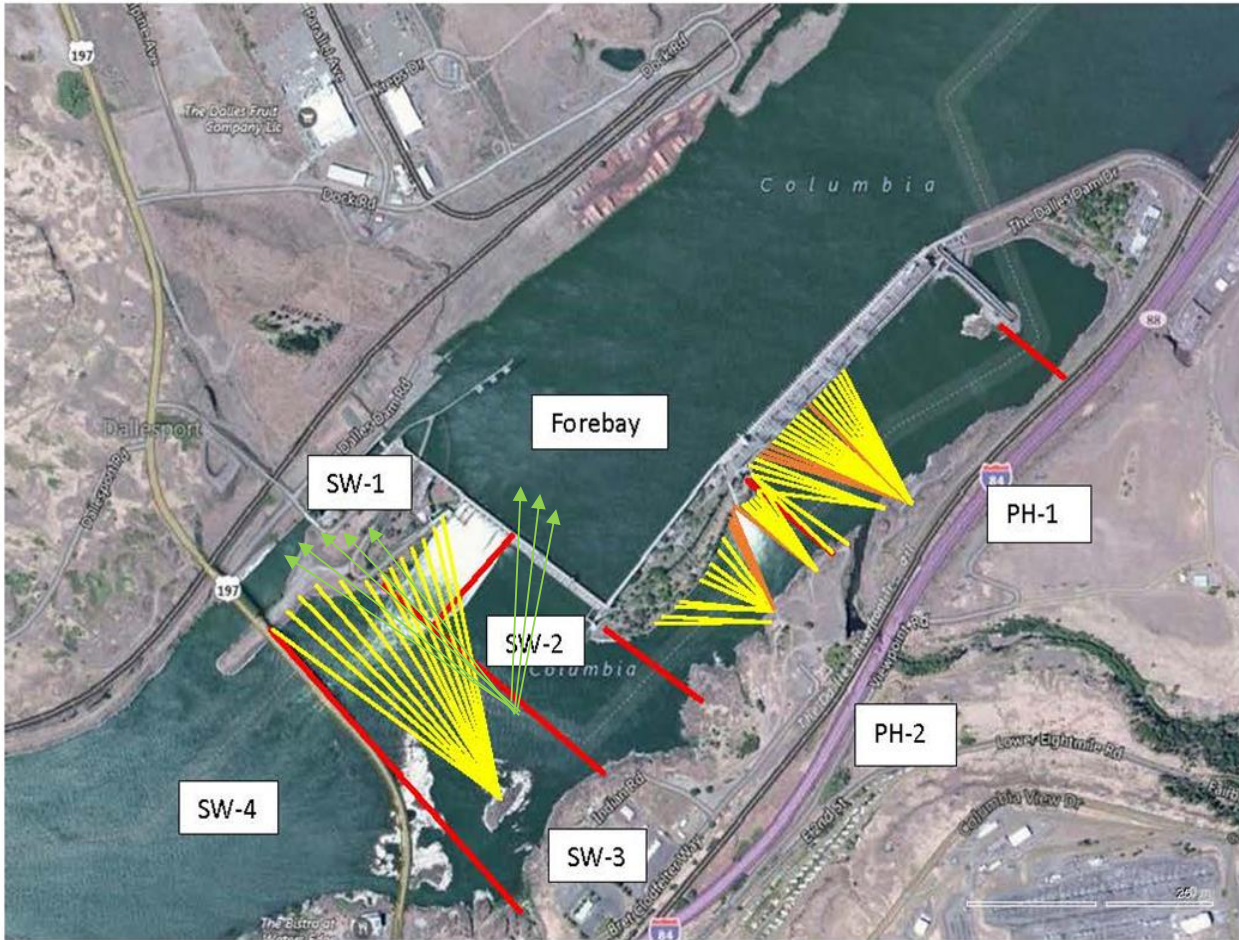
- AWS intake trashrack - EDR funded for FY21 to investigate solution for debris plugging issue.
- PITAGS north and east fishladder data collection at north count stations continues. East antenna annual maintenance this month during dewatering.
- Fish unit rehab - Phase 1A on hold. Planning operation with AWS backup water supply during construction.
- Recovered 46 PIT tag numbers with ground scanners on mid channel island west of SW4, known gull and pelican resting area.

Fishway Operations

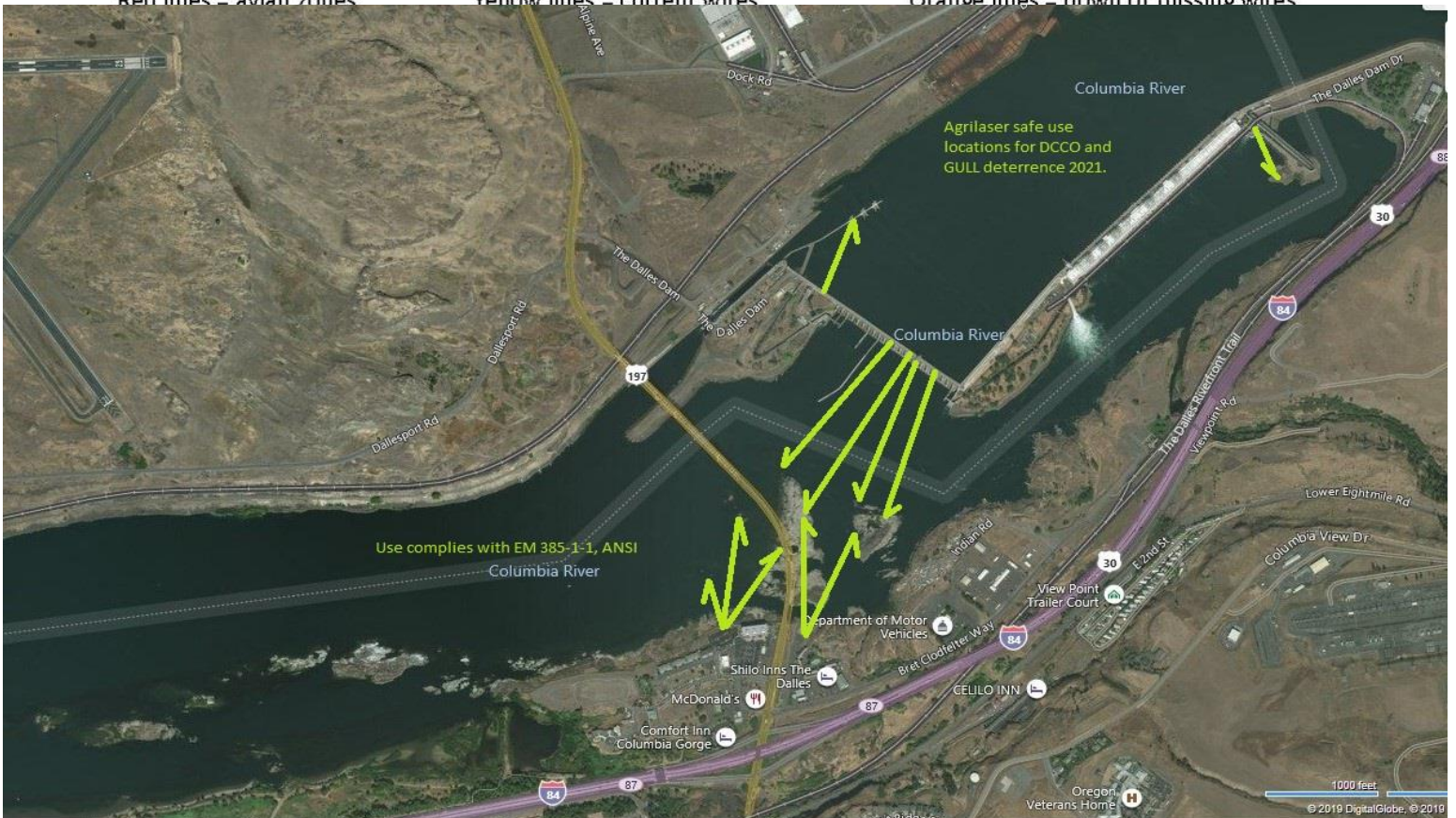
- North fish ladder in full operation-East ladder dewatered 12/2
- lower north ladder 2.69 fps, 1/14/2020

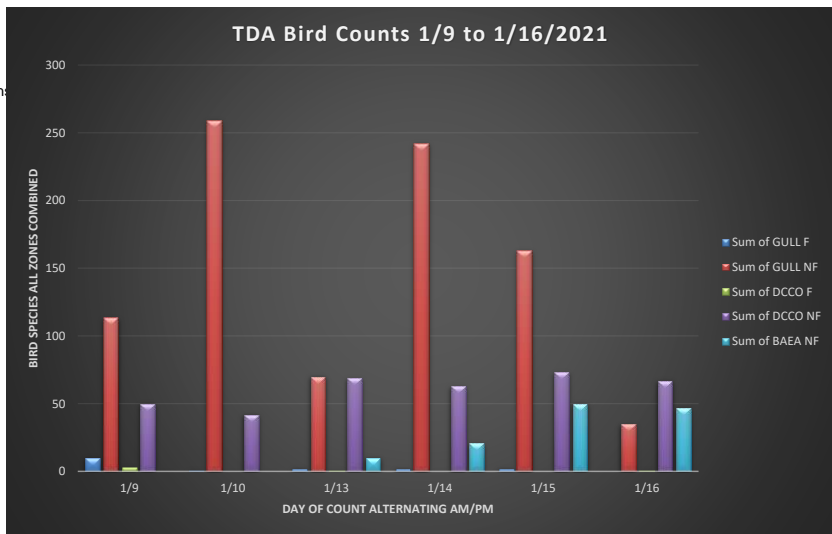
Approved by: Ron Twiner, Operation Project Scanning for PITs.

New Avian Lines and laser deterrent zones



Red lines = avian zones Yellow lines = current wires Orange lines = down or missing wires





2.69 fps, 1/14/2020
Scanning for PITs.

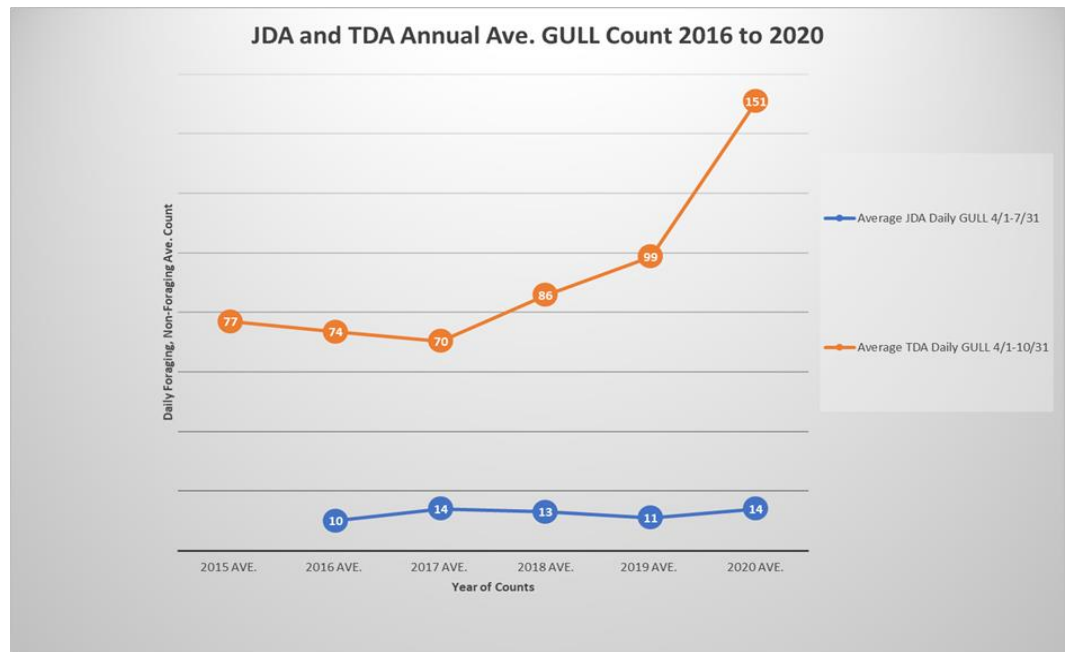
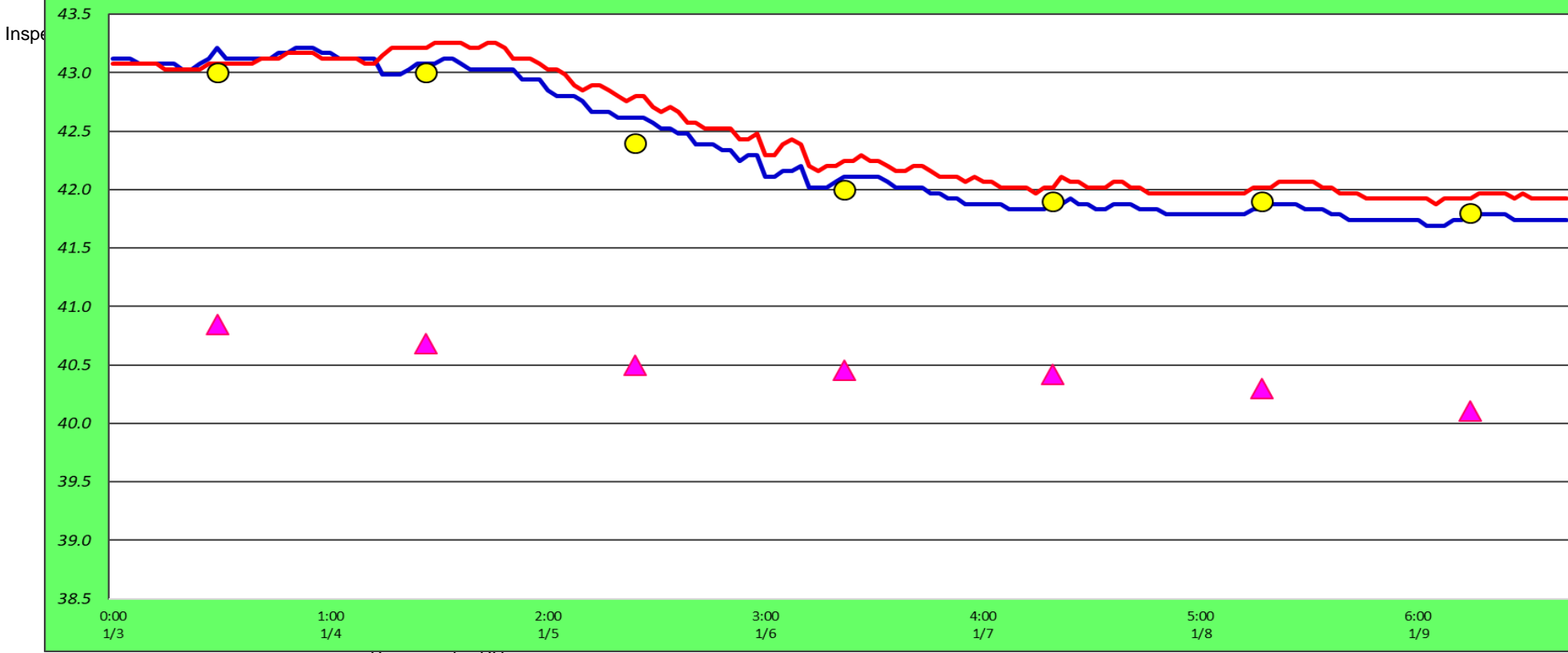


Chart Title

North Count Station North Entrance Current USGS Daily Average USGS Daily Average (2007-2021)



Scanning for PITs.

Secchi:		°F
5.0	Sun	41.9
5.0	Mon	42.0
5.0	Tue	42.0
5.0	Wed	42.1
4.0	Thurs	42.3
4.0	Fri	42.2
4.0	Sat	42.1
4.6	AVG	42.1

[USGS Jan](#)

The Dalles Dam Daily Readings and Averages for
Temperatures, Secchi, Entrances, and Spill

SCADA INSPECTION

out of criteria

Date:	North Ladder		East Ladder											
	Differential	N1 Depth	East Entrance					West Entrance			South Entrance			
			Differential	E1 Depth	E2 Depth	E3 Depth	JP 6	Differential	W1	W2	W3	Differential	S1	S2
1/10	1.4	9.4												
1/11	1.4	9.4												
1/12	1.3	9.8												
1/13	1.3	10.0												
1/14	1.3	9.9												
1/15	1.2	9.4												
1/16	1.4	9.5												
AVG:	1.3	9.6												

East Ladder dewatered

Fishways are inspected once daily.



Cordie caught actually working. Scanning for PITs.



North PUD intake with high debris loading. Rake system out of commission.