

FISHWAY STATUS REPORT

Date: 8/26/2017
 Inspection Period: 8/20/2017 thru 8/26/2017



US Army Corps
 of Engineers
 Portland District

JOHN DAY DAM

JD/WC Project-Fisheries
 P.O. Box 823
 Rufus, Oregon 97050
 Phone: 541-506-7860

All JD Fishways are inspected twice per day during fish passage season, Mar. 1 - Nov. 30.
 Frequent monitoring of the PLC displays in SMF Fisheries Office as necessary.

John Day Dam	Inspections	Criteria	Total Number of Inspections:	14	Temperature:	72 F
	Out of Criteria	Limit			Secchi:	6.0 Ft.
NORTH FISHWAY			In service with all 6 AWS pumps available since 1/19/17.			
Exit differential	0	≤ 0.5'				
Exit Control weirs	0	High setting	High setting is normal for JDN			
Count station differential	0	≤ 0.3'				
Weir crest depth (DS gauge)	0	1.0' ± 0.1'				
Entrance differential	0	1.0' - 2.0'	AVG	1.6		
SOUTH FISHWAY			In service since 3/3/17 with 2 out of 3 AWS turbines available.			
Exit differential	0	≤ 0.5'				
Exit Control weirs	0	Mid setting	Mid setting is normal for JDS			
Count station differential	0	≤ 0.3'				
Weir crest depth (US gauge)	0	1.0' ± 0.1'				
South entrance differential	0	1.0' - 2.0'	AVG	1.4		
Entrance weir SE1	0	depth (≥ 8')	AVG	8.8		
Collection channel velocity	0	1.5 - 4 fps	AVG	2.42		
N. Entrance PH(Bay 19)differential	0	1.0' - 2.0'	AVG	1.6		
Entrance weir NE1	0	depth (≥ 8')	AVG	8.4		
Entrance weir NE2	0	depth (≥ 8')	AVG	8.3		
JUVENILE PASSAGE			JBS in service since 3/30/17.			
Forebay/bypass conduit differential	0	4.0' - 5.0'	AVG	4.6		
Submersible traveling screens	0	visual inspect				
Turbine trashrack drawdown	0	<1.5', wkly	Trashrack Crane in service since 6/01.			
Vert barrier screen drawdown	0	<1.5', wkly				
Spill volume	0	FOP	Fish spill continues since per FOP. Bay 20 reduced to 3 stops since 5/23 (see JDA08MFR)			
Spill pattern	0	TSW per FPP	All Spillway bays in service since 5/22.			
Turbine Unit Priority	0	per FPP				
Turbine 1% Efficiency	0	per FPP				

SMOLT MONITORING FACILITY

Operation:

SMF in a limited, twice a week, 6 hrs sampling due to river temperatures above 70F since 7/23/17.

Maintenance:

STS annual maintenance all complete in mid-May.

SMF SCADA update/mods' investigation by JD Electrical/ Portland District Engineers is underway.

Research: None

Birds :

USDA gull hazing from a boat downstream of JD Tailrace BRZ ended on 7/30/17.

see the Avian Numbers tab.

6 Tower-to-Tower, 6 spillway (1 failed 23 August,) 4 Navlock and 4 PH lines are missing out of 125 grid's total. They will be reinstalled for the 2018 passage season.

Operations:

Spillbay #20 continues reduced to 3 stops after two adult chinook salmon were found stranded on the adjacent tailrace deck on 5/30 (see JDA08MFR.)

Trashrack Crane in service since 6/01/17.

JD South Fishway in service with two AWS Turbines and meeting all FPP criteria since 3/3/17.

JD North Fishway in service with all 6 AWS pumps available and meeting all FPP criteria since 1/19/17.

MU Gatewell Drawdowns: weekly or more frequently as necessary.

Maintenance:

Trashrack Crane was repaired/ returned to service on 6/01.

JD STS crane's emergency repairs were all completed in February with the minor glitches/ adjustments continuing. The crane remains in a risky operational condition until it's replaced with a brand new machine. However, the \$ 5 million for its replacement is not yet available.

Calibration: All gauges/ sensors are within the criteria of 0.3' .

Research:

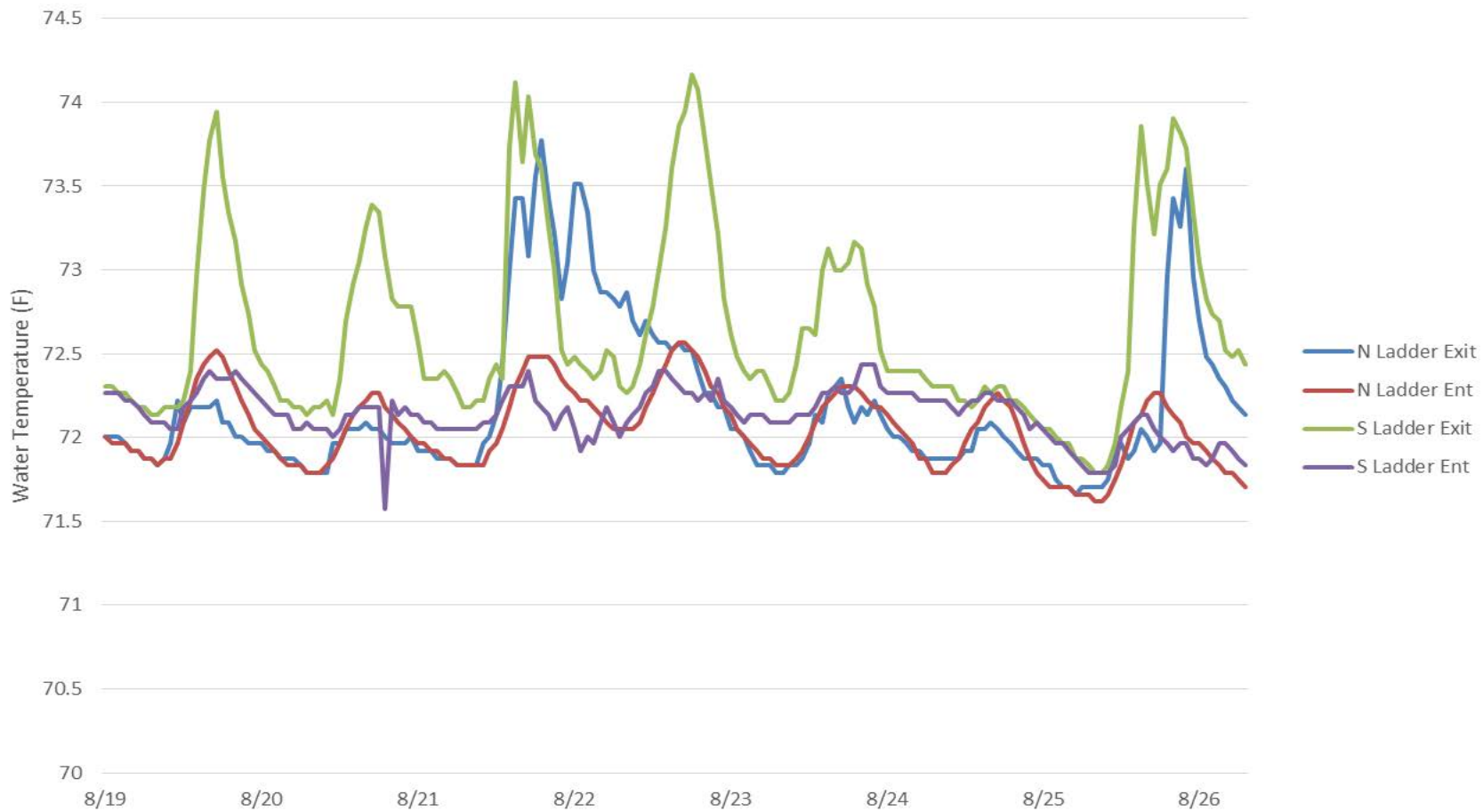
All tribal lamprey trapping successfully ended on 8/18/17.

WDFW angling crew continues the pikeminnow removal from JD PH tailrace (fishing from PH deck) since 5/15. **Great catches with 3,326 NPM total by 8/27.**

Adult PIT antennas' installation at JD South Fishway finished on 23 Feb. Both ladders' antennas in service with temporary power sources. Phase 2 support contract to install building/ office spaces plus electrical and Gorgenet hookups underway since 7 August.

MOYNAHAN, KEVIN, PATRICK, 1393959157
E-Signed by MOYNAHAN, KEVIN, PATRICK, 1393959157
VERIFY authenticity with ApproveIt

John Day Dam Fishladder Water Temperatures (8/19/17 - 8/26/17)



JDA Collection Channel Velocity

Date 26-Aug-17

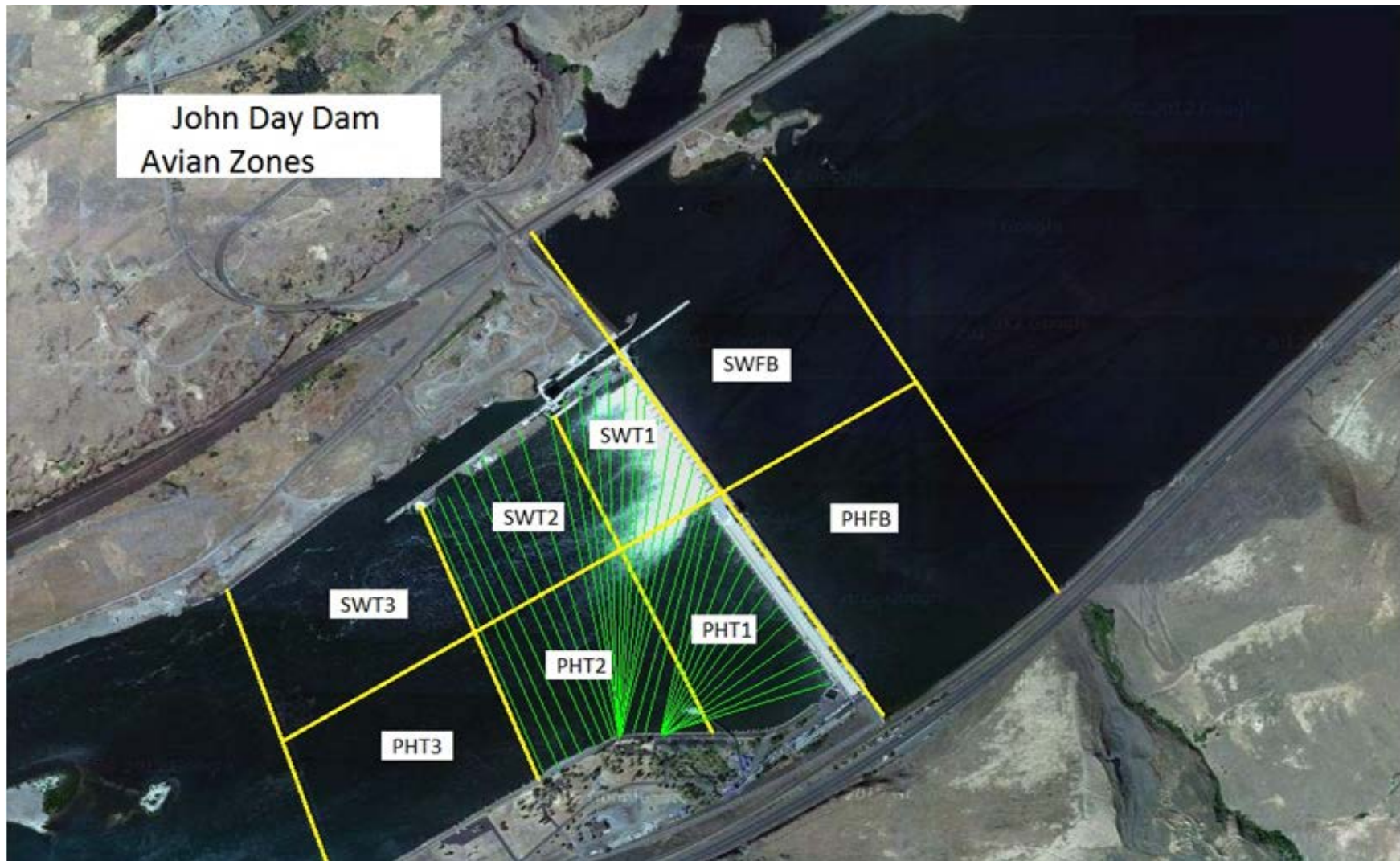
By: MDL

Bay(s)	Time	Sec.	Velocity (f/s)
0-2	1:19	79	2.28
2 - 4	2:33	153	2.43
4 - 6	3:51	231	2.31
6 - 8	5:08	308	2.34
8 - 10	6:20	380	2.50
10 - 12	7:38	458	2.31
12 - 14	8:56	536	2.31
14 - 16	10:10	610	2.43
16 - 18	11:13	673	2.86
			2.42

TW Bay19= 159.7

RPMs 68/68

John Day Dam
Avian Zones



John Day Weekly Averages

	Temp:	Secchi:	Fallbacks	
Sun	72	6.0		0.0
Mon	72	6.0	11	6 hour sample mode
Tue	72	6.0		
Wed	72	6.0		
Thur	72	6.0	10	6 hour sample mode
Fri	72	6.0		
Sat	72	6.0		
AVG:	72	AVG: 6.0	AVG 11	
			MAX 11	
			MIN 10	

	NE1	NE2	S.Ent	SE1	N.Ent	JBS Diff	Bay19
Sun	8.2	8.0	1.5	8.5	1.6	4.5	1.7
Sun	8.2	8.2	1.3	8.6	1.6	4.6	1.5
Mon	8.0	8.0	1.4	8.8	1.6	4.6	2.0
Mon	8.3	8.3	1.4	8.7	1.5	4.6	1.4
Tues	8.6	8.6	1.3	9.0	1.6	4.6	1.7
Tues	8.1	8.1	1.4	8.6	1.5	4.6	1.5
Wed	8.3	8.4	1.4	8.6	1.4	4.6	1.8
Wed	8.4	8.5	1.5	9.0	1.4	4.5	1.5
Thur	8.7	8.5	1.5	9.3	1.5	4.6	1.5
Thur	8.7	8.7	1.4	9.1	1.5	4.6	1.6
Fri	8.4	8.3	1.4	8.4	1.6	4.6	1.5
Fri	8.4	8.2	1.3	9.1	1.6	4.5	1.5
Sat	8.5	8.4	1.3	8.5	1.6	4.6	1.3
Sat	8.2	8.0	1.4	8.6	1.7	4.6	1.4
AVG:	8.4	8.3	1.4	8.8	1.6	4.6	1.6

JDA Bird Counts: 8/20/17 to 8/26/17

F(1): Forage AM survey F(2): Forage PM Survey NF(1): Non-Forage AM Survey NF(2): Non-Forage PM Survey

Date	Zone	Gulls				Cormorant				Caspian tern				White Pelican				Grebe				Total
		F(1)	F(2)	NF(1)	NF(2)	F(1)	F(2)	NF(1)	NF(2)	F(1)	F(2)	NF(1)	NF(2)	F(1)	F(2)	NF(1)	NF(2)	F(1)	F(2)	NF(1)	NF(2)	
24-Aug	PHFB	0	0	57	300	0	0	0	0	0	0	0	0	0	0	0	0	0	3	0	0	360
24-Aug	SWFB	0	0	0	25	0	0	0	0	0	0	0	0	0	0	0	0	0	0	0	0	25
24-Aug	PH1	0	0	0	0	0	0	0	0	0	0	0	0	0	0	0	0	0	0	0	0	0
24-Aug	PH2	0	0	0	0	0	0	0	0	0	0	0	0	0	0	0	0	0	0	0	0	0
24-Aug	PH3	0	0	0	0	0	0	0	0	0	0	0	0	14	0	9	0	0	0	0	0	23
24-Aug	SW1	0	0	0	0	0	0	0	0	0	0	0	0	0	0	0	0	0	0	0	0	0
24-Aug	SW2	0	77	0	0	0	0	0	0	0	0	0	0	10	17	0	0	0	0	0	0	104
24-Aug	SW3	81	0	0	0	0	0	0	0	0	0	0	0	13	0	0	0	0	0	0	0	94
Avg/Survey		79		191		0		0		0		0		27		5		2		0		606
25-Aug	PHFB	0	0	92	0	0	0	20	0	0	0	0	0	0	0	0	0	0	0	0	0	112
25-Aug	SWFB	0	0	21	0	0	0	0	0	0	0	0	0	0	0	0	0	0	0	0	0	21
25-Aug	PH1	0	0	0	0	0	0	0	0	0	0	0	0	0	0	0	0	0	0	0	0	0
25-Aug	PH2	0	0	0	0	0	0	0	0	0	0	0	0	1	0	0	0	0	0	0	0	1
25-Aug	PH3	0	0	0	0	0	0	0	0	0	0	0	0	16	0	23	0	0	0	0	0	39
25-Aug	SW1	0	3	0	0	0	0	0	0	0	0	0	0	0	15	0	0	0	0	0	0	18
25-Aug	SW2	0	37	0	0	0	0	0	0	0	0	0	0	13	22	0	0	0	0	0	0	72
25-Aug	SW3	191	55	0	0	0	0	0	0	0	0	0	0	27	39	0	2	0	0	0	0	314
Avg/Survey		143		57		0		10		0		0		67		13		0		0		577
26-Aug	PHFB	0	0	26	650	0	0	24	0	0	0	0	0	0	0	0	0	0	0	0	0	700
26-Aug	SWFB	0	0	93	0	0	0	0	0	0	0	0	0	0	0	0	0	0	0	0	0	93
26-Aug	PH1	0	0	0	0	0	0	0	0	0	0	0	0	0	0	0	0	0	0	0	0	0
26-Aug	PH2	0	0	0	0	0	0	0	0	0	0	0	0	3	0	0	0	0	0	0	0	3
26-Aug	PH3	0	0	0	0	0	0	0	0	0	0	0	0	19	0	11	0	0	0	0	0	30
26-Aug	SW1	0	0	0	0	0	0	0	0	0	0	0	0	0	0	0	0	0	0	0	0	0
26-Aug	SW2	0	0	0	0	0	0	0	0	0	0	0	0	10	77	0	0	0	0	0	0	87
26-Aug	SW3	20	0	140	0	0	0	0	0	0	0	0	0	25	0	2	0	0	0	0	0	187
Avg/Survey		10		455		0		12		0		0		67		7		0		0		1100
Totals		Gulls		Cormorant		Caspian tern		White Pelican		Grebe		Total										
		F	NF	F	NF	F	NF	F	NF	F	NF											
Weekly Total		1076	2183	0	64	0	0	916	52	5	6	4302										
Avg/Survey		77	156	0	5	0	0	65	4	0	0	307										