


FISHWAY STATUS REPORT

Date: 8/19/2017
Inspection Period: 8/13/2017 thru 8/19/2017



**US Army Corps
of Engineers**
Portland District

JOHN DAY DAM

JD/WC Project-Fisheries
P.O. Box 823
Rufus, Oregon 97050
Phone: 541-506-7860

All JD Fishways are inspected twice per day during fish passage season, Mar. 1 - Nov. 30.
Frequent monitoring of the PLC displays in SMF Fisheries Office as necessary.

John Day Dam	Inspections	Criteria	Total Number of Inspections:	14	Temperature:	72 F
	Out of Criteria	Limit	Secchi: 6.0 Ft.			
NORTH FISHWAY			In service with all 6 AWS pumps available since 1/19/17.			
Exit differential	0	≤ 0.5'				
Exit Control weirs	0	High setting	High setting is normal for JDN			
Count station differential	0	≤ 0.3'				
Weir crest depth (DS gauge)	0	1.0' ± 0.1'				
Entrance differential	0	1.0' - 2.0'	AVG	1.6		
SOUTH FISHWAY			In service since 3/3/17 with 2 out of 3 AWS turbines available.			
Exit differential	0	≤ 0.5'				
Exit Control weirs	0	Mid setting	Mid setting is normal for JDS			
Count station differential	0	≤ 0.3'				
Weir crest depth (US gauge)	0	1.0' ± 0.1'				
South entrance differential	0	1.0' - 2.0'	AVG	1.4		
Entrance weir SE1	0	depth (≥ 8')	AVG	8.8		
Collection channel velocity	0	1.5 - 4 fps	AVG	2.42		
N. Entrance PH(Bay 19)differential	0	1.0' - 2.0'	AVG	1.6		
Entrance weir NE1	0	depth (≥ 8')	AVG	8.4		
Entrance weir NE2	0	depth (≥ 8')	AVG	8.3		
JUVENILE PASSAGE			JBS in service since 3/30/17.			
Forebay/bypass conduit differential	0	4.0' - 5.0'	AVG	4.6		
Submersible traveling screens	0	visual inspect	August STS camera inspection completed by 8/17. No bad STSs were found.			
Turbine trashrack drawdown	0	<1.5', wkly	Trashrack Crane in service since 6/01.			
Vert barrier screen drawdown	0	<1.5', wkly				
Spill volume	0	FOP	Fish spill continues since per FOP. Bay 20 reduced to 3 stops since 5/23 (see JDA08MFR)			
Spill pattern	0	TSW per FPP	All Spillway bays in service since 5/22.			
Turbine Unit Priority	0	per FPP				
Turbine 1% Efficiency	0	per FPP				

SMOLT MONITORING FACILITY

Operation:

SMF in a limited, twice a week, 6 hrs sampling due to river temperatures above 70F since 7/23/17.

Maintenance:

STS annual maintenance all complete in mid-May.

SMF SCADA update/mods' investigation by JD Electrical/ Portland District Engineers is underway.

Research: None

Birds :

USDA gull hazing from a boat downstream of JD Tailrace BRZ ended on 7/30/17.

see the Avian Numbers tab.

6 Tower-to-Tower, 6 spillway (1 failed 23 August,) 4 Navlock and 4 PH lines are missing out of 125 grid's total. They will be reinstalled for the 2018 passage season.

Operations:

Spillbay #20 continues reduced to 3 stops after two adult chinook salmon were found stranded on the adjacent tailrace deck on 5/30 (see JDA08MFR.)

Trashrack Crane in service since 6/01/17.

JD South Fishway in service with two AWS Turbines and meeting all FPP criteria since 3/3/17.

JD North Fishway in service with all 6 AWS pumps available and meeting all FPP criteria since 1/19/17.

MU Gatewell Drawdowns: weekly or more frequently as necessary.

Maintenance:

Trashrack Crane was repaired/ returned to service on 6/01.

JD STS crane's emergency repairs were all completed in February with the minor glitches/ adjustments continuing. The crane remains in a risky operational condition until it's replaced with a brand new machine. However, the \$ 5 million for its replacement is not yet available.

Calibration: All gauges/ sensors are within the criteria of 0.3' .

Research:

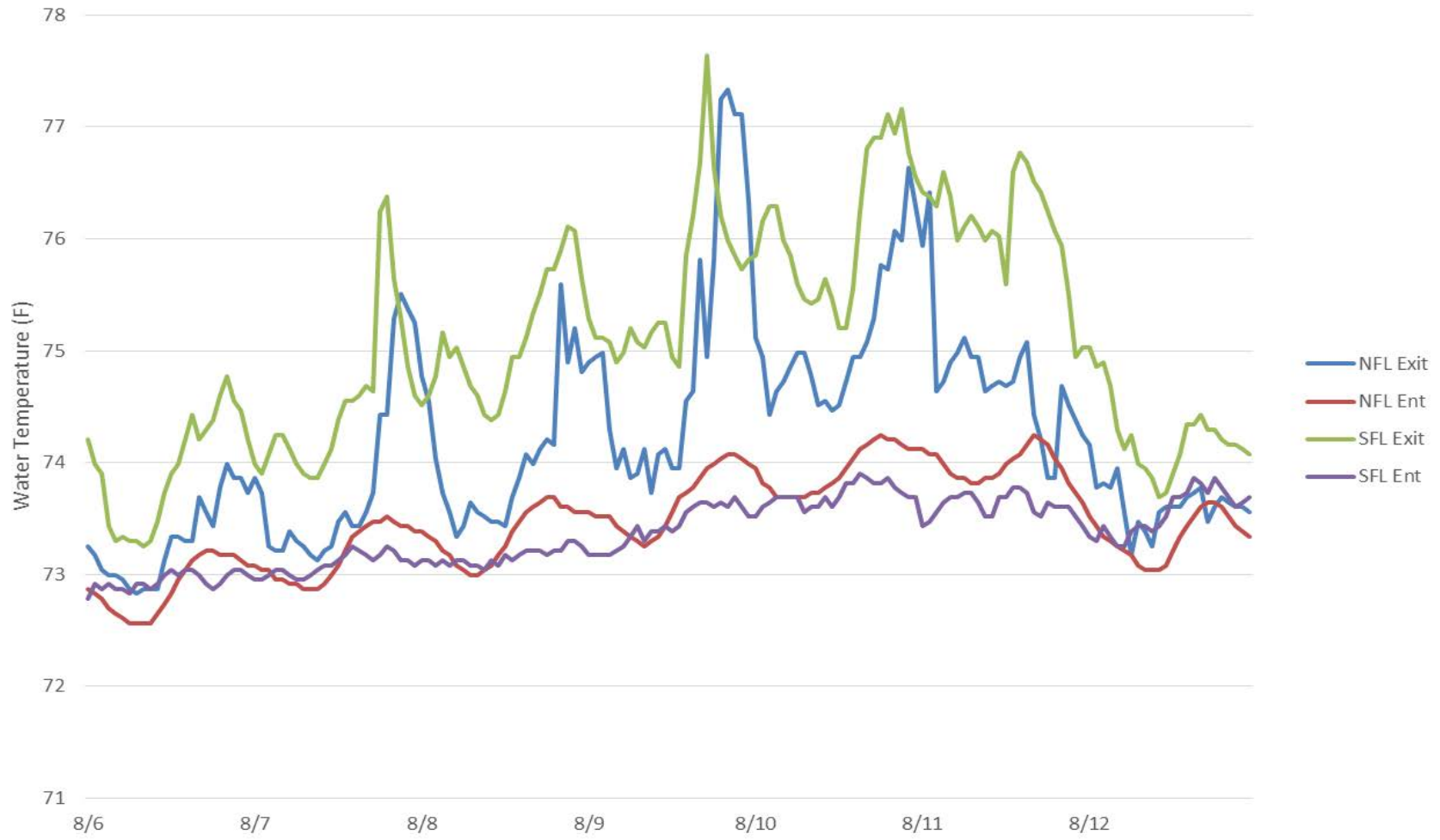
All tribal lamprey trapping successfully ended on 8/18/17.

WDFW angling crew continues the pikeminnow removal from JD PH tailrace (fishing from PH deck) since 5/15. **Great catches with 3,326 NPM total by 8/20.**

Adult PIT antennas' installation at JD South Fishway finished on 23 Feb. Both ladders' antennas in service with temporary power sources. Phase 2 support contract to install building/ office spaces plus electrical and Gorgenet hookups underway since 7 August.

MOYNAHAN, KEVIN, PATRICK, 1393959157
E-Signed by MOYNAHAN, KEVIN, PATRICK, 1393959157
VERIFY authenticity with ApproveIt

JDA Fishladder Temps (8/6/17 - 8/12/17)



JDA Collection Channel Velocity

Date 11-Aug-17

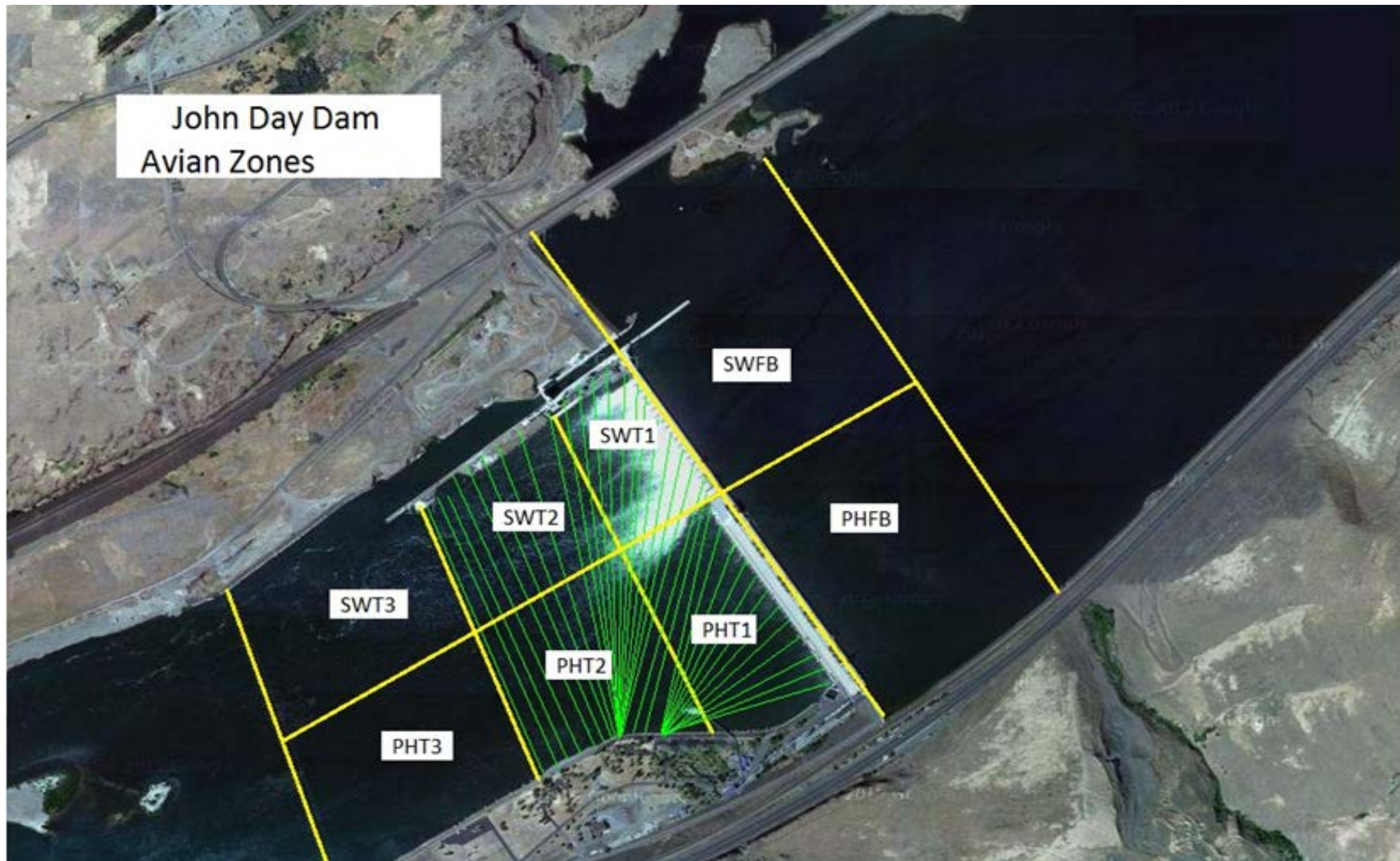
By: MDL

Bay(s)	Time	Sec.	Velocity (f/s)
0-2	1:19	79	2.28
2 - 4	2:40	160	2.22
4 - 6	3:57	237	2.34
6 - 8	5:11	311	2.43
8 - 10	6:27	387	2.37
10 - 12	7:48	468	2.22
12 - 14	9:13	553	2.12
14 - 16	10:27	627	2.43
16 - 18	11:29	689	2.90
			2.37

TW Bay19= 158.9

RPMs 68/68

John Day Dam
Avian Zones



John Day Weekly Averages

	Temp:	Secchi:	Fallbacks	
Sun	73	6.0		0.0
Mon	73	6.0	18	6 hour sample mode
Tue	73	6.0		
Wed	72	6.0		
Thur	72	6.0	12	6 hour sample mode
Fri	72	5.0		
Sat				
AVG:	73	AVG: 5.8	AVG 15	
			MAX 18	
			MIN 12	

	NE1	NE2	S.Ent	SE1	N.Ent	JBS Diff	Bay19
Sun	8.1	8.6	1.0	9.3	1.5	4.6	1.5
Sun	8.3	8.5	1.4	9.0	1.6	4.6	1.7
Mon	8.1	8.3	1.3	8.8	1.5	4.5	1.8
Mon	8.5	8.5	1.5	8.4	1.5	4.6	1.6
Tues	8.5	8.4	1.5	8.0	1.6	4.6	1.7
Tues	8.4	8.3	1.6	8.5	1.6	4.6	1.6
Wed	8.1	8.0	1.4	8.2	1.6	4.6	1.8
Wed	8.4	8.4	1.4	8.5	1.6	4.6	1.6
Thur	8.4	8.4	1.4	8.9	1.4	4.6	1.8
Thur	8.5	8.5	1.2	8.9	1.5	4.6	1.5
Fri	8.2	8.1	1.4	8.8	1.5	4.6	1.7
Fri	9.7	9.7	1.3	8.9	1.4	4.6	1.4
Sat	8.1	8.0	1.3	8.5	1.5	4.6	1.7
Sat	8.3	8.3	1.3	8.4	1.5	4.6	1.4
AVG:	8.4	8.4	1.4	8.7	1.5	4.6	1.6

JDA Bird Counts: 8/13/17 to 8/19/17

F(1): Forage AM survey F(2): Forage PM Survey NF(1): Non-Forage AM Survey NF(2): Non-Forage PM Survey

Date	Zone	Gulls				Cormorant				Caspian tern				White Pelican				Grebe				Total
		F(1)	F(2)	NF(1)	NF(2)	F(1)	F(2)	NF(1)	NF(2)	F(1)	F(2)	NF(1)	NF(2)	F(1)	F(2)	NF(1)	NF(2)	F(1)	F(2)	NF(1)	NF(2)	
13-Aug	PHFB	0	0	0	28	0	0	0	0	0	0	0	0	0	0	0	0	5	6	0	0	39
13-Aug	SWFB	0	0	51	0	0	0	0	0	0	0	0	0	0	0	0	0	0	0	0	0	51
13-Aug	PH1	0	0	0	0	0	0	0	0	0	0	0	0	0	0	0	0	0	0	0	0	0
13-Aug	PH2	0	0	0	0	0	0	0	0	0	0	0	0	0	0	0	0	0	0	0	0	0
13-Aug	PH3	0	0	0	0	0	0	0	0	0	0	0	0	0	0	0	0	0	0	0	0	0
13-Aug	SW1	0	0	0	0	0	0	0	0	0	0	0	0	2	0	0	0	0	0	0	0	2
13-Aug	SW2	0	0	0	0	0	0	0	0	0	0	0	0	0	0	4	0	0	0	0	0	4
13-Aug	SW3	0	0	0	0	0	0	0	0	0	0	0	0	0	0	6	0	0	0	0	0	6
Avg/Survey		0	0	40	0	0	0	0	0	0	0	0	0	1	0	5	0	6	0	0	0	102
14-Aug	PHFB	0	0	0	71	0	0	11	0	0	0	0	0	0	0	0	0	5	4	0	0	91
14-Aug	SWFB	7	0	99	32	0	0	0	0	0	0	0	0	0	0	0	0	0	0	0	0	138
14-Aug	PH1	0	0	0	0	0	0	0	0	0	0	0	0	0	0	0	0	0	0	0	0	0
14-Aug	PH2	0	0	0	0	0	0	0	0	0	0	0	0	2	0	0	0	0	0	0	0	2
14-Aug	PH3	0	9	0	0	0	0	0	0	0	0	0	0	0	0	81	24	0	0	0	0	114
14-Aug	SW1	0	0	0	0	0	0	0	0	0	0	0	0	0	0	0	0	0	0	0	0	0
14-Aug	SW2	0	0	0	0	0	0	0	0	0	0	0	0	14	0	0	3	0	0	0	0	17
14-Aug	SW3	23	6	0	0	0	0	0	0	0	0	0	0	153	0	0	0	0	0	0	0	182
Avg/Survey		23	0	101	0	0	0	6	0	0	0	0	0	85	0	54	0	5	0	0	0	544
15-Aug	PHFB	0	0	69	320	0	0	15	0	0	0	0	0	0	0	0	0	1	0	0	0	405
15-Aug	SWFB	0	0	37	0	0	0	0	0	0	0	0	0	0	0	0	0	0	0	0	0	37
15-Aug	PH1	0	0	0	0	0	0	0	0	0	0	0	0	5	0	0	0	0	0	0	0	5
15-Aug	PH2	0	0	0	0	0	0	0	0	0	0	0	0	23	0	0	0	0	0	0	0	23
15-Aug	PH3	41	42	0	0	0	0	0	7	0	0	0	0	49	12	53	3	0	0	0	0	207
15-Aug	SW1	0	0	0	0	0	0	0	0	0	0	0	0	3	0	0	0	0	0	0	0	3
15-Aug	SW2	0	0	0	0	0	0	0	0	0	0	0	0	23	8	0	0	0	0	0	0	31
15-Aug	SW3	29	4	0	0	0	0	0	0	0	0	0	0	51	9	23	0	0	0	0	0	116
Avg/Survey		58	0	213	0	0	0	11	0	0	0	0	0	92	0	40	0	1	0	0	0	827
16-Aug	PHFB	0	0	7	0	0	0	0	0	0	0	0	0	0	0	0	0	0	0	0	6	13
16-Aug	SWFB	0	0	33	0	0	0	0	0	0	0	0	0	0	0	0	0	0	0	0	0	33
16-Aug	PH1	0	0	0	0	0	0	0	0	0	0	0	0	0	0	0	0	0	0	0	0	0
16-Aug	PH2	0	0	0	0	0	0	0	0	0	0	0	0	0	0	0	0	0	0	0	0	0
16-Aug	PH3	0	0	0	0	0	0	0	0	0	0	0	0	0	12	0	0	0	0	0	0	12
16-Aug	SW1	0	0	0	0	0	0	0	0	0	0	0	0	0	0	0	0	0	0	0	0	0
16-Aug	SW2	8	0	0	0	0	0	0	0	0	0	0	0	12	34	0	0	0	0	0	0	54
16-Aug	SW3	0	0	0	0	0	0	0	0	0	0	0	0	7	42	0	0	0	0	0	0	49
Avg/Survey		4	0	20	0	0	0	0	0	0	0	0	0	54	0	0	0	0	0	0	3	161

JDA Bird Counts: 8/13/17 to 8/19/17

F(1): Forage AM survey F(2): Forage PM Survey NF(1): Non-Forage AM Survey NF(2): Non-Forage PM Survey

Date	Zone	Gulls				Cormorant				Caspian tern				White Pelican				Grebe				Total				
		F(1)	F(2)	NF(1)	NF(2)	F(1)	F(2)	NF(1)	NF(2)	F(1)	F(2)	NF(1)	NF(2)	F(1)	F(2)	NF(1)	NF(2)	F(1)	F(2)	NF(1)	NF(2)					
17-Aug	PHFB	0	0	0	0	0	0	0	0	0	0	0	0	0	0	0	0	0	0	0	0	0	0	0	0	0
17-Aug	SWFB	0	0	36	27	0	0	0	0	0	0	0	0	0	0	0	0	0	0	0	0	0	0	0	0	63
17-Aug	PH1	0	0	0	0	0	0	0	0	0	0	0	0	0	0	0	0	0	0	0	0	0	0	0	0	0
17-Aug	PH2	0	0	0	0	0	0	0	0	0	0	0	0	0	0	0	0	0	0	0	0	0	0	0	0	0
17-Aug	PH3	17	0	0	0	0	0	0	0	0	0	0	0	21	6	0	0	0	0	0	0	0	0	0	0	44
17-Aug	SW1	0	0	0	0	0	0	0	0	0	0	0	0	0	2	0	0	0	0	0	0	0	0	0	0	2
17-Aug	SW2	0	0	0	0	0	0	0	0	0	0	0	0	11	9	0	0	0	0	0	0	0	0	0	0	20
17-Aug	SW3	0	0	0	0	0	0	0	0	0	0	0	0	38	42	0	0	0	0	0	0	0	0	0	0	80
Avg/Survey		9		32		0		0		0		0		65		0		0		0		0		209		
18-Aug	PHFB	0	0	0	0	0	0	0	0	0	0	0	0	0	0	0	0	0	0	0	0	0	0	0	9	9
18-Aug	SWFB	0	0	34	0	0	0	0	0	0	0	0	0	0	0	0	0	0	0	0	0	0	0	0	0	34
18-Aug	PH1	0	0	0	0	0	0	0	0	0	0	0	0	0	0	0	0	0	0	0	0	0	0	0	0	0
18-Aug	PH2	7	0	0	0	0	0	0	0	0	0	0	0	3	0	0	0	0	0	0	0	0	0	0	0	10
18-Aug	PH3	12	0	0	0	0	0	0	0	0	0	0	0	3	0	0	0	0	0	0	0	0	0	0	0	15
18-Aug	SW1	0	0	0	0	0	0	0	0	0	0	0	0	0	0	0	0	0	0	0	0	0	0	0	0	0
18-Aug	SW2	20	11	0	0	0	0	0	0	0	0	0	0	13	0	0	0	0	0	0	0	0	0	0	0	44
18-Aug	SW3	92	5	0	0	0	0	0	0	0	0	0	0	42	3	0	0	0	0	0	0	0	0	0	0	142
Avg/Survey		74		17		0		0		0		0		32		0		0		0		5		254		
19-Aug	PHFB	0	0	2	0	0	0	0	0	0	0	0	0	0	0	0	0	0	0	0	0	0	0	0	0	2
19-Aug	SWFB	0	0	61	0	0	0	0	0	0	0	0	0	0	0	0	0	0	0	0	0	0	0	0	0	61
19-Aug	PH1	0	0	0	0	0	0	0	0	0	0	0	0	0	0	0	0	0	0	0	0	0	0	0	0	0
19-Aug	PH2	3	0	0	0	0	0	0	0	0	0	0	0	5	3	0	0	0	0	0	0	0	0	0	0	11
19-Aug	PH3	19	0	0	0	0	0	0	0	0	0	0	0	22	4	0	0	0	0	0	0	0	0	0	0	45
19-Aug	SW1	0	0	0	0	0	0	0	0	0	0	0	0	0	0	0	0	0	0	0	0	0	0	0	0	0
19-Aug	SW2	22	14	0	0	0	0	0	0	0	0	0	0	17	18	0	0	0	0	0	0	0	0	0	0	71
19-Aug	SW3	157	10	0	0	0	0	0	0	0	0	0	0	61	33	0	0	0	0	0	0	0	0	0	0	261
Avg/Survey		113		32		0		0		0		0		82		0		0		0		0		451		
Totals		Gulls				Cormorant				Caspian tern				White Pelican				Grebe				Total				
		F		NF		F		NF		F		NF		F		NF		F		NF			F		NF	
Weekly Total		558		907		0		33		0		0		817		197		21		15			2548			
Avg/Survey		40		65		0		2		0		0		58		14		2		1		182				