


FISHWAY STATUS REPORT

Date: 6/10/2017
 Inspection Period: 6/4/2017 thru 6/10/2017



**US Army Corps
of Engineers**
Portland District

JOHN DAY DAM

JD/WC Project-Fisheries
 P.O. Box 823
 Rufus, Oregon 97050
 Phone: 541-506-7860

All JD Fishways are inspected twice per day during fish passage season, Mar. 1 - Nov. 30.
 Frequent monitoring of the PLC displays in SMF Fisheries Office as necessary.

John Day Dam	Inspections	Criteria	Total Number of Inspections: 14	Temperature: 55 F
	Out of Criteria	Limit		Secchi: 3.5 Ft.
NORTH FISHWAY			In service with all 6 AWS pumps available since 1/19/17.	
Exit differential	0	≤ 0.5'		
Exit Control weirs	0	High setting	High setting is normal for JDN	
Count station differential	0	≤ 0.3'		
Weir crest depth (DS gauge)	0	1.3' ± 0.1'	1.3 for shad passage since 6/05.	
Entrance differential	0	1.0' - 2.0'	AVG 1.5	
SOUTH FISHWAY			In service since 3/3/17 with 2 out of 3 AWS turbines available.	
Exit differential	0	≤ 0.5'		
Exit Control weirs	0	Mid setting	Mid setting is normal for JDS	
Count station differential	0	≤ 0.3'		
Weir crest depth (US gauge)	0	1.3' ± 0.1'	1.3 for shad passage since 6/05.	
South entrance differential	0	1.0' - 2.0'	AVG 1.1	
Entrance weir SE1	0	depth (≥ 8')	AVG 8.1	
Collection channel velocity	0	1.5 - 4 fps	AVG	
N. Entrance PH(Bay 19)differential	0	1.0' - 2.0'	AVG 1.9	
Entrance weir NE1	0	depth (≥ 8')	AVG 10.9	
Entrance weir NE2	0	depth (≥ 8')	AVG 10.9	
JUVENILE PASSAGE			JBS in service since 3/30/17.	
Forebay/bypass conduit differential	0	4.0' - 5.0'	AVG 4.6	
Submersible traveling screens	0	visual inspect	STS camera inspection scheduled for the week of 6/19.	
Turbine trashrack drawdown	0	<1.5', wkly	Trashrack Crane was repaired/ returned to service on 6/01. Raked on 6/02, Friday.	
Vert barrier screen drawdown	0	<1.5', wkly		
Spill volume	0	FOP	Fish spill continues since per FOP. Bay 20 reduced to 3 stops since 5/23 (see JDA08MFR)	
Spill pattern	0	TSW per FPP	All Spillway bays in service since 5/22.	
Turbine Unit Priority	0	per FPP		
Turbine 1% Efficiency	0	per FPP		

SMOLT MONITORING FACILITY

Operation:

SMF in service since 3/28 with every other day, 24 hrs condition sampling.

Maintenance:

STS annual maintenance all complete in mid-May.

SMF SCADA update/mods' investigation by JD Electrical/ Portland District Engineers is underway.

Research: Approval of access' letters are being sent out for this year's research/access requests

Birds :

USDA gull hazing from a boat downstream of JD Tailrace BRZ continues since 5/15. The numbers of gulls fishing at JD have been low so far in 2017. see the Avian Numbers tab.

6 Tower-to-Tower, 3 spillway (2 failed in May,) 2 Navlock and 2 PH lines are missing out of 125 grid's total. They will be reinstalled for the 2018 passage season.

Operations:

Spillbay #20 was reduced to 3 stops on 5/23 after two adult chinook salmon were found stranded on the adjacent tailrace deck (see JDA08MFR.)

Trashrack Crane returned to service on 6/01. Raked trashracks on 6/02, Friday.

JD South Fishway in service with two AWS Turbines and meeting all FPP criteria since 3/3/17.

JD North Fishway in service with all 6 AWS pumps available and meeting all FPP criteria since 1/19/17.

MU Gatewell Drawdowns: weekly or more frequently as necessary.

Maintenance:

Trashrack Crane was repaired/ returned to service on 6/01.

JD STS crane's emergency repairs were all completed in February with the minor glitches/ adjustments continuing. The crane remains in a risky operational condition until it's replaced with a brand new machine. However, the \$ 5 million for its replacement is not yet available.

Calibration: All gauges/ sensors are within the criteria of 0.3' .

Research:

WDFW angling crew continues the pikeminnow removal from JD PH tailrace (fishing from PH deck) since 5/15. **Great catches with 617 NPM total by 6/11.**

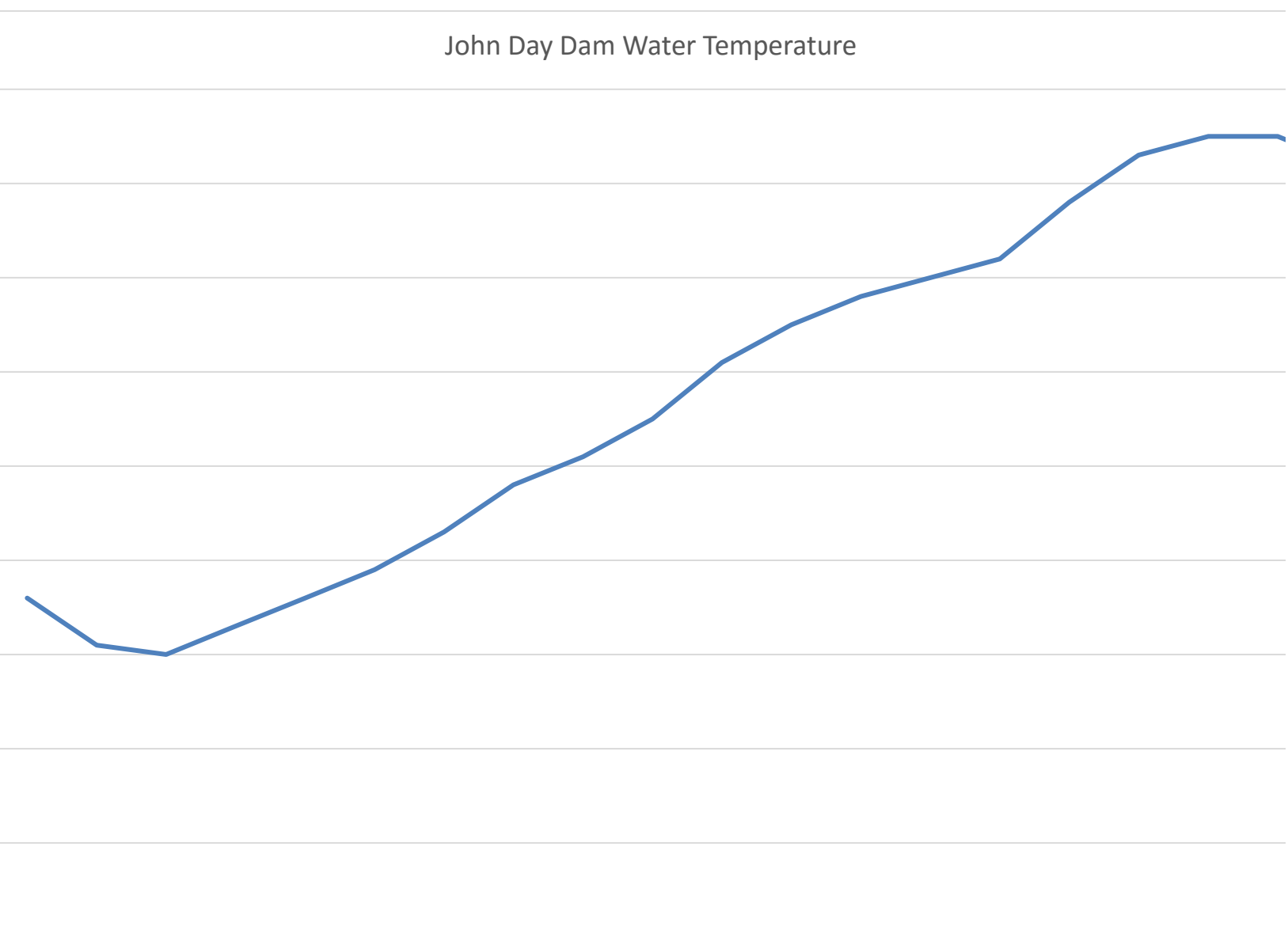
Adult PIT antennas' installation at JD South Fishway finished on 23 Feb. Both ladders' antennas in service with temporary power sources.

MOYNAHAN, KEVIN, PATRICK, 1393959157
E-Signed by MOYNAHAN, KEVIN, PATRICK, 1393959157
VERIFY authenticity with ApproveIt

John Day Dam Water Temperature

Water Temperature (F)

59
58
57
56
55
54
53
52
51
50



5/15 5/16 5/17 5/18 5/19 5/20 5/21 5/22 5/23 5/24 5/25 5/26 5/27 5/28 5/29 5/30 5/31 6/1 6/2



JDA Collection Channel Velocity

Date 22-May-17

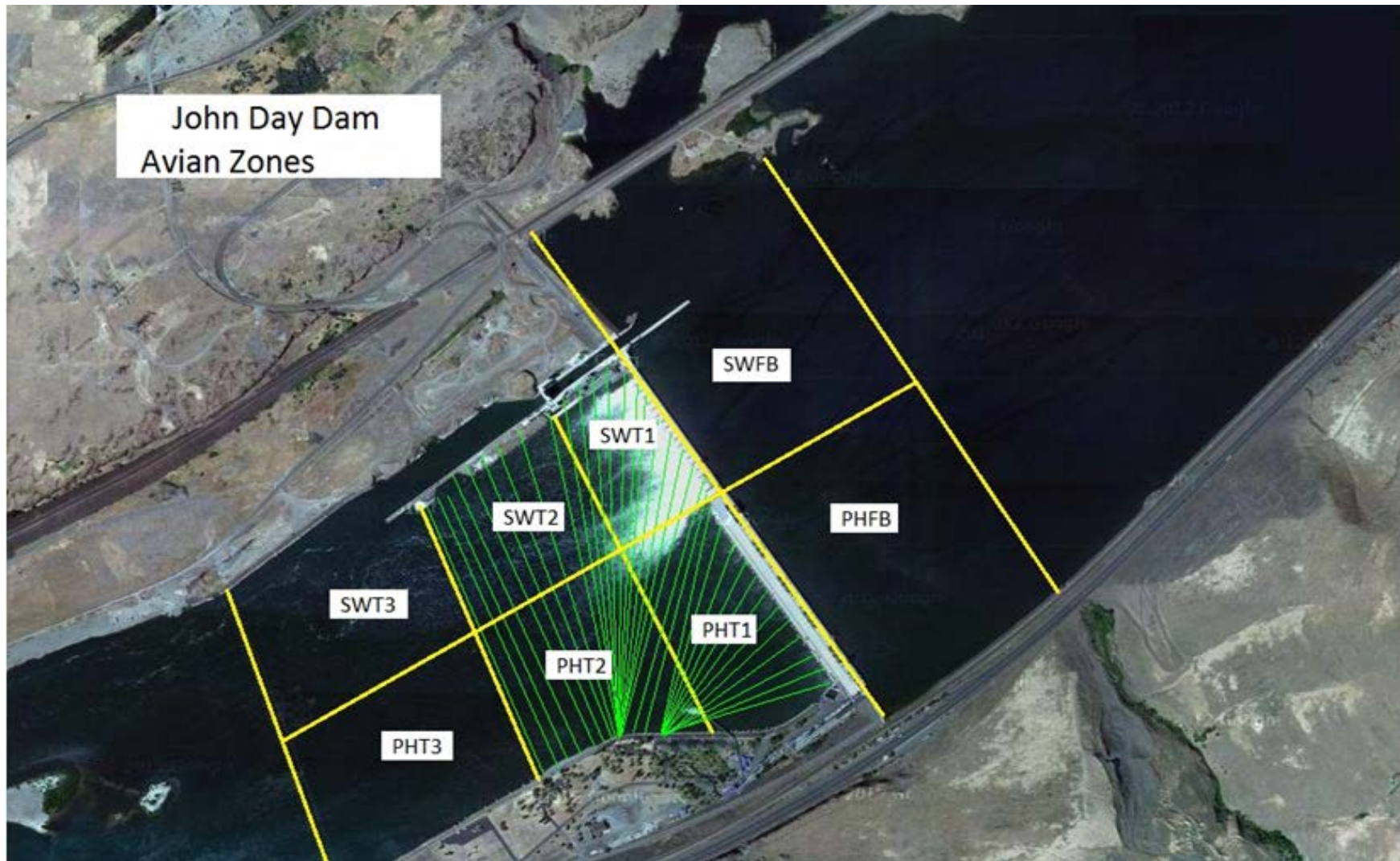
By: pete

Bay(s)	Time	Sec.	Velocity (f/s)
0-2	1:11	71	2.54
2 - 4	2:21	141	2.57
4 - 6	3:38	218	2.34
6 - 8	4:45	285	2.69
8 - 10	5:56	356	2.54
10 - 12	7:09	429	2.47
12 - 14	8:18	498	2.61
14 - 16	9:25	565	2.69
16 - 18	10:27	627	2.90
			2.59

SE-1 TW = 165.0'

turbine 1 & 2 = 68 rpm

John Day Dam
Avian Zones



John Day Weekly Averages

	Temp:	Secchi:	Fallbacks
Sun	58	3.0	Bypass
Mon	58	3.0	96
Tue	58	3.0	Bypass
Wed	58	4.0	77
Thur	58	3.5	Bypass
Fri	59	4.0	71
Sat	59	4.0	Bypass
AVG:	58	AVG: 3.5	AVG 81
			MAX 96
			MIN 71

	NE1	NE2	S.Ent	SE1	N.Ent	JBS Diff	Bay19
Sun	11.4	11.3	1.1	8.1	1.6	4.6	1.9
Sun	11.2	11.1	1.1	8.1	1.5	4.6	1.9
Mon	11.3	11.1	1.0	8.2	1.6	4.6	1.9
Mon	10.7	10.6	1.1	8.1	1.4	4.6	1.9
Tues	10.2	10.1	1.3	8.0	1.6	4.5	2.0
Tues	10.7	10.7	1.0	8.2	1.5	4.6	1.9
Wed	10.4	10.4	1.2	8.1	1.5	4.5	1.5
Wed	10.5	10.4	1.2	8.2	1.5	4.5	1.5
Thur	11.0	10.8	1.2	8.1	1.4	4.5	1.6
Thur	10.4	10.2	1.2	8.0	1.6	4.5	1.8
Fri	12.2	12.1	1.1	8.2	1.3	4.5	1.5
Fri	10.0	9.9	1.1	8.3	1.6	4.6	1.8
Sat	11.9	11.7	1.1	8.0	1.4	4.5	1.8
Sat	11.2	11.4	1.1	8.2	1.4	4.6	1.6
AVG:	10.9	10.8	1.1	8.1	1.5	4.6	1.8

JDA Bird Counts: 6/4/17 to 6/10/17

F(1): Forage AM survey F(2): Forage PM Survey NF(1): Non-Forage AM Survey NF(2): Non-Forage PM Survey

Date	Zone	Gulls				Cormorant				Caspian tern				White Pelican				Grebe				Total
		F(1)	F(2)	NF(1)	NF(2)	F(1)	F(2)	NF(1)	NF(2)	F(1)	F(2)	NF(1)	NF(2)	F(1)	F(2)	NF(1)	NF(2)	F(1)	F(2)	NF(1)	NF(2)	
4-Jun	PHFB	0	0	0	0	0	0	0	0	0	0	0	0	0	0	0	0	20	23	20	24	87
4-Jun	SWFB	0	0	0	0	0	0	0	0	0	0	0	0	0	0	0	0	0	0	0	0	0
4-Jun	PH1	0	0	0	0	0	0	0	0	0	0	0	0	0	0	0	0	0	0	0	0	0
4-Jun	PH2	0	0	0	0	0	0	0	0	0	0	0	0	0	0	0	0	0	0	0	0	0
4-Jun	PH3	0	0	0	0	0	0	0	0	0	0	0	0	0	0	0	0	0	0	0	0	0
4-Jun	SW1	7	5	0	0	0	0	0	0	0	0	0	0	0	0	0	0	0	0	0	0	12
4-Jun	SW2	3	2	0	0	0	0	0	0	0	0	0	0	0	0	0	0	0	0	0	0	5
4-Jun	SW3	1	0	0	0	0	0	0	0	0	0	0	0	0	0	0	0	0	0	0	0	1
Avg/Survey		9	0	0	0	0	0	0	0	0	0	0	0	0	0	0	0	22	22			105
5-Jun	PHFB	0	0	0	2	0	0	0	0	0	0	0	0	0	0	0	0	20	20	21	20	83
5-Jun	SWFB	0	0	0	1	0	0	0	0	0	0	0	0	0	0	0	0	0	0	0	0	1
5-Jun	PH1	4	0	0	0	0	0	0	0	0	0	0	0	0	0	0	0	0	0	0	0	4
5-Jun	PH2	0	0	0	0	0	0	0	0	0	0	0	0	0	0	0	0	0	0	0	0	0
5-Jun	PH3	0	0	0	0	0	0	0	0	0	0	0	0	0	0	0	0	0	0	0	0	0
5-Jun	SW1	0	4	0	0	0	0	0	0	0	0	0	0	0	0	0	0	0	0	0	0	4
5-Jun	SW2	2	0	0	0	0	0	0	0	0	0	0	0	0	0	0	0	0	0	0	0	2
5-Jun	SW3	2	3	0	0	0	0	0	0	0	0	0	0	1	0	0	0	0	0	0	0	6
Avg/Survey		8	2	0	0	0	0	0	0	0	0	0	0	1	0	0	0	20	21			100
6-Jun	PHFB	0	0	0	1	0	0	0	0	0	0	0	0	0	0	0	0	21	8	21	9	60
6-Jun	SWFB	0	0	0	0	0	0	0	0	0	0	0	0	0	0	0	0	0	0	0	0	0
6-Jun	PH1	0	0	0	0	0	0	0	0	0	0	0	0	0	0	0	0	0	0	0	0	0
6-Jun	PH2	0	0	0	0	0	0	0	0	0	0	0	0	0	0	0	0	0	0	0	0	0
6-Jun	PH3	0	0	0	0	0	0	0	0	0	0	0	0	0	0	0	0	0	0	0	0	0
6-Jun	SW1	0	3	0	0	0	0	0	0	0	0	0	0	0	0	0	0	0	0	0	0	3
6-Jun	SW2	2	3	0	0	0	0	0	0	0	0	0	0	0	0	0	0	0	0	0	0	5
6-Jun	SW3	2	0	0	0	0	0	0	0	0	0	0	0	0	0	0	0	0	0	0	0	2
Avg/Survey		5	1	0	0	0	0	0	0	0	0	0	0	0	0	0	0	15	15			70
7-Jun	PHFB	21	0	0	0	0	0	0	0	0	0	0	0	0	0	0	0	17	21	0	0	59
7-Jun	SWFB	0	0	0	0	0	0	0	0	0	0	0	0	0	0	0	0	0	0	0	0	0
7-Jun	PH1	0	0	0	0	0	0	0	0	0	0	0	0	0	0	0	0	0	0	0	0	0
7-Jun	PH2	0	0	0	0	0	0	0	0	0	0	0	0	0	0	0	0	0	0	0	0	0
7-Jun	PH3	7	7	0	0	0	0	0	0	0	0	0	0	0	0	0	0	0	0	0	0	14
7-Jun	SW1	0	0	0	0	0	0	0	0	0	0	0	0	0	0	0	0	0	0	0	0	0
7-Jun	SW2	0	0	0	0	0	0	0	0	0	0	0	0	0	0	0	0	0	0	0	0	0
7-Jun	SW3	3	53	0	0	0	0	0	0	0	0	0	0	0	0	0	0	0	0	0	0	56
Avg/Survey		46	0	0	0	0	0	0	0	0	0	0	0	0	0	0	0	19	0			129

JDA Bird Counts: 6/4/17 to 6/10/17

F(1): Forage AM survey F(2): Forage PM Survey NF(1): Non-Forage AM Survey NF(2): Non-Forage PM Survey

Date	Zone	Gulls				Cormorant				Caspian tern				White Pelican				Grebe				Total
		F(1)	F(2)	NF(1)	NF(2)	F(1)	F(2)	NF(1)	NF(2)	F(1)	F(2)	NF(1)	NF(2)	F(1)	F(2)	NF(1)	NF(2)	F(1)	F(2)	NF(1)	NF(2)	
8-Jun	PHFB	0	0	11	0	0	0	0	0	0	0	0	0	0	0	0	0	22	21	0	0	54
8-Jun	SWFB	0	0	0	0	0	0	0	0	0	0	0	0	0	0	0	0	0	0	0	0	0
8-Jun	PH1	0	1	0	0	0	0	0	0	0	0	0	0	0	0	0	0	0	0	0	0	1
8-Jun	PH2	0	0	0	0	0	0	0	0	0	0	0	0	0	0	0	0	0	0	0	0	0
8-Jun	PH3	2	2	0	0	0	0	0	0	0	0	0	0	0	0	0	0	0	0	0	0	4
8-Jun	SW1	0	0	0	0	0	0	0	0	0	0	0	0	0	0	0	0	0	0	0	0	0
8-Jun	SW2	0	0	0	0	0	0	0	0	0	0	0	0	0	0	0	0	0	0	0	0	0
8-Jun	SW3	1	11	0	0	0	0	0	0	0	0	0	0	0	0	0	0	0	0	0	0	12
Avg/Survey		9		6		0		0		0		0		0		0		22		0		71
9-Jun	PHFB	7	0	0	0	0	0	0	3	0	0	0	0	0	0	0	0	23	22	0	0	55
9-Jun	SWFB	0	0	0	0	0	0	0	0	0	0	0	0	0	0	0	0	0	0	0	0	0
9-Jun	PH1	0	0	0	0	0	0	0	0	0	0	0	0	0	0	0	0	0	0	0	0	0
9-Jun	PH2	0	0	0	0	0	0	0	0	0	0	0	0	0	0	0	0	0	0	0	0	0
9-Jun	PH3	1	3	0	0	0	0	0	0	0	0	0	0	0	0	0	0	0	0	0	0	4
9-Jun	SW1	0	0	0	0	0	0	0	0	0	0	0	0	0	0	0	0	0	0	0	0	0
9-Jun	SW2	5	4	0	0	0	0	0	0	0	0	0	0	0	0	0	0	0	0	0	0	9
9-Jun	SW3	1	11	0	0	0	0	0	0	0	0	0	0	0	0	0	0	0	0	0	0	12
Avg/Survey		16		0		0		2		0		0		0		0		23		0		80
10-Jun	PHFB	0	0	0	7	0	0	0	0	0	0	0	0	0	0	0	0	21	19	0	0	47
10-Jun	SWFB	0	0	0	0	0	0	0	0	0	0	0	0	0	0	0	0	0	0	0	0	0
10-Jun	PH1	0	0	0	0	0	0	0	0	0	0	0	0	0	0	0	0	0	0	0	0	0
10-Jun	PH2	0	0	0	0	0	0	0	0	0	0	0	0	0	0	0	0	0	0	0	0	0
10-Jun	PH3	2	1	0	0	0	0	0	0	0	0	0	0	0	0	0	0	0	0	0	0	3
10-Jun	SW1	0	0	0	0	0	0	0	0	0	0	0	0	0	0	0	0	0	0	0	0	0
10-Jun	SW2	1	2	0	0	0	0	0	0	0	0	0	0	0	0	0	0	0	0	0	0	3
10-Jun	SW3	1	6	0	0	0	0	0	0	0	0	0	0	0	0	0	0	0	0	0	0	7
Avg/Survey		7		4		0		0		0		0		0		0		20		0		60
Totals		Gulls				Cormorant				Caspian tern				White Pelican				Grebe				Total
		F		NF		F		NF		F		NF		F		NF		F		NF		
Weekly Total		196		22		0		3		0		0		1		0		278		115		615
Avg/Survey		14		2		0		0		0		0		0		0		20		8		44