


FISHWAY STATUS REPORT

Date: 3/4/2017
Inspection Period: 2/26/2017 thru 3/4/2017



**US Army Corps
of Engineers**
Portland District

JOHN DAY DAM

JD/WC Project-Fisheries
P.O. Box 823
Rufus, Oregon 97050
Phone: 541-506-7860

All JD Fishways are inspected once per day during fish season, Dec. 1 - Feb. 29.
Frequent monitoring of the PLC displays in SMF Fisheries Office as necessary.

John Day Dam	Inspections	Criteria	Total Number of Inspections: 11	Temperature: 38 F
	Out of Criteria	Limit	Secchi: 4.1 Ft.	
NORTH FISHWAY			Returned to service on 1/19/17 after its winter maintenance was all completed.	
Exit differential	0	≤ 0.5'		
Exit Control weirs	0	High setting	High setting is normal for JDN	
Count station differential	0	≤ 0.3'		
Weir crest depth (DS gauge)	0	1.0' ± 0.1'	Diffuser 9 in auto, sensor replaced.	
Entrance differential	0	1.0' - 2.0'	AVG 1.6	
SOUTH FISHWAY			RTS 3 March	
Exit differential	0	≤ 0.5'		
Exit Control weirs	0	Mid setting	Mid setting is normal for JDS	
Count station differential	0	≤ 0.3'		
Weir crest depth (US gauge)	0	1.0' ± 0.1'		
South entrance differential	0	1.0' - 2.0'	AVG 1.3	
Entrance weir SE1	0	depth (≥ 8')	AVG 8.1	
Collection channel velocity	0	1.5 - 4 fps	AVG	
N. Entrance PH(Bay 19)differential	0	1.0' - 2.0'	AVG 1.3	
Entrance weir NE1	0	depth (≥ 8')	AVG 8.5	
Entrance weir NE2	0	depth (≥ 8')	AVG 8.5	
JUVENILE PASSAGE			OOS after its all 49 STSs were removed by 1/24. Dewatered on 2/2/17.	
Forebay/bypass conduit differential	oos	4.0' - 5.0'	AVG #DIV/0!	
Submersible traveling screens	oos	visual inspect		
Turbine trashrack drawdown	oos	<1.5', wkly	light debris loads	
Vert barrier screen drawdown	oos	<1.5', wkly		
Spill volume	oos	N/A		
Spill pattern	oos	per FPP		
Turbine Unit Priority	oos	per FPP		
Turbine 1% Efficiency	oos	per FPP		

SMOLT MONITORING FACILITY

Operation:

SMF OOS for winter maintenance. RTS in late March with first 24 hrs sampling on 2 April 2017.

Maintenance:

5 vales where found with broken housing during an inspection of the SMF after cold weather events over this past Winter. Parts are on order and repairs will be complete before the start of the smolt monitoring season on 1 April.

A leak of the excess water pipe from the primary dewatering structure is scheduled for repairs this week and into the next week. The 6' pipe need to be shimmed and realigned with a crane.

SMF SCADA update/mods' investigation by JD Electrical underway. The SCADA "As Builts" by JD Electrical starting soon.

Research: Access letters are being sent out for this years requests

None

Fallbacks: AVG: MAX: 0 MIN: 0

Birds :

see the Avian Numbers tab.

15 Navlock (# 43 & 58 broke the week of 10/17) 6 Spillway, 6 Tower-to-Tower, 1 PH lines are missing out of 125 grid's total.

PDT will reinstall up to 15 critical, missing lines before May 2017; JD Fisheries believes that this will be sufficient for the Avian Grid to remain effective.

Avian line contractor will begin mobilizing next week(13-17 MAR) for line reinstallation

Operations:

All 49 STSs were removed by 1/24/17. JBS Collection and Bypass Channels were dewatered on 2/2 with NO FISH found. RTS is before 1 April, 2017.

JD South Fishway returned to service a day earlier then was cordinated on 3 March.

MU Gatewell Drawdowns: weekly or more frequently as necessary.

Maintenance:

JBS Tainter Gate sustained damage to its motor by the accumulated ice (which interfered with it movements.) JD Maintenance assessed the damage and found a faulty thermostat that casued the motor to operate sluggishly due to the cold temperatures

JD South aws turbine 1 repairs are completed. Inspection of turbine 2 was completed 2 March.

Turbines 1 and 2 are still in need of a major overhaul and there is no gurantee by the project on their reliability.

JD STS crane's emergency repairs were all completed by 1/31. The crane remains in risky operational condition until it's replaced with a brand new machine.

However, the necessary \$ 5 million funding for its replacement isn't yet available...

Calibration: All gauges/ sensors are within the criteria of 0.3' .

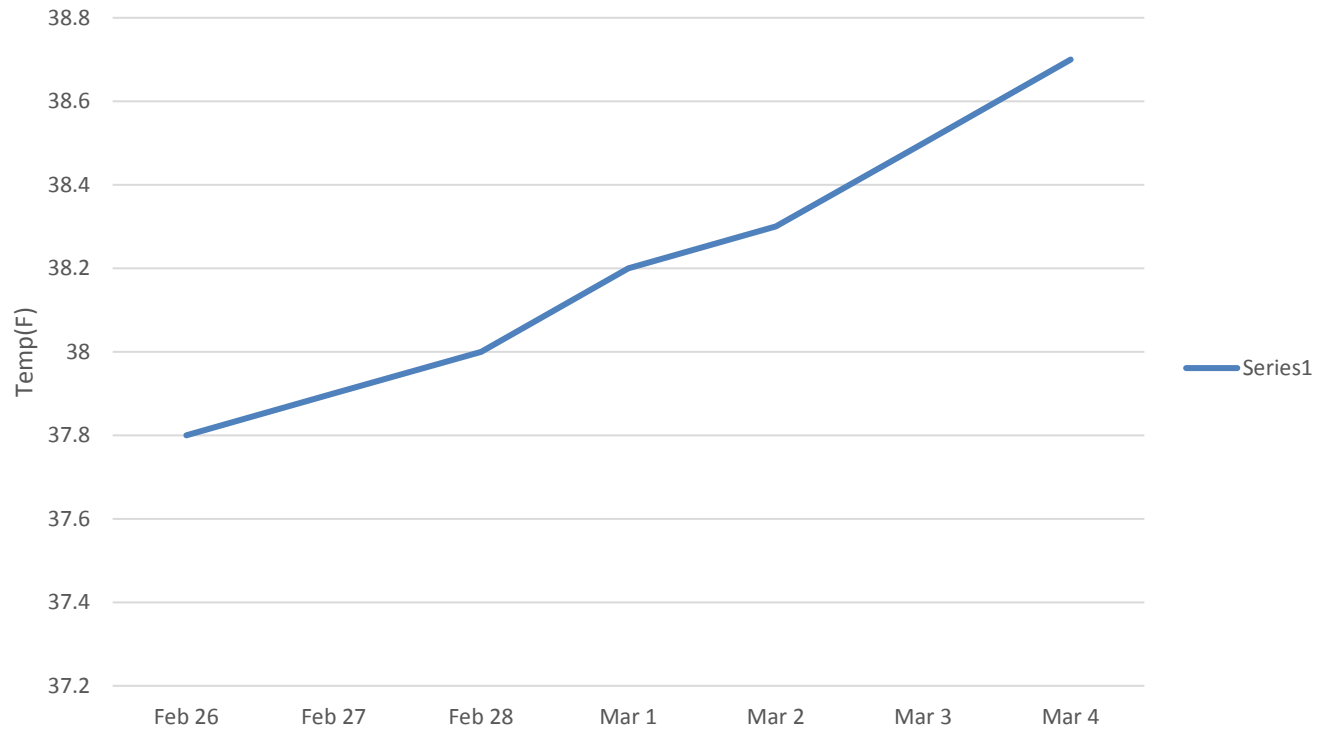
Research:

Adult PIT antennas' installation at JD South Fishway finished on 23 Feb. Both ladder antennas are temporarily supplied with power.

MOYNAHAN, KEVIN, PATRICK, 1393959157

E-Signed by MOYNAHAN, KEVIN, PATRICK, 1393959157
VERIFY authenticity with ApproveIt

JDA Water Temperature



JDA Collection Channel Velocity

Date 7-Mar-17

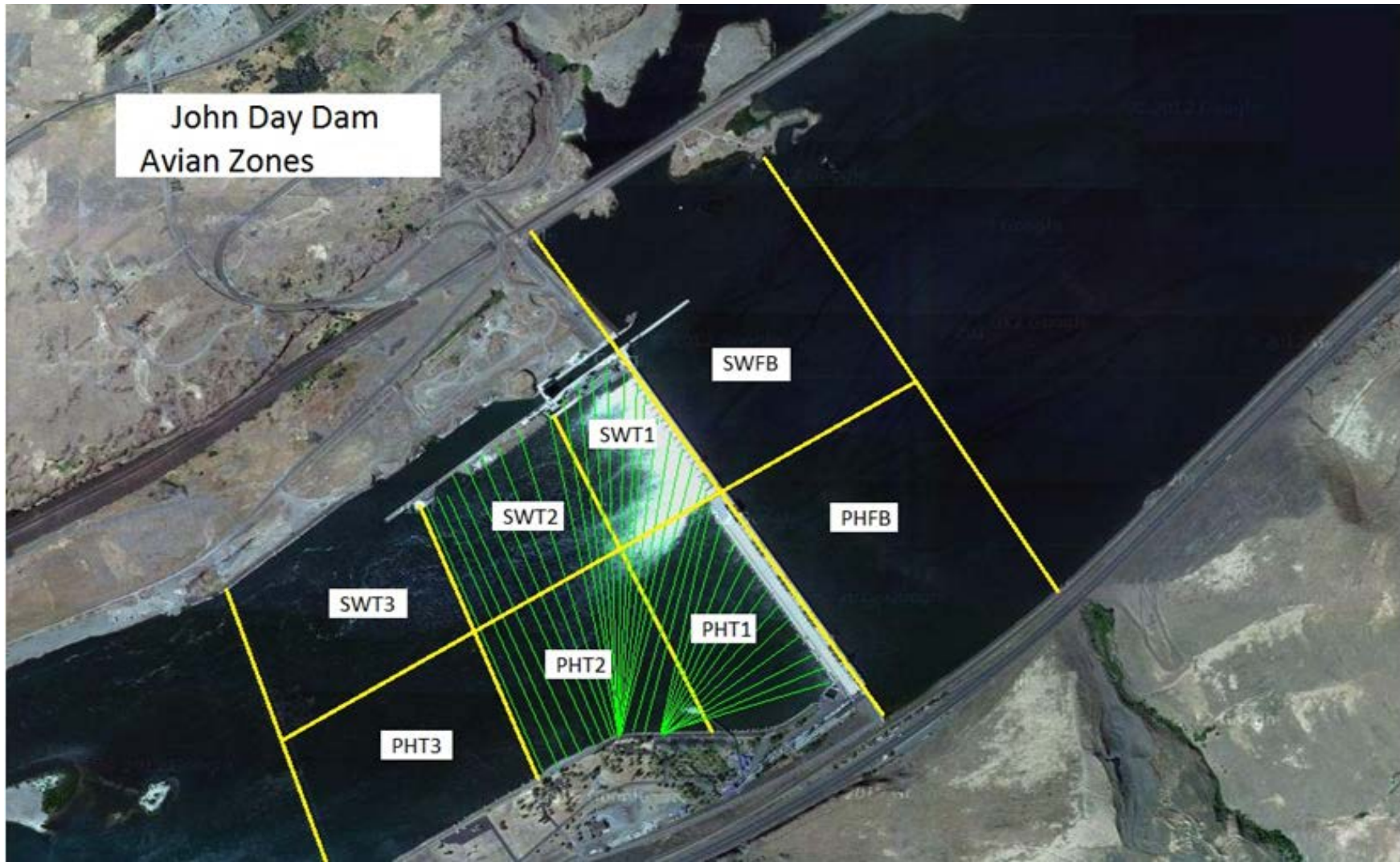
By: MDL

Bay(s)	Time	Sec.	Velocity (f/s)
0-2	1:04	64	2.81
2 - 4	2:10	130	2.73
4 - 6	3:10	190	3.00
6 - 8	4:08	248	3.10
8 - 10	5:10	310	2.90
10 - 12	6:10	370	3.00
12 - 14	7:10	430	3.00
14 - 16	8:14	494	2.81
16 - 18	9:14	554	3.00
			2.93

TW 160.5

#1 RPM	53
#2 RPM	52
#3 RPM	52

John Day Dam
Avian Zones



John Day Weekly Averages

	Temp:	Secchi:	Fallbacks
Sun	37	4.0	
Mon	37	4.0	
Tue	37	4.0	
Wed	38	4.0	
Thur	38	4.0	
Fri	38	4.0	
Sat	38	4.5	
AVG:	38	4.1	AVG
			MAX 0
			MIN 0

	NE1	NE2	S.Ent	SE1	N.Ent	JBS Diff	Bay19
Sun	oos	oos	oos	oos	1.5	oos	oos
Sun							
Mon	oos	oos	oos	oos	1.5	oos	oos
Mon							
Tues	oos	oos	oos	oos	1.6	oos	oos
Tues							
Wed	oos	oos	oos	oos	1.4	oos	oos
Wed	oos	oos	oos	oos	1.6	oos	oos
Thur	oos	oos	oos	oos	1.6	oos	oos
Thur	oos	oos	oos	oos	1.6	oos	oos
Fri	oos	oos	oos	oos	1.7	oos	oos
Fri	oos	oos	oos	oos	1.5	oos	oos
Sat	8.1	8.1	1.3	8.0	1.5	oos	1.0
Sat	8.9	8.9	1.3	8.1	1.6	oos	1.6
AVG:	8.5	8.5	1.3	8.1	1.6	#DIV/0!	1.3

JDA Bird Counts: 2/26/17 to 3/4/17

F(1): Forage AM survey F(2): Forage PM Survey NF(1): Non-Forage AM Survey NF(2): Non-Forage PM Survey

Date	Zone	Gulls				Cormorant				Caspian tern				White Pelican				Grebe				Total
		F(1)	F(2)	NF(1)	NF(2)	F(1)	F(2)	NF(1)	NF(2)	F(1)	F(2)	NF(1)	NF(2)	F(1)	F(2)	NF(1)	NF(2)	F(1)	F(2)	NF(1)	NF(2)	
26-Feb	PHFB	0	0	0	0	0	0	0	0	0	0	0	0	0	0	0	0	0	0	0	0	0
26-Feb	SWFB	0	0	0	0	0	0	0	0	0	0	0	0	0	0	0	0	0	0	0	0	0
26-Feb	PH1	0	0	0	0	0	0	0	0	0	0	0	0	0	0	0	0	0	0	0	0	0
26-Feb	PH2	0	0	0	0	0	0	0	0	0	0	0	0	0	0	0	0	0	0	0	0	0
26-Feb	PH3	0	0	0	0	0	0	0	0	0	0	0	0	0	0	0	0	0	0	0	0	0
26-Feb	SW1	0	0	0	0	0	0	0	0	0	0	0	0	0	0	0	0	0	0	0	0	0
26-Feb	SW2	0	0	0	0	0	0	0	0	0	0	0	0	0	0	0	0	0	0	0	0	0
26-Feb	SW3	0	0	0	0	0	0	0	0	0	0	0	0	0	0	0	0	0	0	0	0	0
Avg/Survey		0	0	0	0	0	0	0	0	0	0	0	0	0	0	0	0	0	0	0	0	0
27-Feb	PHFB	0	0	1	0	0	0	1	0	0	0	0	0	0	0	0	0	0	0	0	0	2
27-Feb	SWFB	0	0	0	0	0	0	0	0	0	0	0	0	0	0	0	0	0	0	0	0	0
27-Feb	PH1	0	0	0	0	0	0	0	0	0	0	0	0	0	0	0	0	0	0	0	0	0
27-Feb	PH2	0	0	0	0	0	0	0	0	0	0	0	0	0	0	0	0	0	0	0	0	0
27-Feb	PH3	0	0	0	0	0	0	0	0	0	0	0	0	0	0	0	0	0	0	0	0	0
27-Feb	SW1	0	0	0	0	0	0	1	0	0	0	0	0	0	0	0	0	0	0	0	0	1
27-Feb	SW2	0	0	0	0	0	0	0	0	0	0	0	0	0	0	0	0	0	0	0	0	0
27-Feb	SW3	0	0	0	0	0	0	0	0	0	0	0	0	0	0	0	0	0	0	0	0	0
Avg/Survey		0	1	0	1	0	1	0	0	0	0	0	0	0	0	0	0	0	0	0	0	3
28-Feb	PHFB	0	0	0	0	0	0	0	0	0	0	0	0	0	0	0	0	0	0	0	0	0
28-Feb	SWFB	0	0	11	0	0	0	0	0	0	0	0	0	0	0	0	0	0	0	0	0	11
28-Feb	PH1	0	0	0	0	0	0	0	0	0	0	0	0	0	0	0	0	0	0	0	0	0
28-Feb	PH2	0	0	0	0	0	0	0	0	0	0	0	0	0	0	0	0	0	0	0	0	0
28-Feb	PH3	0	0	0	0	0	0	0	0	0	0	0	0	0	0	0	0	0	0	0	0	0
28-Feb	SW1	0	0	0	0	0	0	0	0	0	0	0	0	0	0	0	0	0	0	0	0	0
28-Feb	SW2	0	0	0	0	0	0	0	0	0	0	0	0	0	0	0	0	0	0	0	0	0
28-Feb	SW3	0	0	0	0	0	0	0	0	0	0	0	0	0	0	0	0	0	0	0	0	0
Avg/Survey		0	6	0	0	0	0	0	0	0	0	0	0	0	0	0	0	0	0	0	0	11
1-Mar	PHFB	0	0	2	0	0	0	0	0	0	0	0	0	0	0	0	0	0	0	0	0	2
1-Mar	SWFB	0	0	0	0	0	0	0	0	0	0	0	0	0	0	0	0	0	0	0	0	0
1-Mar	PH1	2	0	0	0	0	0	0	0	0	0	0	0	0	0	0	0	0	0	0	0	2
1-Mar	PH2	0	0	0	0	0	0	0	0	0	0	0	0	0	0	0	0	0	0	0	0	0
1-Mar	PH3	0	0	0	0	0	0	0	0	0	0	0	0	0	0	0	0	0	0	0	0	0
1-Mar	SW1	0	0	0	0	0	0	0	0	0	0	0	0	0	0	0	0	0	0	0	0	0
1-Mar	SW2	0	0	0	0	0	0	0	0	0	0	0	0	0	0	0	0	0	0	0	0	0
1-Mar	SW3	0	0	0	0	0	0	0	0	0	0	0	0	0	0	0	0	0	0	0	0	0
Avg/Survey		1	1	0	0	0	0	0	0	0	0	0	0	0	0	0	0	0	0	0	0	4

JDA Bird Counts: 2/26/17 to 3/4/17

F(1): Forage AM survey F(2): Forage PM Survey NF(1): Non-Forage AM Survey NF(2): Non-Forage PM Survey

Date	Zone	Gulls				Cormorant				Caspian tern				White Pelican				Grebe				Total
		F(1)	F(2)	NF(1)	NF(2)	F(1)	F(2)	NF(1)	NF(2)	F(1)	F(2)	NF(1)	NF(2)	F(1)	F(2)	NF(1)	NF(2)	F(1)	F(2)	NF(1)	NF(2)	
2-Mar	PHFB	0	0	2	0	0	0	18	0	0	0	0	0	0	0	0	0	0	0	0	0	20
2-Mar	SWFB	0	0	0	0	0	0	0	0	0	0	0	0	0	0	0	0	0	0	0	0	0
2-Mar	PH1	1	0	0	0	0	0	0	0	0	0	0	0	0	0	0	0	0	0	0	0	1
2-Mar	PH2	0	0	0	0	0	0	0	0	0	0	0	0	0	0	0	0	0	0	0	0	0
2-Mar	PH3	0	0	0	0	0	0	0	0	0	0	0	0	0	0	0	0	0	0	0	0	0
2-Mar	SW1	0	0	0	0	0	0	0	0	0	0	0	0	0	0	0	0	0	0	0	0	0
2-Mar	SW2	0	0	0	0	0	0	0	0	0	0	0	0	0	0	0	0	0	0	0	0	0
2-Mar	SW3	0	0	0	0	0	0	0	0	0	0	0	0	0	0	0	0	0	0	0	0	0
Avg/Survey		1		1		0		9		0		0		0		0		0		0		21
3-Mar	PHFB	0	0	2	0	0	0	16	6	0	0	0	0	0	0	0	0	0	0	0	0	24
3-Mar	SWFB	0	0	0	0	0	0	0	0	0	0	0	0	0	0	0	0	0	0	0	0	0
3-Mar	PH1	0	0	0	0	0	1	0	0	0	0	0	0	0	0	0	0	0	0	0	0	1
3-Mar	PH2	0	0	0	0	0	0	0	0	0	0	0	0	0	0	0	0	0	0	0	0	0
3-Mar	PH3	0	0	0	0	0	0	0	0	0	0	0	0	0	0	0	0	0	0	0	0	0
3-Mar	SW1	0	0	0	0	0	0	0	0	0	0	0	0	0	0	0	0	0	0	0	0	0
3-Mar	SW2	0	0	0	0	0	0	0	0	0	0	0	0	0	0	0	0	0	0	0	0	0
3-Mar	SW3	0	0	0	0	0	0	0	0	0	0	0	0	0	0	0	0	0	0	0	0	0
Avg/Survey		0		1		1		11		0		0		0		0		0		0		25
4-Mar	PHFB	0	0	0	0	0	0	11	18	0	0	0	0	0	0	0	0	0	0	0	0	29
4-Mar	SWFB	0	0	0	0	0	0	0	0	0	0	0	0	0	0	0	0	0	0	0	0	0
4-Mar	PH1	0	3	0	0	0	0	0	0	0	0	0	0	0	0	0	0	0	0	0	0	3
4-Mar	PH2	0	0	0	0	0	0	0	0	0	0	0	0	0	0	0	0	0	0	0	0	0
4-Mar	PH3	0	0	0	0	0	0	0	0	0	0	0	0	0	0	0	0	0	0	0	0	0
4-Mar	SW1	0	0	0	0	0	0	0	0	0	0	0	0	0	0	0	0	0	0	0	0	0
4-Mar	SW2	0	0	0	0	0	0	0	0	0	0	0	0	0	0	0	0	0	0	0	0	0
4-Mar	SW3	0	0	0	0	0	0	0	0	0	0	0	0	0	0	0	0	0	0	0	0	0
Avg/Survey		2		0		0		15		0		0		0		0		0		0		32
Totals		Gulls				Cormorant				Caspian tern				White Pelican				Grebe				Total
		F	NF	F	NF	F	NF	F	NF	F	NF	F	NF	F	NF	F	NF	F	NF	F	NF	
Weekly Total		6	18	1	71	0	0	0	0	0	0	0	0	0	0	0	0	0	0	0	0	96
Avg/Survey		0	1	0	5	0	0	0	0	0	0	0	0	0	0	0	0	0	0	0	0	7