


FISHWAY STATUS REPORT

Date: 12/24/2017
Inspection Period: 12/18/2017 thru 12/24/2017



**US Army Corps
of Engineers**
Portland District

JOHN DAY DAM

JD/WC Project-Fisheries
P.O. Box 823
Rufus, Oregon 97050
Phone: 541-506-7860

All JD Fishways are inspected once per day during fish season, Dec. 1 - Feb. 29.
Frequent monitoring of the PLC displays in SMF Fisheries Office as necessary.

| John Day Dam | Inspections | Criteria | Total Number of Inspections: | 7 | Temperature: | F |
|-------------------------------------|-----------------|----------------|---|---------|--------------|---------|
| | Out of Criteria | Limit | | | Secchi: | 6.0 Ft. |
| NORTH FISHWAY | oos | | OOS for annual maintenance since 12/2/16. RTS - second half of January 2017. | | | |
| Exit differential | oos | ≤ 0.5' | | | | |
| Exit Control weirs | oos | High setting | High setting is normal for JDN | | | |
| Count station differential | oos | ≤ 0.3' | | | | |
| Weir crest depth (DS gauge) | oos | 1.0' ± 0.1' | | | | |
| Entrance differential | oos | 1.0' - 2.0' | AVG | #DIV/0! | | |
| SOUTH FISHWAY | | | In service with two AWS turbines; FOGs # 18 & 19 continue closed | | | |
| Exit differential | 0 | ≤ 0.5' | | | | |
| Exit Control weirs | 0 | Mid setting | Mid setting is normal for JDS | | | |
| Count station differential | 0 | ≤ 0.3' | | | | |
| Weir crest depth (US gauge) | 0 | 1.0' ± 0.1' | | | | |
| South entrance differential | 0 | 1.0' - 2.0' | AVG | 1.4 | | |
| Entrance weir SE1 | 0 | depth (≥ 8') | AVG | 8.3 | | |
| Collection channel velocity | 0 | 1.5 - 4 fps | AVG | 3.64 | | |
| N. Entrance PH(Bay 19)differential | 0 | 1.0' - 2.0' | AVG | 1.4 | | |
| Entrance weir NE1 | 0 | depth (≥ 8') | AVG | 8.8 | | |
| Entrance weir NE2 | 0 | depth (≥ 8') | AVG | 8.7 | | |
| JUVENILE PASSAGE | | | In service with STSs installed since 4/1 | | | |
| Forebay/bypass conduit differential | 0 | 4.0' - 5.0' | AVG | 4.5 | | |
| Submersible traveling screens | 0 | visual inspect | MU 3, 4 & 9 OOS because of failed STSs which can't be removed due to failed STS Crane | | | |
| Turbine trashrack drawdown | 0 | <1.5', wkly | light debris loads | | | |
| Vert barrier screen drawdown | 0 | <1.5', wkly | | | | |
| Spill volume | 0 | N/A | | | | |
| Spill pattern | 0 | per FPP | | | | |
| Turbine Unit Priority | 0 | per FPP | | | | |
| Turbine 1% Efficiency | 0 | per FPP | | | | |

SMOLT MONITORING FACILITY

Operation:

SMF OOS for winter maintenance. RTS in late March with first 24 hrs sampling on 1 April 2017.

Maintenance:

JBS expansion joint immediately downstream of Tainter Gate was found with its one side, 1/2 metal cover peeled of the wall and dangerously sticking into flow by 2 feet during SMF dewatering on 11/28. JD Structural removed the plate and JBS returned quickly to service the same day. Appears to be a recent failure. The joint will be repaired during winter outage in February/March 2017 and possibly redesigned the following winter, 2018 to increase its long term durability SMF winterization by JD Fisheries underway.

SMF SCADA update/mods' investigation by JD Electrical underway. The SCADA "As Builts" by JD Electrical starting soon.

Research:

None

Fallbacks: AVG: MAX: 0 MIN: 0

Birds :

see the Avian Numbers tab.

15 Navlock (# 43 & 58 broke the week of 10/17) 6 Spillway, 6 Tower-to-Tower, 1 PH lines are missing out of 125 grid's total.

PDT will reinstall up to 15 critical, missing lines before May 2017; JD Fisheries believes that this will be sufficient for the Avian Grid to remain effective.

All missing lines will be reinstalled in Phase 2, in the fall of 2017.

Operations:

MU 3, 4 & 9 OOS due to failed STSs. Since JD STS crane is failed/unavailable, the STSs can't be removed and MUs will remain in the forced OOS status until crane is fixed (see JD STS crane info below.)

SMF in bypass at Switch Gate for the full flow PIT tag detections since 15 September.

JD North Fishway OOS since 12/2. RTS in the second half of January 2017.

JD South Fishway in service with two out of three AWS turbines; FOGs 18 & 19 continue closed due to insufficient AWS.

MU Gatewell Drawdowns: weekly or more frequently as necessary.

Maintenance:

JD South Fishway AWS turbine 1 OOS long term due to failed pump's lower bearing. A possible, temporary "Band-Aid" repair by JD Mechanical this winter but need additional \$ 50K in special funding/ UFR.

JD STS crane continues in the failed status since late October. Its temporary/ emergency repair contract for \$ 200 K was awarded on 11/9 with a target completion of 12/21 through 12/28. The crane is old/wore out and its electronic controls are in a bad need of major overhaul at estimated cost of \$ 1.5 million.

Calibration: All gauges/ sensors are within the criteria of 0.3' .

Research:

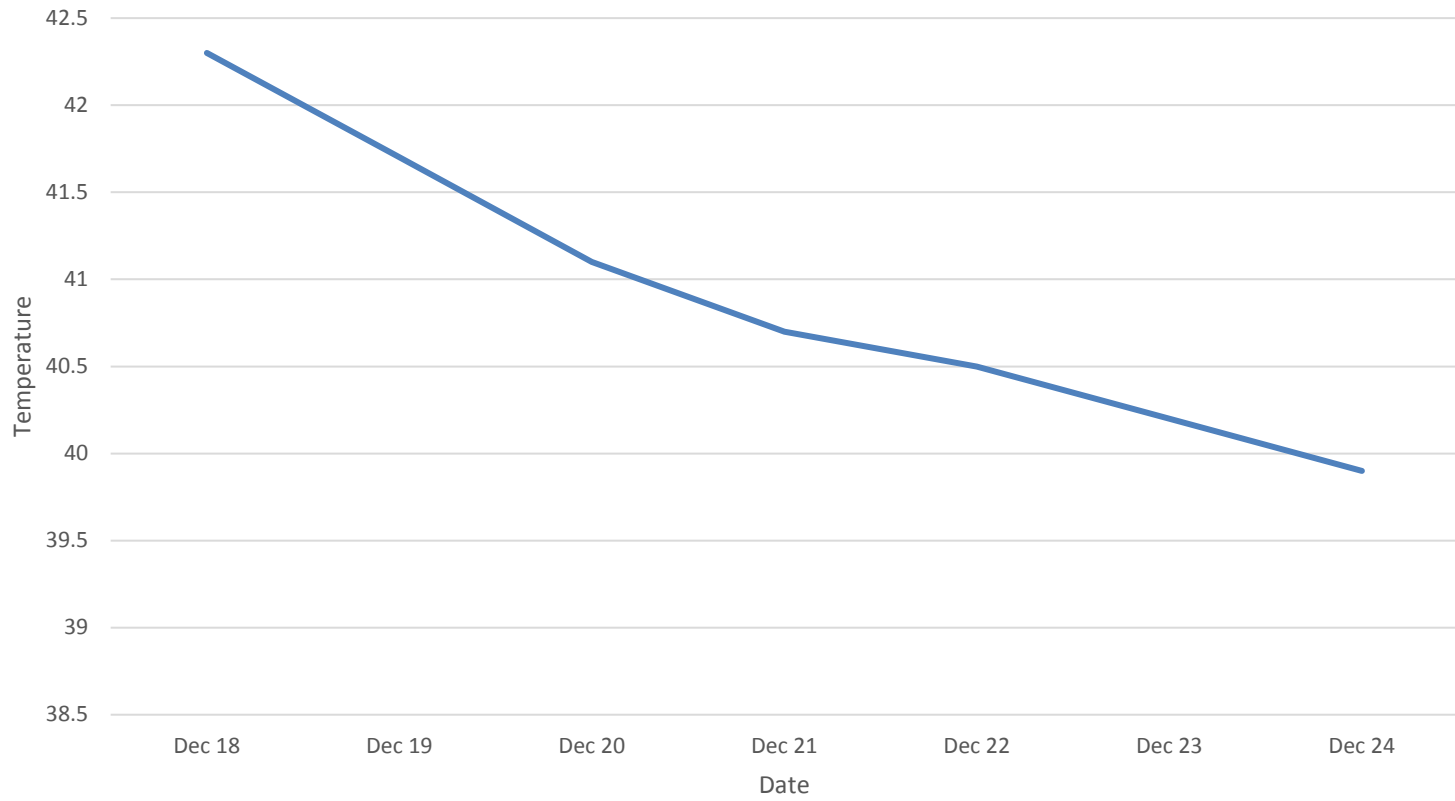
Adult PIT antennas PDT continues on the contract award for this winter's installation at both JD Fishways.

Kevin Moynahan

OPM John Day/Willow Creek Project

MOYNAHAN, KEVIN, PATRICK, 1393959157
E-Signed by MOYNAHAN, KEVIN, PATRICK, 1393959157
VERIFY authenticity with ApproveIt

JDA Water Temperature



JDA Collection Channel Velocity

| | |
|-------------|------------------|
| Date | <i>17-Nov-16</i> |
| By: | <i>MDL</i> |

| Bay(s) | Time | Sec. | Velocity (f/s) |
|----------------|-------------|-------------|-----------------------|
| <i>0-2</i> | <i>0:55</i> | <i>55</i> | <i>3.27</i> |
| <i>2 - 4</i> | <i>1:41</i> | <i>101</i> | <i>3.91</i> |
| <i>4 - 6</i> | <i>2:30</i> | <i>150</i> | <i>3.67</i> |
| <i>6 - 8</i> | <i>3:19</i> | <i>199</i> | <i>3.67</i> |
| <i>8 - 10</i> | <i>4:09</i> | <i>249</i> | <i>3.60</i> |
| <i>10 - 12</i> | <i>4:54</i> | <i>294</i> | <i>4.00</i> |
| <i>12 - 14</i> | <i>5:45</i> | <i>345</i> | <i>3.53</i> |
| <i>14 - 16</i> | <i>6:36</i> | <i>396</i> | <i>3.53</i> |
| <i>16 - 18</i> | <i>7:26</i> | <i>446</i> | <i>3.60</i> |
| | | | 3.64 |

| | |
|----|-------|
| TW | 160.6 |
|----|-------|

| | |
|--------|-----|
| #1 RPM | OOS |
| #2 RPM | 60 |
| #3 RPM | 60 |

JDA Bird Counts: 12/18/16 to 12/24/16

F(1): Forage AM survey F(2): Forage PM Survey NF(1): Non-Forage AM Survey NF(2): Non-Forage PM Survey

| Date | Zone | Gulls | | | | Cormorant | | | | Caspian tern | | | | White Pelican | | | | Grebe | | | | Total |
|-------------------|------|-----------|-----------|----------|-----------|-----------|----------|----------|----------|--------------|----------|----------|----------|---------------|----------|----------|------------|-------|------|-------|-------|-------|
| | | F(1) | F(2) | NF(1) | NF(2) | F(1) | F(2) | NF(1) | NF(2) | F(1) | F(2) | NF(1) | NF(2) | F(1) | F(2) | NF(1) | NF(2) | F(1) | F(2) | NF(1) | NF(2) | |
| 18-Dec | PHFB | 0 | 0 | 0 | 0 | 0 | 0 | 2 | 0 | 0 | 0 | 0 | 0 | 0 | 0 | 0 | 0 | 0 | 0 | 0 | 0 | 2 |
| 18-Dec | SWFB | 0 | 0 | 21 | 0 | 0 | 0 | 0 | 0 | 0 | 0 | 0 | 0 | 0 | 0 | 0 | 0 | 0 | 0 | 0 | 0 | 21 |
| 18-Dec | PH1 | 18 | 0 | 0 | 0 | 12 | 0 | 0 | 0 | 0 | 0 | 0 | 0 | 0 | 0 | 0 | 0 | 0 | 0 | 0 | 0 | 30 |
| 18-Dec | PH2 | 0 | 0 | 0 | 0 | 0 | 0 | 0 | 0 | 0 | 0 | 0 | 0 | 0 | 0 | 0 | 0 | 0 | 0 | 0 | 0 | 0 |
| 18-Dec | PH3 | 0 | 0 | 0 | 0 | 0 | 0 | 0 | 0 | 0 | 0 | 0 | 0 | 0 | 0 | 0 | 0 | 0 | 0 | 0 | 0 | 0 |
| 18-Dec | SW1 | 0 | 0 | 0 | 0 | 0 | 0 | 0 | 0 | 0 | 0 | 0 | 0 | 0 | 0 | 0 | 0 | 0 | 0 | 7 | 0 | 7 |
| 18-Dec | SW2 | 0 | 0 | 0 | 0 | 0 | 0 | 3 | 0 | 0 | 0 | 0 | 0 | 0 | 0 | 0 | 0 | 0 | 0 | 0 | 0 | 3 |
| 18-Dec | SW3 | 0 | 0 | 0 | 0 | 0 | 0 | 0 | 0 | 0 | 0 | 0 | 0 | 0 | 0 | 0 | 0 | 0 | 0 | 0 | 0 | 0 |
| Avg/Survey | | 9 | 11 | 6 | 3 | 0 | 3 | 0 | 0 | 0 | 0 | 0 | 0 | 0 | 0 | 4 | 63 | | | | | |
| 19-Dec | PHFB | 0 | 0 | 9 | 0 | 0 | 0 | 0 | 0 | 0 | 0 | 0 | 0 | 0 | 0 | 0 | 0 | 0 | 0 | 6 | 0 | 15 |
| 19-Dec | SWFB | 0 | 0 | 37 | 0 | 0 | 0 | 0 | 0 | 0 | 0 | 0 | 0 | 0 | 0 | 0 | 0 | 0 | 0 | 0 | 0 | 37 |
| 19-Dec | PH1 | 13 | 0 | 0 | 0 | 9 | 0 | 0 | 0 | 0 | 0 | 0 | 0 | 0 | 0 | 0 | 0 | 0 | 0 | 0 | 0 | 22 |
| 19-Dec | PH2 | 11 | 0 | 0 | 0 | 0 | 0 | 0 | 0 | 0 | 0 | 0 | 0 | 0 | 0 | 0 | 0 | 0 | 0 | 0 | 0 | 11 |
| 19-Dec | PH3 | 0 | 0 | 0 | 0 | 0 | 0 | 0 | 0 | 0 | 0 | 0 | 0 | 0 | 0 | 0 | 0 | 0 | 0 | 0 | 0 | 0 |
| 19-Dec | SW1 | 0 | 0 | 0 | 0 | 0 | 0 | 0 | 0 | 0 | 0 | 0 | 0 | 0 | 0 | 5 | 0 | 0 | 0 | 0 | 0 | 5 |
| 19-Dec | SW2 | 0 | 0 | 0 | 0 | 0 | 0 | 0 | 0 | 0 | 0 | 0 | 0 | 0 | 0 | 0 | 0 | 0 | 0 | 0 | 0 | 0 |
| 19-Dec | SW3 | 0 | 0 | 0 | 0 | 0 | 0 | 0 | 0 | 0 | 0 | 0 | 0 | 0 | 0 | 0 | 0 | 0 | 0 | 0 | 0 | 0 |
| Avg/Survey | | 12 | 23 | 5 | 0 | 0 | 0 | 0 | 0 | 0 | 0 | 0 | 0 | 0 | 3 | 3 | 90 | | | | | |
| 20-Dec | PHFB | 0 | 0 | 42 | 0 | 0 | 0 | 5 | 0 | 0 | 0 | 0 | 0 | 0 | 0 | 0 | 0 | 0 | 0 | 5 | 0 | 52 |
| 20-Dec | SWFB | 0 | 0 | 8 | 0 | 0 | 0 | 0 | 0 | 0 | 0 | 0 | 0 | 0 | 0 | 0 | 0 | 0 | 0 | 0 | 0 | 8 |
| 20-Dec | PH1 | 8 | 0 | 0 | 0 | 3 | 0 | 0 | 0 | 0 | 0 | 0 | 0 | 0 | 0 | 0 | 0 | 0 | 0 | 0 | 0 | 11 |
| 20-Dec | PH2 | 0 | 0 | 0 | 0 | 0 | 0 | 0 | 0 | 0 | 0 | 0 | 0 | 0 | 0 | 0 | 0 | 0 | 0 | 0 | 0 | 0 |
| 20-Dec | PH3 | 2 | 0 | 0 | 0 | 0 | 0 | 0 | 0 | 0 | 0 | 0 | 0 | 0 | 0 | 0 | 0 | 0 | 0 | 0 | 0 | 2 |
| 20-Dec | SW1 | 0 | 0 | 0 | 0 | 0 | 0 | 1 | 0 | 0 | 0 | 0 | 0 | 0 | 0 | 0 | 0 | 0 | 0 | 0 | 0 | 1 |
| 20-Dec | SW2 | 0 | 0 | 0 | 0 | 0 | 0 | 24 | 0 | 0 | 0 | 0 | 0 | 0 | 0 | 0 | 0 | 0 | 0 | 0 | 0 | 24 |
| 20-Dec | SW3 | 0 | 0 | 0 | 0 | 0 | 0 | 0 | 0 | 0 | 0 | 0 | 0 | 0 | 0 | 0 | 0 | 0 | 0 | 0 | 0 | 0 |
| Avg/Survey | | 5 | 25 | 2 | 15 | 0 | 0 | 0 | 0 | 0 | 0 | 0 | 0 | 0 | 0 | 3 | 98 | | | | | |
| 21-Dec | PHFB | 0 | 0 | 8 | 0 | 0 | 0 | 6 | 0 | 0 | 0 | 0 | 0 | 0 | 0 | 0 | 0 | 0 | 0 | 9 | 0 | 23 |
| 21-Dec | SWFB | 0 | 0 | 113 | 0 | 0 | 0 | 0 | 0 | 0 | 0 | 0 | 0 | 0 | 0 | 0 | 0 | 0 | 0 | 0 | 0 | 113 |
| 21-Dec | PH1 | 4 | 0 | 1 | 0 | 0 | 0 | 1 | 0 | 0 | 0 | 0 | 0 | 0 | 0 | 0 | 0 | 0 | 0 | 6 | 0 | 12 |
| 21-Dec | PH2 | 0 | 0 | 0 | 0 | 0 | 0 | 0 | 0 | 0 | 0 | 0 | 0 | 0 | 0 | 0 | 0 | 0 | 0 | 0 | 0 | 0 |
| 21-Dec | PH3 | 0 | 0 | 0 | 0 | 0 | 0 | 0 | 0 | 0 | 0 | 0 | 0 | 0 | 0 | 0 | 0 | 0 | 0 | 0 | 0 | 0 |
| 21-Dec | SW1 | 0 | 0 | 0 | 0 | 0 | 0 | 0 | 0 | 0 | 0 | 0 | 0 | 0 | 0 | 0 | 0 | 0 | 0 | 0 | 0 | 0 |
| 21-Dec | SW2 | 0 | 0 | 0 | 0 | 0 | 0 | 5 | 0 | 0 | 0 | 0 | 0 | 0 | 0 | 0 | 0 | 0 | 0 | 0 | 0 | 5 |
| 21-Dec | SW3 | 0 | 0 | 0 | 0 | 0 | 0 | 0 | 0 | 0 | 0 | 0 | 0 | 0 | 0 | 0 | 0 | 0 | 0 | 0 | 0 | 0 |
| Avg/Survey | | 2 | 61 | 0 | 6 | 0 | 0 | 0 | 0 | 0 | 0 | 0 | 0 | 0 | 0 | 8 | 153 | | | | | |

JDA Bird Counts: 12/18/16 to 12/24/16

F(1): Forage AM survey F(2): Forage PM Survey NF(1): Non-Forage AM Survey NF(2): Non-Forage PM Survey

| Date | Zone | Gulls | | | | Cormorant | | | | Caspian tern | | | | White Pelican | | | | Grebe | | | | Total |
|---------------------|------|-----------|------------|-----------|------------|-----------|----------|----------|----------|--------------|----------|----------|----------|---------------|-----------|----------|------------|------------|------|-------|-------|-------|
| | | F(1) | F(2) | NF(1) | NF(2) | F(1) | F(2) | NF(1) | NF(2) | F(1) | F(2) | NF(1) | NF(2) | F(1) | F(2) | NF(1) | NF(2) | F(1) | F(2) | NF(1) | NF(2) | |
| 22-Dec | PHFB | 0 | 0 | 23 | 0 | 0 | 0 | 8 | 0 | 0 | 0 | 0 | 0 | 0 | 0 | 0 | 0 | 0 | 0 | 7 | 0 | 38 |
| 22-Dec | SWFB | 0 | 0 | 0 | 0 | 0 | 0 | 0 | 0 | 0 | 0 | 0 | 0 | 0 | 0 | 0 | 0 | 0 | 0 | 0 | 0 | 0 |
| 22-Dec | PH1 | 5 | 0 | 1 | 0 | 3 | 0 | 1 | 0 | 0 | 0 | 0 | 0 | 0 | 0 | 0 | 0 | 0 | 0 | 5 | 0 | 15 |
| 22-Dec | PH2 | 1 | 0 | 0 | 0 | 0 | 0 | 0 | 0 | 0 | 0 | 0 | 0 | 0 | 0 | 0 | 0 | 0 | 0 | 0 | 0 | 1 |
| 22-Dec | PH3 | 1 | 0 | 0 | 0 | 0 | 0 | 0 | 0 | 0 | 0 | 0 | 0 | 0 | 0 | 0 | 0 | 0 | 0 | 0 | 0 | 1 |
| 22-Dec | SW1 | 0 | 0 | 0 | 0 | 0 | 0 | 0 | 0 | 0 | 0 | 0 | 0 | 0 | 0 | 0 | 0 | 0 | 0 | 0 | 0 | 0 |
| 22-Dec | SW2 | 0 | 0 | 1 | 0 | 0 | 0 | 47 | 0 | 0 | 0 | 0 | 0 | 0 | 0 | 0 | 0 | 0 | 0 | 0 | 0 | 48 |
| 22-Dec | SW3 | 0 | 0 | 1 | 0 | 0 | 0 | 0 | 0 | 0 | 0 | 0 | 0 | 0 | 0 | 0 | 0 | 0 | 0 | 0 | 0 | 1 |
| Avg/Survey | | 4 | 13 | 2 | 28 | 0 | 0 | 0 | 0 | 0 | 0 | 0 | 0 | 0 | 0 | 6 | 104 | | | | | |
| 23-Dec | PHFB | 0 | 0 | 1 | 0 | 0 | 0 | 0 | 0 | 0 | 0 | 0 | 0 | 0 | 0 | 0 | 0 | 0 | 0 | 0 | 0 | 1 |
| 23-Dec | SWFB | 0 | 0 | 227 | 0 | 0 | 0 | 7 | 0 | 0 | 0 | 0 | 0 | 0 | 0 | 0 | 0 | 0 | 0 | 5 | 0 | 239 |
| 23-Dec | PH1 | 0 | 0 | 7 | 0 | 0 | 0 | 3 | 0 | 0 | 0 | 0 | 0 | 0 | 0 | 0 | 0 | 0 | 0 | 0 | 0 | 10 |
| 23-Dec | PH2 | 6 | 0 | 0 | 0 | 0 | 0 | 0 | 0 | 0 | 0 | 0 | 0 | 0 | 0 | 0 | 0 | 0 | 0 | 0 | 0 | 6 |
| 23-Dec | PH3 | 0 | 0 | 0 | 0 | 0 | 0 | 3 | 0 | 0 | 0 | 0 | 0 | 0 | 0 | 0 | 0 | 0 | 0 | 0 | 0 | 3 |
| 23-Dec | SW1 | 0 | 0 | 0 | 0 | 0 | 0 | 0 | 0 | 0 | 0 | 0 | 0 | 0 | 0 | 0 | 0 | 0 | 0 | 0 | 0 | 0 |
| 23-Dec | SW2 | 0 | 0 | 0 | 0 | 0 | 0 | 37 | 0 | 0 | 0 | 0 | 0 | 0 | 0 | 0 | 0 | 0 | 0 | 0 | 0 | 37 |
| 23-Dec | SW3 | 0 | 0 | 0 | 0 | 0 | 0 | 0 | 0 | 0 | 0 | 0 | 0 | 0 | 0 | 0 | 0 | 0 | 0 | 0 | 0 | 0 |
| Avg/Survey | | 3 | 118 | 0 | 25 | 0 | 0 | 0 | 0 | 0 | 0 | 0 | 0 | 0 | 0 | 3 | 296 | | | | | |
| 24-Dec | PHFB | 0 | 0 | 4 | 0 | 0 | 0 | 0 | 0 | 0 | 0 | 0 | 0 | 0 | 0 | 0 | 0 | 0 | 0 | 0 | 0 | 4 |
| 24-Dec | SWFB | 0 | 0 | 117 | 0 | 0 | 0 | 15 | 0 | 0 | 0 | 0 | 0 | 0 | 0 | 0 | 0 | 0 | 0 | 4 | 0 | 136 |
| 24-Dec | PH1 | 11 | 0 | 0 | 0 | 4 | 0 | 0 | 0 | 0 | 0 | 0 | 0 | 0 | 0 | 0 | 0 | 0 | 0 | 0 | 0 | 15 |
| 24-Dec | PH2 | 2 | 0 | 0 | 0 | 0 | 0 | 0 | 0 | 0 | 0 | 0 | 0 | 0 | 0 | 0 | 0 | 0 | 0 | 0 | 0 | 2 |
| 24-Dec | PH3 | 0 | 0 | 0 | 0 | 0 | 0 | 0 | 0 | 0 | 0 | 0 | 0 | 0 | 0 | 0 | 0 | 0 | 0 | 0 | 0 | 0 |
| 24-Dec | SW1 | 2 | 0 | 0 | 0 | 0 | 0 | 0 | 0 | 0 | 0 | 0 | 0 | 0 | 0 | 0 | 0 | 0 | 0 | 0 | 0 | 2 |
| 24-Dec | SW2 | 0 | 0 | 0 | 0 | 0 | 0 | 8 | 0 | 0 | 0 | 0 | 0 | 0 | 0 | 0 | 0 | 0 | 0 | 0 | 0 | 8 |
| 24-Dec | SW3 | 0 | 0 | 0 | 0 | 0 | 0 | 0 | 0 | 0 | 0 | 0 | 0 | 0 | 0 | 0 | 0 | 0 | 0 | 0 | 0 | 0 |
| Avg/Survey | | 8 | 61 | 2 | 12 | 0 | 0 | 0 | 0 | 0 | 0 | 0 | 0 | 0 | 0 | 2 | 167 | | | | | |
| Totals | | Gulls | | | | Cormorant | | | | Caspian tern | | | | White Pelican | | | | Grebe | | | | Total |
| | | F | NF | F | NF | F | NF | F | NF | F | NF | F | NF | F | NF | F | NF | F | NF | | | |
| Weekly Total | | 84 | 621 | 31 | 176 | 0 | 0 | 0 | 0 | 0 | 0 | 0 | 0 | 5 | 54 | | | 971 | | | | |
| Avg/Survey | | 6 | 44 | 2 | 13 | 0 | 0 | 0 | 0 | 0 | 0 | 0 | 0 | 0 | 4 | | | 69 | | | | |

John Day Dam
Avian Zones



John Day Weekly Averages

| | Temp: | Secchi: | Fallbacks |
|------|----------------------|----------|--------------------------|
| Sun | <input type="text"/> | 6.0 | <input type="text"/> |
| Mon | <input type="text"/> | 6.0 | <input type="text"/> |
| Tue | <input type="text"/> | 6.0 | <input type="text"/> |
| Wed | <input type="text"/> | 6.0 | <input type="text"/> |
| Thur | <input type="text"/> | 6.0 | <input type="text"/> |
| Fri | <input type="text"/> | 6.0 | <input type="text"/> |
| Sat | <input type="text"/> | 6.0 | <input type="text"/> |
| AVG: | <input type="text"/> | AVG: 6.0 | AVG <input type="text"/> |
| | | | MAX 0 |
| | | | MIN 0 |

| | NE1 | NE2 | S.Ent | SE1 | N.Ent | JBS Diff | Bay19 |
|------|-----|-----|-------|-----|---------|----------|-------|
| Sun | 8.7 | 8.7 | 1.3 | 8.4 | oos | 4.4 | 1.5 |
| Sun | | | | | | | |
| Mon | 9.0 | 9.0 | 1.1 | 8.1 | oos | 4.5 | 1.2 |
| Mon | | | | | | | |
| Tues | 8.7 | 8.7 | 1.3 | 8.3 | oos | 4.6 | 1.5 |
| Tues | | | | | | | |
| Wed | 8.6 | 8.6 | 1.4 | 8.4 | oos | 4.6 | 1.6 |
| Wed | | | | | | | |
| Thur | 8.8 | 8.6 | 1.5 | 8.2 | oos | 4.6 | 1.2 |
| Thur | | | | | | | |
| Fri | 8.4 | 8.5 | 1.5 | 8.2 | oos | 4.5 | 1.5 |
| Fri | | | | | | | |
| Sat | 9.1 | 9.1 | 1.4 | 8.2 | oos | 4.6 | 1.4 |
| Sat | | | | | oos | | |
| AVG: | 8.8 | 8.7 | 1.4 | 8.3 | #DIV/0! | 4.5 | 1.4 |