


FISHWAY STATUS REPORT

Date: 6/18/2016
 Inspection Period: 6/12/2016 thru 6/18/2016



**US Army Corps
of Engineers**
Portland District

JOHN DAY DAM

JD/WC Project-Fisheries
 P.O. Box 823
 Rufus, Oregon 97050
 Phone: 541-506-7860

All JD Fishways are inspected twice per day during fish season, Mar. 1 - Nov. 30.
 Frequent monitoring of the PLC displays in SMF Fisheries Office as necessary.

| John Day Dam | Inspections | Criteria | Total Number of Inspections: | 14 | Temperature: | 64 F |
|-------------------------------------|-----------------|----------------|--|------|--------------|------|
| | Out of Criteria | Limit | Secchi: 5.6 Ft. | | | |
| NORTH FISHWAY | | | In service; 5 AWS pumps available; # 5 OOS due to oil leak | | | |
| Exit differential | 0 | ≤ 0.5' | | | | |
| Exit Control weirs | 0 | High setting | Mid setting since 6/15 necessary to reduce sockeye fall back through CS. | | | |
| Count station differential | 0 | ≤ 0.3' | | | | |
| Weir crest depth (DS gauge) | 0 | 1.3' ± 0.1' | Changed to SHAD passage criterion of 1.3' on 6/01 PM | | | |
| Entrance differential | 0 | 1.0' - 2.0' | AVG | 1.5 | | |
| SOUTH FISHWAY | | | In service with two AWS turbines; FOGs # 18 & 19 continue closed. | | | |
| Exit differential | 0 | ≤ 0.5' | | | | |
| Exit Control weirs | 0 | Mid setting | Mid setting is normal for JDS | | | |
| Count station differential | 0 | ≤ 0.3' | | | | |
| Weir crest depth (US gauge) | 0 | 1.3' ± 0.1' | Changed to SHAD passage criterion of 1.3' on 6/01 AM | | | |
| South entrance differential | 0 | 1.0' - 2.0' | AVG | 1.5 | | |
| Entrance weir SE1 | 0 | depth (≥ 8') | AVG | 8.5 | | |
| Collection channel velocity | 0 | 1.5 - 4 fps | AVG | 3.30 | | |
| N. Entrance PH(Bay 19)differential | 0 | 1.0' - 2.0' | AVG | 1.5 | | |
| Entrance weir NE1 | 0 | depth (≥ 8') | AVG | 8.2 | | |
| Entrance weir NE2 | 0 | depth (≥ 8') | AVG | 8.2 | | |
| JUVENILE PASSAGE | | | In service with STSs installed since 4/1 | | | |
| Forebay/bypass conduit differential | 0 | 4.0' - 5.0' | AVG | 4.6 | | |
| Submersible traveling screens | 0 | visual inspect | STS camera inspection: VBS MU 16 found with torn mesh on 6/14/16; MU oos until repaired. | | | |
| Turbine trashrack drawdown | 0 | <1.5', wkly | Monthly raking per FPP requirements during the week of 5/23, moderate debris loads | | | |
| Vert barrier screen drawdown | 0 | <1.5', wkly | | | | |
| Spill volume | 0 | N/A | 2016 Spill season started on 4/10/16 at 0001; TSWs in bays 18 & 19 in service. | | | |
| Spill pattern | 0 | per FPP | | | | |
| Turbine Unit Priority | 0 | per FPP | | | | |
| Turbine 1% Efficiency | 0 | per FPP | | | | |

SMOLT MONITORING FACILITY

Operation:

In service since 1 April. Every other day sampling by PSMFC biologists in 2016; JD Fisheries crew moves the Switch Gate between sample-bypass modes daily AM.

Maintenance:

No maintenance issues to report. PDS screen cleaners have been working well.

SMF SCADA's investigation by JD Electrical underway. There is a current UFR of \$ 150 K, for the SCADA update's P&S.

Research:

None

Fallbacks: AVG: 37 MAX: 53 MIN: 28

Birds :

see the Avian Numbers tab. We report all species and locations, but in reality only gulls in the tailrace BRZ are relevant at JD.

12 Navlock, 3 Spillway, 3 Tower-to-Tower (# 12 broke on 6/15/16) lines are missing out of 125 grid's total; no funding is available to reinstall for 2016 season. UFR for \$ 250K is pending. No increase in gull predation due to the missing lines/large gaps in the tailrace Avian Array so far.

New in April 2016, the JD Avian Lines Improvements' PDT will assess their reliability and design a better/ cheaper methods for their maintenance.

USDA boat avian hazing downstream of JD Tailrace BRZ continues since 4/29/16.

Operations:

JBS and SMF in regular operation since 1 April as required by FPP.

JD North fishway has been meeting all FPP criteria since 1/5/16.

JD South Fishway in service with two out of three AWS turbines; FOGs 18 & 19 continue closed due to insufficient AWS.

MU Gatewell Drawdowns: Twice a week or more frequently as necessary.

Maintenance:

MU 14 dewatering: scroll case on 6/13- 1 SMB & draft tube on 6/14- 7 small sturgeon and 12 cats; all released in excellent condition.

MU 16 VBS found with torn mesh during camera inspection on 6/14/16. MU waiting for bulkheads to dewater and will be OOS until repaired.

JD North Fishway Pump # 5 OOS due to gearbox's oil leak; it will be repaired soon

JD South Fishway AWS turbine 1 OOS long term due to failed pump's lower bearing. Received \$100K UFR for AWS pumps' repair on 5/18.

Calibration: All gauges/ sensors are within the criteria of 0.3' .

Research:

Washington F&W dam angling crew's NPM (pikeminnow) removal from JD PH tailrace continues since 5/10/16. 797 fish removed by 6/12/16.

JD Fisheries coordinating with NW Tribes for adult lamprey trapping and other lamprey research.

Adult Fish Counting by Normandeau Associates continues since 1 April 2016.

Adult PIT antennas PDT developing designs for the next winter outage's installation.

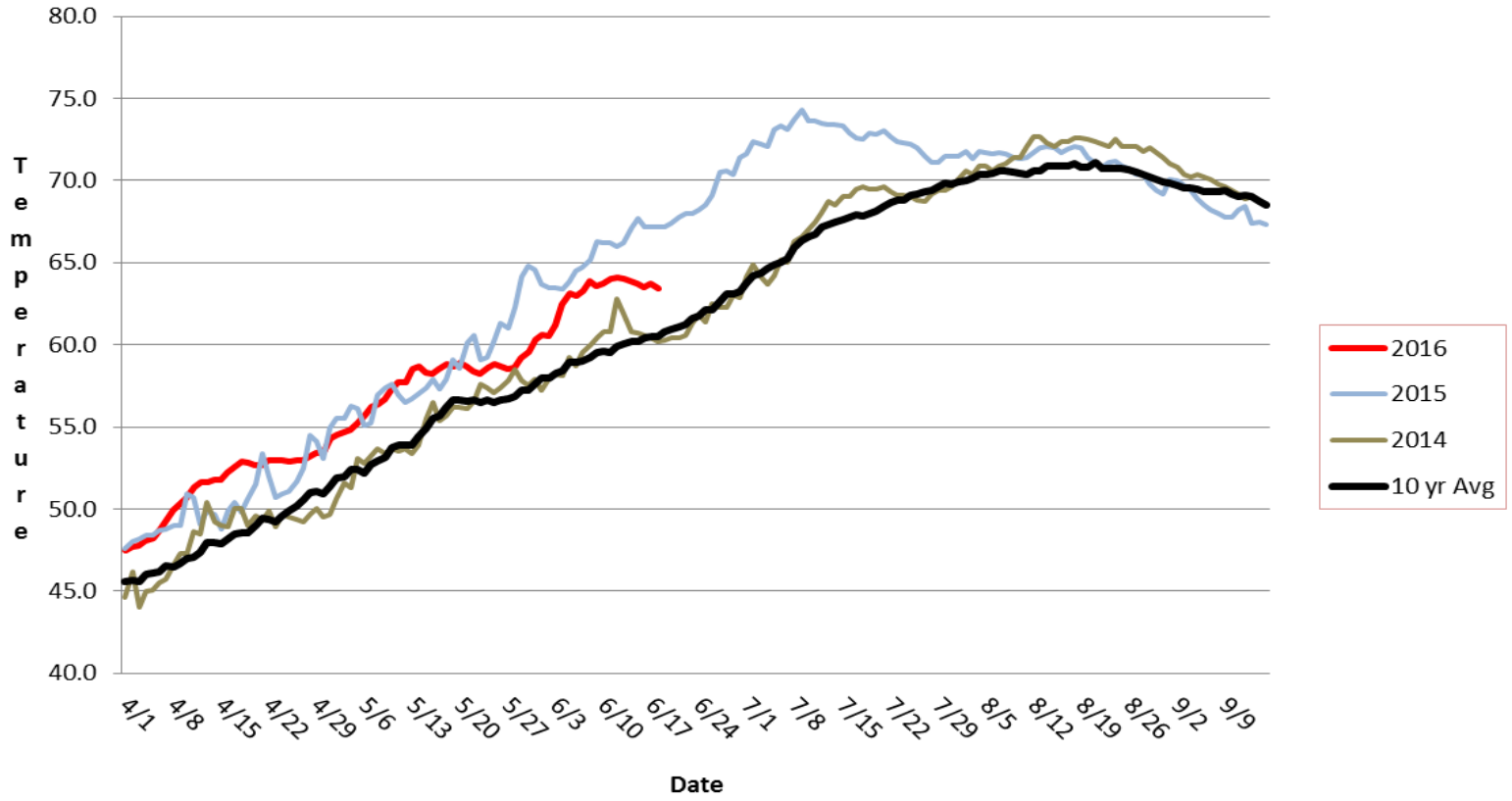
Kevin Moynahan
OPM John Day/Willow Creek Project

MOYNAHAN, KEVIN, PATRICK, 1393959157

E-Signed by MOYNAHAN, KEVIN, PATRICK, 1393959157
VERIFY authenticity with ApproveIt



JDA SMF Water Temp



A Collection Channel Velocity

| | |
|------|-----------|
| Date | 18-Jun-16 |
| By: | peet |

| Bay(s) | Time | Sec. | Velocity (f/s) |
|---------|------|------|----------------|
| 0-2 | 1:15 | 75 | 2.40 |
| 2 - 4 | 2:12 | 132 | 3.16 |
| 4 - 6 | 3:07 | 187 | 3.27 |
| 6 - 8 | 4:01 | 241 | 3.33 |
| 8 - 10 | 4:52 | 292 | 3.53 |
| 10 - 12 | 5:40 | 340 | 3.75 |
| 12 - 14 | 6:35 | 395 | 3.27 |
| 14 - 16 | 7:23 | 443 | 3.75 |
| 16 - 18 | 8:18 | 498 | 3.27 |
| | | | 3.30 |

TW 161.3
#1 RPM 59
#2 RPM 60

JDA Bird Counts: 6/12/16 to 6/18/16

F(1): Forage AM survey F(2): Forage PM Survey NF(1): Non-Forage AM Survey NF(2): Non-Forage PM Survey

| Date | Zone | Gulls | | | | Cormorant | | | | Caspian tern | | | | White Pelican | | | | Grebe | | | | Total |
|------------|------|-------|------|-------|-------|-----------|------|-------|-------|--------------|------|-------|-------|---------------|------|-------|-------|-------|------|-------|-------|-------|
| | | F(1) | F(2) | NF(1) | NF(2) | F(1) | F(2) | NF(1) | NF(2) | F(1) | F(2) | NF(1) | NF(2) | F(1) | F(2) | NF(1) | NF(2) | F(1) | F(2) | NF(1) | NF(2) | |
| 12-Jun | PHFB | 12 | 8 | 0 | 0 | 0 | 0 | 0 | 0 | 0 | 0 | 0 | 0 | 0 | 0 | 0 | 0 | 12 | 11 | 0 | 0 | 43 |
| 12-Jun | SWFB | 0 | 0 | 0 | 0 | 0 | 0 | 0 | 0 | 0 | 0 | 0 | 0 | 0 | 0 | 0 | 0 | 0 | 0 | 0 | 0 | 0 |
| 12-Jun | PH1 | 12 | 5 | 0 | 0 | 0 | 0 | 0 | 0 | 0 | 0 | 0 | 0 | 4 | 0 | 0 | 0 | 0 | 0 | 0 | 0 | 21 |
| 12-Jun | PH2 | 0 | 3 | 0 | 0 | 0 | 0 | 0 | 0 | 0 | 0 | 0 | 0 | 2 | 0 | 0 | 0 | 0 | 0 | 0 | 0 | 5 |
| 12-Jun | PH3 | 1 | 2 | 0 | 0 | 0 | 0 | 0 | 0 | 0 | 0 | 0 | 0 | 0 | 0 | 0 | 0 | 0 | 0 | 0 | 0 | 3 |
| 12-Jun | SW1 | 0 | 0 | 0 | 0 | 0 | 0 | 0 | 0 | 0 | 0 | 0 | 0 | 0 | 0 | 0 | 0 | 0 | 0 | 0 | 0 | 0 |
| 12-Jun | SW2 | 0 | 0 | 0 | 0 | 0 | 0 | 0 | 0 | 0 | 0 | 0 | 0 | 0 | 0 | 0 | 0 | 0 | 0 | 0 | 0 | 0 |
| 12-Jun | SW3 | 0 | 0 | 0 | 0 | 0 | 0 | 0 | 0 | 0 | 0 | 0 | 0 | 3 | 0 | 0 | 0 | 0 | 0 | 0 | 0 | 3 |
| Avg/Survey | | 22 | | 0 | | 0 | | 0 | | 0 | | 0 | | 5 | | 0 | | 12 | | 0 | | 75 |
| 13-Jun | PHFB | 0 | 0 | 1 | 4 | 0 | 0 | 0 | 0 | 0 | 0 | 0 | 0 | 0 | 0 | 0 | 0 | 12 | 8 | 0 | 0 | 25 |
| 13-Jun | SWFB | 0 | 0 | 0 | 0 | 0 | 0 | 0 | 0 | 0 | 0 | 0 | 0 | 0 | 0 | 0 | 0 | 0 | 0 | 0 | 0 | 0 |
| 13-Jun | PH1 | 0 | 0 | 0 | 0 | 0 | 0 | 0 | 0 | 0 | 0 | 0 | 0 | 0 | 0 | 0 | 0 | 0 | 0 | 0 | 0 | 0 |
| 13-Jun | PH2 | 5 | 7 | 0 | 0 | 0 | 0 | 0 | 0 | 0 | 0 | 0 | 0 | 15 | 5 | 0 | 0 | 0 | 0 | 0 | 0 | 32 |
| 13-Jun | PH3 | 0 | 2 | 0 | 0 | 0 | 0 | 0 | 0 | 0 | 0 | 0 | 0 | 5 | 0 | 0 | 0 | 0 | 0 | 0 | 0 | 7 |
| 13-Jun | SW1 | 0 | 0 | 0 | 0 | 0 | 0 | 0 | 0 | 0 | 0 | 0 | 0 | 0 | 0 | 0 | 0 | 0 | 0 | 0 | 0 | 0 |
| 13-Jun | SW2 | 0 | 0 | 0 | 0 | 0 | 0 | 0 | 0 | 0 | 0 | 0 | 0 | 2 | 0 | 0 | 0 | 0 | 0 | 0 | 0 | 2 |
| 13-Jun | SW3 | 0 | 0 | 0 | 0 | 0 | 0 | 0 | 0 | 0 | 0 | 0 | 0 | 3 | 1 | 0 | 0 | 0 | 0 | 0 | 0 | 4 |
| Avg/Survey | | 7 | | 3 | | 0 | | 0 | | 0 | | 0 | | 16 | | 0 | | 10 | | 0 | | 70 |
| 14-Jun | PHFB | 0 | 0 | 2 | 4 | 0 | 0 | 0 | 0 | 0 | 0 | 0 | 0 | 0 | 0 | 0 | 0 | 9 | 17 | 0 | 0 | 32 |
| 14-Jun | SWFB | 0 | 0 | 0 | 0 | 0 | 0 | 0 | 0 | 0 | 0 | 0 | 0 | 0 | 0 | 0 | 0 | 0 | 0 | 0 | 0 | 0 |
| 14-Jun | PH1 | 0 | 0 | 0 | 0 | 0 | 0 | 0 | 0 | 0 | 0 | 0 | 0 | 0 | 0 | 0 | 0 | 0 | 0 | 0 | 0 | 0 |
| 14-Jun | PH2 | 4 | 16 | 0 | 0 | 0 | 0 | 0 | 0 | 0 | 0 | 0 | 0 | 5 | 2 | 0 | 0 | 0 | 0 | 0 | 0 | 27 |
| 14-Jun | PH3 | 0 | 0 | 0 | 0 | 0 | 0 | 0 | 0 | 0 | 0 | 0 | 0 | 1 | 2 | 0 | 0 | 0 | 0 | 0 | 0 | 3 |
| 14-Jun | SW1 | 0 | 0 | 0 | 0 | 0 | 0 | 0 | 0 | 0 | 0 | 0 | 0 | 0 | 0 | 0 | 0 | 0 | 0 | 0 | 0 | 0 |
| 14-Jun | SW2 | 0 | 0 | 0 | 0 | 0 | 0 | 0 | 0 | 0 | 0 | 0 | 0 | 0 | 0 | 0 | 0 | 0 | 0 | 0 | 0 | 0 |
| 14-Jun | SW3 | 0 | 6 | 0 | 0 | 0 | 0 | 0 | 0 | 0 | 0 | 0 | 0 | 2 | 3 | 0 | 0 | 0 | 0 | 0 | 0 | 11 |
| Avg/Survey | | 13 | | 3 | | 0 | | 0 | | 0 | | 0 | | 8 | | 0 | | 13 | | 0 | | 73 |
| 15-Jun | PHFB | 0 | 0 | 10 | 5 | 0 | 0 | 0 | 0 | 0 | 0 | 0 | 0 | 2 | 1 | 0 | 0 | 22 | 7 | 0 | 0 | 47 |
| 15-Jun | SWFB | 0 | 0 | 0 | 0 | 0 | 0 | 0 | 0 | 0 | 0 | 0 | 0 | 0 | 0 | 0 | 0 | 0 | 0 | 0 | 0 | 0 |
| 15-Jun | PH1 | 0 | 3 | 0 | 0 | 0 | 0 | 0 | 0 | 0 | 0 | 0 | 0 | 0 | 4 | 0 | 0 | 0 | 0 | 0 | 0 | 7 |
| 15-Jun | PH2 | 0 | 0 | 0 | 0 | 0 | 0 | 0 | 0 | 0 | 0 | 0 | 0 | 0 | 0 | 0 | 0 | 0 | 0 | 0 | 0 | 0 |
| 15-Jun | PH3 | 0 | 0 | 0 | 0 | 0 | 0 | 0 | 0 | 0 | 0 | 0 | 0 | 0 | 0 | 0 | 0 | 0 | 0 | 0 | 0 | 0 |
| 15-Jun | SW1 | 4 | 0 | 0 | 0 | 0 | 0 | 0 | 0 | 0 | 0 | 0 | 0 | 15 | 0 | 0 | 0 | 0 | 0 | 0 | 0 | 19 |
| 15-Jun | SW2 | 0 | 0 | 0 | 0 | 0 | 0 | 0 | 0 | 0 | 0 | 0 | 0 | 0 | 0 | 0 | 0 | 0 | 0 | 0 | 0 | 0 |
| 15-Jun | SW3 | 0 | 0 | 0 | 0 | 0 | 0 | 0 | 0 | 0 | 0 | 0 | 0 | 0 | 0 | 0 | 0 | 0 | 0 | 0 | 0 | 0 |
| Avg/Survey | | 4 | | 8 | | 0 | | 0 | | 0 | | 0 | | 11 | | 0 | | 15 | | 0 | | 73 |

JDA Bird Counts: 6/12/16 to 6/18/16

F(1): Forage AM survey F(2): Forage PM Survey NF(1): Non-Forage AM Survey NF(2): Non-Forage PM Survey

| Date | Zone | Gulls | | | | Cormorant | | | | Caspian tern | | | | White Pelican | | | | Grebe | | | | Total |
|---------------------|------|--------------|------|-------|-------|------------------|------|-------|-------|---------------------|------|-------|-------|----------------------|------|-------|-------|--------------|------|-------|-------|--------------|
| | | F(1) | F(2) | NF(1) | NF(2) | F(1) | F(2) | NF(1) | NF(2) | F(1) | F(2) | NF(1) | NF(2) | F(1) | F(2) | NF(1) | NF(2) | F(1) | F(2) | NF(1) | NF(2) | |
| 16-Jun | PHFB | 0 | 0 | 1 | 3 | 0 | 0 | 0 | 0 | 0 | 0 | 0 | 0 | 2 | 3 | 0 | 0 | 9 | 10 | 0 | 0 | 28 |
| 16-Jun | SWFB | 0 | 0 | 0 | 0 | 0 | 0 | 0 | 0 | 0 | 0 | 0 | 0 | 0 | 0 | 0 | 0 | 0 | 0 | 0 | 0 | 0 |
| 16-Jun | PH1 | 0 | 0 | 0 | 0 | 0 | 0 | 0 | 0 | 0 | 0 | 0 | 0 | 0 | 0 | 0 | 0 | 0 | 0 | 0 | 0 | 0 |
| 16-Jun | PH2 | 0 | 0 | 0 | 0 | 0 | 0 | 0 | 0 | 0 | 0 | 0 | 0 | 0 | 0 | 0 | 0 | 0 | 0 | 0 | 0 | 0 |
| 16-Jun | PH3 | 0 | 0 | 0 | 0 | 0 | 0 | 0 | 0 | 0 | 0 | 0 | 0 | 0 | 0 | 0 | 0 | 0 | 0 | 0 | 0 | 0 |
| 16-Jun | SW1 | 9 | 4 | 0 | 0 | 0 | 0 | 0 | 0 | 0 | 0 | 0 | 0 | 20 | 2 | 0 | 0 | 0 | 0 | 0 | 0 | 35 |
| 16-Jun | SW2 | 4 | 0 | 0 | 0 | 0 | 0 | 0 | 0 | 0 | 0 | 0 | 0 | 2 | 0 | 0 | 0 | 0 | 0 | 0 | 0 | 6 |
| 16-Jun | SW3 | 0 | 0 | 0 | 0 | 0 | 0 | 0 | 0 | 0 | 0 | 0 | 0 | 3 | 0 | 0 | 0 | 0 | 0 | 0 | 0 | 3 |
| Avg/Survey | | 9 | | 2 | | 0 | | 0 | | 0 | | 0 | | 16 | | 0 | | 10 | | 0 | | 72 |
| 17-Jun | PHFB | 0 | 0 | 6 | 1 | 0 | 0 | 0 | 0 | 0 | 0 | 0 | 0 | 5 | 1 | 0 | 0 | 11 | 12 | 0 | 0 | 36 |
| 17-Jun | SWFB | 0 | 0 | 0 | 0 | 0 | 0 | 0 | 0 | 0 | 0 | 0 | 0 | 0 | 0 | 0 | 0 | 0 | 0 | 0 | 0 | 0 |
| 17-Jun | PH1 | 0 | 0 | 0 | 0 | 0 | 0 | 0 | 0 | 0 | 0 | 0 | 0 | 0 | 0 | 0 | 0 | 0 | 0 | 0 | 0 | 0 |
| 17-Jun | PH2 | 0 | 0 | 0 | 0 | 0 | 0 | 0 | 0 | 0 | 0 | 0 | 0 | 0 | 0 | 0 | 0 | 0 | 0 | 0 | 0 | 0 |
| 17-Jun | PH3 | 0 | 0 | 0 | 0 | 0 | 0 | 0 | 0 | 0 | 0 | 0 | 0 | 0 | 0 | 0 | 0 | 0 | 0 | 0 | 0 | 0 |
| 17-Jun | SW1 | 0 | 5 | 0 | 0 | 0 | 0 | 0 | 0 | 0 | 0 | 0 | 0 | 18 | 14 | 0 | 0 | 0 | 0 | 0 | 0 | 37 |
| 17-Jun | SW2 | 0 | 0 | 0 | 0 | 0 | 0 | 0 | 0 | 0 | 0 | 0 | 0 | 0 | 0 | 0 | 0 | 0 | 0 | 0 | 0 | 0 |
| 17-Jun | SW3 | 0 | 0 | 0 | 0 | 0 | 0 | 0 | 0 | 0 | 0 | 0 | 0 | 4 | 0 | 0 | 0 | 0 | 0 | 0 | 0 | 4 |
| Avg/Survey | | 3 | | 4 | | 0 | | 0 | | 0 | | 0 | | 21 | | 0 | | 12 | | 0 | | 77 |
| 18-Jun | PHFB | 0 | 0 | 0 | 0 | 0 | 0 | 0 | 0 | 0 | 0 | 0 | 0 | 11 | 0 | 0 | 0 | 8 | 9 | 0 | 0 | 28 |
| 18-Jun | SWFB | 0 | 0 | 0 | 0 | 0 | 0 | 0 | 0 | 0 | 0 | 0 | 0 | 0 | 0 | 0 | 0 | 0 | 0 | 0 | 0 | 0 |
| 18-Jun | PH1 | 0 | 0 | 0 | 0 | 0 | 0 | 0 | 0 | 0 | 0 | 0 | 0 | 2 | 0 | 0 | 0 | 0 | 0 | 0 | 0 | 2 |
| 18-Jun | PH2 | 0 | 0 | 0 | 0 | 0 | 0 | 0 | 0 | 0 | 0 | 0 | 0 | 0 | 0 | 0 | 0 | 0 | 0 | 0 | 0 | 0 |
| 18-Jun | PH3 | 0 | 0 | 0 | 0 | 0 | 0 | 0 | 0 | 0 | 0 | 0 | 0 | 0 | 0 | 0 | 0 | 0 | 0 | 0 | 0 | 0 |
| 18-Jun | SW1 | 5 | 6 | 0 | 0 | 0 | 0 | 0 | 0 | 0 | 0 | 0 | 0 | 9 | 0 | 0 | 0 | 0 | 0 | 0 | 0 | 20 |
| 18-Jun | SW2 | 0 | 0 | 0 | 0 | 0 | 0 | 0 | 0 | 0 | 0 | 0 | 0 | 0 | 0 | 0 | 0 | 0 | 0 | 0 | 0 | 0 |
| 18-Jun | SW3 | 0 | 0 | 0 | 0 | 0 | 0 | 0 | 0 | 0 | 0 | 0 | 0 | 0 | 0 | 0 | 0 | 0 | 0 | 0 | 0 | 0 |
| Avg/Survey | | 6 | | 0 | | 0 | | 0 | | 0 | | 0 | | 11 | | 0 | | 9 | | 0 | | 50 |
| Totals | | Gulls | | | | Cormorant | | | | Caspian tern | | | | White Pelican | | | | Grebe | | | | Total |
| | | F | | NF | | F | | NF | | F | | NF | | F | | NF | | F | | NF | | |
| Weekly Total | | 123 | | 37 | | 0 | | 0 | | 0 | | 0 | | 173 | | 0 | | 157 | | 0 | | 490 |
| Avg/Survey | | 9 | | 3 | | 0 | | 0 | | 0 | | 0 | | 12 | | 0 | | 11 | | 0 | | 35 |

John Day Dam
Avian Zones



John Day Weekly Averages

| | Temp: | Secchi: | Fallbacks |
|-------------|-----------|-----------------|---------------|
| Sun | 64 | 6.0 | 32 |
| Mon | 64 | 6.0 | |
| Tue | 64 | 6.0 | 28 |
| Wed | 64 | 6.0 | |
| Thur | 64 | 5.0 | 36 |
| Fri | 64 | 5.0 | |
| Sat | 64 | 5.0 | 53 |
| AVG: | 64 | AVG: 5.6 | AVG 37 |
| | | | MAX 53 |
| | | | MIN 28 |

| | NE1 | NE2 | S.Ent | SE1 | N.Ent | JBS Diff | Bay19 |
|-------------|------------|------------|------------|------------|------------|------------|------------|
| Sun | 8.3 | 8.3 | 1.5 | 8.1 | 1.5 | 4.6 | 1.5 |
| Sun | 8.2 | 8.2 | 1.3 | 8.2 | 1.5 | 4.6 | 1.5 |
| Mon | 8.0 | 8.0 | 1.5 | 8.1 | 1.5 | 4.5 | 1.8 |
| Mon | 8.0 | 8.0 | 1.4 | 8.3 | 1.5 | 4.5 | 1.7 |
| Tues | 8.1 | 8.0 | 1.4 | 9.7 | 1.6 | 4.5 | 1.7 |
| Tues | 8.1 | 8.0 | 1.5 | 8.0 | 1.6 | 4.5 | 1.5 |
| Wed | 8.1 | 8.2 | 1.5 | 9.2 | 1.5 | 4.6 | 1.4 |
| Wed | 8.6 | 8.5 | 1.5 | 8.2 | 1.5 | 4.6 | 1.4 |
| Thur | 8.4 | 8.6 | 1.5 | 9.0 | 1.4 | 4.6 | 1.5 |
| Thur | 8.3 | 8.2 | 1.5 | 8.5 | 1.5 | 4.6 | 1.5 |
| Fri | 8.3 | 8.3 | 1.4 | 8.0 | 1.6 | 4.6 | 1.6 |
| Fri | 8.2 | 8.4 | 1.4 | 9.1 | 1.5 | 4.6 | 1.4 |
| Sat | 8.1 | 8.3 | 1.4 | 8.4 | 1.5 | 4.6 | 1.3 |
| Sat | 8.3 | 8.3 | 1.5 | 8.0 | 1.6 | 4.5 | 1.2 |
| AVG: | 8.2 | 8.2 | 1.5 | 8.5 | 1.5 | 4.6 | 1.5 |