

FISHWAY STATUS REPORT

Date: 4/9/2016
 Inspection Period: 4/3/2016 thru 4/9/2016



US Army Corps
 of Engineers
 Portland District

JOHN DAY DAM

JD/WC Project-Fisheries
 P.O. Box 823
 Rufus, Oregon 97050
 Phone: 541-506-7860

All JD Fishways are inspected twice per day during fish season, Mar. 1 - Nov. 30.
 Frequent monitoring of the PLC displays in SMF Fisheries Office as necessary.

John Day Dam	Inspections	Criteria	Total Number of Inspections:	14	Temperature:	48 F
	Out of Criteria	Limit			Secchi:	5.3 Ft.
NORTH FISHWAY			In service; 5 AWS pumps available while # 4 will be re-installed by May.			
Exit differential	0	≤ 0.5'				
Exit Control weirs	0	High setting	High setting is normal for JDN			
Count station differential	0	≤ 0.3'				
Weir crest depth (DS gauge)	0	1.0' ± 0.1'				
Entrance differential	0	1.0' - 2.0'	AVG	1.5		
SOUTH FISHWAY			AWS turbine 2 returned to service/NE 2 gate opened on 3/31. FOGs # 18 & 19 continue closed.			
Exit differential	0	≤ 0.5'				
Exit Control weirs	0	Mid setting	Mid setting is normal for JDS			
Count station differential	0	≤ 0.3'				
Weir crest depth (US gauge)	0	1.0' ± 0.1'				
South entrance differential	0	1.0' - 2.0'	AVG	1.4		
Entrance weir SE1	0	depth (≥ 8')	AVG	8.9		
Collection channel velocity	0	1.5 - 4 fps	AVG	3.61		
N. Entrance PH(Bay 19)differential	0	1.0' - 2.0'	AVG	1.8		
Entrance weir NE1	0	depth (≥ 8')	AVG	8.6		
Entrance weir NE2	0	depth (≥ 8')	AVG	8.6		
JUVENILE PASSAGE			In service with all necessary STSs since 4/1			
Forebay/bypass conduit differential	0	4.0' - 5.0'	AVG	4.5		
Submersible traveling screens	0	visual inspect	All STSs installed by 1 April			
Turbine trashrack drawdown	0	<1.5', wkly	MU trashracks' raking as necessary per the differentials			
Vert barrier screen drawdown	0	<1.5', wkly				
Spill volume	0	N/A	2016 Spill season starting on 4/10/16.			
Spill pattern	0	per FPP				
Turbine Unit Priority	0	per FPP				
Turbine 1% Efficiency	0	per FPP				

SMOLT MONITORING FACILITY

Operation:

In service since 1 April. Every other day sampling by PSMFC biologists in 2016; JD Fisheries crew moves the Switch Gate between sample-bypass modes daily AM.

Maintenance:

All winter maintenance completed by 1 April.

SMF SCADA's investigation by JD Electrical underway. There is a current UFR of \$ 150 K, for the SCADA update's P&S.

Research:

None

Fallbacks: AVG: 76 MAX: 114 MIN: 54

OTHER JOHN DAY ISSUES:

Birds :

see the Avian Numbers tab. We report all species and locations, but in reality only gulls in the tailrace BRZ are relevant at JD.

13 Navlock and Spillway lines are missing out of 125 grid's total; no funding is available to reinstall for 2016 season. UFR for \$ 250K is pending.

A new in April 2016, the JD Avian Lines Improvements' PDT will assess its reliability and design a better/ cheaper way for its maintenance.

Operations:

JBS and SMF in regular operation since 1 April as required by FPP.

JD North fishway has been meeting all FPP criteria since 1/5/16.

JD South Fishway in service with two out of three AWS turbines. With FOGs # 18 & 19 closed, the fishway currently meets all FPP entrance criteria.

MU Gatewell Drawdowns: Weekly or more frequently per river debris loads.

Maintenance:

JD North Fishway AWS - pump # 4 will be reinstalled by a contractor, by mid-May

JD South Fishway AWS turbine 1 OOS long term due to failed pump's lower bearing. Awaiting special funding for its overhaul/replacement.

Calibration: All gauges/ sensors are within the criteria of 0.3' .

Research:

Adult Fish Counting by Normandeau Associates commenced on 1 April 2016.

Proposal by PSMFC to install Adult PIT antennas at both JD Fishways is at the design/PDT level.

Kevin Moynahan

OPM John Day/Willow Creek Project

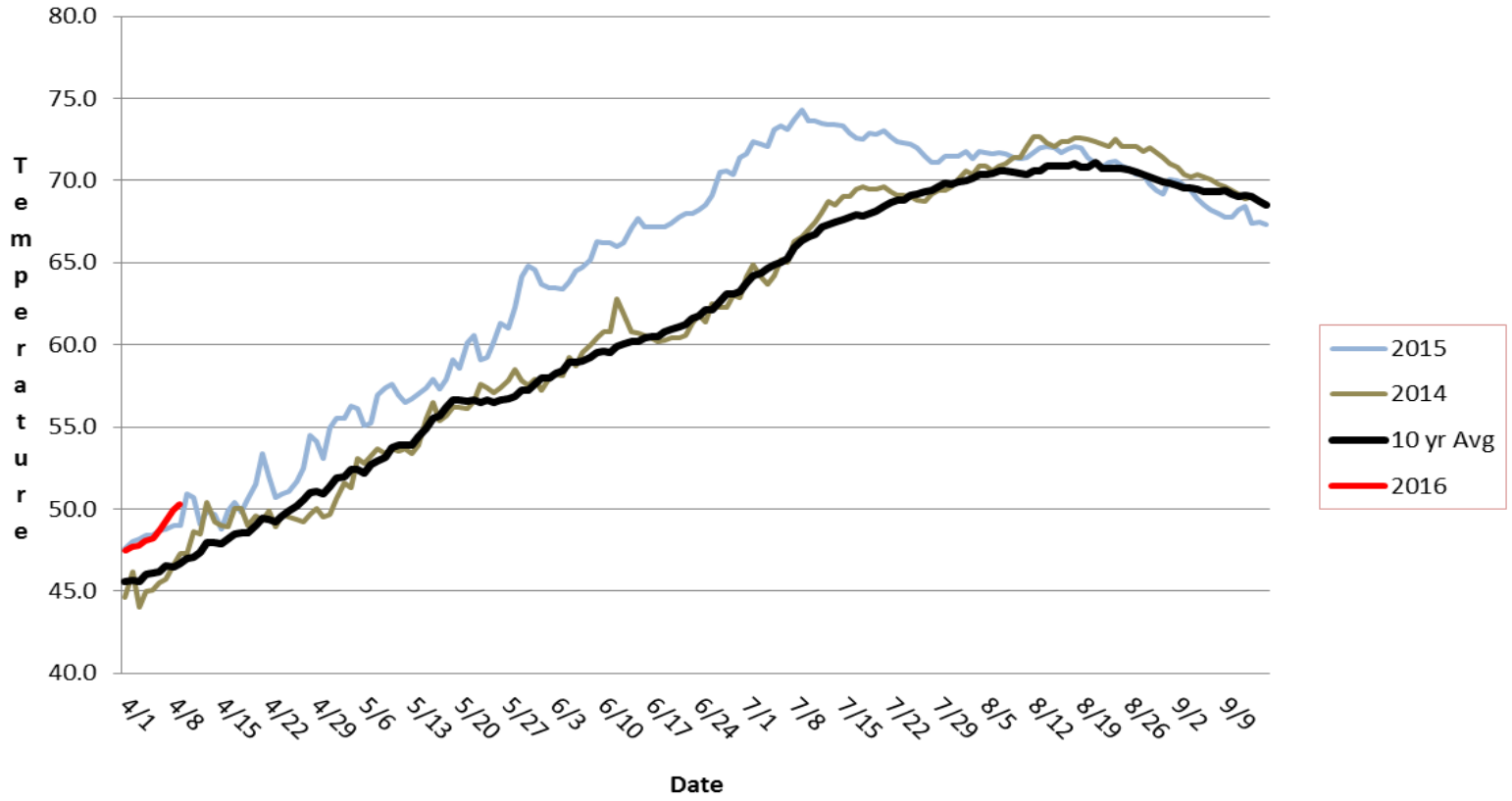
MOYNAHAN, KEVIN, PATRICK, 1393959157

E-Signed by MOYNAHAN, KEVIN, PATRICK, 1393959157
VERIFY authenticity with ApproveIt

ate:

April 9, 2016

JDA SMF Water Temp



JDA Collection Channel Velocity

Date	<i>8-Apr-16</i>
By:	<i>MDL</i>

Bay(s)	Time	Sec.	Velocity (f/s)
<i>0-2</i>	<i>0:56</i>	<i>56</i>	<i>3.21</i>
<i>2 - 4</i>	<i>1:43</i>	<i>103</i>	<i>3.83</i>
<i>4 - 6</i>	<i>2:31</i>	<i>151</i>	<i>3.75</i>
<i>6 - 8</i>	<i>3:17</i>	<i>197</i>	<i>3.91</i>
<i>8 - 10</i>	<i>4:05</i>	<i>245</i>	<i>3.75</i>
<i>10 - 12</i>	<i>4:52</i>	<i>292</i>	<i>3.83</i>
<i>12 - 14</i>	<i>5:43</i>	<i>343</i>	<i>3.53</i>
<i>14 - 16</i>	<i>6:38</i>	<i>398</i>	<i>3.27</i>
<i>16 - 18</i>	<i>7:31</i>	<i>451</i>	<i>3.40</i>
			3.61

NE TW	162.3
#2 RPM	64
#3 RPM	64

JDA Bird Counts: 4/3/16 to 4/9/16

F(1): Forage AM survey F(2): Forage PM Survey NF(1): Non-Forage AM Survey NF(2): Non-Forage PM Survey

Date	Zone	Gulls				Cormorant				Caspian tern				White Pelican				Grebe				Total
		F(1)	F(2)	NF(1)	NF(2)	F(1)	F(2)	NF(1)	NF(2)	F(1)	F(2)	NF(1)	NF(2)	F(1)	F(2)	NF(1)	NF(2)	F(1)	F(2)	NF(1)	NF(2)	
3-Apr	PHFB	0	0	0	0	0	0	6	0	0	0	0	0	0	0	0	0	2	3	0	0	11 0 6 0 0 2 29 1
3-Apr	SWFB	0	0	0	0	0	0	0	0	0	0	0	0	0	0	0	0	0	0	0	0	
3-Apr	PH1	0	0	0	0	3	3	0	0	0	0	0	0	0	0	0	0	0	0	0	0	
3-Apr	PH2	0	0	0	0	0	0	0	0	0	0	0	0	0	0	0	0	0	0	0	0	
3-Apr	PH3	0	0	0	0	0	0	0	0	0	0	0	0	0	0	0	0	0	0	0	0	
3-Apr	SW1	0	0	0	0	2	0	0	0	0	0	0	0	0	0	0	0	0	0	0	0	
3-Apr	SW2	0	0	0	0	0	21	8	0	0	0	0	0	0	0	0	0	0	0	0	0	
3-Apr	SW3	0	1	0	0	0	0	0	0	0	0	0	0	0	0	0	0	0	0	0	0	
Avg/Survey		1	0	0	0	15	7	0	0	0	0	0	0	0	0	3	0					49
4-Apr	PHFB	0	0	0	0	0	0	0	0	0	0	0	0	0	0	3	3	0	0	0	0	6 1 3 0 0 1 5 0
4-Apr	SWFB	0	0	0	1	0	0	0	0	0	0	0	0	0	0	0	0	0	0	0	0	
4-Apr	PH1	0	0	0	0	3	0	0	0	0	0	0	0	0	0	0	0	0	0	0	0	
4-Apr	PH2	0	0	0	0	0	0	0	0	0	0	0	0	0	0	0	0	0	0	0	0	
4-Apr	PH3	0	0	0	0	0	0	0	0	0	0	0	0	0	0	0	0	0	0	0	0	
4-Apr	SW1	0	0	0	0	0	0	0	1	0	0	0	0	0	0	0	0	0	0	0	0	
4-Apr	SW2	0	0	0	0	0	0	2	3	0	0	0	0	0	0	0	0	0	0	0	0	
4-Apr	SW3	0	0	0	0	0	0	0	0	0	0	0	0	0	0	0	0	0	0	0	0	
Avg/Survey		0	1	0	0	2	3	0	0	0	0	0	0	0	0	3	0					16
5-Apr	PHFB	0	0	0	0	0	0	0	0	0	0	0	0	0	0	3	0	0	0	0	0	3 7 4 0 1 2 12 0
5-Apr	SWFB	0	0	7	0	0	0	0	0	0	0	0	0	0	0	0	0	0	0	0	0	
5-Apr	PH1	4	0	0	0	0	0	0	0	0	0	0	0	0	0	0	0	0	0	0	0	
5-Apr	PH2	0	0	0	0	0	0	0	0	0	0	0	0	0	0	0	0	0	0	0	0	
5-Apr	PH3	1	0	0	0	0	0	0	0	0	0	0	0	0	0	0	0	0	0	0	0	
5-Apr	SW1	0	0	0	0	2	0	0	0	0	0	0	0	0	0	0	0	0	0	0	0	
5-Apr	SW2	0	0	0	0	0	0	12	0	0	0	0	0	0	0	0	0	0	0	0	0	
5-Apr	SW3	0	0	0	0	0	0	0	0	0	0	0	0	0	0	0	0	0	0	0	0	
Avg/Survey		3	4	0	0	1	6	0	0	0	0	0	0	0	0	2	0					29
6-Apr	PHFB	3	0	0	0	0	1	12	0	0	0	0	0	0	0	0	0	0	0	0	3	19 3 6 0 0 0 28 0
6-Apr	SWFB	0	0	3	0	0	0	0	0	0	0	0	0	0	0	0	0	0	0	0	0	
6-Apr	PH1	3	0	0	1	0	0	1	1	0	0	0	0	0	0	0	0	0	0	0	0	
6-Apr	PH2	0	0	0	0	0	0	0	0	0	0	0	0	0	0	0	0	0	0	0	0	
6-Apr	PH3	0	0	0	0	0	0	0	0	0	0	0	0	0	0	0	0	0	0	0	0	
6-Apr	SW1	0	0	0	0	0	0	0	0	0	0	0	0	0	0	0	0	0	0	0	0	
6-Apr	SW2	0	0	0	0	0	0	0	28	0	0	0	0	0	0	0	0	0	0	0	0	
6-Apr	SW3	0	0	0	0	0	0	0	0	0	0	0	0	0	0	0	0	0	0	0	0	
Avg/Survey		3	2	0	0	1	21	0	0	0	0	0	0	0	0	0	2					56

JDA Bird Counts: 4/3/16 to 4/9/16

F(1): Forage AM survey F(2): Forage PM Survey NF(1): Non-Forage AM Survey NF(2): Non-Forage PM Survey

Date	Zone	Gulls				Cormorant				Caspian tern				White Pelican				Grebe				Total
		F(1)	F(2)	NF(1)	NF(2)	F(1)	F(2)	NF(1)	NF(2)	F(1)	F(2)	NF(1)	NF(2)	F(1)	F(2)	NF(1)	NF(2)	F(1)	F(2)	NF(1)	NF(2)	
7-Apr	PHFB	0	0	0	1	0	0	15	15	0	0	0	0	0	0	0	0	0	0	5	0	36
7-Apr	SWFB	0	0	1	0	0	0	0	0	0	0	0	0	0	0	0	0	0	0	0	0	1
7-Apr	PH1	0	0	0	0	0	1	2	0	0	0	0	0	0	0	0	0	0	0	0	0	3
7-Apr	PH2	0	0	0	0	0	0	0	0	0	0	0	0	0	0	0	0	0	0	0	0	0
7-Apr	PH3	0	0	0	0	0	0	0	0	0	0	0	0	0	0	0	0	0	0	0	0	0
7-Apr	SW1	0	0	0	0	0	0	0	0	0	0	0	0	0	0	0	0	0	0	0	0	0
7-Apr	SW2	0	0	0	0	0	0	7	0	0	0	0	0	0	0	0	0	0	0	0	0	7
7-Apr	SW3	0	0	0	0	0	0	0	0	0	0	0	0	0	0	0	0	0	0	0	0	0
Avg/Survey		0		1		1		20		0		0		0		0		0		3		47
8-Apr	PHFB	0	0	0	0	0	0	15	7	0	0	0	0	0	0	0	0	0	0	3	2	27
8-Apr	SWFB	0	0	2	2	0	0	0	0	0	0	0	0	0	0	0	0	0	0	0	0	4
8-Apr	PH1	0	0	0	0	0	0	0	0	0	0	0	0	0	0	0	0	0	0	0	0	0
8-Apr	PH2	0	0	0	0	0	0	0	0	0	0	0	0	0	0	0	0	0	0	0	0	0
8-Apr	PH3	0	0	0	0	0	0	0	0	0	0	0	0	0	0	0	0	0	0	0	0	0
8-Apr	SW1	0	0	0	0	0	0	0	0	0	0	0	0	0	0	0	0	0	0	0	0	0
8-Apr	SW2	0	0	0	0	0	0	0	0	0	0	0	0	0	0	0	0	0	0	0	0	0
8-Apr	SW3	0	0	0	0	0	0	0	0	0	0	0	0	0	0	0	0	0	0	0	0	0
Avg/Survey		0		2		0		11		0		0		0		0		0		3		31
9-Apr	PHFB	0	0	0	2	0	0	13	3	0	0	0	0	0	0	0	0	0	0	17	17	52
9-Apr	SWFB	0	0	0	2	0	0	0	0	0	0	0	0	0	0	0	0	0	0	0	0	2
9-Apr	PH1	0	0	0	0	1	1	1	0	0	0	0	0	0	0	0	0	0	0	0	0	3
9-Apr	PH2	1	0	0	0	0	0	0	0	0	0	0	0	0	0	0	0	0	0	0	0	1
9-Apr	PH3	1	0	0	0	0	0	0	0	0	0	0	0	0	0	0	0	0	0	0	0	1
9-Apr	SW1	0	0	0	0	0	0	0	0	0	0	0	0	0	0	0	0	0	0	0	0	0
9-Apr	SW2	0	0	1	0	0	0	0	1	0	0	0	0	0	0	0	0	0	0	0	0	2
9-Apr	SW3	0	0	0	0	0	0	0	0	0	0	0	0	0	0	0	0	0	0	0	0	0
Avg/Survey		1		3		1		9		0		0		0		0		0		17		61
Totals		Gulls				Cormorant				Caspian tern				White Pelican				Grebe				Total
		F		NF		F		NF		F		NF		F		NF		F		NF		
Weekly Total		14		23		38		153		0		0		0		0		14		47		289
Avg/Survey		1		2		3		11		0		0		0		0		1		3		21

John Day Dam
Avian Zones



John Day Weekly Averages

	Temp:	Secchi:	Fallbacks	
Sun	47	5.0	82	April 3rd @0645 - April 4th @1010
Mon	47	5.0	Bypass	
Tue	47	6.0	55	April 5th @ 0645 - April 6th @ 1045
Wed	49	5.5	Bypass	
Thur	49	5.0	114	April 7th @ 0645 - April 8th @ 0945
Fri	50	5.0	Bypass	
Sat	50	5.5	54	April 9th @ 0645 - April 9th @2400
AVG:	48	AVG: style="border: 1px solid black; text-align: center;"> 5.3	AVG style="border: 1px solid black; text-align: center;"> 76	
			MAX style="border: 1px solid black; text-align: center;"> 114	
			MIN style="border: 1px solid black; text-align: center;"> 54	

	NE1	NE2	S.Ent	SE1	N.Ent	JBS Diff	Bay19
Sun	8.0	8.0	1.5	8.1	1.4	4.6	1.7
Sun	8.1	8.0	1.5	8.2	1.5	4.5	1.6
Mon	8.0	8.0	1.6	8.6	1.5	4.5	1.7
Mon	8.1	8.1	1.5	8.1	1.6	4.5	1.7
Tues	8.2	8.2	1.5	8.5	1.5	4.6	1.8
Tues	8.0	8.0	1.5	8.8	1.4	4.6	1.6
Wed	8.9	8.8	1.6	8.9	1.6	4.6	1.8
Wed	9.3	9.3	1.3	9.4	1.5	4.6	1.7
Thur	8.9	9.1	1.1	9.6	1.5	4.6	1.8
Thur	9.2	9.2	1.2	9.3	1.5	4.2	1.9
Fri	9.6	9.6	1.0	9.8	1.5	4.5	1.9
Fri	8.7	8.7	1.4	8.8	1.6	4.4	1.9
Sat	8.7	8.7	1.3	8.8	1.5	4.5	1.8
Sat	9.1	9.1	1.5	9.1	1.5	4.6	1.9
AVG:	8.6	8.6	1.4	8.9	1.5	4.5	1.8