

FISHWAY STATUS REPORT

Date: 4/2/2016
 Inspection Period: 3/27/2016 thru 4/2/2016



US Army Corps
 of Engineers
 Portland District

JOHN DAY DAM

JD/WC Project-Fisheries
 P.O. Box 823
 Rufus, Oregon 97050
 Phone: 541-506-7860

All JD Fishways are inspected twice per day during fish season, Mar. 1 - Nov. 30.
 Frequent monitoring of the PLC displays in SMF Fisheries Office as necessary.

John Day Dam	Inspections	Criteria	Total Number of Inspections:	14	Temperature:	46 F
	Out of Criteria	Limit			Secchi:	4.9 Ft.
NORTH FISHWAY			In service; 5 AWS pumps available while # 4 will be re-installed by May.			
Exit differential	0	≤ 0.5'				
Exit Control weirs	0	High setting	High setting is normal for JDN			
Count station differential	0	≤ 0.3'				
Weir crest depth (DS gauge)	0	1.0' ± 0.1'				
Entrance differential	0	1.0' - 2.0'	AVG	1.5		
SOUTH FISHWAY			AWS turbine 2 returned to service/ NE 2 gate opened on 3/31. FOGs # 18 & 19 continue closed.			
Exit differential	0	≤ 0.5'				
Exit Control weirs	0	Mid setting	Mid setting is normal for JDS			
Count station differential	0	≤ 0.3'				
Weir crest depth (US gauge)	0	1.0' ± 0.1'				
South entrance differential	1	1.0' - 2.0'	AVG	1.2	OOC at 0.9' on 3/31 due to one AWS turbine operation	
Entrance weir SE1	2	depth (≥ 8')	AVG	8.1	OOC at 7.3' o 3/29 and at 7.7' on 3/31 due to one AWS	
Collection channel velocity	0	1.5 - 4 fps	AVG	1.79		
N. Entrance PH(Bay 19)differential	0	1.0' - 2.0'	AVG	1.7		
Entrance weir NE1	1	depth (≥ 8')	AVG	8.2	OOC at 7.8' on 4/1; adjusted immediately	
Entrance weir NE2	0	depth (≥ 8')	AVG	8.1	NE2 entrance re-opened on 3/31 at 1600 hrs.	
JUVENILE PASSAGE			In regular service with all necessary STSs since 4/1			
Forebay/bypass conduit differential	0	4.0' - 5.0'	AVG	OOS		
Submersible traveling screens	0	visual inspect	All necessary STSs installed by 1 April			
Turbine trashrack drawdown	0	<1.5', wkly	MU trashracks' raking as necessary per the differentials			
Vert barrier screen drawdown	0	<1.5', wkly				
Spill volume	0	N/A	2016 Spill season starting on 4/10/16.			
Spill pattern	0	per FPP				
Turbine Unit Priority	0	per FPP				
Turbine 1% Efficiency	0	per FPP				

SMOLT MONITORING FACILITY

Operation:

SMF was watered up for the pre-season calibrations and functional testing on 3/23. Switched to sampling on 1 April. Every other day sampling in 2016.

Maintenance:

All winter maintenance completed by 1 April.

SMF SCADA's investigation by JD Electrical underway. There is a current UFR of \$ 150 K, for the SCADA update's P&S.

Research:

None

Fallbacks: AVG: 35 MAX: 55 MIN: 14

OTHER JOHN DAY ISSUES:

Birds :

see the Avian Numbers tab. We report all species and locations, but in reality only gulls in the tailrace BRZ are relevant at JD.

13 Navlock and Spillway lines are missing out of 125 grid's total; no funding is available to reinstall for 2016 season.

Operations:

JBS and SMF in regular operation since 1 April as required by FPP.

JD North fishway returned to service and it has been meeting all FPP criteria since 1/5/16.

JD South Fishway AWS turbine 2 & NE 2 gate returned to service on 3/31. FOGs # 18 & 19 remain closed due to insufficient AWS (two turbines operation.)

MU Gatewell Drawdowns: Weekly or more frequently per river debris loads.

Maintenance:

JD North Fishway AWS - pump # 4 will be reinstalled by a contractor by mid-May

JD South Fishway AWS turbine 1 OOS long term due to failed pump's lower bearing. Awaiting special funding for its overhaul/replacement.

Calibration: All gauges/ sensors are within the criteria of 0.3' .

Research:

Adult Fish Counting by Normandeau Associates commenced on 1 April 2016.

Proposal by PSMFC to install Adult PIT antennas at both JD Fishways is at the design/PDT level.

Kevin Moynahan

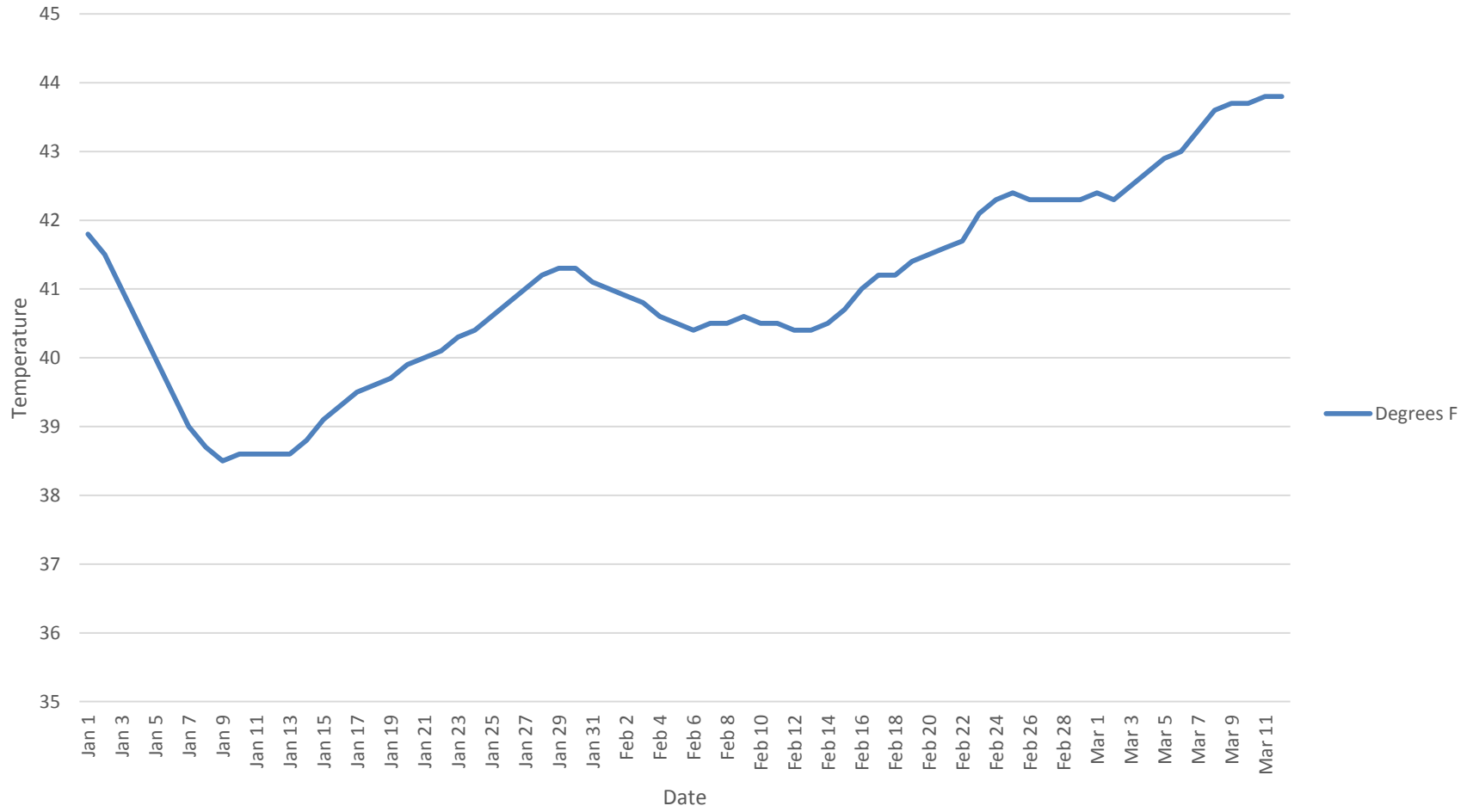
OPM John Day/Willow Creek Project

E-Signed by MOYNAHAN,KEVIN.PATRICK.1393959157
VERIFY authenticity with ApproveIt
MOYNAHAN,KEVIN.PATRICK.1393959157

ate:

April 2, 2016

John Day Tailwater Temperature



JDA Collection Channel Velocity

Date 12-Mar-16

By: MDL

Bay(s)	Time	Sec.	Velocity (f/s)
0-2	2:12	132	1.36
2 - 4	3:50	230	1.84
4 - 6	5:19	319	2.02
6 - 8	6:56	416	1.86
8 - 10	8:34	514	1.84
10 - 12	10:19	619	1.71
12 - 14	12:02	722	1.75
14 - 16	13:37	817	1.89
16 - 18	15:17	917	1.80
			1.79

JDA Bird Counts: 3/27/16 to 4/2/16
 F(1): Forage AM survey F(2): Forage PM Survey NF(1): Non-Forage AM Survey NF(2): Non-Forage PM Survey

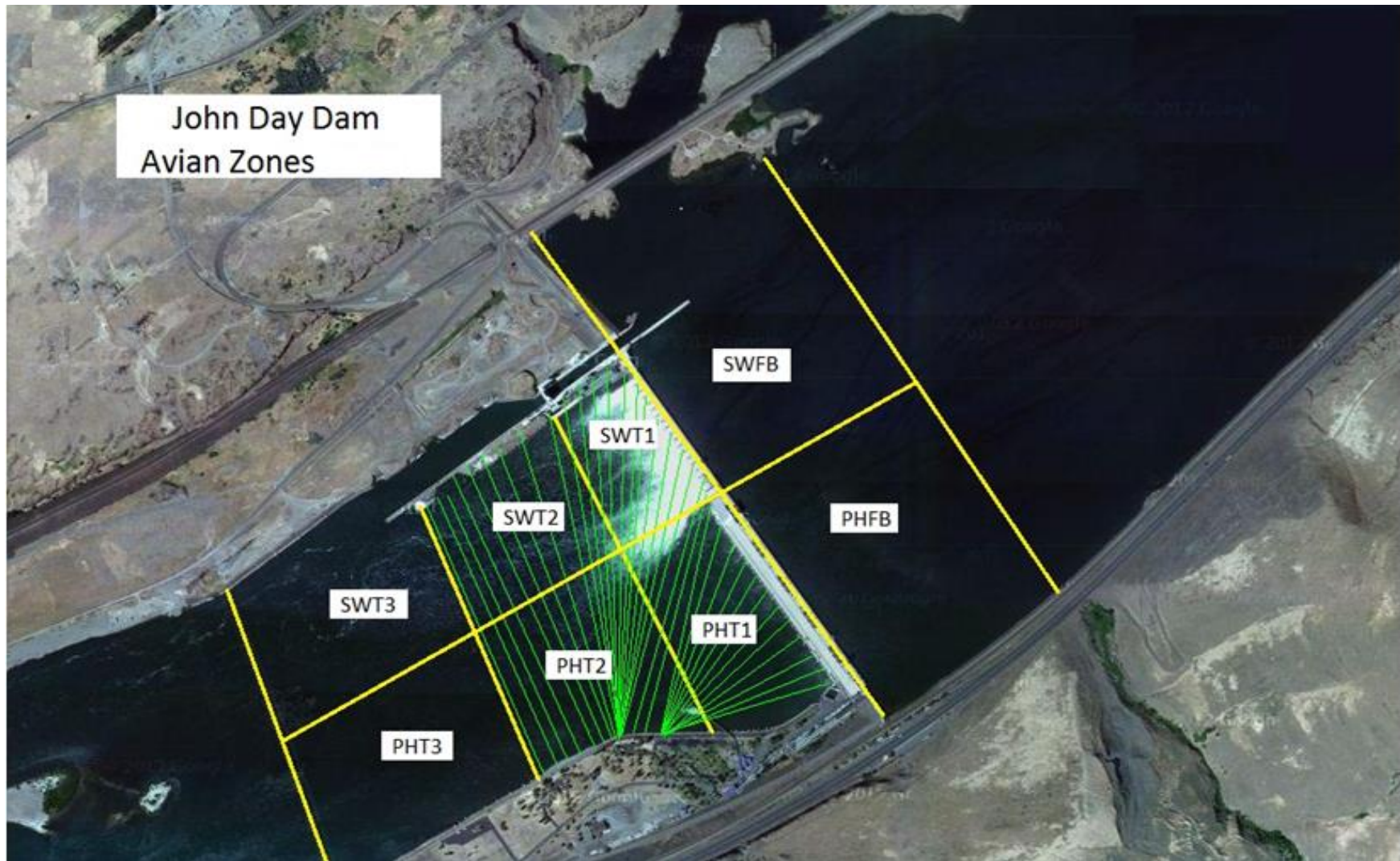
Date	Zone	Gulls				Cormorant				Caspian tern				White Pelican				Grebe				Total
		F(1)	F(2)	NF(1)	NF(2)	F(1)	F(2)	NF(1)	NF(2)	F(1)	F(2)	NF(1)	NF(2)	F(1)	F(2)	NF(1)	NF(2)	F(1)	F(2)	NF(1)	NF(2)	
31-Mar	PHFB	0	0	0	0	0	0	28	0	0	0	0	0	0	0	0	0	0	0	0	0	28
31-Mar	SWFB	0	0	0	0	0	0	0	0	0	0	0	0	0	0	0	0	0	0	0	0	0
31-Mar	PH1	0	0	0	0	4	2	0	0	0	0	0	0	0	0	0	0	0	0	0	0	6
31-Mar	PH2	0	0	0	0	0	0	0	0	0	0	0	0	0	0	0	0	0	0	0	0	0
31-Mar	PH3	0	0	0	0	0	0	0	0	0	0	0	0	0	0	0	0	0	0	0	0	0
31-Mar	SW1	0	0	0	0	0	0	1	0	0	0	0	0	0	0	0	0	0	0	0	0	1
31-Mar	SW2	0	0	0	0	0	0	7	22	0	0	0	0	0	0	0	0	0	0	0	0	29
31-Mar	SW3	1	1	0	0	0	0	0	0	0	0	0	0	0	0	0	0	0	0	0	0	2
Avg/Survey		1	0	0	0	3	2	29	0	0	0	0	0	0	0	0	0	0	0	0	0	66

1-Apr	PHFB	0	0	0	0	0	0	28	0	0	0	0	0	0	0	0	0	0	0	0	0	28
1-Apr	SWFB	0	0	0	0	0	0	0	0	0	0	0	0	0	0	0	0	0	0	0	0	0
1-Apr	PH1	0	0	0	0	0	0	0	0	0	0	0	0	0	0	0	0	0	0	0	0	0
1-Apr	PH2	0	0	0	0	0	0	0	0	0	0	0	0	0	0	0	0	0	0	0	0	0
1-Apr	PH3	0	0	0	0	0	0	0	0	0	0	0	0	0	0	0	0	0	0	0	0	0
1-Apr	SW1	0	0	0	0	0	0	0	0	0	0	0	0	0	0	0	0	0	0	0	0	0
1-Apr	SW2	0	0	0	0	0	0	4	0	0	0	0	0	0	0	0	0	0	0	0	0	4
1-Apr	SW3	0	0	0	0	0	0	0	0	0	0	0	0	0	0	0	0	0	0	0	0	0
Avg/Survey		0	0	0	0	0	0	16	0	0	0	0	0	0	0	0	0	0	0	0	0	32

2-Apr	PHFB	0	0	0	0	0	0	0	0	0	0	0	0	0	0	0	0	0	0	0	0	0
2-Apr	SWFB	0	0	0	0	0	0	0	0	0	0	0	0	0	0	0	0	0	0	0	0	0
2-Apr	PH1	0	0	0	0	6	0	0	0	0	0	0	0	0	0	0	0	0	0	0	0	6
2-Apr	PH2	0	0	0	0	0	0	0	0	0	0	0	0	0	0	0	0	0	0	0	0	0
2-Apr	PH3	0	0	0	0	0	0	0	0	0	0	0	0	0	0	0	0	0	0	0	0	0
2-Apr	SW1	0	0	0	0	1	0	0	0	0	0	0	0	0	0	0	0	0	0	0	0	1
2-Apr	SW2	0	0	0	0	0	0	27	19	0	0	0	0	0	0	0	0	0	0	0	0	46
2-Apr	SW3	1	0	0	0	0	0	0	0	0	0	0	0	0	0	0	0	0	0	0	0	1
Avg/Survey		1	0	0	0	4	0	23	0	0	0	0	0	0	0	0	0	0	0	0	0	54

Totals	Gulls				Cormorant				Caspian tern				White Pelican				Grebe				Total
	F	NF	F	NF	F	NF	F	NF	F	NF	F	NF	F	NF	F	NF					
Weekly Total	3	17	14	199	0	0	0	0	0	0	1	1	0	0	0	0					
Avg/Survey	0	1	1	14	0	0	0	0	0	0	0	0									

John Day Dam
Avian Zones



John Day Weekly Averages

	Temp:	Secchi:	Fallbacks
Sun	45	5.5	
Mon	45	4.5	
Tue	45	4.5	
Wed	47	5.0	
Thur	47	5.0	
Fri	47	5.0	55
Sat	47	5.0	14
AVG:	46	AVG: 4.9	AVG 35
			MAX 55
			MIN 14

	NE1	NE2	S.Ent	SE1	N.Ent	JBS Diff	Bay19
Sun	8.5	Closed	1.1	8.0	1.4	5	1.7
Sun	8.3		1.1	8.0	1.5	5	1.9
Mon	8.2		1.2	8.4	1.6	5	1.9
Mon	8.4		1.0	8.2	1.5	5	1.8
Tues	8.2		1.2	8.2	1.5	5	1.6
Tues	8.8		1.2	7.3	1.7	4.6	1.5
Wed	8.3		1.0	8.0	1.6	4.5	1.8
Wed	8.4		1.6	8.0	1.5	5.0	1.1
Thur	8.2		0.9	8.4	1.6	4.5	1.8
Thur	8.0		1.0	7.7	1.5	4.6	
Fri	7.8	8.0	1.4	8.9	1.4	4.5	1.9
Fri	8.1	8.1	1.4	8.2	1.6	4.6	1.7
Sat	8.0	8.1	1.5	8.4	1.5	4.6	2.0
Sat	8.0	8.0	1.4	8.2	1.5	4.5	1.8
AVG:	8.2	8.1	1.2	8.1	1.5	4.6	1.7