

# FISHWAY STATUS REPORT

Date: 2/20/2016  
 Inspection Period: 2/14/2016 thru 2/20/2016



US Army Corps  
 of Engineers  
 Portland District

## JOHN DAY DAM

JD/WC Project-Fisheries  
 P.O. Box 823  
 Rufus, Oregon 97050  
 Phone: 541-506-7860

One inspection per day during the winter maintenance season, 1 December - 28 February.  
 Frequent monitoring of the PLC displays in SMF Fisheries Office as necessary.

John Day Dam	Inspections	Criteria	Total Number of Inspections:	7	Temperature:	41 F
	Out of Criteria	Limit			Secchi:	5.5 Ft.
<b>NORTH FISHWAY</b>			In service; 5 AWS pumps available while # 4 will be re-installed soon.			
Exit differential	0	≤ 0.5'				
Exit Control weirs	0	High setting	High setting is normal for JDN			
Count station differential	0	≤ 0.3'				
Weir crest depth (DS gauge)	0	1.0' ± 0.1'				
Entrance differential	0	1.0' - 2.0'	AVG	1.5		
<b>SOUTH FISHWAY</b>			OOS for winter maintenance since 1/7/16. ETR is late February 2016.			
Exit differential	0	≤ 0.5'				
Exit Control weirs	0	Mid setting	Mid setting is normal for JDS			
Count station differential	0	≤ 0.3'				
Weir crest depth (US gauge)	0	1.0' ± 0.1'				
South entrance differential	0	1.0' - 2.0'	AVG	#DIV/0!		
Entrance weir SE1	0	depth (≥ 8')	AVG	#DIV/0!		
Collection channel velocity	0	1.5 - 4 fps	AVG	2.87		
N. Entrance PH(Bay 19)differential	0	1.0' - 2.0'	AVG	#DIV/0!		
Entrance weir NE1	0	depth (≥ 8')	AVG	#DIV/0!		
Entrance weir NE2	0	depth (≥ 8')	AVG	#DIV/0!		
<b>JUVENILE PASSAGE</b>			JBS successfully dewatered on 1/20/16. ETR is late March 2016.			
Forebay/bypass conduit differential	0	4.0' - 5.0'	AVG	4.4		
Submersible traveling screens	0	visual inspect	All STSs removed by 12/30/15; their annual / winter maintenance is underway			
Turbine trashrack drawdown	0	<1.5', wkly	MU trashracks' raking as necessary per the differentials			
Vert barrier screen drawdown	0	<1.5', wkly				
Spill volume	0	N/A	2016 Spill season starting on 4/10/16.			
Spill pattern	0	per FPP				
Turbine Unit Priority	0	per FPP				
Turbine 1% Efficiency	0	per FPP				

## SMOLT MONITORING FACILITY

**Operation:**

SMF will be OOS/ undergoing maintenance until late March'15.

**Maintenance:**

SMF winterized by JD Fisheries on 11/15. Only annual PMs will be performed this coming winter as all SMF hardware appears to be in good working order.

SMF SCADA (control system's) annual maintenance by JD Electrical underway. There is a current UFR of \$ 150 K, for the SCADA update's P&S.

**Research:**

None

**Fallbacks:**                      AVG:                                      MAX:      0                                      MIN:      0

## OTHER JOHN DAY ISSUES:

**Birds :**

see the Avian Numbers tab. We report all species and locations, but in reality only gulls in the tailrace BRZ are relevant at JD.

12 Navlock and Spillway lines are missing out of 125 grid's total; JD attempting to contract their reinstatement before May 2016; need \$...

Lines 25 and 26 have been reinstalled by a contractor by 11/21; the remaining lines had been retensioned under the same contract.

**Operations:**

JBS Collection Channel OOS for winter maintenance through mid March.

JD North fishway returned to service and it has been meeting all FPP criteria since 1/5/16.

JD South Fishway OOS since 1/7/16 . ETR is late February 2016.

MU Gatewell Drawdowns: Complete for 2015 passage season.

**Maintenance:**

JD JBS orifice gates/ tainter gate's annual maintenance underway.

JD North Fishway AWS - pump # 4 will be reinstalled soon by a contractor.

**JD South Adult Fishway's annual maintenance is underway. Its AWS turbines 1 & 2 were inspected and both were found with failed lower bearings.**

**Turbine 1 will be OOS long term for its repair, while turbine 2 repair is anticipated to be relatively short; there is a strong chance that # 2 could be in service by 1 March, FPP deadline.**

Calibration: All gauges/ sensors are within the criteria of 0.3' .

**Research:**

2015 Adult Fish Counting by Normandeau Associates was completed on 10/31. The counting will commence again on 1 April 2016.

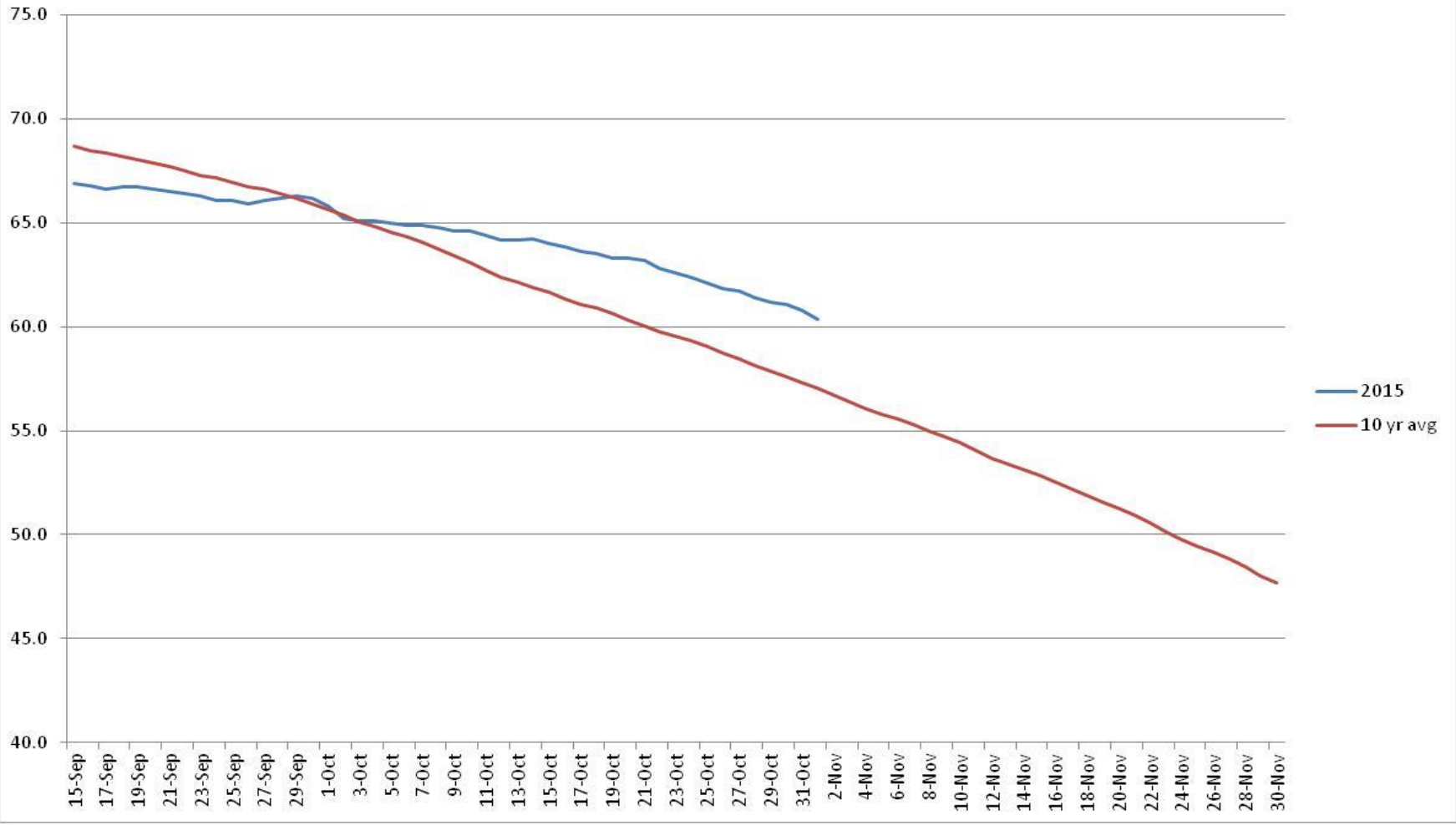
Proposal by PSMFC to install Adult PIT antennas at both JD Fishways is at the design/PDT level.

Kevin Moynahan  
OPM John Day/Willow Creek Project

E-Signed by MOYNAHAN, KEVIN, PATRICK, 1393959157  
VERIFY authenticity with ApproveIt  
**MOYNAHAN, KEVIN, PATRICK, 1393959157** ate:

February 20, 2016

### John Day TW Temperature



## JDA Collection Channel Velocity

Date 24-Dec-15

By: MDL

Bay(s)	Time	Sec.	Velocity (f/s)
0-2	1:29	89	2.02
2 - 4	2:31	151	2.90
4 - 6	3:35	215	2.81
6 - 8	4:37	277	2.90
8 - 10	5:45	345	2.65
10 - 12	6:48	408	2.86
12 - 14	7:52	472	2.81
14 - 16	8:56	536	2.81
16 - 18	9:40	580	4.09
			<b>2.87</b>

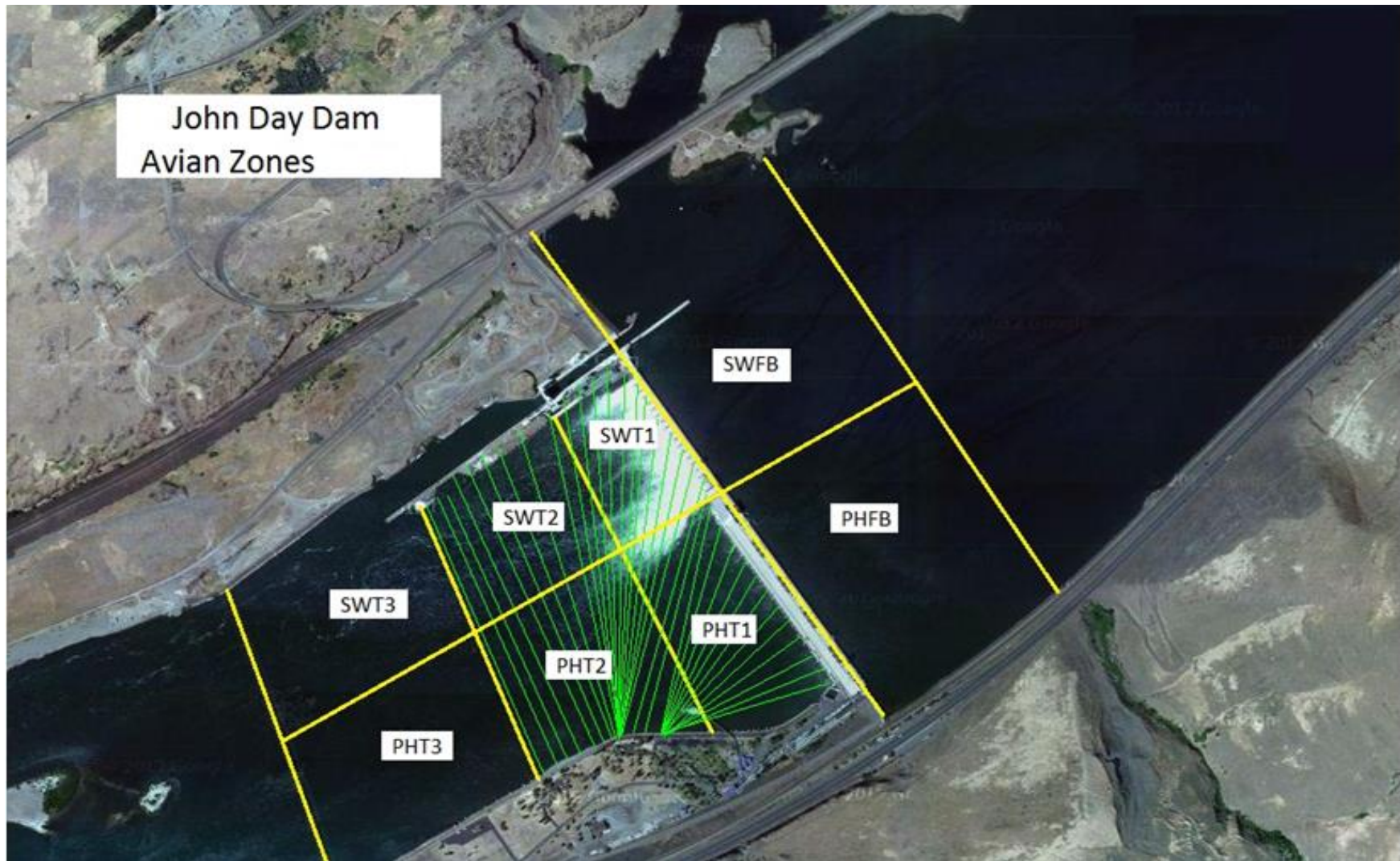
**JDA Bird Counts: 2/14/16 to 2/20/16**

F(1): Forage AM survey F(2): Forage PM Survey NF(1): Non-Forage AM Survey NF(2): Non-Forage PM Survey

Date	Zone	Gulls				Cormorant				Caspian tern				White Pelican				Grebe				Total
		F(1)	F(2)	NF(1)	NF(2)	F(1)	F(2)	NF(1)	NF(2)	F(1)	F(2)	NF(1)	NF(2)	F(1)	F(2)	NF(1)	NF(2)	F(1)	F(2)	NF(1)	NF(2)	
14-Feb	PHFB	0	0	0	0	0	0	0	0	0	0	0	0	0	0	0	0	0	0	0	0	0
14-Feb	SWFB	0	0	0	0	0	0	0	0	0	0	0	0	0	0	0	0	0	0	0	0	0
14-Feb	PH1	0	0	0	0	0	0	2	0	0	0	0	0	0	0	0	0	0	0	0	0	2
14-Feb	PH2	0	0	0	0	0	0	0	0	0	0	0	0	0	0	0	0	0	0	0	0	0
14-Feb	PH3	0	0	0	0	0	0	0	0	0	0	0	0	0	0	0	0	0	0	0	0	0
14-Feb	SW1	0	0	0	0	0	0	0	0	0	0	0	0	0	0	0	0	0	0	0	0	0
14-Feb	SW2	0	0	0	0	0	0	0	0	0	0	0	0	0	0	0	0	0	0	0	0	0
14-Feb	SW3	0	0	0	0	0	0	23	0	0	0	0	0	0	0	0	0	0	0	0	0	23
Avg/Survey		0	0	0	0	0	0	13	0	0	0	0	0	0	0	0	0	0	0	0	0	25
15-Feb	PHFB	0	0	0	0	0	0	0	0	0	0	0	0	0	0	0	0	0	0	0	0	0
15-Feb	SWFB	0	0	0	0	0	0	0	0	0	0	0	0	0	0	0	0	0	0	0	0	0
15-Feb	PH1	0	0	0	0	0	0	1	0	0	0	0	0	0	0	0	0	0	0	0	0	1
15-Feb	PH2	0	0	0	0	0	0	0	0	0	0	0	0	0	0	0	0	0	0	0	0	0
15-Feb	PH3	0	0	0	0	0	0	0	0	0	0	0	0	0	0	0	0	0	0	0	0	0
15-Feb	SW1	0	0	0	0	0	0	1	0	0	0	0	0	0	0	0	0	0	0	0	0	1
15-Feb	SW2	0	0	0	0	0	0	0	0	0	0	0	0	0	0	0	0	0	0	0	0	0
15-Feb	SW3	0	0	0	0	0	0	25	0	0	0	0	0	0	0	0	0	0	0	0	0	25
Avg/Survey		0	0	0	0	0	0	14	0	0	0	0	0	0	0	0	0	0	0	0	0	27
16-Feb	PHFB	0	0	0	0	0	0	0	0	0	0	0	0	0	0	0	0	0	0	0	0	0
16-Feb	SWFB	0	0	0	0	0	0	0	0	0	0	0	0	0	0	0	0	0	0	0	0	0
16-Feb	PH1	0	0	0	0	0	0	0	0	0	0	0	0	0	0	0	0	0	0	0	0	0
16-Feb	PH2	0	0	0	0	0	0	0	0	0	0	0	0	0	0	0	0	0	0	0	0	0
16-Feb	PH3	0	0	0	0	0	0	0	0	0	0	0	0	0	0	0	0	0	0	0	0	0
16-Feb	SW1	0	0	0	0	0	0	0	0	0	0	0	0	0	0	0	0	0	0	0	0	0
16-Feb	SW2	0	0	0	0	0	0	0	0	0	0	0	0	0	0	0	0	0	0	0	0	0
16-Feb	SW3	0	0	0	0	0	0	47	0	0	0	0	0	0	0	0	0	0	0	0	0	47
Avg/Survey		0	0	0	0	0	0	24	0	0	0	0	0	0	0	0	0	0	0	0	0	47
17-Feb	PHFB	0	0	0	0	0	0	5	0	0	0	0	0	0	0	0	0	0	0	0	0	5
17-Feb	SWFB	0	0	0	0	0	0	2	0	0	0	0	0	0	0	0	0	0	0	0	0	2
17-Feb	PH1	0	0	0	0	0	0	0	0	0	0	0	0	0	0	0	0	0	0	0	0	0
17-Feb	PH2	0	0	0	0	0	0	0	0	0	0	0	0	0	0	0	0	0	0	0	0	0
17-Feb	PH3	0	0	0	0	0	0	0	0	0	0	0	0	0	0	0	0	0	0	0	0	0
17-Feb	SW1	0	0	1	0	0	0	1	0	0	0	0	0	0	0	0	0	0	0	0	0	2
17-Feb	SW2	0	0	0	0	0	0	16	0	0	0	0	0	0	0	0	0	0	0	0	0	16
17-Feb	SW3	0	0	0	0	0	0	0	0	0	0	0	0	0	0	0	0	0	0	0	0	0
Avg/Survey		0	1	0	0	0	0	12	0	0	0	0	0	0	0	0	0	0	0	0	0	25



John Day Dam  
Avian Zones



## John Day Weekly Averages

	Temp:	Secchi:	Fallbacks
Sun	40	6.0	
Mon	41	6.0	
Tue	41	6.0	
Wed	41	6.0	
Thur	41	5.5	
Fri	41	4.5	
Sat	41	4.5	
<b>AVG:</b>	<b>41</b>	<b>AVG:</b> <span style="border: 1px solid black; text-align: center;">5.5</span>	<b>AVG</b> <span style="border: 1px solid black; text-align: center;"> </span>
			<b>MAX</b> <span style="border: 1px solid black; text-align: center;">0</span>
			<b>MIN</b> <span style="border: 1px solid black; text-align: center;">0</span>

	NE1	NE2	S.Ent	SE1	N.Ent	JBS Diff	Bay19
Sun	oos	oos	oos	oos	1.5	oos	oos
Sun							
Mon	oos	oos	oos	oos	1.4	oos	oos
Mon							
Tues	oos	oos	oos	oos	1.7	oos	oos
Tues							
Wed	oos	oos	oos	oos	1.3	oos	oos
Wed							
Thur	oos	oos	oos	oos	1.4	oos	oos
Thur							
Fri	oos	oos	oos	oos	1.5	oos	oos
Fri							
Sat	oos	oos	oos	oos	1.5	oos	oos
Sat							
<b>AVG:</b>	<b>#DIV/0!</b>	<b>#DIV/0!</b>	<b>#DIV/0!</b>	<b>#DIV/0!</b>	<b>1.5</b>	<b>#DIV/0!</b>	<b>#DIV/0!</b>