


FISHWAY STATUS REPORT

Date: 1/30/2016
Inspection Period: 1/24/2016 thru 1/30/2016



**US Army Corps
of Engineers**
Portland District

JOHN DAY DAM

JD/WC Project-Fisheries
P.O. Box 823
Rufus, Oregon 97050
Phone: 541-506-7860

One inspection per day during the winter maintenance season, 1 December - 28 February.
Frequent monitoring of the PLC displays in SMF Fisheries Office as necessary.

John Day Dam	Inspections	Criteria	Total Number of Inspections: 6	Temperature: 40 F
	Out of Criteria	Limit		Secchi: 6.0 Ft.
NORTH FISHWAY			In service; 5 AWS pumps available while # 4 will be re-installed soon.	
Exit differential	0	≤ 0.5'		
Exit Control weirs	0	High setting	High setting is normal for JDN	
Count station differential	0	≤ 0.3'		
Weir crest depth (DS gauge)	0	1.0' ± 0.1'		
Entrance differential	0	1.0' - 2.0'	AVG 1.5	
SOUTH FISHWAY			OOS for winter maintenance since 1/7/16. ETR is late February 2016.	
Exit differential	0	≤ 0.5'		
Exit Control weirs	0	Mid setting	Mid setting is normal for JDS	
Count station differential	0	≤ 0.3'		
Weir crest depth (US gauge)	0	1.0' ± 0.1'		
South entrance differential	0	1.0' - 2.0'	AVG #DIV/0!	
Entrance weir SE1	0	depth (≥ 8')	AVG #DIV/0!	
Collection channel velocity	0	1.5 - 4 fps	AVG 2.87	
N. Entrance PH(Bay 19)differential	0	1.0' - 2.0'	AVG #DIV/0!	
Entrance weir NE1	0	depth (≥ 8')	AVG #DIV/0!	
Entrance weir NE2	0	depth (≥ 8')	AVG #DIV/0!	
JUVENILE PASSAGE			JBS successfully dewatered on 1/20/16. ETR is mid March 2016.	
Forebay/bypass conduit differential	0	4.0' - 5.0'	AVG 4.4	
Submersible traveling screens	0	visual inspect	All STSs removed by 12/30/15; their annual / winter maintenance is underway	
Turbine trashrack drawdown	0	<1.5', wkly	MU trashracks' raking as necessary per the differentials	
Vert barrier screen drawdown	0	<1.5', wkly		
Spill volume	0	N/A	2016 Spill season starting on 4/10/16.	
Spill pattern	0	per FPP		
Turbine Unit Priority	0	per FPP		
Turbine 1% Efficiency	0	per FPP		

SMOLT MONITORING FACILITY

Operation:

SMF will be OOS/ undergoing maintenance until mid March'15. JBS continues in service in its pre-SMF configuration (bypass at Crest Gate.)

Maintenance:

SMF winterized by JD Fisheries on 11/15. Only annual PMs will be performed this coming winter as all SMF hardware appears to be in good working order. The elevated chute's expansion joints appear to be in good condition, but need the surface epoxy coating.

SMF SCADA (control system's) annual maintenance by JD Electrical underway. There is a current UFR of \$ 150 K, for the SCADA update's P&S.

Research:

None

Fallbacks: **AVG:** **MAX:** 0 **MIN:** 0

OTHER JOHN DAY ISSUES:

Birds :

see the Avian Numbers tab. We report all species and locations, but in reality only gulls in the tailrace BRZ are relevant at JD.

12 Navlock and Spillway lines are missing out of 125 grid's total; JD attempting to contract their reinstallation before May 2016; need \$...

Lines 25 and 26 have been reinstalled by a contractor by 11/21; the remaining lines had been retensioned under the same contract.

Operations:

JBS Collection Channel and its original bypass channel were dewatered on 1/20/16. There were no fish requiring salvage encountered in the either location :)

JD North fishway returned to service and it has been meeting all FPP criteria since 1/5/16.

JD South Fishway OOS since 1/7/16 . ETR is late February 2016.

MU Gatewell Drawdowns: Complete for 2015 passage season.

Maintenance:

JD JBS orifice gates/ tainter gate's annual maintenance underway.

JD North Fishway AWS - pump # 4 will be reinstalled soon by a contractor.

JD South Adult Fishway's annual maintenance is underway.

Calibration: All gauges/ sensors are within the criteria of 0.3' .

Research:

2015 Adult Fish Counting by Normandeau Associates was completed on 10/31. The counting will commence again on 1 April 2016.

Proposal by PSMFC to install Adult PIT antennas at both JD Fishways is at the design/PDT level.

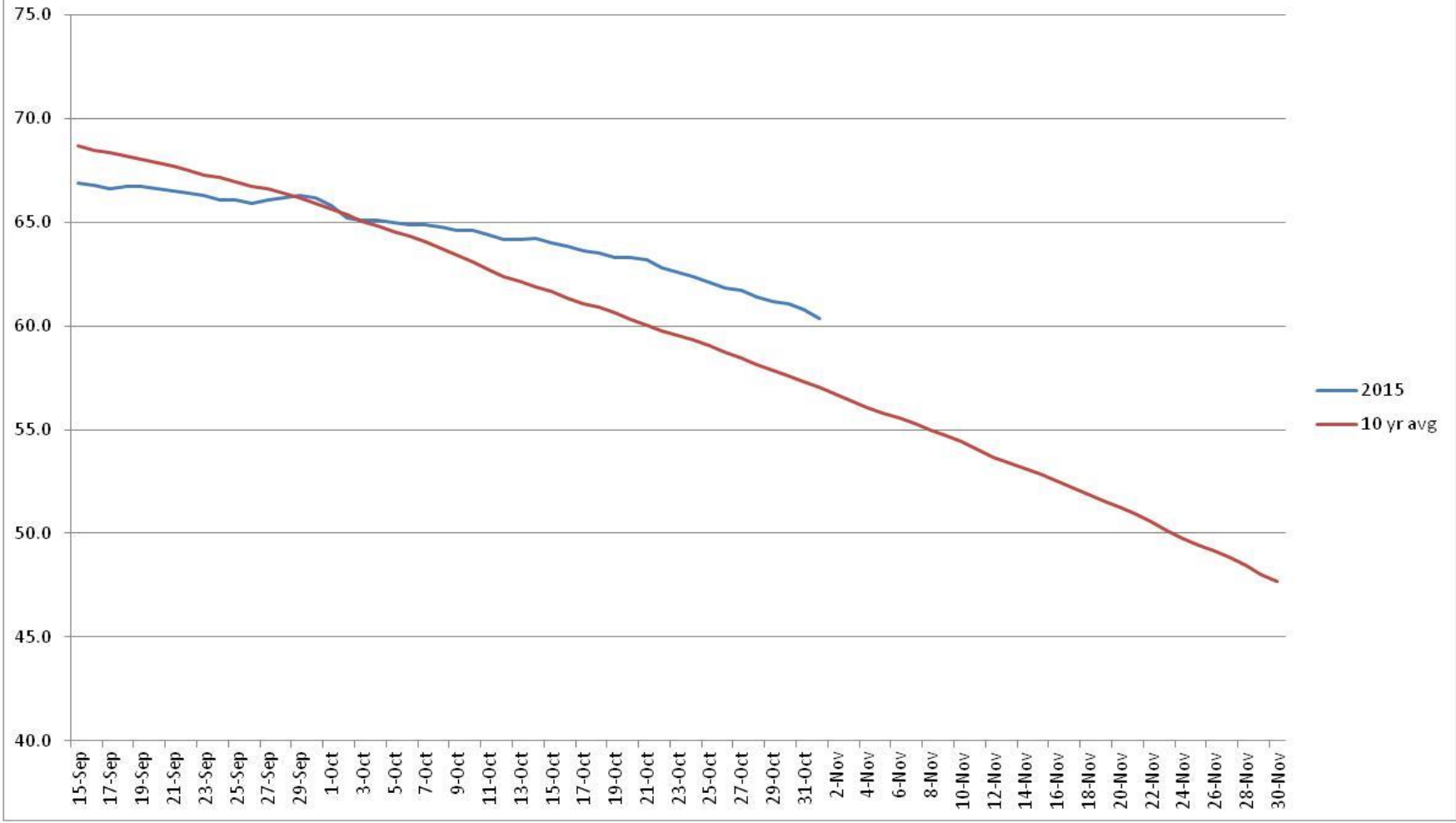
Kevin Moynahan
OPM John Day/Willow Creek Project

E-Signed by MOYNAHAN,KEVIN,PATRICK,1393959157
VERIFY authenticity with ApproveIt
MOYNAHAN,KEVIN,PATRICK,1393959157

ate:

January 24, 2016

John Day TW Temperature



JDA Collection Channel Velocity

Date 24-Dec-15

By: MDL

Bay(s)	Time	Sec.	Velocity (f/s)
0-2	1:29	89	2.02
2 - 4	2:31	151	2.90
4 - 6	3:35	215	2.81
6 - 8	4:37	277	2.90
8 - 10	5:45	345	2.65
10 - 12	6:48	408	2.86
12 - 14	7:52	472	2.81
14 - 16	8:56	536	2.81
16 - 18	9:40	580	4.09
			2.87

JDA Bird Counts: 1/24/16 to 1/30/16

F(1): Forage AM survey F(2): Forage PM Survey NF(1): Non-Forage AM Survey NF(2): Non-Forage PM Survey

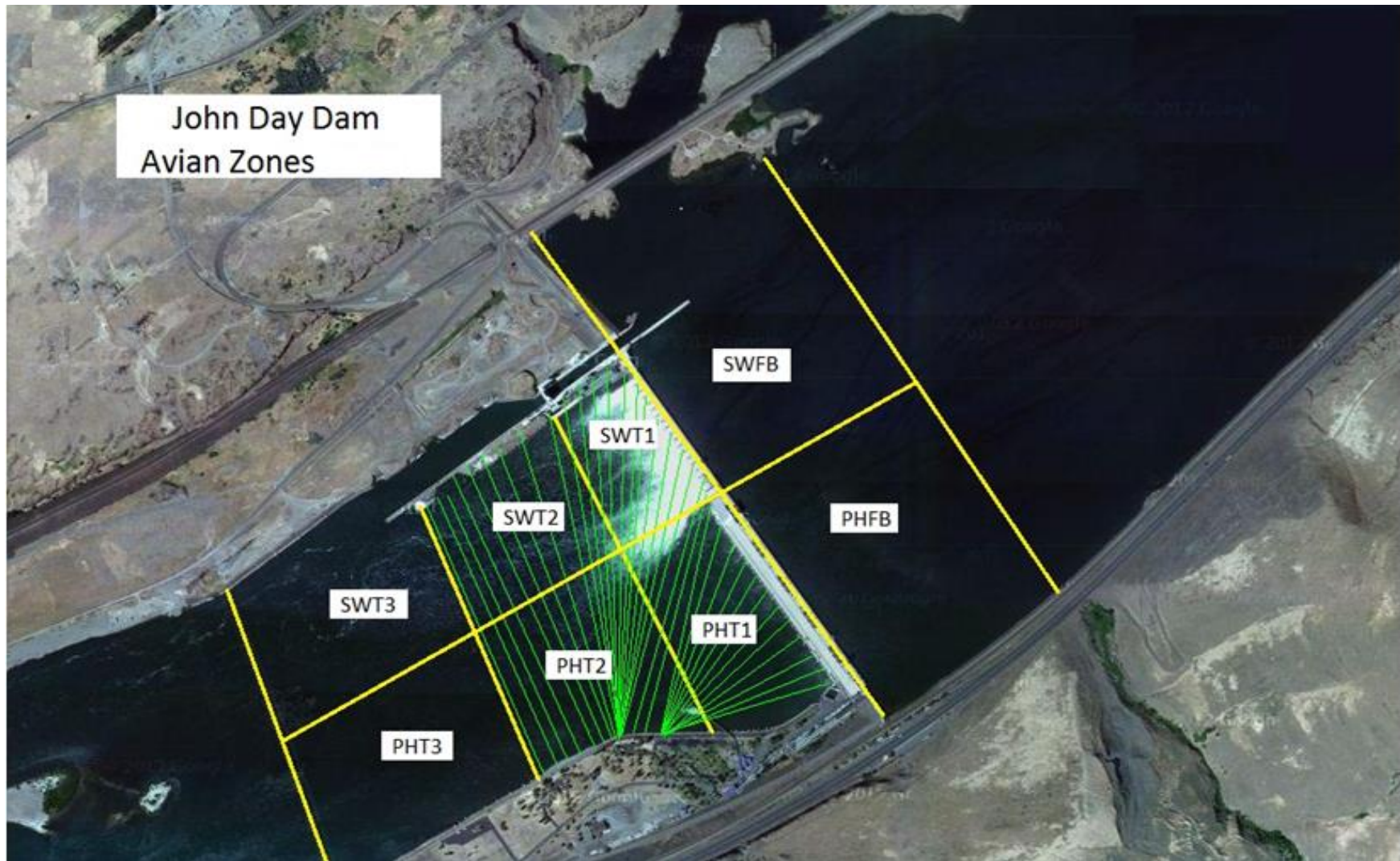
Date	Zone	Gulls				Cormorant				Caspian tern				White Pelican				Grebe				Total
		F(1)	F(2)	NF(1)	NF(2)	F(1)	F(2)	NF(1)	NF(2)	F(1)	F(2)	NF(1)	NF(2)	F(1)	F(2)	NF(1)	NF(2)	F(1)	F(2)	NF(1)	NF(2)	
24-Jan	PHFB	0	0	22	0	0	0	0	0	0	0	0	0	0	0	0	0	0	0	0	0	22
24-Jan	SWFB	0	0	0	0	0	0	0	0	0	0	0	0	0	0	0	0	0	0	0	0	0
24-Jan	PH1	0	0	6	0	5	0	0	0	0	0	0	0	0	0	0	0	0	0	0	0	11
24-Jan	PH2	0	0	0	0	0	0	0	0	0	0	0	0	0	0	0	0	0	0	0	0	0
24-Jan	PH3	0	0	0	0	0	0	0	0	0	0	0	0	0	0	0	0	0	0	0	0	0
24-Jan	SW1	0	0	0	0	8	0	0	0	0	0	0	0	0	0	0	0	0	0	0	0	8
24-Jan	SW2	0	0	0	0	0	0	0	0	0	0	0	0	0	0	0	0	0	0	0	0	0
24-Jan	SW3	0	0	0	0	0	0	14	0	0	0	0	0	0	0	0	0	0	0	0	0	14
Avg/Survey		0		14		7		7		0		0		0		0		0		0		55
25-Jan	PHFB	0	0	11	0	0	0	9	0	0	0	0	0	0	0	0	0	0	0	0	0	20
25-Jan	SWFB	0	0	0	0	0	0	0	0	0	0	0	0	0	0	0	0	0	0	0	0	0
25-Jan	PH1	8	0	8	0	3	0	0	0	0	0	0	0	0	0	0	0	0	0	0	0	19
25-Jan	PH2	0	0	0	0	0	0	0	0	0	0	0	0	0	0	0	0	0	0	0	0	0
25-Jan	PH3	0	0	0	0	0	0	0	0	0	0	0	0	0	0	0	0	0	0	0	0	0
25-Jan	SW1	0	0	0	0	0	0	0	0	0	0	0	0	0	0	0	0	0	0	0	0	0
25-Jan	SW2	0	0	0	0	0	0	0	0	0	0	0	0	0	0	0	0	0	0	0	0	0
25-Jan	SW3	0	0	0	0	0	0	21	0	0	0	0	0	0	0	0	0	0	0	0	0	21
Avg/Survey		4		10		2		15		0		0		0		0		0		0		60
26-Jan	PHFB	0	0	5	0	0	0	18	0	0	0	0	0	0	0	0	0	0	0	0	0	23
26-Jan	SWFB	0	0	0	0	0	0	0	0	0	0	0	0	0	0	0	0	0	0	0	0	0
26-Jan	PH1	3	0	4	0	3	0	0	0	0	0	0	0	0	0	0	0	0	0	0	0	10
26-Jan	PH2	0	0	0	0	0	0	0	0	0	0	0	0	0	0	0	0	0	0	0	0	0
26-Jan	PH3	0	0	0	0	0	0	0	0	0	0	0	0	0	0	0	0	0	0	0	0	0
26-Jan	SW1	0	0	0	0	0	0	0	0	0	0	0	0	0	0	0	0	0	0	0	0	0
26-Jan	SW2	0	0	0	0	0	0	0	0	0	0	0	0	0	0	0	0	0	0	0	0	0
26-Jan	SW3	0	0	0	0	0	0	31	0	0	0	0	0	0	0	0	0	0	0	0	0	31
Avg/Survey		2		5		2		25		0		0		0		0		0		0		64
27-Jan	PHFB	0	0	2	0	0	0	0	0	0	0	0	0	0	0	0	0	0	0	0	0	2
27-Jan	SWFB	0	0	0	0	0	0	0	0	0	0	0	0	0	0	0	0	0	0	0	0	0
27-Jan	PH1	3	0	0	0	4	0	0	0	0	0	0	0	0	0	0	0	0	0	0	0	7
27-Jan	PH2	5	0	0	0	0	0	0	0	0	0	0	0	0	0	0	0	0	0	0	0	5
27-Jan	PH3	0	0	0	0	0	0	0	0	0	0	0	0	0	0	0	0	0	0	0	0	0
27-Jan	SW1	0	0	0	0	0	0	0	0	0	0	0	0	0	0	0	0	0	0	0	0	0
27-Jan	SW2	0	0	0	0	0	0	42	0	0	0	0	0	0	0	0	0	0	0	0	0	42
27-Jan	SW3	0	0	0	0	0	0	0	0	0	0	0	0	0	0	0	0	0	0	0	0	0
Avg/Survey		4		1		2		21		0		0		0		0		0		0		56

JDA Bird Counts: 1/24/16 to 1/30/16

F(1): Forage AM survey F(2): Forage PM Survey NF(1): Non-Forage AM Survey NF(2): Non-Forage PM Survey

Date	Zone	Gulls				Cormorant				Caspian tern				White Pelican				Grebe				Total
		F(1)	F(2)	NF(1)	NF(2)	F(1)	F(2)	NF(1)	NF(2)	F(1)	F(2)	NF(1)	NF(2)	F(1)	F(2)	NF(1)	NF(2)	F(1)	F(2)	NF(1)	NF(2)	
28-Jan	PHFB	0	0	0	0	0	0	13	0	0	0	0	0	0	0	0	0	0	0	0	0	13
28-Jan	SWFB	0	0	0	0	0	0	0	0	0	0	0	0	0	0	0	0	0	0	0	0	0
28-Jan	PH1	0	0	0	0	0	0	3	0	0	0	0	0	0	0	0	0	0	0	0	0	3
28-Jan	PH2	2	0	0	0	0	0	0	0	0	0	0	0	0	0	0	0	0	0	0	0	2
28-Jan	PH3	0	0	0	0	0	0	0	0	0	0	0	0	0	0	0	0	0	0	0	0	0
28-Jan	SW1	0	0	0	0	0	0	0	0	0	0	0	0	0	0	0	0	0	0	0	0	0
28-Jan	SW2	0	0	0	0	0	0	44	0	0	0	0	0	0	0	0	0	0	0	0	0	44
28-Jan	SW3	0	0	0	0	0	0	0	0	0	0	0	0	0	0	0	0	0	0	0	0	0
Avg/Survey		1		0		0		30		0		0		0		0		0		0		62
29-Jan	PHFB	0	0	0	0	0	0	0	0	0	0	0	0	0	0	0	0	0	0	0	0	0
29-Jan	SWFB	0	0	1	0	0	0	0	0	0	0	0	0	0	0	0	0	0	0	0	0	1
29-Jan	PH1	3	0	0	0	3	0	0	0	0	0	0	0	0	0	0	0	0	0	0	0	6
29-Jan	PH2	0	0	0	0	0	0	0	0	0	0	0	0	0	0	0	0	0	0	0	0	0
29-Jan	PH3	0	0	0	0	0	0	0	0	0	0	0	0	0	0	0	0	0	0	0	0	0
29-Jan	SW1	0	0	0	0	0	0	0	0	0	0	0	0	0	0	0	0	0	0	0	0	0
29-Jan	SW2	0	0	0	0	0	0	58	0	0	0	0	0	0	0	0	0	0	0	0	0	58
29-Jan	SW3	0	0	0	0	0	0	0	0	0	0	0	0	0	0	0	0	0	0	0	0	0
Avg/Survey		2		1		2		29		0		0		0		0		0		0		65
30-Jan	PHFB	0	0	0	0	0	0	0	0	0	0	0	0	0	0	0	0	0	0	0	0	0
30-Jan	SWFB	0	0	0	0	0	0	0	0	0	0	0	0	0	0	0	0	0	0	0	0	0
30-Jan	PH1	0	0	1	0	0	0	0	0	0	0	0	0	0	0	0	0	0	0	0	0	1
30-Jan	PH2	0	0	0	0	0	0	0	0	0	0	0	0	0	0	0	0	0	0	0	0	0
30-Jan	PH3	0	0	0	0	0	0	17	0	0	0	0	0	0	0	0	0	0	0	0	0	17
30-Jan	SW1	0	0	0	0	0	0	0	0	0	0	0	0	0	0	0	0	0	0	0	0	0
30-Jan	SW2	0	0	0	0	0	0	28	0	0	0	0	0	0	0	0	0	0	0	0	0	28
30-Jan	SW3	0	0	0	0	0	0	0	0	0	0	0	0	0	0	0	0	0	0	0	0	0
Avg/Survey		0		1		0		23		0		0		0		0		0		0		46
Totals		Gulls				Cormorant				Caspian tern				White Pelican				Grebe				Total
		F		NF		F		NF		F		NF		F		NF		F		NF		
Weekly Total		24		60		26		298		0		0		0		0		0		0		408
Avg/Survey		2		4		2		21		0		0		0		0		0		0		29

John Day Dam
Avian Zones



John Day Weekly Averages

	Temp:	Secchi:	Fallbacks
Sun	40	6.0	
Mon	40	6.0	
Tue	40	6.0	
Wed	40	6.0	
Thur	41	6.0	
Fri	41	6.0	
Sat	41	6.0	
AVG:	40	6.0	AVG
			MAX 0
			MIN 0

	NE1	NE2	S.Ent	SE1	N.Ent	JBS Diff	Bay19
Sun	oos	oos	oos	oos	1.6	oos	oos
Sun							
Mon	oos	oos	oos	oos	1.5	oos	oos
Mon							
Tues	oos	oos	oos	oos	1.5	oos	oos
Tues							
Wed	oos	oos	oos	oos	1.7	oos	oos
Wed							
Thur	oos	oos	oos	oos	1.5	oos	oos
Thur							
Fri	oos	oos	oos	oos	1.5	oos	oos
Fri							
Sat	oos	oos	oos	oos	1.4	oos	oos
Sat							
AVG:	#DIV/0!	#DIV/0!	#DIV/0!	#DIV/0!	1.5	#DIV/0!	#DIV/0!